

The University
of Manchester

MANCHESTER
1824



postgraduate prospectus

2011 entry



welcome

We have teaching and research in more subjects than any other UK university - so this prospectus can only offer you a brief introduction to our exciting opportunities for postgraduates.

Find more detailed and up-to-date information about courses and the University on our website, or via the contact details provided in each section of this prospectus.

come and meet us

For information about open days, visiting the University and our virtual open day, see:
www.manchester.ac.uk/postgraduate

If you require a copy of this prospectus, or certain sections of it, in an alternative format, please contact Student Marketing and Admissions:

tel +44 (0)161 275 4740



contents

life

the university	2
international research excellence	4
enhancing your employability	8
your study options	12
support	16
international postgraduate support	18
finance	20
applying	22
english language requirements and support	24
accommodation	26
campus	28
city	36

study

faculty of engineering and physical sciences	42
engineering and physical sciences courses	46
faculty of humanities	56
humanities courses	60
faculty of life sciences	82
life sciences courses	86
faculty of medical and human sciences	88
medical and human sciences courses	92
manchester doctoral college	96
mdc courses	97

index

100

the university

With a distinguished history of academic achievement and an ambitious agenda for the future, The University of Manchester offers you a learning experience rooted in a rich educational heritage and boosted by cutting-edge research and innovation – all at the heart of one of the world's most vibrant cities.





Our tradition of success stretches back over 180 years. The birth of the modern computer, the splitting of the atom, the founding principles of modern economics – these and many more world-changing innovations have their roots at our University.

Today, our research is internationally renowned across diverse disciplines and we actively assist our staff and students in turning many research and entrepreneurial ideas into commercial business ventures.

Our mission – backed by an ongoing £650 million investment in facilities, staff and buildings – is to become one of the world's top 25 universities and the preferred destination for the best tutors, researchers and students.

Choose The University of Manchester and you will join one of Britain's most forward-thinking universities, which builds on its success year on year – and invites you to do the same.

international research excellence

Our global reputation for pioneering research and proactive relationships with industry and public services make us a centre for academic excellence and a dynamic force for positive change – achievements that you can both benefit from and contribute towards as a postgraduate student.

Manchester offers you...

- Official ranking of third in the UK, after Oxford and Cambridge, in terms of “research power”
- Close industrial partnerships that inform our research and your courses, and boost your career prospects
- Multidisciplinary research environments
- Cutting-edge facilities boosted by ongoing multimillion-pound investment

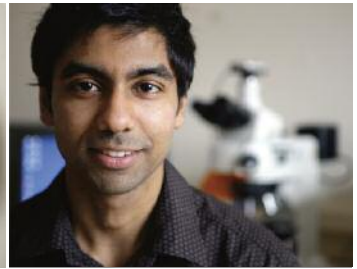
A research-intensive university

Many major 20th century advances began in our laboratories, such as the work by Rutherford leading to the splitting of the atom and the development of the world's first programmable computer in 1948.

Today, research remains at the heart of The University of Manchester. We research in a wider range of academic areas than any other British university and we are officially rated third in the UK in terms of “research power”, close on the heels of Oxford and Cambridge.

We have also risen in the prestigious Shanghai Jiao Tong Ranking of the World's Top Universities, from 53rd in 2005 to 41st in 2009 in the world and seventh in Europe.

In 2008/09, the University attracted more than £270m of research-related income from external sources. We are one of the top three universities for grant funding from the main UK bioscience and science and engineering research councils.



Supporting business innovation

Manchester also has an impressive track record when it comes to turning ideas into commercial reality. Our technology transfer company, University of Manchester Intellectual Property Ltd (UMIP), works with researchers, entrepreneurs, business people, professional advisers and investors to handle hundreds of invention disclosures submitted by our academics and to help create spin-out companies based on our current research.

UMIP also helps to attract world-class academics to the University by providing a dynamic, top-class support system in which they can participate and succeed in commercialisation projects.

Investment in your/our future

Committed to providing first-class facilities for our students and researchers, we are currently investing more than £650 million in the largest and most ambitious capital building programme in British higher education. Projects recently opened include: our flagship building, University Place; Alan Turing Building, for Mathematics, Physics and Photon Sciences; Arthur Lewis Building, for Environment and Development, and Social Sciences; AV Hill Building, home to Life Sciences; and the dynamic Manchester Interdisciplinary Biocentre.

This unrivalled programme of investment in talent and facilities is driven by 'Towards Manchester 2015', our ambitious agenda for the future, which aims to drive Manchester further at the forefront of global higher education.

Recent research developments

The University is committed to breaking down limitations and introducing fresh, interdisciplinary ways of working, which are opening up exciting new areas of study and discovery in our 22 academic Schools and our University Research Institutes.

In the past few years, we have launched new interdisciplinary Research Institutes in: aerospace; bioscience and biomedicine; health sciences; global

poverty; neuroscience; cancer research; photon science; social change; environmental sustainability; science, ethics and innovation; nuclear science; cosmopolitan cultures; and molecular imaging.

In addition to these Institutes, there are more than 50 specialist research centres at the University, each undertaking pioneering research into areas ranging from genetic disorders to artificial intelligence.

Partnership with other universities has led to initiatives such as the Northern Aerospace Technology Exploitation Centre (NATEC), which aims to help to maintain and enhance the competitiveness of the UK aerospace industry.

What our research credentials mean for you

High-quality facilities and teaching combined with our interdisciplinary approach to research enable you to benefit from world-class research and learning opportunities throughout your time at The University of Manchester.

As a postgraduate student here, you will make a major contribution to our research excellence. You'll add to the dynamic research culture flourishing throughout our Schools and benefit from international research leadership under distinguished scholars.

Whether studying for a taught postgraduate award or a research degree, you will be directly involved with cutting-edge research and pushing the barriers to creativity.

Decades of excellent working relationships with organisations from a diverse range of industry areas also provide exceptional opportunities for research with commercial applications, as well as the chance to develop business and entrepreneurial skills and experience relevant to your future career choices.

If your ambition matches ours and you are looking for an unparalleled commitment to excellence, we warmly invite you to join us at Manchester.



The Research Assessment Exercise 2008

The Research Assessment Exercise (RAE) measures the quality of research conducted in universities and other higher education institutions in the UK against international standards of excellence, and enables the higher education funding bodies to distribute public funds on the basis of quality. These funds allow us to continue to recruit the best research staff and students, continue building strong links with industrial and research partners, and sustain investment in our facilities.

The University put forward research staff from each subject area for the most recent RAE in 2008, whose research activity was assessed and judged to fit within the following categories of quality:

4* World-leading in terms of originality, significance and rigour.

3* Internationally excellent in terms of originality, significance and rigour, but falls short of the highest standards of excellence.

2* Recognised internationally in terms of originality, significance and rigour.

1* Recognised nationally in terms of originality, significance and rigour.

Unclassified Falls below the standard of nationally recognised work.

Throughout the 'study' pages in this prospectus, you will find an 'RAE key', which reveals what percentage of research activity carried out within each subject area fits within the above starred categories.

The table here reveals the number of full-time equivalent (FTE) research staff from each subject area who were submitted for assessment to the 2008 RAE – and the percentage of research activity by these staff members that was judged to be either world-leading (4*) or internationally excellent (3*).

Find out more: www.manchester.ac.uk/research

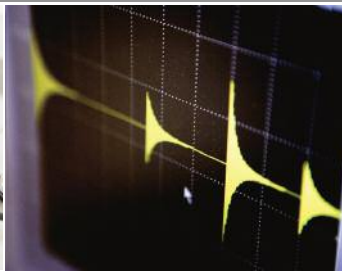
We are delighted with our impressive ratings in the RAE 2008, which has placed us third in the UK in terms of "research power" as we continue to increase the number of first-rate professorships, build on our strong links to industry, and invest in world-class facilities for our staff and students.

Ranking	University	FTE research activity judged to be 4* and 3*
1	University of Oxford	1,580
2	University of Cambridge	1,452
3	The University of Manchester	1,194

Source: HEFCE RAE 2008

the rae results

Unit of assessment	FTE staff submitted for assessment	% of research activity judged to be 4* and 3*
Allied Health Professions and Studies	24	50%
Anthropology	24	50%
Applied Mathematics	29	60%
Archaeology	13	60%
Asian Studies	7	35%
Biological Sciences	107	65%
Business and Management Studies	182	65%
Cancer Studies	39	90%
Cardiovascular Medicine	24	75%
Chemical Engineering	33	75%
Chemistry	58	65%
Classics, Ancient History, Byzantine and Modern Greek Studies	17	55%



Unit of assessment	FTE staff submitted for assessment	% of research activity judged to be 4* and 3*
Computer Science and Informatics	72	85%
Dentistry	20	75%
Development Studies	37	65%
Drama, Dance and Performing Arts	10	85%
Earth Systems and Environmental Sciences	37	70%
Economics and Econometrics	35	80%
Education	41	55%
Electrical and Electronic Engineering	46	70%
English Language and Literature	33	75%
Epidemiology and Public Health	21	60%
French	15	50%
General Engineering and Mineral and Mining Engineering	52	70%
Geography and Environmental Studies	22	65%
German, Dutch and Scandinavian Studies	11	55%
History	34	60%
History of Art, Architecture and Design	17	80%
Iberian and Latin American Languages	14	75%
Italian	7	55%
Law	62	50%
Linguistics	15	55%
Metallurgy and Materials	49	80%

Unit of assessment	FTE staff submitted for assessment	% of research activity judged to be 4* and 3*
Middle Eastern and African Studies	12	60%
Music	14	85%
Nursing and Midwifery	58	85%
Other Hospital-Based Clinical Subjects	39	70%
Other Laboratory-Based Clinical Subjects	15	50%
Pharmacy	32	70%
Philosophy	14	45%
Physics	83	55%
Politics and International Studies	46	50%
Pre-Clinical and Human Biological Studies	73	65%
Primary Care and Other Community-Based Clinical Subjects	13	80%
Psychiatry, Neuroscience and Clinical Psychology	40	50%
Psychology	31	45%
Pure Mathematics	27	60%
Russian, Slavonic and East European Languages	6	70%
Social Work and Social Policy and Administration	13	45%
Sociology	49	60%
Statistics and Operational Research	11	55%
Theology, Divinity and Religious Studies	24	65%
Town and Country Planning	18	60%

enhancing your employability

Whether you want to work in business, academia, industry, public services, or not-for-profits, or you simply want to keep your options open, postgraduate study at Manchester can help you to realise your ambitions.

Manchester offers you...

- A globally recognised postgraduate qualification from a university with an outstanding reputation
- One of the most targeted UK universities by thousands of graduate recruiters
- The UK's "best" Careers Service, consistently topping polls for employer and student satisfaction
- Advice from trained careers consultants who specialise in working with postgraduates
- Practical skills-development courses and workshops to help you stand out from the postgraduate crowd

More than a degree...

While postgraduate study in itself will further your knowledge and prospects, in today's competitive graduate jobs market you need more than academic success. You need to build your skillset and demonstrate your employment potential – and at Manchester we offer you many exciting opportunities to enhance your postgraduate CV.

Why Manchester?

You will join a distinguished community of world-class academics at the cutting edge of research, with diverse opportunities to develop skills, learn from academic and industry professionals and demonstrate your potential to employers.

Innovative Faculty skills-training programmes for research students help to improve your research skills and increase your employability, with opportunities to learn from employers and alumni.



Manchester graduates are greatly in demand by major employers and our alumni have an impressive track record of becoming leaders in their fields, such as philosopher Wittgenstein, novelist Anthony Burgess, flight pioneer Arthur Whitten-Brown and women's rights campaigner Christabel Pankhurst; or, more recently, Tesco's Chief Executive, Sir Terry Leahy, and the President of Trinidad and Tobago, George Maxwell Richards.

The Careers Service

Our Careers Service runs popular careers fairs covering finance, business, science, engineering, technology, law, non-profit and creative sectors, and advertises vacancies with more than 4,000 recruiters each year through an online service exclusively available to our students and graduates.

Other services include: an information-packed careers website; a well-equipped Careers Resource Centre; diverse career events; and one-to-one guidance sessions by postgraduate consultants, who can help you to explore your options and work to achieve your career goals.

Pioneering services for international recruitment include live global webcasts with overseas employers, Manchester networking events and work experience opportunities exclusively for international students. We also run popular and informative careers blogs, including two dedicated respectively to postgraduate and international students.

Our Manchester Gold careers mentoring scheme offers you focused support in your chosen career from an expert in your field. An active Students' Union supports a wide range of societies and campaigns that you can join to boost your CV. Finally, our Careers Service advertises volunteering opportunities, enabling you to contribute to your local community, demonstrate real achievements to employers and feel part of our vibrant city during your postgraduate studies.

Act quickly and investigate opportunities at our Careers Service as soon as you start your course, in order to get the best chance for a successful, fulfilling future.

www.manchester.ac.uk/careers

<http://manchestergpcareers.wordpress.com>

graduate profile

Name Dr Manikandan
Kadirvel,
graduate (2009)
Age 32
From Pondicherry, India
Course PhD in Medicinal
Chemistry
Job title Research Associate in
Radiosynthetic
Chemistry



What did you gain from your degree?

"The outcome of my research was excellent, with five journal articles published; I attended international and national conferences, symposiums and workshops. I was encouraged to learn new techniques and was trained to write, publish and report scientific progress via journals, conferences, symposiums and workshops.

"Importantly, I learned a flexible approach towards working in a multidisciplinary environment, and an ability to work under pressure, with excellent organisational skills. I was also trained to work independently as part of a team led by Dr Sally Freeman, an award-winning reader and my supervisor.

How did the Careers Service help you?

"I wished to work part-time while studying and approached the Careers Service for a quick query session. They gave me valuable information on writing CVs, covering letters and interview tips. I got a part-time job with the University's Directorate of Estates, and continued to work there for three years.

"I hugely benefited from the Careers Service's Graduate Recruitment Fair and had a chance to meet the top employers across various industries and discover their expectations. At my graduation, I prepared for job interviews by practising psychometric testing and revising my CV. I confidently faced my first interview and got selected for my current position."

What do you do now?

"I am currently working on a radiosynthetic chemistry project in the University's Wolfson Molecular Imaging Centre (WMIC), where teamwork and ideas are very important to develop novel labelling strategies directed towards the synthesis of radio-labelled compounds for oncology and brain disorder research. I really enjoy working at WMIC and find it incredibly interesting and rewarding. I feel that my confidence and personal development will continue to grow, leading to an enjoyable and fulfilling career."

What does it mean to you to be a Manchester graduate?

"I am proud to be a graduate of the one of the world's top ranked universities and one of more than 24,000 University of Manchester alumni worldwide. Over the years, I attracted numerous friendships and contacts. The research staff are generously helpful towards my research and I look forward to their support and guidance in the future as well."



graduate recruiter

Name	Andrew Bargery, graduate recruiter
Works in	Recruitment & Mobility Services
Employer	PricewaterhouseCoopers

"PricewaterhouseCoopers (PwC) support and run a large number of events at The University of Manchester, including postgraduate-focused events such as the PhD Zone and panel Q&A sessions.

"The University has a strong focus on career guidance skills for all students and, as a result, we have an excellent record of recruiting Manchester students from all disciplines onto our graduate and undergraduate programmes."

your study options

Like most potential postgraduate students, you probably have a clear idea of what subject you are interested in pursuing. However, you may be less certain of the way in which you want to study it, and to what level.

Modes of study

The different modes of study available for each qualification are outlined in the course and programme lists in the subject sections of this prospectus.

Most of our students study for a postgraduate qualification on a full-time basis, but many taught courses and research programmes can be studied part-time. International applicants from non-EU countries should note that the terms of entry into the UK normally prevent you from registering for a programme on a part-time basis.

Several Schools offer postgraduate qualifications – mainly taught masters – via distance learning (also known as distributed learning, or e-learning). Distance learning allows you to learn through self-study, using printed materials and web-based resources.

Here follows a brief guide to the different types of qualification we offer and the different ways in which you can study them.

Levels of study

Taught courses

Postgraduate diplomas and certificates: Diplomas usually last nine months and certificates usually last six months. They include specialised courses, such as the Postgraduate Certificate in Education (PGCE) and the Diploma in Social Work (DipSW), as well as general courses. They are structured either in a similar way to masters courses (but without the need for a dissertation), or – as in the case with the PGCE and DipSW – they are specifically vocational.

Masters degrees: These are intensive taught courses with a dissertation or project, which usually last for 12 months full-time, or 24 months part-time (compared to two years full-time in most other countries). The MBA course lasts 18 months full-time and up to five years part-time. Masters degrees include the Master of Arts (MA), Master of Business Administration (MBA), Master of Education (MEd), Master of Science (MSc), Master of Law (LLM), Master of Music (MusM) and Master of Research (MRes). Masters degrees usually involve two semesters of classes and assessed work, followed by five or six months' research, culminating in a dissertation. The balance of the taught and research elements and the methods of assessment vary from course to course.



The Master of Research (MRes) is structured slightly differently and provides you with an opportunity for extensive research training and subject-specific advanced learning, with a view to proceeding to doctoral research.

Research programmes

MSc by Research: A 12-month programme including subject-specific taught course units, research skills training and a substantial research project, or series of research projects.

Master of Philosophy (MPhil): Usually lasting 12 months and assessed by the submission and examination of a shorter thesis than that required for a PhD, setting out the results of an original, individual programme of investigational work. You may follow successful completion of the MPhil (including the preparation of a detailed plan for a doctoral research project) by registration for a PhD.

Doctor of Philosophy (PhD): Lasting at least three years and awarded in recognition of the successful completion of a programme of supervised research within the allocated time, the results of which show evidence of originality and independent, critical judgement and constitute an addition to knowledge.

Although instructional courses are included in the training, you spend most time undertaking independent research, with progress closely monitored throughout the period of study. Assessment is based upon an oral examination and examination of your final thesis.

Integrated PhD: Usually lasts four years, combining work towards the award of a full University of Manchester PhD with masters-level taught units and personal development training.

Collaborative PhD: The Collaborative PhD is designed to provide you with the opportunity to undertake a research project with a sponsoring partner from industry or commerce. For further information, contact the School you are interested in.



Split-site PhD: There may be opportunities in some subject areas for you to undertake a PhD on a split-site basis. Please contact the relevant School or Faculty for further information.

Doctor of Engineering (EngD): A four-year programme combining the academic strengths of a conventional PhD with the practical benefits of linking the research to the specific needs of a collaborating company. You also receive training in management theory, leading to the award of a Diploma in Enterprise Management. For further details, contact the EngD Centre: tel +44 (0)161 306 4157 email engd.centre@manchester.ac.uk

Master of Enterprise (MEnt): A 12-month research masters designed to train and support you in developing business ideas, the MEnt comprises two compulsory enterprise units and two optional units from any discipline, as well as a project. The project combines the subject-specific knowledge and enterprise skills required to develop a viable business proposition.

Enterprise Doctorate (EntD): A four-year programme involving discipline-specific research and development, enterprise training and experience in knowledge transfer and business. The core is a project that embraces research work and commercialisation from the concept to the marketplace. For further information on MEnt or EntD, contact the Enterprise Centre: www.manchester.ac.uk/msec

Professional Doctoral: These programmes relate to specific professional areas and incorporate a taught element. They are available in:

- Counselling (DCouns)
- Drama (Doctor of Applied Theatre)
- Educational Psychology (DEdPsy)
- Educational and Child Psychology (DEdChPsy)
- Education (EdD)
- Clinical Psychology (ClinPsyD)
- Business Administration (DBA)
- Practical Theology (DPT)



Skills training

Studying for a postgraduate award at The University of Manchester means more than deepening your knowledge in an academic discipline. We are committed to providing you with the environment and support that allow exceptionally high quality research to flourish.

A key factor is the support we offer our postgraduate research degree students. Each Faculty offers comprehensive skills-training programmes that contribute not only to the quality of our research output, but also to the employability of our research degree students. For more details, please contact the School or Faculty you are interested in.

Our award-winning Careers Service also runs a range of activities dedicated to all postgraduates to help you to enhance your employability while studying.

Start dates

Taught postgraduate courses (with the exception of the MBA) and research masters have one annual intake, starting mid to late September each year.

For research programmes (MPhil and PhD), there are four possible points for enrolment: late September, January, April and July.

support

We are committed to providing all our postgraduate students with the academic, personal and professional support you need to help you complete your studies successfully.

Manchester offers you...

- A wide range of experienced and sympathetic people, support and advice to help you find a solution to any difficulty: financial, academic, personal, or administrative
- Dedicated support for different student groups

Student support

Whatever the issue – financial, academic, personal, or administrative – we have experienced and sympathetic people, support groups and advice services to help you. Find out about counselling, academic advice and various other student support services:

www.studentnet.manchester.ac.uk/crucial-guide

Funding and finance

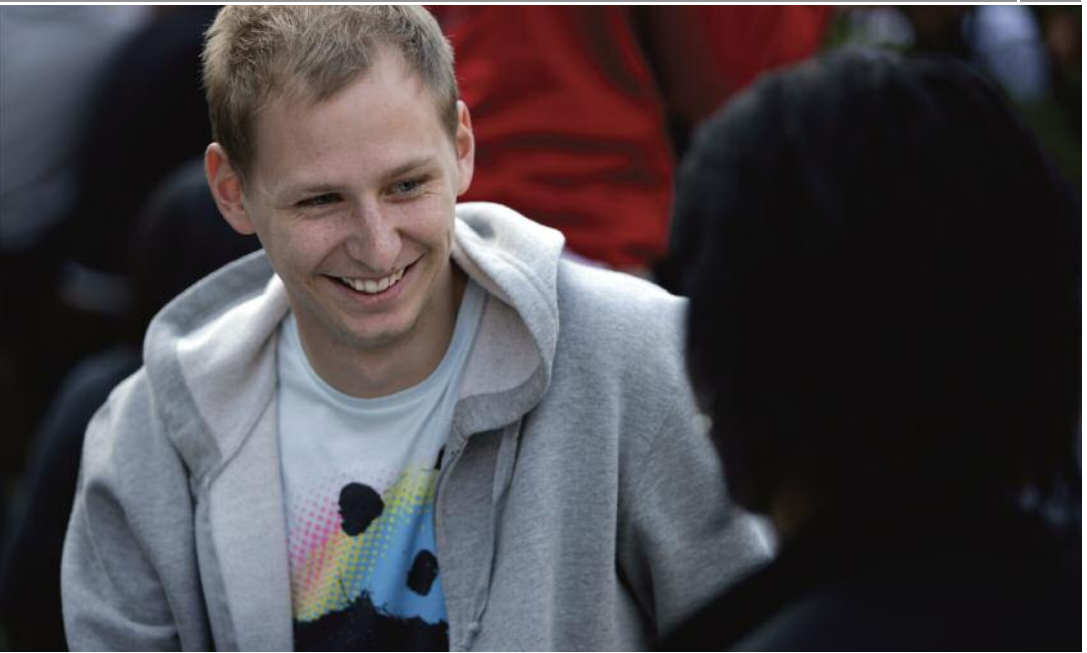
Find out more about tuition fees and student finance, including international fees, payment options, cost of living and managing debt:

www.studentnet.manchester.ac.uk/crucial-guide/financial-life

Childcare

There are two centres associated with the University for children between six months and five years of age: Dryden Street Nursery and Echoes Nursery. Find out more about funding options, private nurseries, playgroups and schools:

www.studentnet.manchester.ac.uk/crucial-guide/university-life/student-parents



Religious support

There are two chaplaincy centres for the major Christian churches. St Peter's House provides chaplains for the Anglican, Baptist, Methodist and United Reformed Churches, while the Roman Catholic Chaplaincy is at Avila House. Hillel House provides facilities for Jewish worship. There are prayer facilities on campus for Muslim students and student societies for many religions.

Disability support

If you have additional needs arising from a medical condition, a physical or sensory disability, or a specific learning difficulty, you are strongly encouraged to contact the University's Disability Support Office to discuss your needs, any arrangements that may be necessary and the extent to which appropriate support is available.

www.manchester.ac.uk/dso

tel +44 (0)161 275 7512
minicom +44 (0)161 275 2794
fax +44 (0)161 275 7018
dso@manchester.ac.uk

Alumni

After your studies, our Alumni Association will keep you connected both to the University and to Manchester alumni worldwide via the interactive alumni web community 'Your Manchester Online' and a programme of events, reunions and networking opportunities. A wide variety of benefits and services for alumni are provided and you will receive the free, annual magazine Your Manchester.

www.manchester.ac.uk/yourmanchester

tel +44 (0)161 306 3066
fax +44 (0)161 306 8066
alumni@manchester.ac.uk

international postgraduate support

As an international student, you can be sure of a warm welcome here at The University of Manchester. This year, 9,500 students from over 150 countries are studying with us.





Specialist services and support for international students

Arriving in a new country is an exciting time, but we know that it can also be a somewhat daunting prospect.

We want you to feel welcome and settle in quickly when you arrive in Manchester. To help you to do this, we offer a number of services to make this process as straightforward as possible. These include:

Arrival guide – Before you arrive in Manchester, we will send you this in-depth publication with useful advice and information to help you to make your preparations for coming to Manchester.

Airport collection service (available in September) – Provides a warm welcome with free collection and transportation service from Manchester Airport to your accommodation.

Orientation programme – Our practical orientation courses cover everything from finding your way around, to using public transport and buying essential items, opening bank accounts, etc. In addition, Welcome Week and Orientation social events help you to make new friends, settle into your new life and relax a little before your studies begin.

For more information about orientation and welcome services, see:

www.manchester.ac.uk/international/supportservices

International student societies

The University has many student societies, including a variety which are run by and for specific international student groups. These are a great way to socialise and get involved in activities outside of your studies.

In addition, the International Society, based on campus, organises a comprehensive social and cultural programme for all students in Manchester.

International Advice Team

The University is committed to supporting international students at all levels. Our range of support includes a dedicated International Advice Team, which can provide assistance on any issues you may have during your time with us, including visa advice, or working in the UK. Please contact us via email: iat@manchester.ac.uk

Find out more

Contact the International Office:
international@manchester.ac.uk
www.manchester.ac.uk/international

"As well as the orientation programme specialised for new international students, there are lots of workshops and activities where we can learn how to start our UK life smoothly. Above all, I found the activities of the International Society very helpful and enjoyable – for example, the many fantastic coach tours around the UK that the International Society organises at a very reasonable cost."

Taiji Ueno, PhD Neuroscience
 From Kyoto, Japan

"The support and help provided for international students, like me, are really useful and thoughtful. From the orientation programme, to the English language sessions, from a variety of small cultural societies, to the big International Society, life here is easily adaptable to people from every corner of the world. I would say it has certainly lived up to my expectations, and far more beyond!"

Yonghui Ma, PhD Bioethics
 From Beijing, China

finance

Tuition fees

University tuition fees cover the cost of your study at the University, as well as charges for registration, tuition, supervision, examinations and graduation. By paying tuition fees, you are also entitled to membership of the Library, the Students' Union and the Athletic Union.

Tuition fees vary and are sometimes dependent on the type of subject being studied.

For all current tuition fees and further information relating to the fees due for individual programmes of study, refer online:

www.manchester.ac.uk/postgraduate/fees

Funding

You can either pay all your own tuition fees and living costs, or you can seek whole or partial funding from various sources. It is essential that you start thinking about how to fund your postgraduate studies as early as possible, since many funding bodies have strict deadlines. Please note that most funding bodies require you to hold at least a provisional offer of a place to study at the University before applying for a studentship.

As well as attracting substantial external funding, The University of Manchester has a significant number of its own funds within its Schools and Faculties. Contact the School or Faculty that you are thinking of applying to for further details of any available funding.

Full details of all sources of available funding, both external and internal, can be found by searching the postgraduate funding opportunities database at:

www.manchester.ac.uk/postgraduate/funding

Cost of living

Relative to some other UK cities, Manchester is an affordable place to live – in fact, the NatWest Student Living Index 2009 found Manchester to be the fifth most cost-effective student city in the UK. This is something to bear in mind as you calculate the process of essentials such as accommodation, food and books.

Estimated postgraduate living expenses *	Per year, 51 weeks (£)
Accommodation (average cost for self-catering halls)	£4,675
Meals	£1,885
Books and stationery (depending on your course, and if you buy new or second-hand)	£460
Clothes (including provision of warm clothing and footwear)	£460
Transport	£640
Other expenses (eg entertainment, sport, photocopying, phone calls, etc)	1,750
Total	£9,870

** This table presents approximate costs for the 2010/11 academic year. Actual costs will depend on your lifestyle.*

student profile

Name Silvia Galandini, student
Age 27
From Mantova, Italy
Course MSc in Social Change



What did you do before undertaking this course?

"In 2005, I graduated in International Studies at the Faculty of Political Sciences of the University of Torino (Italy). I did my masters degree in European Studies, and I graduated in 2008 with a thesis about the Yemeni community in Liverpool."

What funding do you receive?

"At the beginning of the academic year [in Manchester], I received the bursary offered by the Institute for Social Change: £1,000 paid towards my tuition fees."

How did you obtain this funding?

"I applied for my masters before May 2009, and I was therefore considered as a candidate for the bursary. I was selected on the basis of the first class masters degree and Right of Publication I achieved in Italy, with my thesis about the Yemeni community in Liverpool, as well as the award I was assigned by the Employers' Association of Torino as one of the best graduates of the University of Torino in 2008."

What has the funding meant to you?

"The ISC bursary represented not only an important support for funding my studies, but also a significant achievement. Indeed, knowing that the efforts made during my previous studies were contributing to my personal and also professional development was an invaluable fulfilment."

applying



How to apply

You can apply online for our taught and research degrees at:

www.manchester.ac.uk/postgraduate/howtoapply

If you are unable to apply online, please contact our Admissions Office for a printed application form (remember to include your postal address):

tel +44 (0)161 275 4740

pg-admissions@manchester.ac.uk

In some countries, we also have a network of Educational Consultants who can assist you with preparing and submitting your application. Visit the relevant country page in the international section of our website at:

www.manchester.ac.uk/international/country

Admission to our postgraduate courses and programmes is covered by our Student Admissions Policy. You can find this at:

www.manchester.ac.uk/postgraduate/howtoapply/policies

Entry requirements

The qualifications, skills and qualities needed for postgraduate study at Manchester vary from School to School. Use the 'find out more' sections in this prospectus to discover the relevant information for your chosen course or programme of study.

We recognise many different qualifications from around the world. For details of international entry requirements and equivalencies, visit:

www.manchester.ac.uk/international/country

English language requirements

A high level of English is required for all courses to ensure that you get the most from your studies. As part of your application, you will also need to provide evidence of your English Language proficiency to the required level (this can vary from course to course). If you need to undertake further studies in English language, the University Language Centre (ULC) provides a variety of British Council-accredited language programmes.

See pages 24-25 for more advice in this area.



Disability support / Applicants with additional support needs

We welcome applications from people with additional support needs as a result of a long-term medical condition, mental health difficulty, disability, or specific learning difficulty such as dyslexia, dyspraxia, etc. All such applications are considered on exactly the same academic grounds as other applications.

If you are a candidate with additional support needs, you can contact the admissions officer of the School in which you are interested. Alternatively, our University Disability Support Office (DSO) can offer you confidential advice and you can discuss any support needs you may have, arrangements that may be necessary, and the extent to which appropriate support may be available. The DSO can supply further information and a member of staff will be pleased to meet you, by prior arrangement, if you would like to visit.

Visit our website for more detailed information:
www.manchester.ac.uk/dso

Alternatively, contact our DSO direct:

tel +44 (0)161 275 7512/8518

minicom +44 (0)161 275 2794

fax +44 (0)161 275 7018

dso@manchester.ac.uk

Equality and diversity

The University of Manchester is committed to providing a positive learning environment free from discrimination, harassment and bullying, where all students are treated with respect and dignity.

We aim to ensure that all students have equal access to the full range of institutional facilities, wherever possible. We also involve and consult with students on key issues that are important to them.

Visit our website for more detailed information:
www.manchester.ac.uk/equalityanddiversity

Alternatively, please contact
the Equality and Diversity Team:
tel +44 (0)161 306 5857
equalityanddiversity@manchester.ac.uk

english language requirements and support

An ability to communicate effectively in English is vital to academic performance and progress at the University. Non-native English speakers must therefore have a high level of fluency in the English language to allow you to benefit fully from our lectures and tutorials. This will also be a valuable skill that can improve your job prospects at an international level.

Specific requirements

For most international students who have not achieved a grade C or above in GCSE, IGCSE, or O-level English, you will be required to demonstrate your English proficiency through an approved testing system, such as IELTS, TOEFL, or Cambridge ESOL. These internationally recognised assessments of English language proficiency are designed to determine the ability of non-native speakers of English who intend to study or train in English.

IELTS, for example, is accepted by most British, Australian, Canadian and New Zealand academic institutions. It is also accepted by many professional organisations, such as the UK General Medical Council.

Minimum requirements vary across postgraduate courses, but tend to be in the region of 6.5 to 7.0 IELTS. The course listings on our University website provide information on specific language requirements for individual courses.

The University does accept some other testing systems for individual countries. Find out information on these by visiting your country page on our international website (www.manchester.ac.uk/international), or by contacting our International Office.

The table opposite shows some common English language tests we accept at The University of Manchester.

Please note that IELTS and TOEFL scores remain current for two years. If you are applying with a certificate that was achieved more than two years prior to your application, you will need to retake the test.

To identify a suitable testing centre in your home country for IELTS or TOEFL, please contact your local British Council office. Alternatively, you can find information from the following websites: www.ielts.org www.ets.org (for information on TOEFL)



English language support

The University Language Centre (ULC) has over 30 years' experience of running English language courses for international students. These courses are accredited by the British Council. The ULC is an IELTS testing centre and its pre-sessional courses are accredited by BALEAP (British Association of Lecturers in English for Academic Purposes).

Find out more

Contact the International Office:
international@manchester.ac.uk
www.manchester.ac.uk/international

Common English Language tests accepted by The University of Manchester

IELTS / TEEP	TOEFL				NCUK EAP		Cambridge ESOL	
	PBT	CBT	TWE	IBT	GRADE	% Range	CAE	CPE
7.0	600	250	5.5	100	A	70-79	B	C
6.5	577	233	5.5	90	B	60-69	C	C
6.0	550	213	5	80	C	50-59	C	C
5.5	527	197	5	71	D	40-49	C	C

accommodation

We do everything we can to help all our new students settle in and find somewhere to live where they'll feel right at home. Whether you prefer university halls of residence, or private housing, Manchester has a massive choice of accommodation available for our postgraduate students.

Manchester offers you...

- More spaces in University-managed accommodation than virtually any other university in the country
- Extensive housing choice, from modern self-catering flats to traditional collegiate-style halls of residence
- The option of postgraduate-only University accommodation
- Guaranteed University accommodation for international (non-EU) students throughout your studies

University accommodation

With more than 9,200 rooms, The University of Manchester has more spaces in University-managed accommodation than virtually any other university in the country, almost all of which is within two miles of campus.

Some residences are reserved exclusively for postgraduates; in others, graduate students are roomed together.

We've got options to suit all tastes: from modern, self-catering flats, to traditional, collegiate-style, catered halls of residence. Both single and mixed sex accommodation is available, and there is the choice of en-suite or standard facilities.

We also offer some specially adapted rooms for students with disabilities, and have a limited supply of family and partner accommodation (from double rooms to two- and three-bedroom self-contained flats).

With the exception of some family accommodation, all rooms are internet-connected.



Costs

Accommodation costs vary, depending on facilities, but in 2010-11 the average costs are:

- £88 per week for a single self-catering room with shared facilities
- £111 per week for a single self-catering room with en-suite facilities
- £112 per week for a single room with shared facilities in a catered hall

International students guarantee

If you are an international student (ie non-UK/EU), you are guaranteed a place in one of our halls of residence for the full duration of your course, provided you meet the following conditions:

- Come to the University alone
- Have a firmly accepted place at the University
- Apply for accommodation by 31 August
- Reapply for accommodation in subsequent years by the due deadline and for the full academic session

If your application falls outside the conditions of the guarantee, you are still welcome to apply for University accommodation, but you should note that a room may not be available to you immediately.

Find out more

Contact the Accommodation Office:

tel: +44 (0)161 275 2888

fax: +44 (0)161 275 3213

www.manchester.ac.uk/accommodation

Private accommodation

Outside halls of residence, Manchester has plenty of private accommodation for rent. You can get information about properties available, plus more general housing advice, from Manchester Student Homes. Owned jointly by the Manchester universities, this is the city's only housing bureau that advertises University-approved accommodation.

tel +44 (0)161 275 7680

fax +44 (0)161 275 7684

manchestersudenthomes@manchester.ac.uk

www.manchesterstudenthomes.com

campus

The University of Manchester's location gives you the best of both worlds: city and campus. Our comprehensive facilities offer you plenty to do, see, explore and experience while furthering your studies as a postgraduate student at Manchester.

Manchester offers you...

- A balance between city life and campus community
- Outstanding facilities, boosted by ongoing investment
- On-campus museum, art gallery and theatre
- World-class sports facilities
- The UK's largest Students' Union

"Manchester's developed a surprisingly close-knit student community. The two halves of the campus are compact and close-by, so no one gets isolated."

The Push Guide to Which University

Our campus boasts a distinctive blend of architecture, from grand traditional Victorian buildings, to innovative brand-new facilities. Although it covers a large area close to the city centre, it is full of quiet corners, landscaped gardens and secluded quadrangles.

Currently undergoing an exciting period of transformation and improvement, we are well on the way to completing the largest programme of capital investment ever seen in British higher education.

Library and information services

With more than four million printed items in stock – including some of the greatest printed books and manuscripts ever produced, and a collection of electronic resources that is unrivalled in the country – The John Rylands University Library (JRUL) is one of the best-resourced academic libraries in the UK.

JRUL is also widely recognised as one of the world's great research libraries, and is the only one of the country's National Research Libraries to be located outside of the South of England.



Faculty Teams look after the needs of students of all subjects taught and researched at the University. As part of the University's commitment to research skills training, the Library offers a high quality skills programme specifically aimed at researchers and their needs.

The Main Library has long opening hours, including 24-hour opening during exams. For those times you are unable to visit, the vast majority of the JRUL's electronic resources can be used remotely via the web.

www.manchester.ac.uk/library

IT services

The University's teaching and research activities are supported by extensive IT services. Our facilities include:

- More than 3,000 student PCs accessing a huge range of software, academic data and resources from across the world

- WiFi networking in key locations across campus
- University halls of residence fully networked via the HORNET system (a small yearly fee applies for private halls of residence), which provides high-speed access to your University account and the internet from your study bedroom
- Access to computer facilities 24 hours a day in selected clusters on campus and in Owen's Park halls of residence
- University email account and a secure personal file storage area on the University network for all students

If you have demanding computer requirements, our specialist research support services offer academics and researchers access to national datasets, visualisation and high-performance computing.

See: www.manchester.ac.uk/rcs

www.manchester.ac.uk/itservices



Cultural facilities

Manchester claims to be the cultural capital of the North, and we are lucky enough to have some of the city's finest cultural assets here on our University campus.

These key visitor attractions include:

The Manchester Museum, where you can come face-to-face with live reptiles, admire ancient art from Egypt and meet Stan the T.rex. Over the next year, come along and see the amazing re-development of our much-loved mammals gallery, or find out about China in our China: Journey to the East exhibition on tour from the British Museum.

www.manchester.ac.uk/museum

The Whitworth Art Gallery, ten minutes' walk down the road, provides further attractions. In the leafy setting of Whitworth Park, the Gallery contains one of the world's finest collections of English watercolours, as well as an inspiring mix of historic and contemporary art works. An internationally acclaimed exhibitions programme complements the Gallery's own outstanding collections of prints, drawings, sculptures, textiles and wallpapers.

www.manchester.ac.uk/whitworth

Contact is Manchester's award-winning home for explosive new theatre, inspiring future artists and leaders to take creative risks and make art, drama, spoken word and music.

www.contact-theatre.org

The Martin Harris Centre for Music and Drama

This is a performing space comprising a concert hall, a studio theatre and an electroacoustic music studio. It hosts many musicians, performers and prize-winning authors. It provides a popular space for music and drama events and holds a reading series that has in the past featured such literary luminaries as Martin Amis, Will Self and John Banville.

www.manchester.ac.uk/martinharriscentre

The John Rylands Library, Deansgate houses some of the most significant books and manuscripts ever produced. The magnificent neo-gothic building in Manchester's city centre is a major visitor attraction, as well as a research library of world renown. Collections include exquisite medieval illuminated manuscripts and examples of the earliest forms of European printing, including the Gutenberg Bible, as well as the personal papers of distinguished historical figures, including Elizabeth Gaskell, John Dalton and John Wesley.

www.manchester.ac.uk/library



The University's Jodrell Bank Discovery Centre, based in the heart of the Cheshire countryside, showcases the work of the world-famous Lovell Telescope and the research of the Jodrell Bank Centre for Astrophysics, and other connected groups within the University. The University was recently awarded funding to build exciting new visitor facilities at Jodrell Bank, which will open in summer 2011. The grounds and gardens are also being upgraded to include new pathways and a new maze based on the structure of our own galaxy, the Milky Way.
www.manchester.ac.uk/jodrellbank

Sport and fitness

Sport and fitness is very much a part of student life at the University. With a variety of sports clubs and fantastic facilities, we like to think we have something for everyone. We aim to get everyone involved in creating a more active campus and encourage you to find the right lifestyle balance to fit in the recommended 30 minutes of physical activity three times a week!

You can take part in a range of organised activities through the following programmes:

- **Health and Fitness:** 80+ weekly health, fitness and wellbeing classes, from yoga to high energy aerobics, plus a new strength-building class
- **Campus Sport:** 3,500 students take part in the intra-mural leagues each week, giving beginners and recreational players the chance to play in a fun, yet competitive environment
- **Athletic Union:** 46 AU sports clubs compete weekly against other universities in the British University and Colleges Sport league and championships (currently ranked 9th)
- **Sport Scholarships:** Receive up to £2,500 worth of support through our range of scholarships, plus expert training and advice from our high performance centres
- **Sport Volunteering:** Gain valuable CV-building experience, develop personal skills and gain coaching accreditations through this scheme



Prefer to play or exercise in your own time? As a student, you will be entitled to discounted fees and memberships at any of the following sports facilities:

- **Armitage Centre:** A fully equipped fitness gym; grass, all-weather and five-a-side pitches; a double-sized indoor sports hall; a multi-activity room; fitness classes
- **Sugden Sports Centre:** Fantastic fitness facilities, workout classes and various indoor sports in two double-sized sports halls, all at the heart of campus
- **Manchester Aquatics Centre:** Two Olympic-sized 50-metre swimming pools, built for the 2002 Commonwealth Games, plus other mixed leisure facilities
- **Wythenshawe Sports Ground:** 27 full-size pitches covering 90 acres – one of the biggest UK facilities dedicated to football

We also have close links to many of Manchester's Commonwealth Games facilities, including Manchester Velodrome, Regional Tennis Centre, National Squash Centre, Regional Athletics Centre and City of Manchester stadium.

For more information on how to get involved with sport and fitness at the University, see:

www.manchester.ac.uk/sport

Students' Union

The University of Manchester Students' Union (UMSU) is the largest and most comprehensive SU in Europe – and therefore offers a unique wealth of services to our students. From live bands to welfare advice, the Union is the hub of student life.

The annually elected team includes a Postgraduate and Mature Students' Officer, Welfare Officer, Academic Affairs Officer, International Students' Officer and Women's Officer, as well as an officer for each Faculty.

UMSU has some of the largest and most active student societies in the country. With around 200 different societies operating out of the Union, covering a huge range of interests, talents and hobbies – from martial arts to modern dance and Japanimation to Judaism – you're sure to find something that appeals to you.



The Burlington Society is specifically for postgraduate and mature students and has its own premises, offering tailored information, advice and support, as well as social events, a coffee bar and a popular vegetarian café. See the society website: www.manchester.ac.uk/burlington

Many societies are also run by and for international students, including the welcoming International Society.

The Union is home to Manchester Academy, one of the city's best live venues hosting top name gigs. Smaller and up-and-coming unsigned bands play at our smaller venues, Academy 2 and 3 and Club Academy.

The Students' Union complements the University provision of support and welfare services. Both our Union buildings have advice centres that are staffed by professional advisers and specially trained student officers. They can help you with academic and non-academic matters and, in particular, with the needs of international, mature and female students.

www.umsu.manchester.ac.uk

Find out more

So far we've given you just a taste of what you can find here – so why not come and visit us to see for yourself why we believe that The University of Manchester offers you so much more than your average university campus?

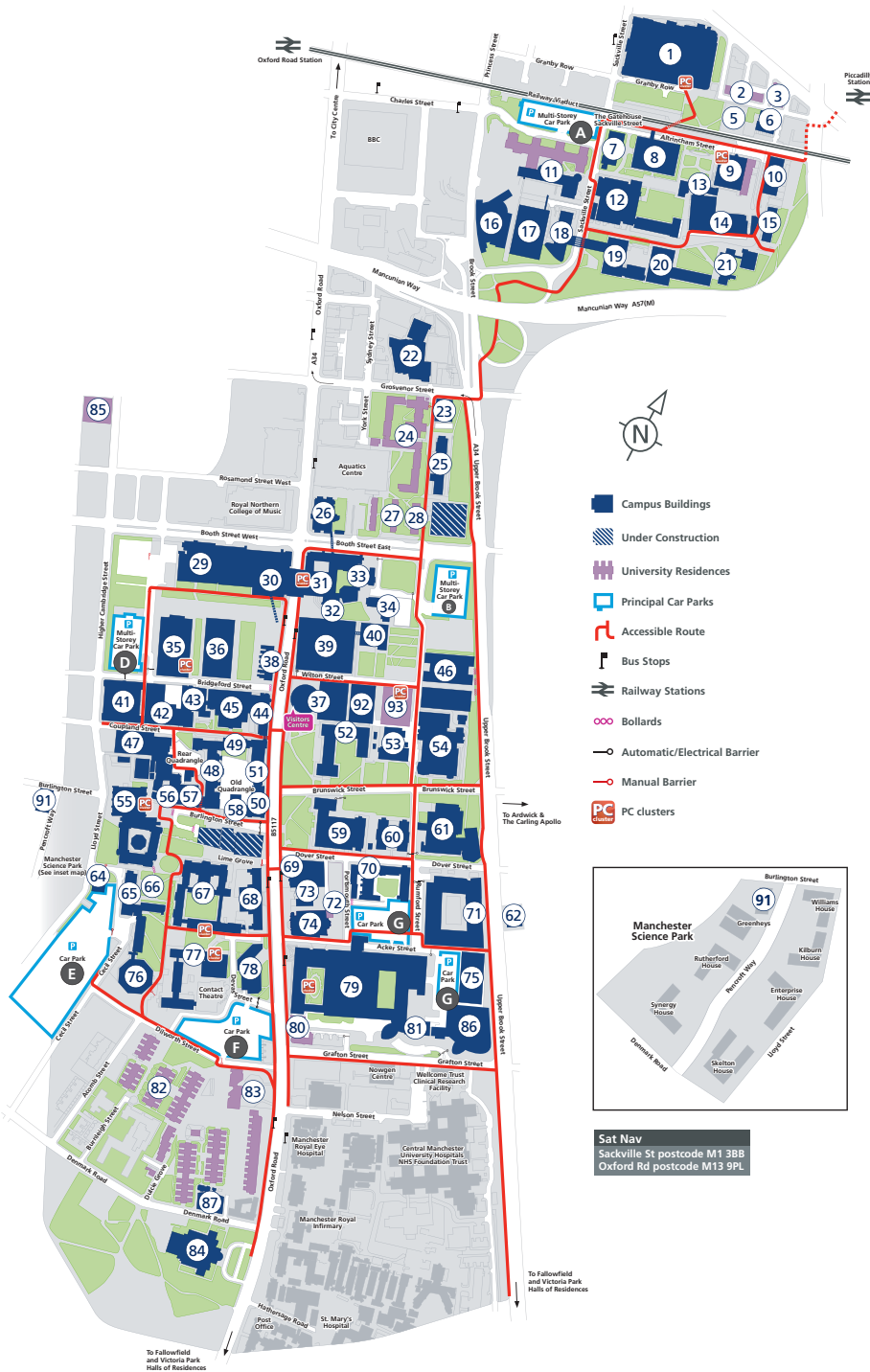
If you can make it, you could join one of our University Open Days, or take your own trip around the grounds and soak up the atmosphere at one of the many cafes, bars and restaurants on campus.

Alternatively, simply find out more online:

www.manchester.ac.uk/postgraduate

campus map

- 1 Sackville Street Building
- 2 Lambert Hall
- 3 Fairfield Hall
- 5 Chandos Hall
- 6 Echoes Day Nursery
- 7 Paper Science Building
- 8 Renold Building
- 9 Barnes Wallis Building /
Students' Union /
Wright Robinson Hall
- 10 Vision Centre /
Moffat Building
- 11 The Manchester Conference
Centre and Weston Hall
- 12 Pariser Building
- 13 Staff House Sackville Street
- 14 The Mill
- 15 Morton Laboratory
- 16 Manchester Interdisciplinary
Biocentre - John Garside
Building
- 17 George Begg Building
- 18 Faraday Tower
- 19 Faraday Building
- 20 Ferranti Building
- 21 Maths and Social
Sciences Building
- 22 Sugden Sports Centre
- 23 Oddfellows Hall
- 24 Grosvenor Halls
of Residences
- 25 Materials Science Centre
- 26 Manchester Business School
East
- 27 Bowden Court
- 28 Ronson Hall
- 29 Manchester Business School
West
- 30 Precinct Shopping Centre
Harold Hankins Building
Devonshire House
- 31 Crawford House
- 32 St Peters House/Chaplaincy
- 33 Crawford House Lecture
Theatres
- 34 Prospect House
- 35 Humanities Bridgeford Street
- 36 Arthur Lewis Building
- 37 University Place
- 38 Waterloo Place
- 39 Kilburn Building
- 40 Information Technology
Building
- 41 Dental School and Hospital
- 42 Martin Harris Centre
for Music and Drama
- 43 Coupland Building 1
- 44 The Manchester Museum
- 45 Rutherford Building
- 46 Alan Turing Building
- 47 Coupland Building 3
- 48 John Owens Building
- 49 Beyer Building
- 50 Whitworth Hall
- 51 Whitworth Building
- 52 Williamson Building
- 53 Roscoe Building
- 54 Schuster Building
- 55 John Rylands Library
- 56 Schunck Building
Burlington Rooms
- 57 Student Services Centre
- 58 Christie Building
- 59 Simon Building
- 60 Zochonis Building
- 61 Chemistry Building
- 62 Dryden Street Nursery
- 64 Environmental Services
Unit
- 65 Mansfield Cooper Building
- 66 Stephen Joseph Studio
- 67 Samuel Alexander Building
- 68 Students' Union Oxford Road
(also at number 9)
- 69 William Kay House
- 70 Dover Street Building
- 71 Michael Smith Building
- 72 Vaughan House
- 73 Avila House RC Chaplaincy
- 74 Holy Name Church
- 75 AV Hill Building
- 76 AQA
- 77 Ellen Wilkinson Building
- 78 The Academy
- 79 Stopford Building
- 80 Horniman House
- 81 The Manchester Incubator
Building
- 82 Whitworth Park
Halls of Residence
- 83 Grove House
- 84 The Whitworth
Art Gallery
- 85 Opal Hall
- 86 Core Technology Facility
- 87 Denmark Building
- 91 McDougall Centre
- 92 Jean McFarlane
Building (*formerly 37b*)
- 93 George Kenyon
Building and Hall
of Residence
(*formerly 37a*)



city

Welcome to Manchester: a lively, vibrant metropolis with events, amenities and cultural attractions to appeal to every lifestyle. The University of Manchester is at the heart of this exciting city, both geographically and culturally – and our own buildings, history and people are integral to Manchester's unique, appealing character.

"Shopping, bars and the epic architecture of the city's industrial past and vibrant present are all a short walk away..."

The Guardian University Guide

Meet Manchester...

...a dynamic, cosmopolitan city with a sense of style; an illustrious city of opportunities; a place where you can study, learn, enjoy yourself and join in. As a postgraduate student here, you'll be welcomed into Manchester's diverse, sociable community, where imagination thrives and ambitions are realised.

Although Manchester is one of the largest cities in the UK, with all the amenities you would expect from a modern metropolis, it is also extremely accessible and easy to navigate. It has a compact and friendly centre that's easy to get around, either on foot or via an excellent and extensive public transport system. This includes relatively inexpensive buses, taxis, a modern Metrolink tram system and a large train network with connections throughout the UK.

Manchester International is a major airport with daily flights jetting to 225 global destinations – more than any other UK airport – and a frequent air-shuttle service to London's two main airports, Heathrow and Gatwick, as well as to most major European cities and further afield.



History and architecture

Manchester's ability to welcome and embrace change throughout its history has given the city a rare energy.

Manchester was at the epicentre of the industrial revolution, and the spirit that brought the world into the modern age is evident in its trademark Victorian buildings and monuments, such as the gothic Town Hall in Albert Square, or the University's own Old Quad.

In more recent years, the city centre has been reshaped: new public spaces have been created and imaginative buildings and developments have appeared, transforming Manchester's skyline.

In the last couple of decades, the Imperial War Museum North (the first British building designed by Daniel Libeskind), the Bridgewater Hall and the Beetham Tower have all made a dramatic impact on the city, both architecturally and culturally.

This huge investment and commitment is helping to make our elegant city one of the most attractive and appealing in Europe.

Eating and drinking

The city's pavement cafés and bars offer the perfect opportunity to drink in this scenery along with your tipple of choice, from coffee to cocktails. Food-wise, you're spoilt for choice: alongside diverse British restaurants and fantastic local fare, there's a huge range of international cuisine to sample. With the largest Chinese community outside of London, Manchester's Chinatown is the place to head to for oriental dishes, while the 'curry mile' in Rusholme is lined with shops and restaurants selling Indian, Pakistani, Sri Lankan and Middle Eastern food. Other communities are no less well represented, from Italian to Indonesian, Turkish to Thai.

Music and theatre

Manchester's vibrant music scene has launched some of the great names in music history, including The Smiths, Joy Division, Oasis, Happy Mondays and the Stone Roses. The city welcomes both famous names and new talent alike, and is a major destination for touring bands.

Big name live music venues include the Apollo, the MEN Arena and the Academy here at our University's Students' Union, which all form an important part of the city's musical landscape.



For smaller bands and unsigned talent, you'll find a host of small venues, including Dry Bar and Night and Day; plus there are also active folk, northern soul and jazz scenes.

Classical music is very important to Manchester, with Chetham's School of Music and the Royal Northern College of Music both based here. Audiences have a wide choice of classical events held at the Bridgewater Hall (home of the Hallé orchestra and where the BBC Philharmonic perform), the Royal Northern and The Lowry.

Theatre-goers can find a range of performance styles, from highbrow to avant garde, at one of the city's many theatres. The Lowry's theatre hosts contemporary productions, such as Opera North, while the Royal Exchange's productions include everything from Shakespeare to Noel Coward. Fans of musicals head to Oxford Road's Palace Theatre.

Museums and galleries

There are more than 50 museums and galleries in Greater Manchester, most of which are free to enter. Two of the best – the Whitworth Art Gallery and the Manchester Museum – are owned by the University.

The Whitworth, Cube and the Cornerhouse all mix contemporary shows with classics, while the Manchester Art Gallery hosts major new exhibitions alongside its much loved Pre-Raphaelite collection.

The Imperial War Museum explores the horrors and heroics of war, while The Lowry holds much of the work of the famous British artist LS Lowry, whose distinctive industrial landscapes and thin, harried workers are representative of Manchester's past.

The National Football Museum is also set to relocate to Manchester, opening in the Urbis building in autumn 2011.

Sport

Manchester's biggest name (the University aside) is Manchester United FC. Unsurprisingly, their world-famous home at Old Trafford is the largest club ground in Britain. Rivals Manchester City are based on the other side of town at their Eastlands stadium, originally built for the 2002 Commonwealth Games. The Games left a legacy of world-class sporting facilities, including the Manchester Aquatics Centre on the University campus, and the Manchester Velodrome.



National and international cricket can be enjoyed at Lancashire's Old Trafford Ground, rugby union at Sale Sharks and rugby league at Salford, or nearby Wigan and Warrington.

Shopping

The city's reputation as a shoppers' paradise is well justified. High street chains from Primark to Harvey Nichols sit alongside international designers, including Vivienne Westwood, DKNY and Paul Smith, in the city centre. Manchester's independent side is also flourishing: interesting one-off shops abound, particularly in the city's burgeoning Northern Quarter, where you'll find products from all over the world – music, movies, fashion and more. Then there's the Trafford Centre, a massive retail and leisure complex located out of town, for hundreds of diverse outlets under one convenient roof.

Beyond the city

Manchester is a great base from which to explore Britain's North West. The natural beauty of the Peak District, Lake District and North Wales are all within easy reach, as are the picturesque, historic towns of Chester, York and Buxton. The coast is less than an

Did you know?

Manchester is the best place to live in the UK, according to the latest 'liveability' survey by the Economist Intelligence Unit.

The city is also ranked 46th in the world – five places ahead of London.

Aside from the capital, no other UK cities made the list of 140, which considers education, stability, health care, infrastructure, culture and environment.

Source: Economist Intelligence Unit Liveability Survey, 2009

Worried about finance? Manchester is also the fifth most cost-effective student city in the UK.

Source: NatWest Student Living Index, 2009

hour's drive or train journey away – choose between the unspoilt dunes and pine forests of Formby and the illuminated entertainment of Blackpool. Or further afield lies London, just over two hours away by train.

city map

All directions listed are to the Visitors Centre in University Place building 37 on the campus map (see pages 34-35).

By air

Manchester Airport is approximately 10 miles from the University. The taxi fare from Manchester Airport is around £20.

By bus

From Piccadilly Train Station catch the 147.

From Piccadilly Bus Station catch any of the following:
14, 16, 41, 42, 43, 44, 48, 111, 140, 142, 157 and 250

From Victoria Train Station, catch the Tram to Piccadilly Bus Station and catch one of above services.

From Manchester Airport catch the 43.

By road

All approach routes are clearly signposted 'Universities'.

M62 (Eastbound), M602

Leave the M62 at J12 and join the M602. At the end of the M602 join Regent Road (A57) and continue along and join the A57M (Mancunian Way). Leave at the second exit, sign-posted A34 (hair-pin bend). To go to Sackville Street, keep right. To go to Oxford Road, keep left and join the A34 (dual carriageway) and get in the right hand lane. Turn right at the first set of traffic lights into Grosvenor Street. Stay in the left hand lane and turn left at the next set of traffic lights onto Oxford Road (B5117).

Go straight on through the next set of traffic lights and the University's Visitors Centre is on the left hand side in University Place, (building 37 on the campus map).

M62 (Westbound), M60

Leave M62 at J18 and join M60 ring road. Leave M60 at J22 and turn right at traffic lights onto Oldham Road (A62). Continue along until the end and turn left to join Great Ancoats Street (A665). Follow signs for the Universities and join the Mancunian Way (A57M). Leave at the second exit onto Higher Cambridge Street. Turn left at the next set of traffic lights onto Booth Street West. Continue to the next set of traffic lights and turn right.

The University's Visitors Centre is on the left hand side in University Place, (building 37 on the campus map).

M6/M56

Leave the M6 at Junction 19 and turn right onto the A556. Follow signs for Manchester Airport and join the M56. Stay on M56 until it joins Princess Parkway (A5103).

Continue for a further four miles before turning right at the Royal Brewery into Moss Lane East (B5219). Continue to the T-junction and turn left onto Oxford Road (B5117). Proceed down Oxford Road past the hospitals and the Holy Name Church on the right hand side. The University's Visitors Centre is on the right in University Place (building 37 on the campus map).

From M67

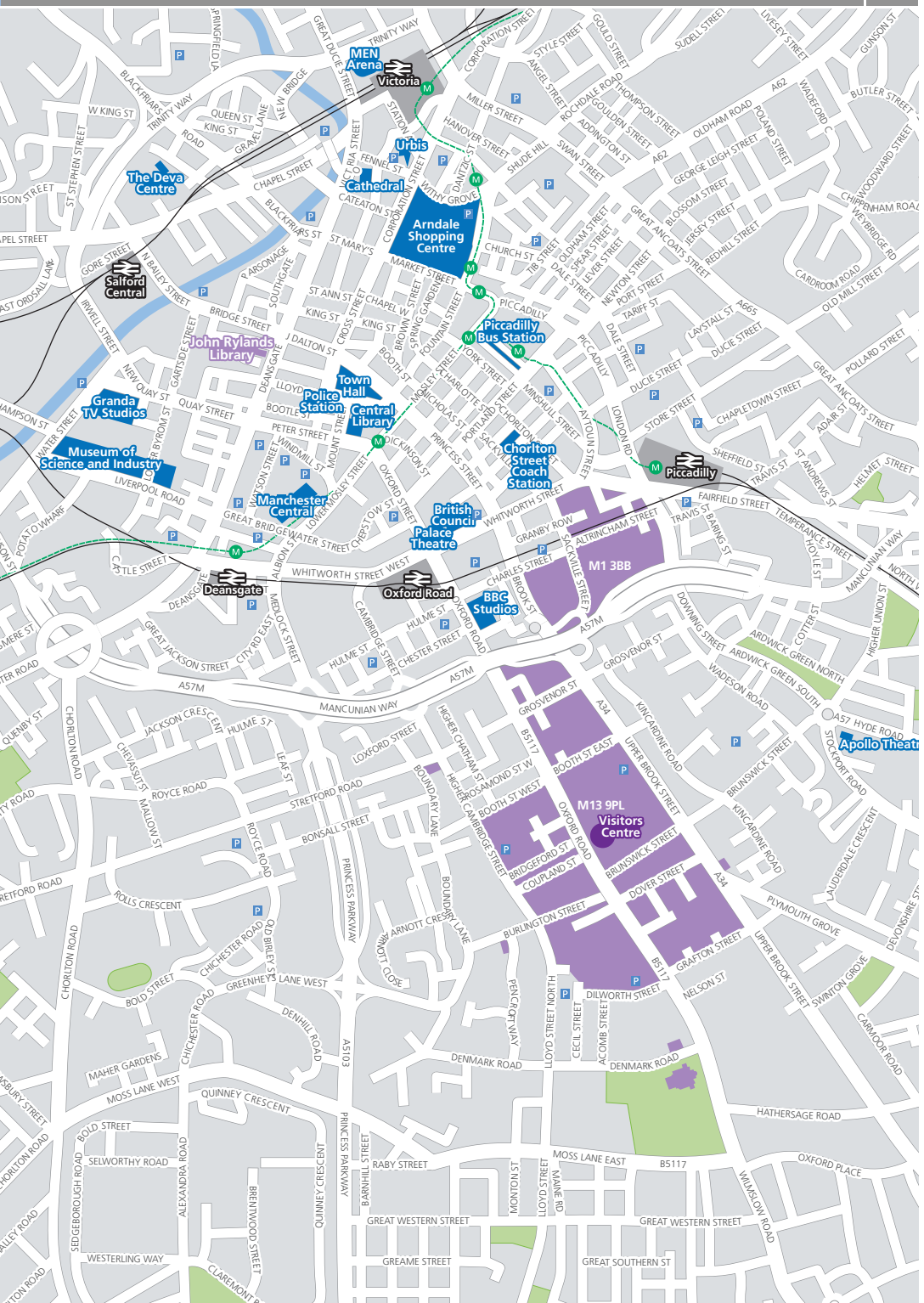
At the end of the motorway, join Hyde Road (A57). Continue along for approximately three miles, following signs for the city centre.

Upon reaching a major roundabout (the Apollo Theatre is on the left) take the second exit, Brunswick Street (signposted 'Universities'). Continue along and go straight through the next set of traffic lights. Continue to the T-junction and turn right onto Oxford Road (B5117). The University's Visitors Centre is on the right hand side in University Place (building 37 on the campus map).

Sat Nav

Sackville St postcode
M1 3BB

Oxford Rd postcode
M13 9PL



faculty of engineering and physical science



Our research

Many major advances of the 20th century began here, including work by Ernest Rutherford leading to the splitting of the atom, and the development of the world's first stored program computer.

Today, research activities at the Faculty of Engineering and Physical Sciences (EPS) remain at the cutting edge, funded by an annual research income of around £70 million. The quality, breadth and volume of this research are unrivalled: more than 70 specialist research groups and centres each undertake pioneering research into areas ranging from microwaves and nanotechnology to tissue engineering and aeronautics.

Modern new facilities include the £40 million Alan Turing Building, which houses Mathematics, Physics and Astronomy, and the Photon Science Institute. Work has also started on a £30 million state-of-the-art facility for the School of Chemical Engineering and Analytical Science.

We're involved in many multidisciplinary research institutes at the University, tackling research and

providing interdisciplinary research training programmes, which are supported by leading scientists from across the University, in areas from nuclear fission and engineering to sustainable consumption. See Manchester Doctoral College (pages 96-99) for more details.

With decades of experience and a strong track record of industry collaborations, our Schools are highly rated in national and global evaluation exercises, and our graduates are recognised for their ability to flourish in industrial and business environments. Key industrial partners, like Shell, Rolls-Royce, BAE Systems, IBM, BP and Syngenta, and major pharmaceutical companies such as AstraZeneca and GSK, are central to some of the Faculty's most prolific research and continued innovation and success.

We look forward to welcoming and developing your own skills, enthusiasm and expertise as a postgraduate student in the Faculty of Engineering and Physical Sciences.

www.manchester.ac.uk/eps



Centres of excellence

Dalton Nuclear Institute

- Set to become one of the world's elite centres for nuclear teaching and research
- Focuses on crucial issues of waste disposal, decommissioning and civil reactor technologies
- Chosen by the Government as one of the bodies responsible for managing the UK's National Nuclear Laboratory

University Technology Centre (UTC)

- Dedicated to nuclear technology
- Opened by Rolls-Royce, the global power systems company

Joule Centre for Energy Research

- Major centre focusing research expertise on energy and environment

The Tyndall Centre for Climate Change

- Leads the development of new sustainable and renewable technologies
- Its research informs UK energy policy

Manchester Interdisciplinary Biocentre (MIB)

- £38 million interdisciplinary research centre
- Houses more than 600 scientists and 80 research groups

Photon Science Institute

- Fosters collaborations across the physical, engineering, material, medical and biological sciences in photon science research and knowledge transfer

The University of Manchester Aerospace Research Institute (UMARI)

- Works with leading aerospace companies to study all aspects of aerospace engineering
- Draws on the excellent facilities of the University-based Northwest Composites Centre

Jodrell Bank Centre for Astrophysics

- At the heart of the E-Merlin project to link up UK radio telescopes using a high-speed data network, which will allow astronomers to probe the evolution of galaxies, stars and planets
- Designed and built radio receivers for a major instrument on board the European Planck satellite

EPS stats

70+ research centres and groups
 600+ academic staff
 £75 million predicted research income

student profile

Name Tom Feehally
Age 25
From UK
Degree PhD Electrical and Electronic Engineering
Graduates 2012



Why did you choose your degree?

"I completed a masters degree in Mechatronic Engineering at Manchester. I also undertook a year's industrial experience with Rolls-Royce Plc. During my time in industry, it became apparent that the work I was undertaking was of high importance commercially and well suited to my skills and interests. There was plenty of scope for me to carry out meaningful research in an up-and-coming field.

"Although I had never planned to do a PhD, I was happy to accept the offer of industrial support to carry out research."

Why Manchester?

"Although I'm not originally from Manchester, I now call the city home. It is surprisingly friendly for such a large city and continually offers new things to explore.

"Having looked at other universities within the UK, I felt confident that Manchester would offer me a good return for my investments.

"The University has superb industrial links, which serve me well. The research group I am associated with is internationally recognised and very highly regarded, as shown by the number of companies keen to invest in the group for access to their expertise. I have no doubt that this will stand me in good stead when I graduate."

What do you think of your course?

"The course allows me to carry out my research work with minimum interference, safe in the knowledge that support is available whenever necessary. Staff are exceptionally friendly and helpful, and have a vast amount of skill and experience. They have been highly supportive of my ambitions and undertakings.

"Departmental facilities are of a high standard; laboratories are very well equipped, with plenty of knowledge available for the range of specialist machines. The nature of the working environment means that my next step, to a job outside of academia, does not feel like a huge leap.

"My project receives significant input from Rolls-Royce Plc, who specialise in the production of gas turbine systems, in the form of data, expertise and financial backing."

What do you most value about studying here?

"The reassurance that I am studying within a top research group and that the work I am doing has significant real world importance. Being surrounded by a high level of expertise is stimulating and rewarding.

"The nature of the working environment means that my next step, to a job outside of academia, does not feel like a huge leap."

researcher profile

Name Dr Ian Cotton
Job title Professor of High Voltage Technology
School Electrical and Electronic Engineering



What are your specialist areas of interest?

"I work in our high voltage laboratory: the largest in any UK university, with test facilities including a 2MV generator that can make a 4m spark.

"I work on a range of topics that relate to high voltage, such as lightning protection and power systems."

What are you currently working on?

"I'm lucky enough to work on a wide variety of projects. A particularly special one is our work on the design of a new cross-arm for overhead line towers, which can make large power lines in the countryside capable of transmitting around 150% more electricity without increasing their size.

"As we use more renewable energy, which must be transported across the country, this will reduce the need for building new power lines, which some people find visually offensive."

Why is Manchester a good place for research in your area?

"The University has expertise in a huge range of disciplines, which is essential in my research. Working with colleagues from other schools and faculties gives me access to other skills that I do not possess, but which can enhance my projects. My colleagues are always very friendly and open to new ideas."

What relevant facilities and resources does Manchester have?

"The high voltage laboratory is just one of our many world-class, industrial-scale facilities. With high quality computational facilities and the latest journals, it is difficult not to find whatever we need to support our research. Our high level of research funding ensures we can keep investing in key facilities and resources."

How does your research benefit postgraduate students?

"In my teaching on the MSc in Electrical Power Systems Engineering, I draw on knowledge from my research, from fundamental thinking to industrially driven work. This means I can advise on problems that industry faces with current technologies, and which technologies are likely to develop in the longer term. Carrying out research also means we can afford to employ more staff. When I teach, I therefore end up teaching my specialist subject."

What makes the Faculty of EPS a great place for postgraduate study?

"Whether you are working on an engineering problem, something from the sciences or a fundamental mathematical theory, you need people around you who are driven to understand more about the world around them. I have always found the Faculty to be a place where you are inspired by the wide variety of world-class research and teaching."

Chemical Engineering and Analytical Science

PROFILE

56 Teaching staff

60 Research staff

120 Taught postgraduates

150 Research postgraduates

RAE 4*20% 3*45% 2*35% 1*0%

Chemical Engineering and Analytical Science at Manchester is a world leader in industrially relevant research and teaching that brings together a diverse range of disciplines focused on science and technology for the process industries. We are world-renowned and have an excellent reputation amongst employers for the high calibre of our graduates.

We are unique in the UK because of the breadth of disciplines represented, including chemical engineering, bioscience, physics, chemistry, mathematics and analytical and measurement science. The School is a vibrant and stimulating environment in which to study and gives our students experience of an interdisciplinary environment, which is highly valued by industry worldwide. Employers know that our courses are academically challenging and our graduates are top class – that is why they will be so keen to employ you.

Our innovative teaching style and state-of-the-art facilities will help to make your experience as a postgraduate student hugely enjoyable. You can benefit from using equipment such as high-tech monitoring and measuring devices, advanced computing and industrial-scale process plant test rigs.

You will have even greater access to expertise and facilities through the University's Research Institutes, such as the Manchester Interdisciplinary Biocentre and the Photon Science Institute.

Taught courses are strongly informed by our leading-edge research and have been designed with input from world-renowned academics and the innovators and managers of prestigious international companies. You can choose from a range of flexible study options, which include distance-learning courses, giving you the choice of studying without taking a career break, or without moving to Manchester.

Our research groups are: The Environment and Sustainable Technology; Process Integration; Instrumentation; Analytical Science; Multi-Scale Modelling; Biocatalysis; Systems Biology; Colloids, Crystals, Interfaces and Materials; Chemical Engineering; Generic Theme: Chemical Engineering and Analytical Science.

Find out more

www.manchester.ac.uk/ceas/postgraduate

Research programmes

pgr-ceas@manchester.ac.uk
tel +44 (0)161 306 4360
fax +44 (0)161 306 4865

Taught courses

pgt-ceas@manchester.ac.uk
tel +44 (0)161 306 4837
fax +44 (0)161 306 4865



You can apply online to all of the following:

Research programmes

Analytical Science PhD/MPhil
FT PT

Biocatalysis PhD/MPhil
FT PT

Chemical Engineering PhD/MPhil
FT PT

Chemical Engineering and Analytical Science PhD/MPhil/MEnt
FT PT

Chemical Engineering and Analytical Science EngD*/EntD
FT

Chemical Engineering and Analytical Science Integrated PhD
FT

Colloids, Crystals, Interfaces and Materials PhD/MPhil
FT PT

Instrumentation PhD/MPhil
FT PT

Multi-Scale Modelling PhD/MPhil
FT PT

Process Integration PhD/MPhil
FT PT

Systems Biology PhD/MPhil
FT PT

The Environment and Sustainable Technology PhD/MPhil
FT PT

**For further details, see the EngD section on page 14*

Doctoral Training

Centre programmes**

Engineering for Manufacture EngD
FT

Integrative Systems Biology
FT

Nanoscience
FT

Nuclear FIRST
FT

*** For further details, see Manchester Doctoral College on pages 96-99*

Key
FT full-time
PT part-time
DL distance learning

Research Assessment Exercise % of research activity judged to be:

4* world leading **2*** internationally recognised
3* internationally excellent **1*** nationally recognised

Taught courses

Advanced Chemical Engineering
MSc/PgDip/PgCert

FT PT

Advanced Chemical Process Design
MSc/PgDip/PgCert

FT DL

Advanced Process Design for
Energy MSc/PgDip/PgCert

FT DL

Biotechnology MSc/PgDip/PgCert

FT PT

Chemical Engineering with Design
MSc/PgDip/PgCert

FT PT

Environment and Sustainable
Technology MSc/PgDip/PgCert

FT PT

Refinery Design and Operation
MSc/PgDip/PgCert

FT PT DL

Chemistry

PROFILE

66 Teaching staff

142 Research staff

212 Research postgraduates

RAE **4*20%** **3*45%** **2*35%** **1*0%**

The School of Chemistry continues Manchester's long and distinguished history of chemical innovation, from the birth of modern chemistry with John Dalton, through to recent Nobel Prize winners and Manchester students John Polanyi and Michael Smith.

We are the premier institution for chemistry in the North of England, and one of a handful of truly internationally competitive chemistry schools in the UK. We also have one of the largest research schools in the UK, with more than 200 postgraduate students and over 700 undergraduates.

In the 2008 Research Assessment Exercise, the School was ranked fourth in the UK, based on "research power". We have comprehensive academic coverage across the chemical sciences, excellent in-depth research in all the core sub-disciplines of chemistry, outstanding facilities and a strong portfolio of postgraduate degree programmes.

Our School is a major partner in the Manchester Interdisciplinary Biocentre (MIB), a novel research institute housed in an innovative new MIB building and in the Photon Science Institute and Dalton Nuclear Institute. The MIB building is specifically designed to accommodate an interdisciplinary research community derived from the biosciences, physical sciences, engineering and mathematics, with the aim of becoming a powerhouse of innovative research and technology development at the interface with biology.

We currently have a large portfolio of EPSRC research and BBSRC grants, alongside significant industrial and European funding, and the School currently holds £50 million of research grant. We enjoy world-class facilities and have several other centres strongly supported by industry, including:

- Centre of Excellence for Biocatalysis (CoEBio3)
- Organic Materials Innovation Centre (OMIC)
- Centre for Radiochemistry Research
- Centre for Nanoporous Materials
- Michael Barber Centre for Mass Spectrometry

OMIC and the Centre for Nanoporous Materials form part of the Knowledge Centre for Materials Chemistry.

Find out more

www.manchester.ac.uk/chemistry

pg.chemistry@manchester.ac.uk
tel +44 (0)161 306 9279
fax +44 (0)161 275 4598

You can apply online to all of the following:

Research programmes

Biological Chemistry PhD/MPhil
FT PT

Chemistry EngD*/EntD/MSc by Research

FT PT

Chemistry PhD/MPhil/MEnt

FT PT

Inorganic Chemistry PhD/MPhil

FT PT

Materials Chemistry PhD/MPhil

FT PT

Organic Chemistry PhD/MPhil

FT PT

Physical Chemistry PhD/MPhil

FT PT

Theoretical Chemistry PhD/MPhil

FT PT

**For further details, see the EngD section on page 14*

Doctoral Training Centre programmes**

Engineering for Manufacture EngD

FT

Nanoscience

FT

Nuclear FiRST

FT

Nuclear EngD

FT

***For further details, see Manchester Doctoral College on pages 96-99*

Taught courses

Chemistry MSc/PgDip/PgCert

FT PT

Polymer Materials Science and Engineering*** MSc/PgDip/PgCert

FT PT DL

****Joint course with School of Materials.*



Computer Science

PROFILE

Top rated for research

World-class facilities

Unrivalled depth and breadth of expertise

Alumni in top jobs in industry and research

RAE **4*30%** **3*55%** **2*15%** **1*0%**

Choose to study at The University of Manchester and you will be joining one of the most innovative and successful Schools of Computer Science in the world. Manchester saw the birth of computer science, with the creation of the world's first stored program computer in 1948, and has contributed over the years to some of the discipline's most exciting and important innovations.

We continue to work on pioneering research, including cutting-edge image processing software, new technologies to exploit the power of the web, medical imaging software, low power chip design, new 'brain-like' computer architectures, and much more. Such world-class activities inform the content of our postgraduate programmes, enabling you to work with leading-edge technologies and research staff of international renown.

Today, we are rated amongst the top UK departments for the quality of our research. When both the quality and size of our research contributions are taken into account, Computer Science at Manchester ranks second in the UK and first in England.

Manchester is also renowned for our innovative approach to MSc teaching. Our size and research strength enable us to offer a

combination of breadth, depth and flexibility that is difficult to find elsewhere. You are free to shape your own course by choosing from a wide spectrum of computer science and interdisciplinary topics.

The value of a Manchester Computer Science postgraduate degree is further reinforced through our ties with other disciplines, reflected in the breadth and interdisciplinary nature of many of the themes and pathways available on our programmes.

Find out more

www.manchester.ac.uk/cs
pg-compsci@manchester.ac.uk
tel +44 (0)161 275 6181
fax +44 (0)161 275 6204

Research programmes

Computer Science PhD

FT PT

Computer Science MPhil

FT PT

Computer Science MEnt

FT

Research projects are available in the following areas:

- Advanced Interfaces and Computer Graphics
- Advanced Processor Technologies
- Bio-Health Informatics
- Computer Vision
- Embedded and Hybrid Systems
- Formal Methods
- Information Management
- Machine Learning and Optimisation
- Nano Engineering and Storage Technology
- Software Engineering
- Text Mining

A list of research projects and funding opportunities is available online:

www.manchester.ac.uk/cs/phd/researchprojects

Doctoral Training Centre programmes*

Nanoscience

FT

Nuclear EngD

FT

*For further details, see Manchester Doctoral College on pages 96-99

Taught courses

Advanced Computer Science (ACS) MSc

FT PT

You can opt to follow the standard course, or to flavour your MSc by choosing a particular 'pathway'. These enable you to graduate from the long-established and highly respected ACS course, but with a specialism that reflects your interests and career aspirations. Pathways include:

- ACS: Advanced Web Technology
- ACS: Applications of NLP
- ACS: Artificial Intelligence
- ACS: Computer Security
- ACS: Computer Systems Engineering
- ACS: Data and Knowledge Management
- ACS: Digital Biology
- ACS: Multi-Core Computing
- ACS: Semantic Technologies
- ACS: Software Engineering

Advanced Computer Science and IT Management MSc**

FT PT

Computer Science Foundation Route
DL

**Offered jointly with Manchester Business School

Key
FT full-time
PT part-time
DL distance learning

Research Assessment Exercise % of research activity judged to be:

4* world leading **2*** internationally recognised
3* internationally excellent **1*** nationally recognised

In addition to our full time and part-time programme variants, a number of modular and distance learning options are offered by our Advanced Professional Education unit:

- MSc Digital Biology **DL**
- MSc Multi-Core Computing **DL**
- MSc Software Engineering **DL**

Individual course units for delivery via face-to-face or distance learning are also available.

For further information, see:

www.manchester.ac.uk/cs/ape

ape@cs.man.ac.uk

tel +44 (0)161 275 0140

Earth, Atmospheric and Environmental Sciences

PROFILE

46 Teaching staff

60 Research staff

70 Taught postgraduates

64 Research postgraduates

RAE **4*20%** **3*50%** **2*25%** **1*5%**

Our School's research focuses on the processes that shape the Earth and influence our atmosphere. Research specialisations range from the formation of elements in stars, to the safe disposal of radioactive waste and humanity's effects on the Earth and its atmosphere.

Our academic staff have experience and expertise across a wide range of disciplines and the School is uniquely placed to offer a broad spectrum of research and taught postgraduate degree courses, and to provide authoritative teaching and training across the breadth of the subject.

The School's excellent Research Assessment Exercise rating for research activities (see our Profile) demonstrates that we are at the forefront of international research – and we actively promote links between our current research and our teaching courses. We also promote our science to the public, most recently through the popular television programmes 'Walking with Dinosaurs', 'Live from Dinosaur Island', and the BBC series on 'Rain, Snow and Wind'.

We have a large and very active Research School, with substantial support from the Government and industry. Research activity centres on the following seven major research groups:

- Atmospheric Sciences
- Basin Studies and Petroleum Geoscience
- Environmental Geochemistry and Geomicrobiology
- Isotope Geochemistry and Cosmochemistry
- Palaeontology
- Physics and Chemistry of Minerals and Fluids
- Structural and Petrological Geoscience

Our superb equipment base supports research and teaching, together with associated sample preparation and workshop facilities. Fieldwork related to both Earth and Atmospheric Sciences takes place at a huge variety of locations around the world. In addition to our wealth of laboratory facilities, we also maintain hilltop stations in the Southern Pennines and run a Cessna light aircraft (unique among UK university groups).

Increasing environmental awareness, climate change concerns and a buoyant oil

industry provide a wealth of opportunities for our graduates. Our alumni can be found worldwide in environmental consultancies, in oil and power generation companies, and in research positions, both industrial and academic.

Find out more

www.manchester.ac.uk/seaes

pg-earthsci@manchester.ac.uk

tel +44 (0)161 275 0776

fax +44 (0)161 306 9361

You can apply online to all of the following:

Research programmes

Atmospheric Sciences

PhD/MPhil/MSc by Research

FT PT

Basin Studies and Petroleum

Geoscience PhD/MPhil/MSc by

Research

FT PT

Earth, Atmospheric and

Environmental Sciences

PhD/MPhil/MEnt/MSc by

Research/EntD

FT PT

Environmental Geochemistry and

Geomicrobiology PhD/MPhil/MSc

by Research

FT PT

Isotope Geochemistry and

Cosmochemistry PhD/MPhil/MSc by

Research

FT PT

Palaeontology PhD/MPhil/MSc by

Research

FT PT

Physics and Chemistry of Minerals

and Fluids PhD/MPhil/MSc by

Research

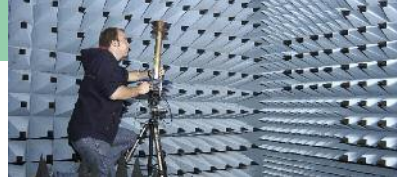
FT PT

Structural and Petrological

Geoscience PhD/MPhil/MSc by

Research

FT PT



Doctoral Training Centre programme*

Nuclear FIRST

FT

* For further details, see Manchester Doctoral College on pages 96-99

Taught courses

Master of Environmental Sciences, Policy and Management (MESPOM)

FT

Petroleum Geoscience for Exploration MSc

FT

Petroleum Geoscience for Reservoir Development and Production

FT

Pollution and Environmental Control MSc

FT PT

Electrical and Electronic Engineering

PROFILE

Research income:

Over £8m per year (average)

Research themes: While involved in all areas of research in the subject, we have particular interests in Energy and Agri-Electronics
Outstanding experimental facilities

Around 15% of our taught postgraduates stay with us to study for a research degree

RAE 4*25% 3*45% 2*30% 1*0%

The School of Electrical and Electronic Engineering is one of the largest schools of this discipline in the UK. We have a postgraduate population of more than 350 students, with approximately 190 of these studying for research degrees.

More than 50 members of research-active academic staff are distributed between six research groups, which cover the broad spectrum of activities involved in the subject of electrical and electronic engineering:

- Control Systems
- Electrical Energy and Power Systems
- Microelectronics and Nanostructures
- Microwave and Communication Systems
- Power Conversion
- Sensing, Imaging and Signal Processing

Our excellence in research was highlighted by the 2008 Research Assessment Exercise, which ranked us second in the UK in terms of "research quality".

This is further confirmed by our collaborations with companies such as Rolls-Royce, BP, National Grid, Syngenta, Oxford Instruments, EDF, National Instruments, Agilent, BT, HMGCC, Nexia and the European Space Agency.

The aim of our research is always to advance fundamental knowledge and applications across a wide spectrum by working with industry, national facilities and University groups, or by pursuing commercial exploitation.

The great breadth and depth of the research interests of our academic staff ensures a high standard of lectures and provides excellent opportunities for challenging and stimulating research projects.

We offer a number of high quality, specialist taught MSc courses, which attract a large number of outstanding students each year. Graduates from our School are highly sought after by employers.

Find out more

www.manchester.ac.uk/eee

Research programmes

pgr-eee@manchester.ac.uk

tel +44 (0)161 306 4800

fax +44 (0)161 306 4644

Taught courses

pgt-eee@manchester.ac.uk

tel +44(0)161 306 4701

fax +44 (0)161 306 4644

Research programmes

When applying online, enter one of the following programme titles in the Programme Description field:

Electrical and Electronic Engineering PhD/MPhil/Split-site PhD/ Collaborative PhD/MSc by Research

FT PT

Electrical and Electronic Engineering EntD

FT

Electrical and Electronic Engineering MEnt

FT PT

Electrical and Electronic Engineering EngD*

FT

*For further details, see the EngD section on page 14

In the Proposed Research section within the online application form, enter one of the following in the Research Title field:

- Control Systems (CS)
- Electrical Energy and Power Systems (EEPS)
- Microelectronics and Nanostructures (M&N)
- Microwave and Communication Systems (MACS)
- Power Conversion (PC)
- Sensing, Imaging and Signal Processing (SISP)

If you are unsure of the appropriate research programme/group, please

Key
FT full-time
PT part-time
DL distance learning

Research Assessment Exercise % of research activity judged to be:

4* world leading **2*** internationally recognised
3* internationally excellent **1*** nationally recognised

indicate the area of research that you are interested in and we will circulate your application to the appropriate staff.

Doctoral Training Centre programmes**

Engineering for Manufacture EngD
FT

Nanoscience
FT

*** For further details, see Manchester Doctoral College on pages 96-99*

Taught courses

You can apply online to the following:

Advanced Control and Systems Engineering MSc

FT
 Communication Engineering MSc
FT

Digital Image and Signal Processing MSc

FT PT

Electrical Energy Conversion Systems MSc

FT PT

Electrical Power Systems Engineering MSc

FT PT

Nanoelectronics MSc
FT

encompass a unique and exceptional breadth of research and training in materials engineering, science and technology – biomaterials, ceramics, nanostructured materials, polymers, technical textiles, ceramics and glasses, corrosion and protection, metallic materials and composites – and in cutting-edge textile design, fashion, retailing and management. These activities are built on our global reputation for excellence and our award-winning research.

We are supported by leading research councils and organisations worldwide, many of which have funded: specialist research centres (the Materials Performance Centre and the Northwest Composites Centre); an EPSRC Programme Grant, LATEST 2 (Light Alloys Towards Environmentally Sustainable Transport Second Generation); and the Centre for Doctoral Training in Advanced Metallic Systems.

Industry drives the development of our programmes, ensuring a sought-after qualification with transferable skills to prepare you for your chosen career. Our alumni enjoy challenging careers in industry and academia, and many are invited to work alongside the School in our strategic development, ensuring that we retain our international standing as a centre of excellence and innovation in the materials sector.

At an exciting time in the materials world, with our graduates in high demand and an unrivalled range of postgraduate programmes, the opportunities for you are endless.

Find out more

www.manchester.ac.uk/materials
pg-materials@manchester.ac.uk
 tel +44 (0)161 306 5777
 fax +44 (0)161 306 4865

Research programmes

Advanced Aerospace Materials Engineering MSc by Research

FT PT

Biomedical Materials PhD/MPhil/MSc by Research

FT PT

Ceramics and Glasses PhD/MPhil/MSc by Research

FT PT

Composite Materials PhD/MPhil/MSc by Research

FT PT

Corrosion and Protection PhD/MPhil/MSc by Research

FT PT

Fashion Technology MSc by Research

FT PT

Materials EngD*/EntD
FT

Materials MEnt/PhD/MPhil/MSc by Research

FT PT

Metallic Materials PhD/MPhil/MSc by Research

FT PT

Nanostructured Materials PhD/MPhil/MSc by Research

FT PT

Paper Science PhD/MPhil/MSc by Research

FT PT

Polymer Science and Engineering PhD/MPhil/MSc by Research

FT PT

Technical Textiles MSc by Research

FT PT

Textile Design, Fashion and Management PhD/MPhil/MSc by Research

FT PT

Textile Science and Technology PhD/MPhil/MSc by Research

FT PT

Textiles and Fashion MEnt
FT

**For further details, see the EngD section on page 14*

Materials

PROFILE

65 Teaching staff

75 Research staff

100 Taught postgraduates

200 Research postgraduates

RAE **4*20%** **3*60%** **2*15%** **1*5%**

Materials are at the heart of the modern world and we are at the forefront of developing the science behind them. At our School, we



Doctoral Training Centre programmes**

Advanced Metallic Systems

FT

Engineering for Manufacture EngD

FT

Nanoscience

FT

Nuclear Engineering

FT

Nuclear FIRST

FT

** For further details, see

Manchester Doctoral College on pages 96-99

Taught courses

Advanced Engineering Materials
MSc/PgDip/PgCert

FT PT DL

Corrosion Control Engineering
MSc/PgDip/PgCert

FT PT DL

International Fashion Retailing MSc

FT

International Fashion Retailing
(Business Process Improvement) MSc

FT

International Fashion Retailing
(Multichannel Management) MSc

FT

Polymer Materials Science and
Engineering MSc/PgDip/PgCert***

FT PT DL

Textile Technology MSc/PgDip/PgCert

FT PT DL

Textile Technology
(Digital Print Technology) MSc

FT PT

Textile Technology
(Technical Textiles) MSc

FT PT

***Offered jointly with
the School of Chemistry

Mathematics

PROFILE

70 Teaching staff

16 Research staff

50 Taught postgraduates

85 Research postgraduates

£40 million investment in the
new Mathematics building

Applied Mathematics

RAE **4*25%** **3*35%** **2*40%** **1*0%**

Pure Mathematics

RAE **4*20%** **3*40%** **2*35%** **1*5%**

Statistics and Operational
Research

RAE **4*20%** **3*35%** **2*30%** **1*15%**

The School of Mathematics is a major international research centre that covers the entire breadth of the subject, including pure and applied mathematics, probability and statistics. We have a long and distinguished history in both teaching and research, and our graduates are influential in many spheres of activity worldwide. We are proud of our lively and diverse postgraduate research community and aim to attract the very best mathematicians to Manchester from all over the world.

The School was ranked sixth highest in the country in the 2008 Research Assessment Exercise, based on the "research power" ratings of the three disciplines: Pure Mathematics, Applied Mathematics, and Statistics and Operational Research (see Profile above).

Our staff receive many accolades: in particular, we currently have three Fellows of the Royal Society, one Fellow of the British Academy and one Member of the Russian Academy of Sciences on our academic staff. Many celebrated mathematicians, including Osborne Reynolds, James Lighthill, Louis Mordell, Alan Turing, Kurt Mahler and Paul Erdős, have worked here.

Through the Manchester Institute for Mathematical Sciences, we host an extensive programme of research seminars from a wide range of speakers, providing ample opportunity for furthering knowledge and discussing current research from all areas of mathematics.

The School disburses almost a million pounds per annum towards the funding of postgraduate students, including nearly half a million pounds of EPSRC funding, and substantial funding from other institutions, including the European Commission.

Mathematics is located in a brand new, purpose-built and centrally located building, which provides an excellent environment for our world-class research and teaching.

Find out more

www.manchester.ac.uk/maths

www.manchester.ac.uk/math/postgraduate/pgadmission

pg-maths@manchester.ac.uk
tel +44 (0)161 275 5802/0176
fax +44 (0)161 306 3669

You can apply online to all of the following:

Research programmes

Actuarial Science PhD/MPhil

FT PT

Applied Mathematics PhD/MPhil

FT PT

Applied Mathematics MSc by
Research

FT PT

Applied Numerical Computing
PhD/MPhil

FT PT

Financial Mathematics PhD/MPhil

FT PT

Mathematical Logic PhD/MPhil

FT PT

Mathematics EngD*

FT

Key
FT full-time
PT part-time
DL distance learning

Research Assessment Exercise % of research activity judged to be:

4* world leading **2*** internationally recognised
3* internationally excellent **1*** nationally recognised

Mathematics EntD
FT

Mathematics MEnt

FT PT

Probability PhD/MPhil

FT PT

Pure Mathematics PhD/MPhil

FT PT

Statistics PhD/MPhil

FT PT

Statistics MSc by Research

FT PT

**For further details, please see the EngD section on page 14*

Taught courses

Actuarial Science MSc*

FT PT

Biostatistics MSc**

FT PT

Mathematical Finance MSc***

FT

Mathematical Logic and the Theory of Computation MSc

FT PT

Mathematical Logic and the Theory of Computation PgDip

FT

Pure Mathematics MSc

FT PT

Pure Mathematics PgDip

FT

Quantitative Finance and Financial Engineering MSc***

FT

Statistics MSc

FT PT

Statistics PgDip

FT

Theoretical and Applied Fluid Dynamics° MSc/PgDip

FT

**Subject to approval*

*** Offered jointly with the School of Community Based Medicine*

****Offered jointly with Manchester Business School*

° Offered jointly with Mechanical, Aerospace and Civil Engineering

Mechanical, Aerospace and Civil Engineering

PROFILE

73 Teaching staff

52 Research staff

370 Taught postgraduates

256 Research postgraduates

RAE **4*20%** **3*50%** **2*30%** **1*0%**

The School of Mechanical, Aerospace and Civil Engineering is one of Europe's leading schools of engineering. Our diverse and truly international community creates a stimulating and challenging learning environment that produces world-class professionals and achieves outstanding standards in research. Over 70% of research activity in our School is ranked as "internationally excellent" or "world-class". We are ranked third in the UK in terms of "research power" and our combined record of excellence is among the strongest in the country.

The first Engineering degree of its kind was offered in Manchester and we can lay claim to some of the most significant discoveries in the field. Perhaps the most famous is the Reynolds Number, named after the father of fluid mechanics and Manchester's first Professor of Engineering, Osborne Reynolds.

We provide internationally leading postgraduate research programmes. The range of research topics open to you covers all areas of engineering and includes theoretical and computational research, experimental studies, systems, design and management. The areas of research activity are defined by the Expert Groups in the School and include:

- Advanced Flow Diagnostics and Instrumentation
- Bioengineering
- Built Environment
- Coastal Processes
- Computational Fluid Dynamics
- Construction Science
- Dynamics and Aeroelasticity
- Energy and Multiphysics
- Experimental Aerodynamics
- Geo-Engineering
- Impact and Explosion
- Laser Processing
- Management of Projects
- Marine Energy
- Nuclear Graphite
- Reliability, Availability, Maintenance and Safety
- Smoothed Particle Hydrodynamics
- Structures and Fire
- Turbulence Mechanics

Our taught courses are designed to support both research activities and industrial needs. We are carrying out a review that will generate a portfolio of courses reflecting the strengths of the academic interest groups within the School:

- Advanced Manufacturing Technology and Maintenance Engineering
- Fluids Engineering
- Management and the Built Environment
- Structural and Mechanical Engineering Design

Find out more

www.manchester.ac.uk/mace

pg-mace@manchester.ac.uk
 tel +44 (0)161 306 9219
 fax +44 (0)161 306 4646



Research programmes

Aerospace Engineering PhD/MPhil

FT PT

Aerospace Engineering MSc by Research

FT

Civil Engineering PhD/MPhil

FT PT

Civil Engineering MSc by Research

FT

Environmental Engineering PhD/MPhil

FT PT

Management of Projects PhD/MPhil

FT PT

Management of Projects MSc by Research

FT

Mechanical, Aerospace and Civil Engineering EngD*

FT

Mechanical Engineering PhD/MPhil

FT PT

Mechanical Engineering MSc by Research

FT

Nuclear Engineering EngD*

FT

Nuclear Engineering PhD/MPhil

FT PT

**For further details, see the EngD section on page 14*

Doctoral Training Centre programmes**

Engineering for Manufacture EngD

FT

Nuclear Engineering

FT

Nuclear FIRST

FT

*** For further details, see Manchester Doctoral College on pages 96-99*

Taught courses

Advanced Manufacturing Technology and Systems Management MSc

FT

Aerospace Engineering MSc

FT

Maintenance Engineering and Asset Management MSc/PgDip/PgCert

FT PT DL

Management of Projects MSc

FT PT

Management of Projects: Commercial Project Management MSc

FT PT

Management of Projects: Construction Project Management MSc

FT PT

Management of Projects: Engineering Project Management MSc

FT PT

Management of Projects: IT Project Management MSc

FT PT

Mechanical Engineering Design MSc

FT

Pharmaceutical Engineering Advanced Training MSc/PgDip/Modular

DL

Structural Engineering MSc

FT

Theoretical and Applied Fluid Dynamics MSc/PgDip***

FT

Thermal Power and Fluid Engineering MSc

FT

****Offered jointly with Mathematics*

For details of the full portfolio of taught masters courses offered by the School:

www.manchester.ac.uk/mace

tel +44 (0)161 306 9219

Physics and Astronomy

PROFILE

74 Teaching staff

75 Research staff

13 Taught postgraduates

159 Research postgraduates

RAE 4*20% 3*35% 2*30% 1*15%

The School of Physics and Astronomy at Manchester is one of the largest and most active schools of physics in the UK. We have a long tradition of excellence in both teaching and research, with interests in most areas of contemporary research.

In the most recent Research Assessment Exercise (2008), 85% of our School's research was rated as being of international quality, with 20% considered "world-leading". The volume of world-leading and internationally excellent research places our School fifth in the UK.

We have a strong presence in a number of Manchester-based centres for multidisciplinary research: the Manchester Science and Enterprise Centre, the Photon Science Institute, the Manchester Centre for Non-Linear Dynamics, the Dalton Nuclear Institute, and the Mesoscience and Nanotechnology Centre. In addition, the Jodrell Bank Observatory in Cheshire is part of our School.

Strong research activity exists in a broad range of physics topics, funded by the Research Councils, including EPSRC, STFC, BBSRC, the EU and industry.

All our research groups offer well-equipped laboratories and computing facilities and are

Key
FT full-time
PT part-time
DL distance learning

Research Assessment Exercise % of research activity judged to be:

4* world leading **2*** internationally recognised
3* internationally excellent **1*** nationally recognised

involved in a wide range of collaborative projects with industry and other academic departments, in the UK and overseas.

A physics research degree is regarded by employers as evidence of thorough training in numerate problem-solving, and opens up a wide range of career choices. In addition to a university or research laboratory career, PhD physicists are found across the full spectrum of employment, including the media, editorial work, finance and banking, and medicine.

Find out more

www.manchester.ac.uk/physics

pg-physics@manchester.ac.uk
 tel +44 (0)161 306 3673
 fax +44 (0)161 275 4297

Research programmes

When applying online, enter one of the following in the Programme Description field:

Astronomy and Astrophysics EntD
FT

Astronomy and Astrophysics
 PhD/MSc by Research/MEnt

FT PT

Physics PhD/MSc by Research/MEnt

FT PT

Physics EntD/EngD*

FT

**For further details, see the EngD section on page 14*

- Particle Physics
- Photon Physics
- Theoretical Physics

Doctoral Training Centre programmes**

Engineering for Manufacture EngD

FT

Nanoscience

FT

Nuclear Engineering

FT

Nuclear FiRST

FT

*** For further details, see Manchester Doctoral College on pages 96-99*

Taught courses

Nuclear Science and Technology

MSc/PgDip/Pg Cert***

FT PT DL

Photon Science MSc

FT

Radio to sub-mm-wave Imaging and Sensing MSc

FT

****For more information about this course, email info@ntec.ac.uk or tel +44 (0)161 275 4575, or visit www.ntec.ac.uk*

In the Proposed Research section within the online application form, enter one of the following in the Research Title field:

- Astronomy and Astrophysics
- Biological Physics
- Condensed Matter Physics
- Nonlinear and Liquid Crystals Physics
- Nuclear Physics



faculty of humanities



Our research

Our Faculty of Humanities encompasses academic areas as diverse as Arts, Education, Development, Law, Social Sciences, and Business and Management, and is committed to developing new and innovative ways to transfer knowledge out of the University and apply this to 'real world' problems.

The last Research Assessment Exercise (2008) cemented our global reputation for outstanding Humanities research. The Faculty was behind only Oxford and Cambridge in the number of world-leading staff returned.

Of our research activity, 22% was classed "world leading" and a further 40% "internationally excellent".

The Faculty hosts many institutes and centres that provide interdisciplinary research programmes in areas from sustainable consumption to world poverty. See Manchester Doctoral College (pages 96-99) and the page opposite for examples.

We look forward to welcoming and developing your own talents, motivation and ideas as a postgraduate student in the Faculty of Humanities.

www.manchester.ac.uk/humanities

Centres of excellence

Institute for Social Change

- Examines causes and consequences of social change
- Directed by Robert Putnam, Professor of Public Policy at Harvard, and Visiting Professor at Manchester

Institute for Science, Ethics and Innovation

- Investigates ethical questions raised by 21st-century science and technology
- Chaired by Nobel Prize winner and genomic research pioneer Professor John Sulston, working with world-renowned authority on bioethics Professor John Harris

Brooks World Poverty Institute

- Conducts multidisciplinary research on poverty reduction, inequality and growth
- Chaired by Nobel Prize winner and former World Bank Chief Economist Professor Joseph Stiglitz; its Executive Director is Professor David Hulme
- Aims to become the leading European research centre in this field

Global Urban Research Centre

- Launched in 2008, focusing on global urbanisation, poverty, inequality and exclusion

Chronic Poverty Research Centre

- International partnership of universities, research institutes and NGOs, based at our Institute for Development Policy and Management
- Informs the work of all who seek to combat poverty, such as NGOs, political parties, researchers and trade unions

Manchester Institute for Innovation Research

- Our largest and longest-standing research institute, known worldwide for influential publications
- Teaches and researches in technology strategy, science and innovation policy, foresight and sustainability
- Has greatly influenced the direction of European and national research, innovation policies and management practice

Eco Cities

- Aims to create an integrated climate change adaptation strategy for urban areas, based on scientific research, stakeholder engagement and 'best practice' examples
- Involves the Manchester Architecture Research Centre, Centre for Urban Regional Ecology and Brooks World Poverty Institute, directed by Professor Simon Guy
- Funded by Bruntwood

Centre for Equity in Education

- Involves practitioners, policy-makers and researchers in collaborative development and research projects that focus on the challenges facing the education service, particularly in educating vulnerable groups

Centre for Chinese Studies

- Informs degrees designed to understand and engage with the emergence of China as a world power
- Supported by the Manchester Confucius Institute, one of the world's first Confucius Institutes, partnered with Beijing Normal University

Institute for Political and Economic Governance

- Multidisciplinary research by IPEG has made its presence felt in national debates around the reform of social, civil and economic infrastructures
- Directed by Professor Alan Harding

See also:

Humanitarianism and Conflict Response Institute (page 98)

Sustainable Consumption Institute (page 99)

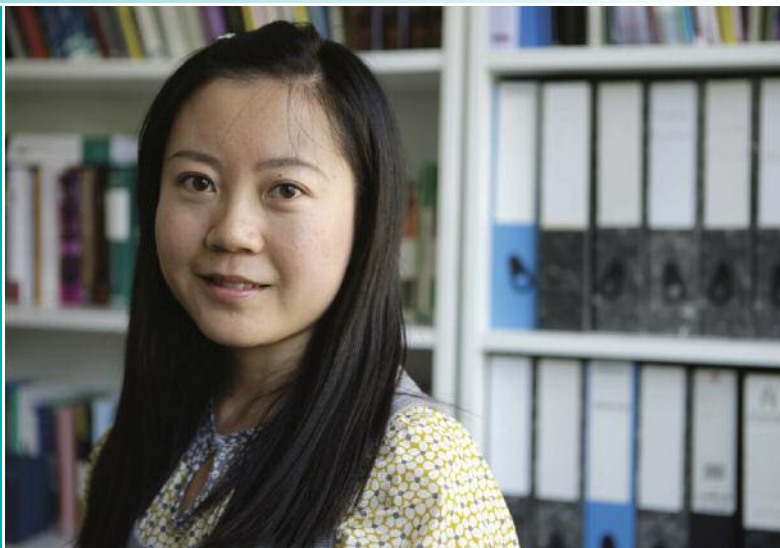
Centre for New Writing (Creative Writing and Contemporary Literature page 62).

Humanities stats

100+ research centres and groups
 990+ academic staff
 £17.5m+ predicted research income

student profile

Name Yonghui Ma
Age 28
From Beijing, China
Degree PhD Bioethics
Graduates 2012



Why did you choose your degree at Manchester?

"Obtaining a PhD degree on a subject I am fascinated with has been a long-cherished dream since I was very young. As one of the 'red brick' universities, Manchester has a prestigious reputation in China and its international ranking among world universities has been rising remarkably in recent years.

"More importantly, the Institute for Science, Ethics and Innovation (ISEI) specialises in ethical issues and is a leading team in the UK and even in Europe. Therefore, I was eager to be involved in this cutting-edge research group.

"I was awarded a full scholarship by the School of Law and ISEI, to whom I am very grateful. Finally, Manchester city is modern and traditional, diversified and harmonious, which also appealed."

What do you think of your course?

"Apart from the skills training courses, the intensive and stimulating seminar series run by the Law School and ISEI have been one of the most interesting and beneficial highlights of my study. The informal but heated discussions not only give me the opportunity to improve my English and boost my confidence, but also inspire me to develop critical thinking. It is a wonderful, liberating feeling!

"The Faculty has a great academic atmosphere, reflected by its comprehensive range of resources and equipment, including books, journals, audio-visual materials and access to computers. The learning and research experience is really enjoyable. Staff here are very friendly, efficient and supportive, while academics are excellent experts in a wide range of fields.

How has studying here helped your prospects?

"I think obtaining a PhD in a distinguished English-speaking university will enhance the value of my degree and the chance of employment in academia, and hence could help me actualise my commitment to contributing to the development of bioethics in China.

"Secondly, my experience in this School has made me gain a deeper understanding of myself, and of community. It has helped me to develop my social skills, broaden my vision and enrich my life. I have learned to appreciate different cultures, societies and thoughts. I believe these are and will be valuable assets throughout my life."

What do you most value about studying here?

"Studying here is much more than just qualifications. I would say studying here helps me to see myself through new eyes. The culture differences I experience here always challenge me to reconsider my beliefs and values."

researcher profile

Name Professor
Mona Baker

Job title Professor of
Translation Studies

School Languages,
Linguistics
and Cultures



What are your specialist areas of interest?

"I am interested in almost everything to do with translation and interpreting, but particularly in the politics and ethics of translation, and more specifically the role played by translators and interpreters in mediating global conflicts."

What are you currently working on?

"I have just finished writing two lengthy journal articles as part of a long-term research project on translation, conflict and narrative. More attention to this area can sharpen our critical faculties and improve the quality and ethical outcomes of this type of mediation, in the interest of justice and of genuine, long-term security."

"For example, my second article focuses on two areas. First, how translators and interpreters are narrated by other participants in the war zone (eg the military, local populations) and how they might come to identify with the role that other parties assign to them in that narrative. Second, how translators and interpreters participate in elaborating the range of public narratives of the conflict that become available to us, and, in so doing, influence the course of the war in ways that are subtle, often invisible, but extremely significant."

Why is Manchester good for your research??

"Manchester has several research groups working on similar themes from different disciplinary bases.

Our library holdings, especially of electronic journals and databases, are extensive and highly accessible."

How does your research benefit postgraduates?

"Our postgraduate students are increasingly interested in geopolitical issues. I open up relevant research avenues for them and initiate debates on different aspects of the issues that interest them, not only through my lectures, but also through my published research."

"For doctoral students in particular, publications by researchers like myself provide at least preliminary theoretical lenses that enable them to make sense of their data."

"Conversely, Manchester attracts very high quality research students, so the ability to supervise high calibre doctoral students and to learn from their research is for me one of the most exciting aspects of working in Manchester."

What makes the Faculty of Humanities a great place for postgraduate study?

"The diversity of staff interests and expertise; exciting research projects that focus on highly consequential themes of immediate relevance to society; the vibrant research culture maintained through a combination of leading researchers and high calibre postgraduate students; and first-class library facilities."



Archaeology

PROFILE

9.5 Academic staff
3 Research staff
20 Taught postgraduates
25 Research postgraduates
RAE **4*15%** **3*45%** **2*30%** **1*10%**

Archaeology has a long history here, beginning with William Boyd Dawkins, curator of the Manchester Museum from 1869, who contributed much to the development of Palaeolithic archaeology.

Today, we are an internationally recognised centre for social and interpretive archaeology. Research and teaching are supported by the rich resources of the John Rylands Library, the Manchester Museum and the Greater Manchester Archaeological Unit, and staff from the Museum, Archaeological Unit and Whitworth Art Gallery are involved in delivering our courses.

Various focal themes include: identity (personhood, gender, ethnicity, religion and sexual politics); place, landscape and monumentality; history, theory and philosophy of archaeology; technology, material culture and social practice; social complexity and the development of state-organised societies; and social significance of the past.

Postgraduate programmes are integral to our research culture. Staff research ranges from the later Palaeolithic in Europe, to the present day; with strong foundations in European and Near Eastern prehistory, it also takes in parts of Africa, Asia, Australia and South America.

We emphasise the integration of theory and practice and are involved in a range of exciting research projects, such as: the Stonehenge Riverside Project, Star Carr excavations, Callanish excavations, Alderley Edge Mines Project and Hilton of Cadboll Community Archaeology Project (all UK-based); Domuztepe excavations (Turkey); Easter Island and Tongo Hills and Koma Land (Ghana); and various projects in Bahrain, Australia, Greece and Peru.

Find out more

www.manchester.ac.uk/archaeology

SAHCpg@manchester.ac.uk
tel +44 (0)161 306 1259 /
+44 (0)161 275 3144
fax +44 (0)161 275 3098

Research programmes

Archaeology PhD
FT PT

Taught courses

Archaeology – Complex Societies
MA

FT PT

Archaeology – General MA

FT PT

Archaeology – Identity MA

FT PT

Archaeology – Neolithic MA

FT PT

Architecture

PROFILE

20 Academic staff
6 Research postgraduates
Joint School with Manchester
Metropolitan University
History of Art, Architecture
and Design
RAE **4*40%** **3*40%** **2*15%** **1*5%**

In 1996, the Manchester School of Architecture was established through an innovative collaboration between The University of Manchester and Manchester Metropolitan University. Our students therefore uniquely benefit from the broad range of interests and expertise of our academic staff, and can use the extensive resources and facilities of both institutions.

PhD research revolves around the Manchester Architecture Research Centre, where research focuses on the co-evolution of design and development strategies and the socio-economic processes shaping architecture and cities. We aim to develop and apply interdisciplinary approaches to architecture and urban development, and engage with contemporary practice in a global context.

Our interdisciplinary PhD programme is open to students interested in any aspect of architectural research, including sustainable urbanism, urban design and development, ecological and landscape design, and the conservation and management of historic environments. We also encourage proposals for research by design.

We also offer a masters course in Architecture and Urbanism, designed to provide architects,

Key
FT full-time
PT part-time
DL distance learning

Research Assessment Exercise % of research activity judged to be:

4* world leading **2*** internationally recognised
3* internationally excellent **1*** nationally recognised

urban designers, planners and urbanists with the intellectual, theoretical and practical knowledge and skills essential to understanding and shaping the future city.

Find out more

www.manchester.ac.uk/architecture

www.msa.ac.uk

sed.admissions@manchester.ac.uk
 tel +44 (0)161 275 0969
 fax +44 (0)161 275 0421

Research programmes

Architecture MPhil/PhD
FT PT

Taught courses

Architecture and Urbanism MA
FT PT

See *Planning and Landscape* p76

Art History and Visual Studies

PROFILE

10 Academic staff
 20 Taught postgraduates
 40 Research postgraduates
 History of Art, Architecture and Design
 RAE **4*40%** **3*40%** **2*15%** **1*5%**

Our postgraduate programmes draw on the expertise of academic staff covering art history from the ancient world to the present day, with a wide range of geographical specialisms. You are fully integrated into a vibrant and stimulating research culture.

You benefit from excellent collections, including: a digital image archive; a library of 350,000 slides; the outstanding holdings

of the Whitworth Art Gallery of fine and applied art from the 18th century onwards; the renowned collection of medieval illuminated books in the Rylands Library, Deansgate; the Egyptian and Classical antiquities of the Manchester Museum; and further major gallery and museum collections within the city and region.

Find out more

www.manchester.ac.uk/arthistory

pg-arthistory@manchester.ac.uk
 tel +44 (0)161 306 1259 / 0161 275 3144
 fax +44 (0)161 275 3098

Research programmes

Art History and Visual Studies PhD
FT PT

Taught courses

Art History MA
FT PT
 Constructions of the Sacred, the Holy and the Supernatural MA
FT PT

Arts Management and Cultural Policy

PROFILE

2 Academic staff
 40 Affiliated staff

The Centre for Arts Management and Cultural Policy (CAMP) was established in 2009 to provide an axis for engagement, collaboration and partnership between arts and cultural managers, sector organisations and higher education.

We work closely with our sister centres and programmes – Museology, Music, Drama, Applied

Theatre, Screen Studies and New Writing – to forge a base for teaching, research, knowledge transfer and professional development relevant to professionals working in all areas of the arts.

The MA Arts Management, Policy and Practice brings together theory and application of methods for those working in many areas of practice – including policy-making, strategic management and leadership, finance and resource development, marketing, engagement, education, research and evaluation – within cultural institutions and in community settings.

CAMP has partnerships with a wealth of arts and cultural providers, inviting their contribution through guest lectures, site visits and master-classes and placing postgraduate students at the heart of the dynamic North West sector through placements and practice-based research in world class venues and institutions, across the creative and cultural industries.

The Centre is developing a Professional Doctoral programme in Arts and Cultural Management, to begin in October 2010 (subject to approval), in addition to the existing PhD in Arts Management and Cultural Policy.

Find out more

www.manchester.ac.uk/artsmanagement

SAHCPg@manchester.ac.uk
 tel +44 (0)161 306 1259 /
 +44 (0)161 275 3144
 fax +44 (0)161 275 3098



Research programmes

PhD Arts Management and Cultural Policy

FT PT

Professional Doctorate in Arts and Cultural Management*

FT PT

Taught courses

Arts Management, Policy and Practice MA

FT PT

*Subject to approval

Classics and Ancient History

PROFILE

13 Academic staff

3 Postdoctoral fellows

12-25 Taught postgraduates

15-20 Research postgraduates

Strong links with the British Schools at Rome and Athens

Annual Postgraduate

Conference; Annual

International Research Conference

RAE 4*25% 3*30% 2*35% 1*10%

One of the largest and liveliest centres for the study of the classical world in the UK, we are equally strong on both the Greek and Roman sides, in history, literature and language alike. In addition to comprehensive coverage of central and canonical subjects, we have expertise in a number of more rare, specialist fields, including epigraphy, ancient medicine and linguistics.

Building on a long and distinguished history at the University, we have recently seen rapid growth in postgraduate numbers, backed by strong investment from the University.

We pride ourselves especially on: our large and vigorous international community of students; our research fellows and permanent staff; our inclusiveness; our weekly departmental lunch; our lively and sociable research seminar; the high quality and exceptional delivery of our postgraduate programmes; our special emphasis on the development by our postgraduates of appropriate language skills, both ancient (for controlling the sources) and modern (for reading modern scholarship); and on the classical collections of the John Rylands University Library, together with its Special Collections, a scholar's treasure trove with considerable exploitable potential.

Find out more

www.manchester.ac.uk/classics

SAHCpg@manchester.ac.uk

tel +44 (0)161 306 1259 / 0161

275 3144

fax +44 (0)161 275 3098

Research programmes

Classics and Ancient History PhD

FT PT

Taught courses

Classics and Ancient History MA

FT PT

Creative Writing and Contemporary Literature

PROFILE

7 Academic staff

46 Taught postgraduates

15 Research postgraduates

English Language and Literature

RAE 4*30% 3*45% 2*25% 1*0%

Home to the MA and PhD in Creative Writing, and the MA in Contemporary Literature and Culture, our Centre for New Writing is a place where writers and critics of contemporary literature and culture can meet and exchange ideas and opinions, founded on the simple but important principle that good writing and good reading go together.

Our students enjoy opportunities including: fortnightly master classes with Martin Amis; workshops in fiction and poetry writing led by published, award-winning writers; intensive, one-to-one instruction from writer-in-residence; free entry to 'Literature Live', a fortnightly reading series bringing the best contemporary novelists and poets to Manchester; a range of seminars focusing on the literature and culture of the last 25 years; and internships at literary organisations, including Carcanet, The Poetry School, the Manchester Literature Festival and others. The Centre is also home to our online journal: The Manchester Review.

Distinguished teaching staff include novelists Martin Amis, MJ Hyland, Geoff Ryman and Ian McGuire, poets John McAuliffe and Vona Groarke, and literary and cultural critic Kaye Mitchell.

Key
FT full-time
PT part-time
DL distance learning

Research Assessment Exercise % of research activity judged to be:

4* world leading **2*** internationally recognised
3* internationally excellent **1*** nationally recognised

Find out more

www.manchester.ac.uk/arts/newwriting

pg.english@manchester.ac.uk
 tel +44 (0)161 306 1259 /
 +44 (0)161 275 3144
 fax +44 (0)161 275 3098

Research programmes

Creative Writing PhD
FT PT

Taught courses

Contemporary Literature and
 Culture MA

FT PT
 Creative Writing MA
FT PT

Criminology and Criminal Justice

PROFILE

70 Academic staff
 250 Taught postgraduates
 70 Distance learning
 postgraduates
 80 Research postgraduates
 Incorporating The School of Law

The Centre for Criminology and Criminal Justice Studies brings the field of criminology into the School of Law. Manchester's Law School is one of the oldest and most prestigious in the country and has a major international reputation for research and teaching in socio-legal studies.

More than 30 staff use a range of social science methods in studying crime, the justice system and law more widely. Members bring the insights and methods of criminology, sociology, anthropology, psychology and economics to a diverse range of problems and policy issues.

The breadth of social science perspectives is one of our major strengths.

Criminology is an ESRC-recognised outlet for PhD training. Our staff members are international experts in their field and hold a number of prestigious grants and awards. Students pursuing advanced degrees in the Centre join a lively interdisciplinary group of scholars and an active postgraduate student community.

Find out more

www.manchester.ac.uk/law

pg-criminology@manchester.ac.uk
 tel +44 (0)161 306 1279
 (research programmes)
 tel +44 (0)161 275 3561
 (taught courses)
 fax +44 (0)161 275 4724

Research programmes

Criminology MPhil/PhD
FT PT

Taught courses

Crime, Law and Society MA

FT PT
 Criminology and Socio-Legal
 Studies MRes
FT PT

See also *Law*

Drama

PROFILE

12 Academic staff
 25 Taught postgraduates
 30 Research postgraduates
 RAE **4*45%** **3*40%** **2*15%** **1*0%**

Founded in 1961 by a generous gift from Granada Television, the School of Drama has developed an international reputation for high quality research. Our disciplinary

approach combines emphasis on historical and theoretical perspectives with practical exploration and understanding.

We have some of the country's leading researchers and practitioners of drama, who publish widely and promote a lively and innovative research culture.

Our impressive new £6 million facilities include the John Thaw Studio Theatre, Cosmo Rodewald Concert Hall and Joint Electro-Acoustic Music Studios, plus professional-standard audio-visual facilities and excellent workshop and practice spaces.

All our staff are active within our three main research strands: Theatre Studies, Applied Theatre and Screen Studies.

Find out more

www.manchester.ac.uk/drama

SAHCpg@manchester.ac.uk
 tel +44 (0)161 306 1259 /
 +44 (0)161 275 3144
 fax +44 (0)161 275 3098

Research programmes

Drama PhD

FT PT
 Professional Doctorate in
 Applied Theatre
FT PT

Taught courses

Applied Theatre MA

FT PT
 Performance, Screen and Visual
 Studies MA
FT PT
 Screen Studies MA
FT PT
 Theatre Studies MA
FT PT

See also *Humanitarianism and Conflict Response*



East Asian Studies

PROFILE

15 Academic staff

3 Research staff

5 Taught postgraduates

20 Research postgraduates
(across Schools)

RAE 4*10% 3*25% 2*45% 1*20%

Introduced in 2008, East Asian Studies at Manchester incorporates both Chinese and Japanese Studies. Postgraduate research can be conducted and supervised in either area, as well as in broader topics that span Chinese and Japanese cultural spheres and examine relationships and phenomena across the region. East Asian Studies focuses primarily on the modern era, from humanities and social sciences perspectives, across a wide range of areas and topics.

Research undertaken by the Centre for Chinese Studies focuses on contemporary China, particularly since the founding of the People's Republic of China in 1949. China is also studied in the broad sense as transnational China, encompassing the whole Chinese-speaking world. Centred on the mainland, this also includes Hong Kong, Taiwan and Macau, as well as the diasporic Chinese communities in Europe, South East Asia, North America and elsewhere.

Study and research in the global context aims to understand how China and the Chinese-speaking world influences and impacts on the global community, and vice versa. Current research includes Sino-Western interactions, contemporary Chinese culture and society, identity formation and transformation, Chinese foreign

policy and security, nationalism and transnationalism, and Chinese social and business networks.

Japanese Studies was established in 2007. Staff research interests include: contemporary society; religion, new religions and violence, pilgrimage, education, socialisation and identity, social and cultural history, gender and the emergence of femininity in Japan; contemporary girls' culture; otaku and anime; the language of modern television dramas; and language pedagogy, dictionaries and translation.

Find out more

www.manchester.ac.uk/llc/subjects/east-asian

www.manchester.ac.uk/humanities/ccs

pg-japanese@manchester.ac.uk

pg-chinese@manchester.ac.uk

tel +44 (0)161 275 3559

fax +44 (0)161 275 3031

Research programmes

Chinese Studies PhD/MPhil

FT PT

East Asian Studies PhD/MPhil

FT PT

Japanese Studies PhD/MPhil

FT PT

Taught courses

Contemporary China MA

FT PT

Economics

PROFILE

46 Academic staff

100 Taught postgraduates

30-40 Research postgraduates

RAE 4*25% 3*55% 2*20% 1*0%

As confirmed by the 2008 Research Assessment Exercise (RAE), we are in the top ten of UK Economics departments, with international recognition for the quality of all our research activity. Our research excellence encompasses all the core areas of microeconomics, macroeconomics and econometrics, including development and environmental economics.

Manchester is also one of the oldest centres for the study of economics in the UK, with a Chair in Political Economy established in 1854. Since then, many famous names in economics have worked in Manchester, including three Nobel prize-winners: Sir John Hicks (1938-46), Sir Arthur Lewis (1948-58) and Professor Joseph Stiglitz (current Head of the Brooks World Poverty Institute). The first UK Chair in Econometrics, established at Manchester in the 1960s, was held by Jack Johnston who founded the first Department of Econometrics.

The discipline area of Economics is part of the School of Social Sciences. Aggregating the 2008 RAE results across the five main discipline areas of the School of Social Sciences, and comparing these with other UK universities, the School ranks third in the UK, making it one of the leading international research schools in the Social Sciences.

In recent years, Economics at Manchester has developed leading international research agendas in the following five broad areas:

Key
FT full-time
PT part-time
DL distance learning

Research Assessment Exercise % of research activity judged to be:

4* world leading **2*** internationally recognised
3* internationally excellent **1*** nationally recognised

- Microeconomics and Mathematical Economics
- Macroeconomics, Growth and Development
- Econometrics and Applied Economics
- Environmental and Resource Economics
- Development Economics and Policy

The first four are the principal research groups within Economics. The fifth area draws together interdisciplinary researchers in Economics and the Institute of Development Policy and Management, within the School of Environment and Development.

Find out more

www.manchester.ac.uk/socialsciences

pg-soss@manchester.ac.uk
 tel +44 (0)161 275 4743
 (research programmes)
 tel +44 (0)161 275 4471
 (taught courses)
 fax +44 (0)161 275 2450

Research programmes

Economics MPhil/PhD
FT PT

Taught courses

Econometrics MSc
FT PT
 Economics MA
FT PT
 Economics MSc/PgDip
FT PT
 Economics and Econometrics MSc
FT PT
 Economics (Environmental Economics) MSc
FT PT
 Financial Economics MSc
FT PT

See also Manchester Business School; Social Statistics; International Development IDPM

Education

PROFILE

65 Teaching and research staff
 1,071 Taught postgraduates
 175 Research postgraduates
 RAE **4***20% **3***35% **2***30% **1***10%

Our School of Education offers a rich diversity of opportunity in one of the UK's largest graduate educational research communities. The PhD Research Training Programme and the MSc in Educational Research are recognised by the Economic and Social Research Council (ESRC), so you are assured of access to a full range of high-quality research methods training.

Our research groups organise programmes of staff/student research seminars and you are encouraged to publish papers and attend appropriate conferences. We have sought to create a vibrant international postgraduate community that is welcoming, supportive and friendly.

Research activity within the School coalesces around three broad themes: Inclusion and Educational Diversity; Teaching, Learning and Assessment; and Education Policy, Leadership and Management. Theoretically grounded and methodologically rigorous, our research focuses on where there is a deliberate emphasis placed on the relationship between policy and practice and research activities that can impact on both.

Find out more

www.manchester.ac.uk/education

pg-education@manchester.ac.uk
 tel +44 (0)161 275 3463
 fax + 44 (0)161 275 3528

Research programmes

Counselling Psychology Doctorate
 DCouns

FT

Education MPhil/PhD

FT PT

Education Doctorate EdD
 (Leadership theme) (Urban Contexts theme) (Post-Compulsory theme)

PT

Educational and Child Psychology
 Doctorate DEdChPsy

FT

Educational Psychology Doctorate
 DEdPsy

PT

Taught courses

Counselling MA

PT

Digital Technologies,
 Communication and Education MA

FT PT DL

Education MA

FT PT

Educational Leadership and School
 Improvement MA

FT PT

Educational Research MSc

FT PT

Educational Technology and TESOL
 MA

FT PT DL

PGCE Primary

FT

PGCE Primary (with Language
 Specialism)

FT

PGCE Secondary Business
 Education

FT

PGCE Secondary Design
 Technology

FT

PGCE Secondary English

FT

PGCE Secondary Mathematics

FT

PGCE Secondary Modern Languages
 (French/German/Spanish)

FT



PGCE Secondary Science
(Biology/Chemistry/Physics)

FT

Profound and Complex Learning
Disability MSc/PgCert/PgDip

DL

Psychology of Education MEd

FT PT

Supervision of Counselling and the
Helping Professions PgCert

PT

TESOL MA

FT PT DL

English and American Studies

PROFILE

33 Academic staff

110 Taught postgraduates

44 Research postgraduates

RAE **4*30%** **3*45%** **2*25%** **1*0%**

Postgraduate study in English and American Studies is supported by a world-class library with exceptionally rich holdings in our field.

We have a strong research record and staff of recognised international standing in both traditional and emerging areas of the discipline, as evidenced by the following active research groups: American Studies, Centre for the Study of Sexuality and Culture, Medieval and Literary and Cultural Studies, Early Modern Studies, Modernism, and Postcolonial and Irish.

Our large, active postgraduate English and American studies community runs an annual conference and publishes its own journal. We offer excellent postgraduate facilities, including workroom, computer clusters and common room, plus a bursary

scheme for MA students and sponsorship for PhD students to attend conferences.

Find out more

www.manchester.ac.uk/english

pg-english@manchester.ac.uk

tel +44 (0)161 306 1259 /

0161 275 3144

fax +44 (0)161 275 3098

Research programmes

English and American Studies PhD

FT PT

Taught courses

American Studies (History) MA

FT PT

American Studies (Literature and Culture) MA

FT PT

English and American Studies MA

FT PT

Literatures and Cultures 1200-1700 MA

FT PT

Post-1900 Literatures, Theories and Cultures MA

FT PT

Postcolonial Literatures and Cultures MA

FT PT

See also *Creative Writing and Contemporary Literature*; *Gender, Sexuality and Culture*; *History*

European Languages and Cultures

PROFILE

54 Academic staff

36 Research postgraduates

17 Taught postgraduates

115 externally funded research projects since 2005; income totalling over £6 million

French

RAE **4*15%** **3*35%** **2*35%** **1*15%**

German, Dutch and

Scandinavian Languages

RAE **4*20%** **3*35%** **2*30%** **1*15%**

Iberian and Latin

American Languages

RAE **4*30%** **3*45%** **2*20%** **1*5%**

Italian

RAE **4*20%** **3*35%** **2*40%** **1*0%**

Russian, Slavonic and

East European Languages

RAE **4*35%** **3*35%** **2*25%** **1*5%**

Our School of Languages, Linguistics and Cultures offers the UK's greatest concentration of high-quality research and teaching in language-based disciplines.

We are united by common research interests: the study of languages and their application in transnational cultural studies (including literary studies, in all forms and over all historical periods from the Middle Ages onwards, visual, screen and performance studies, migration and diaspora studies, Holocaust studies, postcolonial studies, gender and sexuality studies and critical theory); historical, political and social studies; linguistics; and translation studies. Our research interests cover all historical periods from the Middle Ages onwards, as well as aspects of culture relating to history and politics.

Key
FT full-time
PT part-time
DL distance learning

Research Assessment Exercise % of research activity judged to be:

4* world leading **2*** internationally recognised
3* internationally excellent **1*** nationally recognised

The University is one of the country's pre-eminent centres for research in European languages, cultures and societies, including cultures outside Europe where those languages are spoken. Most of our academic staff produce research of international standing. Excellent facilities include a Centre for Graduate Studies with computers, printers, 'hot-desk' facilities and secure lockers.

Find out more

www.manchester.ac.uk/llc

pg-europeanlang@manchester.ac.uk
 tel +44 (0)161 275 3559
 fax +44 (0)161 275 3031

Research programmes

French Studies PhD/MPhil

FT PT

German Studies PhD/MPhil

FT PT

Italian Studies PhD/MPhil

FT PT

Polish Studies PhD/MPhil

FT PT

Portuguese Studies PhD/MPhil

FT PT

Russian Studies PhD/MPhil

FT PT

Spanish Studies PhD/MPhil

FT PT

Taught courses

A new portfolio of masters courses will be available for September 2011. To find out more, go to

www.manchester.ac.uk/llc/postgraduate

Gender, Sexuality and Culture

PROFILE

4 Full-time academic staff

50 Affiliated academic staff

This interdisciplinary subject is offered by the Centre for the Study of Sexuality and Culture within the School of Arts, Histories and Cultures.

Our taught MA is unique within the UK, as it brings together scholars offering options in diverse academic disciplines, including: English and American Studies, Art History and Visual Cultures, History, Modern Languages, Religions and Theology, History of Medicine, Sociology, Social Anthropology, Politics, and others. The University's research culture is unusually rich for the study of gender and sexuality, and many disciplines with offerings in this area were rated "world-leading" or "internationally excellent" in the 2008 RAE.

The University's John Rylands Library has one of the best collections of journals, books and archival resources focused on gender and sexuality studies in the UK. You will also have access to other university libraries through the CALIM scheme. Excellent additional research facilities and other unique data sources are also available.

Find out more

www.manchester.ac.uk/english

SAHCpg@manchester.ac.uk
 tel +44 (0)161 306 1259 /
 0161 275 3144
 fax +44 (0)161 275 3098

Research programmes

Gender, Sexuality and Culture PhD
FT PT

Taught courses

Gender, Sexuality and Culture MA
FT PT

See also Sociology



Geography

PROFILE

30 Academic staff

50 Taught postgraduates

20 Research postgraduates

RAE 4*15% 3*50% 2*30% 1*5%

Taught at Manchester for over a century, Geography today is a division of the School of Environment and Development, located in a modern, well-equipped and self-contained building.

We have been rated excellent for teaching and produce research of global excellence, with 65% of our research activity defined as "world leading" or "internationally excellent" in the 2008 RAE. Our international research expertise crosses diverse areas, such as economic geography, urban geography, political ecology, environmental change, upland hydrology, geographical information systems, geoarchaeology and water management.

Postgraduate programmes are integrated into our overall research ethos, which aims to produce both theoretically and policy-relevant contributions to geographical knowledge.

Our masters courses provide you with specialist training, laying the foundations for a successful career in terms of PhD studies, or in the worlds of consultancy or policy-making. Research students in Geography are also highly employable, and benefit from a dedicated, in-house research training programme during their degree.

Annual scholarships, both at masters and PhD level, are available from various funding bodies, including the ESRC and the ESF.

Find out more

www.manchester.ac.uk/geography

sed.admissions@manchester.ac.uk

tel +44 (0)161 275 0969

fax +44 (0)161 275 0421

Research programmes

Geography: Human Geography

MPhil/PhD

FT PT

Geography: Physical Geography

MPhil/PhD

FT PT

Taught courses

Environmental Governance MSc

FT PT

Environmental Monitoring,

Modelling and Reconstruction MSc

FT PT

Geographical Information Science

MSc

FT PT

See also *International Development (IDPM); Planning and Landscape*

History

PROFILE

36 Academic staff

65 Taught postgraduates

40 Research postgraduates

RAE 4*20% 3*40% 2*30% 1*10%

Postgraduate research in History at Manchester is stimulated by an interactive environment of high-profile historians working on cultural, social, economic and political research projects, in fields from the medieval to the late-modern period.

You will benefit from our renowned holdings in the John Rylands University Library and numerous regional historical research assets, such as the People's History Museum. We have a highly successful record in

securing outside PhD awards, as well as our own studentship, and we also offer sustained and material support with career development (eg through teaching assistantships).

Our wide range of MA courses, taught by leaders in their fields, offer an advanced training in the current state of knowledge in these fields – and, for those seeking it, a springboard for PhD research. The quality of our programmes has been recognised by an AHRC block grant of four to five awards annually for doctoral research and three to four awards annually for our MA, complemented by various University awards.

Find out more

www.manchester.ac.uk/history

pg-history@manchester.ac.uk

tel +44 (0)161 306 1259 /

+44 (0)161 275 3144

fax +44 (0)161 275 3098

Research programmes

History PhD

FT PT

History: Economic and Social

History Integrated PhD

FT

Taught courses

Cultural History MA

FT PT

Early Modern History MA

FT PT

Economic and Social History MA

FT PT

History MA

FT PT

Medieval Studies MA

FT PT

Modern British History MA

FT PT

Modern European History MA

FT PT

Victorian Times MA

FT PT

War, Culture and History MA

FT PT

World History MA

FT PT

See also *Humanitarianism and Conflict Response*

Humanitarianism and Conflict Response

Research programmes

Humanitarianism and Conflict Response PhD **FT PT**

Taught courses

Humanitarianism and Conflict Response MA **FT PT**

For details, see Manchester Doctoral College on pages 96-99

International Development – IDPM

PROFILE

32 Teaching staff

7 Research staff

300 Taught postgraduates

60 Research postgraduates

RAE **4*25% 3*40% 2*25% 1*10%**

The Institute for Development Policy and Management (IDPM) at Manchester is one of the UK's leading centres for training and research on international development issues.

Our objective is to promote social and economic development and

to reduce poverty, particularly within lower-income countries and for disadvantaged groups, by enhancing the capabilities of individuals and organisations through education, training, consultancy, research and policy analysis.

Following a review in 2000 by an independent panel from the UK Government's Quality Assurance Agency, IDPM was awarded the maximum score possible (24), achieving excellence in all aspects of teaching investigated; while in the 2008 Research Assessment Exercise, 65% of our research activity was judged to be "world-leading" or "internationally excellent".

Within a friendly and supportive atmosphere, we offer the services of a wide range of people specialising in the practical problems of policy formulation, planning and management, in the context of international development – all backed up by specialist library and computing facilities and 50 years of institutional experience. We have a large and diverse postgraduate population.

IDPM is also home to the Chronic Poverty Research Centre, funded by DfID, and is substantially involved in the work of the recently founded Brooks World Poverty Institute, chaired by Nobel Laureate Professor Joseph Stiglitz.

Find out more

www.manchester.ac.uk/idpm

sed.admissions@manchester.ac.uk
tel +44 (0)161 275 0969
fax +44 (0)161 275 0421

Research programmes

Development Policy and Management MPhil/PhD **FT PT**

Taught courses

Development Economics and Policy MSc

FT PT

Development Finance MSc

FT PT

Development Studies MA

FT PT

Development Studies (Research Training) MA

FT PT

Global Urban Development and Planning MSc

FT PT

Globalisation and Development MSc

FT PT

Human Resource Development (International Development) MSc

FT PT

Human Resource Management (International Development) MSc

FT PT

Human Resource Management and Development (International Development) by Distance Learning MSc/PgDip/PgCert

DL

ICTs for Development MSc

FT PT

Industry, Trade and Development MSc

FT PT

International Development (Research Training) MSc

FT PT

International Development: Development Management MA

FT PT

International Development: Economics and Management of Rural Development MSc

FT PT

International Development: Environment and Development MSc

FT PT

International Development: Politics and Governance MA

FT PT

International Development: Poverty, Conflict and Reconstruction MA

FT PT



International Development: Public Policy and Management MA
FT PT

International Development: Social Policy and Social Development MA
FT PT

Management and Implementation of Development Projects MSc
FT PT

Management and Information Systems: Change and Development MSc
FT PT

Management and Information Systems: Change and Development MSc/PgDip/PgCert
DL

Organisational Change and Development MSc
FT PT

Poverty and Development MSc
FT PT

See also Geography; Planning and Landscape; Manchester Business School; Humanitarianism and Conflict Response

Latin American Cultural Studies

PROFILE

40 Academic staff (11 in the School of Languages, Linguistics and Cultures (LLC))
50 Research postgraduates (across two Schools, LLC and Social Sciences)
8 Taught postgraduates
RAE 4*30% 3*45% 2*20% 1*5%

The Centre for Latin American and Caribbean Studies is our focal point for the diverse and geographically dispersed research activities associated with Latin America and the Caribbean across the University.

The 2008 RAE rating for Iberian and Latin American Languages placed us at the top of the national league tables, with 75% of our research activity rated "world-leading" or "internationally excellent".

We bring together one of the largest teams of Latin-Americanists and Caribbeanists in Europe, from a wide array of disciplines and departments: Cultural Studies, Social Anthropology, Literature and Linguistics, History and Art History, Geography, Drama and Screen Studies, Political Sciences, Development Studies, Economics, and Business. We co-ordinate research projects across disciplinary, institutional and national boundaries, providing a fuller understanding of the Latin American and Caribbean regions and of the broader relations between north and south in the context of contemporary cultural, political and economic globalisation.

Academics in Social Anthropology and Latin American Studies co-direct the Centre. Staff associated with us also teach an MA course in Latin American Cultural Studies and supervise PhD students in this field, who are attracted by our interdisciplinary approach. Excellent facilities include a Centre for Graduate Studies, which provides space specifically for postgraduate students, and the comprehensive holdings of the John Rylands Library.

Find out more

www.manchester.ac.uk/llc/research/staff/splas

www.manchester.ac.uk/llc/clacs

pg-latinamerican@manchester.ac.uk
tel +44 (0)161 275 3559
fax +44 (0)161 275 3031

Research programmes

Latin American Cultural Studies
MPhil/PhD
FT PT

Taught courses

Latin American Cultural Studies MA
FT PT

See also European Languages and Cultures

Law

PROFILE

70 Academic staff
250 Taught postgraduates
70 Distance learning postgraduates
80 Research postgraduates
RAE 4*10% 3*40% 2*40% 1*10%

Incorporating Specialist Research Centres:

Centre of Criminology and Criminal Justice

Institute for Law, Economy and Global Governance

Centre for Social Ethics and Policy

Regulation, Security and Justice Research Centre

Institute for Science Ethics and Innovation, directed by Professor John Harris and chaired by Nobel Laureate Sir John Sulston

Sustainability, Policy and Regulation Research Centre

We have one of the oldest and most prestigious law schools in the country, with a major international reputation. Since our inception, we have been at the forefront of legal and public policy formation and development, and many of our graduates and staff have played central roles in public life.

Key
FT full-time
PT part-time
DL distance learning

Research Assessment Exercise % of research activity judged to be:

4* world leading **2*** internationally recognised
3* internationally excellent **1*** nationally recognised

The School of Law is a research-led teaching centre, which includes not only lawyers, but also criminologists and ethicists. Significant interdisciplinary strengths have been enhanced by: the Centre for Social Ethics and Policy, which conducts cutting-edge medical ethical research; the Centre of Criminology and Criminal Justice; and the Institute for Science, Ethics and Innovation.

We have considerable strengths in common and public law, jurisprudence, EU law, commercial law, intellectual property, bioethics, criminal law, criminal justice and criminology, law and economics, law and development, and regulation.

You have access to one of the best law libraries in the country, a wide variety of web-based resources and the School's active seminar programmes. All research students receive formal training in research methods and research skills.

Find out more

www.manchester.ac.uk/law

Research programmes:

research-law@manchester.ac.uk
 tel +44 (0)161 306 1279

Taught courses:

pg-law@manchester.ac.uk
 tel +44 (0)161 306 1270/275 4764

Centre for Social Ethics and Policy:

csep@manchester.ac.uk
 tel +44 (0)161 306 1265

fax (for all the above):
 +44 (0)161 275 4724

Research programmes

Bioethics and Medical
 Jurisprudence PhD

FT PT

Law MPhil/PhD

FT PT

Taught courses

LLM **FT**

The following streams of the LLM are available:

- General*
- Corporate Governance
- European Law and Governance*
- Intellectual Property
- International Business and Commercial Law
- International Financial Law
- International Trade Transactions
- Law and Development
- Public International and European Law *

Also available are:

Health Care Ethics and Law
 MA/PgDip

FT PT

Health Care Ethics and Law MA

PT DL

Health Care Ethics and Law MSc
 (Intercalated)

FT

Intellectual Property Law PgDip
 (validated route)

FT

Law and Development MA

FT PT

*New streams for September
 2010 entry

See also *Criminology*
 and *Criminal Justice*

Linguistics and English Language

PROFILE

17 Academic staff

20 Taught postgraduates

15 Research postgraduates
 English Language and
 Literature

RAE **4*30%** **3*45%** **2*25%** **1*0%**

Linguistics

RAE **4*10%** **3*45%** **2*35%** **1*10%**

We boast a leading international role in several fields within the discipline of Linguistics and English Language, including the linguistics of English and the study of endangered languages. The RAE 2008 judged more than half of our Linguistics and English Language work to be in the top two research categories of 4* ("world-leading") and 3* ("internationally excellent").

We are committed to extending and deepening the understanding of natural language by fostering an environment favourable to empirical research on all aspects of linguistic theory. Because we believe that it is important to work from a solid empirical base, we particularly encourage fieldwork on living languages and careful study of historical and modern corpora by both staff and students.

At the same time, all our staff are committed to an understanding of the nature of human language based on serious theoretical reflection. We believe that a thriving discipline will offer a range of theoretical perspectives. Current staff regularly teach and conduct research in phonetics, phonology (especially optimality theory), morphology, syntax (especially lexical-functional grammar and

construction grammar), semantics, pragmatics, historical linguistics (especially English, romance and Germanic), language contact, typology, language documentation, sociolinguistics, psycholinguistics, and corpus and computational linguistics. Members of our discipline have published significant studies in each of these areas.

Among our excellent resources is a phonetics laboratory, with facilities for signal analysis, speech synthesis, laryngography and electropalatography, and a psycholinguistics lab with facilities for production, comprehension and artificial language learning studies. Support is also provided for child language learning studies. We also possess a large and diverse collection of linguistic corpora and tools for computational linguistic analysis.

Find out more

www.manchester.ac.uk/llc/subjects/lel

pg-linguistics@manchester.ac.uk
tel +44 (0)161 275 3559
fax +44 (0)161 275 3031

Research programmes

English Language PhD

FT PT

Linguistics PhD/MPHil

FT PT

Taught courses

Applied Linguistics MA

FT PT

Applied Linguistics PgDip

FT

English Language MA

FT PT

Linguistics and English Language Integrated MA/PhD

FT

Languages and Linguistics MA

FT PT

Languages and Linguistics PgDip

FT

Linguistics MA

FT PT

Linguistics PgDip

FT

Manchester Business School

PROFILE

304 Academic and research staff

1,314 Taught postgraduates

318 Research postgraduates

2,730 Part-time/blended learning postgraduates

RAE **4*25%** **3*40%** **2*30%** **1*5%**

Manchester Business School is one of the top ten business schools in the UK and aims to break into the top 30 in the world. We have earned a world-class reputation for outstanding teaching and research, supported by a number of independent organisations. The most recent RAE positioned us as the UK's leading centre for business research, and our teaching is rated as "excellent" by the Quality Assurance Agency and the UK government funding body (HEFCE). Both students and business come to us when they need to develop cutting-edge business expertise.

The Financial Times has given the School an average ranking of 30th in the world for its MBA programme over the last five years. It has also placed our doctoral programme either first or second in the world over the same period. We are part of a select group of business schools worldwide to have gained 'triple accreditation': from

AACSB International, AMBA (The Association of MBAs) and EQUIS.

We recognise that an international perspective is essential to career success. Our masters degrees attract students from over 70 countries, so you will learn to work with different cultures: a critical skill in the contemporary international business environment.

Our 20 specialist masters courses are designed to provide you with the skills to think originally and give you a head start when you graduate. Our Full-time MBA programme offers experienced managers the chance to work on a wide range of live projects and undertake an internship, while our links with more than 30 international institutions through the exchange programme allow students on the MBA and two MSc courses an opportunity to spend a semester abroad. We also offer a blended-learning Global MBA programme, designed for executives who do not want to delay their career progression. Our postgraduate research programme is the largest business and management programme of its kind in a UK business school and is recognised by the Research Councils for award of scholarships.

As a research-led school, our academics regularly publish in top international journals. Our Accounting and Finance Group was the first of its kind in Europe to be recognised by the EU as a (Marie Curie) Registered Early Training Doctoral Research Site. Three of our specialist masters courses are accredited by professional bodies: the Chartered Institute of Personnel and Development (our two MSc Human Resource Management and



Key
FT full-time
PT part-time
BL blended learning

Research Assessment Exercise % of research activity judged to be:

4* world leading **2*** internationally recognised
3* internationally excellent **1*** nationally recognised

Industrial Relations courses), and the British Psychological Society (MSc Organisational Psychology). We regularly host leading conferences, including in 2010: the R&D Management Conference, Case Studies in Service Innovation conference, the ESRC Fairness at Work series and the Divisions in Accounting Thought in the Aftermath of the Credit Crunch conference.

Generous funding from Eddie Davies OBE, owner of Bolton Wanderers FC, continues to support innovation at the School through the Centre for Enterprise. The Centre runs an annual Dragons Den-style competition - helping budding entrepreneurs set up their own businesses. Students are encouraged to take part in social enterprise projects, in Manchester and across the world, through Students in Free Enterprise (SIFE). MBS student Benjamin Scheerbath was recently named Team Leader of the Year at the SIFE Volunteering England awards and The University of Manchester won the inaugural Community Engagement Award.

Find out more

www.mbs.ac.uk

mba@mbs.ac.uk
 (for MBA programmes)
pg@mbs.ac.uk
 (for other taught courses)
 tel +44 (0)161 306 1339
 fax +44 (0)161 275 7249

pgresearch@mbs.ac.uk
 (for research programmes)
 tel +44 (0)161 275 6591/0784
 fax +44 (0)161 275 6596

Research programmes

Doctor of Philosophy PhD

FT PT

Doctor of Business Administration
 DBA

BL

Master of Philosophy MPhil

FT PT

Master of Research MRes

FT PT

Master of Enterprise MEnt

FT PT

Doctor of Enterprise EntD

FT PT

Taught courses

Accounting and Finance MSc

FT

Analytics: Operational Research
 and Risk Analysis MSc

FT

Business Administration The
 Manchester Global MBA
 (accelerated)

PT BL

Business Administration The
 Manchester Global MBA

PT BL

Business Administration for The
 Manchester Global MBA (sports
 and major events pathway)

PT BL

Business Administration for The
 Manchester Global MBA (finance
 pathway)

PT BL

Business Administration for The
 Manchester Global MBA
 (engineering pathway)

PT BL

Business Administration for The
 Manchester Global MBA
 (construction pathway)

PT BL

Business Administration Full-time
 MBA

FT

Chinese Business and
 Management MSc

FT

Corporate Communications and
 Reputation Management MSc

FT

Finance MSc

FT

Finance and Business Economics
 MSc

FT

Global Business Analysis MBus

FT

Healthcare Management MSc

FT PT

Human Resource Management and
 Industrial Relations MSc

FT

Information Systems: Business
 Information Technology MSc

Information Systems: e-Business
 Technology MSc

Information Systems: Organisations
 and Management MSc

FT

Innovation Management and
 Entrepreneurship MSc

FT PT

International Business and
 Management MSc

FT

International Human Resource
 Management and Comparative
 Industrial Relations MSc

FT

Managerial Psychology MSc

FT PT

Marketing MSc / Marketing
 (Specialism) MSc

FT

Operations, Project and Supply
 Chain Management MSc

FT

Organisational Psychology MSc

FT PT

Public Administration MPA

FT

Quantitative Finance: Financial
 Engineering MSc

Quantitative Finance: Risk
 Management MSc

FT

*See also Economics; International
 Development – IDPM; Politics*



Middle Eastern Studies

PROFILE

12 Academic staff
8 Taught postgraduates
14 Research postgraduates
RAE 4*15% 3*45% 2*20% 1*15%

Middle Eastern Studies offers the traditional language-based disciplines of Arabic, Hebrew, Persian and Turkish studies, as well as a range of interdisciplinary areas, including: cultures, religions (ancient, classical and modern), modern history, translation and literatures. Areas of particular expertise include Islamic studies, Israeli/Jewish studies, the emergence of Middle East nationalisms and contemporary cultural studies. We achieved a successful outcome in the 2008 RAE, with 60% of our research activities judged to be either "world-leading" or "internationally excellent".

Middle Eastern Studies is the editorial home to one of the field's most distinguished scholarly journals, the *Journal of Semitic Studies*. We also partner with Edinburgh and Durham universities in the Centre for the Advanced Study of the Arab World, which fields one of the largest concentrations of expertise in the UK. This Centre brings together more than 50 full-time staff drawn from a variety of disciplines in the arts, humanities and social and political sciences, all working on areas directly related to the Arab world. Hosting a large grant AHRC project on ancient Jewish literature, Middle Eastern Studies also constitutes part of the University's Centre for Jewish Studies.

Excellent facilities include a Centre for Graduate Studies, which provides space specifically for postgraduate students, and the comprehensive holdings of the John Rylands University Library, one of only five UK National Research Libraries.

Find out more

www.manchester.ac.uk/llc/subjects/middle-eastern

pg-mideast@manchester.ac.uk
tel +44 (0)161 275 3559
fax +44 (0)161 275 3031

Research programmes

Arab World Studies PhD

FT

Middle Eastern Studies PhD/MPhil

FT PT

Taught courses

Arab World Studies MA
(with the universities of Edinburgh and Durham)

FT

A new portfolio of masters courses will be available for September 2011. To find out more, go to:

www.manchester.ac.uk/llc/postgraduate

Museology

PROFILE

3 Academic staff
35 Taught postgraduates
14 Research postgraduates
RAE 4*40% 3*40% 2*15% 1*5%

The Centre for Museology was launched in 2002 to develop research and teaching in museum theory and practice. We work closely with the University's own museum and art gallery, and promote academic and professional collaboration with the museum profession in the North West, throughout the UK and overseas.

Manchester has been training museum professionals for over 40 years, and the Art Gallery and Museum Studies MA is one of the most popular courses of its kind in the UK. Today, our alumni work in senior positions in museums and galleries in Britain and overseas.

In 2009, the Centre for Museology became part of the Institute of Cultural Practices: a new centre for postgraduate and professional programmes that combine academic excellence with work-based training.

Find out more

www.manchester.ac.uk/museology

museology@manchester.ac.uk

tel +44 (0)161 306 1259 /

+44 (0)161 275 3144

fax +44 (0)161 275 3098

Research programmes

Museology PhD

FT PT

Professional Doctorate in Museum Practice

FT PT

Taught courses

Art Gallery and Museum Studies MA

FT PT

Key
FT full-time
PT part-time
DL distance learning

Research Assessment Exercise % of research activity judged to be:

4* world leading **2*** internationally recognised
3* internationally excellent **1*** nationally recognised

Professional Development Programme 6 months or 1 year

Music

PROFILE

13 Academic staff
 20 Taught postgraduates
 40 Research postgraduates
 RAE **4*50%** **3*35%** **2*10%** **1*5%**

Manchester is one of the best places for postgraduate study in music in the UK. We offer a stimulating and supportive environment for research and composing, with a good range of programmes in Musicology, Ethnomusicology, Composition and Electroacoustic Music Composition.

Our internationally renowned musicologists, ethnomusicologists, composers and performers earned an official "excellent" rating from the HEFCE teaching quality assessment.

The Government gave us the very highest rating for both the 1996 and 2001 RAE, while in the 2008 RAE Music was placed among the top three music departments in the country, and among the top one percent of all departments in all subjects nationwide.

Housed in the Martin Harris Centre, Music has excellent facilities, with a wide range of instruments (including baroque strings and wind), listening equipment, computers and electronic studios. The Centre is a new £6 million building and includes the new Cosmo Rodewald Concert Hall. A £2.2 million, purpose-built studio block, the Novars Research Centre for Electroacoustic Composition,

Performance and Sound Art, opened in 2007. With three major music libraries, Manchester's total library provision is excellent by any standards, and unrivalled in the north of England.

There are more than 81 concerts and visiting guest lectures in Music in a year, including recitals by the Danel String Quartet (our quartet in residence), the BBC Philharmonic and Psappha (contemporary music ensemble in association).

The research community is also supported by Musicology Forum and Composers' Forum, a seminar series for staff and students that discusses current projects and the state of the field.

All postgraduate composers receive at least one professional performance a year and the level of practical ability among our undergraduates is exceptionally good, enabling new compositions by postgraduates to be performed to an unusually high standard by fellow students. MANTIS (Manchester Theatre in Sound) provides electroacoustic composers with regular opportunities to present their work in public. There are also performance opportunities within the city of Manchester, a thriving cultural centre.

Each research postgraduate student is allocated a main supervisor and two further supervisory panel members, while our friendly and informal atmosphere also means that you can approach any member of staff.

Find out more

www.manchester.ac.uk/music

pg-music@manchester.ac.uk
 tel +44 (0)161 306 1259 /
 +44 (0)161 275 3144
 fax +44 (0)161 275 3098

Research programmes

Music: Composition PhD

FT PT

Music: Electroacoustic Composition PhD

FT PT

Music: Musicology PhD

FT PT

Taught courses

Composition MusM

FT PT

Electroacoustic Music Composition MusM

FT PT

Music and Drama MA

FT PT

Musicology MusM

FT PT

See also Drama

Philosophy

PROFILE

14 Teaching staff
 14 Taught postgraduates
 22 Research postgraduates
 RAE **4*10%** **3*35%** **2*50%** **1*5%**

Philosophy at Manchester is at an exciting period in its history. We are now a self-standing discipline area within the School of Social Sciences, and Peter Goldie took up the Samuel Hall Chair in 2005. Four new members of staff joined Philosophy in 2007. You will find the atmosphere at Manchester intellectually stimulating and supportive.

All of our lecturing staff are research active and, as a postgraduate student, you will be fully integrated into Philosophy's research-oriented activities. In addition to holding weekly research seminars, the Philosophy group has hosted a series of international conferences –



including the 2005 Joint Session of the Aristotelian Society and Mind Association, and conferences on Truthmakers (2002), Analytical Aesthetics (2003), Religion and the Emotions (2006), Abstract Objects (2006), Emotion Rationality and Value (2007), The Philosophy of Scanlon (2009) – and holds an annual workshop on Philosophy of Language. There is also an annual graduate conference.

Find out more

www.manchester.ac.uk/socialsciences

pg-soss@manchester.ac.uk
tel +44 (0)161 275 1296
(taught courses)
tel +44 (0) 161 275 4743
(research programmes)
fax +44 (0)161 275 2450

Research programmes

Philosophy PhD
FT PT

Taught courses

Philosophy MA/PgDip
FT PT
Philosophy MRes
FT PT
Political Economy (Research)
MA/PgDip
FT PT
Political Economy (Standard)
MA/PgDip
FT PT

Planning and Landscape

PROFILE

14 Academic staff
80 Taught postgraduates
20 Research postgraduates
RAE **4*20% 3*40% 2*30% 1*10%**

The Planning and Landscape unit of The University of Manchester is proud to be one of the oldest and largest professionally recognised land use and environmental planning schools in the UK.

We have an active research culture with a strong commitment to work at the cutting edge of current practice. In the 2008 RAE, 60% of our research activity was ranked as "world-leading" or "internationally excellent", and in the past five years we have attracted in excess of £2.5 million in research and training contracts from research councils and foundations, international organisations, central and local governments, and commercial and voluntary bodies.

As part of the School of Environment and Development, PhD students in Planning and Landscape benefit from being integrated into a vibrant, multidisciplinary research community. We have particular expertise in environmental planning and management, and spatial planning / urban development, but we welcome applications for postgraduate research in several planning-related fields. The 2008 RAE praised the Manchester PhD Planning programme for "outstanding quality evident in the research culture and student support".

Our masters courses are accredited by the Royal Town Planning Institute (RTPI). Graduates of the Master in Planning (MPlan) degree can proceed to become full members of the RTPI and chartered planners. Our MAs in Environmental Impact Assessment and Management and in Urban Regeneration and Development are also accredited by the RTPI as specialist masters degrees.

Find out more

www.manchester.ac.uk/planning

sed.admissions@manchester.ac.uk
tel +44 (0)161 275 0969
fax +44 (0)161 275 0421

Research programmes

Planning and Landscape MPhil/PhD
FT PT

Taught courses

Environmental Impact Assessment and Management MA
FT PT
Global Urban Development and Planning MA
FT PT
Planning MPlan
FT PT
Planning (Research) MPlan
FT
Urban Regeneration and Development MA
FT PT

See also Architecture; Geography; International Development – IDPM

Key
FT full-time
PT part-time
DL distance learning

Research Assessment Exercise % of research activity judged to be:

4* world leading **2*** internationally recognised
3* internationally excellent **1*** nationally recognised

Politics

PROFILE

40 Teaching staff
 4 Research staff
 150 Taught postgraduates
 55 Research postgraduates
 RAE **4*20%** **3*30%** **2*30%** **1*20%**

We are one of Europe's top centres for research training and teaching in politics, bringing together one of the largest groupings of political scientists and international relations scholars in the UK and covering almost all areas of the disciplines. With such extensive and high quality teaching and training resources, we offer our postgraduates a vast range of choices when it comes to taught courses and research supervision. We provide a challenging intellectual atmosphere for group study among postgraduates, along with the best possible support for individual students.

Find out more

www.manchester.ac.uk/socialsciences

pg-soss@manchester.ac.uk
 tel +44 (0)161 275 1296 (taught courses)
 tel +44 (0)161 275 4743 (research programmes)
 fax +44 (0)161 275 2450

Research programmes

Politics MPhil/PhD
FT PT

Taught courses

Human Rights (Research Route)
 MA/PgDip

FT PT

Human Rights Pathway
 Human Rights/Law Pathway

Human Rights (Standard Route)
 MA/PgDip

FT PT

Human Rights Pathway
 Human Rights/Law Pathway

International Politics (Research Route) MA/PgDip

FT PT

International Political Economy Pathway
 International Relations Pathway

International Politics (Standard Route) MA/PgDip

FT PT

International Political Economy Pathway
 International Relations Pathway
 Political Science (Research Route) MA/PgDip

FT PT

Democracy and Elections Pathway
 European Politics and Policy Pathway
 Governance and Public Policy Pathway
 Political Theory Pathway

Political Science (Standard Route) MA/PgDip

PT FT

Democracy and Elections Pathway
 European Politics and Policy Pathway
 Governance and Public Policy Pathway
 Political Theory Pathway

Politics MA/PgDip

FT PT

Political Economy (Research) MA/PgDip

FT PT

Political Economy (Standard) MA/PgDip

FT PT

See also Manchester Business School; Social Statistics; Humanitarianism and Conflict Response

Religions and Theology

PROFILE

18 Academic staff
 23 Taught postgraduates
 47 Research postgraduates
 RAE **4*25%** **3*40%** **2*30%** **1*5%**

Covering an unusually wide range of religious traditions, our masters degree courses offer preparation either for further study, or for work in which religious and cultural awareness is important. They are taught mainly in small-group seminars.

Most of our subjects have a distinctive Manchester identity. Our theology courses tend to relate closely to cultural and practical issues, while many religion courses have strong links to politics. We put South Asian religious traditions in contexts that cut across conventional boundaries. We approach the Bible in its original contexts, such as Dead Sea Scrolls and the Roman Empire. We cover every period of Judaism, from Second Temple to the Holocaust and its consequences. For Christianity, we draw on resources from the John Rylands Library, a treasure house of everything from John Wesley's letters, to the oldest New Testament fragment.

We have one of the strongest concentrations of PhD students in the UK, with some studentships available for both EU and international students. We offer supervision by specialists in the religions of South and Central Asia, the Middle East and Europe, including Theology and Biblical Studies. These are backed by major research centres, such as the Religion and Civil Society Network,



Centre for Biblical Studies and Centre for Jewish Studies. They organise seminars and conferences, bringing in scholars from around the world.

Our doctoral graduates have gone on to hold top academic posts in the USA, Korea, Australia and many other places.

Find out more

www.manchester.ac.uk/religion

pg-religions@manchester.ac.uk
tel +44 (0)161 306 1259 /
0161 275 3144
fax +44 (0)161 275 3098

Research programme

Religions and Theology PhD
FT PT

Taught courses

Religions and Theology MA
FT PT

Religions and Theology
(Biblical Studies) MA
FT PT

Religions and Theology
(Jewish Studies) MA
FT PT

Religions and Theology
(Religion and Political Life) MA
FT PT

South Asian Studies MA
FT PT

Social Anthropology

PROFILE

18 Teaching staff
8 Research staff
40 Taught postgraduates
40 Research postgraduates
RAE **4*20% 3*30% 2*40% 1*10%**

Social Anthropology at Manchester is an internationally renowned and research-led discipline, covering many areas of the world and providing both state-of-the-art and core anthropology teaching, and a diverse range of research expertise.

In addition to the staff based in the discipline, anthropologists appointed to posts in University Research Centres (eg the Research Institute in Cosmopolitan Cultures, the Centre for Research on Socio-Cultural Change and the Centre for Advanced Studies of the Arab World) may also participate in postgraduate supervision.

We house the Granada Centre for Visual Anthropology, which has developed some of the most innovative approaches towards anthropology and visual media over recent decades and is internationally renowned for its training programme in the use of film, video and other audio-visual media within social anthropology.

We have ESRC funding opportunities for UK/EU students pursuing research degrees in social anthropology and our visual anthropology courses are eligible for AHRC funding. Applicants regularly compete well in School, Faculty and University competitions for postgraduate funding.

Our MA courses are known for their intellectual rigour and the personal supervision students receive, while our research students form a lively community drawn from many different countries.

Find out more

www.manchester.ac.uk/socialsciences

pg-soss@manchester.ac.uk
tel +44 (0)161 275 4471
(taught courses)
tel +44 (0)161 275 1296/4471
(research programmes)
fax +44 (0)161 275 2450

Research programmes

Ethnographic Documentary MPhil
FT PT

Social Anthropology MPhil/PhD
FT PT

Social Anthropology with Visual
Media MPhil/PhD
FT PT

Visual Anthropology MPhil
FT PT

(A PhD in Anthropology, Media and Performance will run from September 2010. Applications should be made through the School of Arts, Histories and Cultures)

Taught courses

Anthropological Research MA
FT PT

Social Anthropology MA/PgDip
FT PT

(This MA has seven new named pathways: Research Methods; Cities and Migration; Latin American Studies; Culture, Ethnography and Development; Museums and Material Culture; Media and Performance; Visual and Sensory Media)

Visual Anthropology MA
FT

Key
FT full-time
PT part-time
DL distance learning

Research Assessment Exercise % of research activity judged to be:

4* world leading **2*** internationally recognised
3* internationally excellent **1*** nationally recognised

Social Change

PROFILE

6 Professors
 13 Research Fellows/Associates
 15 Visiting/Associated Faculty
 from Oxford, Harvard and
 Manchester

RAE **4*40%** **3*20%** **2*25%** **1*15%**

The Institute for Social Change (ISC) is an interdisciplinary centre conducting empirical research into the causes and consequences of social, political and ethnic change, and the impact of these on social cohesion and inequality.

ISC hosts major collaborative research projects such as 'Social Change: a Harvard-Manchester Initiative' and has links with renowned scholars such as Robert Putnam (Visiting Professor at ISC) and Bruce Western.

Our MSc is structured to foster understanding of the social and political processes driving social change, combined with advanced training in quantitative social science methods. PhD candidates are eligible to apply for fully funded three- and four-year studentships offered exclusively to students in ISC.

Find out more

www.manchester.ac.uk/socialchange

pg-soss@manchester.ac.uk
 tel +44 (0)161 275 4471
 (taught courses)
 tel +44 (0)161 275 1296
 (research programmes)
 fax +44 (0)161 275 2450

Research programmes

Social Change MPhil/PhD
FT PT

Taught courses

Social Change MSc/PgDip
FT PT

Find out more

www.ccsr.ac.uk

pg-soss@manchester.ac.uk
 tel +44 (0)161 275 4471
 (taught courses)
 tel +44 (0)161 275 1296
 (research programmes)
 fax +44 (0)161 275 2450

Social Statistics

PROFILE

12 Teaching staff
 8 Research staff
 18 Taught postgraduates
 27 Research postgraduates

RAE **4*40%** **3*20%** **2*25%** **1*15%**

In collaboration with Cathie Marsh Centre for Census and Survey Research, Social Statistics is a high profile centre for applied quantitative research.

Our research activity is both substantive and methodological. Our methodological research informs our interdisciplinary research applications, which in turn provide a testing ground for methodological innovations. Our research strengths are reflected in our 6* rating in the 2001 Research Assessment Exercise (RAE), and top rating as part of the Sociology submission for the 2008 RAE.

Our graduate programmes are formally recognised by ESRC, from whom we receive a large number of PhD quota and CASE awards each year. PhD students join a thriving research programme and receive high quality training and supervision tailored to their particular needs.

Our Social Research Methods and Statistics MSc/PgDip course provides a firm grounding in advanced quantitative methods, taught within an applied social science framework.

Research programmes

Social Statistics MPhil/PhD
FT PT

Taught courses

Social Research Methods
 and Statistics MSc/PgDip
FT PT



Sociology

PROFILE

25 Academic staff
35 Taught postgraduates
50 Research postgraduates
RAE **4*40%** **3*20%** **2*25%** **1*15%**

Sociology at Manchester is one of the UK's largest and most prestigious centres for the subject. We were judged in the 2008 RAE to be the best in the nation, with a higher proportion of our research activity judged to be "world-leading" than that of any other university in the country.

Our stimulating research environment for postgraduate study includes several research centres and clusters attracting major research grants. We regularly host national and international events, to which postgraduates are invited.

Seminars in the Sociology discipline and the related research centres provide a regular forum for postgraduate students to engage with cutting-edge research. The MSc in Sociological Research is recognised by the ESRC as offering the training required for doctoral study, with training in both qualitative and quantitative methods.

We also have a good record of securing funding for PhD students. We currently have two ESRC quota awards and two Sociology studentships.

Find out more
www.manchester.ac.uk/socialsciences

pg-soss@manchester.ac.uk
tel +44 (0)161 275 1296
(taught courses)
tel +44 (0)161 275 4743
(research programmes)
fax +44 (0)161 275 2450

Research programmes

Sociology MPhil/PhD
FT PT

Taught courses

Applied Social Research MA/PgDip
FT PT
Sociological Research MSc
FT PT
Sociology MA/PgDip
FT PT

See also *Gender, Sexuality and Culture*; *Social Statistics*; *Humanitarianism and Conflict Response*

Translation, Interpreting and Intercultural Studies

PROFILE

6 Core academic staff
(plus specialist tutors)
47 Taught postgraduates
24 Research postgraduates
Asian Studies
RAE **4*10%** **3*25%** **2*45%** **1*20%**
French RAE **4*15%** **3*35%** **2*35%** **1*15%**
German, Dutch and Scandinavian Languages
RAE **4*20%** **3*35%** **2*30%** **1*15%**
Iberian and Latin American Languages
RAE **4*30%** **3*45%** **2*20%** **1*5%**
Middle Eastern and African Studies
RAE **4*15%** **3*45%** **2*20%** **1*15%**

The Centre for Translation and Intercultural Studies (CTIS) has an international reputation for the quality of its teaching and research activities.

Our MA in Translation and Interpreting Studies (MATIS) equips you with the knowledge and skills to pursue a successful career in translation and interpreting. With its combination of practice and research-oriented course units, it also provides excellent preparation for further study at PhD level. Specialist translation course units (in any language combination) include: audiovisual, literary, commercial, scientific and technical translation; translating for international organisations; and translation technology. Specialist

Key
FT full-time
PT part-time
DL distance learning

Research Assessment Exercise % of research activity judged to be:

4* world leading **2*** internationally recognised
3* internationally excellent **1*** nationally recognised

interpreting options include consecutive interpreting (English-Arabic/ Chinese/ French/ German/ Spanish) and public service interpreting (English-Arabic/ Chinese/ French/ Spanish – other language combinations may be available subject to demand). An optional unit on cross-cultural pragmatics offers intensive preparation for doctoral study. We also offer language-specific course units in English-Chinese.

The specialised MA in Conference Interpreting (MACINT) prepares you for a professional career as a conference interpreter. Intensive practical training in consecutive and simultaneous interpreting in conference settings is complemented by research-oriented course units that enable you to critically reflect on your own and others' interpreting performance – excellent preparation for doctoral study. On MACINT, you may offer one of two profiles, reflecting the two distinct profiles of practising conference interpreters:

- Profile 1: You will have English as your native language (A) and two passive foreign languages (C) from Arabic, Chinese, French, German and Spanish. You will be trained in both types of interpreting out of both C languages into your A language.
- Profile 2: You will have Arabic, Chinese, French, German, or Spanish as your native language (A) and English as an active foreign language (B); or English as your native language (A) and Arabic, Chinese, French, German, or Spanish as an active foreign language (B). You will be trained in both types of interpreting in both directions (ie B→A and A→B).

Core CTIS members submitted to five of the 2008 RAE units of assessment (see Profile above), reflecting the great breadth of our research activity. The outstanding results achieved place CTIS amongst the UK's leading research groups of its kind. Our staff supervise doctoral research in numerous and innovative areas of translation and interpreting studies. (For descriptions of all past and current PhD projects, see our website.)

CTIS houses the Translational English Corpus: the largest computerised collection of translated English text anywhere in the world. This important research resource and our vibrant research environment (with one of the UK's largest postgraduate populations in translation and interpreting studies) attract visiting scholars from around the world.

Excellent facilities include a conference room with Televic simultaneous interpreting equipment, a self-access digital lab for independent study, the Centre for Graduate Studies (a purpose-designed workspace for postgraduate students) and the John Rylands University Library's comprehensive holdings. We organise international scholarly events and a weekly research seminar. MA students learn about careers and current trends in translation, interpreting and related areas through interaction with established professionals, who are invited to our Professional Development Workshops series.

Find out more

www.manchester.ac.uk/llc/ctis

pg-translation@manchester.ac.uk
 tel +44 (0)161 275 3559
 fax +44 (0)161 275 3031

Research programmes

Interpreting Studies PhD/Phil

FT

Translation and Intercultural Studies PhD/MPhil

FT

Taught courses

Conference Interpreting MA/PgDip

FT PT

Translation and Interpreting Studies MA/PgDip

FT PT

faculty of life sciences



Our research

The Faculty of Life Sciences is at the forefront of research in the life sciences and offers extensive opportunities for postgraduate education and training.

Research in our Faculty covers the whole breadth of the life sciences, from studies of individual molecules and genomes, up to whole populations of organisms, all within a single-School environment unimpeded by departmental barriers. The Faculty can lay claim to a plethora of scientific breakthroughs, some of which have direct significance for the fight against disease.

The quality and volume of research that we carry out is reflected in the results of the independent Research Assessment Exercise 2008, in which figures reveal that Manchester secured more research grant and studentship funding from the Biotechnology and Biological Sciences Research Council (BBSRC) than any other UK university.

The Faculty was ranked third in the country by quality alone in the two units evaluated in the 2008 Research Assessment Exercise. When these results were aggregated, we came second only to Cambridge – and ahead of Oxford – in terms of “research power”.

Opportunities for postgraduate research training within our laboratories – which are well supported financially and of international repute – are second-to-none. The skills and interests of our principal investigators are immense, leading to a vibrant and interactive research and teaching environment in which to pursue postgraduate studies.

No wonder this Faculty was identified by an independent review, carried out by The Scientist magazine, as one of the best places in the world for early-stage researchers to work.

www.manchester.ac.uk/lifesciences



Areas of excellence

Fighting disease

The war on cancer is being waged on several fronts, with pioneering research taking place to understand the basic biological mechanisms underlying cancer development. One group of researchers, for instance, is trying to understand how cells interact with their local environment and how this regulates their decision to live, die, stay put, or migrate. These studies are particularly important in the understanding of how breast cancers evolve and spread to other parts of the body.

Our researchers are also investigating a disease that is threatening to become the greatest threat to human health over the next few decades. As global obesity levels rise, so too does the incidence of diabetes – but scientists in our Faculty are leading the quest to understand the complex molecular and cellular processes at work in a bid to find new therapies for the condition. Our researchers have already laid bare the structure of a key house-keeping protein implicated in diabetes and other diseases of insulin-secreting cells, while another group is investigating the potential of insulin-secreting cell biology and human embryonic stem cells as a potential future cure.

One complication caused by diabetes is damage to the body's nervous system, but a team of Faculty scientists have discovered a way of stimulating

genes that prevent nerve damage caused by the disease. The result of successful clinical trials in this area could prevent thousands of hand and foot amputations resulting from diabetic neuropathy each year.

Other diseases being investigated by Faculty scientists include Alzheimer's, Parkinson's, stroke, cardiovascular disease, HIV and a number of eye conditions.

The Faculty of Life Sciences is one of the leading centres for research at the molecular level. For example, researchers are aiming to understand critical features that control cell function by asking key questions, such as: how do cells grow; how do cells produce functional tissues; and how do molecules move within and between cells?

Further areas of expertise

Pioneering work is also being carried out in the fields of evolutionary and developmental biology, bioinformatics and functional genetics, tissue regeneration and scarring, as well as animal and plant biology.

Life Sciences stats

1,000+ people involved in research
£70 million+ predicted research income
£170 million recent building investment

student profile

Name Annette Allen
Age 24
From Preston, England
Degree PhD Neuroscience
Graduates 2011



Why did you choose this degree?

"I took a BSc in Biology, followed by a Masters of Research (MRes) in Biological Sciences, both at The University of Manchester. While doing my MRes, I realised how much I enjoyed scientific research and was delighted to be able to continue my studies on a PhD. Not only would I be working in a role that I found rewarding and enjoyable, I would also (hopefully!) come out with a great qualification."

Why Manchester?

"I was conscious that, as a research institution, Manchester is ranked one of the highest in the UK. More importantly, my own positive experiences were vital when making the decision to carry on studying here. I was also drawn to the lab group that I am working with, knowing of their previous work in the field of visual neurophysiology."

"I think studying here will be greatly beneficial for my future prospects. I believe the high-class training I receive will provide me with a wide range of skills that will enable me to continue work in this discipline, or in others."

"In addition, since Manchester is one of the world leaders in many areas of scientific research, I feel my having studied here will be appealing to any potential employers."

What do you think of your course?

"Unsurprisingly, it has been a lot of hard work, with some tough experiments and long hours. Despite this, I have found it one of the most rewarding and enjoyable periods of my education. I have also found the course very well organised, with additional training activities giving me many opportunities to make the most of my time."

"I have found facilities and resources to be of a very high standard. I have made use of several of the 'Core Facilities' offered by the Faculty, and have found both equipment and training to be very good. I am also lucky enough to be based in the AV Hill building, which provides a great new environment to work in."

"I have had many positive experiences with staff; I would say the vast majority have been encouraging, supportive and enthusiastic about both the course and my research."

What do you most value about studying here?

"I think the University provides an enjoyable, dynamic and exciting working environment, full of enthusiastic people and with a positive attitude towards scientific research and postgraduate study. In turn, this provides a great environment to study in, and has made my experience a very positive one."

researcher profile

Name Dr Ewan Blanch
Job title Senior Lecturer
in Biophysics



What are your specialist areas of interest?

"My group uses laser spectroscopic techniques to study the structure and dynamics of biological molecules, seeking to understand how the structures of biomolecules affect their physiological function and how modifying the structure can lead to misfunction (ie disease)."

What are you currently working on?

"We work on a wide range of multidisciplinary projects with biologists, chemists and engineers, from structural analysis of complex carbohydrates, to developing new nanotechnological probes for identifying and characterising biomolecular markers of disease. Our laser-based methods have many advantages for studying biological samples not amenable to more conventional approaches. Since we bring novel approaches to important questions, it helps to have a sense of adventure."

Why is Manchester good for your research?

"Manchester brings together innovative and expert scientists keen to explore new opportunities. Biology in the 21st century will utilise exciting new tools and techniques, and tackling future challenges in medicine, society and the environment will require cooperation between scientists from diverse backgrounds. Manchester is leading this new drive in biological research."

What relevant facilities and resources are there?

"One of the country's most comprehensive suites

of laser spectroscopies, housed in a beautiful new research facility next-door to world-class biological scientists. Labs and core facilities are well-equipped and, as we are developing new methods of data analysis, working with some of the UK's leading bioinformaticists is a great advantage. At Manchester, it's easy to find the right expert to help; they're often just down the corridor."

How does your research benefit postgraduates?

"The spectroscopic methods we use, and sometimes help to develop, are increasingly important in research and industry. My students have established reputations through developing these spectroscopies, are active at international conferences and travel to other labs to conduct collaborative research. We provide expertise in cutting-edge techniques and train students to take those skills into their careers. Interdisciplinary collaboration also gives students experience in working on new ideas with interesting colleagues."

What makes the Faculty of Life Sciences a great place for postgraduates?

"FLS is one of the country's leading biology departments, not only in breadth and quality of research, but also in opportunities for students; for example, Manchester attracts world leaders in science to present their work to our students. Postgraduate research should be challenging, but we put in place both the facilities and guidance to help our students meet those challenges."



Life Sciences

PROFILE

285 Academic staff and independent Research Fellows
250 Postdoctoral staff
450 Postgraduate students
£134 million active research grants
£170 million investment in state-of-the-art facilities
Biological Sciences
RAE 4*25% 3*40% 2*30% 1*5%
Pre-Clinical and Human Biological Sciences
RAE 4*20% 3*45% 2*35% 1*0%

One of the largest and most successful research and teaching organisations of its kind in Europe, the Faculty of Life Sciences proudly fosters a scientific culture in which there are no traditional barriers between research disciplines. Shared expertise and the development of new technologies enable important bioscience problems to be approached using novel and innovative methods.

World-class research requires world-class facilities – and, with £170 million building investment, the Faculty can boast more than its fair share of state-of-the-art laboratory space in modern, purpose-built buildings. These include the £61 million Michael Smith Building, the £38 million Manchester Interdisciplinary Biocentre, the £32 million Core Technology Facility, and the £39 million AV Hill Building that houses a world-class neuroscience research facility.

The Manchester Incubator Building is a state-of-the-art biotechnology research and development centre, which offers superb laboratory facilities and infrastructure support

for research and development start-up businesses. The Core Technology Facility houses biotech businesses alongside academic staff in physiology and pharmacology research groups. The construction of a Neuroscience centre completes an impressive biomedical corridor that spans the entire length of the University campus.

In addition, the new Northwest Embryonic Stem Cell Centre is a research facility based within the Faculty that will produce human embryonic stem cells for treatment of a wide range of diseases and for tissue engineering and regenerative medicine.

The Faculty is also home to the Wellcome Trust Centre for Cell-Matrix Research, the Centre for History of Science, Technology and Medicine, the KNH Centre for Biomedical Egyptology and the Healing Foundation Centre for Tissue Regeneration

Postgraduate opportunities span all fields of life sciences, from the molecule to the cell, to the whole organism and environments.

Projects are offered from a range of exciting and challenging research themes.

Three- or four-year PhD programmes are tailored to suit students with different levels of research experience, and you will be carefully matched with a supervisor of your choice.

In addition, MRes and specialist MSc courses are taught in key areas designed to prepare you for further PhD study, or for a career in industry.

Employment opportunities

The Faculty of Life Sciences is very proud of the training opportunities that we provide for all our graduate students during their studies. Whether you are taking a one-year masters degree or a three- or four-year PhD programme, in any subject area, our Graduate Training Programme provides a variety of research and transferable skills, which will benefit all of the diverse career paths that Life Sciences graduates embark on.

Many students go on to have successful academic research careers, while others go into industrial research positions within pharmaceutical and biotechnology companies. Some embark on media and communications careers, teaching, academic administration, or careers within the public and environmental sector.

Find out more

www.manchester.ac.uk/lifesciences

Research programmes

Faculty of Life Sciences
Postgraduate Research Office

pgresearch.lifesciences@manchester.ac.uk
tel +44 (0)161 275 5608
fax +44 (0)161 275 5657

Taught courses

Faculty of Life Sciences
Recruitment and Admissions Office

pgtaught.lifesciences@manchester.ac.uk
tel +44 (0)161 275 5032
fax +44 (0)161 275 5456

Key
FT full-time
PT part-time
DL distance learning

Research Assessment Exercise % of research activity judged to be:

4* world leading **2*** internationally recognised
3* internationally excellent **1*** nationally recognised

Research programmes

Adaptive Organismal Biology
 PhD/MPhil

FT PT

Animal Biology PhD/MPhil

FT PT

Biochemistry PhD/MPhil

FT PT

Bioinformatics PhD/MPhil

FT PT

Biomolecular Science PhD/MPhil

FT PT

Biotechnology PhD/MPhil

FT PT

Cell Biology PhD/MPhil

FT PT

Cell Matrix Research PhD/MPhil

FT PT

Channels and Transporters
 PhD/MPhil

FT PT

Developmental Biology PhD/MPhil

FT PT

Egyptology PhD/MPhil

FT PT

Environmental Biology PhD/MPhil

FT PT

Evolutionary Biology PhD/MPhil

FT PT

Gene Expression PhD/MPhil

FT PT

Genetics PhD/MPhil

FT PT

History of Science, Technology
 and Medicine PhD/MPhil

PT

Immunology PhD/MPhil

FT PT

Integrative Neurobiology
 and Behaviour PhD/MPhil

FT PT

Membrane Trafficking PhD/MPhil

FT PT

Microbiology PhD/MPhil

FT PT

Molecular and Cellular
 Neuroscience PhD/MPhil

FT PT

Molecular Biology PhD/MPhil

FT PT

Molecular Cancer Studies
 PhD/MPhil

FT PT

Neuroscience PhD/MPhil

FT PT

Ophthalmology PhD/MPhil

FT PT

Optometry PhD/MPhil

FT PT

Organelle Function PhD/MPhil

FT PT

Pharmacology PhD/MPhil

FT PT

Physiology PhD/MPhil

FT PT

Plant Sciences PhD/MPhil

FT PT

Stem Cell Research PhD/MPhil

FT PT

Structural Biology PhD/MPhil

FT PT

Systems Neuroscience PhD/MPhil

FT PT

Toxicology PhD/MPhil

FT PT

Doctoral Training Centre programme*

Integrative Systems Biology

FT

** For further details, see
 Manchester Doctoral College
 on pages 96-99*

Taught courses

Biochemistry MSc/PgDip

FT

Bioinformatics MSc/PgDip

FT

Biological Sciences MRes (including
 Integrative Mammalian Biology)

FT

Biomechanics MSc/PgDip

FT

Biomedical and Forensic Studies
 in Egyptology MSc/PgDip

FT PT

Biotechnology and Enterprise
 MSc/PgDip

FT

Cancer Biology MSc/PgDip

FT

Cell Biology MSc/PgDip

FT

Computational Neuroscience
 MSc/PgDip

FT

Developmental Biology MSc/PgDip

FT

Evolutionary Genetics
 and Genomics MSc/PgDip

FT

History of Science, Technology
 and Medicine MSc/PgDip
 (including Science Communication)

FT PT

Immunology and Immunogenetics
 MSc/PgDip

FT PT DL

Molecular Parasitology and Vector
 Biology MSc/PgDip

FT PT

Neuroscience MSc/PgDip

FT

Plant Science MSc/PgDip

FT

Structural Biology and Biophysics
 MSc/PgDip

FT

faculty of medical and human sciences



Our research

Postgraduate opportunities across the Faculty span a broad spectrum of biomedical and health-related research, with further opportunities for cross-faculty learning and research.

Our performance in the 2008 Research Assessment Exercise reflects the Faculty's strength across diverse biomedical and clinical research areas, from laboratory-based investigations, to studies of the impact of discoveries on the population's health. Research achievements are underpinned by an extensive network of world-class researchers and support staff, who tackle important research questions using interdisciplinary approaches.

Cutting-edge facilities are enjoyed by the Faculty: for example, the School of Nursing, Midwifery and Social Work recently moved into a new building, as have many of the Medical School research teams. The new Central Manchester hospitals complex will bring together the services of five hospitals and will provide further research and clinical facilities close to the University campus.

We have an exceptionally high quality of health sciences research and a strong track record of partnership working with the NHS and other major healthcare organisations, providing a wealth of opportunities for postgraduate research.

We look forward to welcoming and developing your abilities, commitment and experience as a postgraduate student in the Faculty of Medical and Human Sciences.

www.manchester.ac.uk/mhs

Centres of excellence

Manchester Academic Health Science Centre (MAHSC)

- Partnership between the University and six Greater Manchester NHS organisations, established in 2008, which aims to help the city-region become a world leader in health research
- The only such UK centre to cover the full spectrum of care: acute, specialist, mental health, primary and commissioning

- Aims to interconnect Manchester's existing research activity and partnerships, expand our integrated approach to research, implement research findings and support innovation in healthcare practice
- Aims to generate health benefits, economic development, enterprise, innovation and wealth creation in the region

Collaboration for Leadership in Applied Health Research and Care (CLAHRC)

- One of seven in England selected by the National Institute for Health Research to generate a step change in the quality of NHS care through knowledge transfer between a leading university and its surrounding NHS Trusts

Manchester Cancer Research Centre

- Unites the expertise, ambition and resources of partner organisations with formidable reputations in cancer treatment and clinical research
- Researchers and clinicians work together in outstanding facilities to learn more about how cancer develops, then translate findings into new diagnostic tests and treatments for patients

Biomedical Research Centre (BRC)

- Partnership between the University and the Central Manchester University Hospitals NHS Foundation Trust
- One of 12 Department of Health centres of excellence, with a funding package of £35m
- Includes projects that aid our understanding of health, development and disease for various conditions (eg cardiovascular disease, mental health), to develop new therapies and alleviate chronic long-term disability

Biomedical Imaging Institute

- A hub for interdisciplinary activity across the University, encouraging the use of multi-modal imaging techniques, the development of new imaging methods and the integration of pre-clinical and clinical imaging
- Members are renowned for their expertise in neuro- and cancer-imaging, PET and MRI methodology, and image analysis

Institute of Health Sciences

- Promotes health sciences research and postgraduate education across the University and our partner NHS Trusts

Neuroscience Research Institute

- Unites researchers from science, engineering and medicine, allowing free-flowing interchange between basic and clinical studies, and thereby seamless integration of bench-to-bedside research

Manchester: Integrating Medicine and Innovative Technology

- The first international affiliate of the highly successful US centre CIMIT®
- Clinicians and scientists (including engineers) devise mechanisms based on the latest technology to solve clinical problems

National Primary Care Research and Development Centre

- A multidisciplinary, academically independent centre established at the University by the Department of Health
- Undertakes policy-related research in primary care

North West Genetic Knowledge Park (Nowgen)

- Houses clinicians, scientists and communicators dedicated to applying research in medical genetics and social sciences to benefit patients and society

Centre for Integrated Genomic Medical Research

- Hosts the UK DNA Banking Network, allowing researchers to search for the genes behind a range of chronic diseases

UK Biobank

- Multimillion pound project hosted by the University to improve knowledge of life-threatening and debilitating diseases in the UK
- Currently recruiting a target of 500,000 people aged 40 to 69 in order to track their health over the next 30+ years

MHS stats

£56 million predicted research income
2,000+ postgraduate students

student profile

Name Taiji Ueno
Age 29
From Kyoto, Japan
Degree PhD, Neuroscience
Graduates 2011



Why did you choose your degree?

"The more I studied experimental psychology when I was a masters student at Kyoto University in Japan, the more I felt I needed to study the organisation and the function of the human brain. Both the behavioural paradigms and the neuropsychological paradigms are mutually interplaying with each other in the front lines of the academic field. This is why I chose Neuroscience as an extension of my PhD in Experimental Psychology."

Why Manchester?

"When I was working in Kyoto University, Professor Matt Lambon Ralph (Manchester) visited Kyoto and gave an invited lecture. I was profoundly fascinated by his talk, his research interests and his personality. What is more, it was generous and kind of him to suggest the possibility for me to study neuroscience under his supervision. This is the most important reason why I chose Manchester."

What do you think of your course?

"It is well organised and carefully monitored. There are enough resources so that we can acquire more skills than I had expected. For example, there are some workshops for neuroimaging methodologies and for computational modelling. Also, we have close links with people in the clinical field, through which we can both study neurology and consider how to put our theories into practice."

"Staff are really supportive and full of insights both on academic issues and private issues. They have helped me a lot with acquiring new skills, learning English, and making a comfortable life abroad."

How do you think studying here will help your prospects?

"I am developing my English skills to lead to an international collaboration study in the future. Given that the high-profile journals are written in English, this will strongly affect my future."

"Through the acquisition of various kinds of research skills, I will also be able to work with people from various kinds of domains."

"I have attended a CV workshop [at the Careers Service]. I think an effective CV in the UK looks quite different from that in Japan because of cultural differences. I learned how to show my skills and personality effectively and positively."

What do you most value about studying here?

"Without any doubts, I cherish the friends whom I have so far met here: PhD friends in the department, housemates in the international house, and the friends I met outside Manchester (conferences/meetings/travel, etc). They have soothed my homesickness and taught me many joyful aspects of UK life."

researcher profile

Name Dr Cath O'Neill
Job title Lecturer in Clinical Biochemistry/
 Director of Postgraduate Education
School Translational Medicine



What are your specialist areas of interest?

"Epithelia are cell layers that separate different body compartments. The skin is an epithelium, which separates our entire body from the environment. Epithelial cells adhere to each other via adhesive complexes called junctions. My lab is interested in the part of the junction called the 'tight junction'. This uniquely controls the movement of molecules across epithelia. In the skin this is hugely important, because skin is exposed daily to millions of bacteria. The tight junction makes sure potential pathogens can't cross the epithelia and access the circulation. We are particularly interested in how tight junctions alter in disease, particularly inflammatory disease."

What are you currently working on?

"I am looking at how tight junctions change in the inflammatory skin condition, psoriasis, and at how tight junctions in skin respond to UV light. Finally, I am looking in the gut at how molecules that regulate tight junctions might be useful therapies for inflammatory bowel disease."

Why is Manchester good for your research?

"Manchester has a long history of work on the epithelium, not only in Medicine, but also in the Faculty of Life Sciences, where I currently collaborate with several people. The creation of the new 'epithelial sciences' research group brings together people working in different epithelia and allows us to share ideas, techniques, etc."

What relevant facilities and resources does Manchester have?

"We have excellent microscope facilities and lots of expertise in molecular biology and epithelial transport. I work in close collaboration with dermatologists for my skin epithelial studies – Manchester has an excellent reputation for dermatology and is a great place to do studies involving patients."

How does your research benefit postgraduates?

"Epithelia are at the interface between humans and our environment. My research informs teaching, particularly of physiology and cell biology courses. Some of the skills we have developed have applications in other areas of study, as does some of our equipment, which is available to students from other groups."

What makes the Faculty of MHS a great place for postgraduate study?

"There is a lot of choice in courses and something to suit everyone. Alongside individual research projects, FMHS offers a comprehensive generic skills training programme, covering such things as presentation skills, academic writing, statistical analysis, time management, research methods etc."

"Manchester is one of the top universities in Europe, hence students can be assured that they will work with the national leaders in their research fields."



Dentistry

PROFILE

41 Teaching staff
22 Research staff
72 Taught postgraduates
29 Research postgraduates
RAE **4*30% 3*45% 2*25% 1*0%**

Rated the best dental school for research in the 2008 UK RAE, the School of Dentistry has an international reputation for research, from developmental biology to clinical trials and systematic reviews.

An ever-expanding portfolio of specialist dental courses also provides clinically directed training across an array of disciplines. Our innovative, fully integrated four-year Clinical PhD combines academic research with assessed clinical experience.

We have adopted a research structure with the mission of 'Understanding the Scientific Basis of Craniofacial and Oral Health', divided into two research themes: Basic Sciences and Health Sciences. Basic Sciences aims to improve craniofacial health by enhancing our understanding of the mechanisms underlying health and disease and developing better dental materials. Health Sciences focuses on dental health, contributing to knowledge of evidence-based health provision.

Find out more

www.manchester.ac.uk/dentistry

pg-dentistry@manchester.ac.uk
tel +44 (0)161 306 0239

Research programmes

Basic Dental Science
(Cancer Studies) PhD/MPhil
FT PT
Basic Dental Science
(Molecular Genetics) PhD/MPhil
FT PT
Basic Dental Science
(Stem Cell Biology) PhD/MPhil
FT PT

Biomaterials Science and
Dental Technology PhD/MPhil
FT PT

Dental Public Health/ Community
Dentistry PhD/MPhil

FT PT
Endodontology PhD/MPhil
FT PT

Integrated Clinical PhD
FT PT

Operative Dentistry PhD/MPhil
FT PT

Oral and Maxillofacial Surgery
PhD/MPhil

FT PT
Oral Radiology PhD/MPhil
FT PT

Orthodontics PhD/MPhil
FT PT

Prosthodontics PhD/MPhil
FT PT

Restorative Dentistry PhD/MPhil
FT PT

*Contact us to find out about other
research degrees.*

Taught courses

Dental Implantology
MSc/PgDip/PgCert
PT
Dental Public Health
MDPH/MRes/PgDip/PgCert
PT FT DL

Endodontics MSc/Clinical Dentistry
(Endodontics) MSc
FT

Endodontics PgDip
PT

Fixed and Removable
Prosthodontics MSc

FT PT
Clinical Dentistry (Fixed and
Removable Prosthodontics) MSc
FT

Oral and Maxillofacial Surgery
MSc/PgDip

FT PT
Clinical Dentistry (Oral and
Maxillofacial Surgery) MSc
FT

Clinical Dentistry (Orthodontics) MSc
FT

Restorative and Aesthetic Dentistry
MSc
PT DL

Humanitarianism and Conflict Response

Research programmes

Humanitarianism and Conflict
Response PhD **FT PT**

Taught courses

Humanitarianism and Conflict
Response MA **FT PT**

Find out more

*For details, see Manchester
Doctoral College, page 98*

Medicine

PROFILE

654 Teaching and research staff
1,004 Taught postgraduates
414 Research postgraduates
Selected RAE returns:
Cancer Studies
RAE **4*15% 3*60% 2*25% 1*0%**
Cardiovascular Medicine
RAE **4*30% 3*60% 2*10% 1*0%**
Pre-Clinical and Human
Biological Sciences
RAE **4*20% 3*45% 2*35% 1*0%**
Primary Care and Other
Community-Based Clinical
Subjects
RAE **4*40% 3*40% 2*15% 1*5%**

The School of Medicine comprises five Schools reflecting emerging biomedical priorities: BioMedicine, Cancer and Enabling Sciences; Community-Based Medicine; Translational Medicine; and Manchester Medical School. More students graduate each year from our School than from any other medical school in the UK.

Key
FT full-time
PT part-time
DL distance learning

Research Assessment Exercise % of research activity judged to be:

4* world leading **2*** internationally recognised
3* internationally excellent **1*** nationally recognised

In partnership with Greater Manchester NHS Trusts, the School is one of Europe's largest, boasting innovative teaching and research approaches, and acting as a leading international medical centre. The creation of the Manchester Academic Health Science Centre (MAHSC) has further strengthened our emphasis on 'bench to bedside' research and discovery science.

With stimulating research and learning environments, our Research Schools offer diverse postgraduate opportunities to scientists, clinicians and the healthcare community. These range from fundamental biological sciences, through to clinical and health services research involving emerging social and economic issues. Postgraduate and Continuing Professional Development training allows you to gain professionally recognised qualifications in specialist areas, explore research interests with a view to moving onto a PhD, or simply gain valuable experience to enhance your career prospects.

Research training spans the entirety of the basic and applied sciences. Some of our PhD researchers investigate the origin of diseases at the molecular, cellular and genetic level. Others focus at organ or tissue level, translating such laboratory-based studies to patient care, while others consider the effects of interventions on populations rather than on individuals. Technological and computational approaches deliver research at the interface of the scientific disciplines, resulting in groundbreaking discoveries about medical disorders or the molecular mechanisms of the living cell.

All postgraduate research students attend our popular graduate skills training programme, to maximise their research potential and gain an edge in career progression into academia, healthcare, or industry.

Find out more www.manchester.ac.uk/medicine

pg-medicine@manchester.ac.uk
tel +44 (0)161 275 5688
fax +44 (0)161 275 1432

Research programmes (in key subject areas listed below)

Medicine MPhil
FT PT
Medicine PhD
FT PT
MD
FT PT
ChM
FT PT
Cancer Studies
Cardiovascular
Developmental Biomedicine
Epithelial Sciences
Health Sciences
Imaging, Genomics and Proteomics
Mental Health and Neurodegeneration
Musculoskeletal
Respiratory

For more information on research training opportunities, please see our website. Research study applicants should select PhD/MD/MPhil Medicine initially and provide detail on your proposed study area, or academic supervisor.

Doctoral Training Centre programmes*

Humanitarianism and Conflict Response
FT PT
Integrative Systems Biology
FT
Nanoscience
FT

**For further details, see Manchester Doctoral College pages 96-99*

Taught courses

Applied Mental Health MSc/PgDip
PT

BioHealth Informatics MSc* (with the School of Computer Science)
FT PT

Biostatistics MSc
(with the School of Mathematics)
FT

Cardiovascular Sciences MRes
FT

Clinical Biochemistry MSc
FT PT

Clinical Rheumatology MSc
PT

Genetic Counselling MSc
FT

Health Care Ethics and Law MA/PgDip (with the School of Law)
FT PT

Investigative Ophthalmology and Vision Science MSc
FT PT

Maternal and Fetal Health MRes
FT

Medical and Diagnostic Virology MSc
FT PT

Medical and Molecular Microbiology MSc/PgDip
FT PT

Medical Sciences MRes
FT

Occupational Hygiene MSc/PgDip
DL

Occupational Medicine MSc/Advanced PgDip
DL

Physics and Computing in Medicine and Biology MSc/PgDip
FT PT

Primary Care MRes
DL

Psychiatry MSc/PgDip
PT

Public Health MPH/PgDip/PgCert
DL

Public Health MRes
DL

Tissue Engineering for Regenerative Medicine MRes
FT

Translational Medicine MRes/PgCert
PT FT

Work Based Medical Education MSc/PgDip/PgCert
PT

Nursing, Midwifery and Social Work

PROFILE

132 Teaching staff
49 Research staff
269 Taught postgraduates
61 Research postgraduates
£2.6 million research income
RAE 4*50% 3*35% 2*10% 1*5%

A recognised international leader in research and education, the School of Nursing, Midwifery and Social Work offers you diverse academic study opportunities in line with the pace of change in health and social care. We ranked number one for nursing and midwifery research in the 2008 UK RAE, entering the highest number of research-active staff in these disciplines. Our high-quality, applied research aims to provide evidence to improve patient care and shape health and social care services. With the largest research portfolio of such schools in the UK, we attract considerable funding and output in renowned journals.

Strong links with the School of Psychological Sciences, the Institute of Health Sciences and the Manchester Academic Health Science Centre provide ample opportunities for multidisciplinary research. Our research programmes are consistently highly commended in external reviews, while developing several practice-focused, multi-professional courses has further enhanced our reputation in taught study. Underpinned and informed by our research activity and expertise, we offer high-quality, evidence-based, innovative multi-professional programmes that meet professional body requirements where appropriate. Specialist education ranges from developing

professionals for existing, new and advanced roles in health and social care, to enhancing clinical, health and social care research through training courses.

Postgraduate research students are an integral part of our success and receive extensive research training in transferable skills – strong foundations for a career as an investigator and scholar. Excellent training in research methods, together with the opportunity to work with internationally acclaimed academics and practitioners, mean that you will be well equipped to contribute to leading health and social care research. Our well-established Distributed (Online) Learning PhD/MPhil and new online MRes courses are further innovative developments in high quality research training.

The School occupies a new, state-of-the-art building designed with the needs of researchers and graduate students in mind. Our outstanding learning facilities include seminar rooms, high-specification clinical and interpersonal skills laboratories, a dedicated student computer suite and full wireless access.

University facilities in general are excellent, with one of the best library collections and resources in Europe, including an extensive range of health and social care books and journals, as well as diverse related subjects. Many online resources can be accessed off-site.

Find out more

www.manchester.ac.uk/nursing
graduate.nursing@manchester.ac.uk
tel +44 (0)161 306 0270

Research programmes

Nursing MPhil/PhD
FT PT DL
Social Work MPhil/PhD
FT PT DL

We particularly welcome postgraduates interested in health/social care research topics including: mental health; management of chronic illness; cancer, supportive and palliative care; child and family health; and social care.

Taught courses

Advanced Nursing Studies
PgDip/MSc FT PT
Advanced Practice Interventions
for Mental Health (APIMH)
PgDip/MSc*
PT

Pathways in:

- Primary Mental Health Care
- Dementia Care
- Psychosocial Interventions for Psychosis (COPE)

Clinical Research PgDipClin
Res/MClin Res*

FT PT DL

Health and Social Care Research
PgDip Res/MRes HSC

FT PT DL

Social Work MA

FT

**A number of funded studentships are available on these courses – for further information, see the School website.*

Pharmacy and Pharmaceutical Sciences

PROFILE

130 Teaching and research staff
137 Taught postgraduates
75 Research postgraduates
RAE 4*30% 3*40% 2*25% 1*5%

The School of Pharmacy and Pharmaceutical Sciences has long been internationally renowned for research, and we are also proud of



Key
FT full-time
PT part-time
DL distance learning

Research Assessment Exercise % of research activity judged to be:

4* world leading **2*** internationally recognised
3* internationally excellent **1*** nationally recognised

our teaching, translating excellence in basic science into professional training and continuing education in pharmacy.

We recently transferred to a new £18 million research site, offering facilities unrivalled within the UK. Basic physical and biological sciences research is allied to pharmacy disciplines to equip you for research and/or careers in academia, pharmaceutical and related industries, or clinical and retail pharmacy. We also house the National Centre for Pharmacy Postgraduate Education, providing continuing professional development to all 18,500 community pharmacists in England.

We aim to improve the design, development and use of medicines across our core research groups: Drug Delivery and Pharmacokinetics, Drug Design and Action, and Drug Usage and Pharmacy Practice. PhD students are at the forefront of our research, from discovering new biological targets for drugs and diagnostics, to designing sophisticated drug delivery agents. Our effective multidisciplinary skills training enhances your research potential, whatever your career aspirations.

Find out more
www.manchester.ac.uk/pharmacy
 pharmgrad@manchester.ac.uk
 tel +44 (0)161 306 0259

Research programmes

Pharmacy and Pharmaceutical Sciences MPhil/PhD
FT PT

Taught courses

Clinical and Health Services Pharmacy MSc/PgDip
PT
 Pharmaceutical Industrial Advanced Training MSc/PgDip/PgCert
DL

See also *Nanoscience (under Manchester Doctoral College)*

Psychological Sciences

PROFILE

65 Teaching staff
 50 Research staff
 159 Taught postgraduates
 137 Research postgraduates
 Psychiatry, Neuroscience and Clinical Psychology
 RAE **4*5%** **3*45%** **2*40%** **1*10%**
 Psychology
 RAE **4*10%** **3*35%** **2*45%** **1*10%**

Our School of Psychological Sciences is a vibrant centre of research and teaching. Postgraduate and professional development opportunities span numerous areas, including audiological sciences, cognitive neuroscience and speech and language therapy. We aim to offer unrivalled, comprehensive training focusing upon the latest developments in psychological sciences.

As well as our hugely successful Clinical Doctorate in Psychology, we offer professionally directed training in Audiology, while the Masters by Research (MRes) in Psychology prepares individuals for research careers or PhD study. Our research training focuses on developing the next generation of clinical and academic leaders. Delivered via recognised centres of excellence, PhD training combines specialist expertise with critical, transferable skills to provide foundations for a career in academia or clinical settings.

We host the Max Planck Child Study Centre: a globally renowned

research group exploring children's early language acquisition. The Neuroscience Research Institute has also strengthened cross-disciplinary studies into neurodegenerative conditions.

With excellent access to multidisciplinary research environments that link basic, clinical and applied levels of psychological research, our PhD students are key to the research output of our groups, delivering seminars, attending conferences and collaborating on prestigious publications. Research activities are currently organised into five Research Groups: Audiology and Deafness; Clinical and Health Psychology; Clinical Neuroscience and Language Disorders; Cognition and Cognitive Neuroscience; and Language and Communication.

Find out more
www.manchester.ac.uk/psych-sci
 pg-psychology@manchester.ac.uk
 tel +44 (0)161 275 2585

Research programmes

Audiology MPhil/PhD
FT PT
 Clinical Psychology MPhil/PhD
FT PT
 Clinical Psychology Doctorate
 ClinPsyD
FT
 Psychology MPhil/PhD
FT PT

Taught courses

Audiology MSc/PgDip
FT
 Clinical and Health Psychology MSc
FT
 Cognitive Brain Imaging MSc
FT
 Deaf Education PgDip
FT PT DL
 Psychology MRes
FT PT



manchester doctoral college

Cross-Faculty doctoral training

Over recent years, The University of Manchester has established a number of Centres for Doctoral Training (CDTs), which complement existing Faculty PhD programmes and provide a focus for cross-disciplinary studies.

Given the multidisciplinary nature of these CDTs, the University established the Manchester Doctoral College (MDC) in 2008 in order to provide a flexible, coordinating structure that aims to give internal coherence and external visibility to the centres.

Why study at MDC?

The College hosts a number of different CDTs that you could study at, each of which involves:

- Commitment to interdisciplinarity
- A four-year research programme with integrated taught components
- A doctoral dissertation meeting international standards of excellence
- Integration into world-class research teams
- The chance to share research development as part of a cohort of fellow doctoral students

* Please be aware that the postgraduate study options highlighted within the CDTs are all subject to availability. For the most up-to-date information, see www.manchester.ac.uk/mdc

Key

FT full-time

PT part-time

DL distance learning

Advanced Metallic Systems Centre for Doctoral Training

The Advanced Metallic Systems CDT, hosted jointly by the Universities of Manchester and Sheffield, provides an exciting new approach to postgraduate research and training in metallic materials.

High-calibre students from a range of physical science and engineering backgrounds undertake a four-year programme, comprising a first year of taught courses and case studies in core materials topics, leading into a full PhD research project developed by the student with their supervisor. Most PhD projects will be supported by industrial sponsorship and supervision.

The technical programme is supplemented by a transferable skills training programme, leading to a Diploma in Professional Skills, preparing you for future management and leadership roles in industry and research.

What could you be working on?

New ultra-lightweight, high-performance solutions for aerospace and automotive applications; novel corrosion-resistant materials for offshore energy generation and medical implants; the next generation of nuclear reactor materials; innovative and sustainable manufacturing.

Find out more

www.metallicscdt.co.uk

tel +44 (0)114 222 5478

Research programme

Advanced Metallic Systems PhD
FT

Engineering Doctorate Centre in Engineering for Manufacture

The EngD Centre manages the structure, content and delivery of the Engineering Doctorate in 'Engineering for Manufacture'. This is an intensive, but broadly-based postgraduate research programme run in collaboration with manufacturing industry, ranging from construction, electronics, power generation, paper and packaging, textiles, chemicals and pharmaceuticals, through to aerospace engineering and new materials.

Programme structure

The programme comprises four elements: a doctoral-level, industry-focused research project; a Diploma in Enterprise Management; taught technical course units; and a professional development programme. Students (Research Engineers) are normally based within their sponsoring company.

We were the first EngD Centre to be approved as an accredited training provider by professional institutions (IMechE and IET), allowing rapid mentored progression for many of our students to CEng. Research Engineers in other disciplines are also supported in seeking Chartered status.

Find out more

www.manchester.ac.uk/engd

tel +44 (0)161 306 4157

Research programme

Engineering for Manufacture EngD
FT

Engineering Doctorate Centre in Nuclear Engineering

The Engineering Doctorate Centre in Nuclear Engineering was formed in 2006 and involves a consortium of UK universities, led by The University of Manchester in partnership with Imperial College London.

The primary objective of the Nuclear EngD is to provide outstanding young nuclear Research Engineers with intensive, broadly based training in collaboration with industrial companies, so that they are equipped to take up senior roles within the nuclear industry.

In addition to obtaining a high quality qualification, you will gain experience of working in an industrial research and development environment. This four-year programme involves you being based within an industrial company in the UK.

Programme structure

The programme comprises four elements: a doctoral-level research project, or portfolio of projects; a diploma in Enterprise Management; taught technical course units; and a professional development programme.

Find out more

www.manchester.ac.uk/engd

tel +44 (0)161 275 4338

Research programme

Nuclear EngD
FT

Humanitarianism and Conflict Response Institute

The Humanitarian and Conflict Response Institute (HCRI) is driven by a desire to inform and support policy and decision makers, to optimise joint working between partner organisations, and to foster increased understanding and debate within the field of humanitarianism.

Bringing together the disciplines of medicine and the humanities to achieve these aims, the HCRI will facilitate improvements in crisis response on a global scale while providing a much needed centre of excellence for all concerned with emergencies and conflicts.

Led by the former President of Médecins Sans Frontières, Dr Rony Brauman, we aim to combine the research and teaching of academics working in a considerable variety of disciplines to offer an exceptionally diverse learning environment.

Specifically, our masters and doctoral programmes will uniquely focus on responses to crises originating from both conflict zones and natural disasters. Bringing together the study of medicine and humanities provides a holistic approach, which mirrors the reality of aid operations and informs the reflexive processes of both analytical and applied disciplines.

Find out more

www.hcri.ac.uk

www.manchester.ac.uk/history

rebecca.whitehead@manchester.ac.uk
tel +44 (0)161 275 8967

Research programme

Humanitarianism and Conflict Response PhD
FT PT

Taught course

Humanitarianism and Conflict Response MA
FT PT

Integrative Systems Biology Centre for Doctoral Training

Although we have an excellent understanding of biological molecules and how they function, we have not yet been successful in understanding how healthy and disease processes occur in whole organisms, nor in making organisms produce what we need for a better planet. Recent discoveries show why: the functions of 'Life' depend more on networking than on individual molecules, and we have yet to fully understand these complex networks.

Accordingly, industry and academia require a new generation of scientists who are inspired by the 'Networks of Life'. The Doctoral Training Centre for Integrative Systems Biology offers a four-year, multidisciplinary PhD training programme in which groups of students study various subjects and techniques required to understand and research the 'Networks of Life'.

You will engage in an interdisciplinary research project chosen from topics such as multifactorial diseases (eg diabetes, cancer); the dynamics of living cells responding to signals of stress; and synthetic biology, making new functions of life.

Find out more

www.manchester.ac.uk/mib/postgraduate/DTC

tel +44 (0)161 306 5188

Research programme

Integrative Systems Biology PhD
FT

North West Nanoscience Centre for Doctoral Training

NOWNANO builds on the world-leading expertise in all nanoscience within Manchester and Lancaster universities to offer a broad, interdisciplinary doctoral training centre.

PhD students will receive initial training that will show them the breadth and potential of nanoscience, before you focus on mastering one specific area of the subject.

Throughout the research training, the cohort will meet and discuss their research, building a group of outstanding scientists that will help to lead world research in nanoscience in the future.

Key features of the programme

- Research in which you develop interdisciplinary skills
- Choice of experimental, theoretical and computational projects
- Topics include: synthesis, fabrication, characterisation and modelling of nanomaterials; experimental and theoretical physics of nanodevices; and tissue engineering in medicine
- Applications of nanotechnology in solar cells, data storage, imaging, photonics, drug delivery

Key**FT** full-time**PT** part-time**DL** distance learning

- Six-month training course in core research techniques, including two mini-projects in a choice of labs
- Based in state-of-the-art nanoscience laboratories

Find out more

www.nownano.manchester.ac.uk/index.html

tel +44 (0)161 275 1887

Research programme

Nanoscience PhD

FT

Nuclear FiRST Centre for Doctoral Training

Nuclear FiRST aims to underpin UK energy strategy by addressing the growing doctoral skills gap in nuclear fission science and engineering. It is a partnership between The University of Manchester and The University of Sheffield.

We are adopting a radically different approach to PhD study, combining a masters-level foundation year with a three-year doctoral-level thesis project.

Our DTC training programme provides you with an exciting and interdisciplinary approach to postgraduate research training, in a high quality and professional research environment.

Key features of the programme

- Research in which you develop interdisciplinary skills
- First year dedicated to you acquiring a broad knowledge of nuclear science and the fuel cycle, through MSc-level course units

- Opportunity to undertake two 'taster' research projects, to enable you to make an informed choice of PhD topic
- Training in professional skills and project placements in industry or research institutions in the UK and overseas
- Access to world-class facilities at both The University of Manchester and University of Sheffield

Nuclear FiRST welcomes applications from graduates who have, or expect to obtain, a good degree (First class or Upper Second) in a relevant discipline, such as chemistry, physical, materials, earth or environmental sciences, or an appropriate branch of engineering.

Find out more

www.nuclearfirst.manchester.ac.uk

tel +44 (0)161 275 1887

Research programme

Nuclear FiRST PhD

FT

Sustainable Consumption Institute

The Sustainable Consumption Institute (SCI) is a multidisciplinary centre of global excellence, researching major national and international issues associated with sustainability and encouraging consumers to adopt more sustainable lifestyles.

The SCI aims to:

- Draw on expertise from across the University's four faculties
- Provide a hub to bring together global expertise, with specific research programmes

commissioned at Manchester, but also at other leading world centres

- Focus on four research themes: sustainable consumer behaviour and lifestyle, sustainable production and distribution, climate change and carbon, and making development more sustainable
- Provide a focal point for the training of the next generation of researchers, policy-makers and advisors in the public and private sectors in the area of sustainable consumption, through an extensive training programme for postgraduate students

The SCI was set up against the background of the global threat from climate change and the economic benefits of early action highlighted by the Stern Review.

Please contact us to find out what study opportunities we will be offering in 2011.

Find out more

www.manchester.ac.uk/sci

tel +44 (0)161 275 7864

index

A

Accounting and Finance MSc	73
Actuarial Science PhD/MPhil/MSc	52, 53
Adaptive Organismal Biology PhD/MPhil	87
Advanced Aerospace Materials Engineering MSc by Res	51
Advanced Chemical Engineering MSc/PgDip/PgCert	47
Advanced Chemical Process Design MSc/PgDip/PgCert	47
Advanced Computer Science (ACS) MSc	48
Advanced Computer Science and IT Management MSc	48
Advanced Control and Systems Engineering MSc	51
Advanced Engineering Materials MSc/PgDip/PgCert	52
Advanced Manufacturing Technology and Systems Management MSc	54
Advanced Metallic Systems PhD	52, 97
Advanced Nursing Studies PgDip/MSc	94
Advanced Practice Interventions for Mental Health (APIMH) PgDip/MSc	94
Advanced Process Design for Energy MSc/PgDip/PgCert	47
Aerospace Engineering PhD/MPhil/MSc by Res/MSc	54
American Studies (History) MA	66
American Studies (Literature and Culture) MA	66
Analytical Science PhD/MPhil	46
Analytics: Operational Research and Risk Analysis MSc	73
Animal Biology PhD/MPhil	87
Anthropological Research MA	78
Anthropology, Media and Performance PhD	xx
Applied Linguistics MA/PgDip	72
Applied Mathematics PhD/MPhil/MSc by Res	52
Applied Mental Health MSc/PgDip	93
Applied Numerical Computing PhD/MPhil	52
Applied Social Research MA/PgDip	80
Applied Theatre Professional Doctorate/MA	63
Arab World Studies PhD/MA/Integrated MA-PhD	74
Arabic Studies MA	74
Archaeology PhD	60
Archaeology (various specialisms) MA	60
Architecture MPhil/PhD	61
Architecture and Urbanism MA	61
Art Gallery and Museum Studies MA	74
Art History MA	57
Art History and Visual Studies PhD	57
Arts and Cultural Management Professional Doctorate	62
Arts Management and Cultural Policy PhD	62
Arts Management, Policy and Practice MA	62
Astronomy and Astrophysics EntD/PhD/MSc by Res/MEnt	55
Atmospheric Sciences PhD/MPhil/MSc by Res	49
Audiology MPhil/PhD/MSc/PgDip	95

B

Basic Dental Science (various specialisms) PhD/MPhil	92
Basin Studies and Petroleum Geoscience PhD/MPhil/MSc by Res	49

Biocatalysis PhD/MPhil	46
Biochemistry PhD/MPhil/MSc/PgDip	87
Bioethics and Medical Jurisprudence PhD	71
BioHealth Informatics MSc	93
Bioinformatics PhD/MPhil/MSc/PgDip	87
Biological Chemistry PhD/MPhil	47
Biological Sciences MRes (including Integrative Mammalian Biology)	87
Biomaterials Science and Dental Technology PhD/MPhil	92
Biomechanics MSc/PgDip	87
Biomedical and Forensic Studies in Egyptology MSc/PgDip	87
Biomedical Materials PhD/MPhil/MSc by Res	51
Biomolecular Science PhD/MPhil	87
Biostatistics MSc	53, 93
Biotechnology PhD/MPhil/MSc/PgDip/PgCert	47, 87
Biotechnology and Enterprise MSc/PgDip	87
Business Administration DBA/MBA	73
Business Administration for The Manchester Global MBA	73
Business and Management PhD/MPhil/MRes/MEnt/EntD	73

C

Cancer Biology MSc/PgDip	87
Cancer Studies MPhil/PhD/MD/ChM	93
Cardiovascular MPhil/PhD/MD/ChM	93
Cardiovascular Sciences MRes	93
Cell Biology PhD/MPhil/MSc/PgDip	87
Cell Matrix Research PhD/MPhil	87
Ceramics and Glasses PhD/MPhil/MSc by Res	51
Channels and Transporters PhD/MPhil	87
Chemical Engineering PhD/MPhil	46
Chemical Engineering and Analytical Science PhD/MPhil/MEnt/EngD/EntD/Integrated PhD	46
Chemical Engineering with Design MSc/PgDip/PgCert	47
Chemistry EngD/EntD/MSc by Res/PhD/MPhil/MEnt/MSc/PgDip/PgCert	47
Chinese Business and Management MSc	73
Chinese Studies PhD/MPhil	64
Civil Engineering PhD/MPhil/MSc by Res	54
Classics and Ancient History PhD/MA	62
Clinical and Health Psychology MSc	95
Clinical and Health Services Pharmacy MSc/PgDip	95
Clinical Biochemistry MSc	93
Clinical Psychology MPhil/PhD/Doctorate ClinPsyD	95
Clinical Research PgDip/Clin Res/MClin Res	94
Clinical Rheumatology MSc	93
Cognitive Brain Imaging MSc	95
Colloids, Crystals, Interfaces and Materials PhD/MPhil	46
Communication Engineering MSc	51
Composite Materials PhD/MPhil/MSc by Res	51
Composition MusM	75
Computational Neuroscience MSc/PgDip	87

Computer Science PhD/MPhil/MEnt/Foundation	48	Educational Technology and TESOL MA	65
Conference Interpreting MA/PgDip	81	Egyptology PhD/MPhil	87
Constructions of the Sacred, the Holy and the Supernatural MA	57	Electrical and Electronic Engineering PhD/MPhil/Split-site PhD/Collab PhD/MSc by Res/EntD/MEnt/EngD	50
Contemporary China MA	64	Electrical Energy Conversion Systems MSc	51
Contemporary Literature and Culture MA	63	Electrical Power Systems Engineering MSc	51
Corporate Communications and Reputation Management MSc	73	Electroacoustic Music Composition MusM	75
Corporate Governance LLM	71	Endodontics MSc/MSc (Clin)/PgDip	92
Corrosion and Protection PhD/MPhil/MSc by Res	51	Endodontology PhD/MPhil	92
Corrosion Control Engineering MSc/PgDip/PgCert	52	Engineering for Manufacture EngD	46, 47, 51, 52, 54, 55, 73, 97
Counselling MA	65	English and American Studies PhD/MA	66
Counselling Psychology Doctorate DCouns	65	English Language PhD/MA	72
Creative Writing PhD/MA	63	Environment and Sustainable Technology PhD/MPhil/MSc/PgDip/PgCert	46, 47
Crime, Law and Society MA	63	Environmental Biology PhD/MPhil	87
Criminology MPhil/PhD	63	Environmental Engineering PhD/MPhil	54
Criminology and Socio-Legal Studies MRes	63	Environmental Geochemistry and Geomicrobiology PhD/MPhil/MSc by Res	49
Cultural History MA	68	Environmental Governance MSc	68
D		Environmental Impact Assessment & Management MA	76
Deaf Education PgDip	95	Environmental Monitoring, Modelling and Reconstruction MSc	68
Dental Implantology MSc/PgDip/PgCert	92	Epithelial Sciences MPhil/PhD/MD/ChM	93
Dental Public Health/Community Dentistry PhD/MPhil	92	Ethnographic Documentary MPhil	78
Dental Public Health MRes/MSc/PgDip/PgCert	92	European Languages and Cultures: Culture and Dictatorship MA	67
Development Economics and Policy MSc	69	European Languages and Cultures: Cultures of Migration, Diaspora and Exile MA	67
Development Finance MSc	69	European Languages and Cultures: French Studies MA	67
Development Policy and Management MPhil/PhD	69	European Languages and Cultures (Generic) MA	67
Development Studies (inc Research Training option) MA	69	European Languages and Cultures: German Studies MA	67
Developmental Biology PhD/MPhil/MSc/PgDip	87	European Languages and Cultures: Holocaust Studies MA	67
Developmental Biomedicine MPhil/PhD/MD/ChM	93	European Languages and Cultures: Italian Studies MA	67
Digital Biology MSc	49	European Languages and Cultures: Literature and Ideas in the 18th and 19th Centuries MA	67
Digital Image and Signal Processing MSc	51	European Languages and Cultures: Medieval and Renaissance Studies MA	67
Digital Technologies, Communication and Education MA	65	European Languages and Cultures: Russian and East European Cultures and Societies MA	67
Drama PhD	63	European Languages and Cultures: Sexuality and Gender Studies MA	67
E		European Languages and Cultures: Spanish, Portuguese and Latin American Studies MA	67
e-Business Technology MSc	73	European Law and Governance LLM	71
e-Government MSc	73	Evolutionary Biology PhD/MPhil	87
Early Modern History MA	68	Evolutionary Genetics and Genomics MSc/PgDip	87
Earth, Atmospheric and Environmental Sciences PhD/MPhil/MEnt/MSc by Res/EntD	49	F	
East Asian Studies PhD/MPhil	64	Fashion Technology MSc by Res	51
Econometrics MSc	65	Finance MSc	73
Economic and Social History MA	68	Finance and Business Economics MSc	73
Economics MPhil/PhD/MA/MSc/PgDip	65	Financial Economics MSc	65
Economics and Econometrics MSc	65		
Economics (Environmental Economics) MSc	65		
Education MPhil/PhD/MA	65		
Education Doctorate (various themes) EdD	65		
Educational and Child Psychology Doctorate DEdChPsy	65		
Educational Leadership and School Improvement MA	65		
Educational Psychology Doctorate DEdPsy	65		
Educational Research MSc	65		

index

Financial Mathematics PhD/MPhil	52	Integrative Systems Biology PhD	46, 87, 98
Fixed and Removable Prosthodontics MSc/MSc (Clin)	92	Intellectual Property LLM	71
French Studies PhD/MPhil	67	Intellectual Property Law PgDip	71
G			
Gender, Sexuality and Culture PhD/MA	67	International Business and Commercial Law LLM	71
Gene Expression PhD/MPhil	87	International Business and Management MSc	73
Genetic Counselling MSc	93	International Development:	
Genetics PhD/MPhil	87	Development Management MA	69
Geographical Information Science MSc	68	International Development: Economics	
Geography: Human Geography MPhil/PhD	68	and Management of Rural Development MSc	69
Geography: Physical Geography MPhil/PhD	68	International Development: Environment	
German Studies PhD/MPhil	67	and Development MSc	69
Global Business Analysis MBus	73	International Development:	
Global Urban Development and Planning MA/MSc	69, 76	Politics and Governance MA	69
Globalisation and Development MSc	69	International Development: Poverty, Conflict and	
H			
Health and Social Care Research PgDip Res/MRes HSC	94	Reconstruction MA	69
Health Care Ethics and Law MSc		International Development: Public Policy	
(Intercalated)/MA/PgDip	71, 93	and Management MA	70
Health Sciences MPhil/PhD/MD/ChM	93	International Development (Research Training) MSc	69
Healthcare Management MSc	73	International Development: Social Policy and	
Hebrew Studies MA	74	Social Development MA	70
History PhD/MA	68	International Fashion Retailing	
History: Economic and Social History Integrated PhD	68	(inc various specialisms) MSc	52
History of Science, Technology and Medicine		International Financial Law LLM	71
PhD/MPhil/MSc/PgDip	87	International Human Resource Management and	
Human Resource Development		Comparative Industrial Relations MSc	73
(International Development) MSc	69	International Politics (Standard/Research routes)	
Human Resource Management and Development		MA/PgDip	77
(International Development) by Distance Learning		International Trade Transactions LLM	71
MSc/PgDip/PgCert	69	Interpreting Studies PhD/Phil	81
Human Resource Management and Industrial Relations		Investigative Ophthalmology and Vision Science MSc	93
MSc	73	Islamic Studies MA	74
Human Resource Management		Isotope Geochemistry and Cosmochemistry	
(International Development) MSc	69	PhD/MPhil/MSc by Res	49
Human Rights (Standard/Research routes) MA/PgDip	77	Italian Studies PhD/MPhil	67
Humanitarianism and Conflict Response PhD/MA	98	J	
I			
ICTs for Development MSc	69	Japanese Studies PhD/MPhil	64
Imaging, Genomics and Proteomics		L	
MPhil/PhD/MD/ChM	93	Languages and Linguistics MA/PgDip	72
Immunology PhD/MPhil	87	Latin American Cultural Studies MPhil/PhD/MA	70
Immunology and Immunogenetics MSc/PgDip	87	Law MPhil/PhD	71
Industry, Trade and Development MSc	69	Law and Development LLM/MA	71
Information Systems: Business Information		Linguistics PhD/MPhil/MA/PgDip	72
Technology MSc	73	Linguistics and English Language Integrated MA/PhD	72
Innovation Management and Entrepreneurship MSc	73	Literatures and Cultures 1200-1700 MA	66
Inorganic Chemistry PhD/MPhil	47	LLM (General)	71
Instrumentation PhD/MPhil	46	M	
Integrated Clinical PhD	92	Maintenance Engineering and Asset Management	
Integrative Neurobiology and Behaviour PhD/MPhil	87	MSc/PgDip/PgCert	54
		Management and Implementation of	
		Development Projects MSc	70
		Management and Information Systems: Change and	
		Development MSc/PgDip/PgCert	70

Management of Projects PhD/MPhil/MSc by Res/MSc	54
Management of Projects: Commercial Project Management MSc	54
Management of Projects: Construction Project Management MSc	54
Management of Projects: Engineering Project Management MSc	54
Management of Projects: IT Project Management MSc	54
Managerial Psychology MSc	73
Marketing (inc specialisms) MSc	73
Master of Environmental Sciences, Policy and Management (MESPOM)	50
Materials EngD/EntD/MEnt/PhD/MPhil/MSc by Res	51
Materials Chemistry PhD/MPhil	47
Maternal and Fetal Health MRes	93
Mathematical Finance MSc	53
Mathematical Logic PhD/MPhil	52
Mathematical Logic and the Theory of Computation MSc/PgDip	53
Mathematics EngD/EntD/MEnt	53
Mechanical, Aerospace and Civil Engineering EngD	54
Mechanical Engineering PhD/MPhil/MSc by Res	54
Mechanical Engineering Design MSc	54
Medical and Diagnostic Virology MSc	93
Medical and Molecular Microbiology MSc/PgDip	93
Medical Sciences MRes	93
Medieval Studies MA	68
Membrane Trafficking PhD/MPhil	87
Mental Health and Neurodegeneration MPhil/PhD/MD/ChM	93
Metallic Materials PhD/MPhil/MSc by Res	51
Microbiology PhD/MPhil	87
Middle Eastern History MA	94
Middle Eastern Studies PhD/MPhil/MA	74, 94
Modern British History MA	68
Modern European History MA	68
Molecular and Cellular Neuroscience PhD/MPhil	87
Molecular Biology PhD/MPhil	87
Molecular Cancer Studies PhD/MPhil	87
Molecular Parasitology and Vector Biology MSc/PgDip	87
Multi-Core Computing MSc	49
Multi-Scale Modelling PhD/MPhil	46
Musculoskeletal MPhil/PhD/MD/ChM	93
Museology PhD	74
Museology Professional Development Programme	74
Museum Practice Professional Doctorate	74
Music: Composition PhD	75
Music: Electroacoustic Composition PhD	75
Music: Musicology PhD	75
Music and Drama MA	75
Musicology MusM	75

N

Nanoelectronics MSc	51
Nanoscience PhD	46, 47, 48, 52, 55, 99
Nanostructured Materials PhD/MPhil/MSc by Res	51
Neuroscience PhD/MPhil/MSc/PgDip	87
Nuclear EngD	97
Nuclear Engineering EngD/PhD/MPhil	52, 54, 55, 73
Nuclear FiRST PhD	46, 47, 50, 52, 54, 55, 99
Nuclear Science and Technology MSc/PgDip/PgCert	55
Nursing MPhil/PhD	94

O

Occupational Hygiene MSc/PgDip	93
Occupational Medicine MSc/Advanced PgDip	93
Operations, Project and Supply Chain Management MSc	73
Operative Dentistry PhD/MPhil	92
Ophthalmology PhD/MPhil	87
Optometry PhD/MPhil	87
Organelle Function PhD/MPhil	87
Organic Chemistry PhD/MPhil	47
Oral and Maxillofacial Surgery PhD/MPhil/MSc/PgDip/MSc (Clin)	92
Oral Radiology PhD/MPhil	92
Organisational Change and Development MSc	70
Organisational Psychology MSc	73
Organisations and Management MSc	73
Orthodontics PhD/MPhil/MSc/MSc (Clin)	92

P

Palaeontology PhD/MPhil/MSc by Res	49
Paper Science PhD/MPhil/MSc by Res	51
Performance, Screen and Visual Studies MA	63
Persian Studies MA	74
Petroleum Geoscience for Exploration MSc	50
Petroleum Geoscience for Reservoir Development and Production	50
PGCE Primary	65
PGCE Primary (with Language Specialism)	65
PGCE Secondary Business Education	65
PGCE Secondary Design Technology	65
PGCE Secondary English	65
PGCE Secondary Mathematics	65
PGCE Secondary Modern Languages (French/German/Spanish)	65
PGCE Secondary Science (Biology/Chemistry/Physics)	66
Pharmaceutical Engineering Advanced Training MSc/PgDip/Modular	54
Pharmaceutical Industrial Advanced Training MSc/PgDip/PgCert	95
Pharmacology PhD/MPhil	87
Pharmacy and Pharmaceutical Sciences MPhil/PhD	95
Philosophy PhD/MRes/MA/PgDip	76
Photon Science MSc	55

index

Physical Chemistry PhD/MPhil	47	Social Anthropology with Visual Media MPhil/PhD	78
Physics PhD/MSc by Res/MEnt/EntD/EngD	55	Social Change MPhil/PhD/MSc/PgDip	79
Physics and Chemistry of Minerals and Fluids PhD/MPhil/MSc by Res	49	Social Research Methods and Statistics MSc/PgDip	79
Physics and Computing in Medicine and Biology MSc/PgDip	93	Social Statistics MPhil/PhD	79
Physiology PhD/MPhil	87	Social Work MPhil/PhD/MA	94
Planning and Landscape MPhil/PhD	76	Sociological Research MSc	80
Planning (Standard/Research routes) MPlan	76	Sociology MPhil/PhD/MA/PgDip	80
Plant Sciences PhD/MPhil/MSc/PgDip	87	Software Engineering MSc	49
Polish Studies PhD/MPhil	67	South Asian Studies MA	78
Political Economy (Standard/Research routes) MA/PgDip	76	Spanish Studies PhD/MPhil	67
Political Science (Standard/Research routes) MA/PgDip	77	Statistics PhD/MPhil/MSc by Res/MSc/PgDip	53
Politics MPhil/PhD/MA/PgDip	77	Stem Cell Research PhD/MPhil	87
Pollution and Environmental Control MSc	50	Structural and Petrological Geoscience PhD/MPhil/MSc by Res	49
Polymer Materials Science and Engineering MSc/PgDip/PgCert	47, 51, 52	Structural Biology PhD/MPhil	87
Polymer Science and Engineering PhD/MPhil/MSc by Res	52	Structural Biology and Biophysics MSc/PgDip	87
Portuguese Studies PhD/MPhil	67	Structural Engineering MSc	54
Post-1900 Literatures, Theories and Cultures MA	66	Supervision of Counselling and the Helping Professions PgCert	66
Postcolonial Literatures and Cultures MA	66	Systems Biology PhD/MPhil	46
Postgenomic Biology MSc/PgDip	87	Systems Neuroscience PhD/MPhil	87
Poverty and Development MSc	70		
Pre-Islamic Middle Eastern Studies MA	74	T	
Primary Care MRes	93	Technical Textiles MSc by Res	51
Probability PhD/MPhil	53	TESOL MA	66
Process Integration PhD/MPhil	46	Textile Design, Fashion and Management PhD/MPhil/MSc by Res	51
Profound and Complex Learning Disability MSc/PgCert/PgDip	66	Textile Science and Technology PhD/MPhil/MSc by Res	51
Prosthodontics PhD/MPhil	92	Textile Technology PgDip/PgCert	52
Psychiatry MSc/PgDip	93	Textile Technology (inc various specialisms) MSc	52
Psychology MPhil/PhD/MRes	95	Textiles and Fashion MEnt	51
Psychology of Education MEd	66	Theatre Studies MA	63
Public Administration MPA	73	Theoretical and Applied Fluid Dynamics MSc/PgDip	53, 54
Public Health MRes/MPH/PgDip/PgCert	93	Theoretical Chemistry PhD/MPhil	47
Public International and European Law	71	Thermal Power and Fluid Engineering MSc	54
Pure Mathematics PhD/MPhil/MSc/PgDip	53	Tissue Engineering for Regenerative Medicine MRes	93
		Toxicology PhD/MPhil	87
Q		Translation and Intercultural Studies PhD/MPhil	81
Quantitative Finance and Financial Engineering MSc	53 73	Translation and Interpreting Studies MA/PgDip	81
Quantitative Finance: Risk Management MSc	73	Translational Medicine MRes/PgCert	93
		Turkish Studies MA	74
R			
Radio to sub-mm-wave Imaging and Sensing MSc	55	U	
Refinery Design and Operation MSc/PgDip/PgCert	47	Urban Regeneration and Development MA	76
Religions and Theology PhD	78		
Religions and Theology (inc various specialisms) MA	78	V	
Respiratory MPhil/PhD/MD/ChM	93	Victorian Times MA	69
Restorative and Aesthetic Dentistry MSc	92	Visual Anthropology MPhil/MA	78
Restorative Dentistry PhD/MPhil	92		
Russian Studies PhD/MPhil	67	W	
		War, Culture and History MA	69
S		Work Based Medical Education MSc/PgDip/PgCert	93
Screen Studies MA	63	World History MA	69
Social Anthropology MPhil/PhD/MA/PgDip	78		



Disclaimer

This Prospectus aims to give an introduction to The University of Manchester for potential postgraduate students. It is prepared well in advance of the academic year to which it relates. At the time of going to press, the degree programmes described herein are those that the University is planning to offer in Session 2011/2012. The University will use all reasonable endeavours to deliver programmes listed in this Prospectus. However, the University reserves the right to make variations to the contents or methods of delivery of programmes, to discontinue programmes and to merge and combine programmes, if such action is reasonably considered to be necessary by the University.

The fees payable by students tend to increase with inflation or to reflect the University's financial position. The University therefore also reserves the right to make such alterations to the fees as necessary.

The University of Manchester
Oxford Road
Manchester
M13 9PL

www.manchester.ac.uk

Royal Charter Number RC000797
J2920 07.10

