



THE UNIVERSITY OF MANCHESTER
SUSTAINABLE DEVELOPMENT GOALS

2025-2027 REPORT

KEY FACTS

1st

UK university to embed social responsibility into its strategy



1st

in the UK and Europe for impact towards the UN SDGs

We produce

4%

of the UK's research across the 17 SDGs



Zero carbon campus commitment by **2038**



Accredited employer

for Living Wage, Race, Gender, Disability, LGBTQ+ equality and GM Good Employer Charter

500+

local and global NGOs supported by student volunteers each year



1.4 million+ public visitors to our cultural institutions



Platinum Engage Watermark for excellence in public engagement



TIMES HIGHER EDUCATION IMPACT RANKINGS

based on the UN Sustainable Development Goals



	2019	2022	2021	2022	2023	2024	2025
UK ranking	1st	1st	1st	2nd	1st	1st	1st
European ranking	1st	2nd	1st	2nd	1st	1st	1st
World ranking	3rd	8th	1st	9th	2nd	2nd	2nd
Total Entrants	450	768	1,240	1,406	1,705	2,152	2,318
Countries	76	85	98	106	115	125	130

INTRODUCTION

The United Nations Sustainable Development Goals (SDGs) represent a shared global commitment to address the defining challenges of our time — from climate change and inequality to health, prosperity and inclusion.

At Manchester, this call resonates deeply. As we enter our third century, we recognise the profound responsibility that falls to globally connected, research-intensive universities to respond decisively to these ambitions.

Social responsibility is not an adjunct to our mission; it is one of the five Foundations of *From Manchester for the world* – our strategic plan to 2035. As the UK's first university to establish social responsibility as a core goal, we are embedding it even more deeply across everything we do.

Our approach to advancing the SDGs is integrated and values-led — through engaged research, teaching, practice and operations. Together, these pillars reflect our commitment to be a civic university — of Manchester and for the world.

We are consistently recognised as a global leader in advancing the SDGs, including being ranked first in the UK and Europe in the Times Higher Education Impact Rankings. We see these results not as an end in themselves, but as signals that a values-driven, partnership-based approach can deliver real impact.

This report is intended for a wide range of audiences. As much as being an account of our work, it is also an invitation — to collaborate, to challenge, and to act together.

Dr Julian Skyrme
Executive Director of Social Responsibility and Civic Engagement

Professor Nalin Thakkar
Vice-President for Social Responsibility

CONTENTS	PAGE
GOAL 1: NO POVERTY	2
GOAL 2: ZERO HUNGER	3
GOAL 3: GOOD HEALTH AND WELL-BEING	4
GOAL 4: QUALITY EDUCATION	5
GOAL 5: GENDER EQUALITY	6
GOAL 6: CLEAN WATER AND SANITATION	7
GOAL 7: AFFORDABLE AND CLEAN ENERGY	8
GOAL 8: DECENT WORK AND ECONOMIC GROWTH	9
GOAL 9: INDUSTRY, INNOVATION AND INFRASTRUCTURE	10
GOAL 10: REDUCED INEQUALITIES	11
GOAL 11: SUSTAINABLE CITIES AND COMMUNITIES	12
GOAL 12: RESPONSIBLE PRODUCTION AND CONSUMPTION	13
GOAL 13: CLIMATE ACTION	14
GOAL 14: LIFE BELOW WATER	15
GOAL 15: LIFE ON LAND	16
GOAL 16: PEACE, JUSTICE AND STRONG INSTITUTIONS	17
GOAL 17: PARTNERSHIPS FOR THE GOALS	18
METHODOLOGY AND TIMELINES	19
INTERNAL UNIVERSITY ANALYSIS	20
VOLUME AND SHARE OF RESEARCH	21
IMPACT OF SDG RESEARCH	22
GLOBAL RANKINGS	23
ACKNOWLEDGEMENTS	23



1 NO POVERTY

End poverty in all its forms everywhere

RESEARCH

On current trends over 7% of the world's population will still live in extreme poverty in 2030.

Our **African Cities Research Consortium**, in partnership with UK International Development, NGOs, partner universities and the UN, is addressing poverty and development challenges across 12 African cities.

Working in partnership with Slum Dwellers International, our **Global Development Institute** is supporting community-led responses to urban poverty, working with residents of informal settlements across cities in the Global South.

TEACHING, LEARNING AND STUDENTS

Our **Global Development Institute** is the UK's largest university-based under- and postgraduate centre specialising in development issues.

More than 6,000 students have completed master's programmes in global development over the last 10 years.

PUBLIC AND CIVIC ENGAGEMENT

Our **Local Matters programme**, developed by our **Manchester Institute of Education**, is tackling poverty in schools by empowering staff to engage in action-based research to develop an evidence-based response to local issues.

OPERATIONS

We offer a range of non-repayable **financial support** for students from low-income backgrounds and other target communities, including care experienced and estranged students, students of black heritage and those with refugee status.

UK's largest postgraduate centre for international development

Our Students' Union have developed a basic needs centre called Essentials, which provides access to free pantry and hygiene products, financial wellbeing workshops and kitchen space.



2 ZERO HUNGER

End hunger, achieve food security and improved nutrition and promote sustainable agriculture

RESEARCH

Hunger is the world's leading cause of death. Researchers in our **Manchester Institute for Biotechnology** are improving the health of soil and food crops to increase yield and durability. Our **Soil and Ecosystem Ecology Lab** is also advancing our understanding of the interactions between plants and the biological communities in the soil, and their response to environmental changes.

23.2% research is co-authored with researchers in low- and middle-income countries

TEACHING, LEARNING AND STUDENTS

We offer PhD and MPhil programmes in Plant Science. Our Bioscience undergraduates take a Plants for the Future unit, exploring how plant biology can address social and environmental challenges. And our *Creating a Sustainable World* interdisciplinary unit includes modules on the SDGs that tackle sustainable food and zero hunger in great depth.

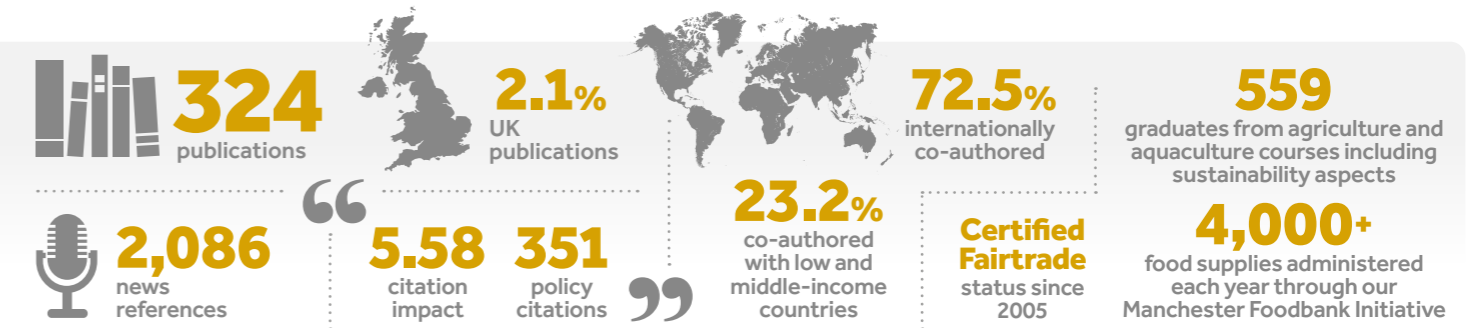
PUBLIC AND CIVIC ENGAGEMENT

Our student volunteers from RooTable are tackling local food insecurity by harvesting and delivering weekly supplies of seasonal produce to community organisations, alongside cooking support and education on sustainable food systems.

Our Students' Union are combatting food poverty among lower-income students through a pioneering Essentials initiative – a pantry that provides access to heavily discounted food and other essential goods. Our Healthier Futures platform is supporting a project with *Healthy Me Healthy Communities* on foodbank supply chains.

OPERATIONS

We support the **Kindling Trust**, an organisation combating climate change, biodiversity loss and economic inequity. We buy vegetables through Kindling's operatives and own shares in Kindling Farm – a blueprint for fair, organic and ecological farming.



3 GOOD HEALTH AND WELL-BEING



3

Ensure healthy lives and promote well-being for all at all ages



RESEARCH

Our interdisciplinary **Healthier Futures** platform is bringing together some of the best academic minds from across our disciplines to tackle inequalities to deliver fairer health.

One in two of us will receive a cancer diagnosis during our lifetime. Manchester's cancer **research** spans the entire cancer pathway, from pioneering novel prevention and earlier detection strategies through to advancing personalised treatments and changing policies around cancer treatments. As a partner in the **Manchester Cancer Research Centre**, alongside **CRUK** and **The Christie NHS Foundation Trust**, University of Manchester researchers, clinicians and healthcare professionals are improving outcomes for people around the globe.

TEACHING, LEARNING AND STUDENTS

We have the UK's largest medical school and are the biggest provider of graduate healthcare professionals to the NHS in England's north west. We offer pioneering professional programmes including on global health, humanitarianism and international healthcare leadership, as well as open access programmes on **Public Health and the SDGs**, and **AI for Healthcare**.

PUBLIC AND CIVIC ENGAGEMENT

We deliver a wide range of healthcare **partner-enabled learning** programmes, integrating community service with study

4,700+ students graduate in health-related programmes each year

to enrich learning, teach civic responsibilities and strengthen communities.

Pharmacy and dentistry students are addressing public health challenges in local schools, communities and the global south.

OPERATIONS

Sporticipate provides free and low-cost entry-level sport sessions for the University and wider community.

We host activities that promote wellbeing through nature. This includes the **Natural and Cultural Health Service**, by the Whitworth, and the **Green Wellbeing Project** held at our Firs Botanical Grounds.

4 QUALITY EDUCATION



4

Ensure inclusive and equitable quality education and promote lifelong learning opportunities for all



RESEARCH

Our **Manchester Institute of Education** leads the award-winning **#BeeWell** programme. Through it we listen to young people's voices, publish the results privately to schools and publicly by neighbourhood and drive action across society to improve wellbeing.

TEACHING, LEARNING AND STUDENTS

We are leading a pioneering International Green Learning and Skills Accelerator – a Times Higher Education initiative set up as part of the **United Nations' Green Jobs for Youth Pact** to empower education's role in the transition towards net zero.

We train more than 400 teachers each year

We offer **interdisciplinary units** to support inclusive, sustainable and equitable education. These include *Creating a Sustainable World: 21st Century Challenges and the Sustainable Development Goals and Equality, Diversity and Inclusion: Your Role in Shaping a Fairer World*.

We offer expert-led, free Massive Open Online Courses (**MOOCs**), **CPD programmes** and train future teachers through our **PGCE** programmes.

PUBLIC AND CIVIC ENGAGEMENT

We lead science public engagement campaigns, like the UNESCO **Great Science Share for Schools** initiative that has reached nearly a million people worldwide.

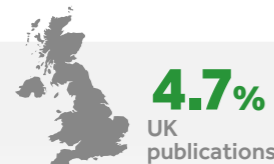
More than **100,000** people have engaged with our **RoundView** toolkit for sustainability thinking and learning.

We are a key partner in Manchester's designation as a **UNESCO City of Lifelong Learning**.

Our award-winning **School Governor Initiative** is one of the UK's most extensive programmes of work with local state schools and colleges.

OPERATIONS

The University of Manchester Library is one of only five National Research Libraries in the UK. We open access to north west sixth form and mature students, and their teachers to help with A-level, vocational and access course work. Our **John Rylands Research Institute** and Library and **Ahmed Iqbal Ullah RACE Centre** contain world-leading special collections, open to the public.





Achieve gender equality and empower all women and girls

RESEARCH

Our inter-disciplinary **Morgan Centre for Research into Everyday Lives** is an international centre of excellence for gender research. It covers issues of gender equality across personal relationships, intimacy, civil partnerships, same-sex marriage, reproductive technologies, and the growing incidence of shared living arrangements.

Our **Work and Equalities Institute** uses research to identify and promote conditions for greater gender equality in employment arrangements.

TEACHING, LEARNING AND STUDENTS

Gender equality is embedded across our degree programmes, with many offering modules on gender and sexuality. Medicine and Nursing students study the impact of gender on inequalities in health outcomes and textiles students examine the role of gender in fashion.

We offer specialised programmes such as a **master's in Gender, Sexuality and Culture**.

PUBLIC AND CIVIC ENGAGEMENT

Every year, we celebrate **International Women's Day** with events that engage the University and wider community and raise awareness of gender equality, celebrate women's achievements and take action to promote equity.

OPERATIONS

Our **Equality, Diversity and Inclusion** strategies and framework illustrate what we're doing to advance gender equality across our university. Our annual Equality Information Report provides key information on staff and student gender equality. Our Gender Pay Gap report measures differences between the average (mean and median) earnings of men and women who work at the university. We hold a **Silver Athena Swan** award for our work in advancing gender equality.



Ensure availability and sustainable management of water and sanitation for all

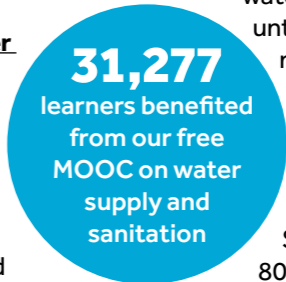
RESEARCH

We work with partners from industry, government, civil society groups, NGOs, and environmental organisations to ensure clean and responsible use of water. Research from our **Sustainable Futures** platform and **Manchester Environmental Research Institute** helps to enable sustainable, equitable and resilient management of water in the UK and internationally. This includes research on microplastic pollution, arsenic in water, graphene water filtration, flood management, irrigation and water-food environment systems.

TEACHING, LEARNING AND STUDENTS

We deliver cutting-edge teaching on clean water and sanitation. For example, master's students in **Environmental Monitoring, Modelling and Reconstruction** explore solutions to groundwater contamination.

Our two free **Water Supply and Sanitation Policy in Developing Countries** MOOCs open up access for citizens and leaders around the world to explore what can be done to solve this complex global issue.



PUBLIC AND CIVIC ENGAGEMENT

Our academics are taking the message about clean water to the wider public. Professor Jamie Woodward collaborated with celebrity Paul Whitehouse on *Our Troubled Rivers* to document how water companies illegally discharge untreated sewage, leading to microplastic pollution in UK rivers and contributing to biodiversity decline.

OPERATIONS

Staff and students can access 80 free water dispensers in our buildings and 1,200 bathrooms, 80 of which are publicly accessible.

We follow health and safety procedures and policies to prevent polluted water entering the water system, such as our **COSHH procedure**.



7 AFFORDABLE AND CLEAN ENERGY



Ensure access to affordable, reliable, sustainable and modern energy

8 DECENT WORK AND ECONOMIC GROWTH



Promote sustained, inclusive and sustainable economic growth, full and productive employment and decent work for all

RESEARCH

Through the **Energy Theme** within the **Sustainable Futures Platform**, more than 600 experts focus on delivering an inclusive clean energy transformation at unprecedented speed and scale, using collaborative innovation to accelerate impact.

Our expertise and **facilities** span the spectrum of technical energy solutions – from green hydrogen research in the **Industrial Hub for Sustainable Engineering**, to the **Manchester Hydrodynamics Lab** focusing on renewable energy, as well as research in **Tyndall Manchester** to understand how demand, infrastructure and social systems shape how energy is produced, distributed and consumed.

TEACHING, LEARNING AND STUDENTS

Our Master's programme in **Renewable Energy and Clean Technology** equips students with a detailed understanding of solar, wind and marine energy-generation technologies.

Our *Energy, Society and Space* unit in Geography examines scientific and political issues associated with energy provision and demand.

PUBLIC AND CIVIC ENGAGEMENT

The **Dalton Nuclear Institute** is a trusted source of information, engaging with the public, media, stakeholders and government, and contributing to important national

and international conversations around nuclear energy. We use events like *bluedot*, *Science X* and the Dalton Seminar Series to **engage the public, schools** and highlight the role of nuclear energy in the UK's net zero future.

OPERATIONS

From September 2025 we started purchasing renewable energy from a major new solar farm through a **Corporate Power Purchase Agreement (cPPA)**. The cPPA means that up to 65% of our electricity demand will be matched by a developer generating additional renewable energy on our behalf and halve the University's electricity carbon footprint.

RESEARCH

Our **Work and Equalities Institute** is helping to identify and promote the conditions for inclusive and fair work, and employment arrangements through informed contributions to policy formation and the development of employment practice.

We lead a UK-wide **Productivity Institute** to inform national policy and debate on what productivity means for business, workers and communities, how it's measured and how it contributes to increased living standards and wellbeing.

TEACHING, LEARNING AND STUDENTS

Undergraduate students learn how to promote inclusive and sustainable economic growth, employment and decent work for all through our BSc Management programmes.

We deliver an online **Power, Politics and Influence at Work** programme that has engaged more than 2,500 people to date.

We offer **Work Experience Bursaries** to equalise access to unpaid career-enhancing work experience.

PUBLIC AND CIVIC ENGAGEMENT

We organise a **Greater Manchester Citizens' Panel** where 50 local people are working with local universities and regional government to ensure citizen voice is shaping the jobs, growth and skills priorities in our region.

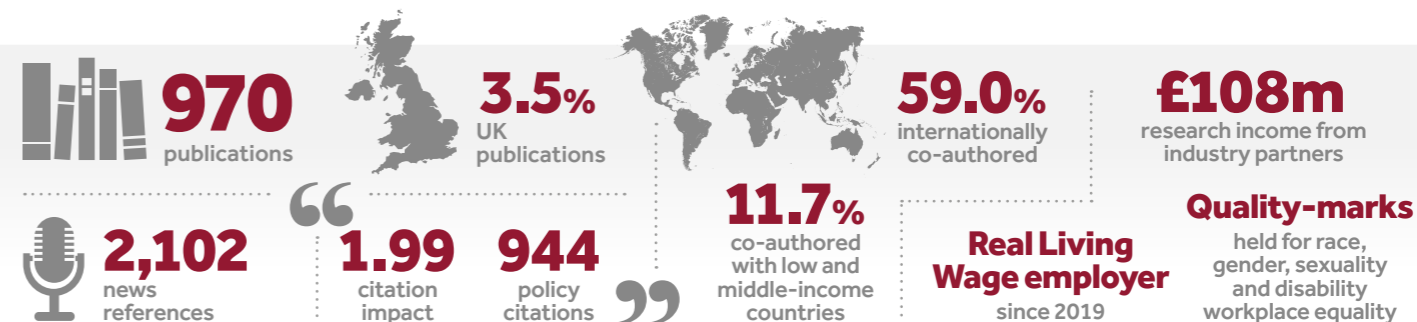
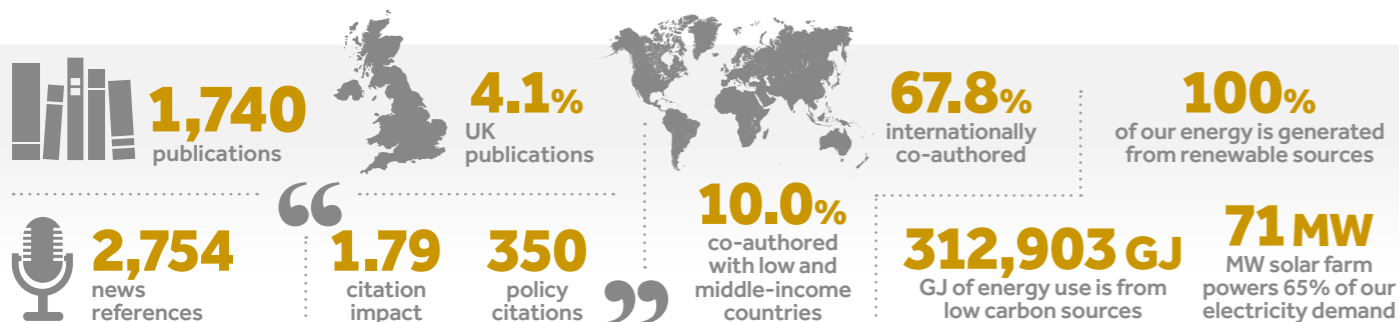
We've joined forces with regional employers and Manchester City Council to champion decent pay and make Manchester a **Living Wage Place**.

OPERATIONS

We're addressing unemployment rates and skills gaps through our partnership in **The Works** – an employment and training initiative at the heart of our local Ardwick community.

We're a voluntary Living Wage employer, paying at least the independent rate set each year by the Living Wage Foundation to ensure a decent standard of living for all.

Unit M is our new innovation arm and works with partners to drive inclusive growth across the region.



9 INDUSTRY, INNOVATION AND INFRASTRUCTURE



Build resilient infrastructure, promote sustainable industrialisation and foster innovation

RESEARCH

Our Digital Futures, Healthier Futures, Sustainable Futures and Creative Manchester **research platforms** are bringing together our people, ideas, and infrastructure to spur innovation with industry.

Our **Manchester Institute of Innovation Research** is a centre of excellence for innovation research.

Our **Christabel Pankhurst Institute**, **Henry Royce Institute**, **National Graphene Institute** and **Graphene Engineering Innovation Centre** are developing new technologies, products and processes with industry and government partners.

TEACHING, LEARNING AND STUDENTS

We encourage student innovation, such as through our **Innovation, Strategy and Entrepreneurship**

course and **Innovation Management and Entrepreneurship master's**. The **Enterprise Challenge** is part of a University-wide interdisciplinary enterprise unit. Our **Masood Entrepreneurship Centre** is a focal point for student enterprise and entrepreneurship skills.

PUBLIC AND CIVIC ENGAGEMENT

We partner with leading innovators from business, science, academia and local government to develop **Innovation Greater Manchester** which is creating 100,000 new jobs and boosting the regional economy by £7 billion.

We've partnered with Bruntwood SciTech to create **SISTER** – an innovation district where business, education and communities come together.

OPERATIONS

Our **Unit M** unit is accelerating innovation, unlocking the resources of the University ecosystem – from talent, training and R&D, to capital, enterprise and community by creating new ways to partner.

Our Business Engagement and Knowledge Exchange team develops partnerships with business and the third sector through collaborative research, consultancy, and knowledge exchange programs — spanning large multinationals to regional SMEs.

The University of Manchester Innovation Factory protects and commercialises our innovations and intellectual property by creating spin-out companies and licensing intellectual property based on our ideas.

We're shareholder and partner in **Northern Gritstone** – a venture capital company that invests in technology entrepreneurs in the north of England.

10 REDUCED INEQUALITIES



Reduce inequality within and among countries

RESEARCH

We support dedicated institutes, centres and networks to drive world-leading interdisciplinary research to make our city, nation and world a fairer and more equal place to live. These cover the people, place, participation and practice facets of inequalities.

Specialist areas include our Global Development Institute, Work and Equalities Institute, Manchester Urban Institute, Sustainable Consumption Institute, Cathie Marsh Institute for Social Research, Christabel Pankhurst Institute, Centre for Dynamics of Ethnicity, Humanitarian and Conflict Response Institute, Institute for Health Policy and Organisation and Manchester Institute for Education.

TEACHING, LEARNING AND STUDENTS

Students across all Faculties address inequalities in their studies — from

Sociology undergraduates analysing inequality in modern Britain to interdisciplinary units like *Your Role in Shaping a Fairer World*, which equip students to promote inclusion in study and work.

PUBLIC AND CIVIC ENGAGEMENT

Manchester academics Lucy Frith and Elaine Dewhurst advance global impact as Vice-Chairs for Research for the United Nations Academic Impact **SDG10 Hub**, a network of 1,700 institutions in 150+ countries.

Our world-leading cultural institutions tackle inequality through collections and exhibitions: our Whitworth gallery and the John Rylands Library proactively recover LGBTQIA+ narratives in contemporary culture; our AIU **RACE Centre** promotes racial justice through archives; and our Manchester Museum **Top Floor** partners with environmental

and social justice charities while embedding inclusive, accessible design.

OPERATIONS

We spend over £38 million per annum on student bursaries and tuition fee discounts to address inequalities.

Our **Equity and Merit Programme** supports exceptional students from lower-income countries in Africa. We also have dedicated financial support for those seeking sanctuary, with experience of the care system and for those with disabilities.



Our equality recognitions include: 7th in Stonewall Workplace Equality Index for LGBTQ+ equality; Race Equality Charter Silver; Advance HE Athena Swan Silver; University Mental Health Charter status; Care Leaver Covenant; University of Sanctuary; and an EmilyTest pilot.



11 SUSTAINABLE CITIES AND COMMUNITIES



Make cities inclusive, safe, resilient and sustainable

RESEARCH

We undertake interdisciplinary research to help cities be inclusive, safe, resilient and sustainable. Our **Manchester Urban Institute** works with local, national and international partners to improve life conditions in urban contexts. The **Manchester Environmental Research Institute** uses expertise to develop solutions for complex urban sustainability. Our **Global Development Institute** focuses on urban development in the global south.

TEACHING, LEARNING AND STUDENTS

Manchester students learn how to make cities inclusive, safe, resilient and sustainable. **Environmental Management** undergraduates and **Global Development Institute master's students** explore the challenges of creating green infrastructure in cities resilient to climate change.

97,779 learners around the world have completed a **Sustainable Cities** MOOC, developed in partnership with Lund University, the World Wide Fund for Nature and ICLEI.

PUBLIC AND CIVIC ENGAGEMENT

We lead the **National Consortium for Societal Resilience** to build resilience in local communities and throughout society. We developed a **Community Resilience Index** to help policymakers target support to communities that need it most. We support social cohesion through our convening power, cultural institutions, **policy engagement** and partnerships with NGOs such as Citizens UK.

We host, and partner with, **Ardwick Climate Action** to advance sustainability in a neighbouring community, particularly in relation to mitigating exposure to harmful air pollutants.

OPERATIONS

We've won awards recognising our work in creating more sustainable cities and communities including:

- Platinum Award for sustainable travel.
- 2030 Climate Action prize at Green Gown Awards.
- Gold for our solar farm development in the Association of University Directors of Estates Awards (AUDE Awards) Sustainability Impact Initiative category
- Top in the UK and Europe, and second in the world for the *THE* Impact Rankings



12 RESPONSIBLE CONSUMPTION AND PRODUCTION



Ensure sustainable consumption and production patterns

RESEARCH

We undertake interdisciplinary research to support more sustainable consumption and production patterns. Our **Sustainable Consumption Institute** works across consumption, cultural change, innovation, politics, and social justice in areas such as food, energy, housing, and transport. Our work in **sustainable industrial systems** uses advanced chemical engineering to identify sustainable solutions on a life cycle basis.

TEACHING, LEARNING AND STUDENTS

Our students learn about sustainable consumption and production of natural resources through a range of course units and programmes including: **Environmental Politics; Sustainability, Consumption and Global Responsibilities; Innovation for Sustainability;** and **Sociology of Consumption.**

PUBLIC AND CIVIC ENGAGEMENT

Our **Circularity in Healthcare Materials Provision (CHaMP)** project, in collaboration with Bupa Healthcare, is determining the barriers and opportunities for more sustainable materials within health services.

Our **Game changers** project is tackling the impact of textile waste in the football industry, transforming surplus football shirts into unique reusable tote bags.

Our student-led **Want Not Waste** zero-waste shop fosters a community of knowledge sharing and inspires sustainable consumer choices.

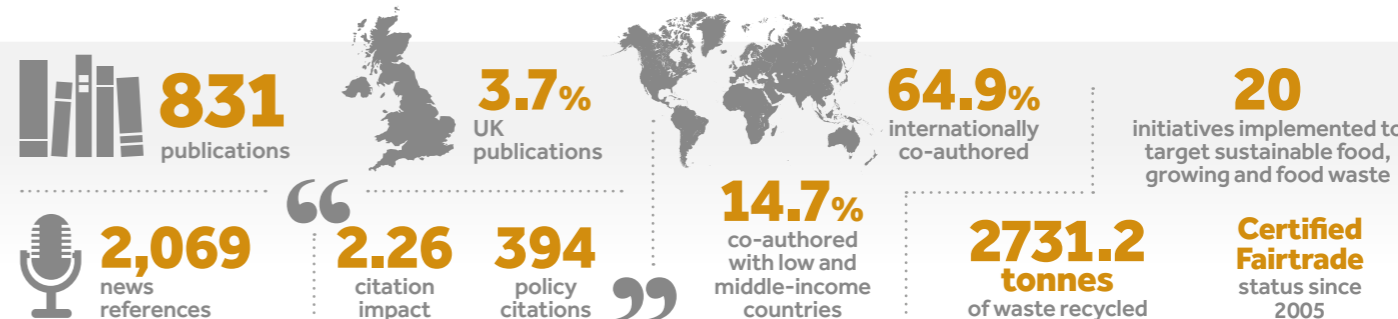
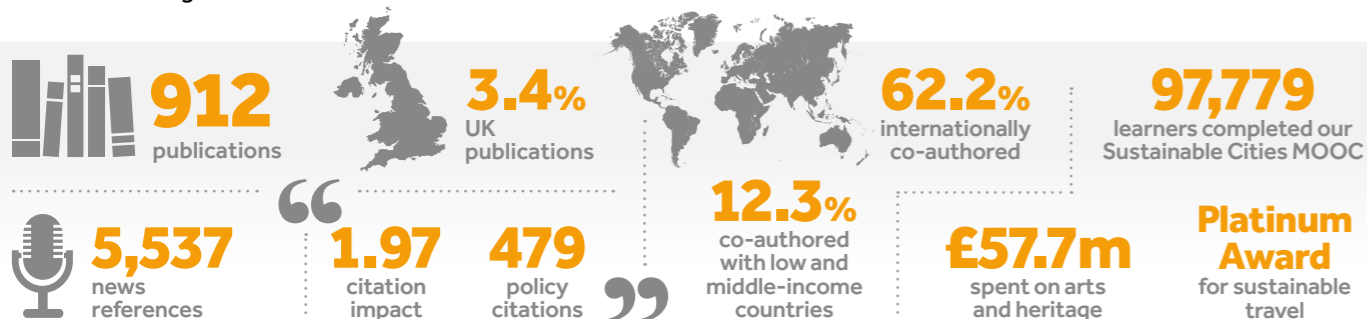
OPERATIONS

We follow the **6R Responsible Plastics Protocol**. It is designed to help people be aware of and combat plastic waste whenever and wherever possible.

As part of our commitment to reducing single-use plastics we've pioneered a new civic-engagement initiative called Bee Cup. **Bee Cup** is a joint project between the University, Manchester City Council and In Our Nature, which has seen the implementation of a reusable cup scheme across campus.

Our Laboratory Efficiency Assessment Framework (LEAF) framework is improving sustainability in research and teaching laboratory spaces, including reducing single use plastics.

We have partnered with acrylic manufacturer Floreeda to repurpose plastic waste through a **circular recycling process** that transforms student modelmaking offcuts into new acrylic sheets.



13 CLIMATE ACTION



Take urgent action to combat climate change and its impacts

RESEARCH

Our **Sustainable Futures** platform, **Manchester Environmental Research Institute**, **Manchester Urban Institute**, **Global Development Institute** and **Tyndall Manchester** centre are examples of research structures that are changing policies and practice to combat climate change and mitigate its impacts.

This spans natural sciences, engineering and social sciences, and supports research impact in energy systems, carbon budgets and pathways, the water energy food nexus, renewables and future fuels.

TEACHING, LEARNING AND STUDENTS

Undergraduates study climate change causes, impacts and solutions across all three Faculties; we offer four climate-focused **master's programmes**, and all undergraduates can take a dedicated **Climate Change and Society** unit.

PUBLIC AND CIVIC ENGAGEMENT

The Manchester Museum **Top Floor** hosts and partners with environmental and social justice charities.

We deliver climate outreach at our annual **Universally Manchester Festival**, through our global **Great Science Share for Schools** initiative and via a **wide range of events** organised by our Sustainable Futures platform.

Our **Green Career Mission** unites students across Greater Manchester to tackle real-world environmental challenges aligned with the GMCA Environment Plan and UN SDGs.

OPERATIONS

We aim to be zero-carbon for Scope 1 and 2 by 2038 (requiring ~13% annual cuts), with emissions already down 41% since 2007. Up to 65% of our electricity is matched through a Corporate Power Purchase Agreement. We also target net zero Scope 3 by 2050, with air travel emissions halved since 2018.

The UK's largest solar cPPA in higher education

14 LIFE BELOW WATER



Conserve and sustainably use the oceans, seas and marine resources for sustainable development

RESEARCH

Our **Manchester Environmental Research Institute** has 70 staff and 58 PhD researchers working on water-related issues. Examples include understanding and improving practice and policy in reducing microplastic pollution in rivers, a key contributor to overall marine pollution.

Pioneering research undertaken into marine-life across the 400 so-called 'dead zones' in oceans and seas worldwide

examining organisms living on shores and the seabed. **Geography** undergraduates study an Environmental Pollution unit covering water control strategies. At master's level, our online **Pollution and Environmental Control** programme prepares students for a career in environmental management and resource conservation.

PUBLIC AND CIVIC ENGAGEMENT

We engage the public on issues of overfishing, illegal, unreported and unregulated fishing and destructive fishing practices. Professor Holly Shiels worked in partnership with the Physiological Society to produce four **educational outreach video blogs** on the Greenland Shark and the impact of overfishing halibut.

The videos were shared with local, national and international communities on location in the Arctic.

OPERATIONS

We've committed to all laboratories achieving LEAF certification to reduce harmful pollutants.

Across our food operations we only buy Marine Stewardship Certified (MSC) fish.

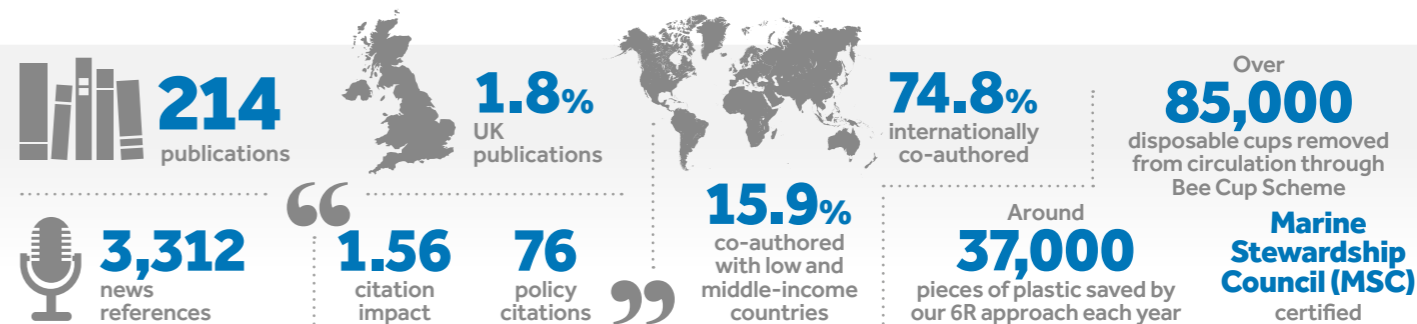
TEACHING, LEARNING AND STUDENTS

Our **Life Sciences** undergraduates take units on biodiversity, conservation biology and marine biology, including fieldwork

13



14





Protect, restore and promote sustainable use of terrestrial ecosystems, sustainably manage forests, combat desertification, halt and reverse land degradation, and halt biodiversity loss

RESEARCH

Our **Global Development Institute's** Sustainable Forest Transitions initiative is conducting ground-breaking interdisciplinary research to better understand the role of reforestation programmes in safeguarding terrestrial ecosystems and biodiversity.

Our **Just Earth Observation for Conservation** project is transforming understanding of the social risks and benefits of increased use of Earth Observation in conservation.

Researchers in our **Manchester Environmental Research Institute** work with policymakers to develop innovative approaches to sustaining and restoring ecosystems such as soils, grasslands, peatlands, green infrastructure, rivers and lakes, forests and agricultural systems.

TEACHING, LEARNING AND STUDENTS

Our **MSc in Nature Recovery, Restoration and Rewilding** equips students with the knowledge, skills, and global best practices needed to address the biodiversity crisis.

Undergraduate Zoology students study the conservation and ecology of animals. Bioscience students take part in a **Urban Biodiversity field course**.

Environmental Management undergraduate and postgraduate programmes develop skills needed for ecological surveys, conservation management and environmental auditing.

PUBLIC AND CIVIC ENGAGEMENT

We host a **community allotment** on campus, run in partnership with local NGO Ardwick Climate Action. The **Manchester Museum Vivarium**

allows the public to see conservation of live amphibians and reptiles. Our **iNaturalist** project improves our understanding of campus biodiversity by asking staff, students and the wider community to document wildlife on campus. We've also created an online, interactive campus **Tree Trail**, highlighting 50 of the 1,500 trees across Oxford Road campus.

OPERATIONS

We work with and alongside nature to preserve and promote biodiversity on campus. Our tree policy requires the planting of two trees for every one removed through campus developments. We've committed to increasing the quality of existing green spaces and achieving a 10% increase in urban green space by 2028. We are working towards increasing the number of bird, bat, and insect homes by 20% and becoming a bronze accredited hedgehog-friendly campus.

Founding signatory to the Nature Positive Pledge



Promote peaceful and inclusive societies for sustainable development, provide access to justice for all and build effective, accountable and inclusive institutions at all levels

RESEARCH

Our researchers are at the forefront of promoting peace, justice and strong institutions.

Criminology researchers are helping to combat **modern slavery** by examining who victims are, how they became victims and what can be done to reduce its prevalence. And our **N8 Policing Research Partnership** is an academic-police collaboration championing, enabling, and supporting research that tackles the challenges of 21st century policing.

TEACHING, LEARNING AND STUDENTS

Undergraduate students in Law and Criminology learn about justice and strong institutions through units in human rights, counter-terrorism, people trafficking and cyber-crime.

We offer Master's programmes covering areas including healthcare ethics and law, human rights, intellectual property and security, and international law.

Our Master's programme in History has an **Emerging Scholars Programme** to advance collective understanding of how profits from the transatlantic slavery economy funded the cultural and educational development of The University of Manchester and the wider city region.

PUBLIC AND CIVIC ENGAGEMENT

Our award-winning **Justice Hub** empowers students to apply various arms of the law to make real change in their communities. It hosts a free legal advice centre, addressing areas like family, housing, and immigration law for economically disadvantaged

individuals. Within this, the **Manchester Innocence Project** (MIP) works on live criminal appeals for those asserting innocence.

OPERATIONS

Our **Board of Governors** holds the University to account on its performance and good governance, and oversees our strategic direction, finances, property, and overall affairs, including staff employment.

Our policies demonstrate a zero-tolerance approach to **bribery, corruption, modern slavery, and human trafficking**.

2,000 people march against gender violence each year through Reclaim the Night





Strengthen the means of implementation and revitalise the global partnership for sustainable development

RESEARCH

We develop **research partnerships** with businesses, not-for-profits and government — regionally to boost productivity, nationally with the NHS and Department for Work and Pensions, and globally with multinationals including the United Nations.

TEACHING, LEARNING AND STUDENTS

Through our award-winning **University Living Lab**, 500+ students tackle real-world SDG challenges with local and global partners. Our Student **Volunteer Hub** links s supports 500+ charities annually, and our Students' Union co-founded the **Greater Manchester Student Assembly** to engage the Mayor on policy issues.

PUBLIC AND CIVIC ENGAGEMENT

We develop mutually beneficial partnerships with patients, communities, NGOs, cultural organisations, alumni, supporters and policy-makers.

These happen through Policy@ Manchester; our Digital Futures, Sustainable Futures, Healthier Futures and Creative Manchester; **Patient and Public Involvement and Engagement (PPIE) Forum**; our **Citizens Panel**; our partnership with Greater Manchester's **Citizens UK** chapter; **Challenge Accepted** – our global alumni and donor engagement initiative; a strong commitment to **engaged, participatory and co-produced research**; and the **Platinum Watermark** process, which assesses the quality of our public and community engagement.



OPERATIONS

We create and participate in regional partners to support a greener, healthier, fairer and more prosperous society. Examples include:

Innovation Greater Manchester – business, scientific, academic and local government partners who are advancing innovation; a **Civic University Board** – a coalition of five universities and the GMCA; **SISTER** – a joint venture with Bruntwood SciTech to create an innovation district; and **Health Innovation Manchester** – a partnership between the NHS, local councils, industry, research and academia.

METHODOLOGY AND TIMELINES

Research output indicators were identified from University of Manchester's publications across five calendar years (2021–2025). This mirrors methodologies used by global ranking organisations such as *Times Higher Education* and QS.

SDG publications

SDG publications were identified using the SDG specific Research Area within Elsevier SciVal (www.elsevier.com/en-gb/products/scival). Elsevier's data science teams have built search queries for the SDGs and augment these with a machine learning model to improve the completeness of the mapped documents to each SDG. The Times Higher Education use the Elsevier SDG mapping as part of their Impact Rankings. For example, for SDG1 – No Poverty, particular words were used to mine the titles, abstracts and author-defined keywords of publications within this dataset. These are not weighted equally by Scopus; some phrases attract a higher weighting. For example, the terms "pro-poor", "social care services" and "energy poverty" achieved the highest levels of relevancy against SDG1 using Elsevier's tf-idf (term frequency-inverse document frequency) calculation, which measures the

importance of a word to a document in a collection. These SDG keywords were applied to all SDGs across the five years 2021 to 2025, mining titles, abstracts and author-defined keywords of publications. Further limits were applied to identify collaborations with LMI countries as defined by the World Bank.

News and media mentions

News and media mentions were identified using Altmetric Explorer (www.altmetric.com/explorer). The filters applied in Altmetric Explorer were as follows: Affiliation GRID (University of Manchester); Relevant SDG; Dates: 01/01/2021 – 31/12/2025.

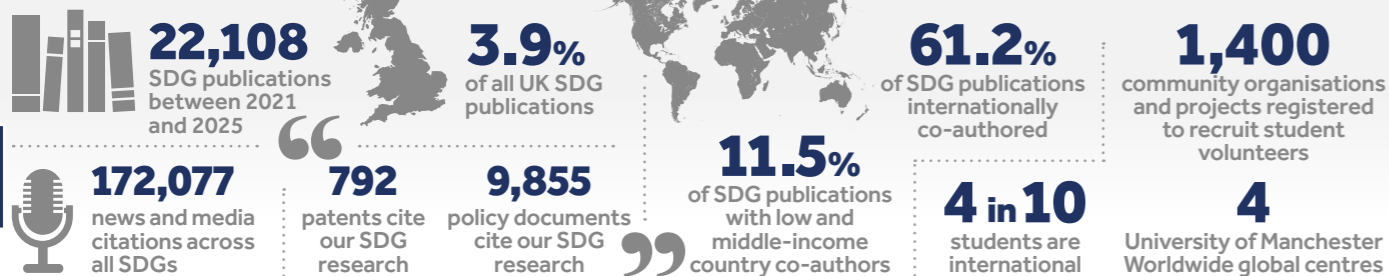
Internal Faculty/School/Institute analysis

SciVal was also used to identify University of Manchester SDG publications with international and LMI collaboration by internal Faculties, Schools and Research Institutes. This was a more complex data retrieval task, requiring some local work-around solutions. Faculty and School data was identified using bespoke 'Researcher Groups' created by the University of Manchester Library for internal purposes. These are based on lists of REF-eligible staff shared with our library annually. This method, which only measures REF eligible staff, does

not therefore capture publications by Honorary staff, PhD students, post-docs and staff who work at affiliated NHS trusts. These are, however, captured within the University-wide SDG analysis on the SDG publication worksheet – and accounts for disparities in total numbers across the two workbooks. In this case Publications from each researcher group (from 2021 to 2025) were exported from SciVal. These exports were then interrogated by a Python script which identified international and LMI collaboration for each individual SDG.

Research Institute information was identified using the UoM CRIS – Pure. The following filters were applied within Pure to create a list of staff for each Institute: Affiliation period = current; Research beacons, institutes and platforms = x, y or z; Type = Academic. This created a list of affiliated staff which was exported to SciVal. A 'Researcher Group' was then created for each Institute and followed the same procedure as outlined above.

All other figures in this document refer to the academic or calendar year ending in 2025.



INTERNAL UNIVERSITY ANALYSIS

FACULTY / SCHOOL / INSTITUTION / CENTRE	Number of papers	Number internationally co-authored	% international co-authored	Number LMI co-authored	% International co-authored with LMIs
Total for 2021, 2022, 2023, 2024, 2025	13349	7978	60%	1170	9%
School of Engineering	2377	1504	63%	188	8%
School of Natural Sciences	1454	970	67%	163	11%
Faculty of Science and Engineering total	3674	2390	65%	340	9%
School of Biological Sciences	1940	1226	63%	220	11%
School of Health Sciences	2024	821	41%	171	8%
School of Medical Sciences	2452	1441	59%	166	7%
Faculty of Biology, Medicine and Health total	5758	3243	56%	517	9%
Alliance Manchester Business School	544	330	61%	22	4%
School of Arts, Languages and Cultures	216	94	44%	38	18%
School of Environment, Education and Development	995	553	56%	127	13%
School of Social Sciences	729	331	45%	22	3%
Faculty of Humanities total	2452	1298	53%	207	8%
Cathie Marsh Institute for Social Research	211	101	48%	5	2%
Christabel Pankhurst Institute	3475	1861	54%	231	7%
Dalton Nuclear Institute	541	297	55%	16	3%
Global Development Institute	437	291	67%	94	22%
Henry Royce Institute	220	171	78%	27	12%
Humanitarian and Conflict Response Institute	188	73	39%	26	14%
Institute for Data Science & AI	975	479	49%	72	7%
Lydia Becker Institute	1800	1113	62%	148	8%
Manchester China Institute	101	63	62%	5	5%
Manchester Environmental Research Institute	1600	848	53%	132	8%
Manchester Institute of Biotechnology	270	142	53%	23	9%
Manchester Institute of Innovation Research	218	144	66%	18	8%
Manchester Urban Institute	484	226	47%	39	8%
National Graphene Institute	221	173	78%	31	14%
Photon Science Institute	311	225	72%	25	8%
Productivity Institute	138	88	64%	2	1%
Sustainable Consumption Institute	144	59	41%	4	3%
Thomas Ashton Institute	603	305	51%	35	6%
Work & Equalities Institute	229	95	41%	6	3%
John Rylands Research Institute and Library	12	5	42%	0	0%
Manchester Cancer Research Centre	1797	1085	60%	122	7%

VOLUME AND SHARE OF RESEARCH

* Elsevier don't map research keywords against SDG 17. These figures are the total for SDGs 1-16 and show the extent of our research partnerships across all goals.

	Number of UK publications 2021-2025	Number of UoM publications 2021-2025	UoM publications as % of UK publications 2021-2025	Rank among UK universities by number of publications 2021-2025	Field-Weighted Citation Impact ¹ 2021-2025	% of Publications in top 10% journal percentiles ²	Number of UoM outputs in 2021	Number of UoM outputs in 2022	Number of UoM outputs in 2023	Number of UoM outputs in 2024	Number of UoM outputs in 2023
SDG 1: No Poverty	10,218	379	3.71%	7	1.85	42.10%	83	74	69	75	78
SDG 2: Zero Hunger	15,735	324	2.06%	25	5.58	54.6%	64	65	60	65	70
SDG 3: Good Health and Well-being	193,613	9,053	4.68%	7	3.03	41.7%	2072	1965	1785	1709	1522
SDG 4: Quality Education	23,293	695	2.98%	6	1.47	32.7%	100	122	146	154	173
SDG 5: Gender Equality	19,096	521	2.73%	9	3.62	42.6%	95	84	106	118	118
SDG 6: Clean Water and Sanitation	13,425	539	4.01%	4	2.87	52.9%	113	108	108	98	112
SDG 7: Affordable and Clean Energy	42,365	1,740	4.11%	5	1.79	56.2%	360	338	311	365	366
SDG 8: Decent Work and Economic Growth	27,855	970	3.48%	4	1.99	47.0%	179	153	191	224	223
SDG 9: Industry, Innovation and Infrastructure	47,051	2,018	4.29%	3	1.89	50.8%	324	417	388	463	426
SDG 10: Reduced Inequality	32,106	1,245	3.88%	6	1.8	38.8%	204	222	260	274	285
SDG 11: Sustainable Cities and Communities	27,093	912	3.37%	6	1.97	52.7%	176	179	169	178	210
SDG 12: Responsible Consumption and Production	22,298	831	3.73%	2	2.26	54.8%	120	144	145	213	209
SDG 13: Climate Action	32,804	1,325	4.04%	7	2.29	62.4%	229	232	244	306	314
SDG 14: Life Below Water	11,880	214	1.80%	31	1.56	51.2%	48	37	28	56	45
SDG 15: Life on Land	17,992	368	2.05%	21	1.81	56.2%	86	59	60	74	89
SDG 16: Peace, Justice and Strong Institutions	33,038	974	2.95%	8	1.51	34.9%	171	151	205	220	227
SDG17: Partnerships for the Goals	*	*	*	*	*	*	*	*	*	*	*
All SDGs	569,862	22108	3.88%				4424	4350	4275	4592	4467

¹ With baseline = 1.00 for citation impact of all publications worldwide in this SDG

² By CiteScore Percentage

IMPACT OF SDG RESEARCH

* Elsevier don't map research keywords against SDG 17. These figures are the total for SDGs 1–16 and show the extent of our research partnerships across all goals.

	% of Scholarly output cited by policy	Number of policy documents citing UoM publications using in this SDG 2021-2025	Number of patents citing UoM publications in this SDG 2021-2025	Number of news and media citations in this SDG [via Altmetric]	Number of countries represented by non-UK co-authors 2021-2025	Number of countries represented by low and middle income country co-authors 2021-2025	Number of UoM papers in this SDG with international co-authors 2021-2025	% of UoM papers in this SDG with international co-authors 2021-2025	Number of UoM papers in this SDG with low or lower-middle income country co-authors 2021-2025	% of UoM papers in this SDG with low or lower-middle income country co-authors 2021-2025
SDG 1: No Poverty	29.30%	511	0	728	94	31	203	53.56%	75	19.79%
SDG 2: Zero Hunger	24.40%	351	2	2,086	151	49	235	72.53%	75	23.15%
SDG 3: Good Health and Well-being	13.30%	2419	538	101,329	187	63	5,755	63.57%	997	11.01%
SDG 4: Quality Education	11.10%	236	1	8,703	85	21	299	43.02%	52	7.48%
SDG 5: Gender Equality	21.90%	374	0	8,809	123	40	216	41.46%	57	10.94%
SDG 6: Clean Water and Sanitation	12.60%	223	12	1,546	132	42	408	75.70%	126	23.38%
SDG 7: Affordable and Clean Energy	5.50%	350	71	2,754	104	25	1,180	67.82%	174	10.00%
SDG 8: Decent Work and Economic Growth	23.70%	994	13	2,102	131	39	572	58.97%	113	11.65%
SDG 9: Industry, Innovation and Infrastructure	9.00%	697	71	1,697	105	26	1,293	64.07%	203	10.06%
SDG 10: Reduced Inequality	22.40%	833	6	8,610	136	40	567	45.54%	124	9.96%
SDG 11: Sustainable Cities and Communities	14.80%	479	4	5,537	121	40	567	62.17%	112	12.28%
SDG 12: Responsible Consumption and Production	12.80%	394	19	2,069	98	28	539	64.86%	122	14.68%
SDG 13: Climate Action	21.10%	1,200	44	12,119	112	29	895	67.55%	140	10.57%
SDG 14: Life Below Water	11.70%	76	5	3,312	62	11	160	74.77%	34	15.89%
SDG 15: Life on Land	16.60%	250	3	2,284	84	26	264	71.74%	68	18.48%
SDG 16: Peace, Justice and Strong Institutions	17.20%	468	3	8,392	93	27	385	39.53%	72	7.39%
SDG17: Partnerships for the Goals	*	*	*	*	*		*	*	*	*
All SDGs		9855	792	172077			13538	61.24%	2544	11.51%

ACKNOWLEDGEMENTS

A wide range of academic and professional staff supported the production of this report.

Grace Bartholomew, Graduate Intern in the Office for Social Responsibility, undertook the research, writing and project management activity across the publication. Grace led the project on a day-to-day basis, worked with a wide range of contacts across the University and produced first drafts of the key sections. Thanks go to Vanessa Rwenyagira, our previous Intern, for her work on an earlier version of this publication. Special thanks go to: John Hynes and Beth Norgrove from The University of Manchester Library for the quantitative bibliometric

research and analysis; to Hannah Baron and Professor Alice Larkin from our Sustainable Futures Platform; to Julia Durkan our Head of Environmental Sustainability; to Professor Jen O'Brien our Academic Lead for Sustainability; to Alison Fairclough from our Planning Office; to Lisa Govey from the Office for Social Responsibility. Finally, thanks go to our external designer David Webb (www.davidwebb.co.uk) for his enthusiasm and pride in making this content look so engaging. The publication was steered and overseen by Dr Julian Skyrme, Executive Director of Social Responsibility and Civic Engagement.

Follow up and engage



Download an electronic copy of the report.



Sign up to our monthly Social Responsibility Newsletter to stay in touch with our work on the Sustainable Development Goals and social responsibility more generally

Office for Social Responsibility

The University of Manchester
Oxford Road
Manchester M13 9PL
UK

email: socialresponsibility@manchester.ac.uk

tel: +44 (0) 161 306 3044



Download this report and read more
www.manchester.ac.uk/SDGs



Stay in touch and sign up to our newsletter
uom.link/social-responsibility-newsletter



[@socialresponuom](https://www.instagram.com/socialresponuom)



[social-responsibility-at-the-university-of-manchester](https://www.linkedin.com/company/social-responsibility-at-the-university-of-manchester)

