



The University of Manchester

FACULTY OF BIOLOGY, MEDICINE AND HEALTH
POSTGRADUATE RESEARCH

'WHERE TO START WHEN CONSIDERING POSTGRADUATE RESEARCH FOR 27/28?'

6 MAY 2026



TODAY'S PANEL



CHRISTIAN WARD

Host; Marketing and
Recruitment Officer



JOSEF KUTRYK

Admissions Administrator
(Recruitment)



ANUSHKA DIWAKAR

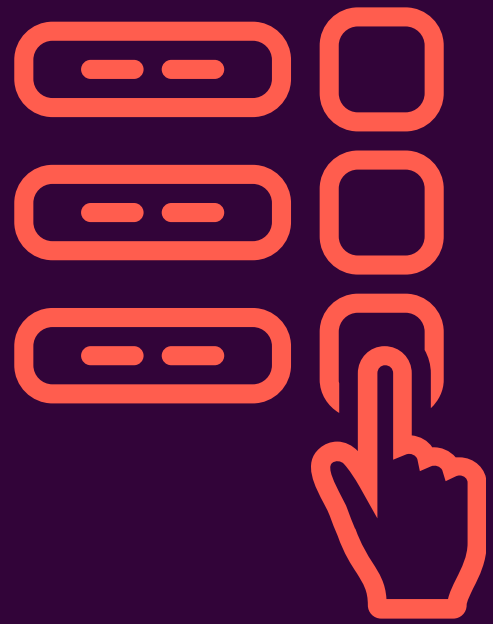
Postgraduate Researcher



ARGYRO OLYMPITIS

Postgraduate Researcher

POLL

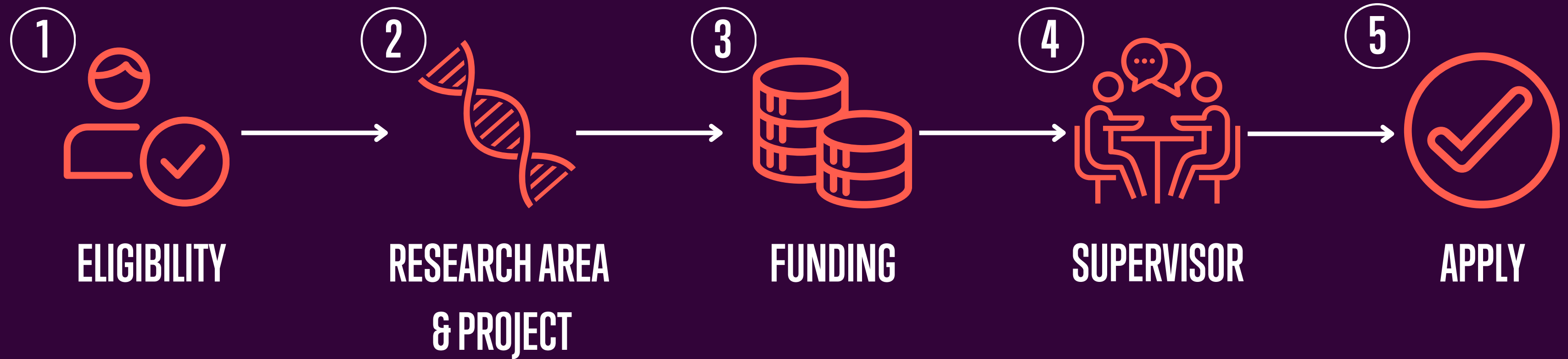


WHAT STAGE OF THE PGR JOURNEY ARE YOU AT?

LET US KNOW VIA THE POLL



THE POSTGRADUATE RESEARCH APPLICATION PROCESS



IS PGR FOR YOU?



POSTGRADUATE RESEARCH IS FOR YOU IF:

- You're fascinated by an area of your field
- You have research experience
- You're prepared to spend several years researching that one specific area
- You're driven and determined to push boundaries,
- You possess the resilience to persevere through challenges
- You're interested in a career in research, academia or industry related to your subject

MANCHESTER
1824

The University of Manchester



POSTGRADUATE RESEARCH ISN'T FOR YOU IF:

- You have limited research experience
- You're not certain that academia or research is for you
- You don't have a passion for research or a specific area
- You're putting off choosing a career direction
- You just want to get another qualification
- You're keen to begin your career and earn a full-time salary as soon as possible

STANDARD ENTRY REQUIREMENTS

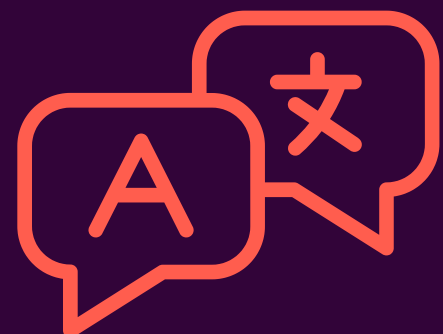
MANCHESTER
1824

The University of Manchester



Academic entry requirements

- Upper Second class degree (or international equivalent)
- or Lower Second class degree (or international equivalent) if you have:
 - A Master's merit or distinction
 - Considerable previous research experience
- Standard entry reqs. - may vary by programme/project



Language requirements

- Minimum IELTS score of 6.5-7.0 overall



SKILLS AND CHARACTERISTICS

- **Curious:**
 - Constant desire to learn more
- **Passionate:**
 - Strong opinions and beliefs on your area of research
- **Tenacious:**
 - Determination to complete tasks, however complex or long they take
- **Strong communication skills:**
 - Ability to speak, listen, observe, empathise with others effectively
- **Problem solver:**
 - Love to resolve issues with critical thinking and analytical skills
- **Demonstrable research potential:**
 - May have had work published, undertaken research or completed an extended project like a dissertation



RESEARCH EXPERIENCE

MANCHESTER
1824

The University of Manchester



INDUSTRY EXPERIENCE



RESEARCH PLACEMENT



MASTER'S



RELATED WORK EXPERIENCE



UNDERGRADUATE PROJECT PLACEMENT



YEAR IN INDUSTRY

DISCOVER YOUR PASSION

MANCHESTER
1824

The University of Manchester

FACULTY OF BIOLOGY, MEDICINE AND HEALTH

SCHOOL OF BIOLOGICAL SCIENCES

- Biochemistry
- Bioinformatics
- Biotechnology
- Cell Biology
- Cell Matrix Research
- Cognitive Neuroscience
- Developmental Biology
- Environmental Biology
- Evolutionary Biology
- Genetics
- Immunology
- Infectious Diseases
- Microbiology
- Molecular Biology
- Neuroscience
- Physiology
- Plant Science
- Stem Cell Research
- Structural Biology

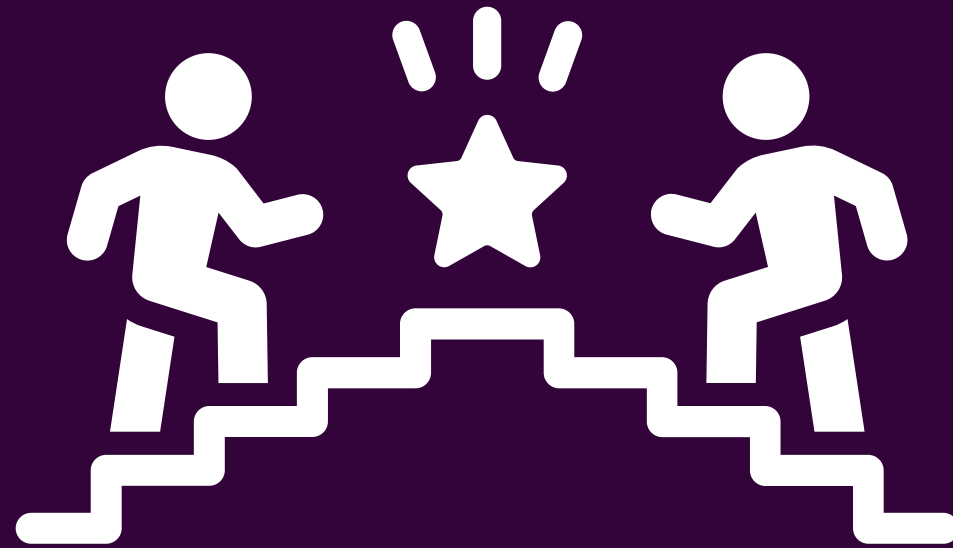
SCHOOL OF MEDICAL SCIENCES

- Basic Dental Sciences
- Cancer Sciences
- Cardiovascular Sciences
- Clinical Dentistry
- Dental Health Sciences
- Dermatological Sciences
- Endocrinology and Diabetes
- Endodontics
- Gastroenterology
- Genomics
- Inflammation Sciences
- Medical Genetics
- Medical Microbiology
- Medical Mycology
- Medical Virology
- Medicine
- Musculoskeletal Sciences
- Nutrition
- Ophthalmology
- Oral and Maxillofacial Surgery
- Orthodontics
- Prosthodontics
- Psychiatry
- Reproductive Sciences

SCHOOL OF HEALTH SCIENCES

- Audiology
- Biomedical Imaging Sciences
- Biostatistics
- Clinical Psychology
- Drug Design, Development and Delivery
- Epidemiology
- Experimental Psychology
- Health Economics
- Health Informatics
- Health Psychology
- Inflammation Sciences
- Medical Microbiology
- Mental Health
- Midwifery
- Nursing
- Occupational and Environmental Health
- Optometry
- Ophthalmology
- Pharmacology
- Pharmacy and Pharmaceutical Sciences
- Pharmacy Practice
- Primary Care and Health Services Research
- Psychology
- Public Health
- Social Work

FIND YOUR PROJECT



COMPETITION FUNDED



DIRECTLY FUNDED



SELF-FUNDED



SELF-PROPOSED

MANCHESTER
1824

The University of Manchester

Powered By FindAPhD.com

Department:
Faculty of Biology, Medicine and Health (214)

Supervisor:
All

Discipline:
All

Research Group:
All

Funding Status:
All

Keywords:
 [Apply](#)

214 PhDs Found [Reset Search](#)

(MRC DTP) Development of new antibacterials and antiviral beta-sheet forming peptides-based hydrogels.
Faculty of Biology, Medicine and Health
[PhD Research Project](#) [Competition Funded](#) [Students Worldwide](#)
[Dr Alberto Saiani](#), [Prof Aline Miller](#)
Application Deadline: 15 November 2024
[View Details](#)

(MRC DTP CASE) A platform for structural proteomics screening of membrane proteins
Faculty of Biology, Medicine and Health
[PhD Research Project](#) [Competition Funded](#) [Students Worldwide](#)
[Dr Argyris Politis](#), [Dr Christos Pilotas](#)
Application Deadline: 15 November 2024
[View Details](#)

(MRC DTP CASE) COSMOS: Collaborative Strategic Analysis of MyoNet Registry
Faculty of Biology, Medicine and Health
[PhD Research Project](#) [Competition Funded](#) [Students Worldwide](#)
[Dr J Lamb](#), [Dr H Chinoy](#)
Application Deadline: 15 November 2024
[View Details](#)

Sunlight exposure and cutaneous production of vitamin D in Black African/Afro-Caribbean adults
Faculty of Biology, Medicine and Health
[PhD Research Project](#) [Self Funded](#)
[Dr Mark Farrar](#), [Prof Ann Webb](#)
Application Deadline: Applications accepted all year round
[View Details](#)

Development of a zebrafish model to understand non-traumatic spinal cord injuries: spinal strokes
Faculty of Biology, Medicine and Health
[PhD Research Project](#) [Self Funded](#)
[Dr Ximena Soto Rodriguez](#), [Dr P Kasher](#), [Dr K Dorey](#)
Application Deadline: Applications accepted all year round
[View Details](#)

Investigate the novel therapeutic potential for treating heart failure in diabetes.
Faculty of Biology, Medicine and Health
[PhD Research Project](#) [Self Funded](#)
[Dr Vicky Liu](#), [Prof Martin Rutter](#)
Application Deadline: Applications accepted all year round
[View Details](#)

CONSIDER FUNDING

MANCHESTER
1824

The University of Manchester

STUDENTSHIPS



BBSRC NORTH WEST DOCTORAL
PROGRAMME IN BIOSCIENCE



MEDICAL RESEARCH COUNCIL
CoRE IN EXPOSOME IMMUNOLOGY



ALZHEIMER'S SOCIETY
DOCTORAL TRAINING CENTRE



PRESIDENT'S DOCTORAL
SCHOLAR AWARD



INTERNATIONAL PARTNERSHIP
PHD STUDENTSHIPS



ENGINEERING & PHYSICAL SCIENCES
RESEARCH COUNCIL DTP



BRITISH HEART FOUNDATION
MULTIDISCIPLINARY PHD PROGRAMME



DUAL-AWARD BETWEEN THE UNIVERSITY
OF MANCHESTER AND MELBOURNE



CANCER RESEARCH UK MANCHESTER
INSTITUTE STUDENTSHIPS



ECONOMIC & SOCIAL RESEARCH COUNCIL
NWSS CASE & DTP



CONTROL AND DESIGN OF BIOENGINEERED
MICROBIAL CELLS AND SYSTEMS PHD PROGRAMME



PHD BY ENTERPRISE



CANCER RESEARCH UK MANCHESTER
CENTRE STUDENTSHIPS & MB-PHD



THE KENNEDY TRUST
MB-PHD

SCHOLARSHIPS



EXCELLENCE IN DIVERSITY
PHD SCHOLARSHIPS



UOM-CHINA SCHOLARSHIP COUNCIL
SCHEME

CONSIDER FUNDING

MANCHESTER
1824

The University of Manchester

FUNDED PROJECTS

ADVERTISED AS DIRECTLY FUNDED PROJECTS

INDIVIDUAL FULLY FUNDED PROJECTS

OTHER WAYS TO FUND YOUR POSTGRADUATE RESEARCH

TO FUND SELF FUNDED PROJECTS OR SELF-PROPOSED PROJECTS

EXTERNAL FUNDING - CHARITIES, TRUSTS, FOUNDATIONS

HOME GOVERNMENT (INTERNATIONAL APPLICANTS)

POSTGRADUATE LOAN

SELF-FUNDING

CONTACTING THE SUPERVISOR



MANCHESTER
1824

The University of Manchester



BEFORE YOU APPLY AND APPLYING

MANCHESTER
1824

The University of Manchester



SUPERVISOR



CV



REFeree
NAMES



PROJECT



PERSONAL
STATEMENT

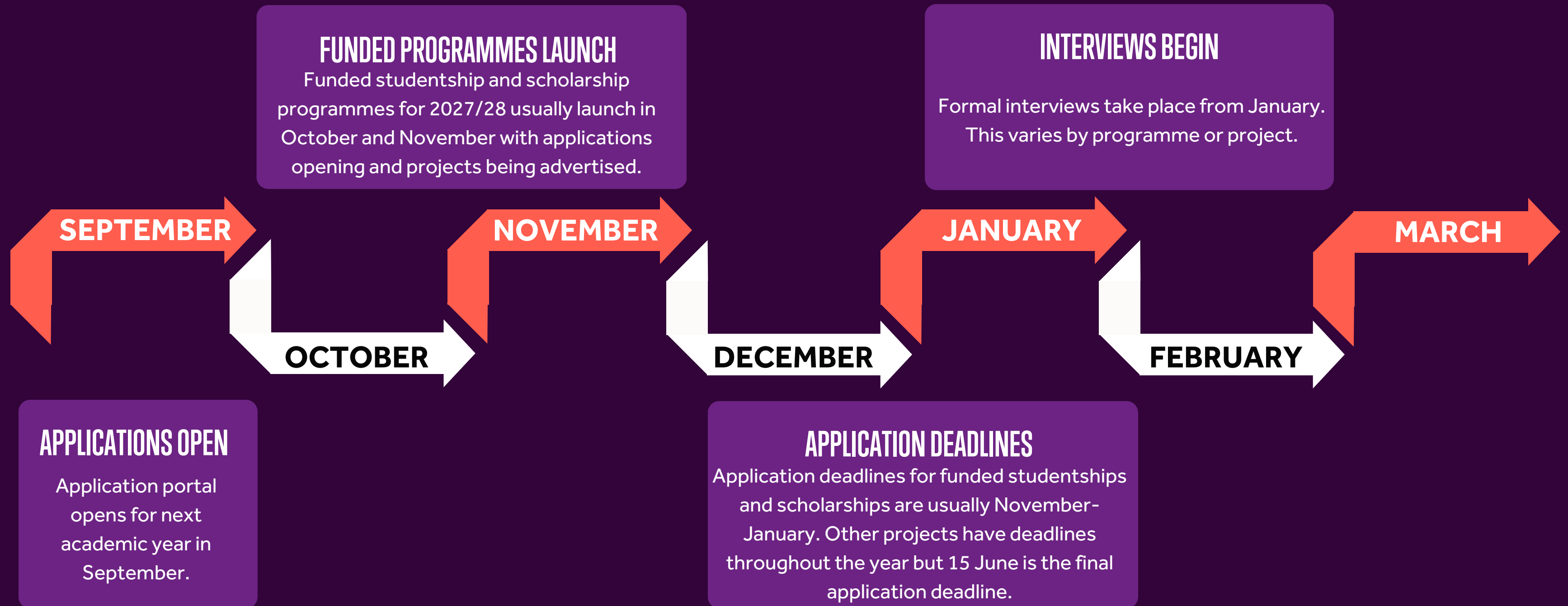


TRANSCRIPTS/
CERTIFICATES

TIMELINE FOR 2027/28

MANCHESTER
1824

The University of Manchester



PANEL Q&A

GOT A QUESTION?

ADD IT TO THE Q&A CHAT



MEET OUR POSTGRADUATE RESEARCHER



ANUSHKA DIWAKAR

Division of
Population Health, Health
Services Research and
Primary Care

ANUSHKA: MY JOURNEY TO POSTGRADUATE RESEARCH

- Researching behavioural determinants of fuel-use and health outcomes in rural Bihar, India
- BSc Clinical Research & Healthcare Management, followed by a Masters of Public Health
- Realised the importance of preventive health and grassroots work
- Health insurance and on Women Empowerment programmes as a Programme Manager for 3 years
- While working with communities, I developed a research idea and began exploring funding for it
- Chose Manchester for its strong focus on interdisciplinary research
- If you have an idea, put it into words!



MEET OUR POSTGRADUATE RESEARCHER



ARGYRO OLYMPITIS

Division of
Immunology, Immunity to
Infection and Respiratory
Medicine

ARGYRO: MY JOURNEY TO POSTGRADUATE RESEARCH

- Currently researching immune-matrix interactions in glioblastoma
- I loved immunology and pathology lectures in my undergrad and I wanted to delve into it more!
- Originally began training as a vet at the University of Liverpool, then moved to Manchester to do a BSc in Immunology and worked in a lab after graduating
- Manchester has a world-renowned immunology institute, and I love the city
- Hoping to do a post-doc, but I am also exploring Sci Comms
- Don't sell yourself short!



PANEL Q&A

GOT A QUESTION FOR OUR PANEL?
ADD IT TO THE Q&A CHAT



NEXT STEPS



**VISIT OUR WEBSITE TO DISCOVER MORE
INCLUDING HOW TO APPLY, AVAILABLE
PROJECTS, FUNDING AND MORE.
[UOM.LINK/BMH-PGR-WEBINAR-MORE](https://uom.link/bmh-pgr-webinar-more)**



**SIGN-UP TO OUR MAILING LIST
RECEIVE OUR FUNDING ALERTS,
EVENT UPDATES AND MONTHLY NEWSLETTER.
[UOM.LINK/BMH-PGR-WEBINAR-MAILINGLIST](https://uom.link/bmh-pgr-webinar-mailinglist)**



The University of Manchester

**FACULTY OF BIOLOGY, MEDICINE AND HEALTH
POSTGRADUATE RESEARCH**

THANK YOU FOR JOINING US!

**LET US KNOW YOUR FEEDBACK VIA
OUR POST-EVENT SURVEY**

[UOM.LINK/BMH-PGR-SURVEY](https://uom.link/bmh-pgr-survey)

