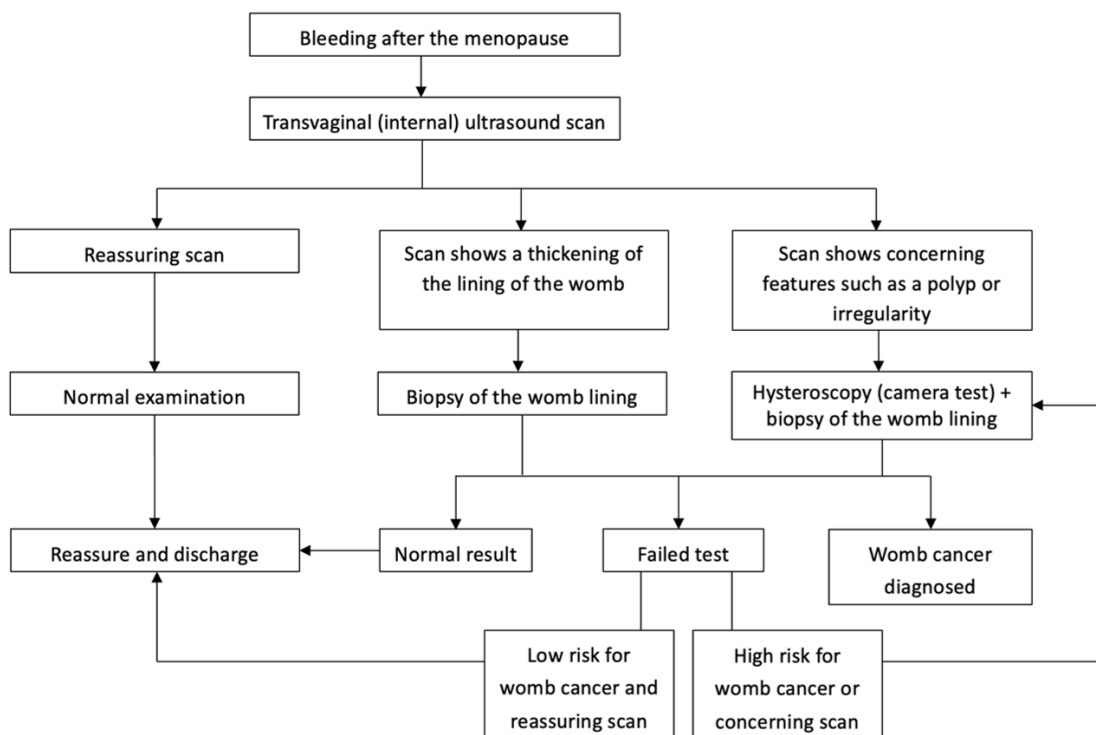


# SONNET flowchart

This flowchart shows the current recommended investigation pathway for people with suspected womb cancer.

An [accessible alternative-text version](#) of the diagram is available below the diagram.



## Flowchart - accessible alternative-text version

- **Start:** “Bleeding after the menopause” leads to “Transvaginal (internal) ultrasound scan.”. This leads to three possible pathways:
  1. “Reassuring scan” in combination with a “Normal examination,” leads to “Reassure and discharge.”
  2. “Scan shows a thickening of the lining of the womb” leads to “Biopsy of the womb lining.”. This leads to three possible pathways:
    - a. “Normal result” leads to “Reassure and discharge.”
    - b. In the event of a “Failed test”:
      - i. A “Low risk for womb cancer and reassuring scan,” leads to “Reassure and discharge,” or
      - ii. A “High risk for womb cancer or concerning scan,” leads to “Hysteroscopy (camera test) + biopsy of the womb lining.” (see 3).
    - c. “Womb cancer diagnosed”.

3. “Scan shows concerning features such as a polyp or irregularity” leads to “Hysteroscopy (camera test) + biopsy of the womb lining.”. This leads to three pathways:
  - a. “Normal result” leads to “Reassure and discharge.”
  - b. In the event of a “Failed test”:
    - i. A “Low risk for womb cancer and reassuring scan,” leads to “Reassure and discharge,” or
    - ii. A “High risk for womb cancer or concerning scan,” leads to “Hysteroscopy (camera test) + biopsy of the womb lining.” (see 3).
  - c. “Womb cancer diagnosed”.

- **Possible outcomes:**

“Reassure and discharge” or “Womb cancer diagnosed.”