

ASSESSMENT FACTSHEET

STUDENT



How do I submit my assignment?

You can submit online assignments in Canvas using several submission types. Check the [Canvas Student Guide](#) to help you submit your assignments.



What is the Assessment Criteria?

Your Course Lead may include a rubric as part of your assignment. This is a set of criteria used to grade your assignment.
[Check how to view the rubric.](#)



How do I report mitigating circumstances or request an extension?

You must report this to your Course Lead or School [Student Support and Wellbeing team](#) as soon as possible.



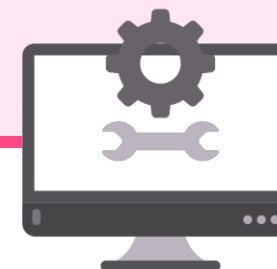
Who should I contact about any DASS queries?

You can contact your [Disability Adviser](#), [DASS Caseworker](#) or contact your School [Student Support and Wellbeing team](#).



How do I access my grades and feedback in Canvas?

Feedback and marks are released in Canvas through the Grades area.
[Click for more info](#)



What should I do if I have any technical issues?

Your first point of reference for any technical issues is IT Services.
[Raise an IT ticket here](#)