



The University of Manchester

FACULTY OF BIOLOGY, MEDICINE AND HEALTH  
POSTGRADUATE RESEARCH

# 'WHERE TO START WHEN CONSIDERING POSTGRADUATE RESEARCH FOR 26/27?'

24 SEPTEMBER 2025



# TODAY'S PANEL



**CHRISTIAN WARD**

Host; Marketing and  
Recruitment Officer



**JAMES LISTER**

Recruitment and  
Admissions Officer



**LILY MOTT**

Postgraduate  
Researcher



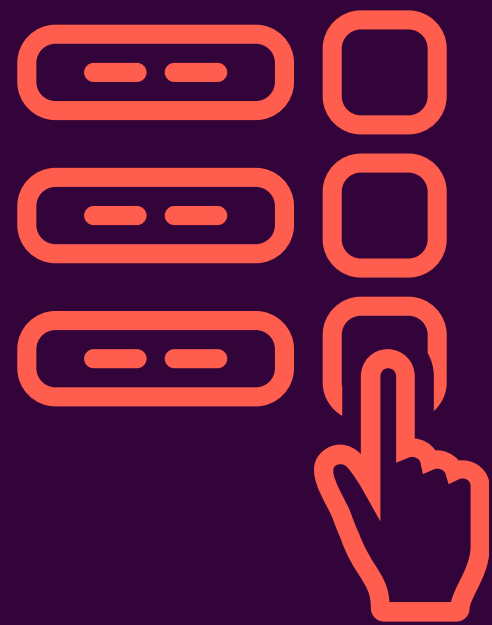
**SURAIYA MOHAMMED**

Postgraduate  
Researcher

**POLL**

MANCHESTER  
1824

The University of Manchester

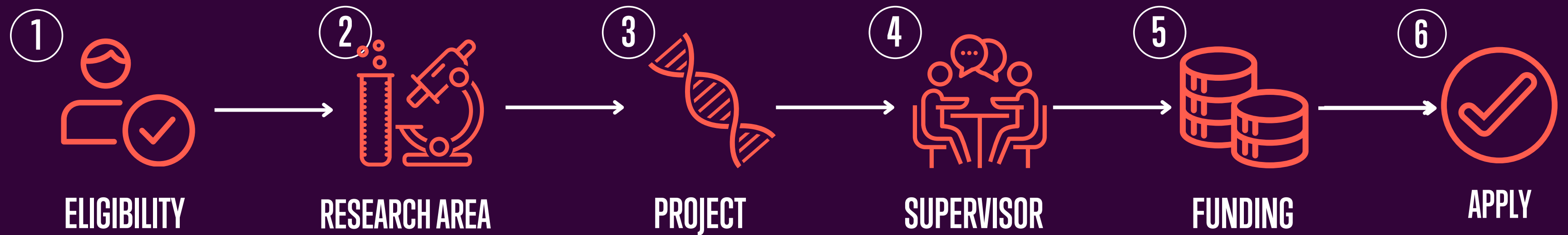


**WHAT STAGE OF THE PGR JOURNEY ARE YOU AT?**

**LET US KNOW VIA THE POLL**



# *THE POSTGRADUATE RESEARCH APPLICATION PROCESS*



[UOM.LINK/BMH-PGR-WEBINAR-MORE](https://uom.link/bmh-pgr-webinar-more)

# IS PGR FOR YOU?

[UOM.LINK/BMH-PGR-WEBINAR-START](https://uom.link/bmh-pgr-webinar-start)



## POSTGRADUATE RESEARCH IS FOR YOU IF:

- You're fascinated by an area of your field
- You have research experience
- You're prepared to spend several years researching that one specific area
- You're driven and determined to push boundaries,
- You possess the resilience to persevere through challenges
- You're interested in a career in research, academia or industry related to your subject

MANCHESTER  
1824

The University of Manchester



## POSTGRADUATE RESEARCH ISN'T FOR YOU IF:

- You have limited research experience
- You're not certain that academia or research is for you
- You don't have a passion for research or a specific area
- You're putting off choosing a career direction
- You just want to get another qualification
- You're keen to begin your career and earn a full-time salary as soon as possible

1 ELIGIBILITY

2 RESEARCH AREA

3 PROJECT

4 FUNDING

5 SUPERVISOR

6 APPLYING

7 AFTER YOU APPLY

# STANDARD ENTRY REQUIREMENTS

[UOM.LINK/BMH-PGR-WEBINAR-START](https://uom.link/bmh-pgr-webinar-start)



## Academic entry requirements

- Upper Second class degree (or international equivalent)
- or Lower Second class degree (or international equivalent) if you have:
  - A Master's merit or distinction
  - Considerable previous research experience
- Standard entry reqs. - may vary by programme/project



## Language requirements

- Minimum IELTS score of 6.5-7.0 overall

MANCHESTER  
1824

The University of Manchester



1 ELIGIBILITY

2 RESEARCH AREA

3 PROJECT

4 FUNDING

5 SUPERVISOR

6 APPLYING

7 AFTER YOU APPLY

# SKILLS AND CHARACTERISTICS

UOM.LINK/BMH-PGR-WEBINAR-START

- **Curious:**
  - Constant desire to learn more
- **Passionate:**
  - Strong opinions and beliefs on your area of research
- **Tenacious:**
  - Determination to complete tasks, however complex or long they take
- **Strong communication skills:**
  - Ability to speak, listen, observe, empathise with others effectively
- **Problem solver:**
  - Love to resolve issues with critical thinking and analytical skills
- **Demonstrable research potential:**
  - May have had work published, undertaken research or completed an extended project like a dissertation



1 ELIGIBILITY

2 RESEARCH AREA

3 PROJECT

4 FUNDING

5 SUPERVISOR

6 APPLYING

7 AFTER YOU APPLY

# RESEARCH EXPERIENCE

UOM.LINK/BMH-PGR-WEBINAR-START

MANCHESTER  
1824

The University of Manchester



1 ELIGIBILITY

2 RESEARCH AREA

3 PROJECT

4 FUNDING

5 SUPERVISOR

6 APPLYING

7 AFTER YOU APPLY

# DISCOVER YOUR PASSION

MANCHESTER  
1824

The University of Manchester

## FACULTY OF BIOLOGY, MEDICINE AND HEALTH

### SCHOOL OF BIOLOGICAL SCIENCES

- Biochemistry
- Bioinformatics
- Biotechnology
- Cell Biology
- Cell Matrix Research
- Cognitive Neuroscience
- Developmental Biology
- Environmental Biology
- Evolutionary Biology
- Genetics
- Immunology
- Infectious Diseases
- Microbiology
- Molecular Biology
- Neuroscience
- Physiology
- Plant Science
- Stem Cell Research
- Structural Biology

### SCHOOL OF MEDICAL SCIENCES

- Basic Dental Sciences
- Cancer Sciences
- Cardiovascular Sciences
- Clinical Dentistry
- Dental Health Sciences
- Dermatological Sciences
- Endocrinology and Diabetes
- Endodontics
- Gastroenterology
- Genomics
- Inflammation Sciences
- Medical Genetics
- Medical Microbiology
- Medical Mycology
- Medical Virology
- Medicine
- Musculoskeletal Sciences
- Nutrition
- Ophthalmology
- Oral and Maxillofacial Surgery
- Orthodontics
- Prosthodontics
- Psychiatry
- Reproductive Sciences

### SCHOOL OF HEALTH SCIENCES

- Audiology
- Biomedical Imaging Sciences
- Biostatistics
- Clinical Psychology
- Drug Design, Development and Delivery
- Epidemiology
- Experimental Psychology
- Health Economics
- Health Informatics
- Health Psychology
- Inflammation Sciences
- Medical Microbiology
- Mental Health
- Midwifery
- Nursing
- Occupational and Environmental Health
- Optometry
- Ophthalmology
- Pharmacology
- Pharmacy and Pharmaceutical Sciences
- Pharmacy Practice
- Primary Care and Health Services Research
- Psychology
- Public Health
- Social Work

1 ELIGIBILITY

2 RESEARCH AREA

3 PROJECT

4 FUNDING

5 SUPERVISOR

6 APPLYING

7 AFTER YOU APPLY

# FIND YOUR PROJECT

UOM.LINK/BMH-PGR-WEBINAR-PROJECTS

MANCHESTER  
1824

The University of Manchester

Download by FirstPhD.com

Department:  
All

Supervisor:  
All

Discipline:  
All

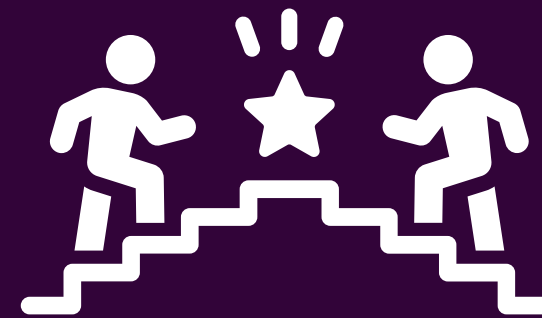
Funding Status:  
All

Keywords:  
Apply

85 PhDs Found

Reset Search

Results 1 - 10 of 85



COMPETITION FUNDED



SELF-FUNDED



DIRECTLY FUNDED

## Physiology and mathematical modelling of pharmacodynamics in the human placenta

Division of Developmental Biology and Medicine

PhD Research Project Self Funded

Dr P Brownbill, Dr Eleanor Doman

Application Deadline: Applications accepted all year round

### Details

Medicines regulators are calling for new alternative methods to replace animal testing of in the safety evaluation of pharmaceuticals prescribed to women of childbearing age. The ex vivo dual perfusion model of the human placenta provides an ethical potential to study drug uptake and transfer from the maternal to the fetal circulation. This model requires further developmental steps to bring the technology to acceptable through-put speed for toxicology testing, without compromising on the quality control of test data. It also provides useful tools in the development of mathematical models to understand the efficacy and mechanisms of uptake processes of traditional compounds and biopharmaceuticals.

This self-funded PhD opportunity will investigate the complexities of hydrostatic pressure differences and transplacental barrier "leaks" of fetal perfusate using the ex vivo dual perfusion model of the human placenta. The effects of these "leaks" will be mathematically modelled for the counter-current maternal-side to fetal-side transfer of inert compounds and medications across the barrier. It requires a candidate with a deep interest in biological mechanisms and placental anatomy and a preparedness to learn physiological techniques of the human placenta alongside analytical and computational model development. On call work will be required to follow with experimentation on freshly delivered placentas from maternal disease.

Candidates are expected to hold (or be about to obtain) a minimum 2:1 Bachelors Degree with Honours (or equivalent) in a related area/subject. Candidates with experience in physics or mathematics, or with an interest in pharmacology and mathematical modelling are encouraged to apply.

### Eligibility

Applicants must have obtained or be about to obtain a minimum Upper Second class UK honours degree, or the equivalent qualifications gained outside the UK, in a relevant discipline.

### Before you Apply

Applicants must make direct contact with preferred supervisors before applying. It is your responsibility to make arrangements to meet with potential supervisors, prior to submitting a formal online application.

### How to Apply

To be considered for this project you MUST submit a formal online application form – on the application form select PhD Developmental Biology Programme. Full details on how to apply can be found on the Website: [How to apply for postgraduate research at The University of Manchester](#)

If you have any queries regarding making an application please contact our admissions team [FBMH.doctoralacademy.admissions@manchester.ac.uk](mailto:FBMH.doctoralacademy.admissions@manchester.ac.uk)

### Equality, Diversity and Inclusion

Equality, diversity and inclusion is fundamental to the success of The University of Manchester, and is at the heart of all of our activities. The full Equality, diversity and inclusion statement can be found on the website: [Equality, diversity and inclusion \(EDI | Postgraduate Research | Biology, Medicine and Health | University of Manchester](#)

### Funding Notes

Applications are invited from self-funded students. This project has a Band 3 (high) fee. Details of our different fee bands can be found on our website <https://www.bmh.manchester.ac.uk/study/research/fees/>

### References

- Schneider H, Brownbill P, Albrecht C (2021) Ex vivo dual perfusion of an isolated cotyledon 1 of human placenta: history and future challenges. *Placenta* 107: 8–12.
- Schneider H, Albrecht C, Ahmed MS, Broekhuizen M, Aengenheister L, Buerki-Thumherr T, Danser AHJ, Gil S, Hansson SRi, Greupink R, Lewis RM, Markert UR, Mathiesen L, Powles-Glover N, Wadsack C, Brownbill P (2022) Ex vivo dual perfusion of an isolated human placenta cotyledon: towards protocol standardization and improved inter-centre comparability. *Placenta* 126:83-89
- Brownbill P, Sebire N, McGillick E, Ellery S, Murthi, P (2018) Ex Vivo Dual Perfusion of the Human Placenta: Disease Simulation, Therapeutic Pharmacokinetics and Analysis of Off-Target Effects. In: *Methods in Molecular Biology – Preeclampsia* Eds: Vaillancourt, C. & Murthi, P. (eds.). 1 ed. Switzerland: Springer/Humana Press, Vol. 1710, p. 173-189 16 p. 14. (Methods in Molecular Biology)

Hide Details

Email Enquiry

Apply Online

1 ELIGIBILITY

2 RESEARCH AREA

3 PROJECT

4 FUNDING

5 SUPERVISOR

6 APPLYING

7 AFTER YOU APPLY

# CONSIDER FUNDING

UOM.LINK/BMH-PGR-WEBINAR-FUNDED



The University of Manchester

## STUDENTSHIPS

  
**MRC DOCTORAL TRAINING PARTNERSHIP**

  
**BBSRC NORTH WEST DOCTORAL PROGRAMME IN BIOSCIENCE**

  
**BICENTENARY PHD STUDENTSHIPS**

  
**PRESIDENT'S DOCTORAL SCHOLAR AWARD**

  
**MEDICAL RESEARCH COUNCIL CoRE IN EXPOSOME IMMUNOLOGY**

  
**INTERNATIONAL PARTNERSHIP PHD STUDENTSHIPS**


  
**CANCER RESEARCH UK MANCHESTER INSTITUTE STUDENTSHIPS**

  
**CANCER RESEARCH UK MANCHESTER CENTRE STUDENTSHIPS & MB-PHD**

  
**ALZHEIMER'S SOCIETY DOCTORAL TRAINING CENTRE**

  
**ENGINEERING & PHYSICAL SCIENCES RESEARCH COUNCIL DTP**

  
**ECONOMIC & SOCIAL RESEARCH COUNCIL NWSS CASE & DTP**

  
**THE KENNEDY TRUST MB-PHD**

  
  
**DUAL-AWARD BETWEEN THE UNIVERSITY OF MANCHESTER AND MELBOURNE**

## SCHOLARSHIPS

  
**EXCELLENCE IN DIVERSITY PHD SCHOLARSHIPS**

  
**UOM-CHINA SCHOLARSHIP COUNCIL SCHEME**

## OTHER FUNDING

  
**INDIVIDUALLY/DIRECTLY FUNDED PROJECTS**

**EXTERNAL FUNDING CHARITIES, TRUSTS, FOUNDATIONS**

**HOME GOVERNMENT FUNDING**

**POSTGRADUATE DOCTORAL LOAN (UK AND IRISH CITIZENS OR SETTLED STATUS, LIVING IN UK)**

**SELF-FUNDING**

- 1 RESEARCH AREA
- 2 ELIGIBILITY
- 3 PROJECT
- 4 FUNDING
- 5 SUPERVISOR
- 6 APPLYING
- 7 AFTER YOU APPLY

# CONTACTING THE SUPERVISOR

[UOM.LINK/BMH-PGR-WEBINAR-SUPERVISOR](http://UOM.LINK/BMH-PGR-WEBINAR-SUPERVISOR)



1 RESEARCH AREA

2 ELIGIBILITY

3 PROJECT

4 FUNDING

5 SUPERVISOR

6 APPLYING

7 AFTER YOU APPLY

# BEFORE YOU APPLY AND APPLYING

[UOM.LINK/BMH-PGR-WEBINAR-APPLY](https://uom.link/bmh-pgr-webinar-apply)

MANCHESTER  
1824

The University of Manchester



1 RESEARCH AREA

2 ELIGIBILITY

3 PROJECT

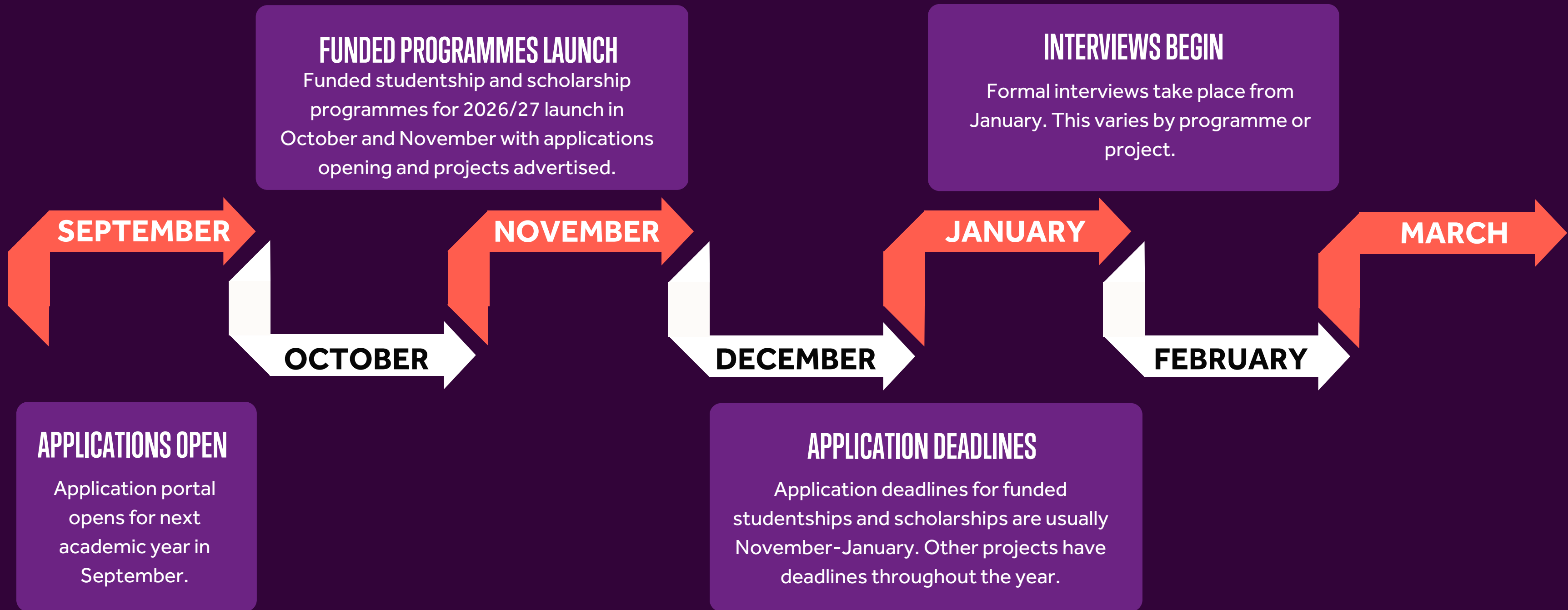
4 FUNDING

5 SUPERVISOR

6 APPLYING

7 AFTER YOU APPLY

# TIMELINE FOR 2026/27 ENTRY



1 RESEARCH AREA

2 ELIGIBILITY

3 PROJECT

4 FUNDING

5 SUPERVISOR

6 APPLYING

7 AFTER YOU APPLY

# AFTER YOU APPLY



# PANEL Q&A

MANCHESTER  
1824

The University of Manchester

GOT A QUESTION?

ADD IT TO THE Q&A CHAT



# *LILY: MY JOURNEY TO POSTGRADUATE RESEARCH*

MANCHESTER  
1824

The University of Manchester

- Studied Music at University of Manchester and Public Health Masters at the University of Sheffield
- Researching sedentary behaviour in older employees working from home
- Chose Manchester for PhD due to support in place for students, and I love living in the city
- Wanting to pursue a career in local council public health



# *SURAIYA: MY JOURNEY TO POSTGRADUATE RESEARCH*

- Studied undergraduate at Ahmadu Bello University Zaria, Nigeria and master's at Texas A&M University, Texas, USA then went into industry.
- Exposure to Nigeria's oil and gas industry revealed significant research opportunities.
- Research project is around Respiratory Protection Programs
- Chose Manchester due to reputation as part of Russell Group and cultural diversity of the university and city.
- Aiming to work as a consultant in industry in future.



# PANEL Q&A

MANCHESTER  
1824

The University of Manchester

**GOT A QUESTION FOR OUR PANEL?**  
**ADD IT TO THE Q&A CHAT**



# NEXT STEPS

MANCHESTER  
1824

The University of Manchester



VISIT OUR WEBSITE TO DISCOVER MORE  
INCLUDING HOW TO APPLY, AVAILABLE  
PROJECTS, FUNDING AND MORE.  
[UOM.LINK/BMH-PGR-WEBINAR-MORE](https://uom.link/bmh-pgr-webinar-more)



SIGN-UP TO OUR MAILING LIST  
TO RECEIVE OUR FUNDING ALERTS, EVENT  
UPDATES AND OUR MONTHLY NEWSLETTER.  
[UOM.LINK/BMH-PGR-WEBINAR-MAILINGLIST](https://uom.link/bmh-pgr-webinar-mailinglist)

# UPCOMING EVENTS

MANCHESTER  
1824

The University of Manchester

NEXT WEBINAR:  
'UNDERSTANDING POSTGRADUATE RESEARCH FUNDING'

1 OCT 25

1PM - 2PM  
(GMT)

'THE IMPORTANCE OF CONTACTING A  
SUPERVISOR'

8 OCT 25

1PM - 2PM  
(GMT)

'THE PGR APPLICANT JOURNEY FOR  
INTERNATIONAL STUDENTS'

29 OCT 25

1PM - 2PM  
(GMT)

POSTGRADUATE RESEARCH  
OPEN DAY

5 NOV 25

12PM - 4PM  
ON CAMPUS

'PHD LIFE IN THE FACULTY OF BIOLOGY,  
MEDICINE AND HEALTH'

19 NOV 25

1PM - 2PM  
(GMT)

'PREPARING FOR A  
PGR INTERVIEW'

8 DEC 25

1PM - 2PM  
(GMT)

BOOK YOUR PLACE [UOM.LINK/BMH-PGR-WEBINAR-BOOK](https://uom.link/bmh-pgr-webinar-book)

BOOK YOUR PLACE [UOM.LINK/BMH-PGR-OPEN-DAY-BOOK](https://uom.link/bmh-pgr-open-day-book)



The University of Manchester

**FACULTY OF BIOLOGY, MEDICINE AND HEALTH  
POSTGRADUATE RESEARCH**

**THANK YOU FOR JOINING US!**

**LET US KNOW YOUR FEEDBACK VIA  
OUR POST-EVENT SURVEY**

**[UOM.LINK/BMH-PGR-WEBINAR-SURVEY](https://uom.link/bmh-pgr-webinar-survey)**

