

- +
 - **Research in the School of Environment, Education, and Development: Structure and Research Groups**



School Highlights

**MANCHESTER SCHOOL
OF ARCHITECTURE**

5th

in world
rankings

MANCHESTER
1824

The University of Manchester



Manchester
Metropolitan
University

**Manchester Institute of
Education** = Outstanding
postgraduate teacher
training courses

The Ofsted Outstanding logo, which includes three stylized human figures in orange above the text "Ofsted Outstanding" in white on a dark blue background.
**Ofsted
Outstanding**

- **Global Development Institute: African Cities Research Consortium** (£32M) FCDO-funded - led by Diana Mitlin
- **Manchester Institute for Education: #BeeWell** (£1.2M) multi-partner GM programme - led by Neil Humphrey
- **Geography: Greenhouse Gas Removal techniques** (£30m) UKRI-funded –UoM engagement led by Rob Bellamy
- **Planning and Environmental Management: Digital Solutions Hub** (£7M) NERC funded – led by Richard Kingston
- **Architecture: Urban Infrastructures in Transition** (£1.3m) multi partner funded – led by Deljana lossifova

+

•

○

REF 2022 Showcasing the breadth and excellence of SEED research

- **Submission of**
- over **300 pieces** of academic work
- **14 impact cases**

-**across our 4 units of assessment (UoA):**
- Architecture, Built Environment and Planning
- Geography and Environmental Studies
- Development Studies
- Education

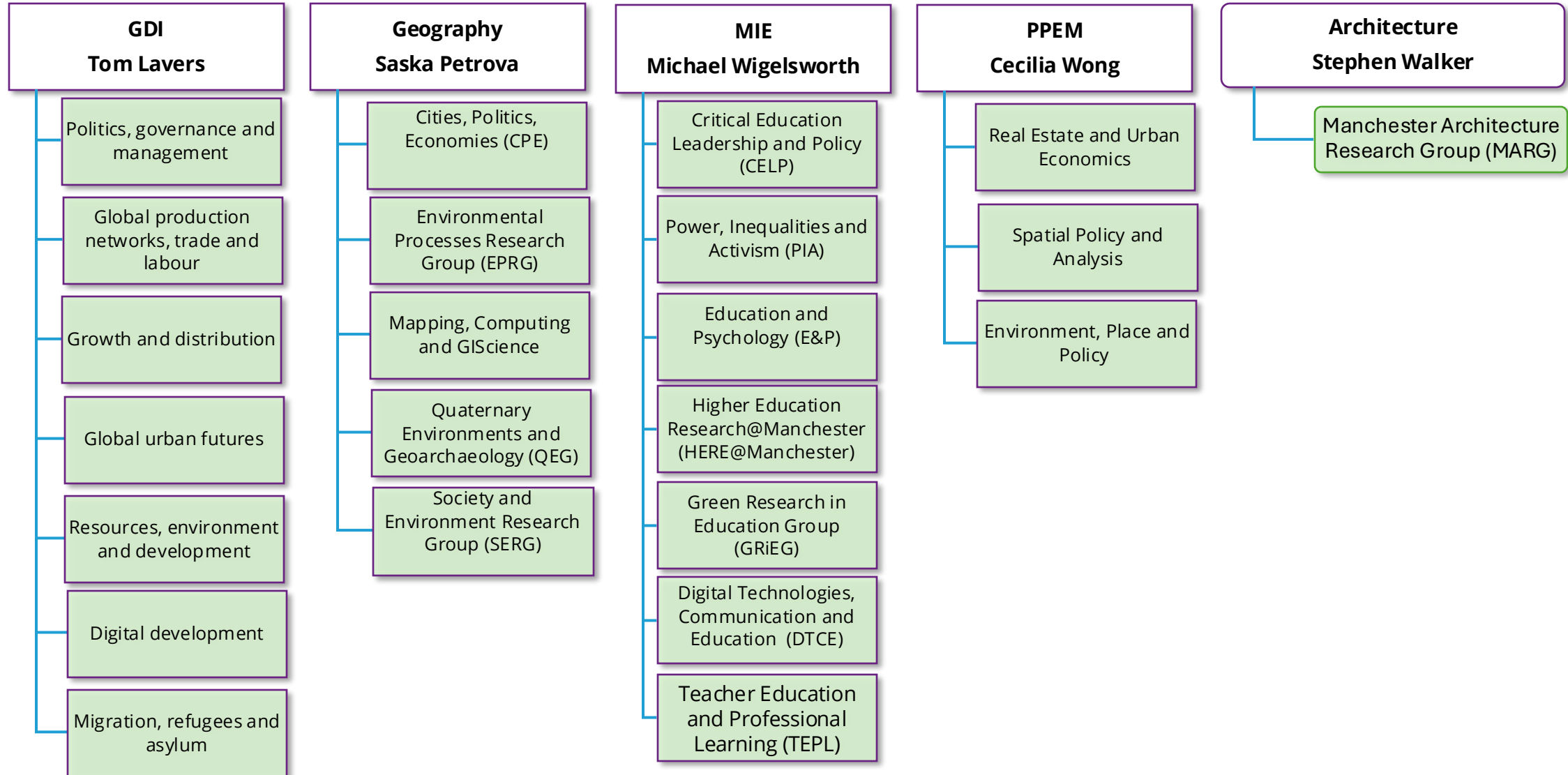
+
• REF 2022
◦ Showcasing
the breadth
and
excellence of
SEED
research

- Major achievements to celebrate across all five of our Departments!
- The Global Development Institute retain their **number two ranking** in Development Studies.
- Architecture and Planning and Environmental Management were **ranked 5th** in their UoA .
- The Manchester Institute of Education was placed in the **top 10**.
- Both Geography and Architecture and PEM achieved **significant rises in their grade point average (GPA) ranking**.

Departmental Research Directors

Department	Name	Email
GDI	Tom Lavers	tom.lavers@manchester.ac.uk
MIE	Michael Wigelsworth	michael.wigelsworth@manchester.ac.uk
Geography	Saska Petrova	saska.petrova@manchester.ac.uk
Architecture	Stephen Walker	s.j.walker@manchester.ac.uk
Planning, Property Environmental Management	Cecilia Wong	cecilia.wong@manchester.ac.uk

Departmental Research Directors and Research Groups



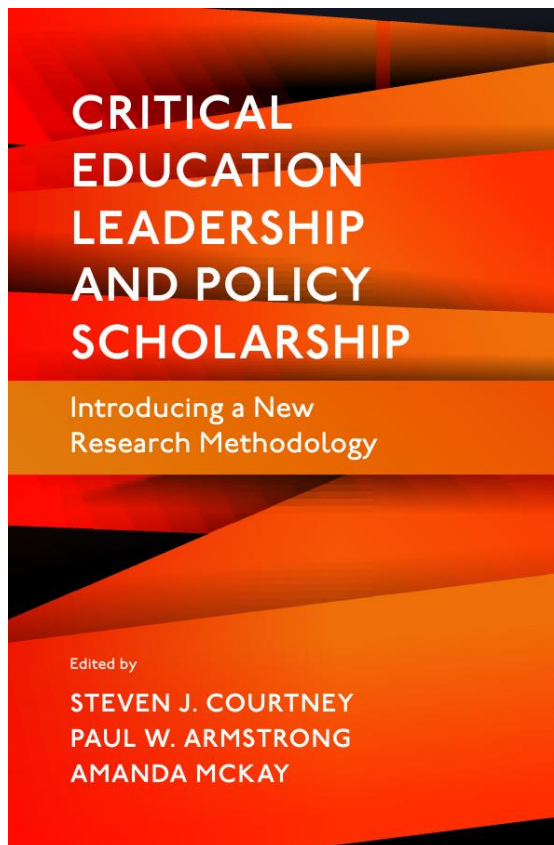


CRITICAL
EDUCATION
LEADERSHIP &
POLICY

The CELP group undertakes globally impactful research in the social sciences. We are particularly interested in confronting attempts to **privatise education** as a **common good** and in considering how **equity** may be achieved **locally** and **globally**. Our values for this work are located in **public education** and **social justice**.

These values influence our concern with the **discourses** and **power relationships** in which children, young people, professionals and **communities** are located.

We explore the ways in which **advantage** and **disadvantage** are mediated by **place**, **intermediary organisations** and other **anchor institutions** to structure agency in **policy design** through to the **practice** and **experiences** of **leaders, teachers, pastoral workers, the third sector** and **young people**.



Our recent research has made contributions to the following areas:

Privatisation of education nationally and globally (e.g., [1](#), [2](#), [3](#), [4](#), [5](#))

Education and its leadership as a **public good** (e.g., [1](#), [2](#), [3](#))

Privatising education leadership (e.g., [1](#), [2](#), [3](#)) and **governance** (e.g., [1](#), [2](#))

Neighbourhood assets (e.g., [1](#), [2](#), [3](#))

Roles, practices & identities of school leaders (e.g., [1](#), [2](#), [3](#), [4](#), [5](#)) and **'followers'** (e.g., [1](#))

Theorising education leadership & policy (e.g., [1](#), [2](#), [3](#), [4](#)) and **change** (e.g., [1](#), [2](#))

Collaborations between schools (e.g., [1](#), [2](#), [3](#), [4](#))

System leadership (e.g., [1](#), [2](#), [3](#))

Gender and education leadership (e.g., [1](#), [2](#))

Mapping the field of ed leadership research (e.g., [1](#), [2](#)), **policy** (e.g., [1](#)) and **governance** (e.g., [1](#))

Contact Prof Steve Courtney: steve.courtney@manchester.ac.uk or Prof Kirstin Kerr: kirstin.kerr@manchester.ac.uk

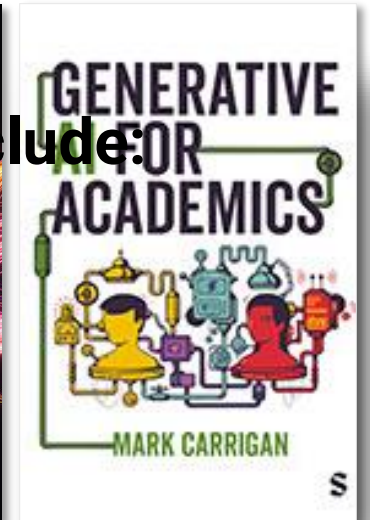
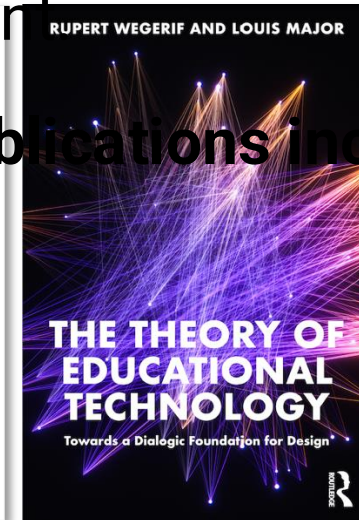
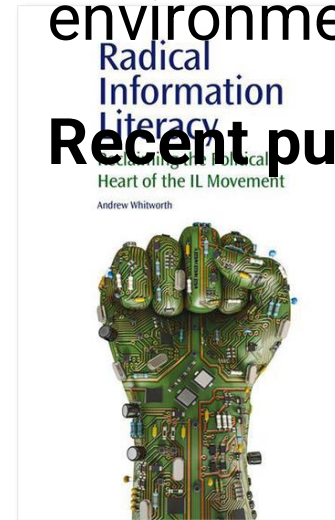
DTCE Research & Scholarship Group

Digital Technologies, Communication & Education

- We explore how digital technologies shape and are shaped by society, culture, and learning across all contexts
- Our interdisciplinary community welcomes researchers from any field who are grappling with digital questions in relation to education, broadly construed.
- Current priority areas:
 - Generative artificial intelligence
 - Digital inequalities
 - Sustainable digital practice

- Regular opportunities for PGRs/ECRs to contribute, share their work, & receive collegial feedback in an inclusive environment

- Recent publications include:



Education and Psychology (E&P):

focuses on the application and critical interrogation of psychology to improve understanding of and inform provision relating to key processes, issues and inequities in educational contexts

Convenors: Ola Demkowicz and Kelly Burgoyne

Contact: ola.demkowicz@manchester.ac.uk; Kelly.Burgoyne@manchester.ac.uk

Mental health and wellbeing in education

Led by Margarita Panayiotou and Ola Demkowicz

Social connection in education

Led by Pamela Qualter and Lily Verity

CLEAR (Cognition and language in education: Application and research)

Led by Kelly Burgoyne and Sarah MacQuarrie

Assessment experiences

Led by Tee McCaldin and Kevin Woods

Teacher Education and Professional Learning (TEPL) RSG



We aim to bring together a wide array of researchers, scholars and practitioners to explore questions related to teacher education and professional learning.

Research and scholarly activities include:

- ✓ **TEPL invites...** - online discussion-based sessions led by experts in teacher ed. and professional learning from inside and outside the University
- ✓ **Reading group meetings**- designed to promote discussion and debate
- ✓ **TEPL workshops**- peer support for scholarly and research activity including abstract writing, how to write blogs, writing retreats
- ✓ **Annual TEPL conference**- showcasing TEPL members ongoing research and scholarly activity

“As an early career researcher, I found the TEPL conference to be **an incredibly welcoming and insightful experience**. It was my first time attending a TEPL event, and I felt fully **included and inspired by the supportive community**.”

“I’ve found the TEPL group to be an incredibly **welcoming and supportive space** for PGRs. I really encourage new doctoral researchers to try out new groups and opportunities like this – it’s **absolutely worth it**.”

“Presenting at the TEPL conference was a valuable opportunity to **share a part of my research, receive constructive feedback, and engage with education specialists**.”

Everyone is welcome!! Contact elizabeth.gregory@manchester.ac.uk, rosa.archer@manchester.ac.uk, andrew.j.howes@manchester.ac.uk or karen.beswick@manchester.ac.uk for more details.

Higher Education Research Group

Focus: Investigating higher education as a process, context, and setting for research across disciplines

Activities: Regular seminars, guest lectures, reading group

Of interest to: Anyone whose research is set within higher education (any discipline or topic!) OR anyone who wants to learn more about how universities function and the nature of academic work

Contact: jenna.mittelmeier@manchester.ac.uk

Green Research in Education Group (GRiEG)

1) Who we are

- An interdisciplinary research group exploring the role of education in addressing climate change and environmental sustainability.
- We bring together PGRs, early-career researchers, and academics working on *green transitions, environmental education, and sustainability practices*.


2) What we do


- Foster collaboration across departments and schools on sustainability-focused projects.
- Support PGRs in developing *green research methods* and integrating sustainability into their work.
- Host seminars, workshops or reading groups.
- Share opportunities for funding, conferences, and publications.

How to get involved:

 Join our mailing list & events.

 Collaborate on projects and publications.

 Share your ideas for building sustainable futures through research.

 Key contacts: Dr Marcellus Mbah (marcellus.mbah@manchester.ac.uk); Sohrab Rezvani (sohrab.rezvani@manchester.ac.uk)

Cities, Politics, Economies RG (geography)

Brings together economic, political,
urban, social and cultural geographers

Peer review and support of each other's
work. Engagement activities with visiting
speakers. Yearly writing retreat co-hosted
with SERG

Contact

jamie.doucette@manchester.ac.uk to sign
up

Bluesky: @cperguom



Environmental Processes Research Group (EPRG)

- **Main focus:** understanding fundamental environmental processes and how they relate to **contemporary environmental challenges**
- Brings together expertise from a **wide range of geographical sub-disciplines**
- Tackles challenging research questions related to **environmental risk and response**
- Main areas of interest: **peatlands** and **ecological resilience**; **wildfires** and biomass burning; **urban green infrastructure** and **nature-based solutions**
- Close collaboration with **practitioners and policymakers**
- Work covers **field experiments, laboratory analyses** and a range of environmental **monitoring and modelling** techniques

How does the group work?

- About 35 people
 - Academics, technicians, PGRs, PDRAs, honorary fellows
- Meet twice a semester
 - Discuss ongoing work, horizon scanning, critical friend, snacks
- Occasional field trip and away day

Group leads



Emma Shuttleworth



Jonny Ritson

Quaternary Environments & Geoarchaeology



*Interested in past climates, landscapes, and/or ecosystems?
And how such knowledge can inform about our climate future?
Like working with all types of proxy data and/or chronologies?
Fieldwork, labwork, statistics, and/or GIS and remote sensing?*



QEG Group Dinner at INQUA 2023 in Rome



Email anna.hughes@manchester.ac.uk to join.

www.seed.manchester.ac.uk/geography/research/groups/quaternary-environments-geoarchaeology/

Society and Environment Research Group (SERG)

- Group with focus on environmental geography, with particular focus on power, culture and political economic change (a critical/radical perspective)
- Social equality and justice integral to environmental question
- A community for professors, ECRs and PhD students, working across world on wide range of issues: water, energy, waste, transport, conservation, climate...
- Activities: Research Spotlight, Work in Progress and Pick Apart
- Geography seminar programme (nominated by SERG)
- Annual writing retreat at Gladstones Library, North Wales (with CPE)
- Teaching on MSc Environmental Governance programme

Group coordinators

Arianna Tozzi
Mark Usher
Noel Castree

arianna.tozzi@manchester.ac.uk
mark.usher@manchester.ac.uk
noel.Castree@manchester.ac.uk



Cities, Politics and Economies (CPEG)

Society and Environment (SERG)

Society and Environment (SERG) seeks to transform dominant analytical approaches to the study of the environment in order to develop just, inclusive, and sustainable transitions to future ways of living on earth.

Members of SERG conduct research into diverse environmental issues, providing key evidence



Spatial Policy and Analysis Laboratory



1. Who We Are

- Established in 1983 by Prof Brian Robson, SPAL (formerly the Centre for Urban Policy Studies)
- A research group in the Department of Planning, Property and Environmental Management
- A home for staff and students across UoM engaged with urban and regional policy research
- 19 academic staff and post-doc researcher & around 20 PhD students

2. What We Do (Research Themes)

- Area-Based Policy, Practice & Governance
- Spatial Analytics, Decision Support, and Digital Planning
- Infrastructure and spatial development

3. Our Approach

- Integrating spatial thinking, methods & techniques into planning, policy, and governance
- Conducting interdisciplinary, policy and application-oriented research
- Bridging research, policy, and practice to provide understanding into and solutions for the grand challenges facing cities and regions

Learn More: [SPA Lab Website](#)

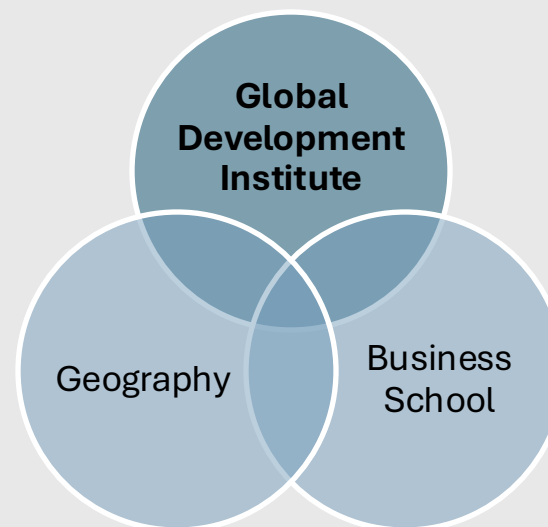
Research Group Coordinator: Helen Zheng (helen.zheng@manchester.ac.uk)

Global Production Networks, Trade, and Labour (GPNTL) Group

The challenge: The organisation of global production is undergoing significant evolution under the influence of Southern actors, more polycentric trade patterns, new technologies, and the challenges of sustainable development.

Our research focuses on:

- South – South trade
- State and Industrial Policy
- Sustainability and Environmental Upgrading
- Dynamics and regulation of Digital Trade
- Evolving geographies of production
- Public and Private Governance in global value chains
- Financialisation and Global Value Chains



Our activities:

- Guest speakers and seminars
- Work-in-progress paper feedback
 - Reading groups
 - Joint research projects
- Awaydays and writing retreats
- Career development workshops
- PGR involvement (i.e. discussant, agenda-setting)

Convenor: Elisa Gambino (elisa.gambino@manchester.ac.uk)

The Growth and Distribution Research Group

- Topics of research:

Macroeconomic topics

- ✓ International commodity markets
- ✓ Economics of climate change
- ✓ Connections between institutional quality and economic growth

Microeconomic topic

- ✓ Social assistance programmes
- ✓ household finances and decision making
- ✓ The economics of education, labour markets, and income distribution

- We make use of extensive quantitative research methods (panel data, time-series, impact evaluation)
- We are very happy to talk to any student considering using some quantitative methods in their research
- Keep an eye out for information about our seminar series (Seminars in Development Economics)
- Contact upasak.das@manchester.ac.uk if you want to be in the mailing list and also for more details about the group.

Migration, Refugees and Asylum research group



- GDI research group open to **anyone interested in any aspect of human mobility**
- Some current research **themes**
 - Migration and social **inequalities**
 - Responses to **refugees** and **asylum** in global south and north
 - Links between migration, **displacement** and global development
 - Migration, **diaspora** and different forms of **citizenship**
- Activities
 - Organising **seminars and workshops**
 - **External speakers** – this semester Prof Jixia Lu (Chinese Agricultural University), Yiqui Huang (Hong Kong University), Sabina Barone (UCL)
 - Staff and PGRs
 - **Conference** on the Migrant Body – December 15-16
 - **Photo competition, arts, literature**
- Research network
 - Drawing together researchers from **across Humanities and wider university**
 - Intersections with **other research groups** – digital development, global production networks, trade and labour ...
 - Members have **extensive network of links across world**
 - Building **new research collaborations**, developing **new research projects**
- Convened by **Tanja Bastia** Tanja.Bastia@manchester.ac.uk and **Oliver Bakewell** oliver.bakewell@manchester.ac.uk.
- Email convenors to join

Photo by Bruna Curcio (Brazil), Photo competition on Transnational migration and Covid19 in Latin America

Resources, Environment and Development Research Group (Global Development Institute)

Topics we research

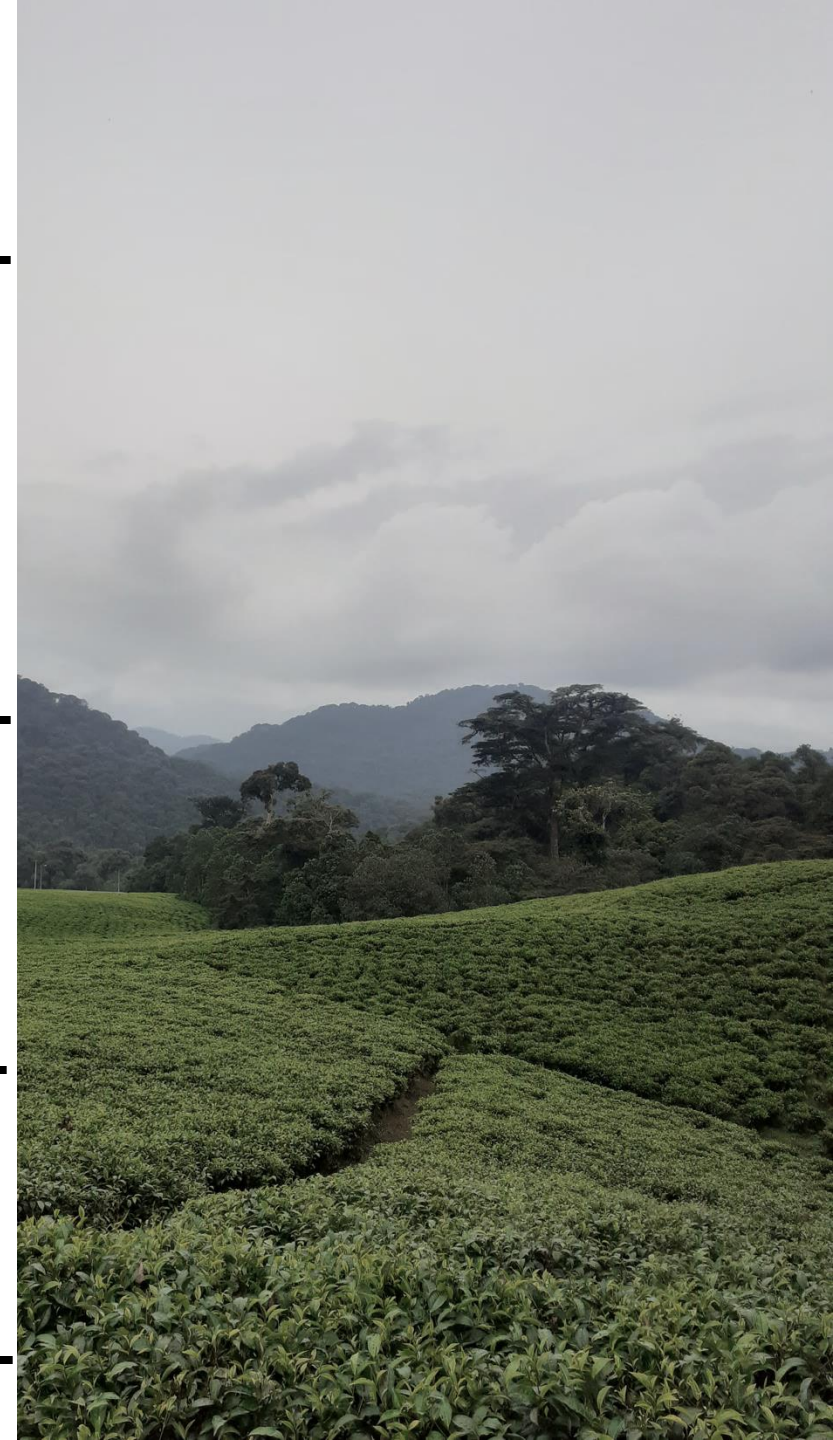
The political/human development/social justice dimensions of water, forests, climate change, biodiversity conservation, mining and extractives, infrastructure development, agriculture, and ecosystem restoration – mainly in countries of the Global South.

Things we do as a research group

Writing sessions; group away days; talks and paper discussions by group members and invited speakers; socials

For questions/to join the mailing list:

Email rose.pritchard@manchester.ac.uk



STATE-SOCIETY RELATIONS

Convenor: Pritish Behuria
Email: pritish.Behuria@Manchester.ac.uk

- The Role of the State in Late Development and Structural Transformation
- The Politics/Political Economy of Environment
- Commodities and Rural Development
- Social Movements and Political Transitions

WHAT OUR GROUP DOES

Book Launches and External Speakers

Followed by Dinner/Drinks

Work-in-progress seminars

Comment on drafts of ongoing work ahead of submission to journal

PhD Friday meetings

Writing Days, Comment on preliminary drafts of ongoing work

Social Events

Manchester Industrial Tour; Away Day; Writing Retreat

DECEMBER 2025:
WORKSHOP ON 'IS DEVELOPMENT STILL POSSIBLE'?
WORKSHOP ON 'RE-ESTABLISHING POLITICAL ECONOMY IN DEVELOPMENT STUDIES'

- Large Funded



Global Urban Futures

- Global urbanisation and urban development
- Urban inequalities and social justice
- Social movements and co-production
- Interdisciplinary membership
- Regular seminars and writing retreats

Contact: Tom Gillespie

(thomas.gillespie@manchester.ac.uk)

