

A systemic approach to inclusive education: the Learning for Every Body project

Christopher Sutton, PhD, SFHEA (he/him)

With:

Dawn Clark, NAAFA, USA

Ni-ka Ford, Enlight Visuals, USA

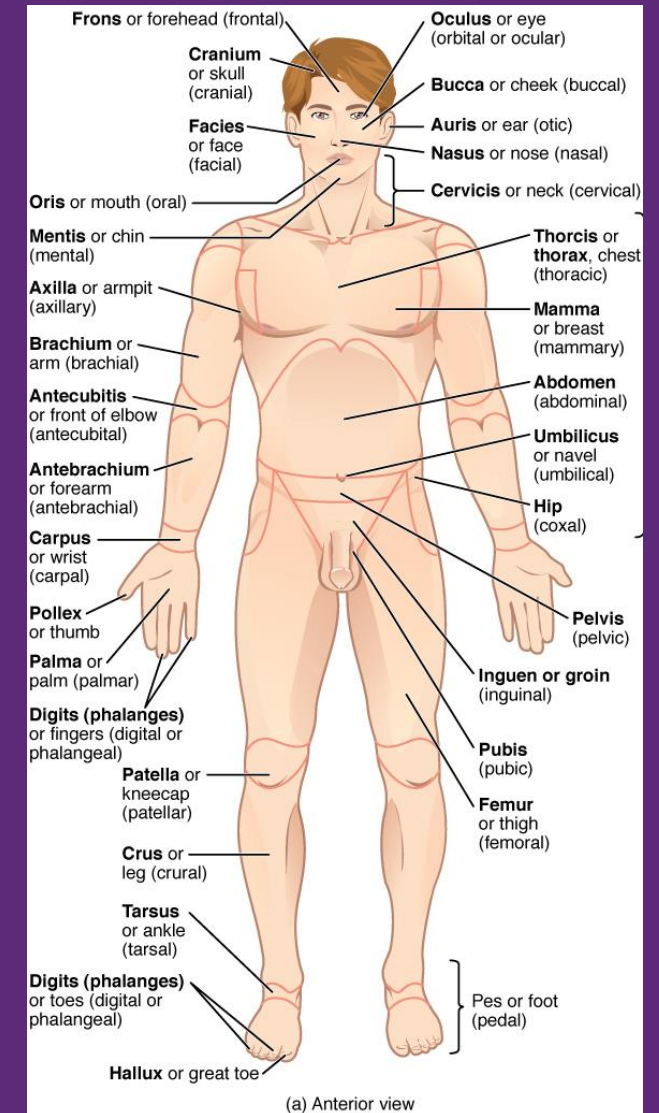
Lois Jane Holt, MBChB, University of Central Lancashire, UK

Diversity in anatomy and medical education



The problem: the 'normal body'

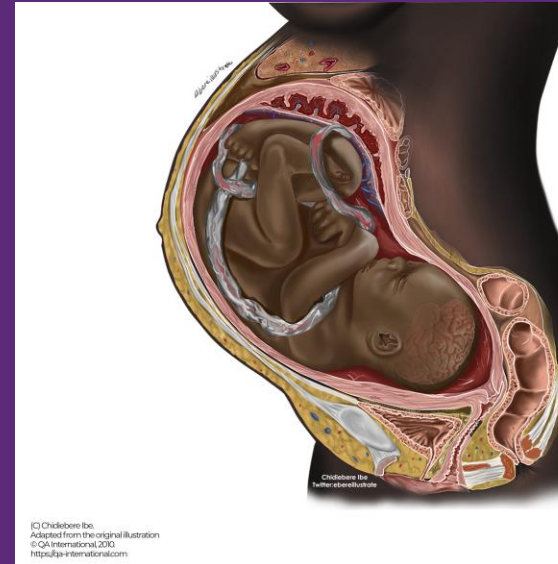
- Underrepresentation and exclusion
- Stereotypes, biases and barriers
- Diagnostic overshadowing
- Empathy decline and multiple dehumanisation



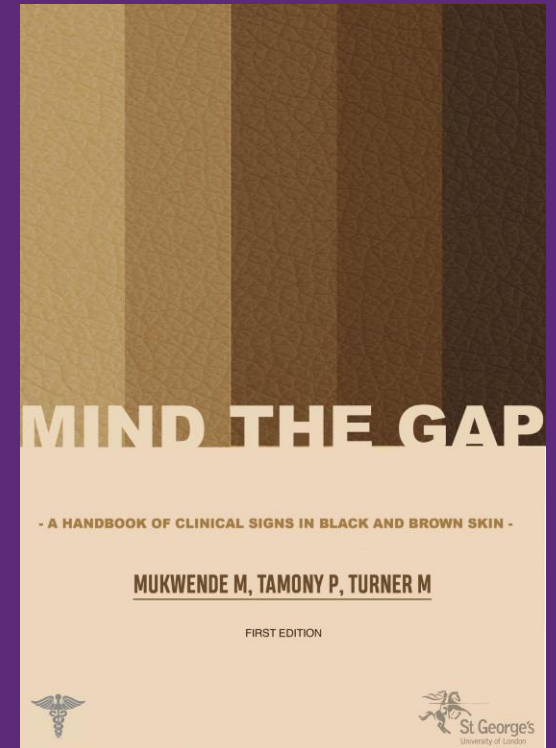
From OpenStax (2013), Wikimedia, licensed under CC3.0 Unported

The problem-solvers and more questions

- Scale of problem
- Siloed work
- Authenticity (and AI)
- Licensing and cost
- Diversity tax and pay



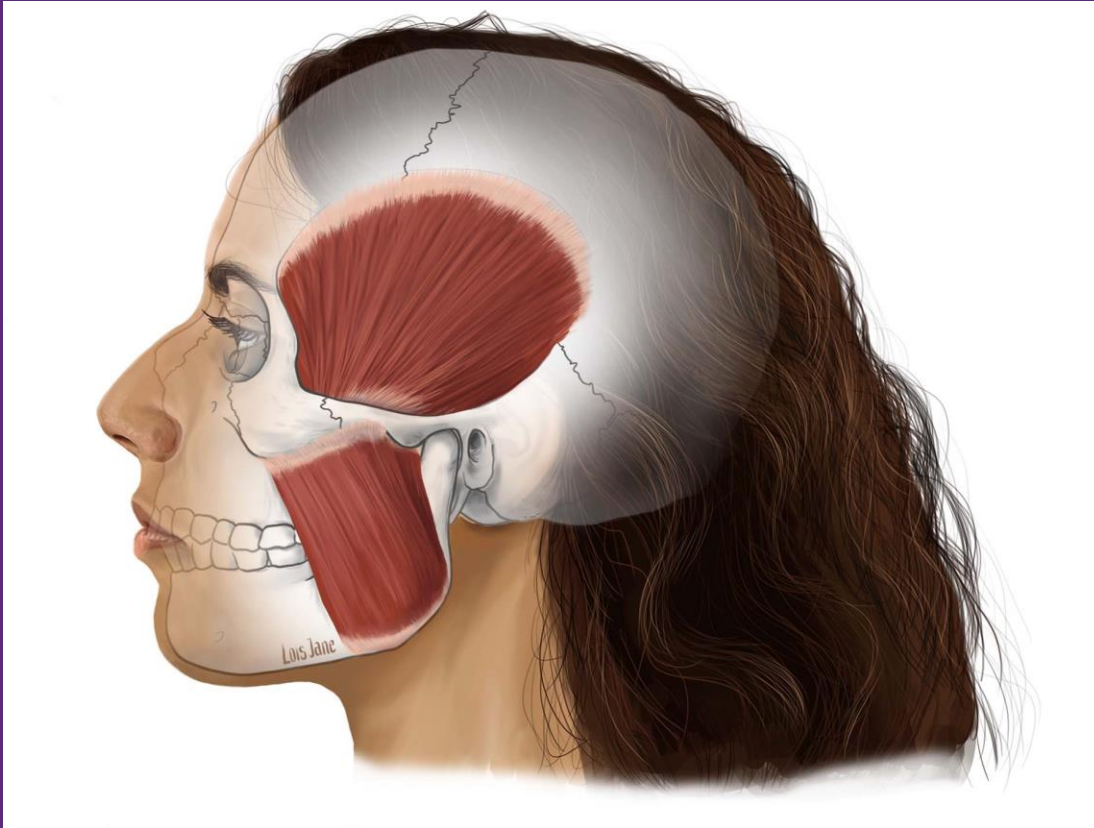
© Chidiebere Ibe. Adapted from the original illustration
© QA International, 2010.
<https://qa-international.com>



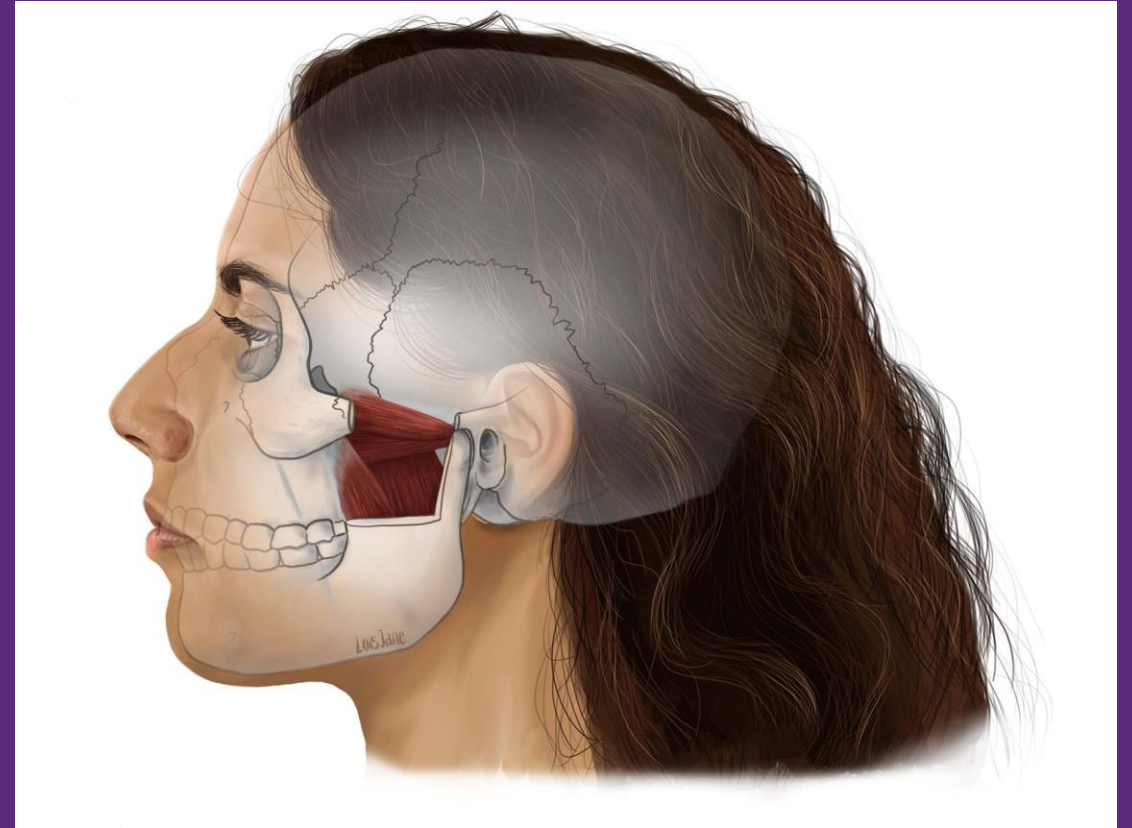
The team

- **Siddhaant Chopra**, student partner intern
- **Karina Fu**, student partner intern
- **Ni-ka Ford**, Enlight visuals
- **Dr Lois Jane**, loisjaneart.com
- **Asiyah Patterson**, formerly Zebedee Talent Agency
- **Dawn Clark**, National Association to Advance Fat Acceptance

The illustrations (Lois and Asiyah)

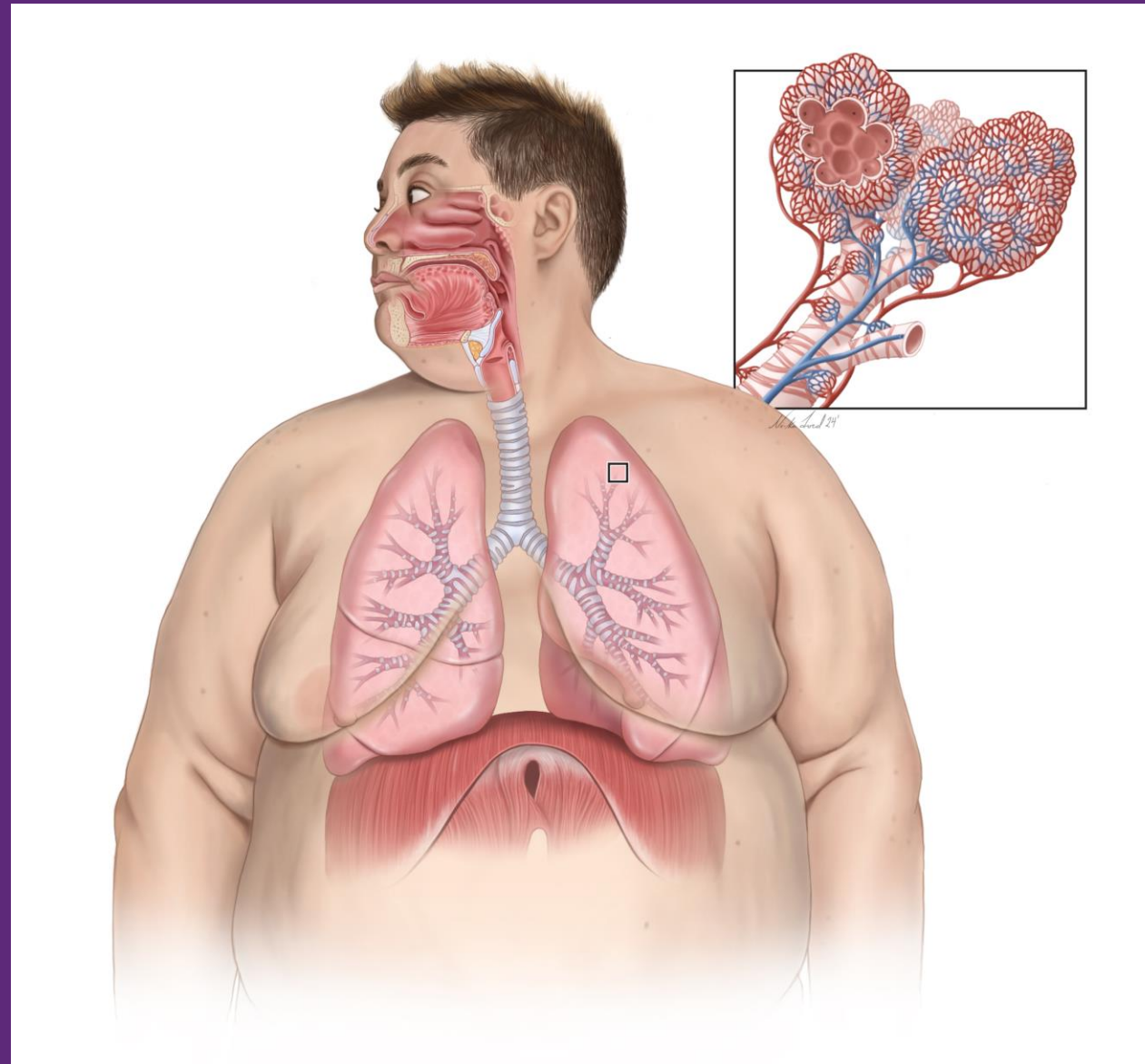


'The Muscles of Mastication 1' by Lois Jane. Used with permission from Lois Jane Copyright © 2024



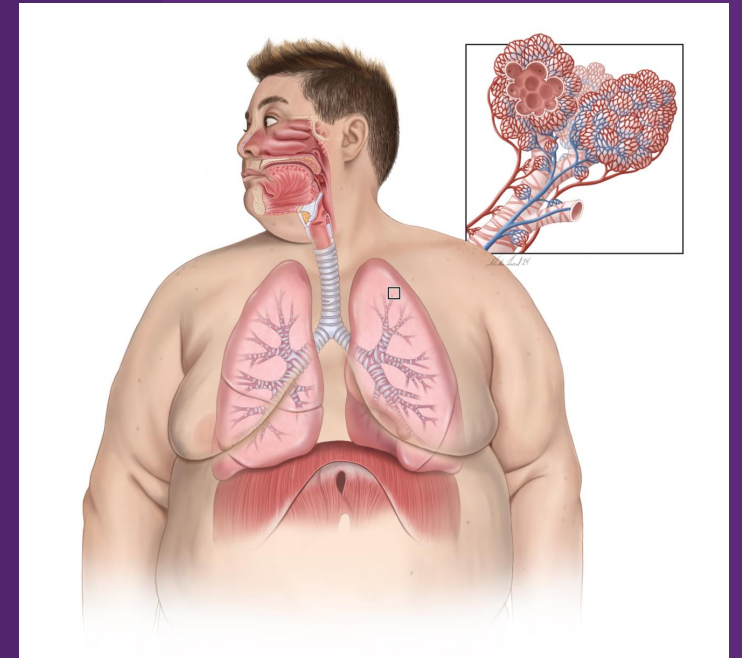
'The Muscles of Mastication 2' by Lois Jane. Used with permission from Lois Jane Copyright © 2024

The illustrations (Ni-ka and Dawn)



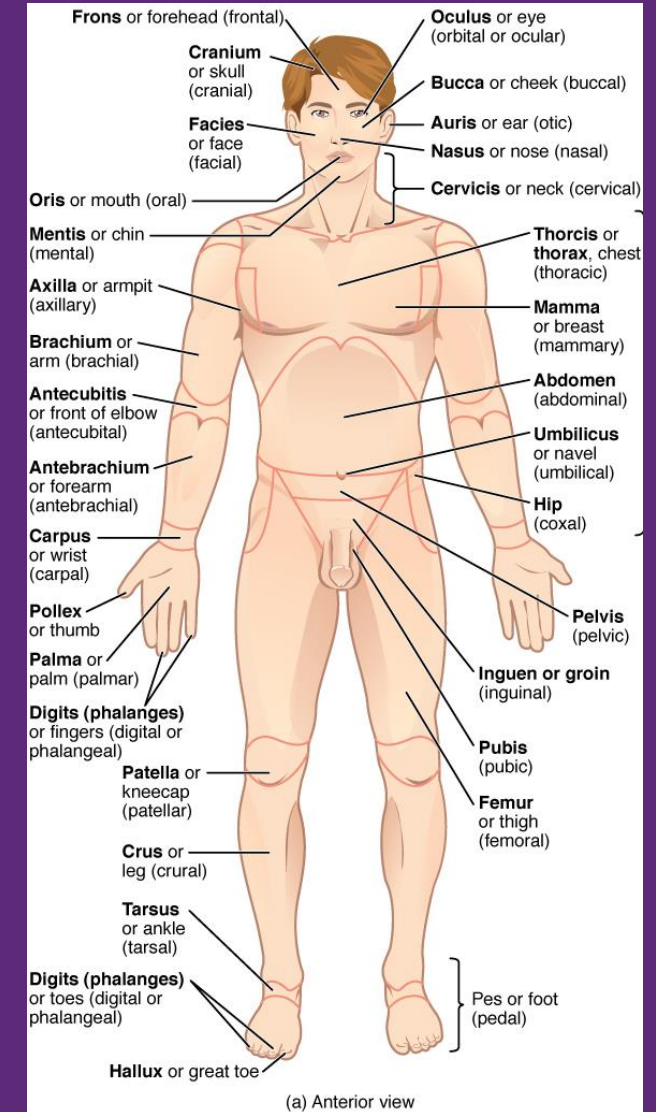
Respiratory system by Ni-ka Ford. Used with permission from
Ni-ka Ford Copyright © 2024

Improving inclusivity through intersectionality



Systemic questions

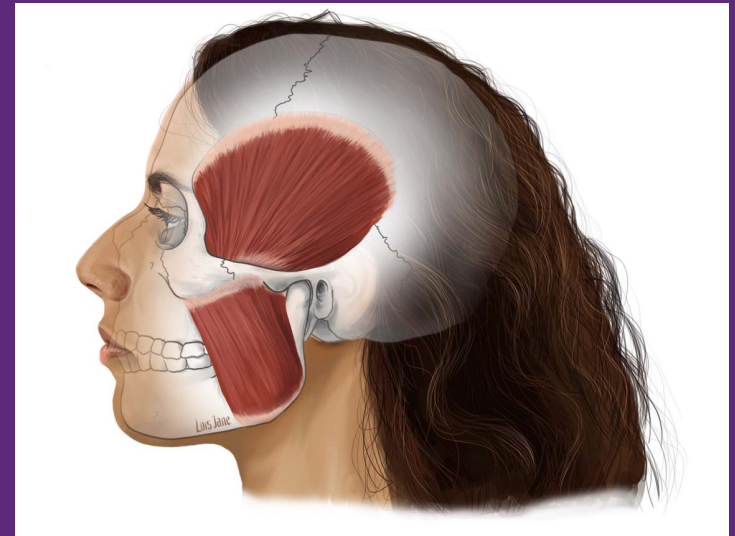
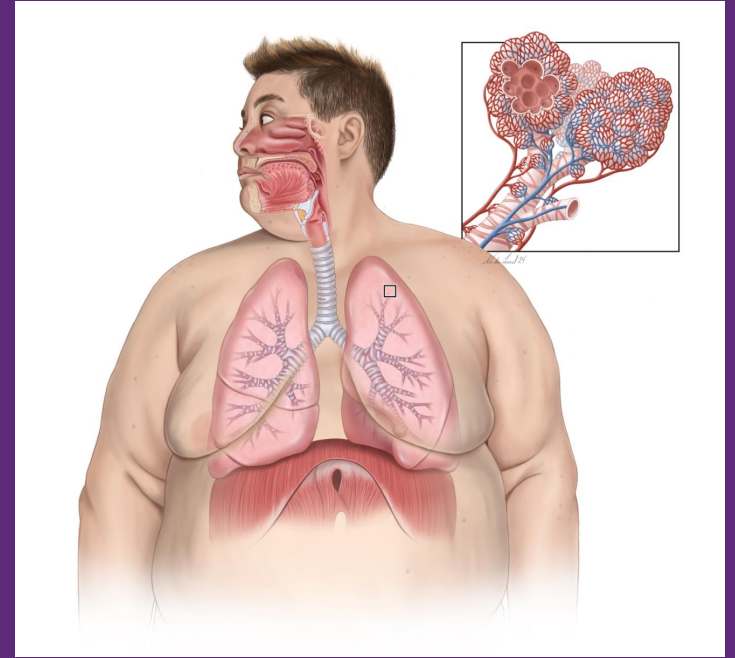
- **Who's not included?**
 - Educate yourself: listen and research
- **Why and how are they excluded?**
 - Understand histories and systems, including your positionality
- **What would equity/justice look like?**
- **How to disrupt exclusionary systems?**



From OpenStax (2013), WikiMedia,
licensed under CC3.0 Unported

Systemic solutions

- Transgressive collaboration
 - Authenticity through real models
 - Fairness (especially pay)
 - Protection of interests (especially license and contract terms)



Links to check out...

- [Ni-ka Ford](#), Enlight Visuals
- [Lois Jane](#)
- [National Association to Advance Fat Acceptance](#)
- [Zebedee Inclusive Talent Agency](#)
- [Mind the Gap](#)
- [Illustrate Change](#)
- [Black in Anatomy](#)
- [Anatome](#)