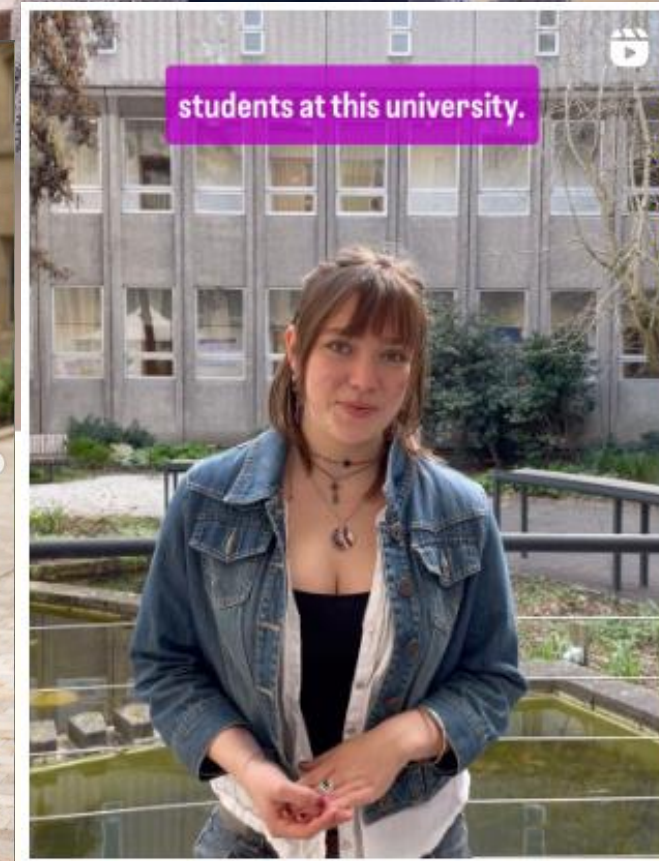
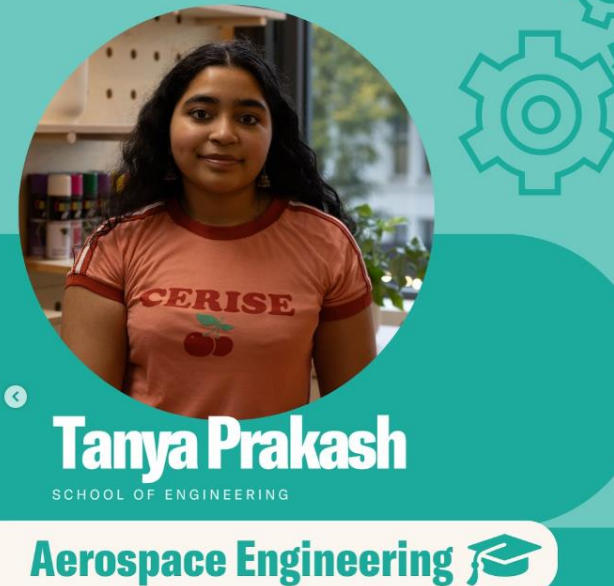


School Reps – What's It All About?





Emma Hollenberg
(she/her)
SU Education Coordinator

University of Manchester Students' Union

- Completely independent organisation and registered charity
- Directed by 8 officers – elected annually by students
- 100 full-time staff and 400 student staff

Education Team

- 4 Officers
- 1600 Academic Reps
- 9 School Reps

The Evolution of the School Rep Role

- Volunteering role until 2023
 - Reliability
 - Engagement
 - No oversight or management
 - Relationship with the university
 - Profile and reputation

What are School Reps?

Representation

Influencing

Community

- 1 per School
- Recruited, employed and managed by the Students' Union
- Paid role (NLW) – approx. 15 hours pcm

Academic Wins

- Academic advising, employability, marking rubrics, teaching sustainability
- University policy consultations
 - Undergraduate and Postgraduate Degree Regulations
 - Framework for Credit Transfer and Grade Conversion for Study Abroad
- Teaching / programme reviews
 - Medicine, Civil Engineering, Geography

Working with Academic Staff

- Committees/Boards
 - School Boards
 - Teaching and Learning Committees
- Meetings with Vice-Deans, Heads of Schools and Directors
- Workshops and Away days
 - FBMH SLT Away day
 - Humanities Leadership Conference
- Interview panels
 - Vice-President for Teaching, Learning and Students
 - Dean of FSE
- University podcasts
- NSS promotion and other social media content



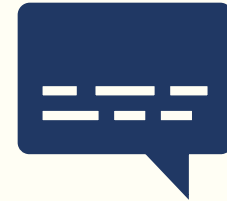
Gathering Meaningful Feedback



School Rep-led feedback
events



FSE: Faculty Forum



Using social media and
Schools' Community Sites to
close the feedback loop

Fostering a Sense of Belonging





Academic Reps Ball



- Boardgames
- Origami
- Basketball tournament
- Cultural Day
- Escape rooms
- Tote bag painting
- Quizzes
- Academic Community Grant Panel



Beyond

- 77% of reps know their School Rep (compared to 48% previously)
- Progress into other roles at university
- LeadMCR
- Office for Students Strategy 2025-2030 consultation
- Department for Education

What Made These Wins Possible?



Reflections to Take Forward

Working with School Reps supports better decisions

Student voice is strongest when it's student led

Trust and partnership matter

You have power to amplify their impact – welcome them into spaces
