



Science and Engineering Fellowships: Why choose The University of Manchester?

This document has been produced by the [Faculty Research Development and Innovation team](#) and is a guide for crafting compelling 'Why Manchester?' sections in fellowship and grant applications.

FSE researchers address global challenges through interdisciplinary collaboration and fundamental research, combining expertise to tackle issues in advanced materials, biotechnology, energy, and global inequalities. Our research also drives innovation in emerging sectors like AI, quantum technologies, and telecommunications.

[Find out more about the Faculty of Science and Engineering.](#)

The following pages highlight our institutional strengths in key areas of research and innovation, impact, facilities, career development and Professional Services support. They provide background information and links to relevant content; you should not copy the contents verbatim in your application.

It is crucial that your application is unique, with detail relevant to your proposal alongside more generic institutional information. For example, names of key academic collaborators at Manchester, unique state-of-the-art research equipment or facilities you would utilise in your project, or particularly relevant training.

Research Excellence

- Through the collective expertise of our interdisciplinary research [institutes and centres](#), our community collaborates to deliver real world solutions.
- [Tomorrow Labs](#) is the largest collection of science and engineering facilities in any UK institution, open for collaborative work with industry partners to find real solutions to global challenges. The labs' unrivalled capabilities and scale means that you can be at the forefront of change. See more information our research infrastructure [here](#).
- The University's [Office for Open Research](#) supports researchers to embed principles of transparency and rigour into their research in order to enable collaboration, and the reuse and reproducibility of research findings.
- The University is a founding signatory of the [Technician Commitment](#). There are almost 900 highly-skilled Technicians operating across our three faculties to provide support for teaching, research, infrastructure, core facilities, workshops and laboratories.
- [Research IT](#) provides highly specialised IT services to University of Manchester researchers. This includes research platforms and infrastructure such as the Computational Shared Facility, research software engineering, support and training, and secure data storage. UoM researchers can also access regional and national compute resources like the [N8 CIR](#).
- Our [Safety Services](#) team are dedicated to ensuring a high standard of safety management with the aim of driving continuous improvement. All colleagues have access to a local Safety Advisor who can provide guidance and sign-post to resources relevant to individual research areas.
- The University provides a comprehensive support service in relation to regulatory compliance. This includes the [Information Governance Office \(IGO\)](#), [Export Controls Team](#) along with a breadth of [guidance on licensing and certification](#).



First in Europe

For social and environmental impact (*Times Higher Education Impact Rankings, 2024*).



Second in world

For social and environmental impact (*Times Higher Education Impact Rankings, 2024*).



Only university

Globally, to rank in the top 10 in every year of the *Times Higher Education Impact Rankings*.

93%

of research activity was 'world-leading' (4*) or 'internationally excellent' (3*)

31

One of the broadest submissions of any university in the UK (31 subject areas)

5

Ranked 5th in the UK in terms of research power

REF 2021 Research Excellence Framework



Career Development

The University is a signatory of the [Researcher Development Concordat](#). Our [Researcher Development team](#) offers a range of professional development programmes to help researchers reach their potential. These include:

- An academic mentor within your department.
- Opportunities to supervise PhD students with training provided to support this.
- Training in [Research Integrity](#).
- [University of Manchester Advance HE Fellowship Scheme](#) which is open to all colleagues.
- The [New Academics Programme \(NAP\)](#), where this is applicable to your fellowship programme, staff can be awarded a Fellowship of the Higher Education Academy (FHEA), on completion.
- A [PGCert in Higher Education](#). *
- A career mentoring scheme – [Manchester Gold](#) – which runs annually and is open to colleagues at all levels.
- A range of management and leadership skills training such as [Managing at Manchester for Researchers](#), [Leading for Research Fellows](#) and the [Aurora Leadership Development Programme](#). *
- [Corndel Apprenticeships](#) in leadership and change management. *
- [A Summer internship programme](#) run by the Faculty which provides hands-on support for projects within Departments. *

Please check with your proposed mentor/supervisor as to the suitability of your proposed training plan as not all of the above are applicable to all fellowships.

* Indicates that this scheme may have a limited intake and you will need to apply.

Research culture at the University (I)

- Our pioneering research stands at the forefront of global efforts to address [Sustainable Development Goals](#). Manchester is only university in the top 10 in the world in both the [QS World University Sustainability Rankings](#) and [Times Higher Education Impact Rankings](#).
- The University is committed to ensuring that labs, workshops and technical spaces operate sustainably and this includes working towards a [Laboratory Efficiency Assessment Framework \(LEAF\)](#) award.
- Interdisciplinary Faculty structures, including Institutes, Centres and Departments, strive to tackle key challenges, drive innovation, and create collaborative, world-changing solutions. Find out more about our interdisciplinary research activity [here](#).
- You can discover the breadth of the real-world impact of FSE research [here](#).
- [Research Explorer](#) enables you to discover the University's publications, impact and activities along with recording your own.
- The University's [research culture and environment hub](#) brings together support, resources, case studies and spotlights.
- Dedicated internal funding streams for researchers to build research independence, develop collaborations and disseminate their research.

Operational support for Research

- The [Faculty Research Development and Innovation Team](#) can provide support a range of strategic research-related initiatives. These include applying for high-value and/or strategic funding, developing your research impact, industry engagement and internationalisation.
- The [Research Services](#) team provide expertise in grant funding, guiding academic colleagues through the entire project lifecycle. Support includes application submissions, award mobilisations, and managing project adjustments.
- Dedicated support for European funding schemes like [Horizon Europe](#).
- Monitoring of research performance against budget is facilitated by School Finance Officers working within the [Research Finance team](#).

Research culture at the University (II)



Social Responsibility

- We are committed to [social responsibility](#) and making a positive difference to society and the environment through teaching, research, public engagement campus operations.
- We hold a [Platinum Watermark](#) award from the [National Co-ordinating Centre for Public Engagement](#) (NCCPE) for the effective ways in which we work to engage society with our research, teaching and culture.

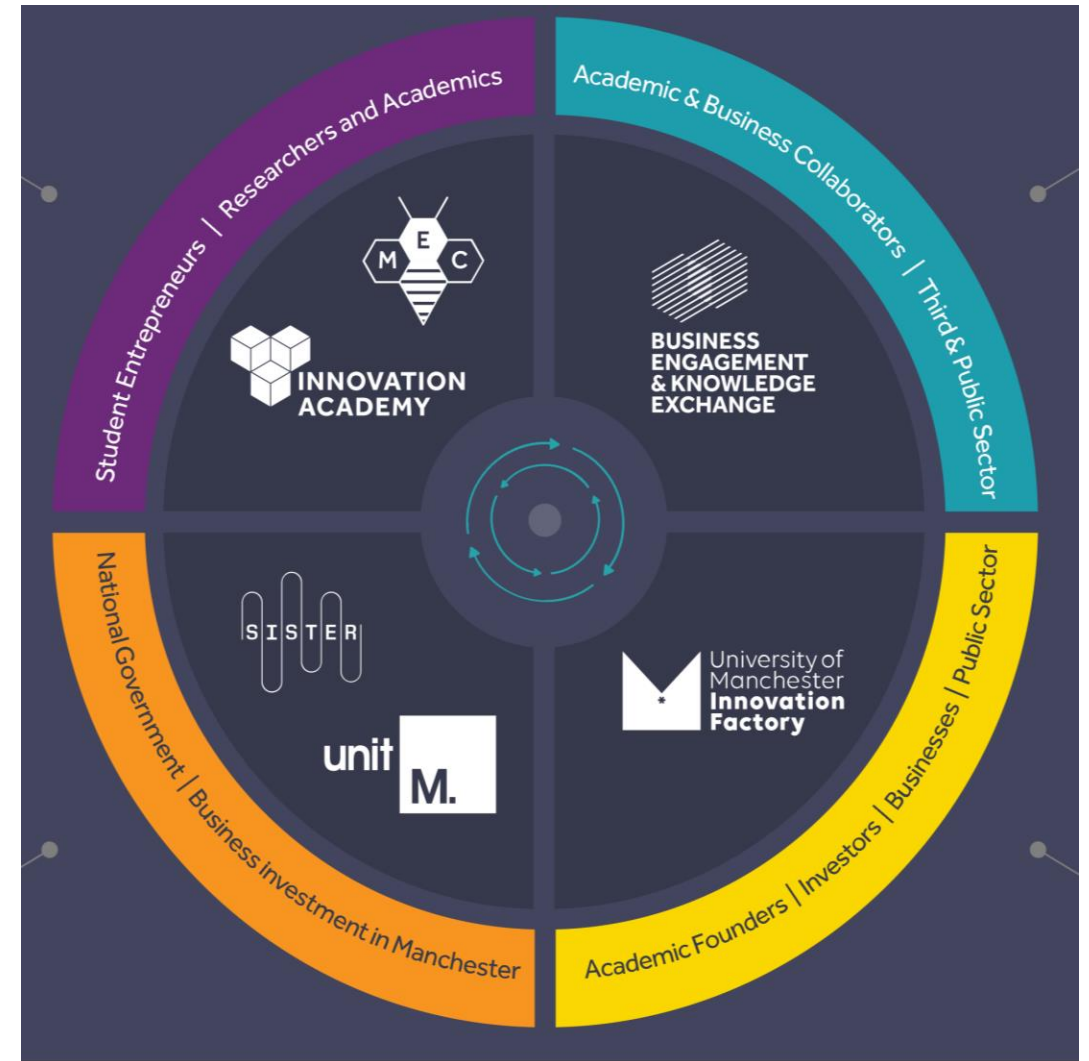
Equality, diversity, inclusion and accessibility

- Inclusion is a [strategic priority](#). The University is a [disability confident employer](#) and holds numerous [diversity awards](#). This includes bronze and silver [Athena Swan](#) certification, Stonewall, and silver status for the [Race Equality Charter](#).
- There are a number of Staff Network Groups that meet regularly and feed into the central EDIA committees.



Innovation

- [Unit M](#) is transforming how the University partners with startups, scale ups and industry to strengthen the region's innovation ecosystem. Designed to drive regional innovation their mission is to solve the UK's growth and productivity challenge.
- [The University's Business Engagement and Knowledge Exchange](#) team brings world-leading academic excellence into real-world impact by bringing people together to make and do things that matter. This can include facilities use, consultancy and collaborative projects.
- Researchers can access support for commercialisation and the management of intellectual property from [The University of Manchester Innovation Factory \(UoMiF\)](#).
- [The Innovation Academy](#) support researchers to access knowledge, expertise and an entrepreneurial community which can enable you to commercialise your research.



Impact and Engagement



Times Higher Education
Impact Rankings
2024 TOP 10



- [The Impact team](#) provide support for developing impact plans, embedding impact into grant submissions, amplifying research impact beyond academia.
- The [Faculty Communications team](#) support the dissemination of research findings and their impact to internal and external audiences.
- The University of Manchester's policy engagement institute [Policy@Manchester](#) connects researchers with policymakers. It aims to impact lives globally, nationally, and locally through research-informed evidence and ideas.
- Colleagues working across the Faculty are involved in a wide range of public engagement projects. This includes, for example, [Prof. Lynne Bianchi](#), Vice Dean for Social Responsibility, Equality, Diversity, Inclusion and Accessibility who established the [Great Science Share for Schools](#) programme.