

MANCHESTER
1824

The University of Manchester

THE SCHOOL OF ENVIRONMENT, EDUCATION AND DEVELOPMENT

UNDERGRADUATE COURSES





facebook.com/uomhums



linkedin.com/uomhums



instagram.com/uomhums



tiktok.com/@uomhums

STUDENT BLOGS

The best way to find out about what studying with us is like. Scan the QR code below or use link:

uom.link/humanities_blogs



Contents

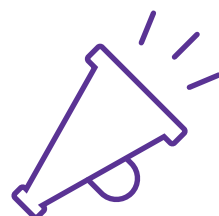
WELCOME TO MANCHESTER	04-07
SCHOOL OF ENVIRONMENT, EDUCATION AND DEVELOPMENT	08-09
ARCHITECTURE	10-15
MANCHESTER INSTITUTE OF EDUCATION	16-23
ENVIRONMENTAL MANAGEMENT	24-27
GEOGRAPHY	28-33
GLOBAL DEVELOPMENT	34-37
PLANNING AND REAL ESTATE	38-41
YOUR FUTURE	42-43
FUNDING AND SCHOLARSHIPS	44-45
STUDENT SUPPORT	46-47

Your world is about to change, so choose a world-changing university



Europe's leading institution for action on sustainable development

(Times Higher Education Impact Rankings 2024)



The 2nd most targeted UK university by top graduate employers

(High Fliers Report 2024)



26 Nobel Prize winners among current and former staff and students



400 societies formed by students

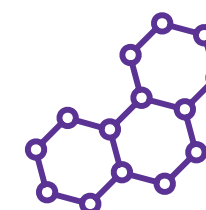


6th in UK, 10th in Europe, 34th best university in the world

(QS World University Rankings 2025)



Over 40,000 students, from over 170 countries



Cutting-edge research and award-winning teaching



**DISCOVER MORE
TAKE A LOOK AT OUR
DIGITAL PROSPECTUS:**

Scan the QR code or use this link:
uom.link/ug_prospectus

Manchester - ahead of the game

Where Manchester treads, the world follows. Ask any of the people who live and work here.

There are many reasons why Manchester is renowned across the globe. But to the people that live here, it's simply known as home. With its indisputable charm and welcoming communities, you'll find it quickly becomes your home too.

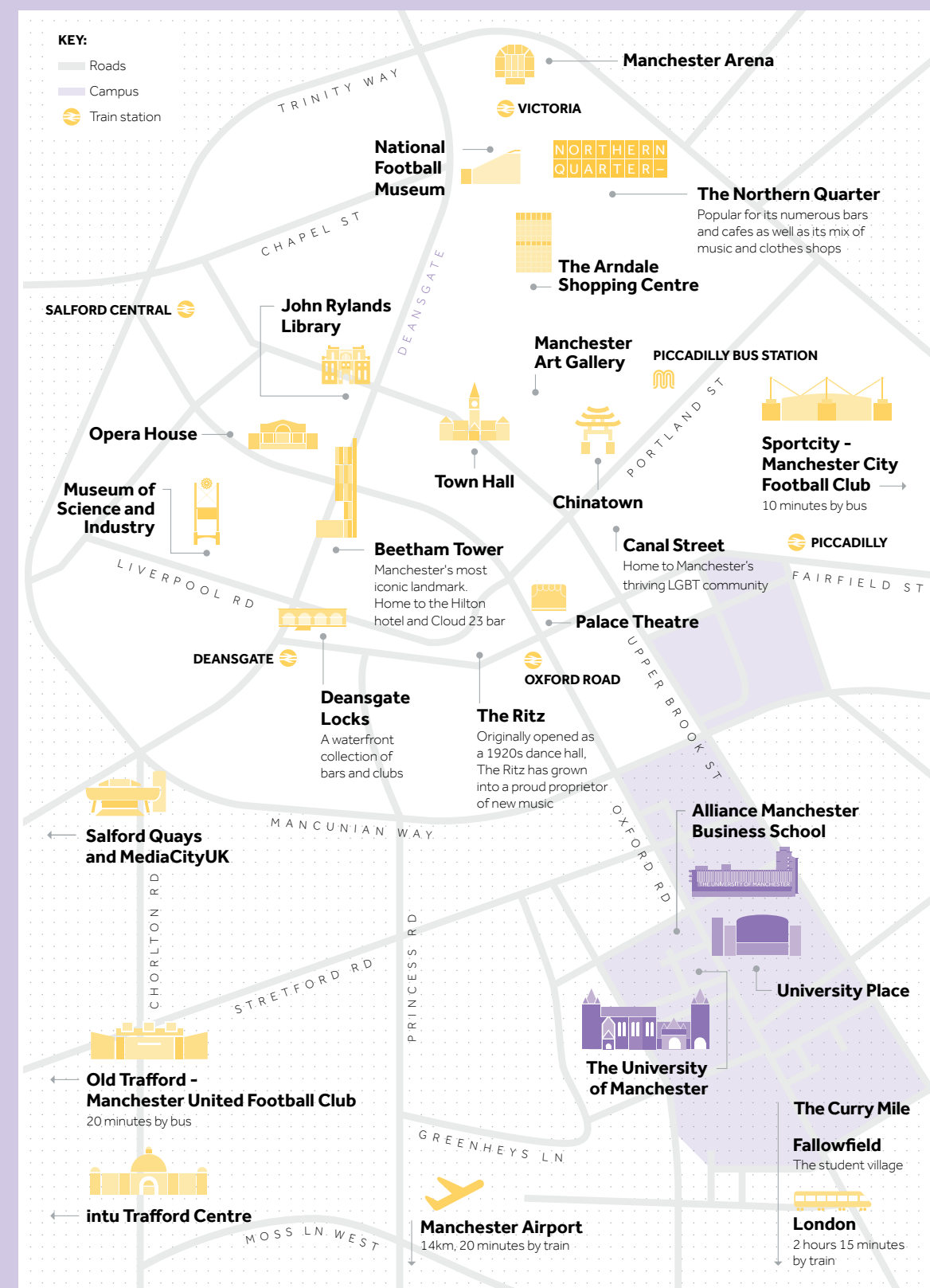
- **The ultimate student city** with one of the largest student populations in Europe (>99,000)
- The University of Manchester is **one of the most popular universities in the UK** in terms of applications to our degree courses (End of Cycle Data 2024, UCAS)
- One of the most diverse cities in the world with **over 150 languages spoken** (The Multilingual Manchester project 2010-2021)
- Home to the UK's third largest airport with direct flights to **over 190 destinations worldwide**
- **A musical hotbed** – The 1975, Aitch, Bugzy Malone, Blossoms, Oasis, Pale Waves, The Smiths and The Stone Roses are just a few artists who have their roots in Manchester.
- **World-class sports facilities** including the Aquatics Centre and National Cycling Centre
- **19% lower cost of living** compared to London (source: Numbeo, 2025) but only two hours away from the capital by train
- **Home to MediaCityUK** – a leading international hub for the creative and digital sectors

A CITY OF FIRSTS



1st

Where Rolls met Royce, the nation's first free public library opened, and the home of Britain's first Urban Heritage Park



School of Environment, Education and Development

Our courses are designed to empower you to make a meaningful impact—both in your future career and in society. With a strong emphasis on practical experience through placements and field courses, you'll graduate ready to take on real-world challenges and contribute to positive change in your community and beyond.

Join us in influencing the grand challenges of this century, notably poverty eradication, securing social justice, environmental change and sustainable urbanism.



Put your learning into practice on professional placements

£2.5k

scholarships available
(see page 44)



Gain skills employers value with RICS and RTPi accreditation
(see page 41)

1,100+

undergraduate students from over 45 countries



Get an international perspective with international study or field courses

2x

Architecture students benefit from our unique collaboration with Manchester Metropolitan University - gaining twice the facilities, expertise and support



"The most important thing that helped me secure my job was the end of year degree show. With architects coming from across the country to view students' work, this event is a great way of networking and presenting your design to potential employers. This is how I got my job!"

HANNAH, BA ARCHITECTURE GRADUATE

Architecture

Architecture is a course offered by the innovative collaboration between two universities - The University of Manchester and Manchester Metropolitan University - forming the internationally renowned Manchester School of Architecture (MSA). You'll become a student at both universities and your degree certificate will be endorsed by both institutions. You'll benefit from facilities and resources across the two universities - having access to the libraries, workshops and materials stores on both campuses.

Manchester School of Architecture is characterised by excellence, ambition, boldness, inquisitiveness, innovation, social justice and responsibility. These facets generate a unique blend and balance between research led teaching, impressive and relevant research outputs, and extensive professional industry links, all of which encourage our students to cultivate their own unique approach to architecture and their careers thereafter.

COURSE LISTINGS

BA(Hons) Architecture (RIBA Part 1) 3 Years

BA(Hons) Architecture (RIBA Part 1) with foundation year 4 years

*Preparatory foundation year for qualifying candidates who meet specific admissions criteria.

RANKINGS



Top 5

Ranked 5th in the world for Architecture (QS 2025)

COURSE DESIGN - BA ARCHITECTURE

Our degree is designed to foster critical thinkers and engaged citizens. You will find yourself in an exciting environment that will nurture your ambitions, equip you with a broad range of skills, and empower you with the necessary knowledge to face the present and future challenges in the field of architecture and the built environment.

We combine traditional lecture-based teaching with workshop and design studio sessions. Project based learning is the basis of architecture education, and the studio is where this learning takes place.

The course has strong links with architectural practices across the North West and involves architectural practitioners in teaching.

YEAR ONE

You will start with a series of small projects where you will accumulate knowledge about the body in space and the design of small enclosures for specific activities. These studio-based projects are supported by a skills programme where the essentials of drawing, modelling and software based representation are taught. To complement studio which runs all year, you will learn about Histories of Architecture, Sustainable Urban Futures, learn about building Technologies and take part in Collaborative Practice with live projects in the city.

YEAR TWO

Your design knowledge will deepen, integrating urban theory and specialist sustainable teaching with increasing complexity, preparing you for your final year of study. We will also broaden your awareness of professional issues, resources and alternative technological solutions.

YEAR THREE

Bringing together your learning from previous years, you will arrive at a theoretical position and evolve a year-long, personal design project supported by our unique 'atelier' system. We prepare you for practice in industry through employability sessions and events, culminating with the end of year show.



DISCOVER ARCHITECTURE

Scan to hear directly from our students about what makes this course special or use this link: uom.link/architecture_video



Scan to discover more about our Architecture courses or use this link: uom.link/architecture



STUDENT LIFE

EXAMPLE FIRST YEAR TIMETABLE

MONDAY	9am - 10am Design 1 Lecture	10am - 1pm Design 1 Studio session	1pm - 2pm Lunch @ Students' Union	2pm - 5pm Design 1 Studio session
TUESDAY	9am - 1pm Self directed: Design 1	1pm - 2pm Lunch @ Zaytoni	2pm - 5pm Self directed: Design 1	5pm MSSA Life drawing
WEDNESDAY	10am - 1pm Architectural Digital Design	1pm - 2pm Lunch in All Saints Park	2pm - 4pm Co-works drop in design chat	4pm - 5pm Swim @ Manchester Aquatics
THURSDAY	10am - 12pm Histories of Architecture lectures	12pm - 2pm Lunch @ Viet Shack	2pm - 4pm Sustainable Global Futures lectures	5pm MSA Collective Guest lecture
FRIDAY	9am - 1pm Self directed: Histories of Architecture	1pm - 2pm Lunch in Lowry	2pm - 5pm Self directed: Sustainable Global Futures	5pm MSA Exhibition opening event

■ Self-guided study/Extracurricular/Personal ■ Timetabled study

*This is an example timetable, your exact timetable may vary.



"One of the things that is so good about the course is the large variety of extracurricular activities. There are opportunities to attend lectures, workshops, software tutorials, debates, talks, society events, competitions, design talks and guest lectures. Last year, we were lucky enough to host Sir Norman Foster for an amazing lecture!"

JAMIE, BA ARCHITECTURE STUDENT

DAY IN THE LIFE

PAULA'S MANCHESTER

Paula, an Architecture student, shares her favourite spots around Manchester.

MANCHESTER CENTRAL LIBRARY:

If you need a good place for concentrating - this is the best place for it! The grand study hall with a dome ceiling impresses me every time I go there.

ROYAL EXCHANGE THEATRE:

Another impressive, classical building that has a theatre inside another theatre. You can easily catch a great play for cheap prices, and students get discounts too!

FLETCHER MOSS GARDENS:

Hands down, the most beautiful park in Manchester. I come here when the weather is nice, take long walks by the river or just have a picnic with friends. And, magically, there's always something blooming - even in winter - it's so beautiful!



BIG HANDS: Definitely my (and many others') favourite bar in Manchester! Music from record players and a roof garden with lots of fairy lights and plants. Also, you don't have to travel far to get here, as it's right next to the University campus.

FACILITIES

Our studios are based at Manchester Technology Centre on Oxford Road.

Whether you're creating a presentation model, experimenting with materials or devising a conceptual way to show your ideas, our facilities at Manchester School of Architecture will enable you to fulfil your ambitious creative visions.

A SELECTION OF OUR WIDE RANGE OF FACILITIES INCLUDES:

- Model-making workshops
- State-of-the-art computer clusters
- Nationally recognised libraries
- Specialist collections, software, materials, and equipment.

Explore our facilities:
uom.link/msa_facilities

MANCHESTER STUDENT SOCIETY OF ARCHITECTURE

The MSSA is a completely student led society at Manchester School of Architecture aiming to enhance the student experience of its 700+ members. You'll benefit from activities ranging from the creative - such as photography competitions, life drawing and debates - to those promoting wellbeing, including peer support and socials.

Find out more about MSSA:
uom.link/msa



YOUR FUTURE

CAREERS AND EMPLOYABILITY

Alongside their academic studies, Manchester School of Architecture students benefit from a selection of additional experiences and opportunities organised by the MSA Employability Team including networking events, CV workshops and employability sessions. Our MSA Collective team arrange guest lectures and events to compliment the course and there is also an active Manchester Society of Architects in the city who hold events and attend our graduation show preview where many students secure job interviews. This ensures students graduate with an impressive array of knowledge, skills and strong industry connections.

Our graduates are well-known for their confidence and creative flair, meaning top employers include:

- AHR
- BDP
- Foster + Partners
- Hawkins\Brown
- Sheppard Robson

If, during your degree you find your interests lie elsewhere, architecture offers you an excellent range of transferable skills, suitable for careers including interior design, urban planning, web design, teaching and research.



Hear from our graduates:
msa.ac.uk/profiles

BECOMING A QUALIFIED ARCHITECT

To register as an architect, you typically complete five years of study alongside a minimum of two years of industry experience, before sitting your final professional examination.

At the Manchester School of Architecture we offer the full suite of architectural courses from Part 1 to Part 3. Below shows how our courses fit into the standard path to becoming a registered architect.

BA (HONS) ARCHITECTURE

RIBA Part 1 – three years full-time

PAID PRACTICAL EXPERIENCE

Stage 1 – typically one year
Supported by your MSA advisor

MASTER OF ARCHITECTURE (MARCH)

RIBA Part 2 – 2 years full-time

PAID PRACTICAL EXPERIENCE

Stage 2 – typically one year
Supported by your MSA advisor

PGCERT ARCHITECTURE AND CONTEMPORARY PRACTICE

RIBA Part 3 – part-time

EMPLOYMENT



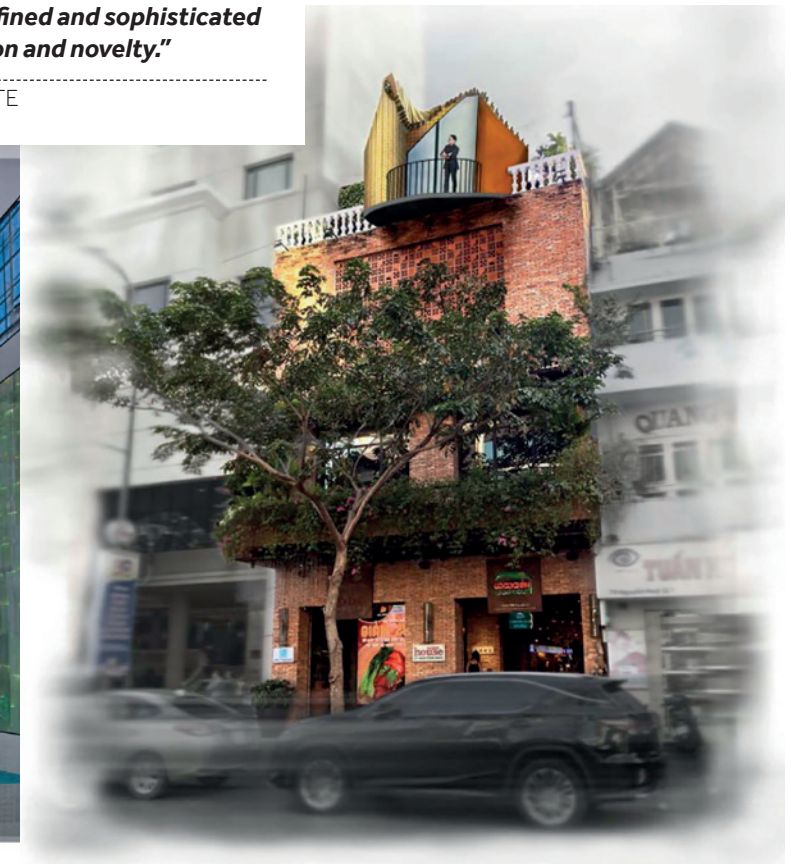
90%

go on to work
and / or study
within 15 months
after the course
(Discover Uni 2025)



"The philosophy of Manchester School of Architecture allows you to explore unique concepts, but still make them tangible and relatable to the real world. I think my practice has benefited immensely from this with my designs becoming much more refined and sophisticated but retaining a sense of innovation and novelty."

LOLA, BA ARCHITECTURE GRADUATE





Manchester Institute of Education

Become part of an institution with a proud legacy of teaching Education since 1890. Join one of the UK's top-ranked Education departments, where each specialised course is delivered by experts from the prestigious Manchester Institute of Education (MIE).

The Institute's research contributes to improvements in the quality of education for students, their families and communities in educational settings throughout the world.

COURSE LISTINGS

Education BSc	3 years
Education, Leadership and Culture BA	3 years
Educational Psychology BSc	3 years

RANKINGS

TOP
10

Top 10

Ranked 7th in the
UK for Education
(QS 2025)



FIND OUT MORE ABOUT A CAREER IN EDUCATION

Scan to discover more careers information or use this link:
uom.link/mie_careers

CAREERS

WHAT DO OUR EDUCATION GRADUATES DO?

- Child and adolescent counselling
- Educational officer training for local authorities
- Primary and early years education
- Roles in non-governmental organisations (NGOs) focused on community education
- Special needs teaching
- Teaching English as a second language
- Youth work

WHO EMPLOYS OUR EDUCATION GRADUATES?

- Consultancy
- Higher education
- Hospitality
- Local and central government
- Management
- Marketing
- Public relations
- Retail
- Sports management

"The Manchester Institute of Education is well-known for its high-quality teaching staff and distinguished researchers. The Ellen Wilkinson Building, which is the building for MIE, is named after a politician who served as Minister of Education and graduated from The University of Manchester. To study in the same School as Ellen Wilkinson is an extraordinary experience for me."

FEIRAN REN BSC
EDUCATION GRADUATE



DISCOVER MANCHESTER INSTITUTE OF EDUCATION

Scan to discover all Education courses or use this link:
uom.link/mie_courses



Education

COURSE DESIGN - BSC EDUCATION

BSc Education prepares you for a dynamic career in education, research, and policy. You'll develop a critical understanding of how people learn across all ages, explore global inequalities in education, and examine how these are influenced by government policies.

Choose one of three optional pathways to tailor your degree to your interests and career goals:

PRIMARY/EARLY YEARS EDUCATION

Explore global perspectives on teaching, literacy, and numeracy, and prepare for a future in early years education.

INTERNATIONAL EDUCATION

Understand education in a global context. Learn about international systems, policies, and the role of NGOs.

SPECIAL NEEDS IN EDUCATION (SNIE)

Explore psychology in education, focusing on special needs and disability. Gain insights into global inclusive practices and mental health.

INSPIRE THE NEXT GENERATION

We offer a range of Postgraduate Certificate in Education (PGCE) courses to help you take your first step towards becoming a fully qualified teacher. Our programme has been rated as 'Outstanding' across the board too (Ofsted Report 2018), giving you a highly valued qualification, recognised nationally and internationally.

Find out more about PGCE courses: uom.link/education_PGCE

COURSE DESIGN - BSC EDUCATION

YEAR ONE

In your first year, you will be introduced to the core three themes of this programme: sociology, psychology and critical policy analysis to help explain teaching and learning processes.

YEAR TWO

Focus on your area of interest by choosing one of three specialist pathways (Primary/ Early Years Education, International Education or

Special Educational Needs and Disabilities) or keep your options open and continue without choosing a specialism.

YEAR THREE

In your final year, you will continue to develop mechanisms of and solutions to global inequalities both

within and beyond education, and how such issues are affected by government policies on education through studying from a broad range of optional units. You'll apply this knowledge in your final year dissertation.



DISCOVER BSC EDUCATION

Scan to watch our introduction animation or use this link: uom.link/education_video



PLACEMENTS

We work closely with a number of partner schools and organisations to facilitate placements, ensuring our students are able to familiarise themselves with educational environments and systems while putting their knowledge into practice. You'll undertake work experience or research placements, supervised by academic support staff. While these placements typically sit within schools, students may find themselves working in adult education, Further Education, Higher Education or community-based learning organisations, both within the UK and overseas.



Education, Leadership and Culture

BA Education, Leadership and Culture champions educational leadership beyond formal settings and across social, cultural and generational boundaries. The degree allows you to gain expertise in three fast-emerging educational sectors:

- The cultural, creative and heritage sectors
- The digital education sector
- The urban and community education sector

Collaborating with arts, heritage and cultural institutions, NGOs, civic and community organisations, digital creators and innovators, you develop innovative learning solutions fit for the 21st century. Learning on BA ELC is enhanced by study trips, work placements, and collaborative projects with a diverse range of education providers in the city of Manchester and beyond.



DISCOVER BA EDUCATION, LEADERSHIP AND CULTURE

Scan to view our animated overview, or use this link:
uom.link/elc_video

EXPERIENCES



Opportunity to complete a professional placement.

COURSE DESIGN - BA EDUCATION, LEADERSHIP AND CULTURE

YEAR ONE

Gain a full understanding of educational theory and practice in both formal and non-formal settings, including schools, arts and heritage sites, and civic learning organisations. Enhance your creativity in producing learning resources for diverse audiences, using different media and digital tools. Delve into place-based and collaborative learning through study trips and problem-based fieldwork and assessment.

YEAR TWO

Develop your understanding and skills in educational leadership cultures and styles that make a real impact for different populations while promoting social responsibility

and justice. Enjoy your first placement and deepen your knowledge by taking optional course units that are tailored for your personal interests and professional aspirations.

YEAR THREE

Explore 'Culture' as key concept, resource, and asset in diverse educational environments. Enjoy a further placement opportunity and take advantage of optional course units and showcase your acquired skills and interests through a final Research Project.

REAL-WORLD EXPERIENCE

Deepen your understanding of culture and creativity as valuable resources for educational practice and change. Enjoy another placement opportunity to put your learning into practice. Take advantage of additional optional course units and showcase your acquired skills and knowledge by creating your Final Year Project – a quality educational product, resource or intervention which can find application in real-world contexts.



FIND OUT MORE

Scan to read about course details or use this link:
uom.link/elc_details

YOUR FUTURE

CAREERS AND EMPLOYABILITY

The BA ELC opens doors to a wide range of careers—both within and beyond traditional teaching. Here are just a few examples of where your journey could lead:

CULTURE, CREATIVITY AND HERITAGE

- Museum Education Specialist
- Arts Education Coordinator at theatres, galleries, and cultural centres
- Cultural Events Director organising international festivals and exchanges

DIGITAL EDUCATION AND INNOVATION

- EdTech Content Developer
- Virtual Learning Experience Designer crafting immersive environments
- Educational App Producer developing international learning applications



URBAN AND COMMUNITY LEADERSHIP

- Community Education Officer leading diverse urban initiatives
- Youth Program Director managing UNICEF-style educational programmes
- Social Impact Coordinator driving NGO educational projects
- Educational Tourism Manager



Educational Psychology

Explore the application of psychological theories and principles to the context of education with a degree in BSc Educational Psychology.

The course will allow you to explore core areas of psychology specifically in relation to education, including biological, cognitive, social, and developmental psychology. It will also encourage you to consider the importance of individual differences.

Learn from active researchers and practicing educational and counselling psychologists in education at the highly-regarded Manchester Institute of Education (MIE). Applied learning is a key focus within the MIE and you'll put your learning in to practice through placements in schools and other educational settings, preparing you for your future career.

ACCREDITATION



Accredited
by the British
Psychological
Society (BPS)

COURSE DESIGN - BSC EDUCATIONAL PSYCHOLOGY

YEAR ONE

You'll develop a solid understanding of the core areas of psychology, and how you can relate them to education. This includes exploring childhood development, the role of neurology in learning and your first placement opportunity in a school environment.

YEAR TWO

Alongside continuing to build research skills, studying risk and resilience and examining educational psychology in a professional context, you will customise your study with a number of bespoke optional units in education or wider allied disciplines (e.g sociology, criminology, or beyond).

YEAR THREE

Your final year will introduce you to concepts that enable you to make informed choices about the needs of children with different social, emotional and behavioural needs. You'll undertake a final placement in a partner school and complete a major project in your chosen specialism.



DISCOVER BSC EDUCATIONAL PSYCHOLOGY

Scan to see our course introduction video, or use this link:
uom.link/edpsyc_video

"As my course focuses on children and their psychological development, it was very beneficial to be in a classroom setting filled with children and try to understand the life of a child."

JUWAYRIAH BHANA, BSC EDUCATIONAL PSYCHOLOGY STUDENT

YOUR FUTURE

CAREERS AND EMPLOYABILITY

BSc Educational Psychology will prepare you for a career in a range of fields including:

- Child and adolescent counselling and educational psychology;
- Special needs teaching;
- Mental health assistance;
- School-based intervention training and delivery;
- Educational officer training (for local authorities).

You will be able to enhance your employability by undertaking placements throughout the course.

BECOMING A PSYCHOLOGIST

Our BPS accredited BSc Educational Psychology is your first step to a rewarding career as a Psychologist. If you choose to follow this career path, you'll need to gain some full-time work experience in the field after graduation before returning to university for your postgraduate studies in your chosen field. Progression to postgraduate teacher training is also an option, and The University of Manchester's Primary and Secondary PGCEs have been rated as outstanding by Ofsted.

Find out more about Educational Psychology by using this link:
uom.link/edpsyc_details



"I have a strong interest towards environmental issues, so I wanted to make a difference and drive attention to this area. The fact that all my lecturers are so passionate about what they teach has been one of my course highlights."

ZSOFI KUTASI
BSC ENVIRONMENTAL MANAGEMENT

Environmental Management

This degree focuses on the Earth's natural resources, the way in which human societies interact with them, and how they can be sustainably managed. You'll develop a solid understanding of both scientific principles and relevant policy frameworks that are essential to addressing global environmental challenges.

Often you will be taught in small classes, making for a truly world-class learning environment that encourages lively discussions and provides excellent academic support. What's more, you'll be joining an organisation that shares your passion for the environment – environmental sustainability forms a key part of the University's core goal of social responsibility.

ZERO CARBON



2038

Our university aims to be zero carbon by 2038.

COURSE LISTINGS

Environmental Management BSc

3 years

Environmental Management with Professional Placement BSc

4 years

As our Environmental Management, Planning and Real Estate undergraduate degrees share several common course units in the first year, you are normally permitted to transfer between any of that group of degrees at the end of your first year should you wish to do so (see page 38 for Planning courses).



FIND OUT MORE

Scan to watch our students talk about Environmental Management or use this link:
uom.link/env_mgmt_video

COURSE DESIGN

YEAR ONE

In Year 1, you will receive a broad introduction to the challenges facing the environment and their scientific underpinnings. Get to grips with contemporary topics such as pollution, sustainable cities, ecology, conservation and global environmental change. You'll be introduced to practical training in skills such as ecological surveys and conservation management.

YEAR TWO

In Year 2, you'll begin to focus on the practicalities of environmental management. You'll develop knowledge of the many tools available to environmental managers to shape more sustainable futures. This ranges from

learning about environmental policies through to completing a practical project where you develop solutions to a real-world environmental challenge. You will have an international fieldtrip while also having the chance to spend a semester abroad or to undertake industrial experience alongside your studies.

PROFESSIONAL PLACEMENT YEAR

If you choose to complete a full-year's paid professional placement, this will take place in your third year. You will return to your studies at the University for your fourth year.

YEAR THREE

Your third year focuses on embedding skills and experience that enhance your employability, including working directly with environmental management professionals to meet a client brief. This year also develops an advanced knowledge on specific themes, including environmental law, green infrastructure and conservation management. Excitingly, you'll also undertake your dissertation where you design and implement your own independent research project on an environmental topic of your choice.



DISCOVER ENVIRONMENTAL MANAGEMENT

Scan to discover all our relevant courses or use this link:
uom.link/env_mgmt_courses



STUDENT LIFE

EXAMPLE FIRST YEAR TIMETABLE

MONDAY	9am - 10am Morning run @ Platt Fields Park	10am - 1pm Work on group project in the library	1pm - 4pm Field Visit: Applied Environmental Science - kick sampling to compare the water quality of two rivers
TUESDAY	9am - 11am Coffee with friends in Students' Union	11am - 1pm Lecture: Applied Environmental Science	2pm - 4pm Lecture: Designing Sustainable Futures
WEDNESDAY	10am - 12noon Workshop: Designing Sustainable Futures	12noon - 1pm Lunch @ Benugo cafe	1pm - 3pm Volunteering @ Hulme Community Garden Centre
THURSDAY	9am - 10am Yoga society	1pm - 3pm Lecture: Intro to Ecology and Conservation	3pm - 5pm Seminar: Intro to Ecology and Conservation
FRIDAY	10am - 12noon Lecture: Environmental Processes & Change	12noon - 2pm Lunch and study in the Learning Commons	2pm - 3pm 1:1 meeting with my academic advisor

■ Self-guided study/Extracurricular/Personal ■ Timetabled study

*This is an example timetable, your exact timetable may vary.



"Being able to study at Manchester has allowed me to network with and learn from professionals in the field I hope to work in one day. As part of my placement with City of Trees, an environmental non-profit group that works across Greater Manchester, I was able to work across several exciting projects."

CHARLES LOUIS ANDERTON, BSC ENVIRONMENTAL MANAGEMENT GRADUATE



YOUR FUTURE

CAREERS AND EMPLOYABILITY

Manchester is home to the largest number of environmental consultancies in the UK outside London and many of our graduates choose to stay in the city after university.

Students wanting to work in the environmental sector benefit enormously from volunteering experience. To further advance the employability of Environmental Management students, they have their very own conservation volunteering group, the Tree Musketeers. The group is now so popular students attend their adventures from across the University, but it is first and foremost for Environmental Managers.

Read about some of the activities they take part in: uom.link/uom_tree_musketeers

Employers include: The National Trust, WaterAid, African Development Bank, RSK Group, AECOM, Avison Young, Environment Agency and the UK Government (Department for Energy Security and Net Zero).

Find out more about careers: uom.link/env_mgmt_careers

PROFESSIONAL PLACEMENTS

Environmental Management is a hands-on course and all of our students have the opportunity to put their skills into practice through professional placements.

SECOND YEAR PLACEMENT

Over the course of your second year, you have the option of undertaking a professional placement during one of your vacation periods or during your spare time.

PROFESSIONAL PLACEMENT YEAR

In Year 3, you have the option to take a year out of your studies to complete a paid work placement with an environmental organisation, to apply the conceptual, digital and communication skills you practice at university. You can apply direct to this pathway or switch during your first year.

INTERNATIONAL FIELD TRIPS

Fieldwork* - both local and international - is an integral part of the course. In Year 2, you'll explore the comparisons and contrasts between UK and overseas environmental management issues on the fieldtrip to a European location, which in recent years has been to Portugal.

STUDY ABROAD

Broaden your horizons and develop a global network of friends and professional contacts by studying overseas† for a semester, gaining a fresh perspective on Environmental Management. We have exchange partners in countries including the US, Canada, South East Asia and Australia. Your results from work completed at your partner university will be shared with us to feed into your overall grade for the year.

*Please see fieldwork disclaimers on the inside back cover

†Please see study abroad disclaimers on the inside back cover



"I was impressed by the flexibility Manchester offered Geography students. The University combines human and physical topics in very interesting ways - this made me curious to find out more."

ANDREI BADEA
BA GEOGRAPHY

Geography

Here at The University of Manchester, we've been teaching Geography for more than 125 years - after all, where better to study the subject than this rapidly changing metropolis, with its surrounding national parks and stretching coastlines?

Our flexible programme allows you to study both human and physical geography, and later you have the opportunity to specialise in BA, BSc or continue with both.

Apply your knowledge in real world settings and experience a range of environments through field work, a professional placement or a year abroad.

UK RANKINGS



Top 10

Ranked 7th in the
UK for Geography
(QS 2025)

COURSE LISTINGS

Geography BA	3 years
Geography BSc	3 years
Geography with International Study BA	4 years
Geography with International Study BSc	4 years
Geography with Professional Placement BA	4 years
Geography with Professional Placement BSc	4 years



LEARN MORE

Scan to watch a video about the Geography student experience, or use this link: uom.link/geography_video

COURSE DESIGN

YEAR ONE

This year will introduce you to the essential concepts and skills you'll be using throughout your studies. You'll take core units in both human geography and physical geography. In years one and two, optional course units will expand the range of your geographical knowledge, and also allow you to explore your interests outside of Geography. You'll develop your research skills as you explore the local and global significance of Manchester, taking part in fieldtrips* around the city and the surrounding area.

skills, applying many of them on an overseas field trip*. The majority of your remaining units are options chosen by you based on your interests. Whichever you choose, you will gain a firm grasp of how to gather and analyse geographical data.

PROFESSIONAL PLACEMENT/ INTERNATIONAL STUDY YEAR

If you choose a four-year programme, you'll spend your third year gaining work experience in the UK or overseas, or studying

anywhere from Europe, the US and Canada, to Australia or South East Asia.

FINAL YEAR

A diverse and balanced group of typically 10-15 specialist course units will be available to you in your final year, allowing you to tailor your studies to your interests. You'll complete the write up of your dissertation, a major independent and original piece of research, which you will have conceived and started planning in your second year.

YEAR TWO

You'll develop your geography research and professional



DISCOVER GEOGRAPHY

Scan to discover all Geography courses or use this link: uom.link/geography_courses



STUDENT LIFE

EXAMPLE FIRST YEAR TIMETABLE - GEOGRAPHY

MONDAY	10am - 11am Run in Platt Fields Park	12noon - 2pm Lecture: Introducing Human Geographies	3pm - 4pm PASS Mentor Session
TUESDAY	10am - 12noon Study and breakfast in Learning Commons	12noon - 2pm Tutorial	2pm - 4pm Prep for group presentation in the library
WEDNESDAY	10am - 12noon Lecture: Environmental Processes and Change	12noon - 2pm Lunch and study session @ Benugo cafe	1pm - 4pm Sports and Societies
THURSDAY	10am - 12noon Lecture: Creating a Sustainable World	12noon - 1pm Lunch @ University Green	1pm - 3pm Lecture: Ice Age Britain
FRIDAY	10am - 12noon Lecture: Key Concepts in Geography	1pm - 3pm Writing up an essay in the library	3pm - 4pm Practical in the labs

■ Self-guided study/Extracurricular/Personal ■ Timetabled study

*This is an example timetable, your exact timetable may vary.

DAY IN THE LIFE

ROSIE'S MANCHESTER

Rosie, a Geography student, shares her favourite spots around the city.



MACKIE MAYOR:

Mackie Mayor is on the very edge of the Northern Quarter. From wood fired pizzas to freshly caught and served fish and chips, you'll find something delicious to enjoy! I also think it's a great place to take friends or family that come to visit you in Manchester; you won't be disappointed with the food, and it's a perfect example of the flare, friendliness and fun of Manchester.

MANCHESTER

AQUATICS CENTRE:

Manchester Aquatics Centre hosted the 2002 Commonwealth Games, so it's a really great sports facility with a full-length 50m pool. It's located just a 5 minute walk from the Students' Union, so I find it a great environment to go and have a swim after a day at university - it really helps me to de-stress.

THE JOHN RYLANDS LIBRARY:

This library is like stepping into Hogwarts! I can't even describe how amazing it is to walk into a library that was constructed over 120 years ago, and find all the hidden nooks and cosy study spaces. Alongside the gorgeous architecture and perfect study environment, there's also really interesting exhibitions held there.



"In Second Year, I went on a field trip to Crete. My highlight was the project I conducted called 'The Geomorphology of the Loutro Coast' where a fellow student and I led a team on an observation and in-depth analysis of the coastal processes forming the coastline."

JAMES WALLEY/BA GEOGRAPHY WITH INTERNATIONAL STUDY



DISCOVER FIELDWORK

Scan to discover fieldwork or use this link:
uom.link/geography_fieldwork



FACILITIES

We're one of Europe's best equipped universities for studying geography, with state-of-the-art laboratories, including microscopy, virtual reality, Geographical Information Science (GIS), x-ray and spectroscopy labs accessible to our students. Learn professional skills such as coding and programming, or discover our industry-standard software for image processing, Geographic Information Systems and cartographic representation.

Find out more: uom.link/geography_facilities



FIELDWORK

Fieldwork is an integral part of studying Geography at Manchester. You'll have opportunities to get out into the field right from the start of your course. In Year 1, you'll head out into the city and its environments, examining the social, economic, political and environmental changes affecting the region. In Year 2, your overseas fieldwork module will allow you to examine contemporary issues and environments in destinations such as Morocco, Crete, Amsterdam, Spain and the Czech Republic.



"Studying abroad in Australia was a really exciting opportunity. I was able to travel, experience a different teaching style, meet lots of new people and grow in self-confidence."

KATE GOODCHILD
BA GEOGRAPHY WITH
INTERNATIONAL STUDY



PROFESSIONAL PLACEMENT

Kick start your career by gaining a year of work experience in a geography-related professional sector before completing the fourth and final year of your course. You'll be supported in finding a placement by our Placements Coordinator, peer mentors, and Careers Service, and we'll keep in regular contact with you throughout the year. Students have recently undertaken placements in environmental consultancies, local government, banking and finance, planning and transport services. You can apply directly for BA/BSc Geography with Professional Placement or apply to transfer after first year.

INTERNATIONAL STUDY

Expand your horizons beyond Manchester by choosing to study abroad for a full year on our BA/BSc Geography with International Study courses. You'll complete your third year abroad at one of our partner universities and return to Manchester for your fourth and final year. Study abroad locations include a range of European countries, Australia, New Zealand, Canada, Hong Kong, Singapore, Mexico or the USA. You can apply directly for BA/BSc Geography with International Study or apply to transfer after first year.



STUDY ABROAD

Scan to discover our current partnerships or use this link: uom.link/exchange_partners



MEET OUR GRADUATES

Scan to discover more about our graduates or use this link: uom.link/geography_alumni

YOUR FUTURE

CAREERS AND EMPLOYABILITY

Studying Geography at Manchester opens up a whole world of career opportunities, in areas as diverse as environmental consultancy, urban planning and government policy. We also help you to connect with employers through our networking events and professional placements.

YOUR SKILLS

You'll leave university with a highly-valued set of transferable skills, including communication, data analysis, research and problem-solving, alongside specialist geographical skills you develop during your course, such as working with spatial data, undertaking interviews and conducting field analysis.

GRADUATE DESTINATIONS

Our graduates have successful careers in a wide range of areas, including:

- research
- local government
- planning
- enterprise
- education
- project management
- consulting

Many of our students also continue to postgraduate study, including master's courses, teacher-training and PhDs in Geography and closely related disciplines.

GRADUATE SALARIES



£30,000

Salary earnings 5 years after graduation (Discover Uni) 2022



"The University of Manchester is a very well-regarded international institution. Being able to be in other parts of the world, and for that to be instantly recognised, is something that really sets you up for success."

CHARLES DAVID, GEOGRAPHY GRADUATE WORKING IN A US VENTURE CAPITAL FIRM SPECIALISING IN HUMAN AND PLANETARY HEALTH



STUDENT BLOGS

Scan to discover our graduate blogs or use this link: uom.link/geography_blog



"We have many opportunities to attend various academic events and lectures, allowing us to interact and share experiences with respected experts and scholars worldwide. This academic exchange and collaboration culture fuels our curiosity, drives our research ambitions, and contributes to our overall academic development and growth."

YI ZHENG,
BSC GLOBAL DEVELOPMENT

Global Development

The Global Development Institute addresses global inequalities through world-class, interdisciplinary research, and teaching, in order to promote a socially-just world in which all people, including future generations, can enjoy a decent life. Made up of over 70 academics and around 700 students from around 40 countries, the Global Development Institute is one of the largest and most diverse providers of development studies in Europe.

BSc Global Development focuses on the political, economic and environmental challenges faced by the Global South, including Asia and the Pacific, Africa and Latin America. However, the challenges facing peoples, businesses and governments in the Global South cannot be understood without exploring connections with the Global North. Today's challenges - climate change, poverty and inequality, health, political instability and violence - cut across global boundaries and require a global perspective. You will learn how to analyse these issues using different approaches, as the course emphasises insights from a range of interconnected disciplines, particularly geography, politics and economics.

GLOBAL RANKINGS



2nd

Join one of the world's leading institutions for sustainable development (THE University Impact Ranking 2024)

COURSE DESIGN

YEAR ONE

Learn about the world's most pressing global development challenges, including climate change, poverty and inequality, and gender equality and social justice. You will learn how insights from different disciplines can be combined to help us understand global development challenges, and gain quantitative and qualitative skills so that you can understand development trends and research.

YEAR TWO

In the second year, you will begin specialising based on the global development challenges and regions that interest you most. There will also be the opportunity to take courses from the University's Humanitarian and Conflict Research Institute, learning more about how communities and organisations respond to natural disasters and violent conflicts.

YEAR THREE

You will spend your third year continuing to specialise in issues and regions that interest you by taking course units offered by the Global Development Institute or approved units offered by other departments. There is a focus on employability in Year 3, with in-class opportunities to network and understand how development practitioners, policymakers, social movements and communities are responding to global development challenges. You will also write a dissertation on a topic in global development, supervised by an individual lecturer who will meet with you one-on-one over the course of the final semester.

COURSE LISTINGS

Global Development BSc	3 Years
Global Development with International Study	4 Years



DISCOVER GLOBAL DEVELOPMENT

Scan to view our courses or use this link:
uom.link/gdi_courses



STUDENT LIFE

EXAMPLE FIRST YEAR TIMETABLE - BSC GLOBAL DEVELOPMENT

MONDAY	10am-12noon Lecture on Geopolitical Rifts and Shifts and the future of Development	12noon-1pm Lunch @ University Place	1pm-3pm Reading research on the politics of foreign aid allocation	5pm-6pm Guest lecture by a chief economist at the Department of Foreign Affairs
TUESDAY	10am-11am Tutor drop-in session	11am-1pm Self-directed: Preparing for skills workshop tomorrow	1pm-2pm Lunch @ Hatch	2pm-5pm Preparing group presentation on the politics of French foreign aid
WEDNESDAY	9am-11am Reading research on the geopolitics of climate change	11am-12noon Skills Workshop: Interpreting statistics on vaccination rates	1pm-3pm Sports and Societies	3pm-5pm Relax.....
THURSDAY	9am-10am Morning run @ Whitworth Park	10am-12noon Lecture on women's empowerment and child health	1pm-4pm Academic writing workshop	4pm-5pm Group study session in the library
FRIDAY	8am-9am Gym session @ Sugden Sports Centre	10am-1pm Seminar: Student presentations on the politics of aid allocation in different countries	1pm-3pm Lunch @ University Green	3pm-4pm Reading UNICEF report on vaccination against malaria

■ Self-guided study/Extracurricular/Personal ■ Timetabled study

*This is an example timetable, your exact timetable and sessions may vary.

DAY IN THE LIFE

ERZHENA'S MANCHESTER

Erzhena, a student at the Global Development Institute, shares with us her favourite spots around the city.

NEW ISLINGTON MARINA:

A great city spot on the canals with a concentration of nice cafes, living barges and a little park turning into a sunbathing area as soon as the sky gets clear from the

clouds. The famous Pollen bakery, one of the best brunch places in the city, is located here, on the edge of the canal. It is an ideal place for a relaxing weekend walk.

ANCOATS COFFEE:

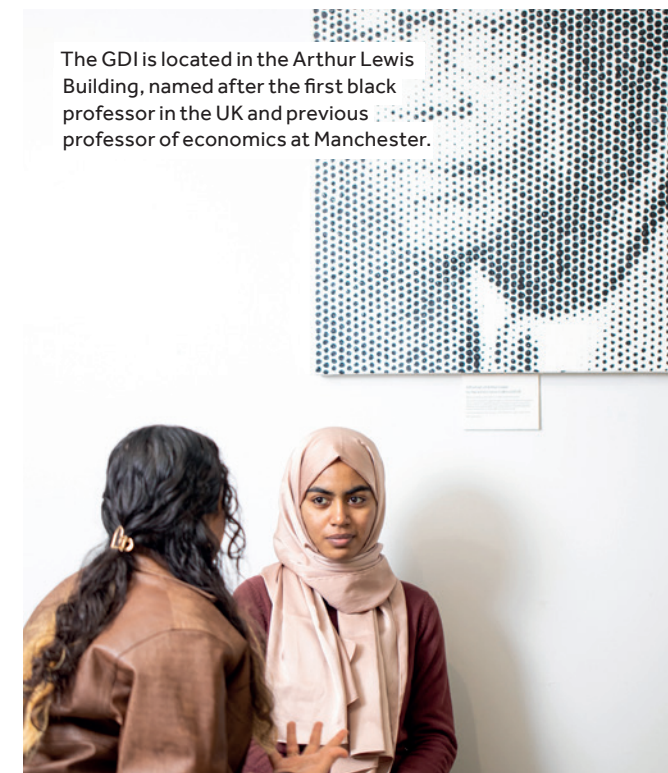
This coffee shop is located in the neighbourhood of the same name in the iconic redbrick building of the old cotton mill. The mill, a heritage of Mancunian industrial past, was recently renovated but keeps the remarkable



historic atmosphere. Visit the place to drink good coffee while observing the sky through the glass ceiling of the futuristic atrium in the former inner courtyard.

Read more on our blog
uom.link/gdi_blog

HISTORY



The GDI is located in the Arthur Lewis Building, named after the first black professor in the UK and previous professor of economics at Manchester.

From being a small training unit on the edge of the University, the Global Development Institute now leads one of its major research beacons on global inequalities. With a culmination of impressive history of development studies at Manchester which has spanned over 60 years, we have educated more than 10,000 students from across the world who now help drive forward sustainable development and social justice for all.

GLOBAL RANKINGS

TOP 10

Top 10

Top ten for development studies in Europe (QS 2025)



Scan to discover our longstanding history or use this link: uom.link/gdi_video

GRADUATE SALARIES



£29,500

Average earnings of up to £29,500 in related fields 5 years after graduation (Discover Uni 2022)

YOUR FUTURE

CAREERS AND EMPLOYABILITY

YOUR FUTURE

With over 10,000 alumni across the globe, the Global Development Institute has helped launch many careers over the years. Our course units have been designed to ensure you graduate with the research and professional skills you need to pursue your chosen career. What's more, the Global Development Institute offers over 20 master's courses, allowing you to delve deeper into your chosen field.

YOUR SKILLS

Learning in our state-of-the-art classrooms and computer laboratories, the course will equip you with excellent subject knowledge, while also developing your transferrable skills, such as communication, data analysis, research and problem-solving. The Global Development Institute is highly diverse with both students and academics from around the world, enhancing your intercultural skills.

GRADUATE DESTINATIONS

You will be well equipped for a wide range of positions in the public and private sectors, working on developmental issues. Recent graduates have gone on to work in the UK and overseas in various organisations, such as the Foreign, Commonwealth and Development Office, World Agroforestry Centre, British High Commission, and the United Nations Development Programme.



"Manchester has a multi-disciplinary approach to teaching planning. Most of the assignments require students from the wider department to work together and find a balanced solution to problems, which is very much like the real world."

MARIAM KUNNIPARAMPIL
MPRE PLANNING AND
REAL ESTATE

Planning and Real Estate

Develop your passion for improving where and how people live with a career in designing and understanding cities, planning for more liveable places, shaping the skylines of cities, and examining how we use urban and rural spaces. Effective planning is crucial in an age when governments and societies are striving to deliver sustainable development. This issue plays a crucial theme throughout your studies as you practice managing all aspects of our built and natural environments.

Manchester is a great place to study planning and real estate, it is a major UK city with a rich industrial legacy, undergoing rapid urban change, which provides an ideal base for exploring urban development pressures and how these shape economic, social, and environmental futures.

COURSE LISTINGS

MPlan Master of Planning	4 years
Planning with Professional Placement MPlan	5 years
Planning and Real Estate BSc	3 years
Planning and Real Estate with Professional Placement BSc	4 years
MPRE Master of Planning and Real Estate	4 years
Planning and Real Estate with Professional Placement MPRE	5 years

As our Planning, Real Estate and Environmental Management undergraduate degrees share many common course units in the first year, you are normally permitted to transfer between any of that group of degrees at the end of your first year should you wish to do so (see page 24 for Environmental Management courses).

ACCREDITED COURSES



x2

Accredited
by both RICS
and RTPI *

COURSE DESIGN

YEAR ONE

You'll be introduced to designing sustainable futures in the context of planning and real estate. You'll begin to develop your practical skills, including getting to grips with Geographic Information System (GIS) and data handling and analytics.

YEAR TWO

Develop your understanding of the plan-making and development process, learning about the different systems and policies that affect town and country planning, and real estate and property development.

Begin to put your plan-making skills into practice – as well as developing your practical skills in software such as Adobe Illustrator and Adobe Photoshop – through projects and group work with a strong focus on fieldwork, analysis and sustainable development. Choose to spend a semester abroad or to undertake a work placement.

PROFESSIONAL PLACEMENT YEAR

If you choose to complete a year's paid work placement, this will take place in your third year. For BSc students, you'll then return to the University for your fourth year (following Year 3 course units). For MPlan/MPRE students, you'll return to university to complete your fourth and fifth years of study (following Year 3 and Year 4 course units).

YEAR THREE

Examine the theories, laws and ethics relating to planning and real estate, and property development, while working on a topic to specialise in for your dissertation. Your employability skills will be strengthened as you learn more about working in professional practice. You'll cover useful topics such as

working with and managing clients, accreditation and interview advice to ensure you're ready to take the next steps in your career.

YEAR FOUR (MPLAN/MPRE)

Fourth year studies are Master's-level and provide advanced training in planning (MPlan) and planning, real estate and property development (MPRE).

You'll build valuable industry links and partake in further overseas fieldwork – in recent years to Berlin, Germany or to Seattle, USA – to gain an international perspective on planning. You will also have the opportunity to undertake a work placement.



HEAR FROM OUR STUDENTS

Scan to watch video or use link:
uom.link/planning_video



DISCOVER PLANNING AND REAL ESTATE

Scan to discover all Planning courses or use this link:
uom.link/planning_courses



STUDENT LIFE

EXAMPLE FIRST YEAR TIMETABLE

MONDAY	10am - 12noon Lecture: Intro to Planning & Development	12noon - 3pm Lunch and study group at the library	3pm - 4pm Seminar: Intro to Planning & Development
TUESDAY	10am - 11am 1:1 meeting with my academic advisor	1pm - 2pm Lunch @ Students' Union	2pm - 4pm Lecture: Designing Sustainable Futures
WEDNESDAY	10am - 12noon Workshop: Designing Sustainable Futures	12noon - 1pm Lunch @ Kro Bar	1pm - 4pm Football training at Armitage Centre
THURSDAY	10am - 12noon Lecture: Intro to Real Estate	1pm - 2pm Lunch @ University Green	3pm - 4pm PASS session with second years
FRIDAY	10am - 1pm Prep for group presentation at the library	2pm - 5pm Work as student ambassador – campus tours	7pm Watch a gig @ YES

■ Self-guided study/Extracurricular/Personal ■ Timetabled study

*This is an example timetable, your exact timetable may vary.



STUDY ABROAD

Broaden your horizons and develop a global network of friends and professional contacts by studying overseas† for a semester, gaining a fresh perspective on planning and real estate. We have exchange partners in countries including the US, Canada, South East Asia and Australia. Your results from work completed at your partner university will be shared with us to feed into your overall grade for the year.



INTERNATIONAL FIELD TRIPS

Fieldwork† – both local and international – is an integral part of our courses. You'll have the opportunity to get out in the field in every year of your studies. In Year 2, you'll explore the comparisons and contrasts between UK and overseas planning, real estate and environmental management issues on the field trip to a European location, which in recent years has been to Portugal. MPRE and MPlan students will also take a second overseas field trip in their fourth year.



EMPLOYMENT



95%

go on to work and / or study within 15 months after the course (Discover Uni 2022)

YOUR FUTURE

CAREERS AND EMPLOYABILITY

Our courses are accredited by the Royal Institution of Chartered Surveyors (RICS) and the Royal Town Planning Institute (RTPI)*, which combined with a wealth of professional experience you'll pick up on placements, means you'll graduate with the skills employers value.

Planning and Real Estate graduates have gone on to work in a wide range of areas, including:

- planning
- surveying
- urban design
- construction
- environmental management
- local government
- research.

Employers include many UK and international property and real estate organisations such as Barratt Developments, Capita, AECOM, Colliers International and JLL, as well as many local and national government departments.

Learn more about careers: uom.link/planning_careers

PROFESSIONAL PLACEMENTS

Planning and Real Estate are hands-on courses and all of our students have the opportunity to put their skills into practice through professional placements.

SECOND YEAR PLACEMENT

Over the course of your second year, you have the option of undertaking a professional placement during one of your vacation periods or spare time. This will allow you to develop specialist skills relevant to your chosen career path, while building your network of planning and real estate contacts.

PROFESSIONAL PLACEMENT YEAR

In Year 3, you have the option to take a year out of your studies to complete a paid work placement with a planning or real estate organisation, to apply the conceptual, digital and communication skills you practice at university. You can apply direct to this pathway or or switch within your first year.

OPTIONAL FOURTH YEAR PLACEMENT (MPLAN/MPRE ONLY)

As an optional unit in your fourth year, this work experience takes place over a minimum of 15 days at a professional level in urban planning and property development.

Your Future

Our courses offer great scope for you to shape your studies in line with your career aspirations.

During your time at the University, you can learn more about different careers through guest lectures, discussions with your academic advisor, summer internships and work placements.

You'll also have the opportunity to meet employers at our events.



CAREERS SERVICE

Our Careers Service will prepare you for the competitive job market and help you find part-time jobs, volunteering opportunities and work placements. This service helps make Manchester one of the most targeted universities by graduate employers (High Fliers Report 2024).

Visit our [Careers Service website](https://uom.link/careers_service) to find out more: uom.link/careers_service

MANCHESTER LEADERSHIP PROGRAMME

This University-wide second year course unit offers a unique combination of academic units and volunteering. You will learn the importance of leadership in promoting social, economic and environmental sustainability.

Visit our website to find out more about the Manchester Leadership Programme: uom.link/mlp

MANCHESTER GOLD

Career mentoring is a really useful way of meeting people working in your chosen field.

Students can apply to be matched with an employer mentor from a wide range of sectors, depending on their own ambitions.

THE UNIVERSITY OF MANCHESTER GLOBAL ALUMNI COMMUNITY

With more than 500,000 alumni worldwide, you'll never be far from another graduate of The University of Manchester. There are established alumni groups in countries around the world to help you stay connected to each other and to the University – great for networking within your country and professional industry.

UNIVERSITY COLLEGE

The University College of Interdisciplinary Learning offers optional units outside of your subject area. Units will introduce you to topics and ways of thinking, tackling the key questions facing society in the 21st century – for example, the digital revolution,

globalisation and mental health. Our units equip you with invaluable knowledge and skills which will complement your studies and help make you more employable.

STUDENT SOCIETIES

There are a number of subject-level societies you can join through the Students' Union, as well as societies that can support your future plans, including:

- Geography (MUGS)
- Manchester Student Society of Architecture (MSSA)
- LGBTQ+ Society
- Disabled Students' Society
- Amnesty International
- Tree Musketeers
- Homeless Healthcare
- Incredible Edible - Sustainability Project

Find out more on the Students' Union website: uom.link/student_union

STELLIFY

DO MORE BE MORE

There's a reason our graduates are some of the most targeted by the UK's top graduate recruiters (High Fliers Research 2024). The Stellify Award is a unique University of Manchester award supporting your personal development and graduate outcomes alongside your studies.



WATCH MORE

Scan to discover our Stellify guide or use this link: uom.link/stellify_guide

We encourage you to broaden your horizons, understand the issues that matter in contemporary society and step up to make a difference to local and global communities. You'll do more, dream more, try more and be more.



MY STELLIFY STORY

Scan to discover how Aya sparked a passion for International Development or use this link: uom.link/stellify_aya

Find out more about Stellify: uom.link/stellify_26



Funding and scholarships

UK STUDENT FINANCE

UK GOVERNMENT TUITION FEE LOANS

Full-time UK students can apply for a tuition fee loan from the government, regardless of household income, that covers the full cost of the tuition fee.

Visit the Government website for more information: uom.link/student_finance

UK GOVERNMENT MAINTENANCE LOANS

As well as the tuition fee loan, full-time English domiciled students can apply for a maintenance loan from the UK government to help with expenses such as accommodation, food and bills.

For students residing in Wales, Scotland, and Northern Ireland, please visit our website to see more information: uom.link/uk_fees_funding

BURSARIES AND SCHOLARSHIPS

As a socially responsible university, we're fully committed to attracting and supporting the very best students. We're one of the leading Russell Group universities for welcoming talented students to higher education from British low income households, and we're proud to offer a generous package of financial support.

MANCHESTER BURSARY

The Manchester Bursary is available to UK students registered on an eligible undergraduate degree course at Manchester and who have had a full financial assessment carried out by Student Finance England. The Manchester Bursary is available to eligible students, for the duration of their course, subject to a financial reassessment each year. In 2024/25, eligible students were awarded either £1,300 or £2,600 per year depending on their residual household income.

Find out more about the criteria for receiving this financial support on our University Support page: uom.link/scholarships_bursaries

UNDERGRADUATE ACCESS SCHOLARSHIPS

The University's Undergraduate Access Scholarships are generously funded by our alumni community and donors. These scholarships are in addition to any other bursaries you may receive from the University and are awarded as follows:

All students who have successfully completed the Manchester Access Programme and started an undergraduate course at the University will receive a £1,300 award in their first year. Students from households where the income is below £25,000 per year will receive the award for each year of their study.

- Students under the age of 25 who have been in public care for a minimum of three months since the age of 11 will receive £1,300 a year throughout the duration of their undergraduate course.
- Students under the age of 25 who have been estranged from their family for at least six months and have

been studying without the support of a family network will receive £1,300 a year throughout the duration of their undergraduate course.

INTERNATIONAL SCHOLARSHIPS

International students looking for scholarships or other financial assistance towards covering fees and living costs should start thinking about this as early as possible. Many funding agencies and scholarships have strict deadlines and adequate funding for the full cost of your first year must be in place to successfully complete your visa application process.

Visit our website for the most up to date information on bursaries, scholarships and student finance: uom.link/fees_funding

In some instances, we offer subject-specific awards and partial-fee scholarships based on academic merit. Check the course listings on our website for details.

There is usually a range of financial support available to study courses in the School of Environment, Education and Development. For more information, please visit our website: uom.link/seed



FIND OUT MORE ABOUT STUDYING HERE

ADMISSIONS

Applying to university involves many important decisions – we're here to support you and make the process as simple and smooth as possible.

You can apply to all of our courses via UCAS.com.

Find out more on our website: uom.link/applying

INTERNATIONAL STUDENTS

A range of services is available for international students, including airport collection, orientation and specialist student advisors.

For more information, visit our website: uom.link/international_26

EU STUDENTS

EU, other EEA and Swiss nationals are not eligible for home fees or Student Finance England support. Students joining us from these countries will also need to apply for a visa under the new Student Route.

TUITION FEES

The undergraduate tuition fee and loan will remain at £9,535 per year for 2026 entry. Please check our course profiles for the most up-to-date information.

Use the tuition fee search tool to find out the fees for your course: uom.link/fees_support

PROSPECTUS

Ready to make your mark?

Explore our 2025/2026 online prospectus: uom.link/ug_prospectus



FIND OUT MORE ABOUT STUDYING HERE

ACCOMMODATION

Offer of accommodation is guaranteed for all new first year students. For international students, this promise covers the full duration of your course.

Some conditions do apply. For more information, visit our Accommodation website: uom.link/accommodation-26

MAPS

Explore your future home and take a closer look at our campus.

View our maps online: uom.link/maps

DISABILITY SUPPORT

If you need our support, we're here for you. The University's disability advisory and support service offers a range of services—please don't hesitate to get in touch to discuss your needs.

For more information, visit our Disability Advisory and Support Services website: uom.link/dass

SPORT

Discover more than 40 sports clubs, a huge variety of fitness classes plus sport volunteering.

Visit our website for more information: uom.link/sport_26

PRE-SESSIONAL ENGLISH

We offer several pre-session courses designed to improve both general and academic English skills, helping international students prepare for their degree studies.

For more information, visit the University Centre for Academic English website: link.uom/ucae

Student support

We have a range of specialist support services at the University to help you look after your general wellbeing and to keep you on track academically.

STUDENT INDUCTION

An induction programme for all new students takes place during welcome week to help you settle in. This includes:

- The opportunity to meet fellow students studying on your course and across the university
- Network with your programme director and student support staff
- Discover societies that you want to join and attend various social events

To find out more visit our Welcome website: uom.link/welcome

ACADEMIC ADVISORS

You meet your academic advisor regularly as part of your studies. Your academic advisor is there to support you throughout your studies on matters of an academic nature.

STUDENT SUPPORT AND ADVICE TEAM

If you'd prefer to talk to somebody outside the School, our student support and student money advisors based in The Atrium in University Place offer confidential appointments and drop-in sessions throughout the year.

Find out more on our Student Support website: uom.link/student_support

STUDENT MENTORING SCHEME

We operate a peer mentoring scheme, where you can ask questions and get academic help from students who have been in the same position as you.

COUNSELLING SERVICE

We have trained University counsellors on-campus, and a 24/7 counselling service which all students have access to throughout their degree.

STUDENTS' UNION

Our Students' Union has an advice centre to assist you with academic issues and a peer support centre whose services include Nightline, a confidential listening and information service run for students by students.

To find out more visit the Students' Union website: uom.link/student_union





DISCLAIMER

This brochure was produced in April 2025 for the 2026 intake. It has therefore been produced in advance of course starting dates. For this reason, course information, including course content, may be amended prior to your applying for a place on a course of study. There are a number of reasons why changes to course information and/or published term dates may need to be made prior to your applying for a place on a course. These may include, but are not limited to: the need to make reasonable changes to the content and teaching offered in relation to any course for operational and/or academic reasons; the withdrawal of courses due to insufficient numbers; a course not receiving the required accreditation; and/or interruption or loss of key services due to circumstances beyond our control, including fire, flood or other operational issues. Prospective students are therefore reminded that they are responsible for ensuring, prior to applying to study at The University of Manchester, that they review up-to date information by searching for the relevant course using the QR code below:



GET IN TOUCH

Undergraduate
Admissions Office
School of Environment,
Education and Development
The University of Manchester
Oxford Road
Manchester
M13 9PL

For up to date phone numbers
and email addresses, including
admissions contacts,
please visit our website:



SCHOOL OF ENVIRONMENT, EDUCATION AND DEVELOPMENT			TYPICAL ENTRY REQUIREMENTS			SUBJECT SPECIFIC
COURSE	UCAS CODE	COURSE LENGTH (YEARS)	A-LEVEL	CONTEXTUAL OFFER	IB	A-LEVEL
ARCHITECTURE						
Architecture [BA]	K100	3	AAA	ABB	36 points 6,6,6 at HL	Yes
Architecture with Foundation Year [BA]	K101	4	BBB	None	32 points overall with 5,5,5 at HL	No
EDUCATION						
Education [BSc]	X300	3	ABB	BBC	34 points 6,5,5 at HL	No
Education, Leadership and Culture [BA]	X305	3	ABB	BBC	34 points 6,5,5 at HL	No
Educational Psychology [BSc]	C812	3	AAB	BBB	35 points 6,6,5 at HL	Yes
ENVIRONMENTAL MANAGEMENT						
Environmental Management [BSc]	F852	3	ABB	BBC	34 points 6,5,5 at HL	No
Environmental Management with Professional Placement [BSc]	F853	4				No
GEOGRAPHY						
Geography [BA]	L700	3	AAB	BBB	35 points 6,6,5 at HL	No
Geography [BSc]	F802	3				No
Geography with International Study [BA]	LF78	4	AAA	ABB	36 points 6,6,6 at HL	No
Geography with International Study [BSc]	FL87	4				No
Geography with Professional Placement [BA]	L701	4	AAB	BBB	35 points 6,6,5 at HL	No
Geography with Professional Placement [BSc]	F803	4				No
GLOBAL DEVELOPMENT INSTITUTE						
BSc Global Development	L900	3	AAB	BBB	35 points 6,6,5 at HL	No
BSc Global Development with International Study	L906	3	AAA	ABB	36 points 6, 6, 6 at HL	No
PLANNING						
Master of Planning with Real Estate [MPlan]	1G23	4	ABB	BBC	34 points 6,5,5 at HL	No
Planning [MPlan]	K401	4				No
Planning and Real Estate [BSc]	K430	3				No
Planning and Real Estate with Professional Placement [BSc]	K431	4				No
Planning and Real Estate with Professional Placement [MPlan]	1G24	5				No
Planning with Professional Placement [MPlan]	K403	5				No



Scan for more detailed information on our entry requirements or use this link:
<https://www.seed.manchester.ac.uk/study/undergraduate/courses/2026/>