

HELLO TOMORROW

Faculty of Science and Engineering

POSTGRADUATE RESEARCH

What's next on your journey in Postgraduate Research?

Offer Holder Webinar
Wednesday, 4 June 2025
1pm - 2pm (BST)

TODAY'S PANEL



Avtarnika Sharma
PGR Marketing and Recruitment
Coordinator (Host)



Sandra Kershaw
PGR Admissions and
Recruitment Manager



Ajay Barker
Student Immigration Advisor



Myrna Rollins
Accommodation Office
Administrator



Rahul Subbaraman
Postgraduate Researcher
Earth and Environmental
Sciences



Modinat Tijani
Postgraduate Researcher
Chemistry

AGENDA

- Brief Admissions Update
- ATAS, Right to Study Check & Student Visa Applications
- Accommodation Process
- What's Next?
- Meet our PhD researchers Q&A Panel

ADMISSIONS

Conditional Offers

Submit evidence of meeting your academic and English language conditions as soon as possible to ensure you don't miss any important communications.

International applicants

Use the exact information in your offer letter to apply for ATAS. Submit your ATAS certificate as soon as possible for verification.

CAS

Cannot be processed until you have accepted an unconditional offer and completed Right to Study and have provided your ATAS certificate.

Joining instructions: Sent over the summer (July/August).

Registration: Opens 1st September.

Welcome Week: Starts 22nd September.

INTERNATIONAL STUDENT SUPPORT

ATAS



Apply as soon as possible
as applications are taking
at least 30 days or longer
– ensure information
matches offer letter

Right to Study Check



Upload scan of your passport
through MyManchester so
your CAS can be issued.
Check draft CAS is correct in
MyManchester.

STUDENT VISA APPLICATIONS



Standard applications can take 3 weeks to be processed so apply as soon as you receive your CAS number



Can pay extra for priority services through Visa Application Centre



Ensure you have held the correct level of funds for your tuition fees and living expenses in your bank account for 28 days if you are self-funded



Obtain TB certificate from approved test centre if required



VISIT OUR WEBSITE



Immigration and Visas

Academic Technology Approval Scheme (ATAS) Read more >	Visas and Applications Read more >	Immigration Health Surcharge Read more >
Right to Study Read more >	Electronic Travel Authorisation (ETA) Read more >	Your eVisa Read more >
Bringing Your Family (Dependants) Read more >	Your Student Visa Responsibilities Read more >	Registering Your Attendance (Student Visa Check-in) Read more >

<https://uom.link/pgrvisa>



ACCOMMODATION



As soon as you have an offer to study at The University of Manchester, you can apply for accommodation using our online application form.

Register for an account using your University ID number (found on your offer letter) and a valid email address.

Follow the steps and select your five preferences of halls.

Submit your application before 31 August (31 July for exchange or visiting students) of the year you intend to start your course.

Use your login to revisit and check your application status.

If you wish to seek for private sector accommodation, use MSH.

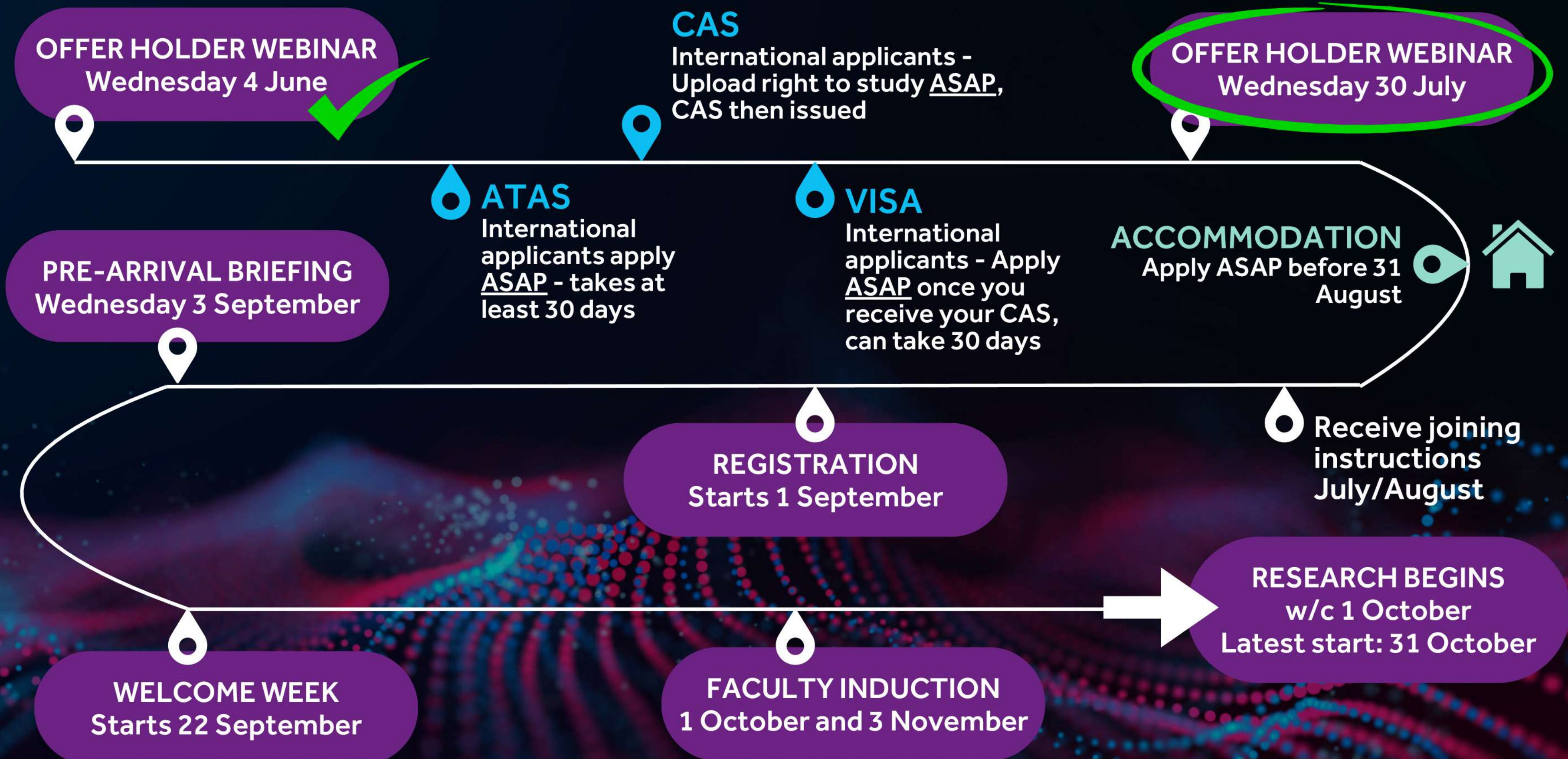


Manchester
Student Homes
University Approved
Accommodation



ONLINE
APPLICATION
FORM

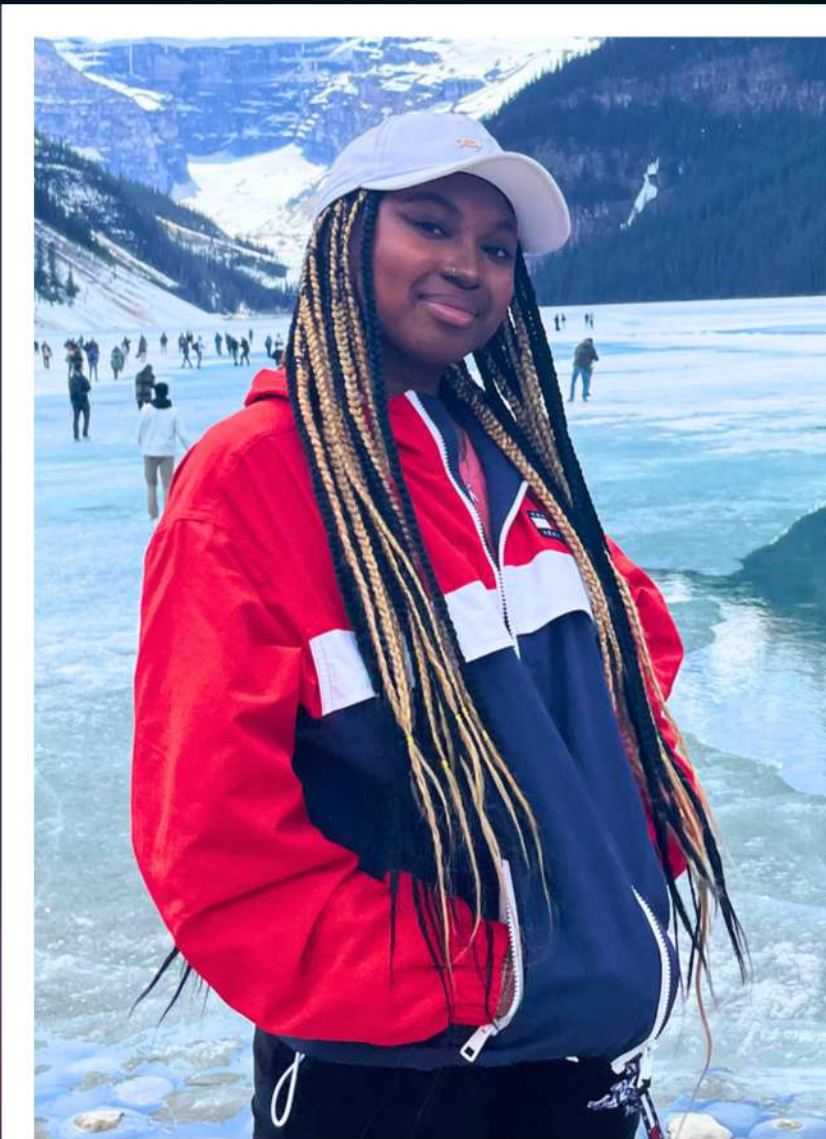
WHAT'S NEXT



MEET OUR POSTGRADUATE RESEARCHERS



Rahul Subbaraman
Postgraduate Researcher
Earth and Environmental Sciences



Modinat Tijani
Postgraduate Researcher
Chemistry



MEET OUR POSTGRADUATE RESEARCHERS

Q&A

**Drop any questions you've got for
Ambassadors in the Q&A box**



NEXT STEPS

Submit your evidence

Submit the evidence that you meet academic and English Language conditions once received

International applicants

Upload scan of your passport through MyManchester for your CAS

Apply for ATAS and Visa as soon as possible

Self-funded: Ensure funds are in bank for 28 days

Plan your accommodation

Apply for accommodation as soon as possible before 31 August

Register using university ID if applying for university accommodation

Attend our next webinar

Scan QR code below and register yourself



GOT A QUESTION?

ADMISSIONS

fse.doctoralacademy.admissions@manchester.ac.uk



INTERNATIONAL STUDENT SUPPORT

visa@manchester.ac.uk



ACCOMMODATION

www.accommodation.manchester.ac.uk



THANK YOU