

Change in SHAPE subjects' provision in the UK (2011/12 – 2022/23)

[Presentation created by the Market and Student Insight Team]

Analysis and considerations

This summary report has been created using the British Academy's SHAPE Observatory interactive tool to analyse the provision of SHAPE subjects in UK higher education institutions.

Key considerations:

1. Time Frame: The data covers the academic years from 2011/12 to 2022/23

2. Data Representation: The tool uses HESA data to show provision for first-year first degree UK-domiciled students aged 20 and under. The tool uses Full-Person Equivalent (FPE) rather than headcount to represent student engagement in courses. Data includes joint honours courses, with the equivalent FPE divided between relevant subjects.

3. The analysis covers two dimensions:

- **Higher education providers:** The maps show how the demand of SHAPE subjects has changed over time, highlighting providers recording low/no change in student FPE, providers recording an increase in student FPE, and providers recording a decrease.
- **Regional spread of provision:** The maps show how the regional distribution of SHAPE subject provision has changed over time, highlighting areas with multiple providers, single providers, and no provision within a 60km commutable distance.

MANCHESTER
1824

The University of Manchester

Politics

Moderate increase in the total demand of first-year degree UK-domiciled students aged 20 or under for 'Politics' (+24% student FPE) - against small increase in number of providers

Change in demand of first-year degree UK-domiciled students aged 20 or under	2011/12	2022/23	Change in FPE (#)	Change in FPE (%)
Subject: Politics	6,135	7,630	+1,495	+24%

➤ **Total demand:** There has been a moderate increase in the total demand for 'Politics' with a 24% increase student FPE from 6,135 in 2011/12 to 7,630 in 2022/23.

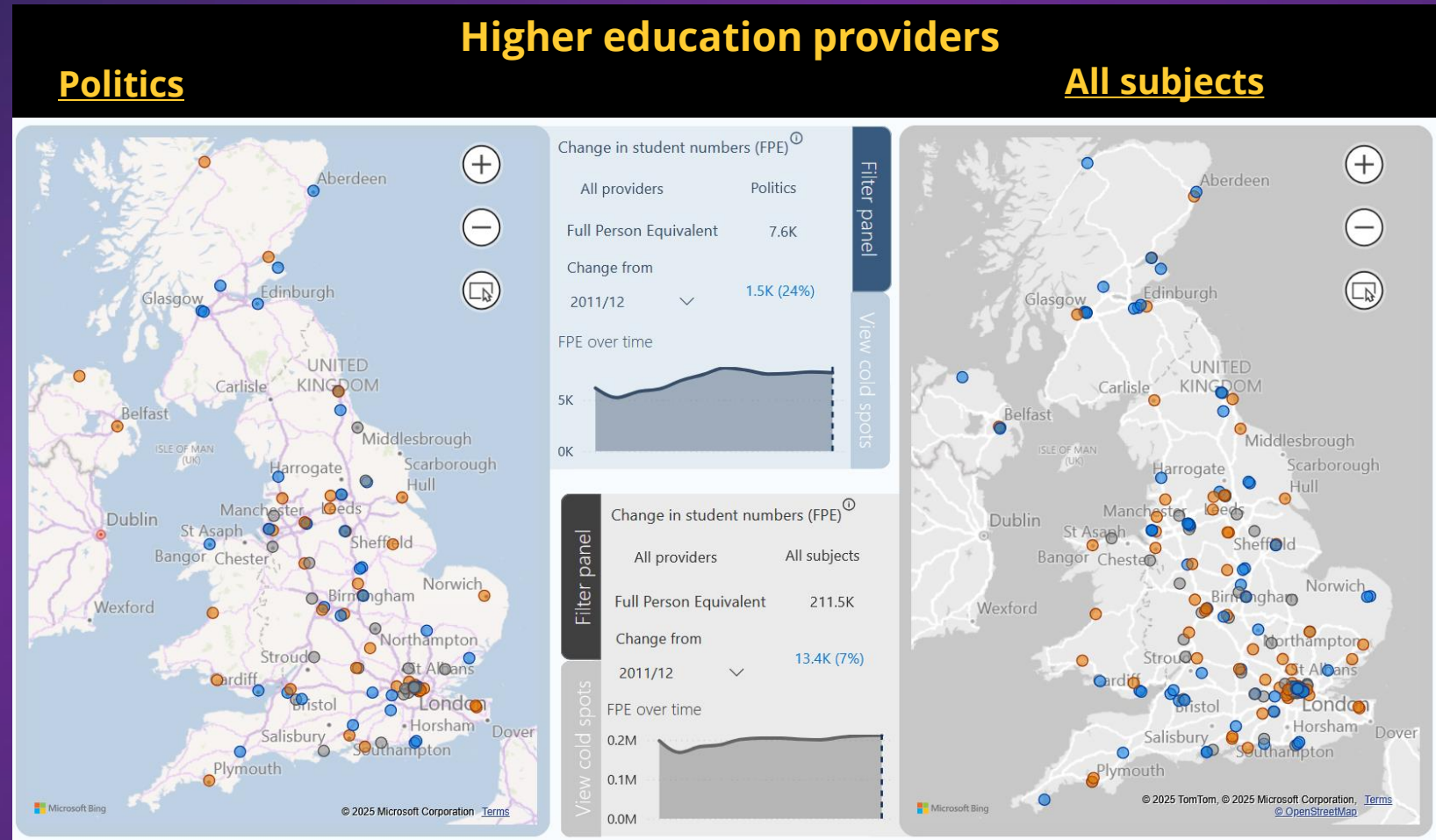
➤ **Increase in provision:** Politics has recorded a slight increase in provision with a total of 101 providers in 2022/23, a 16% increase in provision from 2011/12. Alongside the moderate growth in demand, 'Politics' as a subject area is arguably more stable in terms of growth relative to other subject areas in the humanities.

Change in number of providers offering courses in subject	2011/12	2022/23	Change in providers (#)	Change in providers (%)
Subject: Politics	87	101	+14	+16%

Increased demand for 'Politics' has been recorded across HE providers, alongside the overall increase in student FPE for all subjects

These maps show change in demand of first-year degree UK-domiciled students aged 20 and under by provider for 'Politics' vs. all.

- More HE providers recorded an increase or no change in student FPE (blue and grey) for 'Politics' alongside an overall increase (blue) for all subjects.
- Most of the providers that have recorded an increase in FPE for 'Politics' are Russell Group providers (although not exclusively, the same can generally be seen for higher tariff non RG HEIs, e.g. Sussex, Surrey). These include Warwick (+162%), Cardiff (+350%), Liverpool (+94%), Glasgow (+235%), Cambridge (+132%) and Bristol (+132%).
- UoM recorded an increase of 80 FPE to a total for 245 FPE in 2022/23 (a 48% increase since 2011/12)-a significant but less marked increase than for some other RG HEIs.

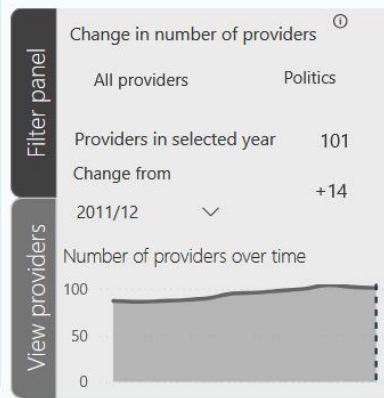
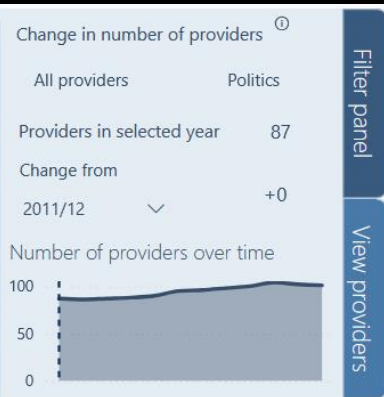
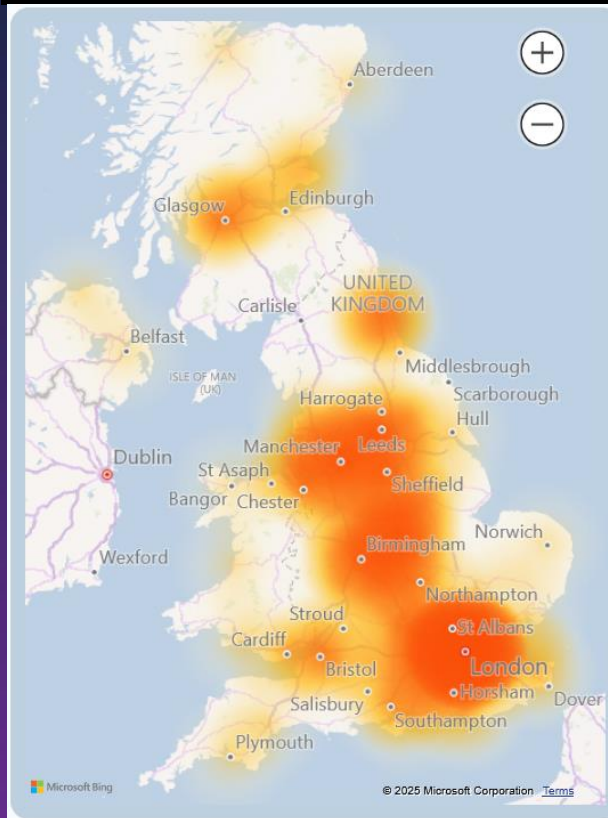


Key: Low/no change in student FPE (grey), Increase in student FPE (blue), Decrease in student FPE (orange)

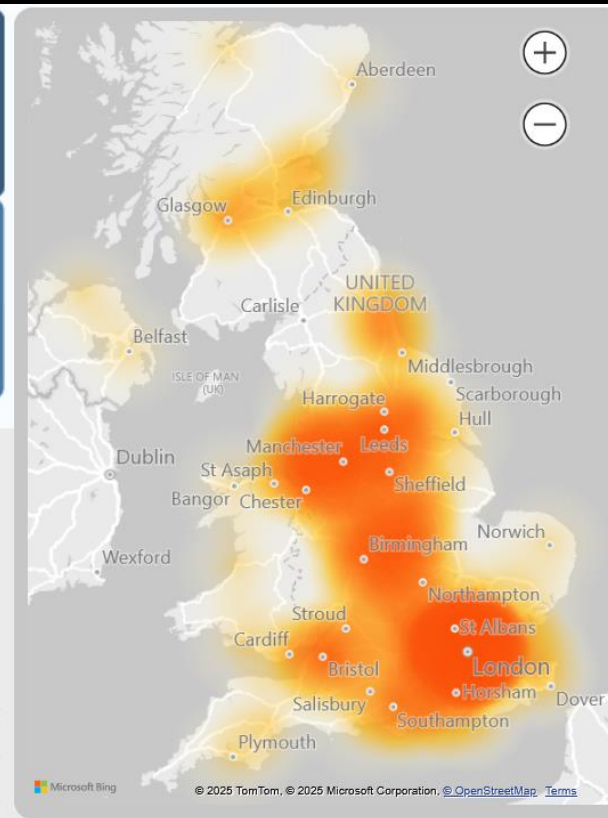
The regional spread of provision for Politics has remained consistent, with widespread provision, especially in larger cities and urban conurbations

Regional spread of provision: Politics

2011/12



2022/23



These maps show how the regional distribution of 'Politics' subject provision has changed over time for first-year degree UK-domiciled students aged 20 and under.

- There has been a slight increase in the number of providers offering 'Politics' related courses, with 101 providers in 2022/23 (an increase of 14 from 2011/12).
- **Hot spots:** London/SE, the North West, Yorkshire/North/NE and the Midlands are major hot spots for Politics provision including Russell Group and non-Russell Group providers.
- **Cold spots:** There is less access to provision in Central Wales, South West and Cumbria, highlighting a disparity for students living in those areas compared to the other UK regions and especially larger cities.

Key: multiple providers (orange), single providers (yellow), and no provision (white) within a 60km commutable distance

THANK YOU

MARKET AND STUDENT INSIGHT TEAM

For any questions, please contact: Alexandra Martin Hernandez alexandra.martinhernandez@manchester.ac.uk