

Change in SHAPE subjects' provision in the UK (2011/12 – 2022/23)

[Presentation created by the **Market and Student Insight Team**]

Analysis and considerations

This summary report has been created using the British Academy's SHAPE Observatory interactive tool to analyse the provision of SHAPE subjects in UK higher education institutions.

Key considerations:

1. Time Frame: The data covers the academic years from 2011/12 to 2022/23

2. Data Representation: The tool uses HESA data to show provision for first-year first degree UK-domiciled students aged 20 and under. The tool uses Full-Person Equivalent (FPE) rather than headcount to represent student engagement in courses. Data includes joint honours courses, with the equivalent FPE divided between relevant subjects.

3. The analysis covers two dimensions:

- **Higher education providers:** The maps show how the demand of SHAPE subjects has changed over time, highlighting providers recording low/no change in student FPE, providers recording an increase in student FPE, and providers recording a decrease.
- **Regional spread of provision:** The maps show how the regional distribution of SHAPE subject provision has changed over time, highlighting areas with multiple providers, single providers, and no provision within a 60km commutable distance.

Philosophy

Slight increase in the total demand of first-year degree UK-domiciled students aged 20 or under for 'Philosophy' (+3% student FPE) - against small increase in number of providers

Change in demand of first-year degree UK-domiciled students aged 20 or under	2011/12	2022/23	Change in FPE (#)	Change in FPE (%)
Subject: Philosophy	2,630	2,715	+85	+3%

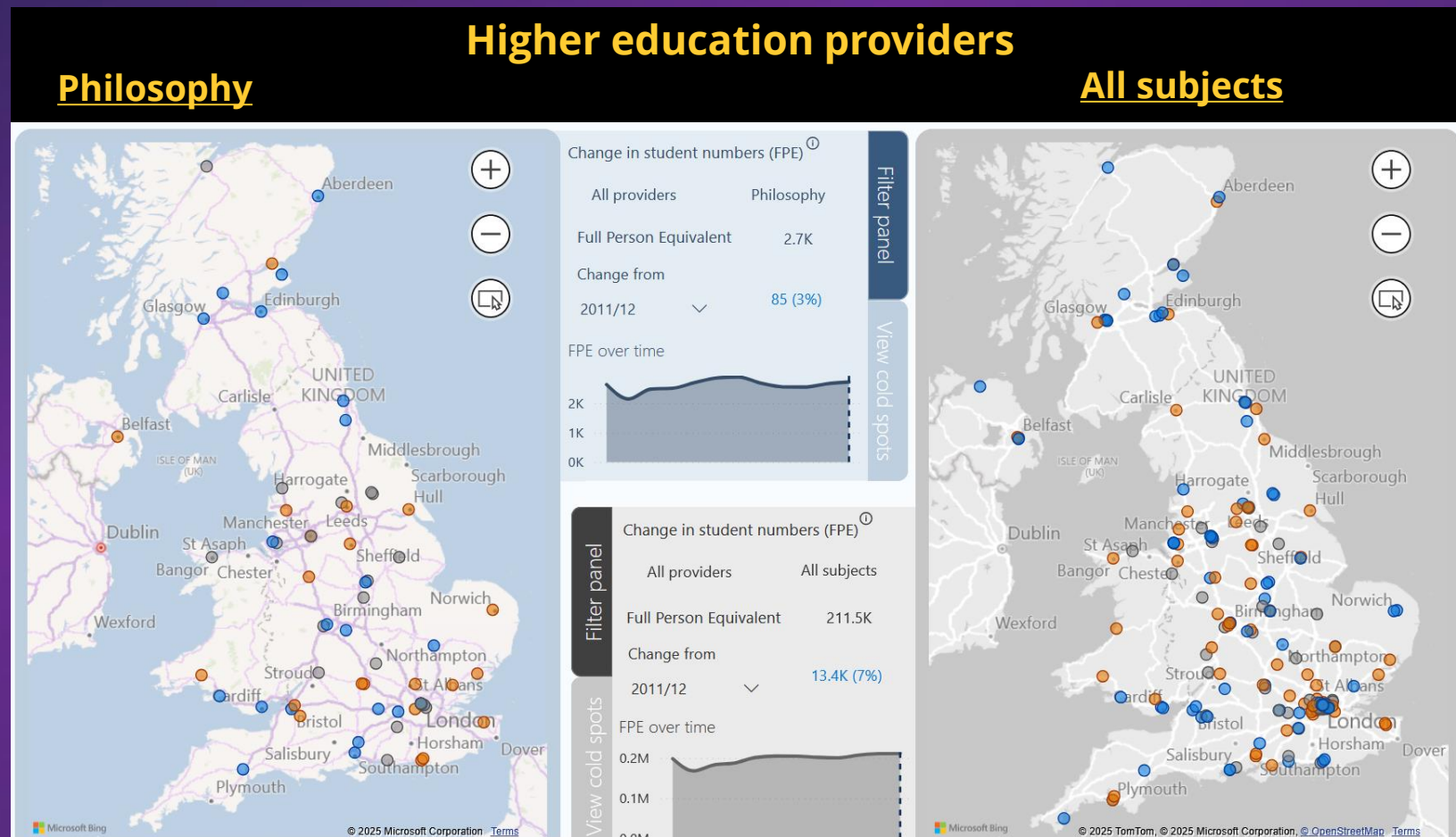
- **Total demand:** There has been a slight increase in the total demand for 'Philosophy' with a 3% increase in student FPE from 2,630 in 2011/12 to 2,715 in 2022/23.
- **Increase in provision:** Philosophy has recorded a small increase in provision with a total of 65 providers in 2022/23, a 16% increase in provision from 2011/12.

Change in number of providers offering courses in subject	2011/12	2022/23	Change in providers (#)	Change in providers (%)
Subject: Philosophy	56	65	+9	+16%

A smaller increase in demand for 'Philosophy' has been recorded across some HE providers-mainly RG/higher tariff HEIs

These maps show change in demand of first-year degree UK-domiciled students aged 20 and under by provider for 'Philosophy' vs. all.

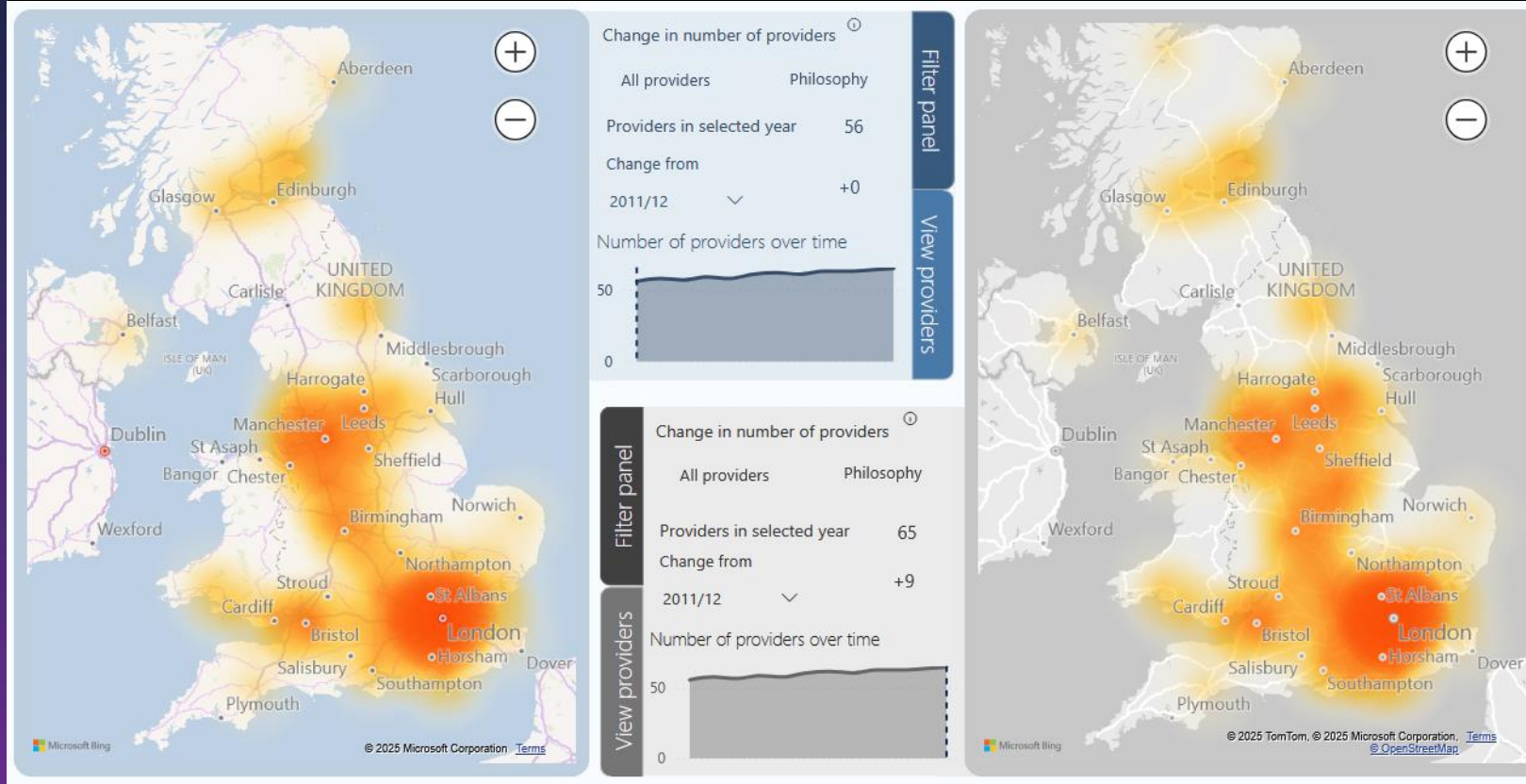
- Many RG providers (although not exclusively) recorded an increase in student FPE from 2011/12-2022/23
- The RG providers that recorded the largest increases in FPE include Bristol (106%), Cardiff (+98%), Edinburgh (+64%) Durham (+98%) and Newcastle (+200%), Warwick (+101%).
- UoM recorded a 2% increase in FPE between 2011/12 and 2022/23 at 95 FPE.
- HEIs recording decreases in FPE were predominantly non-RG (although not exclusively, with Leeds and Sheffield recording decreases of -21% and -10% respectively).



Key: Low/no change in student FPE (grey), Increase in student FPE (blue), Decrease in student FPE (orange)

The regional spread of provision for Philosophy has generally remained consistent, with provision generally centred in larger cities and London/SE

Regional spread of provision: Philosophy 2011/12 2022/23



Key: multiple providers (orange), single providers (yellow), and no provision (white) within a 60km commutable distance

These maps show how the regional distribution of 'Philosophy' subject provision has changed over time for first-year degree UK-domiciled students aged 20 and under.

- There has been a slight increase in the number of providers offering 'Philosophy' courses, with 65 providers in 2022/23 (an increase of 9 from 2011/12).
- **Hot spots:** London, the North West and the Midlands are hot spots for Philosophy provision including Russell Group and non-Russell Group providers. Growth is most evident in the Midlands.
- **Cold spots:** There is less access to provision in Central Wales, South West and the North East/Cumbria. However, this is not always because providers have closed provision, rather than it never existed in the first place.

THANK YOU

MARKET AND STUDENT INSIGHT TEAM

For any questions, please contact: Alexandra Martin Hernandez alexandra.martinhernandez@manchester.ac.uk