

Change in SHAPE subjects' provision in the UK (2011/12 – 2022/23)

[Presentation created by the **Market and Student Insight Team**]

Analysis and considerations

This summary report has been created using the British Academy's SHAPE Observatory interactive tool to analyse the provision of SHAPE subjects in UK higher education institutions.

Key considerations:

1. Time Frame: The data covers the academic years from 2011/12 to 2022/23

2. Data Representation: The tool uses HESA data to show provision for first-year first degree UK-domiciled students aged 20 and under. The tool uses Full-Person Equivalent (FPE) rather than headcount to represent student engagement in courses. Data includes joint honours courses, with the equivalent FPE divided between relevant subjects.

3. The analysis covers two dimensions:

- **Higher education providers:** The maps show how the demand of SHAPE subjects has changed over time, highlighting providers recording low/no change in student FPE, providers recording an increase in student FPE, and providers recording a decrease.
- **Regional spread of provision:** The maps show how the regional distribution of SHAPE subject provision has changed over time, highlighting areas with multiple providers, single providers, and no provision within a 60km commutable distance.

Linguistics

Slight decrease in the total demand of first-year degree UK-domiciled students aged 20 or under for 'Linguistics' (-2% student FPE) - against slight increase in number of providers

| Change in demand of first-year degree UK-domiciled students aged 20 or under | 2011/12 | 2022/23 | Change in FPE (#) | Change in FPE (%) |
|--|---------|---------|-------------------|-------------------|
| Subject group: Linguistics | 690 | 680 | -10 | -2% |

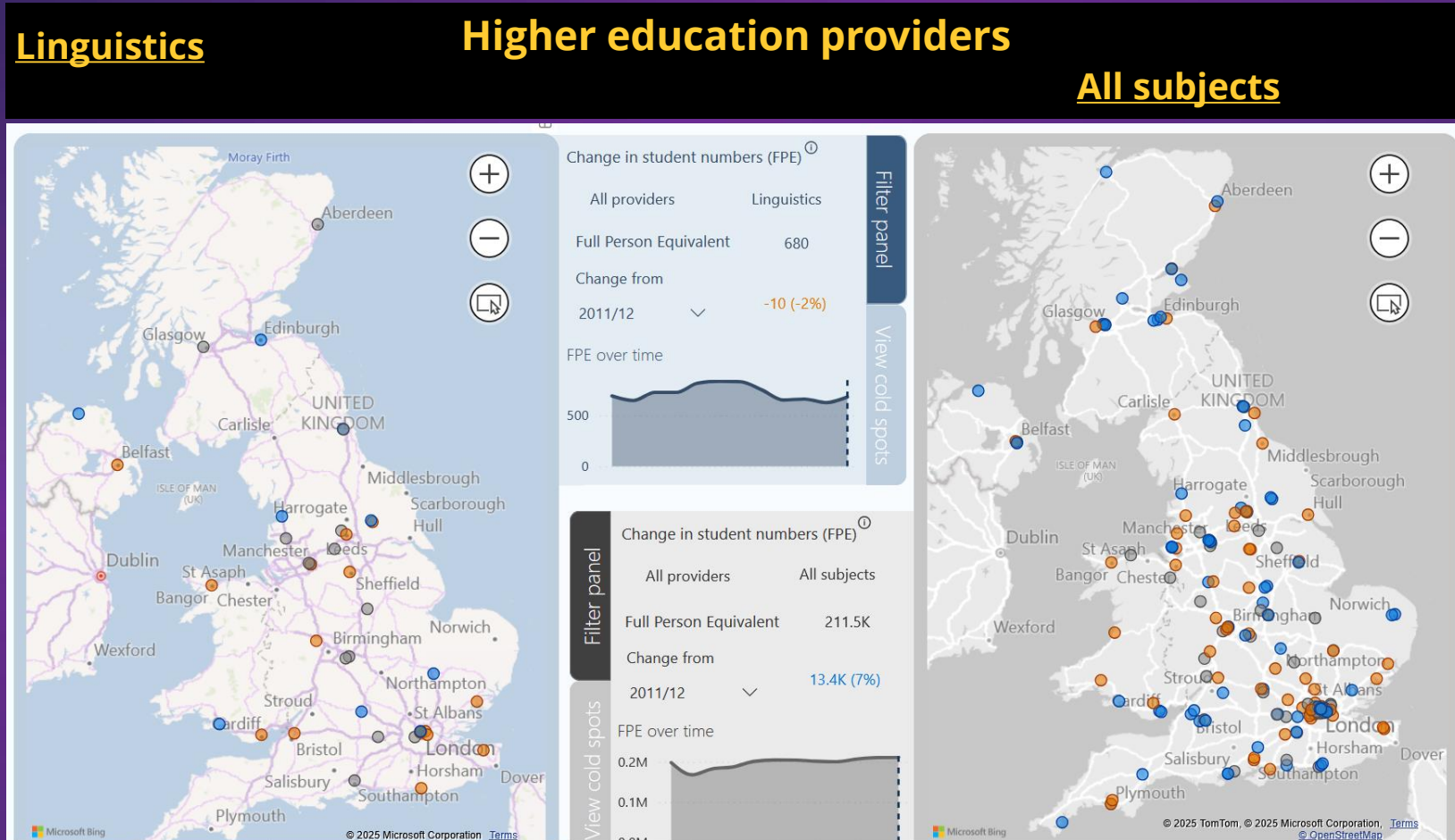
| Change in number of providers offering courses in subject | 2011/12 | 2022/23 | Change in providers (#) | Change in providers (%) |
|---|---------|---------|-------------------------|-------------------------|
| Subject group: Linguistics | 33 | 41 | +8 | +24.2% |

- **Total demand:** There has been a decrease in the total demand for 'Linguistics' with a reduction of 2% student FPE from 690 in 2011/12 to 680 in 2022/23.
- **Increase in provision:** Linguistics has recorded a slight increase in provision. Despite this increase, the recorded decline in demand is reflective of the current challenging environment consisting of increased competition in related subject areas alongside a broader shift to non-humanities career-oriented subjects.

Decrease in demand for 'Linguistics' has been recorded across most HE providers, those recording an increase tend to be higher tariff RG

These maps show change in demand of first-year degree UK-domiciled students aged 20 and under by provider for 'Linguistics' vs. all.

- Most HE providers recorded a decrease in student FPE (orange) for 'Linguistics' despite an overall increase (blue) for all subjects.
- Most of the providers that have recorded an increase in FPE for 'Linguistics' are high tariff Russell Group providers. The providers with the largest increases are The University of Edinburgh (+15), The University of Oxford (+10), University College London (+5) and The University of Cambridge (+5). Non-RG HEIs seeing an increase include York St. John University (+25), Lancaster University (+20) and Swansea University (+5),
- UoM recorded a decrease of 30 FPE from 75 FPE (a decrease of 42% since 2011/12).

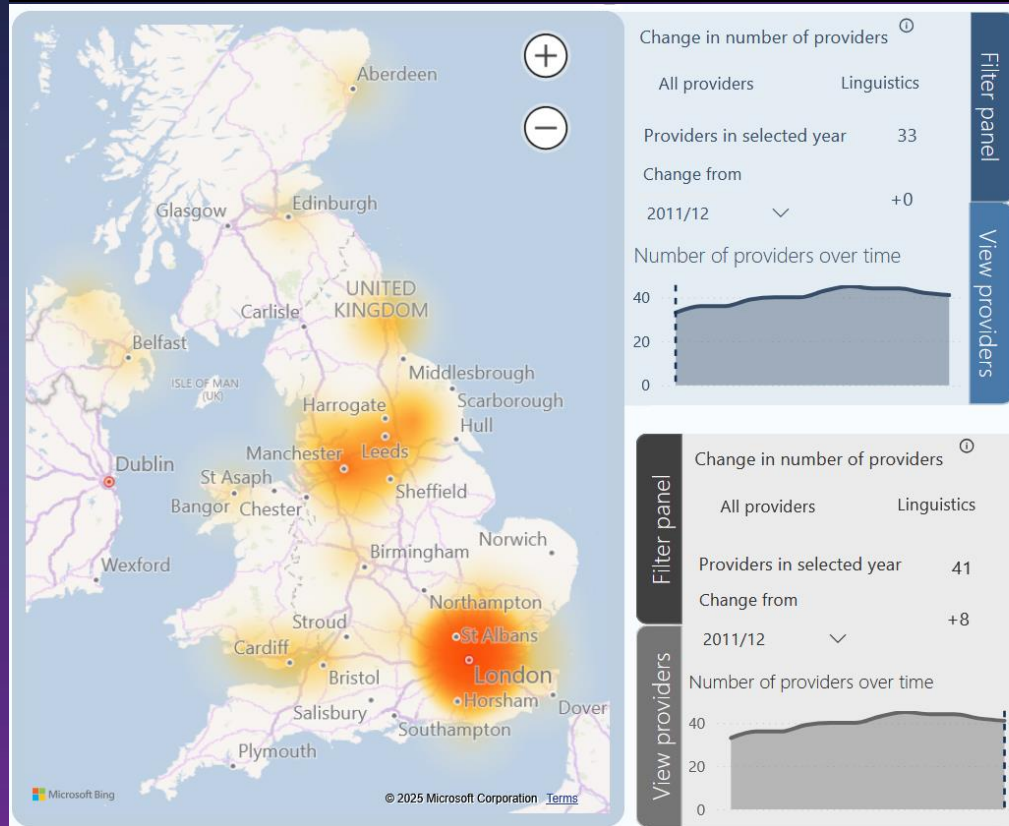


Key: Low/no change in student FPE (grey), Increase in student FPE (blue), Decrease in student FPE (orange)

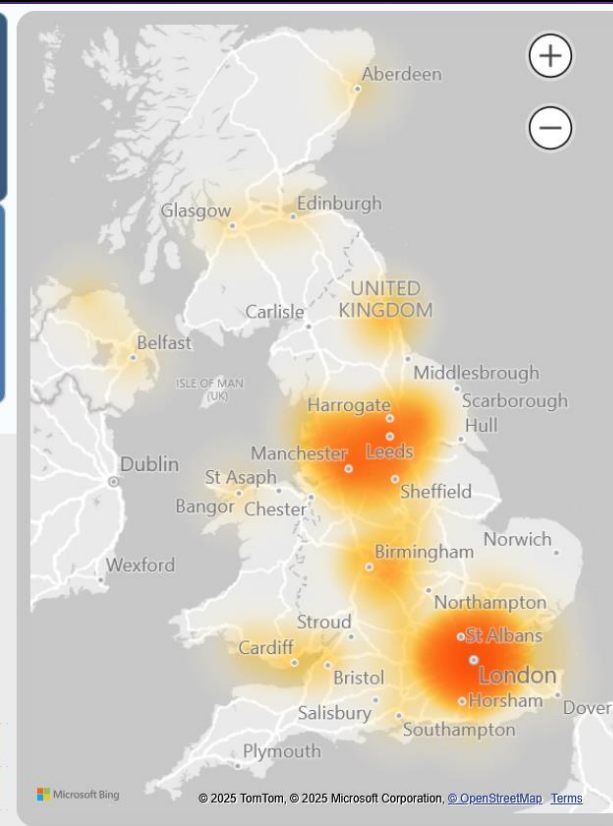
The regional spread of provision for Linguistics has changed, with more provision in larger cities and outside of London in 2022/23 than in 2011/12

Regional spread of provision: Linguistics

2011/12



2022/23



These maps show how the regional distribution of 'Linguistics' subject provision has changed over time for first-year degree UK-domiciled students aged 20 and under.

- There has been a slight increase in the number of providers offering 'Linguistics' related courses, with 41 providers in 2022/23 (an increase of 8 from 2011/12).
- **Hot spots:** London/SE, Yorkshire/North West and the Midlands are major hot spots for Linguistics provision including Russell Group and non-Russell Group providers. There has also been a broadening of provision in Scotland from East to West.
- **Cold spots:** There is less access to provision in Central Wales, the South West and Scotland overall/Cumbria, highlighting a disparity for students living in those areas compared to the other regions in England and especially larger cities.

Key: multiple providers (orange), single providers (yellow), and no provision (white) within a 60km commutable distance

THANK YOU

MARKET AND STUDENT INSIGHT TEAM

For any questions, please contact: Alexandra Martin Hernandez alexandra.martinhernandez@manchester.ac.uk