

Change in SHAPE subjects' provision in the UK (2011/12 – 2022/23)

[Presentation created by the **Market and Student Insight Team**]

Analysis and considerations

This summary report has been created using the British Academy's SHAPE Observatory interactive tool to analyse the provision of SHAPE subjects in UK higher education institutions.

Key considerations:

1. Time Frame: The data covers the academic years from 2011/12 to 2022/23

2. Data Representation: The tool uses HESA data to show provision for first-year first degree UK-domiciled students aged 20 and under. The tool uses Full-Person Equivalent (FPE) rather than headcount to represent student engagement in courses. Data includes joint honours courses, with the equivalent FPE divided between relevant subjects.

3. The analysis covers two dimensions:

- **Higher education providers:** The maps show how the demand of SHAPE subjects has changed over time, highlighting providers recording low/no change in student FPE, providers recording an increase in student FPE, and providers recording a decrease.
- **Regional spread of provision:** The maps show how the regional distribution of SHAPE subject provision has changed over time, highlighting areas with multiple providers, single providers, and no provision within a 60km commutable distance.



The University of Manchester

Law

'Law' has recorded a significant increase in the total demand (doubling the student FPE since 2011/12), making it the third most popular SHAPE subject in 2022/23

Change in demand of first-year degree UK-domiciled students aged 20 or under	2011/12	2022/23	Change in FPE (#)	Change in FPE (%)
<u>Subject:</u> Law	13,825	21,430	+7,605	+55%

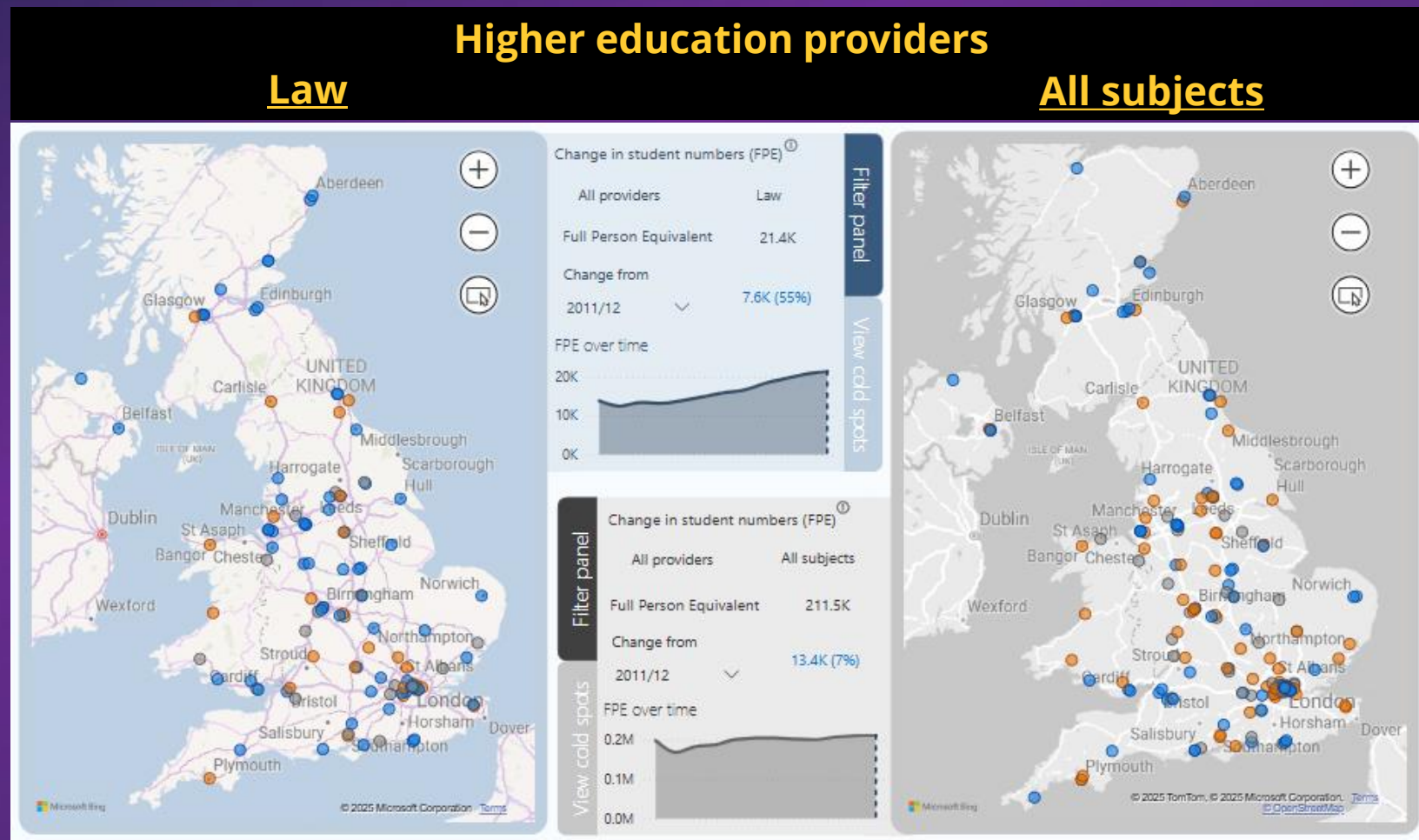
Change in number of providers offering courses in subject	2011/12	2022/23	Change in providers (#)	Change in providers (%)
<u>Subject:</u> Law	103	119	+16	+16%

- **Total demand:** There has been a significant increase in the total demand of first-year first degree UK-domiciled students aged 20 and under for 'Law' doubling the student FPE since 2011/12 (from 13,825 in 2011/12 to 21,430 in 2022/23). Demand in 'Law' related courses has consistently increased year-on-year making it the third most popular SHAPE subject, based on student FPE volume.
- **Providers:** 'Law' is a widely taught subject and has been over time, meaning the number of providers has remained mostly stable since 2011/12 (slight increase +16%, equates to 16 providers). Considering the significant increase in demand, this shows a positive outlook for recruitment across all providers offering courses in 'Law' (see next slide for more detail).

Positive outlook for 'Law' courses as most providers recorded an increase in student FPE since 2011/12, consistent with the significant increase in demand for the subject

These maps show change in demand of first-year degree UK-domiciled students aged 20 and under by provider for the subject group 'Law' vs. all.

- The significant increase in the total demand for 'Law' (+55% student FPE since 2011/12) is consistent across most providers recording an increase in total student FPE.
- The only RG providers recording a decrease in student FPE since 2011/12 are: Durham (-10), Leeds (-35), Sheffield (-15), and Oxford (-10).
- UoM recorded an increase of 20 student FPE (+13% increase), which is very moderate compared to the significant increase in overall demand for the subject.

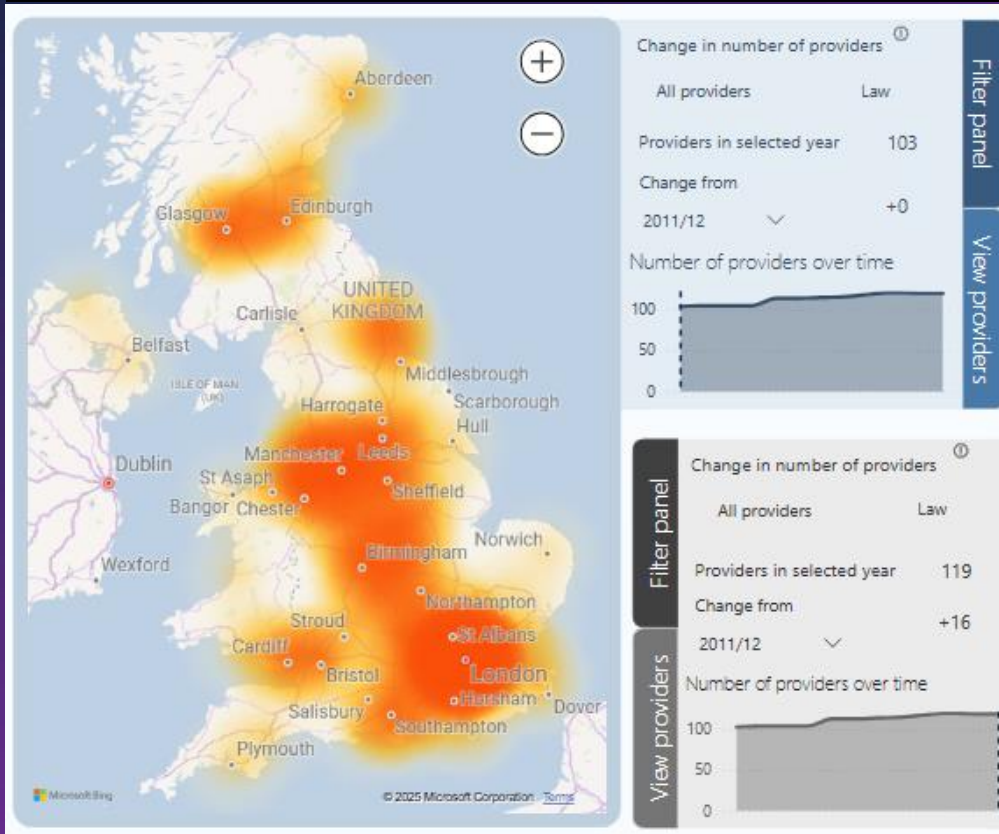


Key: Low/no change in student FPE (grey), Increase in student FPE (blue), Decrease in student FPE (orange)

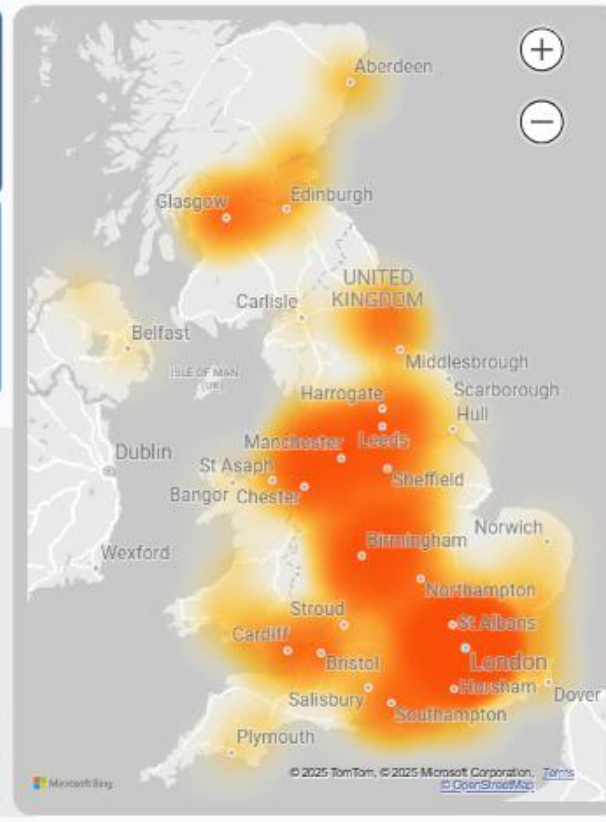
The regional spread of provision for 'Law' has remained mostly constant since 2011/12, with majority of regions in the UK as hot spots

Regional spread of provision: Law

2011/12



2022/23



These maps show how the regional distribution of 'Law' subject provision has changed over time for first-year degree UK-domiciled students aged 20 and under.

- Overall, 'Law' provision has remained mostly constant (119 providers in 2022/23 vs. 103 in 2011/12), meaning there has been little regional change to the spread of provision.
- Hot spots:** Majority of regions in the UK are hot spots with multiple providers offering courses in 'Law': London and Southeast, The Midlands, North West and North East, South Wales, and areas of Scotland (Glasgow and Edinburgh). The distribution of provision of Law generally follows the pattern for 'all subjects'.
- Cold spots:** 'Law' is a widely taught subject therefore there are few cold spots in the UK, with only Cumbria, central Wales, South West England, and areas of Scotland having more limited provision (single providers).

Key: multiple providers (orange), single providers (yellow), and no provision (white) within a 60km commutable distance

THANK YOU

MARKET AND STUDENT INSIGHT TEAM

For any questions, please contact: Alexandra Martin Hernandez alexandra.martinhernandez@manchester.ac.uk