

# Change in SHAPE subjects' provision in the UK (2011/12 – 2022/23)

[Presentation created by the **Market and Student Insight Team**]

## Analysis and considerations

This summary report has been created using the British Academy's SHAPE Observatory interactive tool to analyse the provision of SHAPE subjects in UK higher education institutions.

### **Key considerations:**

**1. Time Frame:** The data covers the academic years from 2011/12 to 2022/23

**2. Data Representation:** The tool uses HESA data to show provision for first-year first degree UK-domiciled students aged 20 and under. The tool uses Full-Person Equivalent (FPE) rather than headcount to represent student engagement in courses. Data includes joint honours courses, with the equivalent FPE divided between relevant subjects.

### **3. The analysis covers two dimensions:**

- **Higher education providers:** The maps show how the demand of SHAPE subjects has changed over time, highlighting providers recording low/no change in student FPE, providers recording an increase in student FPE, and providers recording a decrease.
- **Regional spread of provision:** The maps show how the regional distribution of SHAPE subject provision has changed over time, highlighting areas with multiple providers, single providers, and no provision within a 60km commutable distance.

# Languages and area studies

---

## Significant decrease in the total demand of first-year degree UK-domiciled students aged 20 or under for 'languages and area studies' (-39% student FPE)

Change in demand of first-year degree UK-domiciled students aged 20 or under	2011/12	2022/23	Change in FPE (#)	Change in FPE (%)
<b>Subject group: Languages and area studies</b>	<b>7,755</b>	<b>4,715</b>	<b>-3,040</b>	<b>-39%</b>
African and modern middle eastern studies	180	115	-65	-36%
American and Australasian studies	825	225	-600	-73%
Asian studies	450	610	160	36%
Celtic studies	180	100	-80	-44%
French studies	1,920	860	-1,060	-55%
German and Scandinavian studies	685	300	-385	-56%
Italian studies	300	120	-180	-60%
Others in language and area studies	1,605	1,430	-175	-11%
Russian and East European studies	210	110	-100	-48%
Spanish and Portuguese studies	1,425	865	-560	-39%

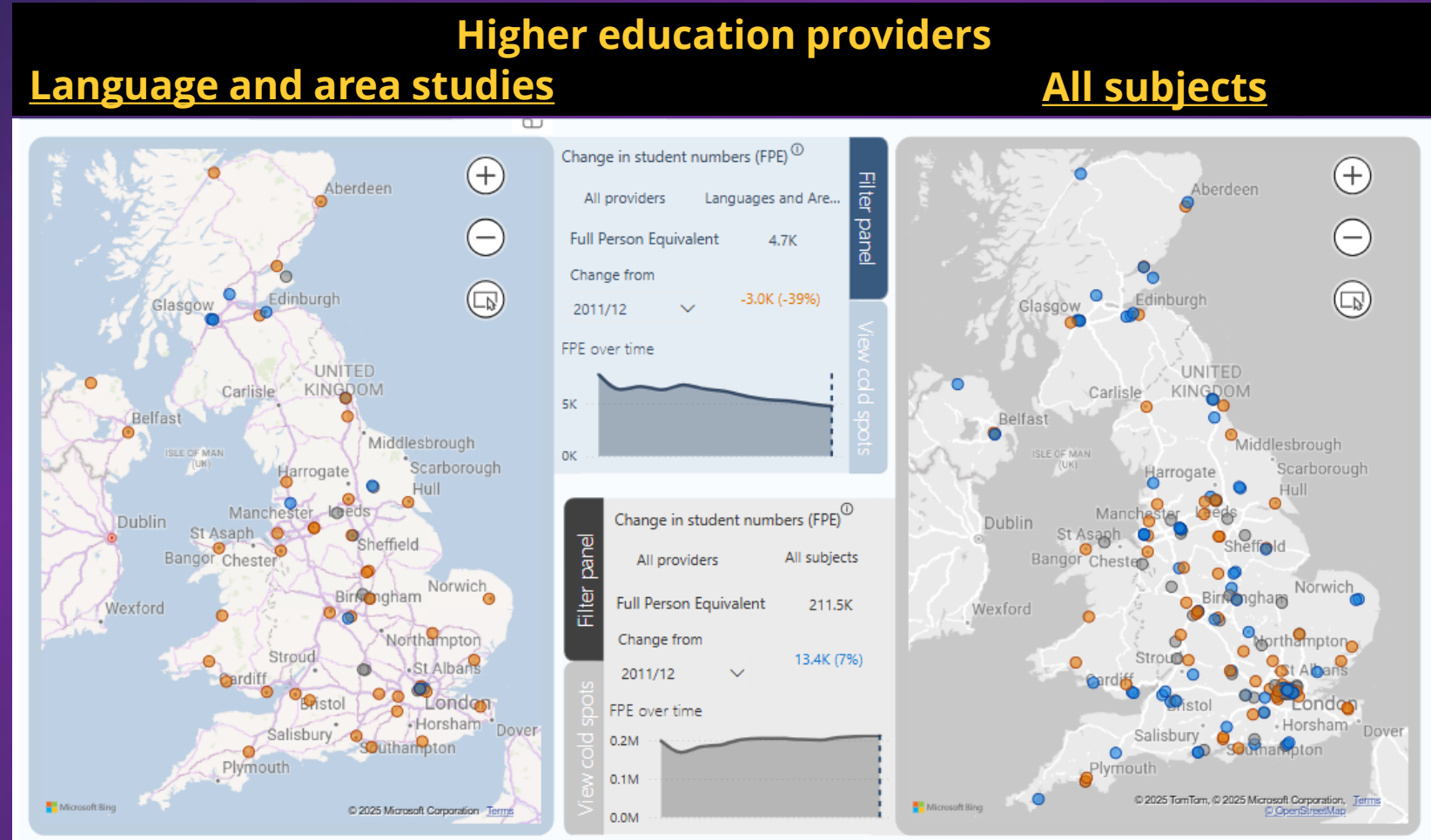
- **Total demand:** There has been a significant decrease in the total demand of 'Languages and Area Studies,' with a reduction of 39% student FPE from 7,755 in 2011/12 to 4,715 in 2022/23.
- **Overall Decline:** All subjects within 'Languages' have seen a decline in demand over the years, apart from 'Asian studies'.
  - **Asian Studies:** The only subject that has seen an increase in demand (+36% FPE), indicating a growing interest in this area.
  - **French Studies:** Despite being the 2<sup>nd</sup> most popular subject, it has experienced the largest decline in total FPE (-1,060).
  - **Spanish and Portuguese studies:** Most popular language subject with a relatively low decline in FPE compared to others (-39%).



## Decrease in demand for 'languages' has been recorded across majority of HE providers, despite an overall increase in student FPE for all subjects

These maps show change in demand of first-year degree UK-domiciled students aged 20 and under by provider for the subject group 'Languages' vs. all.

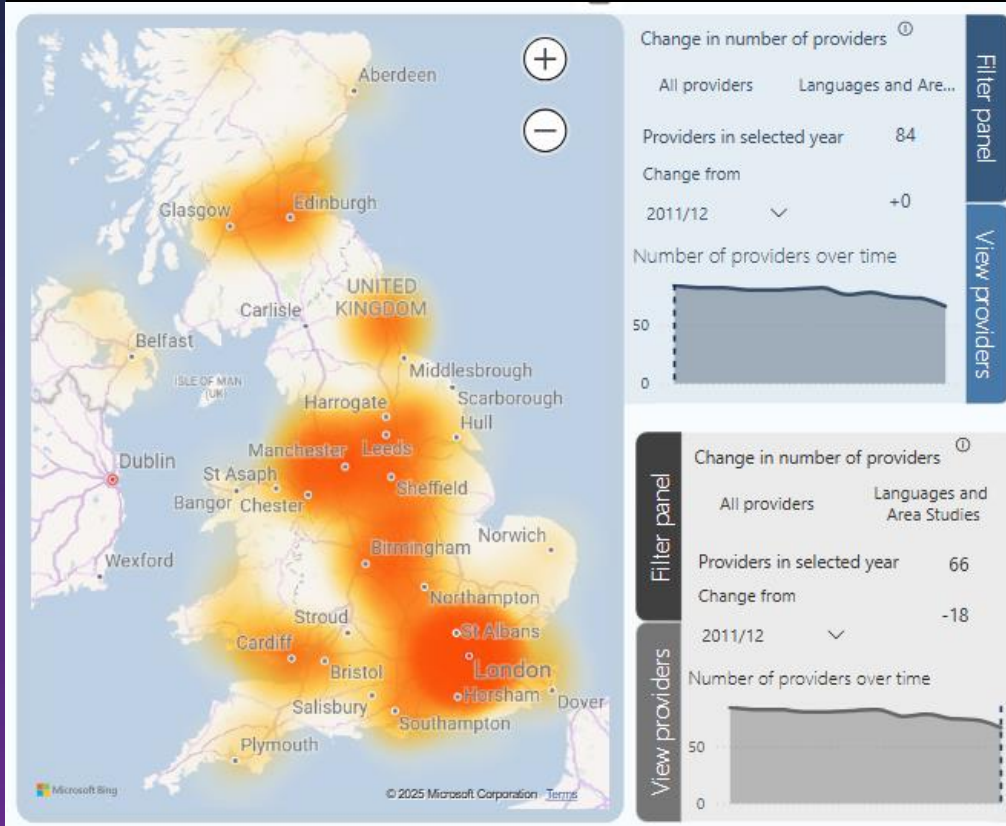
- Majority of HE providers recorded a decrease in student FPE (orange) for 'Languages' despite an overall increase (blue) for all subjects.
- Few HE providers recorded an increase in FPE for 'Languages' and there is no clear regional distribution to account for this. Some of the Russell Group providers recording an increase include: The University of Edinburgh, The University of York, The University of Warwick, UCL.
- UoM recorded a decrease of 85 FPE (a decline of -26% since 2011/12).



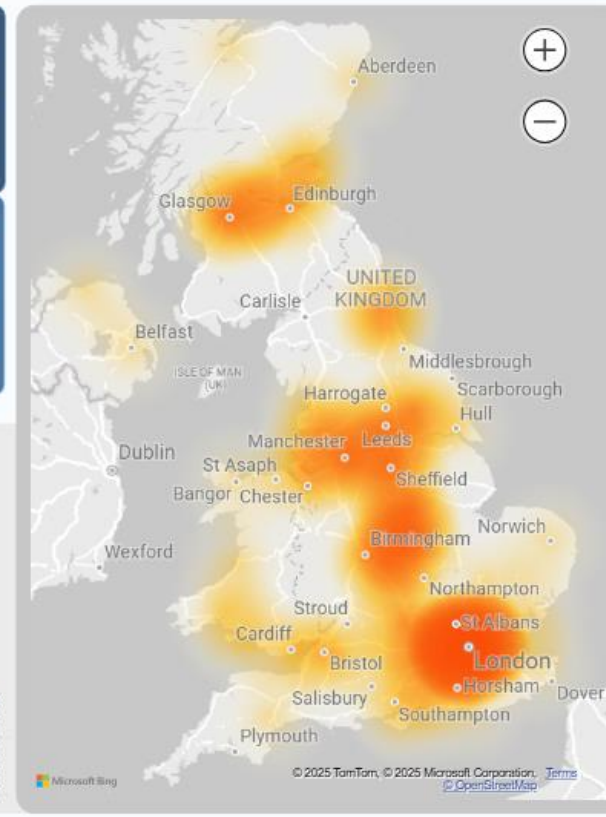
Key: Low/no change in student FPE (grey), Increase in student FPE (blue), Decrease in student FPE (orange)

# The regional spread of provision for languages has changed considerably, with more cold spots with minimal or no provision in 2022/23 than in 2011/12

## Regional spread of provision: Languages and area studies 2011/12



## 2022/23



These maps show how the regional distribution of 'Languages' subject provision has changed over time for first-year degree UK-domiciled students aged 20 and under.

- There has been a reduction in the number of providers offering language courses over time (-18 fewer providers in 2022/23 vs. 2011/12, accounts for 21% reduction).
- **Hot spots:** London and Southeast England are major hot spots for language studies provision, with strong providers like UCL, Kings, and Oxford.
- The Midlands, North West and North East also remain as hot spots despite a decrease in the number of providers offering language courses.
- **Cold spots:** Clear reduction in access to provision in South Wales and South West, as well as areas in between North West and West Midlands, and West Midlands and London highlighting the disparity of opportunity to access language studies if students live in these areas vs. hot spots.

Key: multiple providers (orange), single providers (yellow), and no provision (white) within a 60km commutable distance

# THANK YOU

---

**MARKET AND STUDENT INSIGHT TEAM**

For any questions, please contact: Alexandra Martin Hernandez [alexandra.martinhernandez@manchester.ac.uk](mailto:alexandra.martinhernandez@manchester.ac.uk)