

# Change in SHAPE subjects' provision in the UK (2011/12 – 2022/23)

[Presentation created by the **Market and Student Insight Team**]

## Analysis and considerations

This summary report has been created using the British Academy's SHAPE Observatory interactive tool to analyse the provision of SHAPE subjects in UK higher education institutions.

### **Key considerations:**

**1. Time Frame:** The data covers the academic years from 2011/12 to 2022/23

**2. Data Representation:** The tool uses HESA data to show provision for first-year first degree UK-domiciled students aged 20 and under. The tool uses Full-Person Equivalent (FPE) rather than headcount to represent student engagement in courses. Data includes joint honours courses, with the equivalent FPE divided between relevant subjects.

### **3. The analysis covers two dimensions:**

- **Higher education providers:** The maps show how the demand of SHAPE subjects has changed over time, highlighting providers recording low/no change in student FPE, providers recording an increase in student FPE, and providers recording a decrease.
- **Regional spread of provision:** The maps show how the regional distribution of SHAPE subject provision has changed over time, highlighting areas with multiple providers, single providers, and no provision within a 60km commutable distance.

# Human and Social Geography

---

**'Human and Social Geography' is a medium-sized subject with a total demand of 2,295 student FPE and 57 providers in 2022/23. However, demand and provision have fluctuated over time, recording growth from 2011/12 up to 2017/18 followed by a progressive decline**

Change in demand of first-year degree UK-domiciled students aged 20 or under	2011/12	2022/23	Change in FPE (#)	Change in FPE (%)
<b><u>Subject:</u> Human and Social Geography</b>	<b>3,040</b>	<b>2,295</b>	<b>-745</b>	<b>-25%</b>

Change in number of providers offering courses in subject	2011/12	2022/23	Change in providers (#)	Change in providers (%)
<b><u>Subject:</u> Human and Social Geography</b>	<b>60</b>	<b>57</b>	<b>-3</b>	<b>-5%</b>

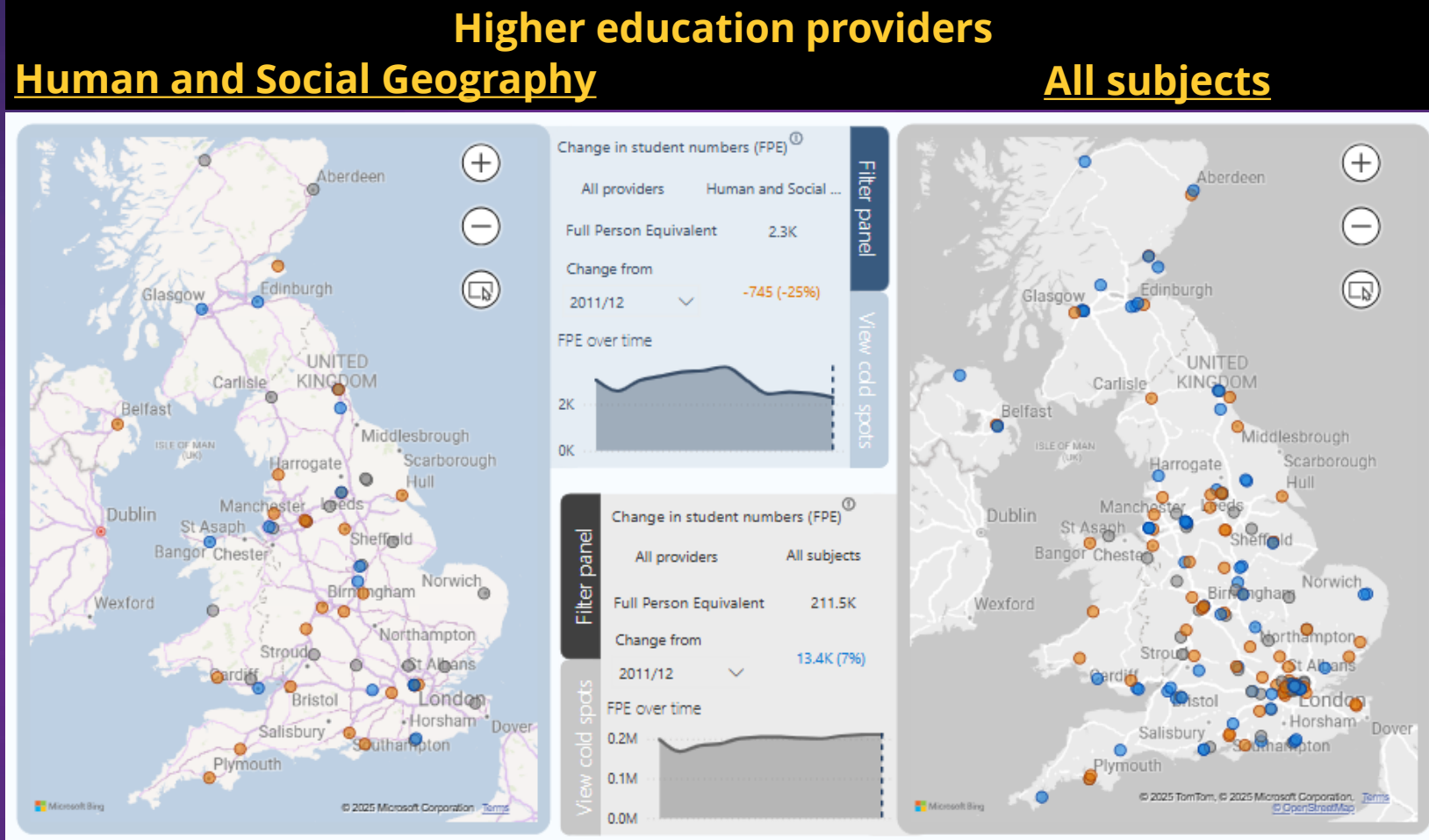
- **Total demand:** There has been a significant decrease in the total demand of first-year first degree UK-domiciled students aged 20 and under for 'Human and Social Geography' (-25% student FPE since 2011/12). Demand has fluctuated over time, recording increases from 2011/12 to 2017/18 (reaching a peak of 3,620 student FPE in 2017/18), followed by a progressive year-on-year decline from 2017/18 onwards, reaching 2,295 student FPE in 2022/23 (-1,325 student FPE, -37% decrease since the peak in demand).
- **Providers:** Provision has also fluctuated over time, with an increase in number of providers from 2011/12 (60 providers) to 2018/19 (66 providers). Followed by a reduction to 57 providers in the market in 2022/23 compared to 2011/12.



## Decrease in demand for 'Human and Social Geography' has been significant amongst non-RG, whereas changes in demand amongst RG providers vary by institution

These maps show change in demand of first-year degree UK-domiciled students aged 20 and under by provider for the subject group 'Human and Social Geography' vs. all.

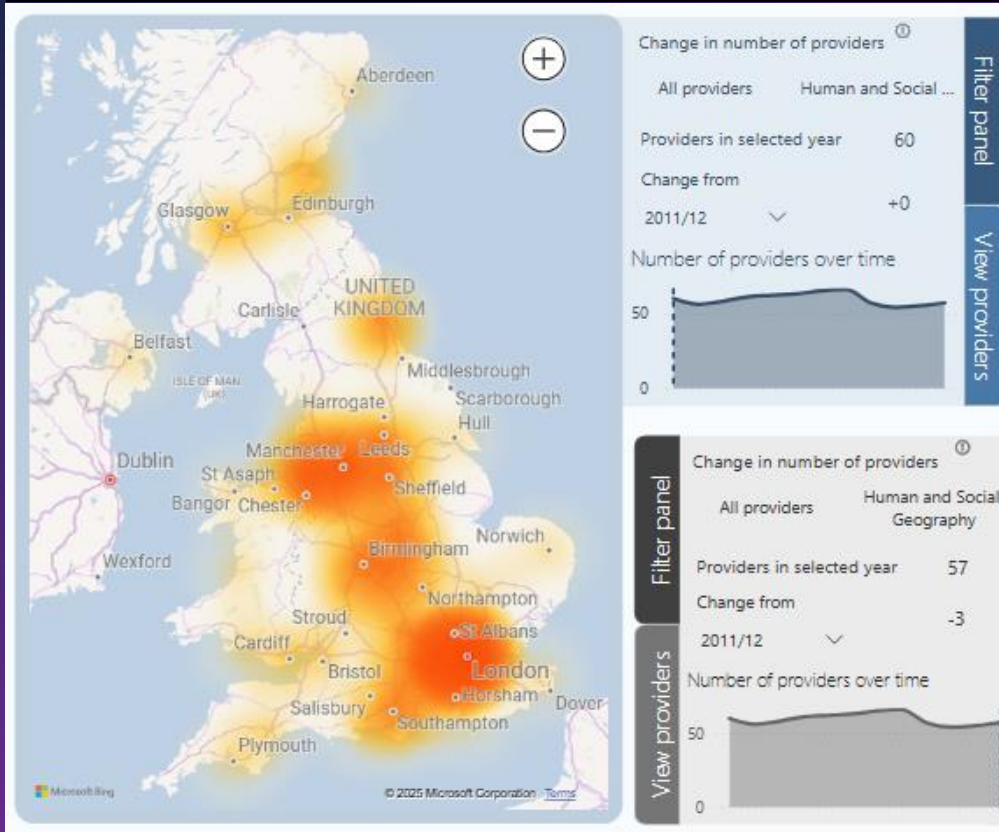
- The considerable decrease in the total demand for 'Human and Social Geography' (reduction of 25% student FPE since 2011/12) has been more significant amongst non-RG providers, with majority recording a decline or low/no change.
- The only non-RG providers recording slight growth since 2011/12 are: Loughborough, MMU, Sussex, Reading, and Bangor.
- Changes in demand amongst RG providers vary by institution, with 7 providers recording decrease in student FPE: Birmingham (-65), UoM (-100), Sheffield (-55), Southampton (-80), Kings (-35), Queens Mary of London (-55), Exeter (-10); and 10 RG institutions recording increase: Edinburgh (+25), Glasgow (+55), Durham (+30), Newcastle (+40), Leeds (+60), Liverpool (+40), Nottingham (+10), Cardiff (+85), UCL (+20), LSE (+20).



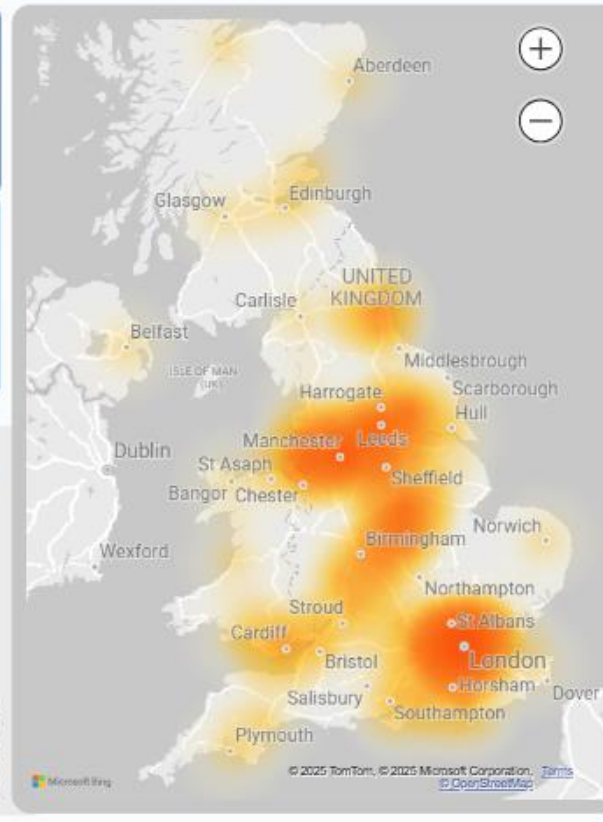
Key: Low/no change in student FPE (grey), Increase in student FPE (blue), Decrease in student FPE (orange)

## Despite the fluctuations in number of providers over time, the regional spread of provision for 'Human and Social Geography' has remained stable since 2011/12

### Regional spread of provision: Human and Social Geography 2011/12



### 2022/23



These maps show how the regional distribution of 'Human and Social Geography' subject provision has changed over time for first-year degree UK-domiciled students aged 20 and under.

- Despite the fluctuations in number of providers over time (60 in 2011/12, 66 in 2018/19, 57 in 2022/23), the regional spread of provision for 'Human and Social Geography' has remained stable.
- Hot spots:** London and Southeast, North West and parts of The Midlands remain hot spots for the subject.
- Cold spots:** Cold spots have emerged over time with provision more limited in certain areas of the UK: South Wales, East/South coast/Northeast of England, and most regions of Scotland. This, coupled with a decrease in provision in The West Midlands make access to 'Human and Social Geography' courses more challenging across the UK.

Key: multiple providers (orange), single providers (yellow), and no provision (white) within a 60km commutable distance

# THANK YOU

---

**MARKET AND STUDENT INSIGHT TEAM**

For any questions, please contact: Alexandra Martin Hernandez [alexandra.martinhernandez@manchester.ac.uk](mailto:alexandra.martinhernandez@manchester.ac.uk)