

# Change in SHAPE subjects' provision in the UK (2011/12 – 2022/23)

[Presentation created by the **Market and Student Insight Team**]

## Analysis and considerations

This summary report has been created using the British Academy's SHAPE Observatory interactive tool to analyse the provision of SHAPE subjects in UK higher education institutions.

### **Key considerations:**

**1. Time Frame:** The data covers the academic years from 2011/12 to 2022/23

**2. Data Representation:** The tool uses HESA data to show provision for first-year first degree UK-domiciled students aged 20 and under. The tool uses Full-Person Equivalent (FPE) rather than headcount to represent student engagement in courses. Data includes joint honours courses, with the equivalent FPE divided between relevant subjects.

### **3. The analysis covers two dimensions:**

- **Higher education providers:** The maps show how the demand of SHAPE subjects has changed over time, highlighting providers recording low/no change in student FPE, providers recording an increase in student FPE, and providers recording a decrease.
- **Regional spread of provision:** The maps show how the regional distribution of SHAPE subject provision has changed over time, highlighting areas with multiple providers, single providers, and no provision within a 60km commutable distance.

---

# Archaeology

---

## Moderate decrease in the total demand of first-year degree UK-domiciled students aged 20 or under for 'Archaeology' (-12% student FPE) - against slight increase in number of providers (+2)

Change in demand of first-year degree UK-domiciled students aged 20 or under	2011/12	2022/23	Change in FPE (#)	Change in FPE (%)
<b><u>Subject</u> : Archaeology</b>	<b>785</b>	<b>695</b>	<b>-90</b>	<b>-12%</b>

- **Total demand:** There has been a moderate decrease in the total demand for 'Archaeology' with a reduction of 12% student FPE from 785 in 2011/12 to 695 in 2022/23.
- **Providers:** Against a decrease in demand, there has been a slight increase in providers offering Archaeology, with two more in the market in 2022/23 when compared to 2011/12.

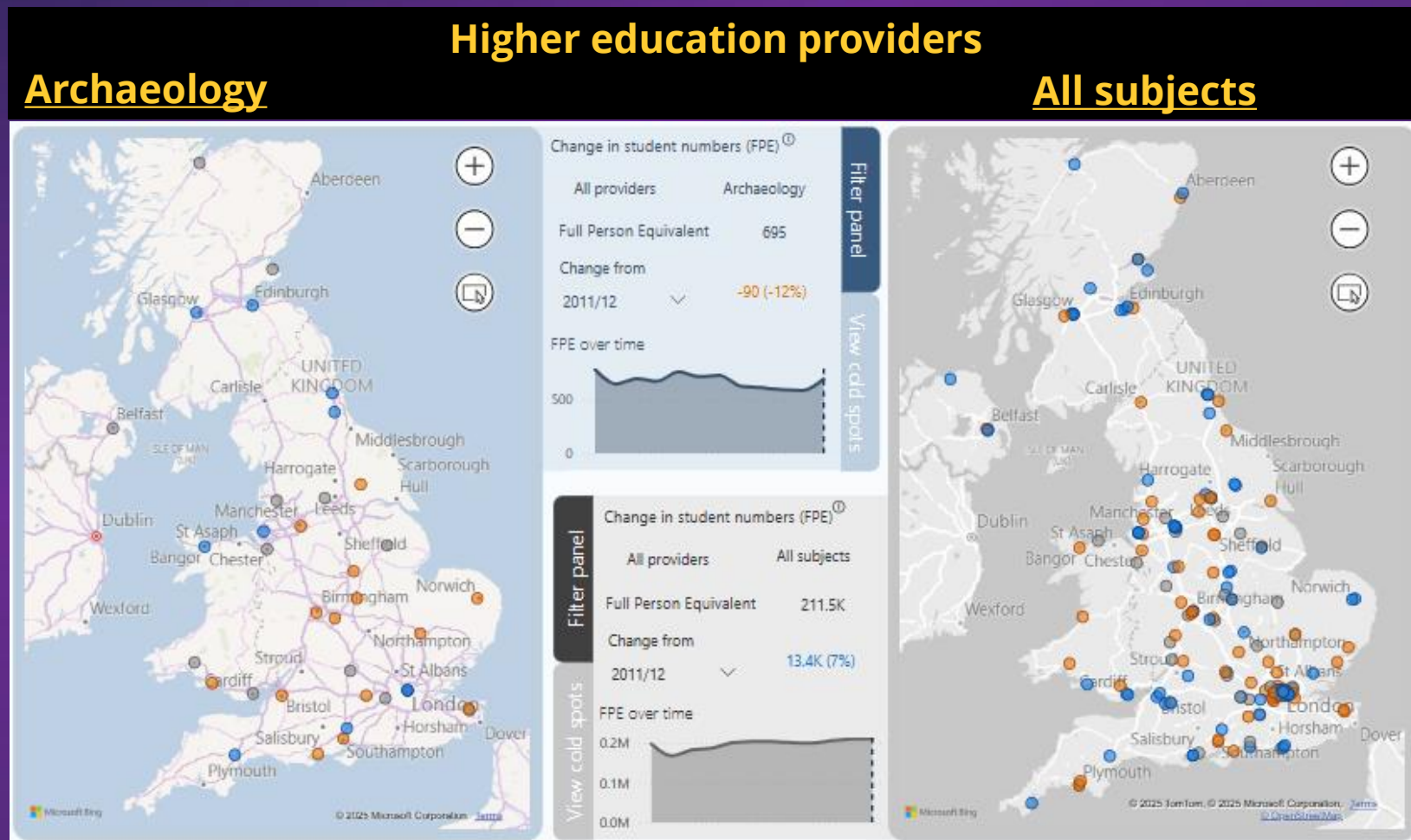
Change in number of providers offering courses in subject	2011/12	2022/23	Change in providers (#)	Change in providers (%)
<b><u>Subject</u> : Archaeology</b>	<b>34</b>	<b>36</b>	<b>+2</b>	<b>+6%</b>



## Decrease in demand for 'Archaeology' has been recorded across a range of providers, both RG and non-RG

These maps show change in demand of first-year degree UK-domiciled students aged 20 and under by provider for the subject group 'Archaeology' vs. all.

- In line with a shrinking market, most providers have seen falls or no change in students, both RG and non RG.
- The providers that have seen the largest falls are Bristol (-91% since 2011/12), Nottingham (-66% since 2011/12) and Cambridge (-66% since 2011/12) - these latter two percentage falls match that at UoM (-66% since 2011/12).
- The largest growth was at UCL (growing by 300% from 5 to 20), Winchester (+77% since 2011/12), followed by Durham and Exeter (+48% and +49% since 2011/12 respectively)
- Durham is the largest institution in the subject area, with 80 registrations in 2022/23



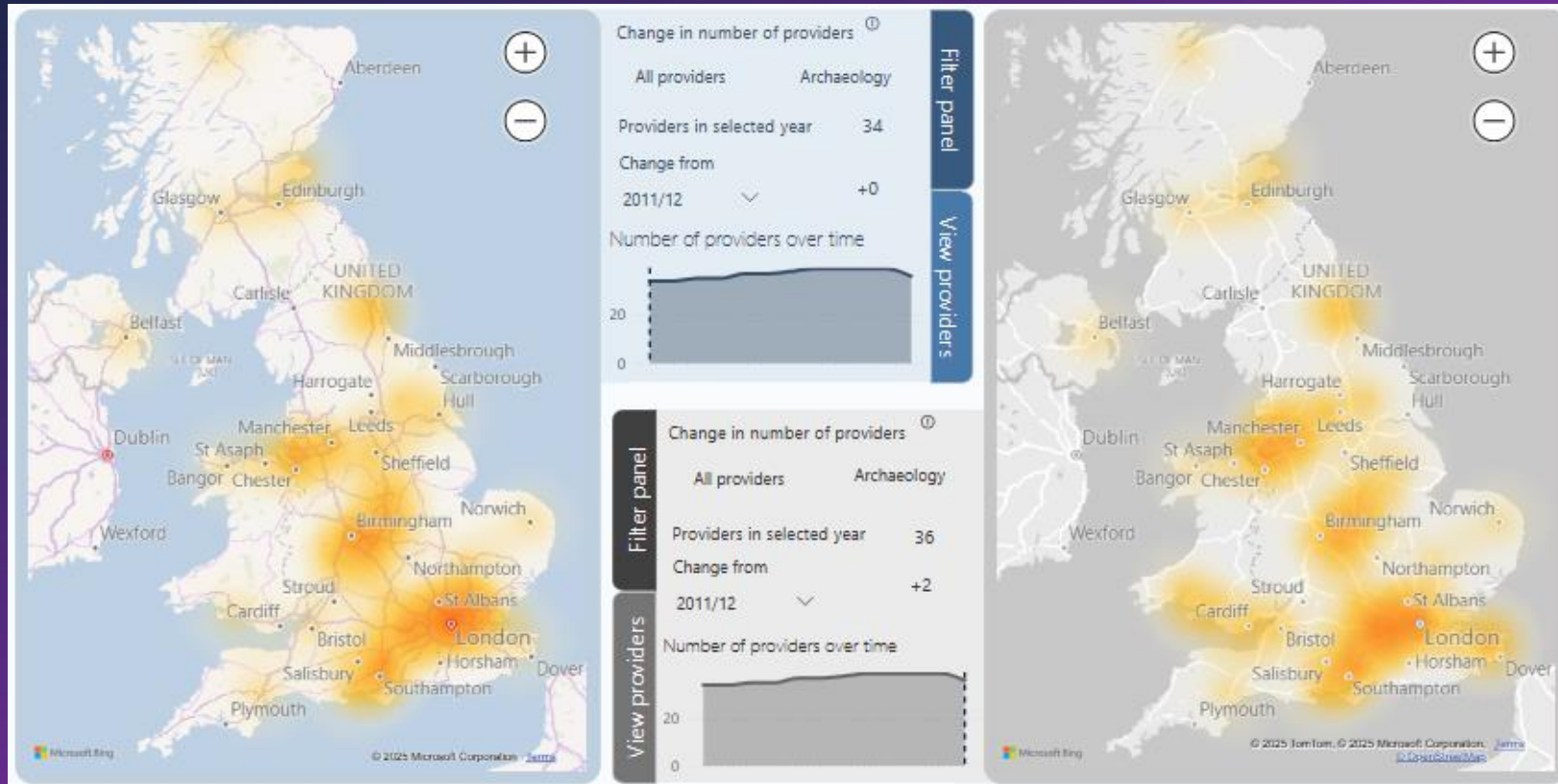
Key: Low/no change in student FPE (grey), Increase in student FPE (blue), Decrease in student FPE (orange)

# The regional spread of provision for 'Archaeology' has slightly changed with a mix of cold spots and hot spots, across the UK

## Regional spread of provision: Archaeology

2011/12

2022/23



Key: multiple providers (orange), single providers (yellow), and no provision (white) within a 60km commutable distance

These maps show how the regional distribution of 'Archaeology' subject provision has changed over time for first-year degree UK-domiciled students aged 20 and under.

- There has been a slight increase in the number of providers offering the subject, although the maps show there have also been closures over the period
- **Hot spots:** The UK's major conurbations (London/SE, W Midlands, North-West) are major hot spots for archaeology provision, while there is also strong provision in the North-East.
- There has also been growth in provision in South Wales, as Cardiff and Trinity St David have opened provision
- **Cold spots:** Archaeology is not widely taught across the UK, but cold spots have grown in East and South Yorkshire, as Hull and Sheffield have closed provision (although Bishop Grosseteste and Bradford have opened provision), and the W Mids/Welsh Borders, as Worcester has closed provision

# THANK YOU

---

**MARKET AND STUDENT INSIGHT TEAM**

For any questions, please contact: John Ledger [john.ledger@manchester.ac.uk](mailto:john.ledger@manchester.ac.uk)