

MANCHESTER
1824

The University of Manchester

MEDICINE AT MANCHESTER



WELCOME TO **THE UNIVERSITY OF MANCHESTER**

We are delighted you have chosen to consider us as one of your university choices and we want to wish you all the best with your application.

This pack has been designed to give you an insight into what it's like to study here.

TOP TEN

Become the best doctor you can with a degree at one of the country's largest and most innovative medical schools, ranked in the Top 10 in the UK for Medicine. (QS World University Rankings, 2024)

CONTENTS

- P04
CHOOSE MANCHESTER
- P06
BEING A MEDICINE STUDENT
- P08
NOT YOUR AVERAGE DEGREE
- P10
THE CLINICAL YEARS
- P12
CREATING MEMORIES
- P14
FACILITIES
- P16
A WORLD OF OPPORTUNITIES
- P18
ANY QUESTIONS?

CHOOSE MANCHESTER



WE WILL LOOK AFTER YOU

We are the largest medical school in the UK but have some of the smallest class sizes. This means you'll be part of both a vibrant and supportive community that helps you get the most out of your time here.

Our peer mentoring scheme pairs you with a medicine student in the year above who can provide support and share their experiences to help you as you progress through the course.

We also host dedicated welcome events and you'll have access to over 50 student-run medical societies, providing opportunities to connect and explore your interests outside of your studies.



BE TAUGHT BY SPECIALISTS

Manchester has a wealth of expertise in medical education. You'll learn from NHS clinicians and award-winning academics, gaining the latest insights and applying them throughout your studies and placements.



INTERCALATE

Gain new skills or build on existing knowledge, while experiencing a different kind of study, with intercalation. Take an additional year to study a particular area allied to our medical courses in depth.



EARLY CLINICAL EXPERIENCE

Get clinical experience from Year 1 and apply your learning to real-life situations, working with patients from diverse backgrounds, in a range of hospital and community environments.



PERSONALISED LEARNING

Our Personal Excellence Path (PEP) offers personalised learning through focused topics and projects, while student-selected placements (SSCPs) and electives allow you to explore specialities and shape your future career.



"THE BEST THING ABOUT STUDYING AT MANCHESTER IS THE EXPERIENCE I GET THROUGH BEING IN A BIG CITY. THERE ARE SO MANY HOSPITALS, AND WE GET PLANNED TEACHING TIME FROM CONSULTANTS. I AM ALWAYS SO GRATEFUL TO HAVE THIS OPPORTUNITY TO LEARN FROM THE BEST IN THEIR FIELD."

Humna Amar, Year 4 MBChB Medicine student

BEING A MEDICINE STUDENT

YIBEI KANG, A THIRD-YEAR MBCHB STUDENT, SHARES HER EXPERIENCES SO FAR

PRACTICAL LEARNING

During Year 1 and 2 we mainly focus on learning bioscience knowledge, but the course still provides lots of practical experience early on. For example: weekly consultation skills in the mock ward on campus learning history taking, examinations and working with actors as simulated patients to practice communication skills. We also have physiology and pharmacology practicals, and GP and hospital visits. These allowed me to experience different environments.

CLINICAL CASES

We are presented with one clinical case per week, which is a patient's story about one or two pages long. Guided by the case, we could be

learning about anything from medical conditions to physiology or law and ethics. During the first semester of Year 2, we focused on learning the nervous system. I had clinical cases on topics such as stroke, depression and the visual pathways.

ANATOMY

Weekly anatomy studies align with the clinical case of the week. We learn the content independently before attending tutorial and dissection sessions. We are provided with several resources to support us, including an interactive app that allows you to view 3D models! Initially, I found the independent learning aspect of anatomy challenging, but now I enjoy learning the anatomy content at my own pace.



TEAM-BASED LEARNING

Each semester I am allocated to a new, small group of medical students. We then have all the sessions together over that semester. This allows me to form a close bond with group members; we study together and motivate each other. I like this because I get to know more people too.

LECTURES

I find lectures extremely helpful because they cover most of the content we are required to learn for the week's case. The lectures are also published online so I can watch and take notes at my own pace. Nearly all are delivered by different people, from professors and researchers to clinicians, so, there is a freshness to every lecture.



"MY TIME AT MANCHESTER HAS BEEN INCREDIBLE. THE MEDICAL SCHOOL IS VERY SUPPORTIVE, WITH A RANGE OF DIFFERENT PEOPLE AND SERVICES YOU CAN USE. LECTURERS ARE ONLY AN EMAIL AWAY IF YOU NEED THEM."

Jamshaid Karim, Year 4 MBChB Medical student

NOT YOUR AVERAGE DEGREE



SERVICE LEARNING AT MANCHESTER

Service learning gives you the opportunity to undertake voluntary practical work to expand your knowledge and network while providing an important service to local people.

SYLVIA'S STORY

"The Medics in Primary Schools (MiPS) society is a widening participation project that aims to teach local primary school students about basic medicine-related topics. We aim to educate but inspire primary school students to consider higher education (and possibly medicine or life sciences) in the future.

We have been working with various schools in Manchester to deliver our sessions for almost ten years! Alongside this, we often provide volunteers or run mini sessions for events that are put on by the medical school and Access All Areas (part of The University of Manchester Students' Union volunteering).

The main highlights of the project have included the great interest from medical students wanting to volunteer; we had around 60 students volunteering for us this year and reached around 150 Year 5/6 students in our first semester alone."

STAND OUT

At Manchester, you will have plenty of opportunities to gain new experiences and skills outside of your MBChB studies. For example, you can intercalate and explore a different field of study, or get involved in voluntary work through our service learning programmes, both of which enrich your medical education and personal development.



"MY INTERCALATION YEAR TAUGHT ME THE BASIS OF CERTAIN TESTS THAT DOCTORS HAVE TO DO ON WARDS AND GAVE ME A LOT OF RESEARCH OPPORTUNITIES, WHICH COULD BE USEFUL AS A MEDIC. I VALUED STUDYING WITH A VARIETY OF STUDENTS."

James Rosario, MBChB Medicine student and biosciences intercalating student



INTERCALATION

Intercalation is an opportunity available to all medical students at Manchester. The idea is to take a year out of your medical studies to obtain a degree in another academic area. Intercalation can help you gain new skills, strengthen your CV or develop a strong foundation for a career in academic medicine.

CATRIONA'S STORY

"During my intercalation year on the Medical Sciences MRes, I am investigating relationships between symptoms of PTSD and health behaviours, such as medication adherence, in patients who have cardiac rehabilitation after a serious cardiac diagnosis.

There is evidence that PTSD symptoms may make patients less likely to make healthy lifestyle choices that reduce their risk of future cardiac problems. If this relationship can be better understood, changes could be made to cardiac rehabilitation that improve outcomes for patients with PTSD.

Overall, my choice to pursue mental health research during my MRes has strengthened my desire to become an academic psychiatrist, and I have no doubts that my experiences on my intercalated year will be of great benefit on that journey."



THE CLINICAL YEARS

YEAR 5 STUDENT CATRIONA TALKS YOU THROUGH HER EXPERIENCE

HOW CLINICAL YEARS WORK

During Year 3 to 5 of the medical degree at Manchester, you rotate between specialties every 4-5 weeks. This allows you to gain experience across most areas of medicine, so nothing should be too unfamiliar when you start work as a doctor.

Depending on the speciality, your placement shifts might cover the wards, outpatient clinics, community services or theatre.

YEAR 3

In Year 3, you rotate through specialties that are considered more general and 'bread and butter' in medicine. My rotations were gastroenterology, respiratory medicine, renal medicine, surgery and cardiology.

You also complete a placement at the end of the year in an area of your choice. I joined the Specialist Mobility Rehabilitation Centre in Preston, which is an outpatient service for amputees.



YEAR 4

In Year 4, you progress onto two rotations of specialties: Mind and Movement (M&M), and Family and Child (F&C). You complete either M&M or F&C and then switch to the other rotation after exams in January.

In M&M, you rotate between orthopaedics, rheumatology, ophthalmology, ear, nose and throat (ENT), neurology, mental health, and geriatrics. F&C includes paediatrics, general practice, obstetrics and gynaecology, dermatology, oncology, and breast surgery.

Some of these placements last for four weeks, whereas others are only one week in duration – Year 4 is definitely a whistle-stop tour of the NHS!

At the end of Year 4, students go on an elective placement of their choice, which can be anywhere in the world. Some choose to go to sunny countries and see how other healthcare systems work, whereas others choose placements in a speciality they want to build a CV in.

I chose to stay local and joined the psychiatry team I had spent my earlier mental health placement with, so I could continue my part-time job during the placement.



YEAR 5

In Year 5, the focus is on preparation for practice. Before the exams needed to qualify as a doctor in the spring, you rotate between general practice, medicine, surgery and acute care like A&E. Although every specialty is different, many of my placement shifts fit into a similar daily routine.

I really enjoy the opportunity to apply my learning on placement and seeing how I can apply the theory to patients in real life.

"DURING A GP VISIT I HAD THE OPPORTUNITY TO TAKE BLOOD PRESSURES ON PATIENTS FOR THE FIRST TIME. IT WAS A SURREAL MOMENT TRANSITIONING FROM PRACTICING ON CLASSMATES AND SIMULATED PATIENTS TO INTERACTING WITH ACTUAL PATIENTS. THE EXPERIENCE WAS BOTH FUN AND REWARDING, AS I WAS ABLE TO ENGAGE WITH PATIENTS IN A MEANINGFUL WAY. I ENJOYED THE HANDS-ON ASPECT OF THE PLACEMENT AND FELT A GROWING SENSE OF CONFIDENCE IN MY ABILITIES."

Fawaz Abidoeye, MBChB Medicine student



CREATING MEMORIES



JOIN THE MEDICINE FAMILY

Our peer mentoring programme helps you connect with students in the years above and help you settle into medical school and university life.

OUTSTANDING ANATOMY FACILITIES

We have exceptional anatomy facilities and teaching that enable you to learn about the intricacies of the human body through using human specimens, and innovative e-learning resources.



STUDYING FOR SUCCESS

We understand this year will be different and difficult. Keep going and don't lose sight of your goals. You can do this!



A CHANGE OF SCENE



SOCIETIES



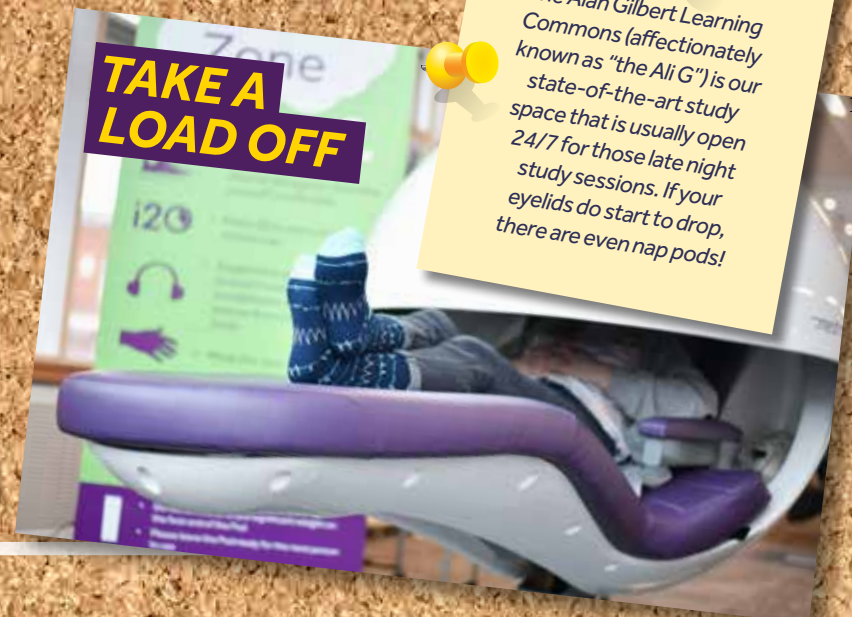
There's a tonne of societies to choose from. You could explore a hobby, pick up a sport or gain new skills (plus make some friends on the way).

PRACTICE MAKES PERFECT



Attend sessions in the Consultation Skills Learning Centre, where you can consult with simulated patients played by actors and practice clinical skills on colleagues and our SimMan.

TAKE A LOAD OFF



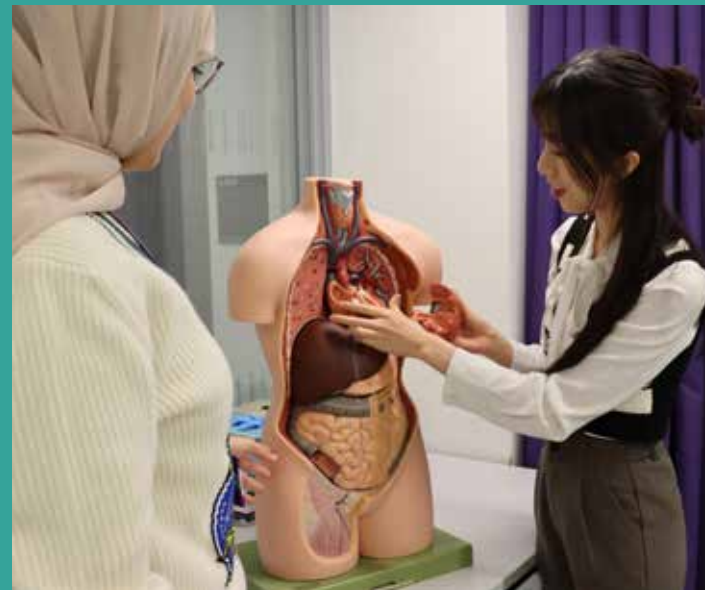
The Alan Gilbert Learning Commons (affectionately known as "the Ali G") is our state-of-the-art study space that is usually open 24/7 for those late night study sessions. If your eyelids do start to drop, there are even nap pods!

MEDICINE FACILITIES

As part of your on-campus learning, you'll make full use of our clinical and simulation equipment, which is designed to provide you with a safe, realistic and pleasant learning environment for training in a range of clinical skills.

Check out the incredible range of equipment in the medicine department as Minahil talks you through our facilities in this short film.

<https://uom.link/medicinefacilities>



A WORLD OF OPPORTUNITIES

WITH YOUR WORLD-CLASS DEGREE, THERE ARE SO MANY OPTIONS ONCE YOU GRADUATE.

Upon successfully completing your Medicine course at Manchester, you will receive an MBChB (or equivalent) degree. This will enable you to apply for provisional registration with the General Medical Council UK (GMC). You can then apply to begin foundation training and go on to apply for full registration with the GMC.

EXTENSIVE CAREERS SUPPORT

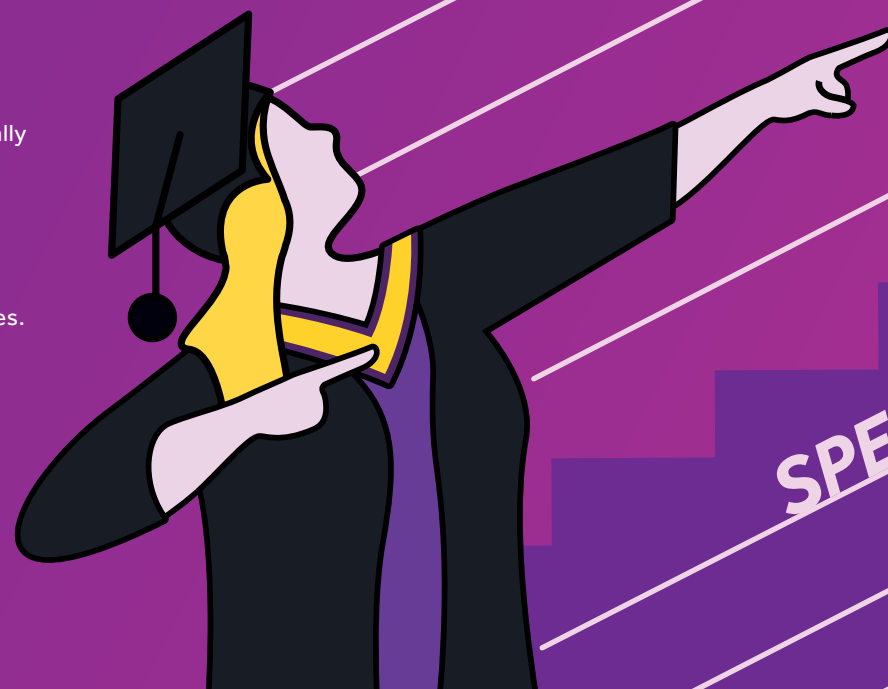
Receive guidance on entering your chosen career from your academic advisor, as well as from our award-winning, AGCAS-accredited careers team (Association of Graduate Careers Advisory Services, 2024).

SPECIALITY TRAINING

After your foundation training, you may choose to undertake further training to specialise in a medical field of your interest, such as paediatrics, psychiatry, or general practice. Speciality training typically ranges from three to eight years.

GOING FURTHER

Other career opportunities include medical and scientific research, medical health education, occupational health or NHS leadership roles. You could explore further educational opportunities through our postgraduate programmes at The University of Manchester too.



PUBLIC HEALTH

NHS HOSPITALS / NHS PRACTICE TRUSTS /
GOVERNMENT HEALTH DEPARTMENTS

PRIVATE HEALTHCARE

PRIVATE HOSPITALS / PRIVATE HEALTHCARE ESTABLISHMENTS / RESIDENTIAL NURSING HOMES

RESEARCH & ACADEMIA

RESEARCH INSTITUTES / CLINICAL TRIAL ORGANISATIONS / UNIVERSITIES

SPECIALIST & EMERGENCY SERVICES

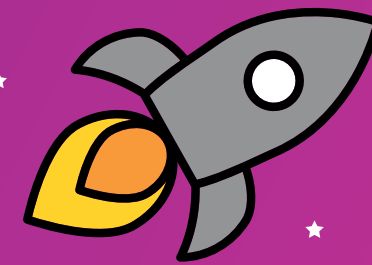
AIR AMBULANCE SERVICES / ARMED FORCES / ROYAL NATIONAL LIFEBOAT INSTITUTION

COMMUNITY & INTERNATIONAL AID

OVERSEAS AID AGENCIES / PRISON SERVICES

SPECIALIST AREAS

NEONATAL / PAEDIATRICS /
EMERGENCY MEDICINE / MEDICAL
LAW / HEALTH CONSULTANCY





"THE BEST THING ABOUT MY COURSE IS THE HANDS-ON LEARNING MANCHESTER PROVIDES LIKE DISSECTIONS, GP AND HOSPITAL PLACEMENTS AND CONSULTATION SKILLS SESSIONS. MANCHESTER ALSO HAS A WIDE VARIETY OF SOCIETIES AND EVENTS THAT GUARANTEE YOU AN AMAZING TIME AT UNIVERSITY."

Hiyah Khandelwal, Year 2 MBChB Medicine student

ANY QUESTIONS?

We're here to help!

Don't hesitate to contact our friendly admissions team with any queries you may have.

MEDICINE ADMISSIONS TEAM

PHONE:

+44 (0)161 529 4577

EMAIL:

ug.medicine@manchester.ac.uk

Disclaimer

This brochure is prepared well in advance of the academic year to which it relates. Consequently, details of the courses may vary with staff changes. The University therefore reserves the right to make such alterations to courses as are found to be necessary. If the University makes an offer of a place, it is essential that you are aware of the current terms on which the offer is based. If you are in any doubt, please feel free to ask for confirmation of the precise position for the year in question, before you accept the offer.

Royal Charter Number: RC000797

Date of publication: March 2025