

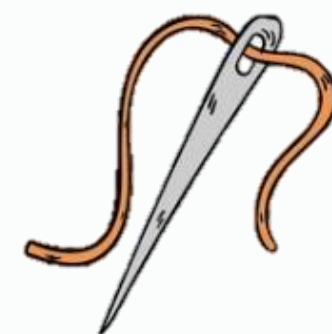


**ARE YOU A
LOVER OR
A HATER?**



RESEARCH COMMUNICATIONS CONFERENCE 2025

FINDING THE NEEDLE IN THE

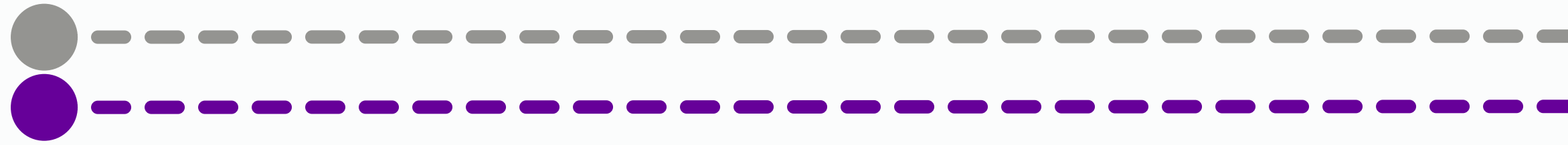


HAYSTACK



USING RESEARCH EXPLORER TO FIND UNIVERSITY
EXPERTISE

Laura Turner, Research Information & Systems Officer



- 01 What is Research Explorer?
- 02 Why use Research Explorer?
- 03 What data is in there?
- 04 How we keep it up to date
- 05 Types of search
- 06 Filtering your results
- 07 Use cases
- 08 Takeaways
- 09 The future
- 10 Help & Support

A decorative graphic on the right side of the slide. It features two concentric, light purple curved lines that sweep from the bottom left towards the top right. A small, four-pointed star is positioned at the end of the top curve, pointing towards the word 'AGENDA'.

AGENDA

So, how do we find the needle?



WHAT IS RESEARCH EXPLORER?



Research Explorer is a web based searchable database of all publicly available data held in Pure

Pure is the University's research information system

It allows users to search across a wide range of information about the research that happens at the University

Its available via the University's website at research.manchester.ac.uk/en

It's optimized for search engines and is checked against the WCAG 2.1 AA standard for accessibility

Lots of Universities have something similar if you're looking beyond UoM

WHAT IS PURE? (a very quick recap)



Pure is the University's research information system

In use since 2016. Prior we had lots of separate systems and spreadsheets

It's the system in which all of the publicly available records are made visible to Research Explorer

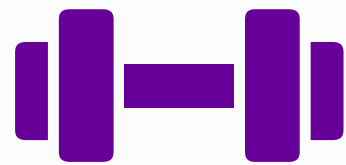
It's a commonly used system across UK universities, and globally

It uses common data standards to help transfer data easily when required

It supports a number of business processes including –

- Institutional repository
- Grant and Contract records and approvals
- Review of outputs (RRE)
- REF preparation and submission system
- Provides a platform to showcase PhD theses (via Research Explorer)

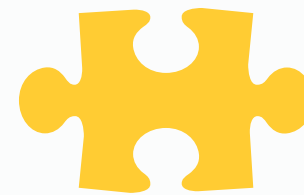
WHY USE RESEARCH EXPLORER?



Lots of information

In excess of half a million pages
including 5600 staff and PGR
profiles.

256,000 page views since 1st Jan



Constantly updating

It updates in real time, so
information is constantly being
added

Not a static list or spreadsheet



Searchable

It's got a great search engine
Lots of ways to search and filter

Pages complimentary to other
University websites

WHAT DATA IS IN THERE?



Publications (articles, books, conference contributions, reports) 263,983 15,993



PhD theses (OA theses from 2010 to date) 13,153 1111



Activities (events, memberships, internal roles) 20,806 1,860



Datasets (underlying data and how to access it) 7,570 454



Press (blogs, media appearances, expert comment) 8,165 610



Facilities & Equipment (How to book, who can access) 364 222



Prizes (everything from best poster to Nobel prize) 4,896 699




Profiles (Academic staff and PGR students) 5,691



Sam Hay

Professor of Biophysical Chemistry, Prof
Professor, **Computational and Theoretical Chemistry**

 <https://orcid.org/0000-0003-3274-0938>

Email

sam.hay@manchester.ac.uk

Accepting PhD Students

PhD projects

We are always happy to speak to students who wish to undertake a PhD in computational or biophysical chemistry. We recruit from a wide range of backgrounds, including biochemistry, chemistry, physics, engineering, applied mathematics and computer science.

- Sam Hay public CV



 **Overview**  Fingerprint  Network  Research output (139)  Projects (9)  Activities (2)  Datasets (2)  Press/Media (1) 

Personal profile

Overview

Background:

The Hay group are interested in how biological processes – reactions and interactions – are governed by their underlying physics/physical chemistry. The main focus of this work is the role of protein dynamics and quantum mechanics during enzyme catalysis and the use of proteins and enzymes as structural and/or functional biomaterials and sensors. This work employs both experimental and theoretical approaches, with an emphasis on instrument and method development and the development of new theory and models to underpin experiment. Much of the work involves computational chemistry, often combining molecular dynamics (MD) simulations with enzyme active site density functional theory (DFT) ‘cluster’ models.

Areas of expertise

QD Chemistry biophysics and computational chemistry

Research Beacons, Institutes and Platforms

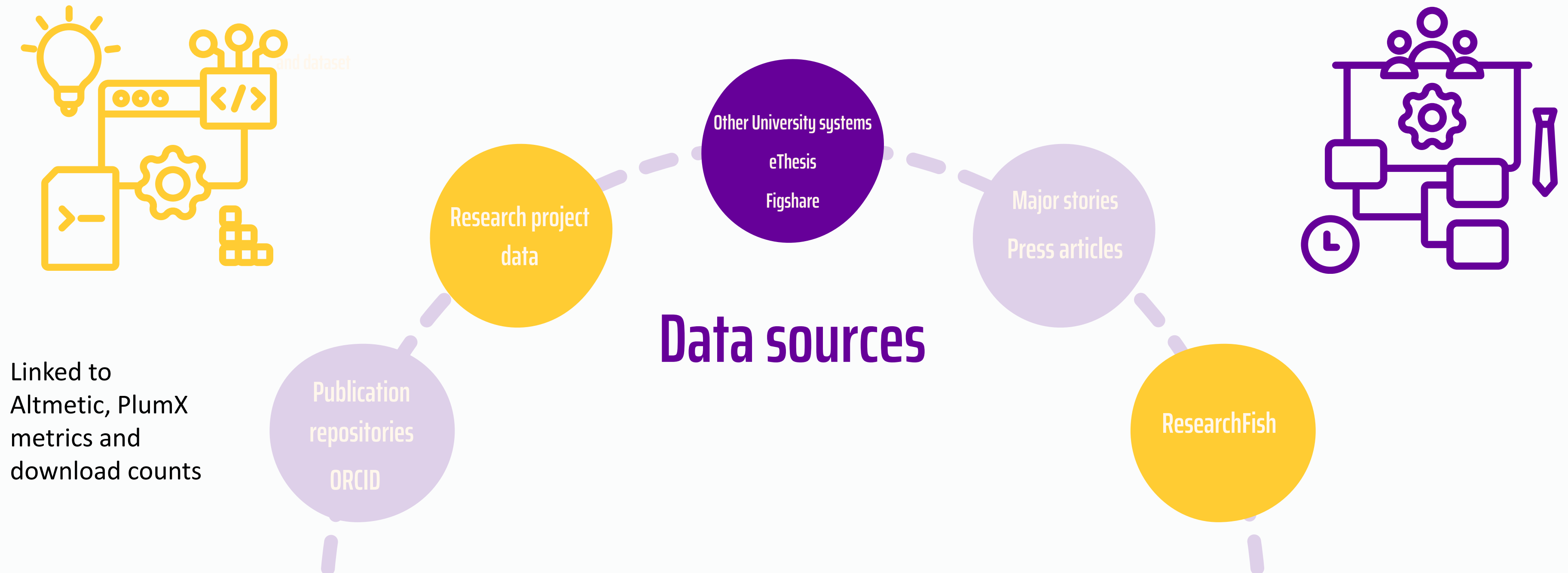
Digital Futures Institute for Data Science and AI Advanced Materials in Medicine

Christabel Pankhurst Institute Manchester Institute of Biotechnology

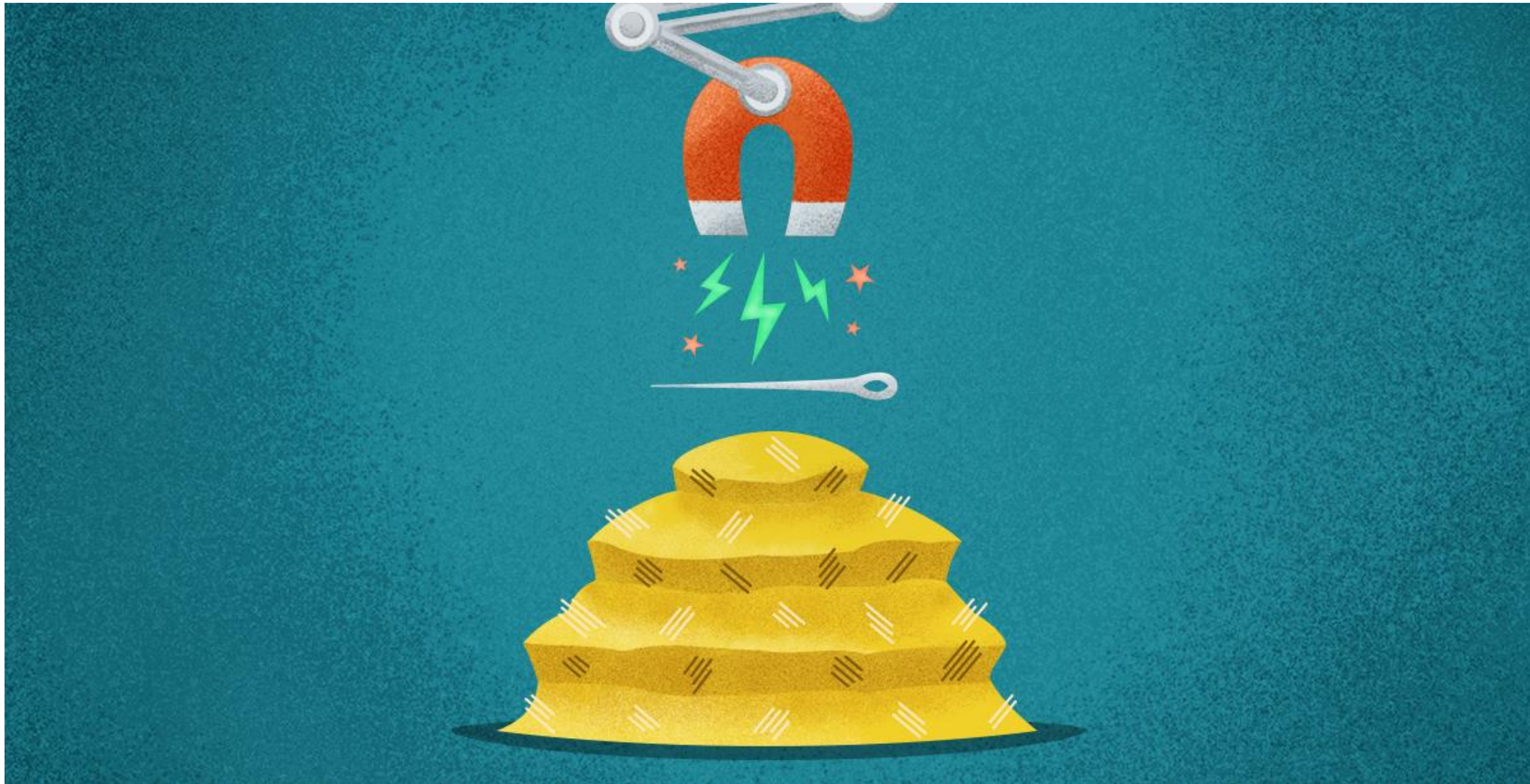
HOW WE KEEP IT UP TO DATE

Research Explorer is only as good as the data that's entered in Pure.

We keep data up to date in a number of ways, with an emphasis on re-using and integrating data wherever possible.



So, how do we find the needle?



TYPES OF SEARCH



Matching text



Does what it says on the tin!

Finds matching text across all content.

There's also advanced search options to further refine your search



Concepts ("Fingerprints")

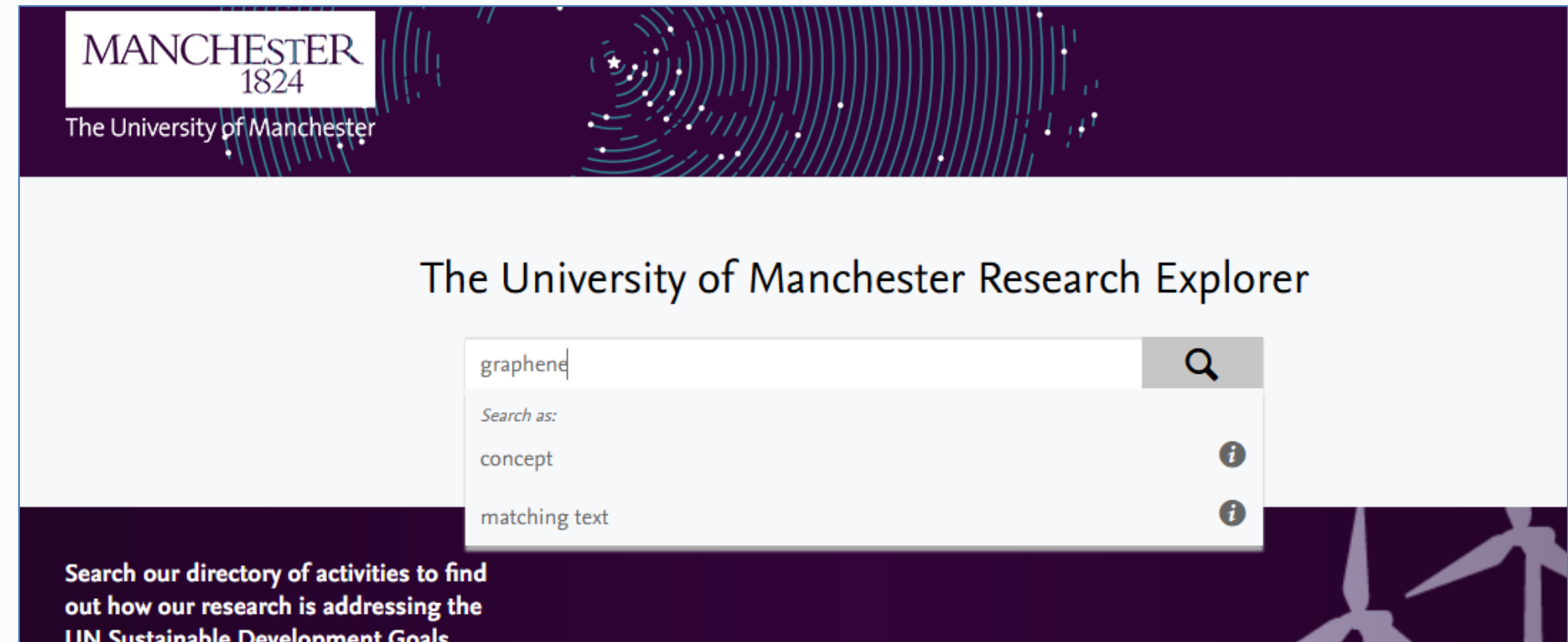


500,000 concepts, across 10 discipline thesauri, continuously updated

Consider abbreviations in how you search e.g. AI versus Artificial Intelligence

Updates automatically each week

Stress versus stress



Find content...

With all words:



With the exact phrase:



With at least one of the words:



Without the words:



TYPES OF SEARCH



Expertise finder



Paste an abstract, funding announcement, any text

Research Explorer will look for fingerprints and then match against UoM academics

You can filter by one or more fingerprint and thesauri and see where that concept is mentioned e.g. in a publication

Advanced search

Copy/paste text – find expertise

Copy/paste text – find expertise

Search for Profiles based on the Fingerprint produced from your text.

Helical assemblies of organic dyes are ubiquitous chiral organic materials, with valuable properties including chiroptical switching due to the dynamic nature of supramolecular chirality. Herein, we report a novel chiral bis-perylene diimide macrocycle, which acts as a discrete molecular model for a chiral supramolecular assembly. Point chirality is installed through amino acid-derived imide groups which, upon macrocyclization, is translated into helical chirality in the perylene diimide dimer. In solution, the macrocycle's chiroptical properties are switchable, with both the sign (+/–) and amplitude (on/off) of the signal tuned using solvent and molecular recognition stimuli respectively. The chiral structure–property relationships identified from this macrocycle are important for the design of high fidelity supramolecular chiroptical switches.

Analyze text & identify concepts

Fingerprint created based on the analyzed text

The analyzed text matches profiles within the following research domains ranked by the highest percentage matching extracted concepts. You can switch research domain in order to show results with the highest percentage matching extracted concepts.

Research domain

Chemistry

Change research domain in order to show profile results with matching concepts within that domain.

Extracted concepts

Molecular Recognition ☐

Macrocycle ☒

Chirality ☐

Perylene ☐

Dimer ☐

Molecular Model ☐

Hide

Imide ☐

Change selected concepts in order to show results that matches one or multiple selections.

Profiles with matching concepts

Showing results based on the above selected research domain and extracted concepts.

Profiles with work in the past 5 years (16)

Profiles with work in the past 10 years (16)

Profiles with work in their entire portfolio (16)

David Leigh, FRS FRSE FRSC
Communications Conference Programme 2025
Acrobat Pro (32-bit) Chemistry Group - Sir Samuel Hall

Martin Schröder
Materials Chemistry - Professor in Chemistry
10 matches

Guillaume De Bo
Organic Chemistry Group - Professor of Organic Chemistry

☐ Switch to Experts Community search

TYPES OF SEARCH



Collaboration map



Search by country

Data based on publication co-authors and project collaborators

Data from the last 5 years



Similar profiles



Similarity of a person’s fingerprints

calculate a minimum of 6 similar profiles and a maximum of 12 similar profiles for each member of staff.

Collaborations and top research areas from the last five years

Click dots and donuts to bring up details or Select a country/territory from the list



Overview Fingerprint Network Research output (203) Activities (3) Impacts (2) ...

6 Similar Profiles

Similarity is based on overlapping concepts in the fingerprints, and shared work and organisational affiliations of Leon Aarons, BSc, MSc, PhD with the persons below:

Sort by Relevance Last Name



Aleksandra Galetin
Aleksandra.Galetin@manchester.ac.uk
Pharmacy - Professor
24 shared 2 shared



Kayode Ogungbenro
Kayode.Ogungbenro@manchester.ac.uk
Pharmacy - Senior Lecturer in Cancer Pharmacometrics
74 shared 1 shared



Amin Rostami-Hochaghan,
PharmD, PhD, FCP, FAAPS, FJSSX
Pharmacy - Professor of Systems Pharmacology
24 shared 1 shared



Hitesh Mistry
hitesh.mistry@manchester.ac.uk
Pharmacy - Senior Research Fellow
7 shared



Jill Barber, MA, PhD Cantab, MA, DPhil Oxon, MRSC CChem, LGM
Pharmacy - Reader
2 shared 1 shared



Costas Demonacos
Constantinos.Demonacos@manchester.ac.uk
Pharmacy - Senior Lecturer
2 shared

TOO MANY RESULTS? HOW TO FILTER



Content type



University beacons, institutes and platforms



OA status on publications



University faculties and schools



Year



Time period



Type



UN SDGs

UN Sustainable Development Goals

The 17 SDGs are the world's call to action on the most pressing challenges and opportunities facing humanity and the natural world, and we at The University of Manchester are playing a leading role in tackling them. Click on a goal to the right to explore how our researchers and their work are contributing towards achieving it.



Use cases

🔍 Expertise finder



- Who is working on a
- Who else is working on b
- What recent work have they published?

I'm working with a small team who are using Pure to try and quantify what we're doing on AI, quantum, telecoms, novel compute and engineering biology. That's a hard set of questions to answer but Pure is really helping them.

🔍 Information finder



- What have we published on x...
- What research projects do we have on y...
- How do I contact Prof Z... * interview feedback

We've had names put forward from mapping and suggested expertise then have looked up PURE to try and help categorise, sometimes looked at like people, looked at what awards people have got...

...We used PURE and Research Explorer to check if people are here, what department and research centres they are linked into and try and determine if they can be selected into a specific area



Takeaways



Check what information is there



Make the most of the data that is added for you.

Do you want to be contacted? Would someone know if they could contact you about x, y or z?

Is your email address listed?



Keep it up to date



If you have a profile, or support academic colleagues who have profiles, remember to periodically keep information up to date. It doesn't need to be everything.

If the information isn't there, it's harder for people to find you.

Research Explorer: the future?



Major upgrade in 2022



Overhaul of look and feel

Introduced lots of new features

Academic-led changes



Next upgrade...



Planned for the next few years

More customisable layouts for pages

Better support for multimedia

Universities beginning to upgrade

HELP AND SUPPORT

Pure help and guidance

Website – <https://www.staffnet.manchester.ac.uk/pure/>

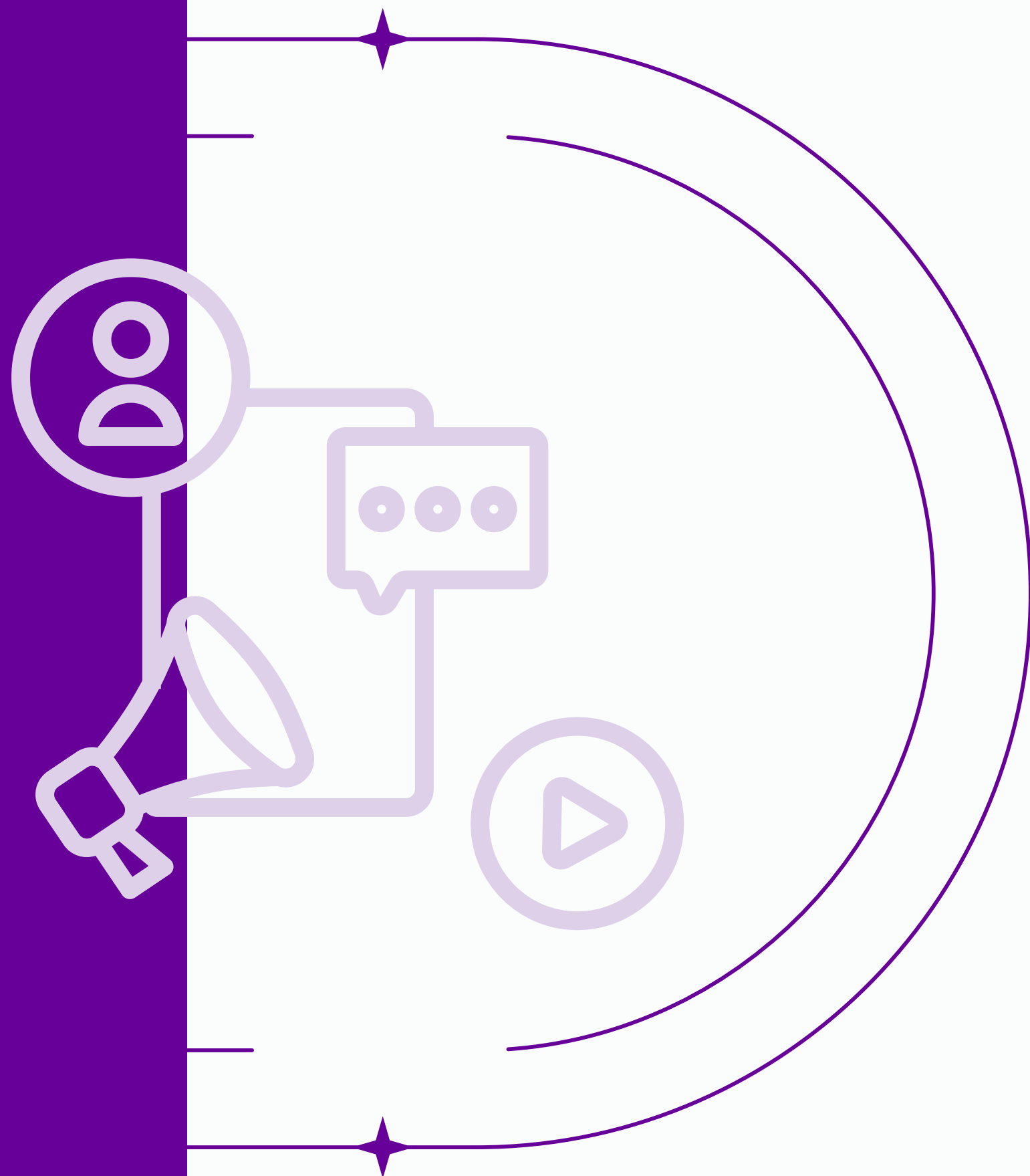
121 support -

<https://outlook.office365.com/book/UoMPSDTRSPureSupport@live.manchester.ac.uk/>

Email – pure@manchester.ac.uk

Further information on Fingerprints - <https://www.elsevier.com/eng/products/elsevier-fingerprint-engine>





RESEARCH COMMUNICATIONS CONFERENCE 2025

THANK YOU

ANY QUESTIONS?

