

# HELLO TOMORROW

Faculty of Science and Engineering

POSTGRADUATE RESEARCH

# Open Day Faculty Welcome



# TODAY'S PANEL



**Jez Lloyd**  
Marketing and Recruitment  
Officer (Host)



**Prof. Scott Heath**  
Associate Dean for  
Postgraduate Research and  
Early Careers Researchers



**James Lister**  
PGR Admissions and  
Recruitment Coordinator



**Omar Haroun**  
Postgraduate Researcher  
Materials



**Amirhossein Balali**  
Postgraduate Researcher  
Civil Engineering



**Georgie Stroud**  
Postgraduate Researcher  
Physics and Astronomy



**Lois Efe**  
Postgraduate Researcher  
Electrical and Electronic Engineering





# Prof. Scott Heath

Associate Dean for Postgraduate  
Research and Early Careers Researchers



**CHEMICAL  
ENGINEERING**

**CHEMISTRY**

**EARTH AND  
ENVIRONMENTAL  
SCIENCES**

**FACULTY OF  
SCIENCE AND  
ENGINEERING**

**MECHANICAL,  
AEROSPACE  
AND CIVIL  
ENGINEERING**

**SCHOOL OF  
NATURAL  
SCIENCES**

**SCHOOL OF  
ENGINEERING**

**PHYSICS AND  
ASTRONOMY**

**ELECTRICAL  
AND  
ELECTRONIC  
ENGINEERING**

**MATERIALS**

**COMPUTER  
SCIENCE**

**MATHEMATICS**

# THINGS TO CONSIDER

Which subject inspires you?

Which aspect of that subject are you so passionate about that you'd want to study it for the next 3 – 4 years?

Do you have your own idea for a project, or are you attracted by an available/example project?

Do you know someone who could, or would, supervise you?

How are you going to fund your research?



# HOW TO FIND A PROJECT

Search advertised  
research projects  
(on our website or  
Find a PhD)



Propose your  
own research  
project



# **CENTRES FOR DOCTORAL TRAINING (CDTs)**

## **What are they?**

**Four year  
integrated  
research  
degree**

**Opportunity to  
research with a  
cohort and  
collaborate  
with other  
institutions**

**Nationally  
recognised  
priority  
research  
areas**



# CENTRES FOR DOCTORAL TRAINING

**EPSRC Centre for  
Doctoral Training in  
SATURN (Skills and  
Training Underpinning a  
Renaissance in Nuclear)**



**UKRI AI Centre for  
Doctoral Training in  
Decision Making for  
Complex Systems**



**All CDTs currently recruiting for September 2025**

HENRY  
ROYCE  
INSTITUTE  
**EPSRC Centre for  
Doctoral Training  
Developing National  
Capability for  
Materials 4.0**

**EPSRC Centre for  
Doctoral Training in  
Robotics and AI for  
Net Zero**

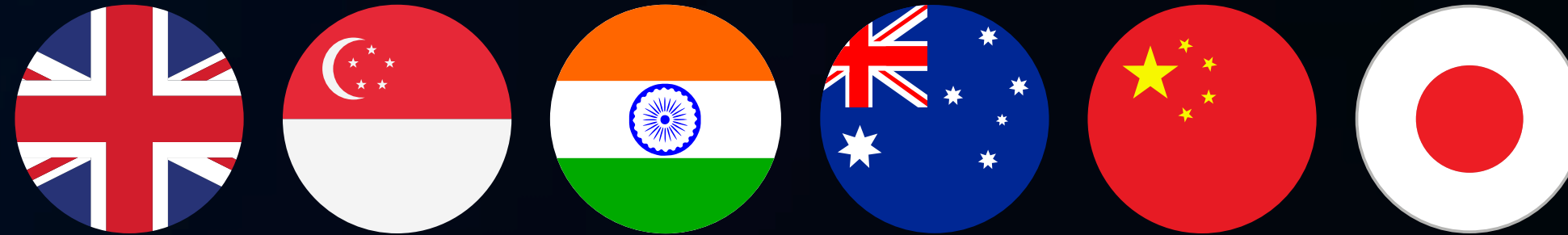


**EPSRC Centre for  
Doctoral Training in  
2D Materials for  
Tomorrow (2DMoT)**





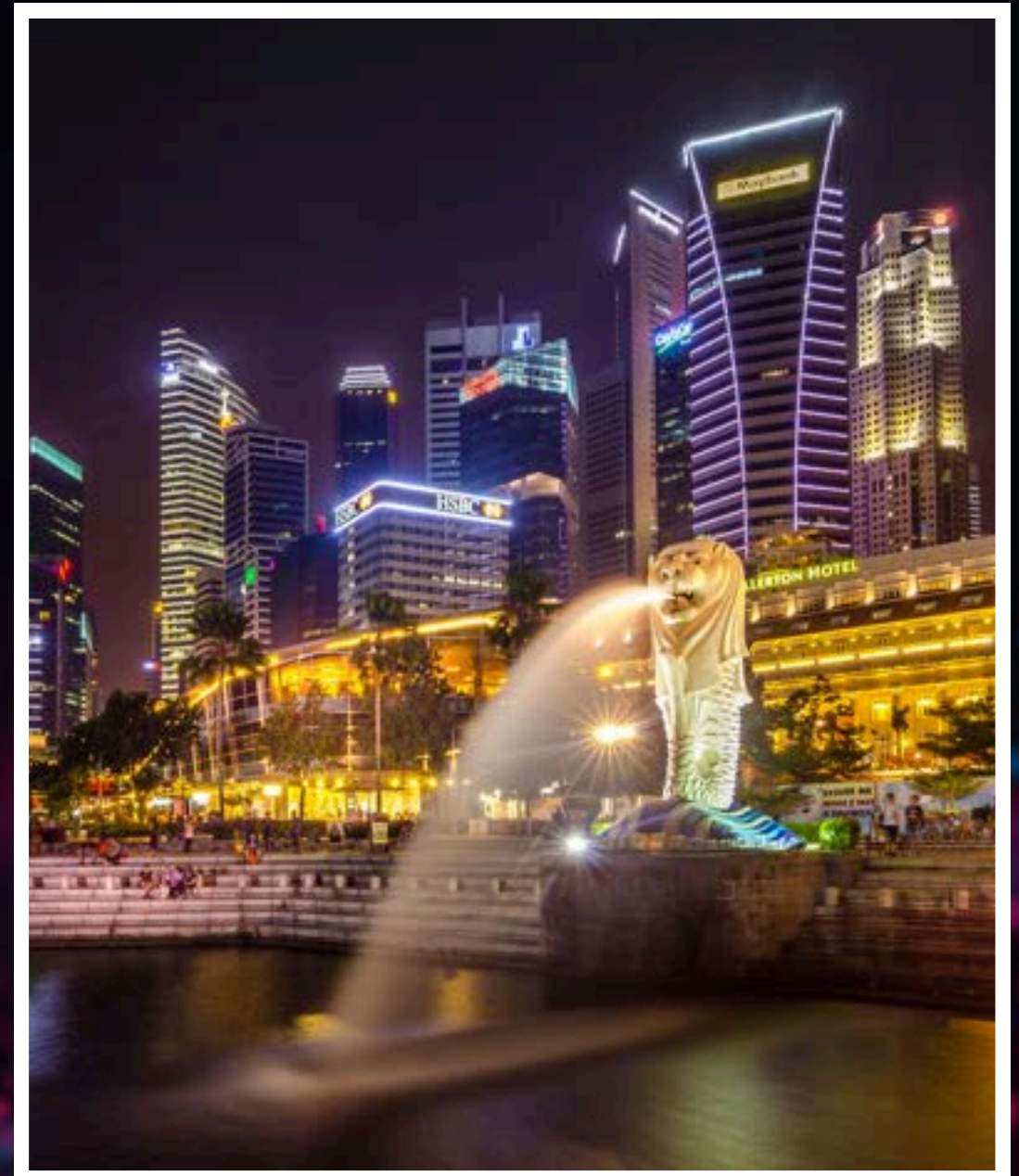
# COLLABORATIVE AWARDS



**Dual and joint-awards**

**Explore the world and carry out part of your research in a different country**

**Partner institutions include China's Tsinghua University, the University of Melbourne and Indian Institute of Technology, Kharagpur**





# FUNDING

## President's Scholarship



UK and  
international  
students



3.5 years fully  
funded inc.  
tuition at UK or  
int. rate



Enhanced  
maintenance  
stipend

## Dean's Scholarship



UK and  
international  
students



3.5 years fully  
funded inc.  
tuition at UK or  
int. rate



Annual  
maintenance  
stipend

## PGRTA Scholarship



UK/non-Visa  
students



Teach, study and  
learn, PhD  
scholarship with  
teaching contract



Fully funded inc.  
tuition



Min. combined  
teaching salary and  
stipend of £25,564  
/annum

## School of Natural Sciences Diversity Scholarships



Identify as  
black/black  
heritage, UK  
residents, eligible  
for home fees



3.5 years fully  
funded inc. tuition  
at UK or int. rate



Annual  
maintenance  
stipend



# IS THIS YOU?

**ON TRACK FOR A 2:1?**

**CURIOUS?**

**TENACIOUS?**

**STRONG COMMUNICATION SKILLS?**

**PROBLEM SOLVER?**

**DEMONSTRATEABLE  
RESEARCH POTENTIAL?**

**YES?**

**Whatever your gender, age, ethnicity or disability, your  
tomorrow could be postgraduate research!**





# ADMISSIONS

**James Lister**  
PGR Admissions Coordinator



# HOW TO APPLY

## 1) Choose your research area

The first step is to identify a project or research area that you're passionate about

## 2) Find a supervisor

Find an academic member of staff with relevant experience and contact them to discuss your research area

## 3) Find funding

Securing funding can be difficult. Make sure you can start your search as soon as possible. Your supervisor may be able to help

## 6) Interviews

All students will be considered for an interview (it is competitive for funded places)

## 5) Apply online

Include as much information as you can in the application, so that it can go quickly to the right supervisor or research group

## 4) Write supporting statement

Check the department's website for details of what you should include



# COMPLETING YOUR APPLICATION

**Ensure you name potential supervisor/s in your application**

**Choose your preferred supervisor carefully - if you are not applying for an advertised project use our research pages to find potential supervisors whose area of interest and expertise closely match your research topic**

**Ensure you upload all the required documents with your application to avoid delays in consideration of your application  
Watch out for emails requesting additional information!**

**Approach your referees to ensure they are expecting a reference request from us**

# APPLYING FOR FUNDING

Indicate that you wish to be considered for funding in the application form



Discuss funding opportunities with your proposed supervisor



Check application deadlines - varies depending on funding awards



Nomination and selection process varies depending on funding source - most funded scholarships will involve panel interviews





# WHAT HAPPENS NEXT?

## 1) Initial assessment

Initial assessment carried out by the Admissions Team

## 2) Academic consideration

Complete applications referred for academic consideration

## 3) Interview

Interview with potential supervisor and independent internal interviewer

## 6) Offers

Details of the offer are agreed by the potential supervisor/s and Senior Reviewer.

## 5) Funding interviews

Shortlisted candidates are invited to an interview with an independent funding panel.

## 4) Funding nomination

Academic supervisor can nominate candidates for Faculty or Departmental funding.

# GOT A QUESTION?

**Drop us an email**  
**[fse.doctoralacademy.admissions@manchester.ac.uk](mailto:fse.doctoralacademy.admissions@manchester.ac.uk)**



# MEET OUR POSTGRADUATE RESEARCHERS



**Georgina Stroud**

Postgraduate Researcher  
Physics and Astronomy



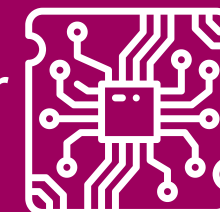
**Amirhossein Balali**

Postgraduate Researcher  
Civil Engineering



**Lois Efe**

Postgraduate Researcher  
Electrical and Electronic  
Engineering



**Omar Haroun**

Postgraduate Researcher  
Materials





# THANK YOU