

Understanding encounters, practices, values, and imaginaries of Hollywood Park, Edgeley

Dr Jenna C. Ashton

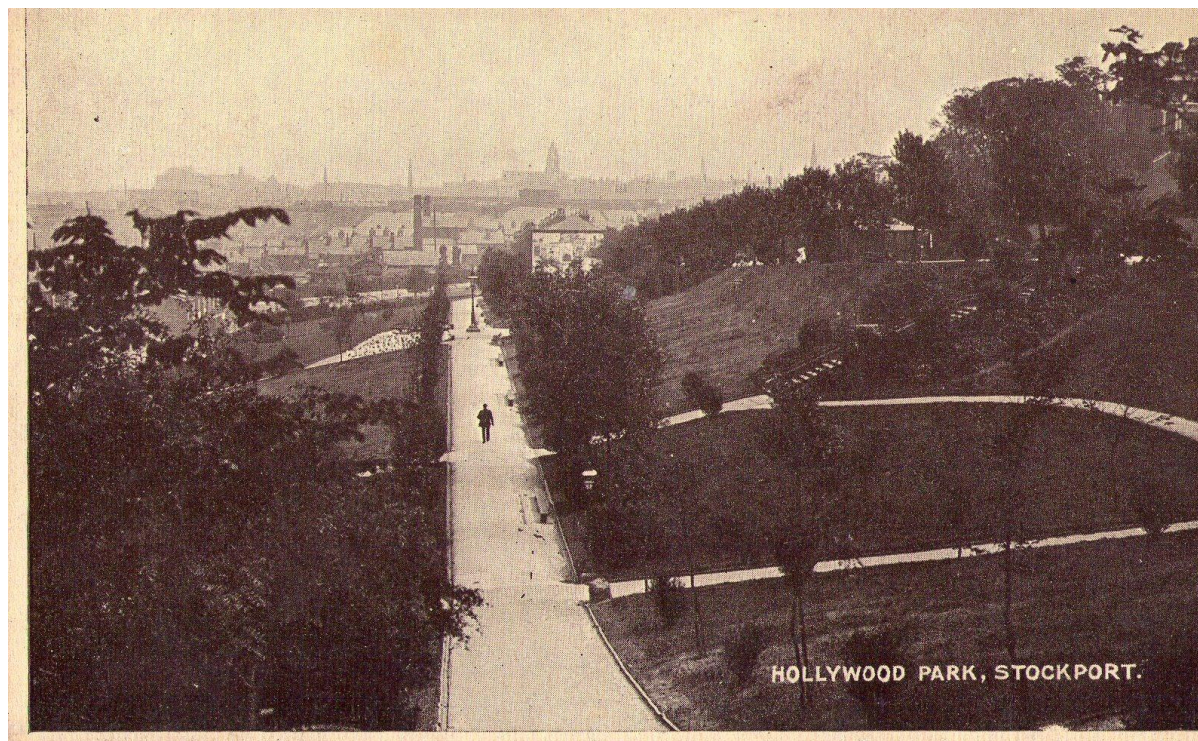
Dr Amy Barron

Matthew Bridson

Stockport MDC

Focus of the pilot is to research the encounters, practices, and perceptions associated with Hollywood Park, Edgeley (Stockport), towards a better understanding of its current role and meaning, and future potential, as a community asset for residents.

Increased knowledge and insight into Hollywood Park will support Stockport MDC and Stockport Council in its integration of the Park into investment plans, supporting resident stewardship and use, and activating ecological and design interventions.









This pilot research supports Stockport MDCs broader aims to

- Integrate new models of practice and research into regeneration strategizing and delivery.
- Develop case studies to support alternative co-design and investment approaches.
- Incorporate the needs, practices, and interests of new and existing communities into regeneration delivery.

In doing so, this project will

- Develop a case study on Hollywood Park to support next steps for supporting engagement, interpretation, and access needs.
- Produce an analysis of place-making and social resilience opportunities for existing and new residents, shaped by insights from Hollywood Park.
- Provide recommendations for further research needs (developed in collaboration with Stockport MDC).
- The Hollywood Park case study will be used in teaching for UoM socio-cultural geography and heritage studies programmes.

Frameworks from critical heritage studies, community development, and socio-cultural geography shape the methodology approach.

Literature Review

Archival Analysis

Local Authority Stakeholder Interviews

Dialogic Practice

Creative Ethnography

Application of “**ecomuseum**” theory as model for Edgeley.

Learning so far ...

- Role researchers can play in facilitating new connections, relationships.
- Uplifting existing research and local knowledge.
- Acting as critical friend to local authority in urban development.
- Value of local authority members carving out time to reflect on practice and approaches.
- Knowing how deep to go in response to community context.
- Learning when to step back/sideways to support.