

'IS POSTGRADUATE RESEARCH FOR YOU?'

2 OCTOBER 2024



TODAY'S PANEL



CHRISTIAN WARD

Host; Marketing and
Recruitment Officer



DAVID BECHTOLD

Associate Dean for
Postgraduate Research



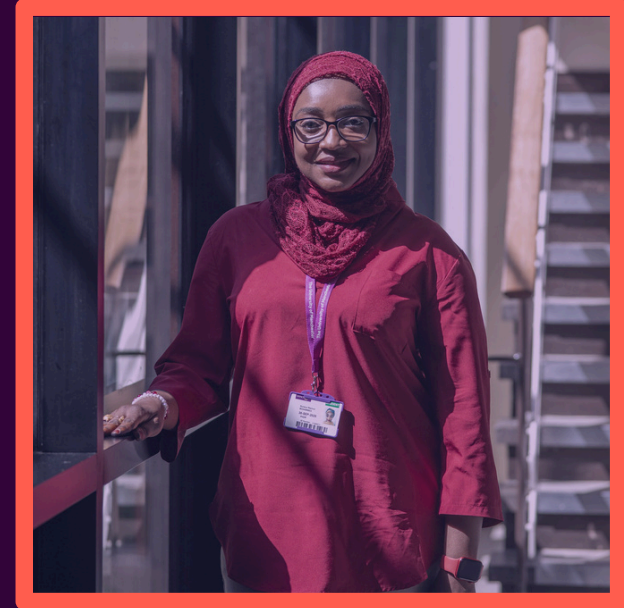
KIRSTY EATON

Recruitment and
Admissions Officer



LISHAN HUANG

Postgraduate Researcher;
Division of Nursing,
Midwifery and Social Work



SURAIYA MOHAMMED

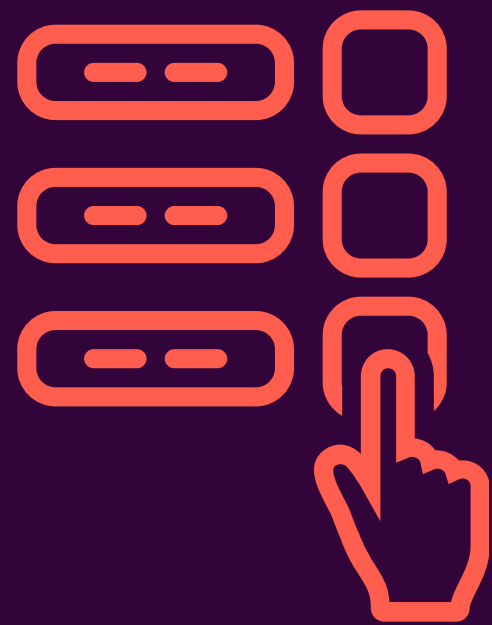
Postgraduate Researcher;
Division of Population
Health, Health Services
Research and Primary
Care

Q&A

GOT A QUESTION FOR OUR PANEL?
ADD IT TO THE Q&A CHAT



POLL



WHAT STAGE OF THE PGR JOURNEY ARE YOU AT?

LET US KNOW VIA THE POLL



WHAT IS POSTGRADUATE RESEARCH?

Independent, original investigation contributing new knowledge to a specific field.

Become an expert in a very specific area of biology, medicine or health.

One large self-driven project aiming to make novel contribution to field.

Helps you gain wide range of valuable professional and transferable skills

PhD is the most common type of postgraduate research degree

3-4 years full-time / 6-8 years part-time



PGR VS UNDERGRADUATE VS MASTER'S

	Undergraduate	Master's	Postgraduate Research
Aim	Provides broad foundation of knowledge, and introduces key concepts and theories.	Advances knowledge and specialises skills in specific area to deepen understanding.	Independent, original research contributing new knowledge to field. Creating knowledge rather than learning.
Duration (FT)	3-4 years	1-2 years	3-4 years
Style	Timetabled with lectures, seminars and assessments throughout week	More self-directed with a mix of lectures, seminars, projects	Self-directed, independent research under guidance of a supervisor, structured classes rare, 9-5
Assessment	Exams, essays, assignments, group projects	Coursework, projects, exams and dissertation	Assessed based on the submission of a thesis and viva voce (oral defence of thesis)
Supervision	Guided learning with high level of support from lecturers and tutors	More independent learning with support and supervision	Highly independent, guidance provided by supervisor(s)
Career Opportunities	Entry level roles, positions in specific industries	Potentially more specialised or managerial roles in industry.	Research-based roles in academia, industry, government or leadership positions in specialised areas.

TYPES OF POSTGRADUATE RESEARCH

PhD (Doctor of Philosophy)

- A three- to four-year degree of supervised research which offers an original contribution to a specialist subject.

MPhil (Master of Philosophy)

- A one to two-year degree centred around an independent research project which can serve as a pathway to a PhD.

MD (Doctor of Medicine)

- A one-year to two-year degree for qualified medical professionals, which will provide an original contribution and improve understanding of medicine.

ClinPsyD (Doctor of Clinical Psychology)

- A three-year programme of academic and clinical training for clinical psychologists.

DForenPsy (Doctor of Clinical Psychology)

- A three-year degree for qualified and registered forensic psychologists.

MB-PhD (Doctor of Medicine-Doctor of Philosophy)

- 7-8 year dual doctorate degree combining medical training with research and will provide an original contribution and improve understanding of medicine.

Integrated PhD

- A one-year master's which leads to a three-year PhD of supervised research in a specialist subject.

PhD with Teaching Certificate

- A four-year PhD degree with an integrated Postgraduate Certificate in Medical and Health Education.



ENTRY REQUIREMENTS



Academic entry requirements

- Upper Second class degree (or international equivalent)
- OR
- Lower Second class degree (or international equivalent) if you have:
 - A Master's merit or distinction
 - Considerable previous research experience



English language requirements

- Minimum IELTS score of 6.5-7.0 overall
- Each component of the English test: a minimum 5.5 (IELTS) in all components, TOEFL (iBT 22);
- Writing component: a minimum of 6.0 (IELTS)

SKILLS AND CHARACTERISTICS

- **Curious:**
 - Constant desire to learn more
- **Passionate:**
 - Strong opinions and beliefs on your area of research
- **Tenacious:**
 - Determination to complete tasks, however complex or long they take
- **Strong communication skills:**
 - Ability to speak, listen, observe, empathise with others effectively
- **Problem solver:**
 - Love to resolve issues with critical thinking and analytical skills
- **Demonstrable research potential:**
 - May have had work published, undertaken research or completed an extended project like a dissertation



IS PGR FOR YOU?



POSTGRADUATE RESEARCH IS FOR YOU

- Fascinated by an area of your subject
- Prepared to spend several years researching that one specific area
- Driven to push boundaries
- Interested in a career in research, academia or industry related to your subject



POSTGRADUATE RESEARCH ISN'T FOR YOU:

- Putting off choosing a career direction
- Unsure what to do next
- Just want to get another qualification
- Don't have a passion for research or a specific area

WHY MANCHESTER?

QS World University Rankings, 2025



34th
in the world



10th
in Europe

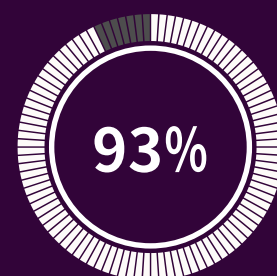


6th
in the UK



23rd
most international
university in the world

*Times Higher Education,
2024*



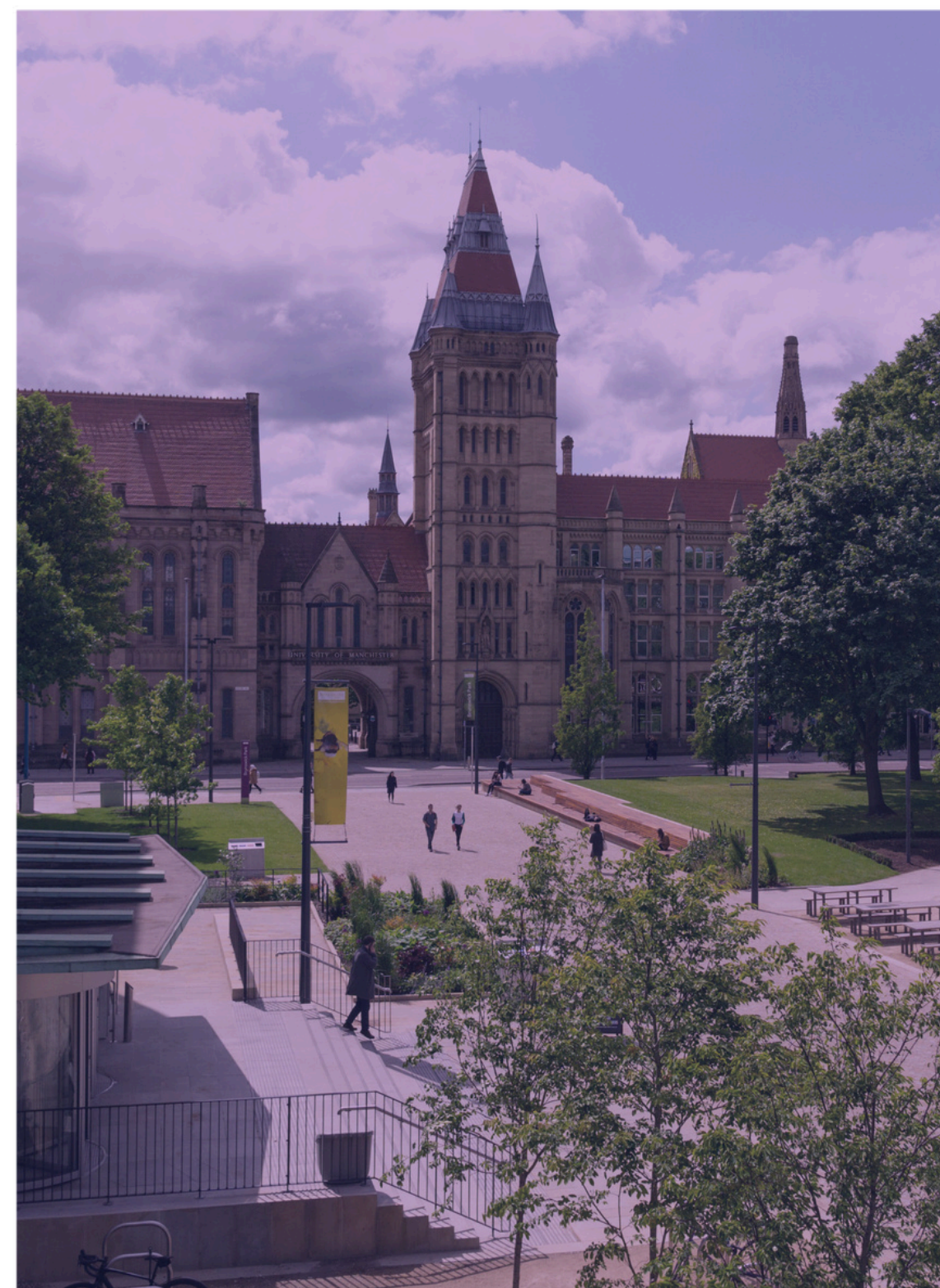
93%
of our research activity
is 'world-leading' (4*) or
'internationally excellent'
(3*)

*Research Impact
Framework, 2021*



2nd
in the world for action
towards the UN
Sustainable
Development Goals

*Times Higher Education
University Impact
Rankings, 2024*



WHY BIOLOGY, MEDICINE AND HEALTH AT MANCHESTER?



Interdisciplinary research across 12 areas working to develop innovative solutions to the world's biggest challenges .



World class research facilities; inc. Manchester Cancer Research Centre, Christabel Pankhurst Institute, AV Hill, Core Technology Facility and more.



Home to more than 800 academics, supervisors and research staff undertaking leading research in their field



Clinical and lab based industry links; the NHS, Cancer Research UK, the Alzheimer's Society, research councils and more



Partnerships with institutions and organisations across the world helping us make a real difference to global health



Thriving research community of more than 1000 researchers across the Faculty



Dedicated support throughout your PhD journey through our Doctoral Academy



MEET OUR POSTGRADUATE RESEARCHERS



LISHAN HUANG

Division of Nursing, Midwifery and
Social Work



SURAIYA MOHAMMED

Division of Population Health,
Health Services Research and
Primary Care

LISHAN: MY JOURNEY TO POSTGRADUATE RESEARCH

- During my master's degree, I got to know a friend who was studying for a PhD
- During my clinical work, I discovered my research interest, so I decided to pursue a PhD. In addition, the doctoral degree can also help me have more choices on the job
- Researching healthy ageing and aiming to help older adults live healthier and happier.
- Chose the University of Manchester as it has a good reputation and is well known for healthy ageing research.
- Aiming to become a researcher in future



LISHAN'S MOTIVATIONS

- Subject interest
- Self-motivation
- Salary
- Future plan
- Potential supervisor



SURAIYA: MY JOURNEY TO POSTGRADUATE RESEARCH

- Studied undergraduate at Ahmadu Bello University Zaria, Nigeria and master's at Texas A&M University, Texas, USA then went into industry.
- Exposure to Nigeria's oil and gas industry revealed significant research opportunities.
- What you're researching: Respiratory Protection Programs
- Chose Manchester due to reputation as part of Russell Group and cultural diversity of the university and city.
- Aiming to work as a consultant in industry in future.



SURAIYA'S MOTIVATIONS

- **Passion for research**
- **Impact of my research**
- **Having the right support**
- **Funding**
- **Long-term career goal**



PANEL Q&A

GOT A QUESTION FOR OUR PANEL?
ADD IT TO THE Q&A CHAT



NEXT STEPS

BROWSE AVAILABLE PROJECTS

 uom.link/bmh-pgr-webinar-projects



FIND OUT MORE AND APPLY

 uom.link/bmh-pgr-webinar-more



CHECK YOUR INBOX

 You'll receive a post-event email with a recording of today's session and the slides.

SIGN-UP TO OUR MAILING LIST

 uom.link/bmh-pgr-webinar-mailinglist



FUNDED STUDENTSHIPS AND SCHOLARSHIPS



Funding launches from 7 October:

Medical Research Council
Doctoral Training Partnership

Excellence in Diversity PhD Scholarships

Plus more to be launched in October and November:

Bicentenary PhD Studentships

President's Doctoral Scholar Award

And more...

 uom.link/bmh-pgr-webinar-funded

UPCOMING EVENTS

'WHERE TO START WHEN CONSIDERING POSTGRADUATE RESEARCH'

16 OCT 24

**1PM - 2PM
(GMT)**

'UNDERSTANDING PGR FUNDING IN BIOLOGY, MEDICINE AND HEALTH'

30 OCT 24

**1PM - 2PM
(GMT)**

'THE IMPORTANCE OF CONTACTING A SUPERVISOR'

27 NOV 24

**1PM - 2PM
(GMT)**

'THE PGR APPLICANT JOURNEY FOR INTERNATIONAL STUDENTS'

11 DEC 24

**1PM - 2PM
(GMT)**

'PREPARING FOR A PGR INTERVIEW'

8 JAN 25

**1PM - 2PM
(GMT)**

'PHD LIFE IN THE FACULTY OF BIOLOGY, MEDICINE AND HEALTH'

22 JAN 25

**1PM - 2PM
(GMT)**

BOOK YOUR PLACE [UOM.LINK/BMH-PGR-WEBINAR-BOOK](https://uom.link/bmh-pgr-webinar-book)



THANK YOU FOR JOINING US!

**LET US KNOW YOUR FEEDBACK VIA
OUR POST-EVENT SURVEY**

[UOM.LINK/BMH-PGR-SURVEY](https://uom.link/bmh-pgr-survey)

