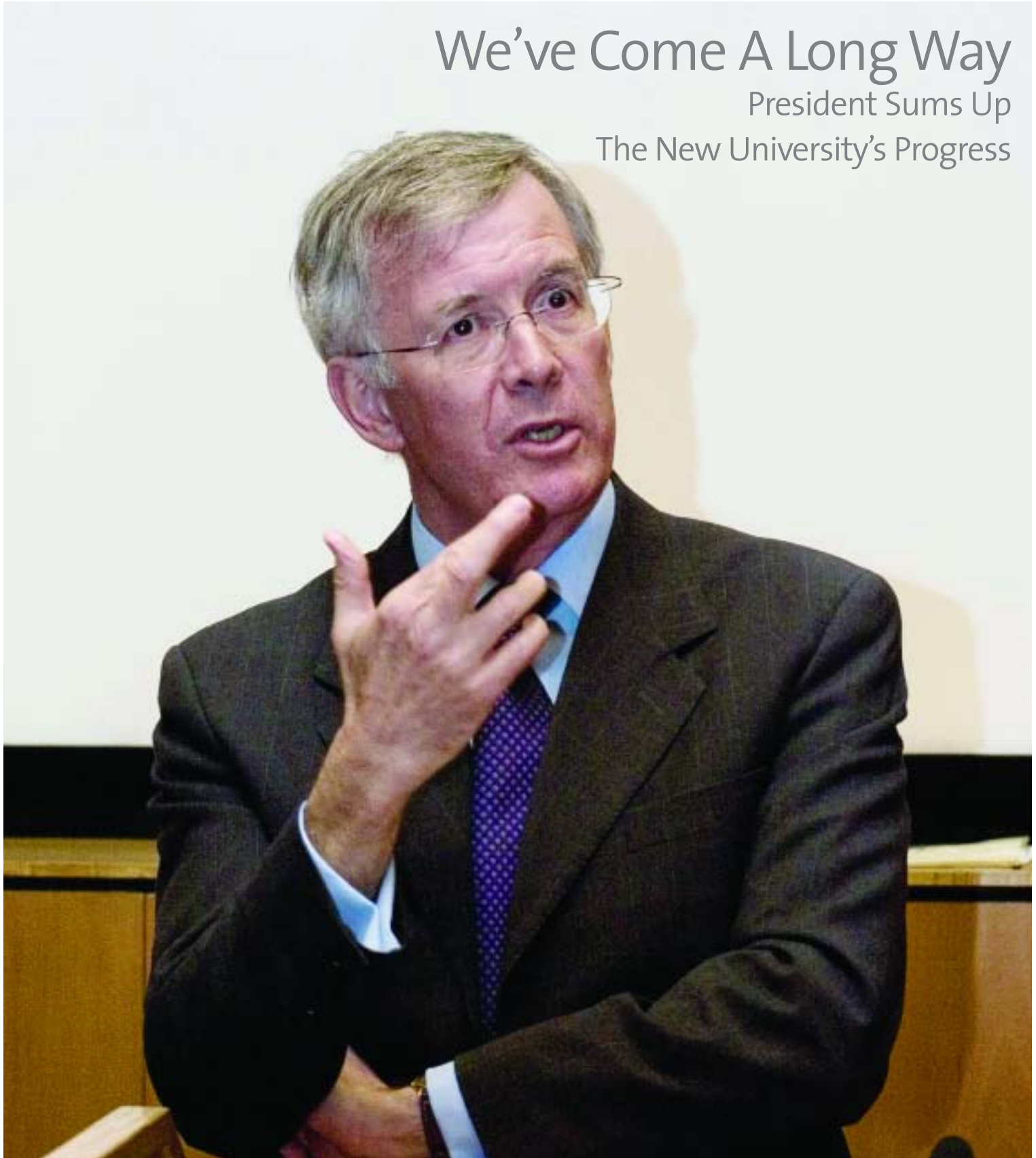


UniLife

6th June 2005

Volume 2 Issue 14

We've Come A Long Way President Sums Up The New University's Progress



NewsDigest

Contents

- 3** Creating a New Kind of University
- 4** News
- 11** Research
- 12** Devolution of the Administration
- 14** The Research Agenda
- 15** Your Good Health
- 16** Profile
- 18** People
- 19** Students
- 20** Community
- 22** What's On
- 24** Seminars/Noticeboard
- 26** Classified Ads
- 28** Just the Job

*Front cover:
President and Vice-Chancellor
Professor Alan Gilbert
Photo by Ed Swinden*

A summary of the key news in this issue of UniLife:



3

The University's President and Vice-Chancellor Professor Alan Gilbert has given a series of open meetings for staff across Faculties and Directorates, to discuss his impressions of the new University's progress and answer attendees' questions.



5

The University is launching a venture competition in the next academic year which will provide an opportunity for both staff and students to test their ideas' potential as business opportunities.



8

The School of Physics and Astronomy is staging a re-enactment of a lecture by Albert Einstein given at the University in June 1921, with actor Michael Roberts playing the part of the great man.



11

The National Drug Evidence Centre (NDEC) has been awarded over £2m by the Home Office for a study into the outcomes of treatment and care for drug misusers - the largest research grant to be awarded in the field in the UK.



12

The University is to re-structure a number of areas of its Administration following a review of the quality, effectiveness and efficiency of the administrative arrangements adopted when the new University was established last October.



14

Vice-President for Research Professor Nancy Rothwell gives an update on the University's research priorities and goals.

Creating a New Kind of University



'We've come a long way – but there is still a lot to do.' That was the message delivered by the University's President and Vice-Chancellor Professor Alan Gilbert at a series of open meetings held with staff recently.

More than 500 members of staff from across all the Faculties and the Central Administration attended the sessions with Professor Gilbert, where he gave his impressions on the progress that the University has made since its launch in October 2004.

Professor Gilbert took the opportunity to thank all staff for their hard work over the past seven months and acknowledged that while many aspects of the new University had exceeded all expectations, some operational matters and business processes were proving more difficult to bed-down.

But he had some words of warning for anyone thinking of giving up on the ambitious plans outlined for the University in the Manchester 2015 Agenda. "The past 50 years have seen the academic profession in the UK suffer a slow decline in many ways that matter deeply – a decline in the influence of the academic profession in public life, a decline in academic and academic-related salaries against all major comparator groups, a process of always being asked to do more for less, inexorable pressures on academic workloads and, underlying it all, a slow, damaging decline in the unit-of-resource available to invest in teaching, learning, research and scholarship.

"The 2015 Agenda", the President said, "is about reversing that slow decline – refusing to accept it – and creating a new kind of University that seeks out new sources of support and finance and new ways of doing things."

Professor Gilbert praised the continuing quality of student support and teaching

and learning. "Evidence shows that the upheaval of the merger has not had a significant effect on the experience of students," he said. "I think this is perhaps the greatest of all our achievements so far."

He also singled out the quality of research going on across the University. "Research is an area which has continued well and in some areas has accelerated and been close to best practice." (see feature on page 14)

The profile and reputation of the new University across the world was also very high. From his recent conversations with other Vice-Chancellors from in England and abroad, Professor Gilbert observed: "Other universities perceive that Manchester is managing to pull away from the competition, and that we have a unique opportunity to create a new kind of university here in the UK."

But he cautioned against any complacency, saying: "There needs to be substance behind our reputation and aspirations. The truth is that some things are proving more difficult than anticipated. We haven't got things right the first time, but we have the chance to put things right and make a real success of this University" (see article on Restructuring the Devolved Administration on pages 12 and 13). He stressed the importance of creating ambitious new ways of doing things – not just adopting the old processes of the two legacy institutions.

Each meeting also featured a lively question and answer session where staff were also able to express their thoughts and concerns. A number of themes came

up at several sessions, including the plan to recruit Nobel Laureates contained in the Manchester 2015 Agenda.

When asked whether it wouldn't be better to invest money in research currently going on at the University, the President argued that we must do both: "The target to recruit five Nobel Laureates to the staff by 2015 is just one of more than 35 Key Performance Indicators (KPIs) in the Manchester 2015 Agenda. Other KPIs talk about investing in staff already here and attracting young world-class researchers. The whole purpose of iconic appointments is to help to change the perception of the University, attract funding we would not otherwise get and wonderful early-career researchers who would otherwise tend to go elsewhere."

The President was also asked to outline how he saw teaching and learning developing at the University. "We need to think about what students will be demanding over the next ten years," he said. "We have to become more adept at online learning. In ten years time, ageing academics relying on 'chalk and talk', or Powerpoint, will at best be curiosities from a lost world."

Professor Gilbert also answered questions and heard comments from staff about a whole host of other issues, including plans for new buildings, the job evaluation process, sustainability, the website, IT support and student fees. He promised to take on board the points that he had heard and report back to staff at future meetings and through the pages of UniLife.

News



Christopher Kohler (left) presents the collection to Library Director Bill Simpson

The Kohler Collection of Manuscripts and Printed Material includes several leaves of a draft of Gissing's novel *Verandila* (published posthumously in 1904), as well as unpublished family letters.

The Collection was presented to the Director of the Library Bill Simpson by Christopher Kohler on 9 May. Of particular interest are the three volumes of *Virgil* which Gissing was awarded in 1874 as a prize for Latin when he was a student at Owens College, a forerunner of The University of Manchester.

John Rylands Library Secures George Gissing

An important collection of material relating to the novelist George Gissing (1857-1903) has been acquired by the John Rylands University Library, thanks to an award of £97,700 from the Heritage Lottery Fund.

Wakefield-born Gissing attended Owens College from 1872 to 1876 where he distinguished himself by winning a series of prizes and distinctions. He was caught stealing a small amount of money from the coat pockets of his fellow students to help a prostitute, 'Nell' Harrison who he later married, and was expelled and sentenced to a month's hard labour by magistrates.

He later became the author of more than 20 novels (the most famous of which is *New Grub Street*), a number of shorter

stories and one of the first critical studies of Dickens, first published in 1898.

The Library already holds a substantial collection of material relating to Gissing, including examples of his magazine writing, a number of first editions and a range of biographical, bibliographical and critical material. The addition of the Kohler collection, assembled over more than 30 years, provides an extended insight into a key figure in Victorian culture and outstanding alumnus of Owens College.

Election Special

The BBC's election bus pulled up at the University on 6 May, for a post-election special.

There were live broadcasts from the University all day, including an interview with Dr Ed Fieldhouse, Director of the Cathie Marsh Centre for Census and Survey Research. Dr Fieldhouse talked about the next Conservative Party leader and the election result in general, in an interview which appeared live on BBC News 24 and later on the 1 o'clock and 6 o'clock news programmes.

Dr Fieldhouse was one of a number of academics from the University who commented on election issues during the run up to the big day, with media coverage including the *Financial Times*, *Manchester Evening News*, *Radios 4 and 5 Live*, *GMR* and *Radio Lithuania*!

Could You Be A Pension Scheme Trustee?

The University of Manchester Superannuation Scheme (UMSS) is looking for a new Trustee to represent secretarial and clerical staff.

If you are currently working at the University on a secretarial or clerical pay grade and have been a UMSS member for at least three years, then you are eligible to stand as a Trustee. You will also need to be supported by 20 UMSS members in secretarial or clerical roles.

So what does a pension scheme Trustee actually do? Well, they are responsible for the management of the pension scheme and work alongside professional advisers.

There are nine Trustees in total, five of which are chosen by the University and four chosen by members. Trustees have to be prepared to attend four meetings a year and commit the time to read papers and carry out any training required to carry out the role.

In the event that more than one person puts themselves forward, an election will take place to select the Trustee.

Also look out for posters appearing across campus soon advertising the Trustee position for technical staff.

If you're interested in finding out more, contact the Pensions Office before 24 June on 275 2043.

News

Venture Competition

The University is launching a venture competition in the next academic year which will provide an opportunity for both staff and students to test their ideas' potential as business opportunities.

There will be two distinct aspects to the competition; Venture Out and Venture Further.

Venture Out is an ideas competition for individuals or teams and will run in the first semester. Entrants will complete a short entry form and be supported by events and workshops during the semester. The best ideas could win cash prizes of £1000.

Venture Further is a business enterprise competition, again for individuals or teams, that will be launched in the second semester. Once more there will be events

to support entrants, and the top prize of £25 000 (including cash and in-kind support) will be awarded to the business enterprise judged to have the greatest chance of success.

There is no restriction on team size but at least 50% of the team must be currently-registered students at the University.

This is a great opportunity to turn business ideas into reality and learn more about the processes of new venture creation. More information is available on the University's website at the address below.

www.manchester.ac.uk/venturecompetition

venture>out
venture>further



Wildabout Manchester

The Manchester Museum recently hosted the launch of Wildabout Manchester, Manchester City Council's new Biodiversity Strategy.

Guests were welcomed by Professor John Handley, Professor of Land Restoration and Management at the University, and wildlife expert Chris Packham talked about the importance of sustaining nature in urban environments.

The launch kicked off the city's five-year action plan to conserve, protect and enhance its biodiversity, making sure Manchester's flora and fauna species continue for future generations to enjoy.

Henry McGhie, Principal Curator of Natural Science at The Manchester Museum said: "The Manchester Museum and The University of Manchester welcome the opportunity to contribute to the conservation of the local environment, and the improvement of the quality of life of the people of Manchester."

Building on the success of the launch the Museum is holding a 'World Environment Day' on Saturday 4 June. For more information, please contact 275 2648.



Chris Packham and friend

News

Manchester Business School (MBS) has moved up the world rankings according to a report published recently by the Financial Times.

MBS is ranked 31st in the world for customised executive education programmes – a move upwards of 11 places compared to last year's survey when it was rated 43rd in the world.

The Financial Times Executive Education survey looks at non-degree programmes, including those which are specially designed for particular organisations. The survey measures client satisfaction, the proportion of international clients and the diversity of teaching.

Professor Paul Sparrow, Academic Director of Executive Education at Manchester Business School said: "We

Moving On Up

have jumped 11 places in a year and come 5th in the UK for executive education – that places us above most of our major competitors in this country."

Professor John Arnold, Director of Manchester Business School added: "Executive education is an important market for us, enabling our academics to share their leading edge research with the business community, supporting business people to put the latest ideas into practice. It's good to see that our clients feel our input has made a difference to their operations."

In a separate move, Manchester Business School has just launched a new series of

scholarships for postgraduate students. The Unity Celebration Scholarships have been set up to celebrate the creation of The University of Manchester and will be available to all applicants from within the UK and the EU and can cover up to 100 per cent of programme fees.

The bursaries are available to students on all of the School's specialist masters programmes and the deadline for applications is 30 June 2005.

The scholarships have been set up to celebrate the creation of The University of Manchester. For more information visit:

 www.mbs.ac.uk

World Universities Network Strengthens Research

A conference of the World Universities Network (WUN) in early May arranged by the Universities of Manchester and Oslo drew together 35 European academics, to consider global health, HIV-AIDS, poverty and development.

Speakers included Professor David Hulme, Director of the University's Chronic Poverty Research Centre, who spoke about the nature of chronic poverty and the complex web of researched solutions.

Afternoon workshops resulted in a series of suggestions for further WUN activity, on themes including globalisation and the production of poverty, research quality and its impact, higher education research involvement and innovative methods of poverty analysis. On day two of the conference the University's Anthony Bebbington, Sam Hickey and Maia Green presented papers on the

dynamics of poverty and development in Africa and Latin America.

The next meeting of this group will be in the autumn in Manchester, and WUN will be helping to organise further seminars and workshops on poverty over the next two years. A repository for key case materials and course notes is also to be added to the WUN website, and made accessible to researchers in the developing world.

For more information please contact Dee Gilmore-Stewart on 275 8261 or dee.gilmore-stewart@manchester.ac.uk

 www.wun.ac.uk <http://idpm.man.ac.uk/cprc/>

News

Nobel Laureate Conducts Super Lecture

Nobel Prize winning physicist Ivar Giaever (right) delivered an exclusive lecture at The University of Manchester in May.

The pioneer of solid-state physics gave a lecture on 'The Discovery of Superconducting Tunneling' – the breakthrough for which he was jointly awarded the 1973 Nobel Prize in Physics.

Giaever was one of the first scientists to produce superconductor devices which allowed microscopic objects to travel through completely solid walls. His discovery paved the way for significant advances in MRI scanning and the

development of new types of transport such as Japan's 'MagLev' train which uses superconducting magnets to float above railway tracks.

Leading University of Manchester physicist Professor Andre Geim, said: "Professor Giaever was one of the first to demonstrate tunneling in an experiment and helped to bring the strange world of quantum mechanics a step closer to the realm of practical applications."



Professor John Perkins, Vice-President and Dean of the University's Faculty of Engineering and Physical Sciences, said: "Professor Giaever's contribution to the fields of superconductivity and tunneling have paved the way for some of the most significant advances in modern physics today. The University of Manchester was honoured to have hosted this lecture."

One Size Fits All?



The Faculty of Humanities' multidisciplinary conference 'One Size Fits All? Contemporary Challenges of Integration and Fragmentation' will be held in the Humanities Lime Grove building on 16 and 17 June.

The two-day conference has been organised by a team of postgraduate research students from across the Faculty, and will include presentations from postgraduate students, professionals and academics from around the UK.

The conference theme has been chosen to encourage a broad cross-pollination of ideas, with panels on Communication and the Arts, Social Institutions, Business, Marginal Identities,

Technology and Knowledge. The organisers aim to create an environment in which the question 'one size fits all?' can be explored from any disciplinary perspective.

The keynote speaker on the 16th will be Chairman of the Manchester Business School Incubator Rod Sellers OBE, drawing on his 30 years' business knowledge and experience to discuss integration and fragmentation in the

commercial world. On the 17th, Professor of Sociology Les Back will discuss fragmented experiences in a globalised world where time and space are compressed, with particular reference to immigration, nationality and asylum seekers' experience in Britain.

The conference is free and refreshments will be available. For further information and to book your place please visit the website below.

www.humanities.manchester.ac.uk/conferences/integration/

News



Professor Pervez Ghauri of Manchester Business School has been made an honorary Doctor of Economics by the Turku School of Economics and Business Administration in Finland.

International Business Honours

The award was conferred on 13 May in recognition of Professor Ghauri's services to the field of international business through many high-calibre publications, as well as to acknowledge his long-standing commitment to the dissemination of international business knowledge through his role as founding editor of the journal *International Business Review*.

Professor Ghauri (pictured left) said: "It is such an honour to receive this award, especially from this distinguished business school which I have enjoyed close links with in the past. My visit has opened up a range of new collaborative opportunities, including joint research projects and the exchange of PhD candidates, which I am looking forward to following-up."

Professor Ghauri's International Business Research Centre recently hosted a guest seminar by world-renowned academic Professor Arie Lewin from Duke University in the United States, which asked, 'In the age of globalisation, why are so few multinational firms global?'

Professor Lewin suggested several directions for future research on the globalisation of the firm, stating that academics need to explore the conditions under which firms become global, develop knowledge about the differences between successful and unsuccessful global firms and go extend the current focus on North American multinationals.



2005 is officially Einstein Year and a series of events are taking place around the UK to celebrate the 100 year anniversary of the work of the great man.

Einstein Recreated

The School of Physics and Astronomy is playing its part by staging a re-enactment of a lecture which Einstein gave at the University back in June 1921. This was the first time Einstein had ever given a lecture on British soil.

The lecture will take place in the same venue as 1921 – the Whitworth Hall - and actor Michael Roberts will be playing the part of Einstein. He will be giving the lecture – this time in English – and will join the audience afterwards to answer questions.

The event has been organised by Professor Robin Marshall who said: "The idea came to me in a flash and I'm really thrilled by the response. So far around 300 people have asked for tickets but I'm

hoping that the Whitworth Hall will be full. What has surprised me is that people from all areas across the University have asked for tickets – not just colleagues in Physics."

Professor Marshall is pictured left with a blackboard on which Albert Einstein signed his name during his visit to the University in 1921.

The re-enactment is taking place on Monday 13 June at 5pm in the Whitworth Hall. Admission is free and is open to everyone within the University. For tickets and further information contact Professor Robin Marshall at robin.marshall@manchester.ac.uk

News

Catwalk Cash for Christie's

Manchester's textiles students have helped to raise £2,500 for the Christie Hospital by hitting the catwalk.



Students from the Fashion and Textile Retailing course donned the latest designer gear to take part in three fashion shows held at the University in May.

All three shows went under the name of Fashion Fusion. Course tutor Delia

Vazquez, said: "Our textiles students put on a magnificent end of year show. Their attention to detail was truly outstanding, they kept adapting and improving their work and learned how to work effectively in teams under pressure, I am very proud of them all!"



Students showcased their interpretations of this summer's hottest trends from high-street stores like Mango, New Look, Miss Selfridge, Warehouse and Ted Baker. Outfits varied from classy ball gowns to fluorescent swimsuits and clubwear.

All proceeds from the event will be donated to the Alex Hall Memorial Fund, which was established in memory of Christie patient Alex Hall who died after losing her long fight against cancer in 2003. The students chose Christie's - and in particular the Alex Hall Memorial Fund - as their tutor Delia Vazquez was Alex's sister in law.

Combining Skills

Students in Combined Studies have been brushing up on their fundraising skills with a project to raise the profile of an anti-bullying campaign by The Phoenix, a Bolton charity offering performance art workshops to young people.

To raise the initiative's profile the five students held a fundraising gala dinner, selling tickets and auctioning off celebrity

items. Their enthusiasm and powers of persuasion led to items being donated by U2, Robbie Williams, Graham Norton, Peter Kay, Cherie Blair and the 1966 World Cup squad, to name a few.

The group raised around £1000 for the charity by auctioning the booty, which included books, signed photos, sheet music, concert tickets and a dress

from Mrs Blair. The final figure is yet to be confirmed.

Natalie Junejo, one of the students involved, commented: "Initially we were sceptical about what we would be able to achieve, but people were relying on us. We certainly realised how difficult it is to raise funds, but would do it all again in a flash!"

News

The Right Chemistry

More than 60 youngsters from schools across the North West will be coming to the University this week to take part in the Salters' Festival of Chemistry.

The students will be taking part in a range of hands on practical chemistry activities including a 'University Challenge' – a task devised by the University's School of Chemistry.

The event will end with a fun lecture by Dr Steve Faulkner which will involve light, colour, fire and explosions. Finally a Prizegiving will see the winning teams receive cash for their schools and certificates.

The Salters' Festivals of Chemistry are an initiative of The Salters' Institute, whose aim is to promote the appreciation of chemistry and related sciences among the young. This event at the University is being sponsored by British Nuclear Fuels plc.



Weight Watchers

The six-week Weight Watchers at Work programme organised by the Directorate of Sport has been such a success that participants have asked for it to continue indefinitely.

34 women and 2 men have taken part in the sessions, held at lunchtime in the Well-being Room. Each includes a weigh-in and short meeting, where everyone is encouraged to keep shedding the pounds and share weight-loss and recipe ideas.

In total the group has lost an impressive 21 stone 3lb during the six-week programme - a tremendous achievement in such a short space of time. Participant Barbara Allcock, a Building Superintendent in the Stopford Building, said: "I've been on diets on and off throughout my adult life and this has been just fabulous.

"The course has provided us all with a network of support. Half the class is from the Stopford Building and so if one of us finds a good recipe we share it, or if someone is having a bad day we can support each other." In total Barbara has lost over 11.5 lbs.

Participants can choose from two diets; the 'no count plan' which allows dieters to eat any food items from an approved list, or the 'points plan' which allows participants to eat anything up to a daily points allowance.

Building Attendant Tommy Cantillon, who has shed a whopping 17lbs, said: "The best thing about the course is that you can fit it into your working day. I shall definitely be carrying on with it."

The Weight Watchers at Work scheme will continue on a pay-as-you-go basis each Friday from the middle of May. Sessions cost £4.95 and include a weigh-in at 11.45am-12.15pm and a meeting at 12.20 – 12.40pm. Please contact Gail Heathcote-Milner to find out more, or simply drop in to the Well-being Room on the day.



Helping Hands Across the University

Staff and students from the Institute for Development Policy and Management (IDPM), the Centre for Census and Survey Research (CCSR) and the Geography and Government departments are working together to raise funds for a small community in Uganda.

The group has been organising fundraising activities across the campus since February to support KIDADE, a Ugandan non-government organisation working to combat poverty in the country. They have held events including a Jenga and wine evening, book sale and horse-racing night, and have already raised more than £950.

The first item to be bought will be a motorcycle, requested by KIDADE as one of its priorities. This will help members to get around the district and help coffee farmers achieve better prices for their crops, as poor roads in the region often prevent them from getting their produce to market.

Lesley Harris from the School of Environment and Development commented: "I used to work as a volunteer with KIDADE, so I have some first-hand experience of the work they are doing to fight poverty in their community. It seemed a natural progression to set up a fundraising group at the University, and having staff and

students from across different Schools involved shows just how people are willing to pull together for a good cause.

"We are always looking for new students and staff to join, and they can also benefit by learning new skills such as proposal-writing for fundraising applications."

The next event will be a collection at the Owen's Park 'Bop' arranged with the kind permission of Fallowfield Campus Manager Mike Aspden. For further information on joining the group, or to find out details of their events, please contact Lesley on 275 2798.

Research

Parkinson's Disease Sufferers Affected by Movement

Doctors Ellen Poliakoff and Karen Lander and Research Associate Adam Galpin of the School of Psychological Sciences are investigating the link between Parkinson's sufferers' movements and stimuli in the world around them.

It is known that that seeing someone else move, or an object associated with movement like a door handle, triggers the 'movement areas' of the observer's brain - even though they are not moving themselves. The project will investigate how Parkinson's disease affects this process, and whether sufferers respond more strongly than other people to movement triggers in their environment.

Catching sight of a doorway for example can cause a Parkinson's patient to 'freeze' uncontrollably, while the stripes on a zebra crossing can ease the process of walking across a road. The team also hopes to

discover why external stimuli can be both beneficial and detrimental to movement in this way, depending on the context.

The team will be comparing the performance of patients with Parkinson's disease and healthy older adults. They are looking for participants aged 50 to 70 who have been clinically diagnosed as having idiopathic Parkinson's disease, as well as healthy individuals of the same age.

Volunteers will be asked to participate in up to five testing sessions of one to two hours over the next two to three years. Sessions can be held at the University or

the volunteer's own home, and all travel expenses will be reimbursed.

They will be asked to look at video clips and pictures and make judgments about them whilst their reaction times and eye movements are measured, as well as to complete questionnaires. Even those who can only participate in one or two sessions will be contributing very valuably to the study.

Anyone interested in volunteering should contact Pip Brown on 275 7348 or pip.brown@manchester.ac.uk any Monday, Tuesday or Wednesday morning.

Major Award for Drug Treatment Research



The National Drug Evidence Centre (NDEC) within the Division of Epidemiology and Health Sciences has been awarded more than £2m, to carry out a study of clinical, criminal and wider social outcomes related to treatment and care for problem drug users.

The Drug Treatment Outcomes Research Study (DTORS) is funded by the Home Office over an initial two and a half year period, and is the largest research grant to be awarded in the field of drug misuse in the UK.

The award is the result of a lengthy competitive tender process from a consortium from the University and NatCen, the National Centre for Social Research. Head of NDEC Dr Mike Donmall will be the project's Principle Investigator and the Centre's Andrew Jones its Co-ordinator, supported by a diverse Manchester-based team.

Dr Donmall said: "This is a most exciting opportunity to undertake research of direct policy importance in this area of great social concern. Drug misuse continues to pervade our communities, damaging young lives and affecting us all through others' criminal activity and community safety concerns.

"There has been a huge investment in treatment for drug misusers in recent years, and an emphasis on diverting drug-using offenders from the criminal justice system. Significant annual increases in the number of users brought

into contact with treatment suggest an acute need to evaluate whether it is actually doing any good."

The project will follow 3000 drug-users from across the country over an initial 12 month period, to see how treatment affects their drug and alcohol use, offending behaviour, physical and mental health issues and wider social outcomes. The cost-benefits of treatment will also be investigated, as well as how well 'coercive' criminal justice routes into treatment work with clients who may not be strongly motivated to change their behaviour.

Feature

Devolution of the Administration

The University is to re-structure a number of areas in its Administration following a review of the quality, effectiveness and efficiency of the administrative arrangements adopted when the new University was established on 1 October 2004. As in any new organisation, some fine-tuning was to be expected after several months of practical experience.

The changes have been designed to secure real improvements in the quality and cost effectiveness of administrative services, largely by devolving more staff and resources from the Centre to Faculties. The aim is to take a further significant step towards the exemplary administrative practices promised in the Manchester 2015 Agenda.

A relatively small number of staff will be directly affected by the changes, but those who are affected are being asked to adjust to new roles, reporting relationships, working environments, or, in some cases, all three. The University regrets the necessity for any further dislocation, recognising that the merger has already required administrative staff to tolerate major changes since the beginning of Project Unity. It is therefore worth stressing that no further re-structuring is envisaged for the foreseeable future, giving the University a prolonged period in which to consolidate its new structures.

The University's current commitment to the policy of no compulsory redundancies will, of course, be maintained in relation to this re-organisation.

The new structures are the result of a major Review of the Devolved Administration conducted by the President and Vice-Chancellor and the University's five main budget holders (Registrar and Secretary and the four Vice-Presidents and Deans).

Although in the long-term, the University wishes to reduce the proportion of its total budget spent on administration, this Review was not an exercise in "cost-cutting". Its purpose was to examine the effectiveness of current administrative arrangements and the balance of resources and administrative responsibilities between the Centre and Faculties/Schools.

The revised structure for the administration is based on the tripartite model of the University with substantial devolution of responsibility, authority, accountability and resources passing from the Centre to the four Faculties and 24 Schools.

The Review Group adopted a clear set of guiding principles to underpin its work which emphasised support for "academic excellence" as the key driver for the work of the administration, and in considering re-structuring options looked for solutions most likely to provide better services to academic teachers, researchers and students. The Group therefore recognised the importance, wherever possible, of devolving services to the point of maximum impact.

As a result of this Review, the number of central directorates is being reduced to five (Finance, Estates, Human Resources, STARS - Sport, Trading and Residential Services, and Planning and Academic Services), and a number of core services and functions for which these directorates are responsible will be further devolved for delivery within Faculties.

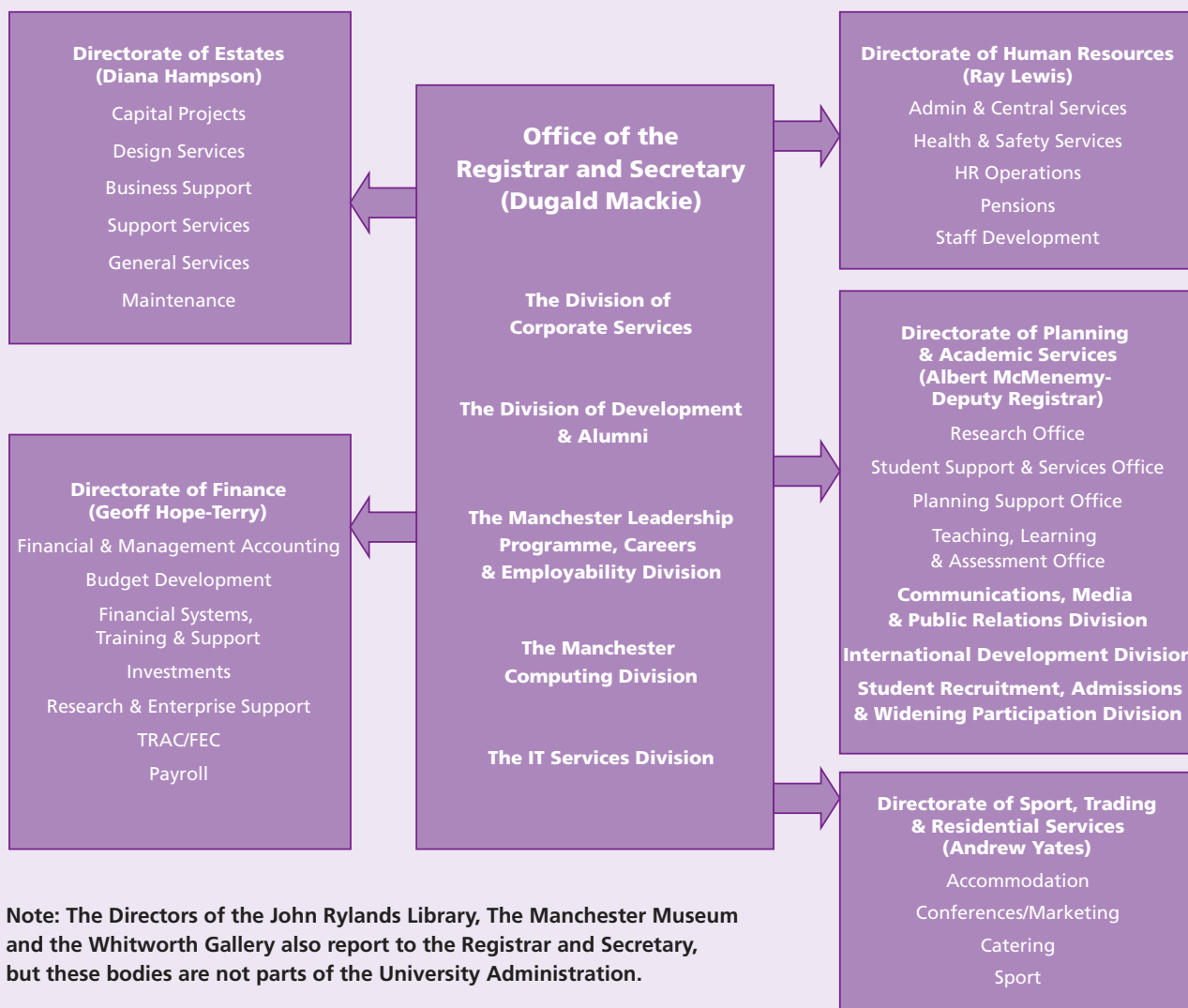
The Directorate of External Relations will be dissolved, and some of its functions devolved to Faculties. Responsibility for Student Recruitment and Communications activities will be transferred to the Planning and Academic Services Directorate. A new Administrative Division with responsibility for the Careers Service and the new Manchester Leadership Programme will report directly to the Registrar and Secretary. The political liaison and regional and business development functions will be discharged by Special Advisors working directly to the President and Vice-Chancellor and the policy Vice-Presidents and Faculties.

In the computing area, a new IT Services Division with a strong link to Faculties will be established to support academic and student users. The externally-focused functions associated with Research Support Systems, MIMAS and IFL will remain with Manchester Computing, which will become a separate Administrative Division.

A timetable and process has also been agreed by which each of the Faculties will review and report on the balance of further devolution between Faculties and Schools. These reviews will be conducted over the next couple of months and the restructuring will be finalised over the summer and in the autumn.

The full Report of the Review Group can be seen on the University website at www.manchester.ac.uk/devolution

Feature



Note: The Directors of the John Rylands Library, The Manchester Museum and the Whitworth Gallery also report to the Registrar and Secretary, but these bodies are not parts of the University Administration.

News

The Research Agenda

By Professor Nancy Rothwell, Vice-President for Research.

The University of Manchester aims to be one of the 25 strongest research universities in the world by 2015. As our strategic plan Towards Manchester 2015 clearly states, it is our research performance that will drive our reputation and standing at the highest international level.



In turn, excellence in research is the key to success in the University's other activities, allowing us to attract the best students and staff, produce the highest-calibre graduates, and contribute fully to regional, national and international economic development.

Research quality is commonly judged using measures including a university's grades in the national Research Assessment Exercise (RAE), its research funding level and the number of prestigious research prizes and fellowships won by its staff. Recognising this, Towards Manchester 2015 sets ambitious goals for research performance. We intend that at least 70% of our research will be of international quality by 2015, with substantial progress towards that target by the next RAE in 2008. We have introduced annual reviews of research performance, involving external assessors every fourth year, to help measure our progress towards our targets and identify support and development needs.

The University currently earns more than £160m of research funding each year, over £50m of which is won from the Higher Education Funding Council for England through our RAE performance. The rest is earned as grant and contract income from the UK's eight Research Councils (£50m), other Government departments (£15m), the EU (£8m), charities (£25m), industry (£7m) and other sources (£5m). To support our ambitions for international research excellence, we must increase our research income every year to a point where it is double the current levels by 2015.

Postgraduate research students and postdoctoral researchers make a major contribution to the University's research activities, and help sustain a vibrant and dynamic research environment. A large community of these researchers is another hallmark of the world's greatest universities, and they are also one of the main ways in which the University meets its obligations to train and develop the next generation of excellent researchers.

We intend to increase our numbers of postgraduate and postdoctoral researchers every year, again with the aim of doubling their number by 2015. This will necessitate careful attention to their training, supervision, support and development and also to improving the support mechanisms available to their academic supervisors. Not only do we wish to increase numbers, we must also ensure that our research students and postdoctoral staff have an experience of unrivalled quality at the University.

As an institution it is essential that we receive full and proper recognition for our research achievements. We aim to ensure that many more of our staff are appointed to prestigious fellowships of learned societies, including the Royal Society and the British Academy, and also need to gain recognition for our research successes in the form of top scientific and scholarly prizes and awards. Our ambition is to treble the recognition received through these measures by 2015.

The appointment of outstanding new research staff, including five Nobel Laureates by 2015, is a key aim, but it is

essential that this is accompanied by targeted support for existing 'research stars' and those with the potential to join their ranks. The performance and development review programmes being established across the University will play a central part in identifying and meeting support and development needs. It is also our aim that all less experienced members of academic staff be assigned mentors for research and teaching, and receive focused, appropriate training to support them in becoming established as excellent scholars.

Many areas of research are highly dependent on skilled support, and it is paramount that we recruit, retain and develop experienced technical staff to meet changing research needs. The University has also significantly developed, and will continue to enhance, its administrative support and management information services, to focus directly on supporting academic staff in their research.

The deliberately ambitious research targets we have set will not be easy to achieve. The level of performance they reflect is essential however, if we are to succeed in realising the University's vision. It is my firm view that excellence in research will drive excellence in everything else we do, and our early progress is already encouraging. I will continue to discuss the challenges and issues we are facing as widely as possible, and provide regular reports on our research achievements.

Feature

Your Good Health



meditation and Coping Better with Academic Pressures. A series of stress reduction days are also held at the Armitage Centre, featuring approaches from mindful meditation to pilates, tai chi and yoga. The next event for staff will be in the Autumn.

Campus Walks

For those of us reluctant or unable to take up more organised fitness training, a new series of walks around campus has just been launched. The walks form part of the Directorate of Sport's bid to encourage greater physical activity, in line with the Government's 10 000 steps a day campaign, as well as offering a chance for a breath of fresh air and to get to know the campus better at lunchtime.

Options include a walk from the Oxford Road to Sackville Street ends of campus as well as individual walks at each end, and leaflets will be available from the Directorate's offices in William Kay House from July. Pedometers will also be available for staff to buy for £4, to keep track of your progress towards those 10 000 steps!

The University Jogging Club

The jogging club meets on Tuesdays and Thursdays at 12.30pm at Manchester Sport Development Centre on Denmark Road. It is aimed at complete beginners wanting to lose weight or get fit, and offers measured routes of from one to four miles. Members are always accompanied around the course, and those who can't jog the whole route are encouraged to come along and walk.

Please contact Gail Heathcote-Milner on 55985 or gail.heathcote-milner@manchester.ac.uk to discuss any of the above activities.



The Directorate of Sport, working with Human Resources and the Counselling Service on several initiatives, offers a range of activities to encourage health and physical fitness amongst staff. Why not get set for summer by getting involved in one of these healthy pursuits?

Leagues and Tournaments

The Campus Sport programme runs leagues and tournaments throughout the year which are open to all staff and students. Anyone who can get a team together can enter, with options including 11- and 5-a-side football, netball, basketball, hockey, rugby union, squash and badminton. For more information please e-mail alice.watson@manchester.ac.uk.

Fitness Classes

Drop-in fitness classes include aerobics, Bums and Tums and Tai Bo at the Armitage Centre in Fallowfield, and aerobics, Stretch and Tone, circuit training, yoga and Body Conditioning at the Sugden Centre on Grosvenor Street.

Several courses are also being held over the summer. The Well-being Room in St. Peter's House will host free drop-in Mindful-based Stress Reduction classes at lunchtimes on Mondays and Thursdays, and pre-booked six-week courses on Alexander Technique (Wednesdays) and pilates (Thursdays) from 20 June. In room D45 of the Sackville Street Building, pilates classes will be held on Tuesdays

and Bums and Tums on Wednesday afternoons from 6 June.

Lunchtime classes are also held at 12.30pm each day in the UMSA room in the Refectory Building on Oxford Road. Staff can drop in for yoga on Mondays and Fridays, salsa on Tuesdays, pilates on Wednesdays and Egyptian dancing on Thursdays. The campus mini-bus stops right outside the building, and an Iyengar yoga class is also held in the Sackville Street Building on Thursdays at 12.30pm.

Enrolment Classes

The Armitage and Sugden Centres also offer short courses of classes including kick boxing, pilates, Street Combat, Cheerleading, Salsa, Jazz Dance, Ashtanga yoga and Egyptian dancing, with several starting-points during the year.

Mind and Body Classes

The Well-being Room hosts a range of courses and drop-in classes, including Tai Chi Qigong, Yang-style Tai Chi, Iyengar, Ashtanga and Hatha yoga, pilates, Stretch-Breath-Relax, assertiveness training, Alexander Technique, Stress Reduction through Yoga, mindful

Profile

Although Professor Laura Doan is a native of California, even studying for her first degree in her home town of San Diego, she became an anglophile at an early age when her Master's degree brought her to England for a term at Oxford.



Doan's Diversions

She was studying post-war British culture, from the architecture of Coventry Cathedral to Benjamin Britten's War Requiem, although her academic career was temporarily put on hold in favour of four years' work in a funky bookshop. At the time a new wave of artistic clientele, poetry readings and other creative events were diversifying American bookselling, long before the trend reached Britain.

Chicago's wide-ranging doctoral programme in cultural history beckoned next, with Laura producing a dissertation on the post-1945 reconstruction of the arts in this country from Francis Bacon to Barbara Pym. She then took up a position teaching Humanities at Stetson University in Florida, where both the alligators and the attitudes came as something of a culture shock but she was able to develop her interest in modernist and contemporary British culture.

In 1989 Laura began a twelve-year stint at the Geneseo campus of the State University of New York, where she was

made a Professor ten years ago. Soon afterwards she began the first of two separate years at Lancaster University's Institute for Women's Studies as a visiting Research Fellow, before moving to Manchester as Head of Women's and Gender studies.

"As a cultural historian, I study literature, visual culture, fashion, sexual science, and law, to demonstrate the importance of an interdisciplinary approach in exploring the sexual identities of the past," she explains. Her recent book on the origins of modern English lesbian culture has been recognised as a major contribution to the field and won two major US awards, and she is currently absorbed in a new study of how the history of sexuality is written.

Laura's highly interdisciplinary essay collection *The Lesbian Postmodern* has become a benchmark work for theorising the inter-relationships between feminism, gender theory, and postmodernist and queer theories, and more recently she co-organised the sell-out international

conference *Theorising Queer Visualities* on how queer manifests itself in visual culture. Much of her energy is currently going into the movement of the Centre for the Study of Sexuality and Culture which she co-established into English and American Studies within the School of Arts, Histories and Culture.

Laura is insistent on the intellectual rigour of her subject and delighted at the breaking-down of some of the barriers previously surrounding many of her research topics.

Recently unveiled archival material has facilitated her study of perceptions of First World War women ambulance drivers, and she has been given special permission by the Home Office to look at the papers surrounding the 1928 banning of Radclyffe Hall's sapphic novel *The Well of Loneliness*.

"They were originally to be kept from the public until 2040, although an official told me that they would have to be released soon anyway under the Freedom of

CV

Name

Professor Laura Doan

Position

Professor of Cultural History and Sexuality Studies

Co-Director Centre for the Study of Sexuality and Culture

Education

1969-1973 University of San Diego

1973-1975 San Francisco State University

1979-1983 University of Chicago

Career History:

1983-1995 Posts at Stetson University and the State University of New York

1995-2001 Full Professor of English, State University of New York

2002 - date Reader in Women's and Gender Studies
Professor of Cultural History and Sexuality Studies, The University of Manchester



Information Act," she confides. "But as I've now got a head start on other scholars I'm hoping they won't be in any great hurry about it!"

Having originally studied the history of music back in San Diego she remains an avid enthusiast, singing in the University chorus in her spare time. Also a great lover of both cinema and gardening, she feels equally at home in cosmopolitan Chorlton and the serene Lake District where she and her partner of thirty two years spend much of their time.

"When my American friends ask 'Why Manchester?' it's hard to know where to

start explaining the reasons," she says. "Quite apart from enjoying both the city and the surrounding countryside, Manchester and the University provide a really supportive atmosphere for my - sometimes provocative - work. Which is more than can be said for some of my experiences in the States.

"With the way the city has raised its status nationally and globally in recent years though, and the University's own academic and international ambitions, nowadays I'm likely to just ask them, 'Why not Manchester?'

People

Award Funds Preventive Dental Care Project for Cleft Lip and Palate Infants

Jeanette Mooney of the School of Dentistry has received a Colgate-Palmolive Professions Complementary to Dentistry Research Award from the Oral and Dental Research Trust. She was presented with the award, which carries a cash prize of £2500, at the Presidential Meeting of the BDA British Dental Conference in Glasgow on 19 May.



The prize has been granted to fund Jeanette's study into preventive dental care for cleft lip and/or palate (CLP) infants. One in 700 babies in the UK is born with a cleft lip and/or palate, and many parents experience difficulty when attempting to register their child with a local dentist.

The Royal College of Surgeons has recommended that dental health education should be available for CLP infants throughout childhood, with the Clinical Standards Advisory Group specifically proposing that preventive dental advice should be given to the parents of cleft children within their first year of life. Jeanette's project aims to introduce and

monitor the effectiveness of a preventive dental care programme for CLP infants aged 5-11 months in the North West.

Jeanette said, "I am thrilled to have received this award, especially as it is for the maximum amount available of £2500, which will be invaluable in supporting the costs of the study."

Peters Prize

The annual Peters Essay Prize, founded using a gift from Stella Peters in memory of her late husband Professor Emrys Lloyd Peters, has been awarded jointly to two competitors.

Professor Peters taught in the University of Manchester's Department of Social Anthropology between 1955 and 1984, and the eponymous prize is offered for the best essay on a topic within that field. The competition is open to any UK-based postgraduate student (or graduate within the last six months).

This year saw particularly strong competition for the Prize, and the judges eventually decided to make the award jointly to two entrants whose essays were considered outstanding for different reasons. Diana Espirito Santo of University College, London was commended for her essay 'Rethinking Cosmological Syncretism', and Olivia Swift of Goldsmiths College, London for 'The People's Puzzle'. Both winners will receive a cheque for £125.

Students

Postgraduate Development Workshop

The Faculty of Engineering and Physical Sciences' Graduate Development Scheme (GraDS) holds its final 'Developing the Postgraduate Manager' workshop from 21 to 23 June.

The workshops mix experiential tasks with intensive reviews of team and individual performance, based on the UK GRADschools (formerly Research Councils' Graduate Schools) model. This particular workshop tests the teamwork and project-planning skills of PhD students by challenging them to make their own digital film on postgraduate issues.

The previous session in April was attended by 39 graduate students from across the North West, and was acclaimed as a great success. Six teams of attendees produced short films on the theme 'Everything you always wanted to know about a PhD, but were afraid to ask', role-playing independent film company staff who must design, film and edit their



films before selling them to television commissioning editors.

There are still a few places available on the June workshop. For further details please visit the web address below, or contact Claire Gill at eps-grads@manchester.ac.uk to book a place.

www.manchester.ac.uk/eps/grads

Student Enterprise Awards



The University's seventh annual Student Enterprise Awards ceremony in May celebrated both the winners of the prestigious Student Team-working Awards, and student contributors to two voluntary peer support schemes.

Peer Mentoring, which began around ten years ago in the School of Chemistry and now involves over 30 disciplines and 1800 students, allows students to offer social and pastoral support to lower-year

colleagues; whilst Peer Assisted Study Schemes (PASS) help facilitate their learning experiences through the provision of academic support.

Around 200 students attended the evening, which was sponsored by PricewaterhouseCoopers. Certificates were presented for contributions to the schemes over the past year, as well as to mentors and PASS leaders who completed PWC's Personal Development and

Effectiveness Training course and students who completed the Personal Development for Successful Learning course (PDSL) run by Curriculum Development and Innovation in EPS and Humanities.

Representatives from Lund University in Sweden were also in attendance, after PASS leaders from Manchester met leaders from its Supplementary Instruction scheme during a collaborative conference at this University in March. The Manchester-Lund collaboration was cemented further when Students as Partners and Widening Participation staff visited Lund in April, to observe how the Supplementary Instruction scheme had been successfully implemented in Swedish schools, and further collaborative work is planned.

In the Student Team-working Awards, cash prizes were awarded to students in four categories whose applications demonstrated their team-working skills during their course or extra-curricular activities. The winners and runners up included a 'Science Idol' competition, a tactile map of the campus, a Mexican cultural evening and an ethical fashion show.

Community



Rewarding Volunteers

University students and staff who take part in voluntary work are being urged to enter the third Higher Education Active Community Fund (HEACF) Volunteering Awards scheme.

The awards aim to recognise and reward the commitment of those people who give up their time as volunteers on projects funded by or initiated by the HEACF.

This is the third year that the awards have been run by the Higher Education Funding Council for England (HEFCE) and the Careers Research and Advisory Centre (CRAC). Over the past two years 2,387 individuals have been nominated for an award across projects that have touched well over 44,800 people. Projects ranged

from running sports events and coaching for schools, to holding a fashion show to empower the homeless.

The closing date for entries is 26 October 2005 and the winners will be announced at a special ceremony in December. Winning student and staff entries receive £200 of vouchers, while winning project entries receive a bespoke trophy. Entry forms and guidance notes are available from the website below or by contacting Philippa Smith or Sonia Leong on 01233 488 511/541.

➤ www.heacf-awards.ac.uk



A project involving the Whitworth Art Gallery and a group of local school children has been recognised with a major award.

Imaginations Take Flight

The Gallery has received a 'Roots and Wings Award' which is given by an organisation called Curiosity and Imagination. The awards aim to celebrate projects which involve children with heritage of all kinds.

The project saw staff at the Gallery working with Year 2 pupils from St Philips RC Primary School and Didsbury CE Primary School. The children looked at the cultural and symbolic meanings of artefacts found in the museums' collections and used these as a starting point to produce short animated films.

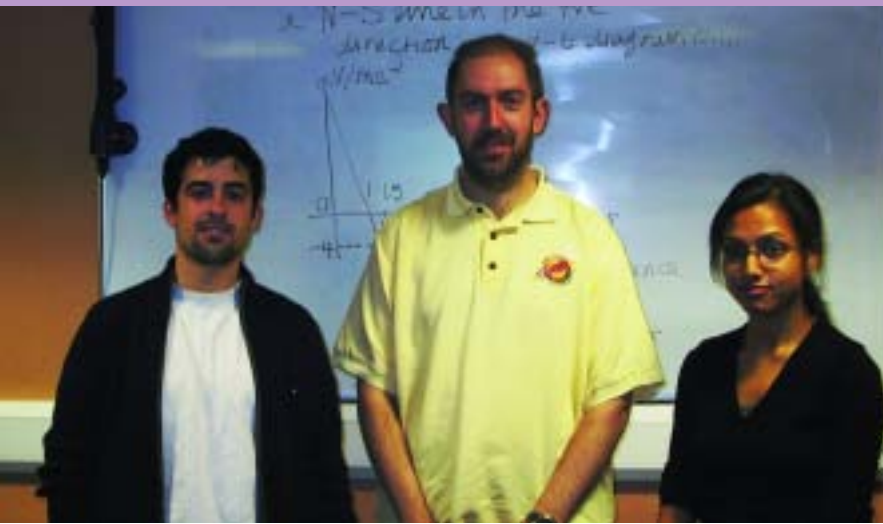
The children, working with two curators, a professional musician, a writer and an animator, produced storylines, scripts, images and music. The project also brought together families and local communities for a celebration evening at The Whitworth Art Gallery where the achievements were shared.

The Roots and Wings scheme is funded by the Carnegie United Kingdom Trust and the Esmée Fairbairn Foundation. The Gallery's project was funded by Created Partnerships and took place between January and May 2005.



Community

Access all Areas



Manchester Computing's Collaborative Working Developments Team is working with academics from the School of Mathematics to teach Further Maths AS-level using Access Grid, an advanced, software-based video-collaboration system.

The project, funded by the University's Distributed Learning and Widening Participation Funds, allows Maths tutor Samina Ali to tutor student Shamrez Ahmed in Bradford in real-time - enabling him to undertake a course that his college doesn't normally have the resources to offer.

"It's surprising how easily we've adapted to interacting over Access Grid," said Samina, who will also produce guidelines on the use of Access Grid for teaching and learning. "You quickly forget that the other person isn't actually in the room!"

The University's side of the system, set up by Technical Support Officer Javier Gomez Alonso, includes three microphones, four cameras and a tablet PC, document viewer and whiteboard to transmit Samina's documents and workings-out. Three projectors also display images from both sides onto a wall-sized screen. In Bradford, Shamrez works at a scaled-down version including a single camera and microphone, three TFT screens and a tablet PC.

As well as providing tuition the project aims to evaluate the system and related tools, analyse gaps in its provision and develop the technology to address them. The usefulness of the integrated whiteboards is of particular interest, as the spontaneous demonstration of mathematical methods on blackboards has been central to Maths tuition for hundreds of years.

Project Manager Mike Daw said, "This is a great example of the University working with the community, and the technology means we can now support projects much further afield. It also demonstrates our commitment to evaluating and adopting cutting-edge technologies, which in turn will attract the brightest and most ambitious students and researchers."

The University is a pioneer in the use of Access Grid, establishing the UK's first system in 2001 and now running a national support centre for around 60 other 'AG nodes'. The system enables a whole range of collaborative projects, and Mike is keen to support other interested groups across the University. To find out more please e-mail accessgrid@manchester.ac.uk.

Careers Scoops Top Award



The University of Manchester's Careers Service has been voted the best in the country for the third year running in the latest survey of graduate recruiters.

More than 120 graduate recruiters took part in the AGR/Barkers National Graduate Media Audit and Manchester beat off stiff competition from Cambridge and Oxford, whose university careers services ranked second and third respectively.

Jane Ratchford, director of the Business, Careers & Community Division (BCCD) at The University of Manchester said: "We recognise that the job market for graduates is becoming ever more competitive. Students need all the support they can get in establishing contacts, getting experience and developing skills that employers are looking for."

What's On

The Whitworth Art Gallery

DISPLAYS/COLLECTIONS

The Wages of Sin and Virtue's Reward Moral Prints in the Age of Dürer, to 6 November

Woodcuts, engravings, etchings and illustrated books from the collections of the University of Manchester in the Whitworth Art Gallery and the John Rylands Library.

This exhibition highlights the moral messages communicated to people of the late Middle Ages and early Reformation through the medium of prints published in Northern Europe.

The Object of Encounter Aura and Authenticity to February 2006

The first in a series of three annual exhibitions devised to explore the effects of interpretation and display methods on visitors' responses to art works. The series of three exhibitions have been organised in collaboration with students and staff of

the Centre for Museology in the School of Arts, Histories and Cultures at the University of Manchester.

The Triumph of Watercolour to 7 August

The early years of the Royal Watercolour Society 1805-55. This exhibition celebrates the bicentenary of the Royal Watercolour Society with examples by Turner, Cotman, Fielding and many others. After the Royal Academy, the RWS is the oldest artists' exhibiting society in Britain produced artists of remarkable genius.

On Friendship to 23 September

This exhibition examines the notion of a queer aesthetic in post war British art and includes works by Lucien Freud, Francis Bacon and David Hockney.

TOURS AND EVENTS

Every Saturday at 2pm there is either an Exhibition Tour or an Eye-Opener Tour.

Whitworth Art Gallery, Oxford Road, 0161 275 7450 www.whitworth@manchester.ac.uk

Opening hours Mon to Sat 10am - 5pm, Sun 2pm - 5 pm FREE Admission

Gallery Café 0161 275 7497 The café sells a selection of drinks and light meals.

Gallery Shop 0161 275 7498 The bookshop stocks a range of art and design books, cards and gifts.

Collection Exhibitions Archive now online. The Whitworth's online 'Collections Catalogue' now allows you to browse and search selected exhibitions held at the Gallery over the past 10 years. Follow the link from homepage at: www.whitworth.manchester.ac.uk

Gig Guide Manchester Academy 1, 2 & 3

Tues 7 June
The Herbaliser
The Explosion

Thurs 9 June
Underoath

Fri 10 June
Twisted Folk
Micah P Hinson

Sat 11 June
The Clone Roses

Sun 12 June
The Trashcan Sinatras

Mon 13 June
Black Rebel Motorcycle Club
Walking Concert

Tues 14 June
Reel Big Fish
Useless ID

Wed 15 June
Team Sleep

Fri 17 June
Reuben
Marlin

Sun 19 June
Patty Griffin

Tues 21 June
Dear Superstar

Weds 22 June
Maria McKee
Sun 26 June
Uncle Brian

Tues 28 June
Pennywise
Antony & The Johnsons

Weds 29 June
Ryan Adams & The Cardinals
The Conversation

Thurs 30 June
AKON

Fri 1 July
Finch

Sat 2 July
Shane MacGowan & The Popes

Sun 3 July
Steve Earle & Alison Moorer

Students' Union Oxford Road, Manchester, M13 9PL

Tickets from: Piccadilly Box Office, easy Internet Cafe, (c/c) 0871 2200260

Online @ www.manchesteracademy.net Royal Court (Liverpool) 0151 709 4321 (c/c)

Students' Union 0161 275 2930

Burlington Society

The Society of Mature Students and Postgraduates in the Universities of Greater Manchester

END OF YEAR PARTY

Thursday 9th June 7.30pm – Midnight

Food, Disco, Students' Union Bar prices and special offers!

Burlington Rooms, Schunck Building, Burlington Street (next to JRUL)

0161 275 2392 www.burlington.man.ac.uk

Tabley House

The University of Manchester's Stately Home. Small conference and meeting rooms available year-round. Licensed for weddings and baby-naming ceremonies.

Tabley House

Knutsford, Cheshire, WA16 0HB

Tel: 01565 750151 www.tableyhouse.co.uk

email inquiries@tableyhouse.co.uk

International Society

THEATRE AND MUSIC

For details about the availability of tickets for various theatre and music performances, please visit our website.

TRIPS

Sat 11 June

Alton Towers

Fri 17 - 19 June

Overnight Trip to Scotland visiting Loch Lomond and Glasgow

Sat 18 June

Kendal and Bowness-on-Windermere

Sun 19 June

Medieval Fayre at Tatton Park

Fri 24 - 26 June

Overnight Trip to Bath with a visit to Stonehenge

Sat 25 June

Robin Hood's Bay and Scarborough

Sat 2 July

Blackpool

Sat 9 July

Colwyn Bay and Llandudno

Sat 16 July

Matlock Bath and Bakewell

Sat 23 July

Keswick

Sat 30 July

Fountain's Abbey and Harrogate

International Society,

327 Oxford Road (next to Krobar)

0161 275 4959

www.internationalsociety.org.uk

Open: Monday-Friday 9.30am - 5pm



Small World Cafe
12-3pm Monday - Friday

Company F/Z
Part 1 Throat - Part 2 Spike Islands
Part 1 Winner of the 2002 Total Theatre Award (Edinburgh Festival) for excellence, Throat is a witty and sexy synthesis of circus, physical comedy/cabaret and dance with something profound to say about masculine identity and vulnerability. A stunning display of physical grace and eroticism.

Part 2 In a modern world where ritual rarely exists, Company F. Z show the ones that continue behind closed doors, where people locked in the comfort of repetition are living in constant hope. Three characters become each other's worst nightmares as they inadvertently slip into each other's world instigating a spiral of chaos
Thu 9 Jun 2005 - Sat 18 Jun 2005

Manchester Arts Education Initiative 05
Sky Burial & London 1945 are performed each night of this annual festival. Sky Burial explores the relationship between China and Tibet with a particular emphasis on Tibetan culture and religion. London 1945 examines life in the capital city at the end of the Second World War, and the creation of the welfare state.
Fri 24 Jun 2005 - Fri 8 Jul 2005

Contact Theatre, Oxford Road, Manchester
Tickets/Info: 0161 274 0600

For information on other events please visit our website www.contact-theatre.org
A limited number of tickets are available from just £4 on the day from the Ticket Office between 11am - 4pm daily.

John Rylands Library

The John Rylands Special Collections Library, Deansgate, will be closed for a period of approximately 2 years, until 2006, for essential refurbishment and the construction of a new visitor and interpretative centre. Access to all the special collections is available through the main University Library on campus. A Special Collections Reading Room is open on Floor Purple Four, Monday to Friday 10am - 5.15pm and Saturdays 10am-1pm. Readers may find it helpful to contact us in advance on 0161 275 3764. Further information can be found on our website

www.rylibweb.manchester.ac.uk/spcoll

Chaplaincies

St Peter's House Chaplaincy

SUNDAY WORSHIP
10am Group Work
11.15am Morning Worship
6.30pm Evening Worship (Term-time only)
FOYER 10am-4pm. An area where students and staff can relax and meet friends. A tea/coffee machine is available.
Precinct Centre 0161 275 2894
sph.reception@manchester.ac.uk

Avila House RC Chaplaincy (next to the Holy Name Church)

Mass Times
Mon - Fri 1.05 pm (term-time only)
Oxford Road 0161 275 6999/273 1456
Chaplains also available Monday - Friday
Floor B, Room B25, Renold Building
0161 200 2522

Mosque: Sackville Street Building
Prayer Room: Renold Building B26

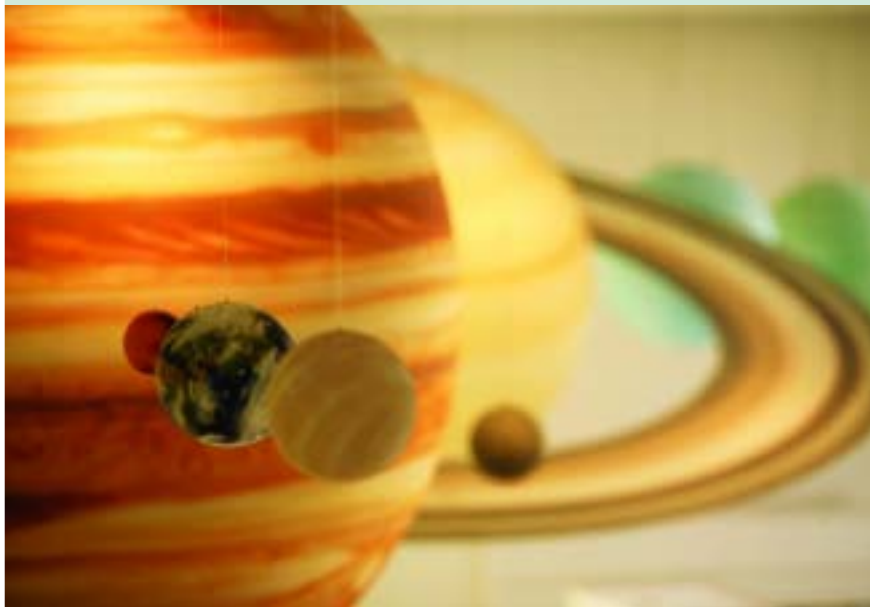
Jodrell Bank

The facilities at Jodrell Bank are going through a period of redevelopment. The Visitors Centre currently has a café, an exhibition space and a 3D theatre open, and visitors can still explore the various trails and the natural habitats of the Arboretum's 35 acres with its 2,000 species of trees and shrubs and National Collections. In January 2004 Jodrell Bank completed a 180 degree observational pathway close to the base of the world famous Lovell radio telescope.

EVENTS

Wednesday 6th July 2pm
A Guided Walk of the Arboretum, 'Trees in Britain'

Jodrell Bank Science Centre & Arboretum
Macclesfield, Cheshire 01477 571339 www.jb.manchester.ac.uk



Friday 15 July 9pm to 12.30am.
Harry Potter and the Half Blood Prince Book Launch. View the Night Sky through optical telescopes, astronomers on hand to ask any questions you may have about the night sky, 3D presentations, face painting and take your copy of the latest Harry Potter book home with you. Admission by pre-booked ticket only. Tickets: Adults £2.00, Children £1.50.

Monday 1 to Friday 5 August and Monday 8 to Friday 12 August
'Meet an Astronomer' find out the answers to all those puzzling astronomical questions. This event takes place under the pagoda on the Observational Pathway at 2pm each day.

Wednesday 10 August 2pm
A Children's Guided Walk of the Arboretum to look at Native Trees. Booking is essential. Children must be accompanied by an adult.

Manchester Museum

Fridays (during term time), 11am -12 pm
Magic Carpet
Storytelling and story making for the under fives.

Special Exhibition until Sunday 16 June
Life Through Time

An exciting exhibition, exploring the earth and our place in it, where you can help make the exhibits.

Special Exhibition from 14 June - 7 July
The Throne of Weapons

A life size throne made by the Mozambican artist Christavao Canhavato, from decommissioned arms collected since the end of the civil war in 1992. Part of the British Museum partnership UK programme.

Thursday 16 June 5.30-8pm
Throne of Weapons: War in Pieces

An open discussion on experiences of conflict and conflict resolution in the world today. Along with invited panel members the general public are invited to listen or join in. The evening includes a viewing of The Throne of Weapons. The event is free but booking, on 0161 275 2648, is advised.

Saturday 25 June 11.00am to 4pm
Throne of Peace Celebration

Join in the Refugee Week celebrations with an event featuring stalls from community and campaign groups, film, performance and a dance workshop. Help our resident artist create a sculpture for peace based on the new exhibit, The Throne of Weapons. This event is free and there is no need to book.

For details of all our summer events, please visit our website.

All drop-in events cost £1 per child, unless otherwise stated. For group bookings please call 0161 275 2648. Children must be accompanied by an adult.

Manchester Museum Oxford Rd, Manchester
0161 275 2630, www.museum.man.ac.uk
Open: Mon-Sat 10 - 5pm; Sun 11- 4 pm.
FREE Admission. www.museum.manchester.ac.uk

Noticeboard



Come and walk with Noddy and raise funds for children's arthritis.

Make way for Noddy.....the popular Enid Blyton character is appealing to local youngsters to join him for the arc Noddy Walk in Manchester next month to raise money for research into children's arthritis.

The three-mile Manchester Noddy Walk will take place in Platt Fields Park, Fallowfield, on Friday, June 17, at 6pm.

Marie Arnold, area appeals manager for arc (pictured with Noddy) said: "We're hoping that lots of children and families will register for our Manchester Noddy Walk. Noddy himself will be there to wave everyone off, and we're hoping schools, clubs, and families will get involved to make the event a big success. We'd like everyone who takes part to try to raise £40 in sponsorship." To register for the arc Noddy Walk go to www.noddyappeal.org or call 01246 541108.

Public Lectures at The University of Manchester

Tuesday 28 June 2005

"Should the Public Trust the Scientists?" by Prof Lord Robert Winston (Professor of Fertility Studies at Imperial College School of Medicine, Head of Reproductive Studies at the Hammersmith Hospital, and renowned broadcaster). Renold Lecture Theatre, Sackville Street Reception 5pm – Lecture 6pm. .

If you would like to book a ticket(s) for the Lecture, please email: public-events@manchester.ac.uk by no later than Wednesday 22nd June.

Wood Street Mission Lottery

Joint IPEG and Tyndall Centre Seminar: "Clumsy solutions for a complex world". Prof Marco Verweij (Singapore Management University). 4pm, Room 3.51b, Williamson Building.

Organic Materials for Electronics Consortium

Wednesday 8 June

One Day Meeting
Bragg Lecture Theatre, Schuster Building,
Brunswick Street
10.50am – 4.45pm
Attendance is free and all are welcome but to book a place, please email
Helen.jones@manchester.ac.uk.

The Graduate Recruitment Fair @ Manchester

Wednesday 15 and Thursday 16 June 2005
Armitage Centre, Fallowfield, Manchester.
10.30am - 4.00pm each day.

Over 160 exhibitors expected all with graduate vacancies starting this summer/autumn. DIFFERENT COMPANIES EACH DAY, so visitors need to attend both days to make the most of the opportunities on offer. Details on www.manchester.ac.uk/careers/fairs

International Energy Agency Data to be released to UK Academia

Academics interested in gaining free access to reliable and continuously updated international IEA statistics on energy production, trade, stocks, transformation, consumption, prices and taxes and greenhouse gas emissions, gathered from 30 OECD and over 100 non-OECD countries world-wide, should contact Keith Cole, Director of ESDS International at MIMAS (keith.cole@manchester.ac.uk or 275 6066). Access will be given to authorised users via Athens authentication and registration with the Economic and Social Data Service (ESDS), a national data archiving and dissemination service.

The Friends of the John Rylands Library

Fundraising event to celebrate the Friend's first anniversary, at the University's Tabley House near Knutsford

6.30 – 8.30pm, 30 June 2005.
Drinks, canapés and tours of the main rooms of the house on offer.

Tickets £12, including £4 admission charge to Tabley House from j.barrett@manchester.ac.uk or by post from Dr D Thame, 12 St Albans Avenue, Heaton Moor, Stockport, SK4 4LR. Cheques should be made payable to Friends of the John Rylands.

RAE Panel

The University has the third highest number of panel members involved in the 2008 Research Assessment Exercise, which assesses the quality of UK research. The panel will include 35 representatives from Manchester, beaten only by the 45 members from Oxford and 42 from Cambridge.

Iyengar Yoga Classes

£3 per session

Thursdays 12.30 – 1.30pm
Room D45b, Sackville St Building
For more info email
hilary.marsh@manchester.ac.uk

Einstein's First lecture in Britain.

Monday 13 June

Einstein presented his first ever lecture in Britain in the Whitworth Hall in June 1921. His theory of general relativity was spectacularly confirmed by observations at the 1919 eclipse and he became a world star overnight.

This lecture will be re-enacted in the Whitworth Hall at 5 pm. This time, the lecture will be in English and Professor Einstein, played by actor Michael Roberts, will join the audience after the lecture to answer questions. Admission is open to everyone within the University. Contact Professor Robin Marshall at Robin.Marshall@manchester.ac.uk to obtain a ticket.

The Academy of Medical Sciences' Raymond and Beverly Sackler Distinguished Lecture in the Medical Sciences

"Towards Therapeutic Applications of Engineered Zinc Finger Proteins" presented by Sir Aaron Klug.

Monday 11 July, 5.30pm,

Stopford Building, Lecture Theatre 2.

More details and a registration form are available at

www.mhs.manchester.ac.uk/news/#d.en.22093

One size fits all?

Thursday 16th & Friday 17th June.

One size fits all? Contemporary challenges of integration and fragmentation". Faculty of Humanities Multidisciplinary Conference

Humanities Lime Grove Bldg

The two day conference is being organized by a team of postgraduate research students from across the Faculty. The organizers welcome and encourage a variety of presentations from postgraduate students, professionals and academics.

To submit proposals (no more than 500 words) and suggestions for keynote speakers please email pgconf@FS1.ec.manchester.ac.uk

For more information visit

www.humanities/manchester.ac.uk/conference/s/integration

Volunteers for Psychological Studies Sought

The School of Psychological Science's Division of Psychology is looking for paid volunteers to participate in psychological studies. Individuals of 50 years old and over are needed to participate in experiments on a wide range of topics, including attention, memory, personality, social relations, emotions, learning, and attitudes. Participants will receive a monetary contribution towards expenses, which will vary depending on the experiment. If you are interested in participating please contact Pip Brown on 57348 or pip.brown@manchester.ac.uk (Monday to Wednesday noon).

Seminars

Monday 6 June – Tuesday 7 June

Pharmacy and Pharmaceutical Sciences Postgraduate Away Day. Monday 2pm-4pm, Tuesday 9am-5pm. Martin Harris Building.

Tuesday 7 June

Nursing, Midwifery & Social Work Research Forum: "Using focus groups in sensitive research: 'Let's talk about sex'". Angela Meah, 12.30pm, COPE Room, Coupland III Bldg.

NPCRDC: Can contracts and incentives be used to reduce health inequalities? Prof Martin Roland. 2pm, Seminar Room 2, 5th Floor, Williamson Bldg.

Thursday 9 June

The School of Mathematics Colloquium: "Random graphs and internet graphs". Fan Chung Graham (San Diego, California). 2pm, Room CO19, Maths and Social Science Building, Sackville Street.

Faculty of Medicine Imaging Science and Biomedical Engineering Clinical Radiology: "Consanguinity and the brain". Dr W J Gunawardena (Preston). 5.15pm, LT3, Stopford Bldg. All welcome.

Friday 10 June

Manchester Centre for Nonlinear Dynamics: "Photo-induced effects in doped liquid crystals". Dr Eren San, 2.00 pm. "Using resonant X-ray scattering to investigate changes in the physical properties of antiferroelectric liquid crystals". Dr Nick Roberts, 2.20 pm. "Simulation of de-mixing in a granular mixture". Dr Jo Beecham, 2.40 pm. "Reopening fluid-lined elastic tubes". Alex Heap, 3.30 pm. "The transition to versus from turbulence in pipe flows". Dr Jorge Peixinho, 3.50pm. "Onset of oscillatory convection in molten Gallium". Dr Anne Juel, 4.10pm. School of Mathematics, Newman Building, G15.

Tuesday 14 June

NPCRDC: "Reporting of homicide by people with mental illness in the national press". Dr Megan Kalucy. 2pm, Seminar Room 2, 5th Floor, Williamson Bldg.

Wednesday 15 June

Distributed Learning: "An introduction to conversation theory and its applications in education and epistemology". Dr Bernard Scott (Cranfield University). 4pm, Council Chamber, Whitworth Building. To book a place email patricia.bannerman@manchester.ac.uk

Thursday 16 June

Imaging Science and Biomedical Engineering Clinical Radiology: "Symptomatic breast screening". Dr J S Jeffree (Salford). 5.15pm, LT3, Stopford Bldg. All welcome.

Pharmacy and Pharmaceutical Sciences: "Adding clinical and commercial value to products' life cycle via drug delivery systems". Dr Snezana Milojevic. 4pm, LTA, Coupland 3 Bldg.

Tuesday 21 June

NPCRDC: "Don't mention the F word – at least not until you have tried the A and B words". Prof Chris Todd (Director of Prevention of Falls Network Europe). 2pm, Seminar Room 2, 5th Floor, Williamson Bldg.

Thursday 30 June

Joint IPEG and Tyndall Centre Seminar: "Clumsy solutions for a complex world". Prof Marco Verweij (Singapore Management University). 4pm, Room 3.51b, Williamson Building.

Classifieds

House for Sale

Milnrow. 2 mins from M62 & train stat. 4 bedrm stone terr inc lrg loft rm, gch, dble glazed. Gdn in the back. £125,000 ono. Email: Durant@manchester.ac.uk

Pendle Area. Edwardian semi-det hse with a wealth of period features inc org stained-glass windows. Quiet loc, close to motorway & 45 mins from M/cr. Comprising 4 bedrms, 3 recep rms, kit, bathrm, sep wc, lrg entrance hall, gch, combi boiler. Exc décor throughout, with natural wood flrs, panoramic views of open countryside. Lrg gdns to back, side & front. Must be seen to be appreciated. Offers in region of £185,000. 01282 614 128.

Alderley Edge. An appealing, individual det family hse, tastefully extended & refurb. Offering well-balanced acc. Set in secluded mature grnds. Det garage, reception hall, din rm, family rm/study, drawing rm with conservatory off. Quality kit with natural wood units, breakfast rm, utility, cloakroom with wc. 4 bedrms, master suite with shwr rm & dressing rm. Family bathrm. Rm in loft. Gas heating, UPVC dble glazing. 10 mins walk to village & stat. £695,000. 01625 585 905 or www.andrewjnowell.co.uk

Chorley. Lovey det family home for sale/to let. A very spac property with 3 recept, 4 bedrms, CGH, DG, equip kit, bathrm/wc, wc/cloakrm. Built-in shwr in 1 bedrm, dble driveway & garage. Chorley is a quiet market town with perfect transport links. Reasonable prices. 01257 276 154 or email: obshorr@hotmail.com

Leigh. Well presented 2 bedrm semi-det hse close to town centre & bus stat. Not far from A580 East Lancs Rd. Quiet, cul-de-sac position, long drive, lrg f & r gdns & conservatory. Dble glazed, GCH, no chain. £98,500 ono. 07743 074 666.

Normandy. Beautiful 18th C 3 bedrm, dble garage prop. Inc 2 superbly renovated gites, all with central heat. Quiet village, coast 30 mins, ferries 45 mins. Parking, gdn. £237,171. EU 345,000. Email: k.howell@manchester.ac.uk

Accommodation to Let

Withington. Short term solution. 1 rm + box rm to let for 2 mths from Sept. Rent neg. 0161-434 6139.

Bramhall/Cheadle Hulme. F/F 2 bed Bungalow, GCH, newly dec throughout. New Combi boiler, microwave, auto washer etc. Very comfortable & cosy. Small pleasant gdn f & r. Parking for 2/3 cars. Extremely sought after loc. Close to bus/train to Stockport/M/cr. Prof staff only. 0161-485 3112.

Victoria Park. Spac f/f luxury 2 bed apart. Walking distance to Univ. Open plan liv rm, laminate flrs throughout. French windows onto grounds, parking, w/dryer, d/washer ch. £650pcm. 0161-256 1173.

Spac 2 bed f/f s/c 1st flr flat in quiet safe residential area close to public transport. Suit staff or pg. £525pcm inc water rates. 0161-431 4897 or email: voirrey@ntlworld.com

Mottram/Glossop border. Spac 2 bed ground flr apart. Neutral dec throughout, exc cond. Aprox 150 yrs old. Grage & small encl gdn to rear + forecourt parking for 1 car. Property is close to M67, 5 mins Tameside Hospital. Highly sort after area. Surrounded by open countryside. Viewing highly recommended. £550pcm. 0161-480 8583.

Glossop. 2 bed terr property. New bathrm, kit, new carpets, neutral dec throughout. Exc cond. GCH, dble glazed. Viewing highly recommended. Avail immed. 10 mins town centre rail/bus stat direct line to M/Cr. Close to countryside, Longendale Trail. Sailing Club, swimming baths & local library. Council Tax Band A. £525pcm. 0161-480 8583.

Didsbury. Spac 2 bedrm furn grnd flr flat. Lrg 18ft lnge. £685pcm inc service charge. Dep £650. 0161-445 0361.

Castlefield. Luxury 1 bedrm warehouse conversion apart. Wooden flrs, f/f, high spec. Central canal loc. Walking distance to town centre. £600pcm. 07970 075 874 or email: ronmccaffery@telecomplus.org.uk

Keppel Road, Chorlton. Acc for 4/5. Close to shops & bus stop. 2 bathrms, security alarm, smoke alarm, fitted kit. GCH, w/machine. 3 miles to Univ. 07887 775 556 after 3:30pm

Withington. 4 bed semi, 1 single, 3 dble, fitted kit, bath shwr, GCH, mostly dble glazed. Nr village & bus stop, parking. £45pppw. 07970 075 874 or email: ronmccaffery@telecomplus.org.uk

Chorlton. Nice dble rm. Woman prfd. Must be non-smoker. £300pcm. 0161-283 9481 or 07966 910 388.

City Centre, Princess St. Modern, spac, f/f apart. Dble bedrm, balcony. Suit a couple. Avail July. £600pcm. 07778 019 367 or email: Joanna.kenny@mercercor.com

Heaton Mersey. 2 bed mews terr in conservation area. Lrg lnge & kit, bath & shwr. Ideal loc for Stockport/M/cr/Didsbury & all motorways. Gdns f&r. Garage, conservatory. Part furn. Prof/staff/£550pm. 0161-448 1890 (evgs) or 07789 926 353.

Holiday Accommodation

Puerto del Carmen, Lanzarote. Lrg stylish apart. Sleeps up to 5. Both dble bedrms en-suite. Balcony overlooks beach & sea. From £245pw. Special prices for families. www.casapalmeras.co.uk

Tuscany holiday cottage to let. Superb setting near mountains. Lrg gdn, air conditioning. Florence, Siena, Arezzo easily accessible. Ideal for walking, sight-seeing, museums, restaurants, wine tasting, swimming & much more. 0208 699 8883. Details and photos on website: <http://freespace.virgin.net/gp.ck/> Email: gp.ck@virgin.net

Andalucia-Gaucin. Beautiful white village, uniquely designed villa, built as 3 apart & 2 cottages with central courtyard & pool. Sleeps 2-13. Breathtaking views to Gib & N Africa. 07801 341 856 or www.thespanishvilla.com

Georgian Country house on Shropshire/Welsh border. About 1 hr from Manchester. Private gdns, lovely trees. Sleeps 16 in 8 bedrms, 6 bths. Luxury. Ideal for family gatherings. Email: george.dowswell@man.ac.uk

Great comfortable farmhouse holiday in S Brittany. Spac, attractive, comfortable, peaceful. Sleeps up to 8. Visit www.tyjaouen.com or phone +33 2 98 59 48 83 or +33 2 98 59 45 88.

Luxury Villa in Orlando Florida. 4 bed, 3 bath with 24ft pool & spa, overlooking lake. Close to Disney, shops, restaurants and local attractions. Very spac, beautifully furn, 4-poster bed, fully equipped games rm, accommodates up to 8 people + cot. From £400pw. 0161-439 0408 or email: kate@mickeysorlandovilla.co.uk

Tuscany. Summer rental in the hills nr Lucca above the spa of Bagni di Lucca. 17th C idyllic farmhouse, sleeps 10, private pool, sun terraces, olive groves & vines. Stunning views, unspoilt surrounding, exc base for exploring medieval & renaissance Italy or just relaxing. 0039 0583 804 112, email: vcicamarota@interfee.it or www.geocities.com/lemuradisotto

Montes de Malaga, Andalucia. Single storey det cottage with swimming pool in tranquil mountainside loc & panoramic views. Sleeps 4 adults comfortably in dble & twin bedded rms. 40 mins from Malaga airport. Loc is ideal for those who love peace & quiet & the natural world. The Montes de Malaga Natural Park is just over the ridge. 0161-200 4317, email: jimfdstott@yahoo.com or website: www.cortijo-maranon.com

Edinburgh Old Town. Beautiful 1 dble bed flat. F/F with stripped wood flrs, new & fully equip kit & attractive bathrm with bath & shwr. W/dryer, tv with integrated DVD-radio & digital set top box. Avail for single let 1 July to 5 August (£800 inc) or short let during festival (£375pw inc) & after festival (£250pw inc). 0207 226 9800 or 07939 050 925. Email: jenniferwatson@hotmail.com or www.oldtownflat.co.uk

Tuscany. Beautiful apart loc on 1st flr of an ancient palace in the historic centre of the fascinating city of Lucca. Completely renovated with 2 dble bedrms & 2 bathrms. 18k from Pisa airport, close to Florence, Siena & many other Tuscan localities. Tel/Fax +39 0583 950 872 or email: info@viaromaimmobiliare.com

Florence, Italy. Recently refurb flat in apart block. Sleeps 3, 1 master bedrm with twin beds. Lrg boxrm with 1 bed, mod bath with shwr. Entrance hall which doubles as a fully appointed kit & din rm. A huge terrace for those al fresco diners. The flat is in pristine cond & avail on a weekly basis. Email: F.Digioline@sheffield.ac.uk

Devon. Delightful semi-det early 19th C cottage with lrg gdn, loc in a designated area of outstanding natural beauty. 10-15 mins walk from the River Otter & the coast at Budleigh Salterton. Sleeps 5 in 3 bedrms. Email: stanley.roberts@manchester.ac.uk

Hungary. Lrg villa with orchard gdns. 10 mins walk from Lake Balaton. All mod facilities. 4 lrg bedrms, 2 baths. Sleeps 14+. £250pw. 0161-306 8956 or email: durant@manchester.ac.uk or ditke@webmail.hu

Italy-Venice. Charming apart, f/f, 3 bedrms, 2 bathrms, can sleep 5. £650pw. Email: tagariello@libero.it

Car for Sale

1999 Peugeot 106 Zest 2. V Reg, 5dr hatchback, genuine 21k miles. 2 careful lady owners. CD/radio, sunroof, exc cond, cheap insurance, very econ. Tax & MOT. £2,450 ono. 0161-797 2152 or email: Paul.Meehan@manchester.ac.uk

Misc Sales

Conservatory suite, from Housing Units. 2 seater settee with 2 chairs & matching glass coffee table. Only 3 yrs old, lovely design & cond. £225. 0161-442 9763 (evgs).

Childrens single bed, Mothercare, pine 75cm x 190cm with mattress. Exc cond. Only 1 yr old. Cost £180, sell for £60 ono. (27)52359.

Gents Ridgeway Mountain Bike, 21" frame, 21 speed, black. Brand new, never used. £120 ono. 01254 672 858.

Slumberland teak 5ft headboard £80. Pine single bed headboard £30. Glass topped teak-frame coffee table £70. 4 din chairs teak with fabric seats £60. Grandmother clock 8-day, Westminster chime £200. Kit table 3ft circular, dropleaf £20. Electrolux upright f/freezer £30. Philips r/t/r player unit with speakers £30. Cabinet £10. 4 single beds offers. 0161-980 7004 or 07747 577 052 or email: r.f.griffiths@manchester.ac.uk

Shopper electric buggy 4-wheeler £400. Locomotor bath-lift chair £300. Wheelchair, black & chrome £100. Beechwood commode chair £50. Cantilever bedside table, adjust height £20. 0161-980 7004 or 07747 577 052 or email: r.f.griffiths@manchester.ac.uk

Harp full concert 7-pedal action, and Erand "Grecian" 43 string. Fitted with new soundboard. In fine shape as a fully playable ono instrument. £6k. 0161-980 7004 or 07747 577 052 or email: r.f.griffiths@manchester.ac.uk

Flowerpots of various sizes & gd quality top soil. Collect & provide own bags. Free due to hse move. (27)58649 or 01457 832 072 or email: diana.knight@manchester.ac.uk

Wilson Peck upright piano. Made in Denmark & described as a Minipiano, Miniroyal. Lovely tone & nice piece of furniture £500. 0161-861 9289 or sfkelly@ntlworld.com

BA (Hons) Manchester. Arts Hood & Gown (tall). £75 ono. 0161-224 4089.

2 acrylic newspaper display stands. 40cm wide x 30cm deep x 90cm high. Avail free to anyone who will collect. (27)52113.

Rucsacs. North Face LodeStar 60, 60L + 2x4L bellows. £65. Karrimor Eclipse 30-35L, brand new £35. <http://personalpages.umist.ac.uk/staff/chris.tan/forsale.htm>

Orange 3G Mobile Office PCM Card & sim card for laptop computer. Can demonstrate it. £95. 07891 896 733.

New hardwood exterior dr. Stained glass panels, still wrapped, cost new £150, will accept £75. Router table universal fitting, fits most routers, New unused, still in box £25. 63721 or email: james.f.kirk@manchester.ac.uk

Slimline dishwasher, Tricity Bendix 'Ecoplus' model, white. 450mm wide, 600mm deep, 850mm high. VGC with full operating instruct. Buyer to collect. £25. 0161-431 8565.

Wanted

Kettler pedal go-kart in gd cond. Email: sally.freeman@manchester.ac.uk

Services

Ian Hancock, BDS, Dental Surgeon, 180 Oxford Road (nr Manchester Museum). Courtesy, quality, safety. Same day attention for genuine emergencies. 0161-273 8484.

Exp. Joiner. All types of carpentry, woodwork, joinery. Tiling & Plastering. Kitchen, bedroom & office fitting. New windows, doors, ceilings. Hardwood/laminate flooring. Skirting & dado rails, stairs & staircases. Plumbing & electrics. Bricklaying & masonry. Problems discussed. No call-out charge. Free estimates. 0161-610 8597 (answering service) or 07743 324 169.

House Improvements. From decoration to carpentry finishes. Wood floors refinished, plastering, doors, architraving, skirtings, shelving, storage/wardrobe units. Design & fix. Experienced tradesman. 0161-223 0125 ansafone & fax.

Painter/Decorator. Good quality painting & decorating, inside/outside work undertaken, tidy workman. 07840 266 473.

Counselling/Psychotherapy with Chartered Psychologist, UKCP accredited NLP Psychotherapist and qualified Life Coach with 20 years' consultancy experience. Psychometric Assessment available. 0161-865 3193 or email: fokkina@onetel.com

For all your travel requirements. ABTA 90740. 0161-764 5651 or 0845 058 7328. Email: carol.warburton@travelcounsellors.com or www.travelcounsellors.com/carol.warburton

Psychotherapy/Counselling avail for individuals & couples experiencing emotional difficulties with: relationships. Low self esteem, anxiety, loss, low feelings, childhood traumas sexuality. Member of the ITA/MIP. Chorlton & Levenshulme. 0161-224 1634.

Wedding Car Hire. Light silver blue Jaguar XJ6 avail for weddings, fully insured & dec inc fresh flowers. Prices start from £125. For further details 0161-688 0656 or email: andy@weddingservices4u.net

Therapeutic massage - reduce stress & tension & feel good with regular massage from an experienced practitioner. For more information/booking contact Josanne Cowell DTM 0161-224 1634.

Indexing. Do you have to provide an index for your book. A professional indexer will do a professional job. Arts, humanities & social science subjects. 01565 653 597 or email: wildings@btinternet.com

Colman Taylor Graphics Design. Designers of Corporate Literature. From a business card to a full graphics campaign. Suitable for research projects. Dissemination. Competitive prices. 01457 872 666 or fax 01457 877 516. Email: info@colmantaylor.co.uk www.colemantaylor.co.uk

Fully qualified electrician. 25yrs experience in all aspects of electrical installation & maintenance. Security systems for domestic & commercial premises. Free estimates. 0161-747 9443 or 07952 050 825.

Need an electrician? Richard Simpson, City & Guilds, 16th edition qualified electrician. Elecsa registered. Lighting, sockets & alarms, free estimates. 07792 236 698 or Email:rsd-electrical.co.uk

Need an extra income or want to change career. Wonderful business opportunity. 0161-333 1131 for a free info pack.

Specialist advisers to academics: Colin Coates & Partners offer tax & accounting services inc Professional salary review & retirement covering The Universities Superannuation Scheme. Local visits arranged. 01934 844 133 or email: info@ccptax.com or www.ccptax.com

Freelance Information Services. Database design, report creation, data entry, merging & duplicating. Webs site design, maintenance &

content management, Info research. Data reformatting & key wording. English-Spanish translation. 07947 606 901 or www.information-services.ac

VRP Office Solutions offers comprehensive, professional & efficient copy typing services at discounted rates for students. For dissertations, thesis work, reports, essays & course notes. 07792 737 346.

Experienced qualified Counsellor & senior trainee Gestalt Psychotherapist. Offers support to work through problems and difficulties in all areas of life. Sliding scale. 07921 913 662.

Experienced plasterer, over 18 yrs experience. All types of home improvements undertaken inc kit & bathrm fittings. Free estimates. 07815 803 116 or 07816 882 249.

Wedding, party & function band avail for the Northwest area. We cover music from The Beatles, The Rolling Stones, Kinks, Van Morrison & Elvis, Wilson Picket, Steelers Wheel, Rod Stewart, Thin Lizzy, The Jam, Understones, U2, Sterophonics, Franz Ferdinand & many more. 07910 030 341 or www.weddingpartyfunctionsbands.co.uk



PRIVATE DAY NURSERY

- Small family run nursery
- Mature qualified, experienced & knowledgeable staff
- Caring & friendly atmosphere
- Secure, nurturing environment
- Open from 7am to 6pm, Monday to Friday
- 3 months to pre-school
- Happy children
- Outdoor play area

Extra curricular activities on offer such as :

- Baby Yoga and massage
- Baby signing
- Physical Outdoor Development

88 Carmoor Road (off Hathersage Road/Upper Brook Street), Chorlton-on-Medlock, Manchester M13 0FB
For information, please telephone Sharon on 0161 248 5340 or visit our web site www.ciarastots.com

Burbidge Joinery & Construction

Quality UPVC Windows & Doors

All Windows & Conservatories are individually made to each customer's specified requirements. A family business with over 24 years' experience. Laminate and solid timber floors supplied & fitted.

For free advice or information contact: Paul Burbidge (City & Guilds qualified Joiner) 0161-494 5228



TWO-NIGHT CITY BREAKS

Paris £143; Barcelona £140; Rome £149;
Prague £135; Amsterdam £148

Prices include (1) Return flights from Manchester (including airport tax), and (2) Two nights' hotel accommodation, based on two people sharing. Subject to availability.

Delta Travel, University Precinct, Oxford Rd, Manchester M13 9RN
Tel: 0161 274 4444; Fax: 0161 274 3555; Web: www.deltatravel.co.uk



Perigordian Farm House
Sleeps 6 Adults + 2 children
DORDOGNE, FRANCE
Accom: Lounge/Dining with wood fire, kitchen, large family size bathroom, 3 double bedrooms
Swimming Pool
Email: Gillian.Hughes@wanadoo.fr

Binding Theses & Reports

- Quality materials
- Craftsmanship and competitive prices
- Latest technology to ensure perfect service

For further information please ring the Library Binding and Preservation Department
(27) 53733 Monday to Friday 0900-1600 or the Library Thesis Binding and Sales Point (27) 53749 outside these hours.



Printing for You on the North Campus

Full Colour and Black Only Digital Printing & Copying	International Fax Bureau Service
Hardback & Softback Binding	Design for Posters, Flyers, etc.
	T-Shirt & Mouse Mat Printing

Barnes Wallis Building
The University of Manchester
Sackville Street
Manchester

Internal Telephone 63269
Email (0161) 306 3269 contact@u-print.com
Web www.u-print.com



"Cosy nights, attractive prices and friendly staff"

Set in 2 acres of private grounds just a little way from the Universities, this secluded and unique location offers superb value for money, relaxing accommodation. En-suite bedrooms from only £21.00 p.p. (twin) or £34 (single).

Delicious evening meals in our dining room. Residents' bar.

Class 1 disabled access and ETC ***
see www.lkh.co.uk or tel: 0161 224 6404

Just The Job



Russell Ashworth

Head of Administration,
Faculty of Humanities

Born and initially educated in Rossendale, Russell Ashworth's HE career began in earnest with a degree in History and Politics at Lancashire Polytechnic, Preston. Although his choice of subject was purely down to personal interest, the experience provided him a wealth of transferable skills that have served him well both in life and his career.

By the end of 1998 he had moved back to Rossendale and joined UMIST and the Victoria University of Manchester as Senior Administrator at the Federal School of Business and Management.

"The School demonstrated that if you wanted to generate economies of scale and improved performance by integrating the activities of separate organisations, a federal structure had limited scope in practice," he concedes. "The only way forward was to develop a set of value-adding collaborative projects between the partners." Russell's pragmatism resulted in an impressive track-record of developing such projects, including helping to secure a Joint Infrastructure Funding award for £5.7m and develop a set of joint business and management programmes.

In 2002 he became secretary to the Project Unity Academic Group, which carried out the feasibility study for the merger. He then became Executive Assistant to the Interim Executive Dean for Engineering and Physical Sciences, before taking up the post of Head of Faculty Administration, Humanities.

The role is a challenging one, involving the management of functions from IS, finance and estates to planning and

academic services. "I have been on a steep learning-curve, but it helps that I'm a quick learner," he quips.

"One of my main objectives is to develop more efficient and effective administrative systems and processes, and the forthcoming implementation of new IS systems gives us an opportunity to review and re-engineer our business processes. I would also like to see improvements in academic-administrative partnerships, and collaborative working practices between the central administration, the Faculty and its Schools."

Outside work Russell's 14 and 18 year old sons tend to keep him busy, but with wife Sara being Head of Graduate Education in the Research Office there's inevitably a degree of talking shop too. Now that he's returned to the countryside he is also able to indulge his love of mountain-biking, and having completed the St. Bee's Head to Robin Hood's Bay coast to coast off-road challenge last year plans to enter the 50-mile off-road Mary Townley challenge across the Pennines in June.

"It can be difficult to find time for training during the week," he admits, "so I often cycle the 20 miles to or from work.

After graduating in 1987 Russell began his career in academic administration and in 1988 joined Liverpool Polytechnic; a dream move for a lifelong supporter of Liverpool FC!

Russell soon became established in both higher education and the city, and progressed to become Head of Collaborative Partnerships at Liverpool John Moores University. "By this point I'd got to the stage in my career where I needed to move institutions, and I also missed living in the countryside," he says.

A special issue of UniLife will appear in the summer. After that, UniLife returns in September 2005

News Contact

News and story ideas

Rachael McGraw (Mon-Weds)

Jo Nightingale (Weds pm - Fri)

Telephone 0161 275 2112

Email uninews@manchester.ac.uk

Events Contact

Events and listings information

Philippa Adshead

Telephone 0161 275 2922

Email unievents@manchester.ac.uk

Adverts Contact

Ads and distribution queries

Lorraine Harrop

Telephone 0161 275 2113

Email uniads@manchester.ac.uk