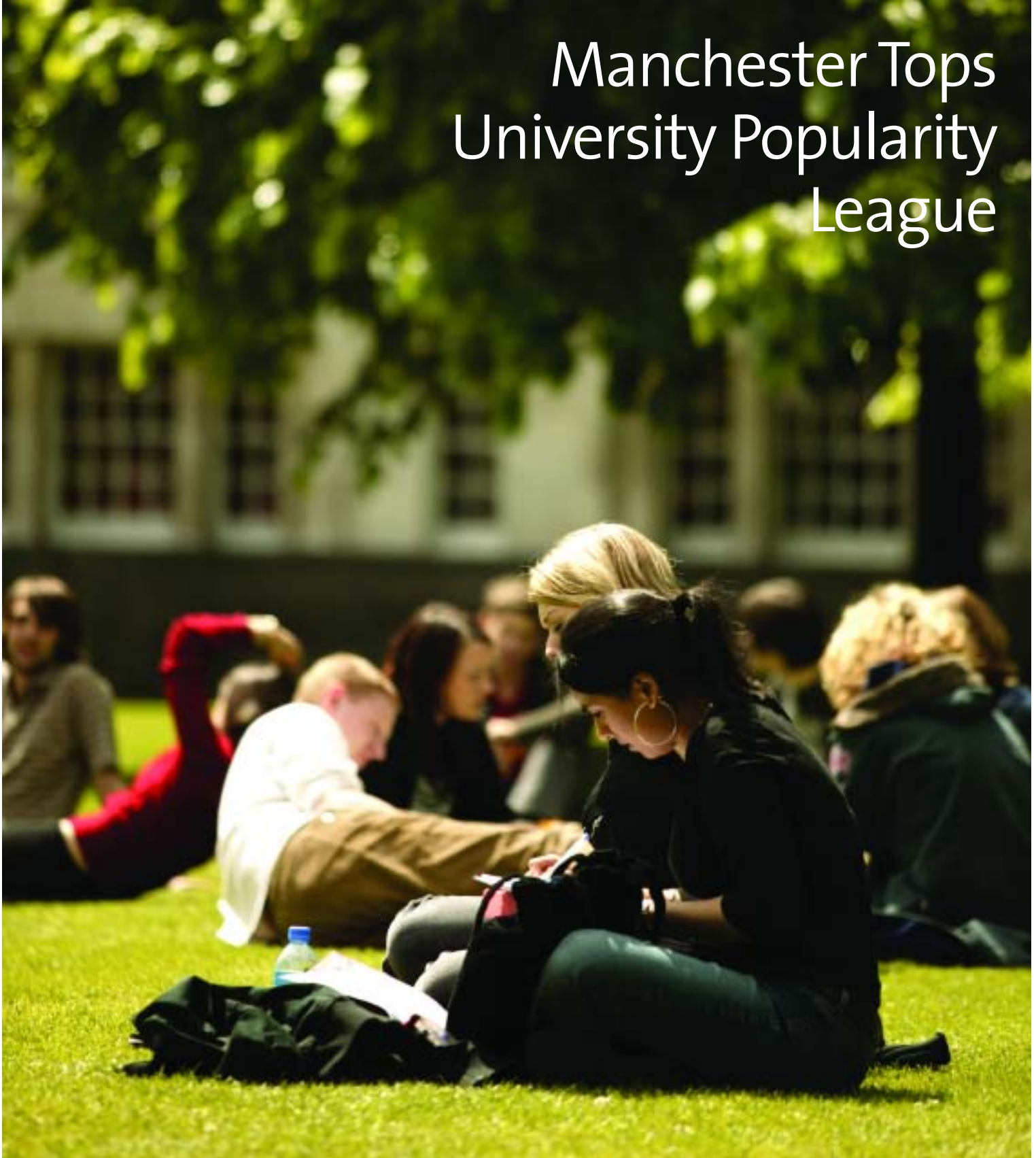


UniLife

Manchester Tops University Popularity League



NewsDigest

Contents

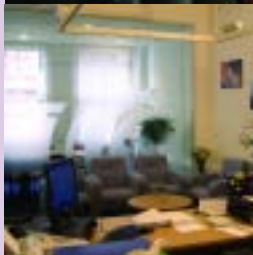
- 3** Manchester Tops University Popularity League
- 4** News
- 12** Research
- 14** All Aboard for New Bus Service
- 16** Planning and Accountability Conference
- 19** People
- 20** In The Community
- 21** Students
- 22** What's On
- 24** Seminars
- 25** Seminars/Noticeboard
- 26** Classified Ads
- 28** Just the Job

Front cover photo by Paul Cliff

A summary of the key news in this issue of UniLife:



3 The University of Manchester is the UK's most popular university, according to new figures from the Universities Central Admissions Service, having received almost 57,000 home and overseas applications for undergraduate courses since October 2004.



9 The University has launched a new office on Southampton Street in London, which can be used by members of staff visiting the capital on University-related business.



11 The secrets of a 2,500 year old mummy are being unlocked at the Centre for Biomedical Egyptology.



14 Next week sees the launch of a new bus service between Piccadilly train station and the University campus – which should ease the journey to work for many members of staff.



20 A group of schoolchildren from Saddleworth paid a visit to the School of Chemistry to find out more about University life.

Manchester Tops University Popularity League



The University of Manchester is the UK's most popular university, according to figures released by the Universities Central Admissions Service (UCAS).

The University received almost 57,000 home and overseas applications for undergraduate courses between October 2004 and 15 January 2005. This marks an overall increase of 2.3% on the previous year, and confirms the new institution as the country's premier destination for would-be students.

The figures are all the more pleasing as research has shown that other universities which have undergone a merger have experienced a drop in applications.

Delyth Chambers, Director of Student Recruitment and Admissions, said:

"The University has an excellent reputation for teaching and research and offers a wider range of subjects than any other single-site British university. Students are aware of its great reputation and want to come here to take part in the Manchester experience.

"The two legacy institutions shared approximately 3,000 undergraduate applicants each year, and so we would have expected to have lost a number of

these in comparison to last year due to the merger. In light of this, the overall performance of the University is especially positive."

One of the most dramatic increases in applications was in Electrical Engineering, which saw a 21% increase in interest despite a fall nationally of 8%. The figures also show applications to nursing and social work have increased dramatically at the University, mirroring a national trend.

News



Lord Sainsbury Visit

The Incubator Building and Core Technology Facility (CTF) construction site on Grafton Street received some notable visitors last month.

Brian Gray, Chairman of the North West Development Agency, visited the Incubator for a guided tour and meeting with representatives from tenants Renovo, Epistem and DXS Ltd. He was able to see how the CTF will provide grow-on space for current tenants of the Incubator, as well as freeing up accommodation for new tenants.

Mr Gray also met Professors Larry Gifford and Ken Douglas from the School of Pharmacy and Pharmaceutical Sciences, and discussed their plans for a Medicines Institute and Medicinal Chemistry Steering group for the region. Vice Chancellor and President and Vice-

Chancellor Professor Alan Gilbert joined them in the latter part of discussions.

The group was then joined by Lord Sainsbury, who originally opened the Incubator Building, Sir Tom McKillop (Chief Executive of Astra Zeneca) and Professor Richard Lambert of Cambridge University, during a break from the Conference 'Competing in a Global Economy' at the Manchester Conference Centre.

The group was updated on progress being made towards a CTF completion date of October 2005, with fit-out of the new facility scheduled to be completed by January 2006.

www.umic.co.uk

University to Host Networkshop 33

Networkshop is an annual event organised by UKERNA, the UK Education and Research Networking Association which manages and develops high-speed education and research network JANET. It is aimed at network managers and technical staff from the JANET community, and provides the primary forum for discussion of the latest developments in Higher Education (HE) data networks.

The conference brings together expertise from all the fields of networking, and is held at a different HE institution each year. On the 22 - 24 March, the 33rd

Networkshop will be hosted here at the University, underlining Manchester's role at the heart of UK networking developments and the rise of the University as a venue of choice for major national conferences.

The conference will be attended by more than 300 delegates, allowing IT staff facing similar challenges to compare approaches and solutions. It will also provide opportunities to discuss collaborative endeavours, meet suppliers and – when the technical sessions are over – relax among peers. The focus of this year's social activities

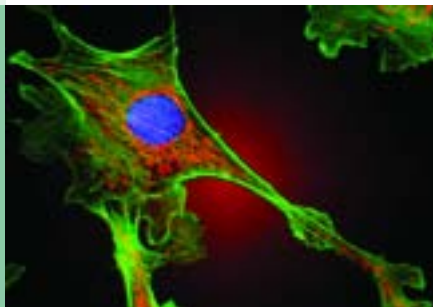
will be a conference dinner on the famous Orient Express, as it travels through the Welsh countryside.

As part of the conference programme, staff from Manchester Computing will be speaking on location-independent networking (LIN), Manchester having been a proof-of-concept site in trials of the forthcoming LIN service. Other topics discussed will include SuperJANET 5 (the next incarnation of the national backbone network), wireless networking, and network security.

For more information about the conference please visit the addresses below.

<http://www.ja.net/conferences/networkshop/> <http://www.mc.manchester.ac.uk/>

News

Picture
This

Budding David Baileys are being urged to enter this year's Visions of Science Photography Awards, which are being run by Novartis and The Daily Telegraph.

Everyone is welcome to enter, whether you're a scientist, artist, student or photographer. All you have to do is produce a photographic image that stops people in their tracks, and makes them think about science or nature in a different way.

The competition features five different categories – action, close-up, people, concepts and science as art - and in each a

£1,000 first prize is up for grabs. Entries will be assessed by a panel of judges including Bob Bodman, the Picture Editor of The Daily Telegraph and TV science presenter Dr Adam Hart-Davis.

For further details and to get hold of an entry form please contact the award organisers on 020 7613 5577, or e-mail at visions-of-science@ksaevents.com. The closing date for entries is 6 May 2005.



www.visions-of-science.co.uk

PERFECT
Partners

The Materials Performance Centre (MPC) hosted the second meeting of its 'PERFECT' project at the Manchester Conference Centre in January.



The MPC is an interdisciplinary research centre drawing together expertise from the Corrosion and Protection Centre, Materials Science Centre and the Nuclear Graphite Research Group in the Faculty of Engineering and Physical Sciences. It was set up as a research alliance with BNFL to address materials performance issues across the chemical, process and power industries, in areas including corrosion, structural integrity, graphite, zirconium and modelling.

PERFECT is a four-year European Commission Framework Six project, investigating the prediction of irradiation damage effects in nuclear reactor components using new materials data and mechanistic models.

The project aims to disseminate these new tools across the industry in Europe to complement previous and current international projects, and use them to

perform the first 'European collective' component analysis exercise. It also aims to educate young researchers about the degradation mechanisms of materials.

The meeting was attended by over 100 leading materials, engineering and corrosion specialists from 12 European countries. It was followed by a BNFL NSTS-sponsored dinner, which was attended by NSTS Business Manager Tom Rice, materials specialists from MPC and NSTS and over 70 PERFECT partners.

The MPC will in turn provide a contribution-in-kind to PERFECT, in the form of new experimental approaches to and multi-scale models of constraint, residual stress and irradiation effects on the cleavage fracture behaviour of ferritic materials.

For more information on the project please contact Andrew Sherry, Director of the MPC, at andrew.sherry@manchester.ac.uk.

<http://www.materials.manchester.ac.uk/mpc/>

News



Responding to War Through Theatre

The University's Centre for Applied Theatre Research is to host 'In Place of War' - a major international seminar for global theatre practitioners. The seminar will facilitate in depth and provocative discussions about theatre practice in places of war, and takes place on 8 and 9 April in the Martin Harris Building.

The event will bring together more than 30 theatre practitioners from as far afield as Palestine, Columbia, Iraq, Kosovo, Rwanda, Bangladesh, Sri Lanka, the US and the UK. They will meet for two days to share examples of practice, and discuss how artists and communities affected by conflict can respond through theatre.

The seminar will incorporate practical workshops, small group discussions and short presentations from practitioners. There will also be a larger public event on Friday 8 April, with formal

presentations from international guests and a performance by refugee artists based in Manchester.

James Thompson, Professor of Applied and Social Theatre, commented: "We're in the process of making contact with practitioners across the world to try to map performance projects that have taken place in war or post-war settings since 1990, including artist, community and social agency-led initiatives.

"The seminar, the first of its kind, will allow people who generally work in isolation to come together to discuss practical ideas for performance, as well as giving them an opportunity to perform. It's hoped that the seminar will help to generate detailed evidence of how performance is responding to war."

www.art.man.ac.uk/DRAMA/staff/inplaceofwar.htm

University Pioneers Targeted Tumour Treatment

The University's technology exploitation company UMIP (The University of Manchester Intellectual Property Ltd.) has awarded proof of concept funding to Professor Nicola Tirelli of the School of Pharmacy. The funds will enable a project to develop his innovative 'drug carrier' concept, which aims to provide a new form of targeted tumour therapy to cancer sufferers.

Professor Tirelli has used his expertise in the development of novel biomaterials to prepare nanoparticles

(objects smaller than 1 micron and composed of organic polymers), which accumulate in solid tumours and generate powerful chemotherapeutic agents. His approach is thought to greatly enhance the selectivity of chemotherapeutic treatments and dramatically reduce their side effects on healthy tissue - one of the greatest problems associated with current chemotherapeutic techniques.

An agreement to commercialise Professor Tirelli's work is already in place with

Medipol, a Swiss start-up company which develops applications of biopolymers for the Life Sciences industry, and this will shortly be renewed.

Dr. Carsten Laue, CEO of Medipol said: "It was very exciting to hear about the proof of concept funding as this is exactly what is required to move good patented ideas along the development process. We are pleased to have also been able to contribute to the overall costs of the programme, alongside the University's funding."

www.umip.com

News

Higher Education Minister Visits Campus



The Minister of State for Lifelong Learning, Further and Higher Education, Dr Kim Howells MP, visited the University on 10 February to meet Professor Alan Gilbert. During an intensive session, the University's scholarship proposals, widening participation initiatives, research and learning agenda were discussed, including the University's plans to invest heavily in its teaching and research infrastructure.

Whilst at the University he also visited the Manchester Museum to see some of the work being undertaken on the Government's Aimhigher project in Greater Manchester. Co-ordinator Wendy Gallagher of the Whitworth Art Gallery has implemented outreach projects in collaboration with Gallery Oldham, The Turnpike Gallery, Leigh and the Hat Works in Stockport, allowing students to work alongside practising artists and raise their awareness of career opportunities in the creative industries.

Staff invited the minister to take part in a printmaking workshop funded by the project, 'Sketchbooks into Print', with

printmaker Alan Birch and art and design students from South Trafford College. As a former Minister of the Arts and painter Dr Howells enthusiastically joined the students, in creating experimental print pieces from drawings done in the Gallery, commending the activity as an ideal way for the University to encourage educational and cultural engagement by 16-19 year-olds.

At the end of his visit, Dr Howells' praised the University's 2015 strategy, its bold vision for the future and its valuable work encouraging students from local colleges to visit and use the University's facilities.

Lunch Hour Diet

Health and Safety Services, Human Resources and the Directorate of Sport have come together to launch Switch, a new programme of 'at work' meetings from Weight Watchers.

The meetings will be held in The Well-Being Room at St. Peter's House on Oxford Road, and will begin on Friday 1 April. Weighings will take place from 12.00 — 12.30, followed by the meeting itself until 12.50.

The programme will last for six weeks (one session per week lasting one hour) and will cost just £15, as over half the cost has been covered by a subsidy from Human Resources. Attendees must be full-time members of staff of the University, at least 10lbs overweight and able to commit to attending the full six-week programme. Membership is limited to 36 places.

For more details and to book your place please call Gail Heathcote-Milner on 55985 or e-mail gail.heathcote-milner@manchester.ac.uk

 www.weightwatchers.co.uk

News



New Year Cheer in Manchester

Professor Derek Jackson and Dr Daoyi Chen of the School of Mechanical, Aerospace and Civil Engineering hosted a reception and social evening on 11 February, to commemorate the start of the Chinese Year of the Rooster.

The Tsinghua University Alumni Association celebrates Chinese New Year at the University.

The event, which took place in the Simon Building, was held for the Tsinghua University Alumni Association formed in December 2003. Over 40 graduates of the prestigious Beijing University are currently based at The University of Manchester, as postgraduate students, researchers and members of staff.

Strong ties exist between Manchester and Tsinghua, not least in the field of

Engineering. Professor Jackson holds an appointment as Guest Professor in Thermal Engineering at Tsinghua University, and a collaborative agreement has been in place for several years to carry out research on heat transfer. The project is funded by a Royal Society grant, with back up funding provided by the Chinese National Science Foundation.

In a demonstration of the close relationship between the two Universities, the agreement has recently been extended to cover nuclear energy technology. Tsinghua University is a world leader in the field and enjoys a works closely with the Nuclear Graphite Research Group at this University, headed by Professor Barry Marsden.



‘POPGROUP’ Predicts The Future

The University has just launched a new piece of software which will help local councils measure future demand for housing and other services.

The software, which is called POPGROUP, has been developed by the Cathie Marsh Centre for Census and Survey Research. “Forecasting the future is not an exact science,” said Ludi Simpson, Reader in Social Statistics who designed the software, “but it helps to have the technical evidence clearly organised, which is what POPGROUP does.

“The software gets its name from its ability to forecast population, housing and the labour force for any social group, including ethnic groups and small geographical areas. These are both priorities for local and central government,” added Ludi.

The use of census and other data to estimate fertility, mortality and migration

rates for each group is a major area of demographic research, in which the University plays a leading role.

POPGROUP is sponsored by Staffordshire, Worcestershire, Derbyshire, Buckinghamshire, Shropshire and Bradford Councils, and more than 40 organisations across the country use the software.

News

A Capital Move

The University has just launched a new office in London which can be used by members of staff visiting the capital on business.

The office is on Southampton St, which links Covent Garden market to The Strand, and can be used by any employee who is looking for a base in London while carrying out University related work. The office is about 400 metres from the Covent Garden tube station on the Piccadilly Line.

Facilities available to staff include hot-desking where staff members may check

their emails, make phone calls and print-off documents. There are also three meeting rooms, one for executive meetings of 8 or less, a second room of similar size for meeting of 8 or less but also suited to the training of staff members. Finally there is the conference suite, with a large conference room suitable for round table meeting of up to 20 people, presentations of up to 50 people and receptions of over 60 people. This comes with an adjoining break-out room.

The purpose of a London Office is to facilitate meetings of University staff in London, to allow staff to have a place with office support while in London and to proactively promote The University of Manchester in London.

For more details contact 0207 395 1910 or London-office@manchester.ac.uk

www.london-office@manchester.ac.uk

Leonardo da Vinci Funds European Staff Mobility

The North West Universities Association (NWUA), the association of the 15 North West Higher Education Institutions, is to bid for another round of funding from the Leonardo da Vinci Staff Mobility Programme on behalf of the University

The programme is the European Commission's vocational training initiative, which aims to encourage and facilitate staff mobility between European Union member states. It provides funding for academic staff to visit European HE institutions and companies to exchange competencies

and knowledge, innovative methods and best practice in vocational training.

Funding is available for visits of seven days to six weeks, and can typically include up to £300 for the cost of a return flight, a daily allowance of £90 and insurance costs of £10 per week. Please note that only staff who have not

previously participated in the programme are eligible to apply.

Stephanie Jones, Leonardo da Vinci Programme Manager at the NWUA, would be pleased to hear from anybody interested in being included in the programme. Call 234 0435 or email sjones@nwua.ac.uk for further details, or visit the web address below.

www.nwua.ac.uk/leonardo



News



Egyptology goes Global

The University's Centre for Continuing Education (CCE) has launched its first Internet-based course. The undergraduate certificate in Egyptology, the only course of its kind in the world, will now be open to students from across the globe.

The certificate began life more than 30 years ago as a taught course, before becoming a correspondence course ten years later. The idea to offer an online version was reached after careful consideration and planning, and feedback from previous participants.

The programme offers a serious, academic consideration of Egyptology, with students learning about the history and civilisation of Ancient Egypt from c3100 BC to the Arab Conquest. Subjects of study include

art, religion, funerary beliefs, literature, and the interpretation of hieroglyphs, with the programme being spread over four years.

Students on the course, who enrolled for the first time in October 2004, are given access to a host of learning materials on the Egyptology website. As well as accessing course literature they have the opportunity to build their own homepages, open and join discussion groups, participate in online tutorials and

share information and experiences. Currently the course is teaching students from Australia, Egypt, the US, Mexico, Finland, Greece, Ireland, and even a naval officer who is currently at sea.

Professor Rosalie David, the course leader, commented: "It has been a challenging and interesting exercise to develop this innovative course, but since Egyptology is a strongly visual subject which has a wide international appeal it lends itself well to Internet-based teaching and learning."

<http://www.humanities.manchester.ac.uk/centreforcontinuingeducation/>



Women in Science

Female students of Science, Engineering and Technology at the University look set to benefit from a new initiative to support their studies.

WiSET (Women in Science, Engineering and Technology) is due to be launched in April, and will help women studying these subjects through a programme of peer mentoring, guest lectures and skills training. Students taking part will also be involved in a pilot scheme of research projects which they will complete during the summer.

WiSET has been made possible thanks to a grant of £25,000 which was awarded to the University by the UK Resource Centre

for Women in Science, Engineering and Technology (SET).

Commenting on the scheme Alice Blackmore, Head of Undergraduate Studies in the Faculty of Engineering and Physical Sciences, said: "The scheme will provide much needed, focused support for women students in this Faculty, who may sometimes feel isolated. We aim to encourage them in their studies and hopefully inspire them to follow a career in science or engineering."

The proposal was put together through a collaboration between the Curriculum Development and Innovation team, the School of Chemical Engineering and Analytical Science (CEAS) and the Faculty of Engineering and Physical Sciences.

For further information contact: alice.blackmore@manchester.ac.uk, helen.dobson@manchester.ac.uk, dixie.fortune@manchester.ac.uk or patricia.m.clift@manchester.ac.uk

<http://www.ceas.manchester.ac.uk/news/title,15811,en.htm>

News

Scientists Unravel Mysteries of Egyptian Mummy



The secrets of a 2,500 year old Egyptian mummy are to be revealed, thanks to experts in the Centre for Biomedical Egyptology.

The Centre was approached by Uplands Community Technology College in East Sussex and asked if they could examine the ancient remains, which had been donated to the school by the late Dr Dick Kittermaster, a pathologist at St Thomas's Hospital in London.

Dr Kittermaster had investigated the history of the body in the late 1960s and discovered that, contrary to inscriptions on the mummy's coffin, the remains were those of a female aged about 25 and dating back to around 700BC.

Now, staff at Uplands have decided they want to learn more about their oldest pupil, and contacted Professor Rosalie David for help.

Last month, a group of sixth-formers from the school visited the University to see initial experiments being carried out on the mummy first hand, including an endoscopy, DNA testing and X-ray analysis. They were joined by children from Mossley Hollins High School in North East Manchester, which has its own forensic science club.

"The dismemberment of the mummy in the 1960s took just three hours, but our work will take several months," said Professor David. "We will carry out various tests to add as much information about the mummy's background as possible."

Dr Caroline Wilkinson, of the School of Art in Medicine, will also create a facial reconstruction of the mummy's head using the latest computer software technology.

"The information we gather will be handed to the school to establish a science project for future generations," said Professor David. "We hope this will inspire youngsters to consider science as a possible career."

A Real Song and Dance

Twenty-two staff and students from Penn State University in the US will be visiting the Schools of Music and Drama on 11 March, in a visit arranged by the Worldwide Universities Network (WUN).

The party, which includes Penn State's President Dr Graham Spanier, will enjoy a musical tour of Manchester before meeting staff and students from the University. The Penn State visitors will then give two master classes – one in dance and the other in drama.

The finale of the visit will see the students giving a performance

entitled '100 Years of Musical Theatre' in front of an audience of 350 in the Cosmo Rodewald Concert Hall in the Martin Harris Building. To round off the day, a drinks reception and dinner will take place under the newly-installed Tyrannosaurus Rex in Manchester Museum.

<http://www.wun.ac.uk>

Research



Sea Salt Slows Global Warming

Atmospheric experts Professor Tom Choularton and Dr Keith Bower from the School of Earth, Atmospheric and Environmental Sciences are examining a novel idea for delaying the effects of climate change, using a combination of clouds and sea salt.

Working with a team of leading scientists around the world, they have developed a computer simulation which shows how adding sea salt to clouds could slow global warming. The idea, conceived by Professor John Latham, an Emeritus Professor at the University, is to use clouds as natural heat shields which when injected with salt reflect more sunlight and therefore protect against the greenhouse effect.

Professor Choularton, said: "What our simulation shows is that if you artificially inject sea salt into clouds it not only increases the amount of heat which is reflected back into space, creating a cooling effect, but it also inhibits the

formation of drizzle. This means the clouds and the cooling effect last longer, as more heat is reflected."

Professor Choularton's principal role is to understand the effect artificially injecting salt will have on the clouds, in particular whether it will cause any adverse effects. This information will then be used to plan small-scale pilot projects to see how the clouds react in the field.

If the research is successful it may be possible to develop an operational system which, over a small area of the globe, would off-set global warming and reduce global temperatures.



Mums' Bone Health Study Seeks Volunteers

Dr Mourad Seif, a consultant obstetrician at St Mary's Hospital, and Dr Kate Ward of the School of Medicine's Clinical Radiology Unit are undertaking a pilot study into the healthy bone development of teenage mothers. The Unit is a multidisciplinary centre which works closely with St. Mary's and Manchester Royal Infirmary, and research into bone development and innovative new treatments is a major part of its activity.

The study has been funded by the National Osteoporosis Society, and is believed to be the first to be carried out

into the long-term effects of early pregnancy on bone health. The findings will help inform opinion on whether calcium and other mineral supplements could be particularly beneficial to younger expectant mothers.

The female skeleton contains a greater amount of calcium than the male, believed to be necessary for the demands of pregnancy and breast-feeding. As this continues to develop until the age of about 25, the study seeks to investigate how younger mothers' calcium levels are affected during and after pregnancy.

Around 70 expectant or new mothers aged 13 - 19 are needed for the study, with a similar number of 25 - 35 year old mothers being sought for comparative purposes. A third group, of non-pregnant 13 - 19 year olds to act as a control group, is also being recruited.

Volunteers will be asked to respond to a short questionnaire upon joining the study, and will be scanned up to three times to measure bone density and shape. To find out more about participating please contact Dr Ward on 275 5118 or kathryn.a.ward@manchester.ac.uk

Research

Brainpower May Help Beat Dementia

Researchers in the Centre for Integrated Genomic Medical Research (CIGMR) will be asking members of the high-IQ society Mensa for DNA samples, in what will be the world's most sophisticated study of brainpower.

The research aims to understand the link between intelligence and dementia, and will allow the team to find genes associated with intelligence and examine how they interact with each other.

"Looking at the genes in combination reduces the statistical power of the research considerably," explained Dr Tony Payton, who is leading the research. "Selecting individuals who represent the extreme end of the IQ distribution increases this power dramatically. For example, 200 volunteers with an IQ of 145 is equivalent to using 100,000 unselected volunteers."

The results of the research will complement data collected from an earlier University of Manchester study of 2,500 elderly people over the last 20 years. That research has already identified two genes associated with general cognitive ability, while work elsewhere over the past eight years has uncovered ten other 'intelligence genes'. "Combining the earlier study with the Mensa research will take cognitive genetic research to an altogether new level," Dr Payton commented.

The team is particularly interested in intelligence genes because high intelligence protects against the onset of dementias such as Alzheimer's disease. A greater understanding of the role that genes play in regulating intelligence may help in the development of new diagnostic tests and more effective



treatments to combat cognitive impairment in the elderly.

The study is awaiting final approval from the local research ethics committee, which meets on March 8. If approved, 2,000 swab kits will be sent out to North West Mensa members in a forthcoming issue of their monthly magazine, in the hope that at least 1,000 will respond.

<http://www.postgenomeconsortium.com/cigmr/>

A Little Help from their Friends



Anna Roby, an MSc student from the School of Psychological Sciences, is investigating the theory that children with imaginary friends are quicker to develop language skills and retain knowledge.

The theory is that by chatting to an imaginary companion a child becomes more practised at using language and constructing conversation, as he or she is carrying out both sides of the interaction. Children aged 4 – 11 both with and without imaginary friends are therefore being studied, to compare their ability to communicate meaning and the complexity of their grammar.

Researchers estimate that up to 25% of children have imaginary companions, particularly only- or first-born children.

They are defined as vivid, imagined characters which might be people, animals or objects, which a child believes they are interacting with in an on-going way. The friend may be 'invisible' or take the form of a toy animal or doll, and is treated as if it has a personality and consciousness of its own.

Anna also works as a Research Assistant at the Max Planck Child Study Centre, and is being supervised by colleagues Dr Evan Kidd and Dr Ludovica Serratrice. Dr Kidd said: "We are very interested in the

outcome of this study. If Anna's theories are correct they will help reverse common misconceptions about children with imaginary friends, as they come to be seen as having an advantage rather than anything to worry about."

Parents of children aged 4 – 11 with imaginary companions who are interested in being involved in the study should contact Anna Roby, on 0161 275 8588 or anna.robby@manchester.ac.uk

Feature

All Aboard For New Bus Service



Next week sees the launch of a new bus service between Piccadilly train station and the University campus – which should make travelling to work a bit easier for some members of staff.

The launch is just the latest stage in the University's Staff Travel Plan (STP) which was featured in the 24 January issue of UniLife. The STP aims to encourage more members of staff to use public transport – while helping them to save time and money in the process.

As of 14 March the new bus service will run at regular intervals stopping at 14 locations, starting at the new entrance to Piccadilly Station on Fairfield Street and ending at Grafton Street. You'll be able to recognise the buses which will feature an Oxford Road Link logo and will bear the number 147.

The service will run from 7.15am until 6.45pm Monday to Friday at a 10 minute frequency during peak times. At peak times (7.15am- 9.30am and 4pm-6.45pm), three buses will run so you shouldn't have long to wait for a ride. At off-peak times the buses will run at 15 minute intervals.

The bus will drop off at the existing stops indicated on the route plan opposite, with the exception of Sackville Street where it will operate as a 'hail and ride' service. The

service is being run by Bullocks Coaches and the buses are all single deck which are fully accessible by people with disabilities and are environmentally friendly.

Using the bus won't break the bank. A flat rate 50p single fare and a £1 day saver ticket will be available from the driver. If you think you're going to use it on a regular basis it might be best to purchase an annual season ticket which costs £150 and can be bought from Bullocks Coaches – call 0161 428 5265 between 9am and 5pm for more information.

Concessionary and student fares will also be offered and all System One ticket types (the train tickets you buy which include free bus or tram services within Zone 1) will be accepted. Staff wishing to apply for an interest free loan to purchase a season ticket should contact Human Resources. This also applies to the Metro tickets where a new 10% discount has been agreed.

Mike Stacey from the Directorate of Estates said: "It has long been recognised that a public transport link is needed to make

travelling between Piccadilly train station and the campus a lot easier. We hope that this will encourage more people to travel to work by train as at the moment, the walk from Piccadilly to the far reaches of the campus can be a bit daunting.

"The University is conscious that there are going to be many changes on the campus over the coming months that may affect people's travelling arrangements and we are committed to making sure that we help people as much as we can during this period," he added.

The bus route has been set up thanks to the efforts of a working group made up of representatives of the Higher Education Precinct (comprising of the University, MMU, RNCM, and the Central Manchester and Manchester Children's University Hospitals NHS Trust); the Greater Manchester Passenger Transport Executive and Manchester City Council.

For further information on the bus link please contact the Greater Manchester public transport information line on 0161 228 7811.



Feature

Planning and Accountability Conference 2005

The Senior Executive Team and members of the Board of Governors and the Policy and Resources Committee held a two-day residential Planning and Accountability Conference on 16 and 17 February.



The conference aimed to satisfy accountability requirements by reviewing performance over the year to date, review and update the University's strategic plan, and set priorities for the coming year to make the Manchester 2015 strategic agenda an operational reality.

The event was chaired by Norman Askew, Chair of the Board of Governors, who introduced the Conference by describing it as "the most important meeting of the year." He went on to thank members of staff and the Senior Executive Team for what has been achieved so far.

He also urged the University to continue the good work carried out since its inception in October 2004, but stressed, "Incremental improvement will not suffice. And we cannot simply ask people to work harder. I have been surprised and pleased at the hours and the dedication

that people have been putting in, but we have to find different and better ways of working."

President and Vice-Chancellor Professor Alan Gilbert addressed the Conference, a year to the day after arriving in Manchester to prepare for the establishment of the new University. He admitted that settling the new University down in an administrative sense had not been easy.

"We have had to put a lot of energy into operational management," he said. "But at a deeper level the really pleasing thing has been the rapidity with which the loyalties, relationships and structures of the two legacy institutions have been subsumed into the new University."

He added: "We have to reject status quo thinking and legacy models, except where

they were already world class. Only comprehensive step change will make Manchester one of the best universities in the world."

He reminded the Conference that the new University had a clear sense of what 'step-change' should mean. "The idea is not to emulate Oxbridge or to replicate the concentrated research virtuosity of Imperial College. Nor is it to mimic the social cachet of America's Ivy League. It is to create a genuinely new University."

Professor Gilbert reaffirmed his determination to make the University an innovative, exciting institution, which, in addition to being research-led, would be engaged with the economic, social and cultural life of its wider communities. He acknowledged that the Agenda that had been set out for achieving this was an ambitious one, but the gap analysis



confirmed that while the task ahead was a hard one, it was realistic.

One of the key themes of the two-day Conference was the Manchester 2015 goal of achieving high international standing. Professor Gilbert highlighted the need to ensure that more of our 5-rated staff and research clusters were enabled to reach genuinely 5*-rated status. He also highlighted again the importance of attracting internationally-renowned staff to the University, saying: "Failure to make such appointments will, quite simply, mean the failure of the Manchester 2015 Agenda. We may have done well even if we fail in this strategy, but we will not have reached the first rank of research universities internationally."

Another recurring theme concerned communication which, as revealed in the

recent Staff Survey, remains a major concern across many areas of the University. Professor Gilbert stressed the importance of good communication between the Board of Governors and the senior management of the University and said there was "real solidity between management and governance on the ambition of our Agenda." More broadly, he added: "The need to communicate effectively with colleagues at all levels of the University, and give them all opportunities for genuine input into decision-making, is one of the critical current challenges."

During the course of the Conference, the Board and the SET were given presentations on a range of University activities including:

- The Staff Satisfaction Survey
- The HR agenda
- Finance
- The Estates Plan
- The University website
- Faculty Plans

There was a major discussion of and a resulting series of proposed revisions to the Manchester 2015 Agenda, with a revised version due for publication in May 2005 following discussion in Schools, Faculties and by the Senate. The first draft of the University's Operational Plan was also discussed, and this will be finalised at the meeting of the Board of Governors at the end of April. This will be used to inform the plan-based, incentive-driven budgeting which is at the heart of the University's approach to implementing the Manchester 2015 Agenda.

Research



Manchester to Lead the World in Cancer Research

The University of Manchester, the Christie Hospital and the Paterson Institute have unveiled an ambitious plan to put Manchester at the forefront of international cancer research.



The new Manchester Cancer Research Centre (MCRC) will integrate the cancer research efforts of The University of Manchester, the Christie Hospital, The Paterson Institute for Cancer Research and Cancer Research UK, giving Manchester one of the largest cancer research and treatment centres in Europe.

Significant new investment - estimated at £30m to £50m is expected to be secured to fund world-class researchers, laboratories and patient research facilities, with the aim of doubling cancer research activity in the city over the next five years.

Formal agreements to be made between the parties will establish the basis, structure and governance for this integrated approach to cancer research. As part of these arrangements the Paterson Institute would become a research institute of the University, enabling a full integration of the world-class fundamental and clinical research activities of each.

This would ensure that the latest research findings on the causes of cancer are translated quickly into earlier detection methods and new treatments for patients. It would also enable laboratory scientists, clinical investigators and doctors to work collaboratively together, integrating current cancer research programmes and developing new strategies.

Professor Alan Gilbert, President and Vice-Chancellor of The University of Manchester said: "The University of Manchester welcomes this development as a crucial step towards the emergence of Manchester as one of the world's largest and most significant centres of cancer research and treatment."

Nic Jones, Director of the Paterson Institute, said: "There is a great opportunity for Manchester to be a world-leading centre in cancer research. It is essential that the Paterson Institute works closely with the University and the Christie as it

develops its research activities in the future, and I welcome the opportunity for the Paterson to be at the heart of the development of the new MCRC."

Joanna Wallace, Chief Executive of The Christie Hospital said: "This development allows cancer research in Greater Manchester to take a huge step forward. We have ambitions to provide the very best cancer services for local people and also to contribute to research of world-class standard. This partnership will allow this to happen."

Alex Markham, Chief Executive of Cancer Research UK, said: "As the largest funding partner of the proposed MCRC Cancer Research UK is extremely excited about these developments in Manchester. As long term supporters of the Christie, The Paterson Institute, and the University it is terrific to see the Manchester cancer research community taking its rightful place as an international leader."

On Your Bike!

Generous University staff and students have raised £571.11 for the Tsunami Disaster appeal by taking part in a raffle organised by employees in the Refectory.

David Collister from Vending Services was the lucky winner of the first prize - a mountain bike which was donated by Coca Cola. Two further prizes of £50 worth of shopping vouchers were won by Leanne Duffy from the Architecture and Planning Building and Internal Communications Manager Lisa McCarthy.

Ian Bernie from the Directorate of Sports Trading and Residential Services, who helped to organise the raffle said: "Thank you to everyone who took part in the raffle and donated money so generously. We had some big donations people were giving £10 and £20 notes."

Pictured are David Collister and Graham Bates, Area Account Executive for Coca Cola.



People

Keep On Running

University employees Laura Hardman and Dr Abigail Woods are busy training for the London Marathon.

Student Services Adviser Laura and Abigail, who works at the Wellcome Unit for the History of Medicine, will be pounding the streets of the capital on Sunday 17 April.

Both are raising money for charity - Laura hopes to raise £1,500 for the Samaritans, while Abigail is looking to reach a target of £2,000 for Breakthrough Breast Cancer.

It's the first time either have run a marathon, but both are confident they

will complete the course. Said Laura: "I'm not aiming for any particular time - I just want to finish it! I work as a volunteer at the Samaritans at their Oxford Road branch and all the money I raise will go towards that branch."

If you would like to make a donation please e-mail Laura at laura.hardman-2@manchester.ac.uk or Abigail.woods@manchester.ac.uk or visit their fundraising webpage at the addresses below.

The University of Manchester
Manchester
Conference Centre

MANCHESTER 2014

Special Academic Hotel Rate
£49.95 room only

Days Hotel Manchester, as an integral part of Manchester Conference Centre offers this special academic rate subject to availability.

All rooms are en-suite, and have TV, direct dial phone and internet access.

University departmental codes are accepted

For reservations, please ring
0161 955 8062 (or 68062 internal)
Quoting "Academic Specials"

For further details, contact
Manchester Conference Centre
Sackville Street, Manchester, M1 3BB
Email: daysinn@manchester.ac.uk
www.meeting.co.uk/days/hotel

DAYS HOTEL

AA

Rates and conditions: The special rate applies only to bookings of no less than four nights and is subject to change without notice.

 A photograph showing the interior of the Days Hotel Manchester, featuring a modern lounge area with a large window, a reception desk, and a red patterned chair.

www.justgiving.com/laurahardman www.justgiving.com/abigailwoods

In the Community

On 1 March a group of Year 8 pupils from the 'Gifted and Talented' cohort at Saddleworth School, Oldham visited the School of Chemistry to interview Head of School Professor Paul O'Brien. The interview was part of a project the group is undertaking as part of the 'Science Across the World' initiative, run by the Association for Science Education.

One of the project's requirements is that pupils interview somebody in a key role in a field of science, and the school's existing relationship with the University prompted the pupils to get in touch.

Thousands of schools around the world are taking part in the scheme, which allows pupils to exchange information, opinions and ideas on a wide variety of science topics and access free resources in several languages.

<http://www.scienceacross.org>



A Question of Chemistry



The initiative aims to develop student interest in science as well as key skills in communication, languages, ICT, team-working, problem-solving and evaluation.

After interviewing Professor O'Brien the pupils were taken on a tour of the School of Chemistry by one of its postgraduate students; for many of them it was their

first visit to a university department.

"The visit has been a great success," said teacher Margaret Hughes. "Not only have the children learnt a lot about Professor O'Brien and the work of the School of Chemistry, but they've had a taste of daily life in a University which we hope will whet their appetite for higher education."

Life's a Beach!

Students from the University took part in a huge beach clean at Morecambe Bay last week. The event was organised by the Business, Careers & Community Division (BCCD), in partnership with colleagues from 15 other higher education institutions from across the region, and was supported by more than 50 local MPs.

BCCD's Andrea Rannard, who co-ordinated the University's participation in the event said: "The beach clean was devised as a way for all HEIs in the North West to work together on a large volunteering event, as well as raise awareness of the positive impact that students make through volunteering."

The BCCD manages Manchester Student Volunteers, a group which offers a wealth of volunteering opportunities and information to students and has been participating in a number of events as

part of National Student Volunteering Week. Other activities have included the Oxford Road Litter Pick (part of the Manchester City Council's Challenge Manchester initiative) and a panel session featuring staff from the Co-op, community action groups and BCCD staff who have volunteered in their spare time.

For more information on student volunteering opportunities please email andrea.rannard@manchester.ac.uk or visit the website below.

<http://www.careers.manchester.ac.uk/making/volunteering/>

Students

Team Working Awards

Entries are now due for the seventh annual Enterprise Student Team Working Awards.

The awards, which are sponsored by PriceWaterhouse Coopers, are an opportunity to recognise and reward the importance of student team work at the University.

Students who have completed a group project (involving three or more students) as part of their undergraduate or postgraduate study during the academic year 2004-05 are

eligible to enter. The winners will receive cash prizes of up to £500. There is also an extra curricular category with the same cash prizes for both undergraduate and postgraduate students.

Applications need to be submitted before Thursday 12 April and forms can be downloaded from the website below. For further information contact Marcia Ody, Senior Students as Partners Officer, on 275 3299.



http://www.intranet.man.ac.uk/rsd/ci/Stud_Ent/TWAwards.html

Knickers to Tradition

Forget bowls of nuts or packets of crisps, fashion students from the Textiles and Paper group in the School of Materials have up with an alternative accompaniment to the traditional pint of beer – frilly knickers.

The eight students, known as the Bonita Girls, are all studying Textile Design and Design Management at the University, and have set up underwear company Bonita Knickers as part of their final year project.

In a bid to publicise their range the Girls have come up with the idea of targeting pubs and bars – offering customers the chance to buy custom-designed knickers to accompany their drinks.

On 16 February they set up shop in the 'IF' bar in the trendy Deansgate Locks area. Examples of the range were strung across the ceiling on a washing line, and posters brandishing the company's slogan 'You'll want to hang out your washing' were displayed.



Caption: The Bonita Girls: Megan Sanders, Katrina Milton, Laura Foulser, Helen Williams, Holly Arnold, Georgina Wood, Emma Brown and Alice Wakenshaw.

The Girls have also hit Browsers Coffee Shop in the Sackville Street Building and other University sites, using similar tactics to promote their vintage-style underwear.

Bonita Managing Director Megan Sanders, said: "There seems to be

something about people once they've had a drink. We have tried to sell the knickers in other places and guys especially won't come near the stall because they are embarrassed, but give them a beer and they are straight over – it's great for business!"

www.bonitaknickers.co.uk

What's On

The Whitworth Art Gallery

DISPLAYS/COLLECTIONS

Truce New Sculpture & Drawings by Shirley Diamond, to 10 April

Beauty and the Beast New Swedish Design, 26 February - 24 April
From wave-shaped walls of lighting and sculptural glass to rat-gnawed wallpaper and hairy ceramics, Beauty and the Beast explores the intriguing duality of contemporary Swedish design.

The Wages of Sin and Virtue's Reward Moral Prints in the Age of Dürer, to 6 November
Woodcuts, engravings, etchings and illustrated books from the collections of the University of Manchester in the Whitworth Art Gallery and the John Rylands Library.

This exhibition highlights the moral messages communicated to people of the late Middle Ages and early Reformation through the medium of prints published in Northern Europe.

TOURS AND EVENTS

Every Saturday at 2pm there is either an Exhibition Tour or an Eye-Opener Tour.

Shirley Diamond - Curator's Tour, Sat 12 March, 2pm, FREE

CONCERTS

Kaja Aadne / cello, Programme will include Ligeti and Schubert; Sunday, 13 March, 3pm. FREE

Martindale Quartet, Programme will include Mozart, Sunday, 20 March, 3pm. FREE

SPECIAL EVENTS

Made in Manchester

Saturday 9 April, 2.00 pm.

A series of three talks by Manchester-trained designers: Claire Norcross, Design Manager (Lighting) at Habitat: Tickets for each lecture £3. Contact the Gallery for further details and tickets. Further speakers and dates to be confirmed.

Design Unwrapped

Saturday, 23 April, 12 noon

Developed in partnership with the Liverpool and Manchester Design Initiative, this an event for those who want to learn more about contemporary trends in interior and 3D design. There will be a tour of the exhibition with the curator of Beauty and the Beast and author of several books on 20th century post-war design, Lesley Jackson. Another speaker (tbc) will offer valuable insights into commissioning work from contemporary design-makers. All participants will receive a map locating studios and independent shops selling contemporary work, to visit that weekend or at a later date. Tickets £5 from the Gallery: 0161-275 7450.

Whitworth Art Gallery, Oxford Road, 0161 275 7450 www.whitworth@manchester.ac.uk

Opening hours Mon to Sat 10am - 5pm, Sun 2pm - 5 pm FREE Admission

Gallery Café 0161 275 7497 The café sells a selection of drinks and light meals.

Gallery Shop 0161 275 7498 The bookshop stocks a range of art and design books, cards and gifts.

Collection Exhibitions Archive now online. The Whitworth's online 'Collections Catalogue' now allows you to browse and search selected exhibitions held at the Gallery over the past 10 years. Follow the link from homepage at: www.manchester.ac.uk/whitworth

Gig Guide Manchester Academy 1, 2 & 3

Mon 7 Mar
The Donnas

Wed 9 Mar
Hatebreed

Thurs 10 Mar
Ray Lamontagne

Fri 11 Mar
The Spin Doctors

Sat 12 Mar
Bright Eyes
Hanky Park

Sun 13 Mar
The Raveonettes +
Dogs + Boher
Rebellion

Mon 14 Mar
Le Tigre

Tue 15 Mar
LCD Soundsystem

Wed 16 Mar
Dirty Sanchez

Fri 18 Mar
ASIA + Barclay James
Harvest + Dare

Sat 19 Mar
Whole Lotta LED

Sun 20 March
Mull Historical Society

Mon 21 March
The Blood Brothers

Tue 22 March
Eighteen Visions

Wed 23 March
The Dwarves

Mon 4 April
The Money Suzuki

Wed 6 April
Porcupine Tree

Thurs 7 April
36 Crazy Fists

Fri 15 April
Atreyu

Sat 16 April
Durutti Column

Students' Union Oxford Road, Manchester, M13 9PL

Tickets from: Piccadilly Box Office, easy Internet Cafe, (c/c) 0871 2200260

Online @ www.manchesteracademy.net Royal Court (Liverpool) 0151 709 4321 (c/c)

Students' Union 0161 275 2930

Contact Theatre

Manchester Academy

PALAUER FESTIVAL - MANCHESTER BABEL

Twenty plus young people, twenty plus languages, twenty plus experiences. Students of Manchester Academy tell their stories in theatre, music and dance.

Wed 9 Mar 2005, Free

Quarantine and Manchester University
Drama Department

PALAUER FESTIVAL - EVERYWHERE

Designed by Simon Banham

Everywhere is a new piece of theatre devised by Quarantine with students from the University of Manchester Drama Department. It investigates the relationship between the individual and the crowd, and plays with the language of theatre as both an intimate, personal encounter and as a shared experience, en masse. The piece uses live music, choreography and text based upon the personal histories of the performers.

NB Everywhere will be performed at the John Thaw Theatre, Manchester University
Wed 16 Mar 2005 - Fri 18 Mar 2005, £8/5

Manchester University German Department

PALAUER FESTIVAL - Frühlings Erwachen (Spring Awakening)

Sex, death, parents, teenage pregnancy, peer pressure and examination success. Wedekind's extraordinary tragedy of adolescence – written in 1891 – tells the stories of a group of young people on the cusp of childhood and adulthood as they struggle with their first sexual feelings and experiences in a hypocritical and repressive adult world. (Performed in the original German).

Thu 17 Mar 2005 - Sat 19 Mar 2005, £6/4

The David Glass Ensemble

PALAUER FESTIVAL - Disembodied

David Glass returns to Contact celebrating 25 years of innovative theatre with his new show, Disembodied. David performs accompanied by Jonathan Cooper in a surreal vaudeville. Savagely poignant, this is the battle between time and the body. Watch a master at work as the performance moves from the manically comic to deeply mournful and creates its own devastating and disturbing theatrical world.

Thu 17 Mar 2005 - Sat 19 Mar 2005, £9/6

Contact Theatre, Oxford Road, Manchester
Tickets/Info: 0161 274 0600

For information on other events please visit our website www.contact-theatre.org

A limited number of tickets are available from just £4 on the day from the Ticket Office between 11am - 4pm daily.

International Society

THEATRE AND MUSIC

For details about the availability of tickets for various theatre and music performances, please visit our website.

TRIPS

Sat 12 March

Betws-y-coed and Portmeirion Village

Sun 13 March

Whitby and Robin Hood's Bay

Sat 19 March

Warwick Castle and Warwick

Sat 26 March

Alton Towers Theme Park

Fri 25/Sun 27 March

London

International Society,

327 Oxford Road (next to Krobar)

0161 275 4959

www.internationalsociety.org.uk

Open: Monday-Friday 9.30am - 5pm

Jodrell Bank

The facilities at Jodrell Bank are going through a period of redevelopment. The Visitors Centre currently has a café, an exhibition space and a 3D theatre open, and visitors can still explore the various trails and the natural habitats of the Arboretum's 35 acres with its 2,000 species of trees and shrubs and National Collections. In January 2004 Jodrell Bank completed a 180 degree observational pathway close to the base of the world famous Lovell radio telescope.

Jodrell Bank Science Centre & Arboretum
Macclesfield, Cheshire 01477 571339
www.manchester.ac.uk/jodrellbank

John Rylands Library

The John Rylands Special Collections Library, Deansgate, will be closed for a period of approximately 2 years, until 2006, for essential refurbishment and the construction of a new visitor and interpretative centre. Access to all the special collections is available through the main University Library on campus. A Special Collections Reading Room is open on Floor Purple Four, Monday to Friday 10am - 5.15pm and Saturdays 10am-1pm. Readers may find it helpful to contact us in advance on 0161 275 3764. Further information can be found on our website

www.rylibweb.manchester.ac.uk/spcoll

Tabley House

The University of Manchester's Stately Home. Small conference and meeting rooms available year-round. Licensed for weddings and baby-naming ceremonies. The house is now closed to the public until 25 March 2005.

Tabley House

Knutsford, Cheshire, WA16 0HB
Tel: 01565 750151 www.tableyhouse.co.uk
email inquiries@tableyhouse.co.uk

Chaplaincies

St Peter's House Chaplaincy

SUNDAY WORSHIP
10am Group Work
11.15am Morning Worship
6.30pm Evening Worship (Term-time only)
FOYER 10am-4pm. An area where students and staff can relax and meet friends. A tea/coffee machine is available.
Precinct Centre 0161 275 2894
sph.reception@manchester.ac.uk

Avila House RC Chaplaincy (next to the Holy Name Church)

Mass Times
Mon - Fri 1.05 pm (term-time only)
Oxford Road 0161 275 6999/273 1456

Chaplains also available Monday - Friday
Floor B, Room B25, Renold Building
0161 200 2522

Mosque: Sackville Street Building
Prayer Room: Renold Building B26

Manchester Museum

Fridays (during term time), 11am -12 pm

Magic Carpet

Storytelling and story making for the under fives.

PREBOOKED FAMILY EVENTS

(0161 275 2648)

Wednesday 23 March 12.30-1.30 pm

The Importance of Creepy-Crawlies: FREE

Not everybody likes them, but insects are essential to our existence. Find out why the Earth cannot sustain human life without them. Suitable for ages 13 and over.

Wednesday 30 March 12.30-1.30 pm

Stupendous Spiders: FREE

Find out why spiders are such intriguing creatures with highly individual life styles. Discover more about their habits and be surprised by their beauty and variety/ Suitable for ages 13 and over.

Saturday 23 April 1.30-3.30 pm

A Dip in the Mersey (£1 per person)

Explore the River Mersey with the Mersey Basin Trust: Discover what eats what in the river and create your own incredible creatures.

DROP-IN FAMILY EVENTS

(£1 per child, unless otherwise stated. For group bookings please call 0161 275 2648. Children must be accompanied by an adult).

Saturday 12 March, 11-3.00 pm

Make Sense of Your Brain FREE

What is your brain doing inside your head? Why do we have two eyes? Celebrate Brain Awareness Week and National Science Week with scientists from the University of Manchester. Take part in hands-on activities, quizzes and experiments. Talk to young researchers about the brain and behaviour.

Saturday 19 March, 12-4pm

From Lab to Layman FREE

A chance for you to find out about the exciting work that the University's scientists do and to tell the academics what you think. There will be awards for the most interesting, fun and educational presentation. Play your part and pick a winner.

Monday 21 March to Friday 2 April, 11am-4pm

Life Through Time FREE

A series of art and craft sessions giving you the opportunity to develop a new exhibition exploring the earth and our place in it, to be shown from 16 April.

Sunday 20 March 2.30 pm

The Grand Tour FREE

Join Graeme Pye, our 'Victorian' gentleman guide, on this special tour of the Museum. Meet at reception

Tuesday 22 March 2pm-4pm

Meet the Curator FREE

Saturday 2 April 1.30-3.30 pm

The Natural World FREE

Find out about the range of precious materials that come from animals. What have people used them for? How can you recognise and distinguish them? Please bring along any items of your own to find out what they are made from. With expert advice from a museum Conservator.

All drop-in events cost £1 per child, unless otherwise stated. For group bookings please call 0161 275 2648. Children must be accompanied by an adult.

Manchester Museum Oxford Rd, Manchester
0161 275 2630, www.museum.man.ac.uk
Open: Mon-Sat 10 - 5pm; Sun 11- 4 pm.
FREE Admission. www.manchester.ac.uk/museum

Music at Manchester

THE LINDSAY EVENING CONCERTS

7.30 pm in The Cosmo Rodewald Concert Hall

Friday 18 March

Mozart *Quartet in C K.465 'Dissonance'*

Tippett *Quartet No.5*

Schubert *Quartet in G D.887*

Friday 15 April

Haydn *Quartet in D Op.76 No.5*

Bartok *Quartet No.2*

Beethoven *Quartet in F Op.135*

CHORAL AND ORCHESTRAL CONCERTS

All concerts begin at 7.30 pm in The Cosmo Rodewald Concert Hall, unless otherwise stated.

Saturday 12 March

7.30pm in the Whitworth Hall, Oxford Road

The University of Manchester Chorus

The University of Manchester

Symphony Orchestra

Stephen Williams *Conductor*

Britten *Paul Bunyan*

A concert performance of Britten's entertaining opera based on W.H. Auden's fantasy-myth about the lumberjacks of North America and the struggle between Man and Nature This concert is part of The Manchester Choral Festival.

Wednesday 16 March

Ad Solem

Marcus Farnsworth *Conductor*

Soloists *tbc*

Bach *St John Passion*

Saturday 19 March

The University of Manchester Wind Orchestra

Philip Robinson, Gareth Parry *Conductors*

David Thornton *Euphonium*

Christopher Marshall *Aue!*

Eric Whitacre *Sleep*

Percy Grainger *Irish Tune from County and Shepherds Hey!*

Pete Meechen *Three Stories - Three Worlds*

Concerto for Euphonium and Band

Sainte-Saens *Orient et Occident Op.25*

Frank Tichell *Sun Dance*

Philip Sparke *Dance Movements*

Saturday 16 April

The University of Manchester String Orchestra

Simon Lloyd *Conductor*

Lully *Le bourgeois gentilhomme: Menuet*

Hindemith *Five Pieces for Strings*

Tippett *Concerto for Double String Orchestra*

THE WALTER CARROLL LUNCHTIME CONCERTS AND RECITALS

1.10pm Cosmo Rodewald Concert Hall

Thursday 10 March

Neil Heyde *Cello*

MANTIS (Manchester Theatre in Sound)

presents a programme of mixed electroacoustic works for Cello.

Thursday 17 March

The Lindsays

Smetana *Quartet No.2 in D minor*

Ravel *Quartet in F*

Thursday 14 April

Geoffrey Duce *Piano*

Beethoven *Sonata in G Op.31 No1*

John Casken *The Hounting Bough*

Liszt *Transcriptions*

DEPARTMENT CONCERTS

7.30pm The Cosmo Rodewald Concert Hall FREE

Friday 22 April

Composers' Concert

New works by student composers from the Department of Music

School of Music and Drama

Bridgeford Street, 0161 275 8950/1
www.manchester.ac.uk/music



Seminars

Monday 7 March

Institute of Innovation Research: "Terrorism and counter-terrorisms: science and technology policy issues". Andrew James (Manchester). 4pm, Room 10.05, Harold Hankins Building, Precinct Centre. Tea and coffee available from 3.45pm.

Social Anthropology: "The power of powder: multiplicity and motion in the divinatory cosmology of Cuban Ifá". Martin Holbraad (UCL). 4.15pm Room 4.7 Roscoe Bldg. (Refreshments in Room 5.1 at 4pm).

Tuesday 8 March

CCSR: "Census-taking 2011 - a local authority view". Sheila Ritchie (Manchester City Council). 4pm, 2nd Floor Crawford House, (entrance via Booth St East).

Manchester Medical Society SURGERY: AstraZeneca Trainees' Prize Papers. 6.30pm, Chancellors Conference Centre.

NPCRDC: "The Sharing Healthcare Project in Australia". Prof Elizabeth Kendall (Griffith University). 2pm, Seminar Room 2, 5th Floor, Williamson Bldg.

CHSTM Seminar: Title to be announced. Ian Fairlie (CERRIE). 4pm, Room 2.57, Simon Building.

Planning and Landscape: "Planning and climate change". Elizabeth Wilson (Oxford Brookes University). 4pm, Hanson Room, Humanities Bridgeford Street.

Wednesday 9 March

School of Mathematics: "How to pick up an object". Elmer Rees (Edinburgh). 2pm, Room C019, Maths and Social Building, Sackville Street.

Life Sciences AstraZeneca Seminar: "Use of proteomics to study chromosome structure and segregation". Bill Earnshaw (Edinburgh). 12pm, LT1, Stopford Bldg.

Sociology Seminar: "The changing face of law and why it matters to us all". Helena Kennedy. 4pm, Room 3.51 Williamson Bldg.

Manchester Medical Society PATHOLOGY: Amgen Trainees' Prize Evening. 5.30pm, LT2, Stopford Bldg.

Theoretical Physics: "Low temperature decoherence of qubit by environment". Igor Lerner (Birmingham). 2pm, Room J9, Sackville Bldg.

Thursday 10 March

World University Network Arctic Climate and Environment Access Grid Meeting: "Focus on Deeptime". Chaired by Henk Brinkhuis. 5-6pm (London time), Video Suite, Ground Floor, Kilburn Bldg. Open to all WUN access grid nodes. To book a place email: dee.gilmore-stewart@manchester.ac.uk

Imaging Science and Biomedical Engineering: "What's the point of myocardial perfusion imaging?" Dr R A R Couden (Addenbrooke's and Papworth

Hospitals). 5.15pm, LT3 Stopford Bldg.

Manchester Medical Society ANAESTHESIA (joint meeting with the Liverpool Society of Anaesthetists). Speakers: Dr P Cartwright, Dr D Saunders and Mr R Halls. 2pm (buffet lunch), The Hanover Hotel, Warrington. To attend please register with Margaret.Trowler@whnt.nhs.uk.

British Computer Society: "Legal Risk Management". Rachel Burnett. 6.15pm buffet, 6.45pm Lecture. Renold Bldg, off Sackville Street. Further details: www.bcsmanchester.org.uk.

Monday 14th March

Institute of Innovation Research: "Moving public engagement in S&T upstream: deliberative mapping, participatory technology assessment of xenotransplantation and addressing the kidney gap". Malcolm Eames, (Policy Studies Institute). 4pm, Room 10.05, Harold Hankins Building, Precinct Centre (refreshments from 3.45pm).

Social Anthropology: "Thinking through Kings: custom and constitutionalism in contemporary Swaziland". Sari Rosstell (Goldsmiths). 4.15pm Room 4.7 Roscoe Bldg. (Refreshments in Room 5.1 at 4pm).

Tuesday 15 March

CCSR: "The need for timely, complex health intelligence". Iain Buchan (Manchester). 4pm, 2nd Floor Crawford House, (entrance via Booth St East).

School of Nursing, Midwifery and Social Work Research Forum: "Rapture, rancour and a modicum of redemption: a brief history of the symphysiotomy operation from 1777 to the present time". Janette Allotey. 12.30pm, COPE Room, Coupland 3 Bldg.

Manchester Medical Society IMAGING Mini-Symposium: "Team work in radiology". Speakers: Dr T Cleveland and Dr H-U Laasch. 6pm, Postgraduate Health Sciences Centre, MRI (buffet from 7.45pm £5 payable in advance).

NPCRDC: "A sustainable leader network". Tara Catalano (Griffith University). 2pm, Seminar Room 2, 5th Floor, Williamson Bldg.

CHSTM Seminar: "The many deaths of Lord Salisbury's gardener: historical cultures of electricity and risk". Graeme Gooday (Leeds). 4pm, Room 2.57, Simon Building. All welcome.

Cultural Theory Institute: "Culture and spectacle". TJ Clark (University of California at Berkeley). 5pm, Ground Floor Lecture Theatre, Humanities Lime Grove Bldg. Reception to follow. For further details or to book a place please call 58997 or email: cti@man.ac.uk

Wednesday 16 March

School of Law European Matrix Seminar: Title tbc. Prof Michael Dougan (Liverpool). 2.15pm, Room 3.07, Williamson Bldg.

Sociology Seminar: Chris Perriam in conversation with Monica Pearl: "Queer Spanish Cultures (Gender, Sexuality and Culture New Exchanges)". 4.30pm, Room 3.51 Williamson Bldg.

School of Physics and Astronomy Schuster Colloquium: Inaugural Lecture. Prof Albert Zijlstra (Manchester). 2.30pm, Bragg Lecture Theatre, Schuster Laboratory.

School of Materials: "Anti-inflammatory approaches to tissue engineering". Prof John Haycock (Sheffield). 2.15pm, Room D13, Manchester Materials Science Centre.

Life Sciences AstraZeneca Seminar: "EGF receptor mutations in human lung cancer". Jeffrey Settleman (Massachusetts General Hospital). 12pm, LT1 Stopford Bldg

World University Network Green Chemistry Video Seminar: "Looking at collaborative research into the use of waste biomass for the sustainable manufacture of chemicals". 5-6pm (London time), Video Suite, Ground Floor, Kilburn Bldg. To book a place email: dee.gilmore-stewart@manchester.ac.uk

Thursday 17 March

Manchester Medical Society PAEDIATRICS: "Child health old and new: an exploration of current practice in managing acute and chronic childhood disease and problems". 12.30pm Lunch, 1.30pm. Education Centre, Royal Bolton Hospital.

Manchester Medical Society PUBLIC HEALTH FORUM: "Women, transport and health". Prof K Hamilton (East London). 6pm, LT4, Stopford Bldg

School of Chemical Engineering and Analytical Science: "Waiting". Dr Dominic Rhodes (BNFL). 12pm, Room JC63/64, C Floor, The Mill (refreshments served).

Tuesday 22 March

NPCRDC: "Beyond self interest: Financial incentives and internal motivation". Prof Martin Marshall (Manchester). 2pm, Seminar Room 2, 5th Floor, Williamson Bldg.

British Computer Society: "The Ferranti Sirius". John Fiest. 5pm for 5.30pm, Museum of Science and Industry, Liverpool Road.

Tuesday 5 April

NPCRDC: "Doctoring as dirty work: an alternative view of the workforce crisis in UK General Practice". Mike Gavin (Rusholme Academic Unit). 2pm, Seminar Room2, 5th Floor, Williamson Bldg.

Wednesday 6 April

World Universities Network Horizons in Earth Systems Video Seminar. Speakers: Richard Freely and Chris Sabine (Washington and NOAA). 5-6pm (London, Video Suite, Ground Floor, Kilburn Bldg. To book a place email: dee.gilmore-stewart@manchester.ac.uk

Noticeboard

Monday 11 April

Social Anthropology: "Embodied histories: palace processions masking and memory in the Cameroon Grassfields". Nicolas Argenti (Brunel). 4.15pm Room 4.7 Roscoe Bldg. (Refreshments in Room 5.1 at 4pm).

Tuesday 12 April

CCSR: "'Lebenslagen' and social change: a multidimensional and micro perspective in social reporting". Christian Brand. 4pm, 2nd Floor, Crawford House (entrance from Booth St East). All welcome.

CHSTM: "Not just naughty: 50 years of stimulant drug advertising". Ilina Singh (LSE). 4pm, Room 2.57, 2nd Floor, Simon Bldg.

NPCRDC: "Where does somatisation happen? In the psyche or the surgery?" Prof Peter Salmon (Liverpool). 2pm, Seminar Room 2, 5th Floor Williamson Bldg.

Wednesday 13 April

TRDN Seminar: "Writing to reach you. How do we communicate with students?" A seminar convened by Dr Bill Hutchins, led by a group of current students from the Faculty of Humanities on the outcomes of a pedagogic centre funded project to investigate student responses to Faculty distributed literature. 1.30pm, Room S3.1, Humanities Lime Grove.

Transport Seminar: "An academic's viewpoint". Prof Les Lumsdon (Central Lancs). 5.30pm, Cordingley Lecture Theatre, Humanities Bridgeford St

School of Materials: "Wear of alumina/SiC nanocomposites Part II: The Matrix Reloaded?" Dr Richard Todd (Oxford). 2.15pm, Room D13, Manchester Materials Science Centre. All welcome.

Thursday 14 April

Chemical Engineering and Analytical Science: "Application of molecular modelling techniques to problems in particle and interface science". Prof Kevin Roberts (Leeds). 12pm, Room JC63/64, The Mill (refreshments served).

Monday 18 April

Social Anthropology: "Separating and containing people and things in Mongolia". Rebecca Empson (Cambridge). 4.15pm, Room 4.7, Roscoe Bldg. (Refreshments in Room 5.1 at 4pm).

Tuesday 19 April

British Computer Society: "Whatever happened to virtual reality?" Prof Robert Stone (Birmingham). 6pm, Weston Bldg, Sackville Street. Further details: www.bcsmanchester@org.uk

CCSR: "Private lives and public policies". George Duncan (Carnegie Mellon University). 4pm, 2nd Floor, Crawford House

(entrance from Booth St East). All welcome.

CHSTM: Title to be announced. Rosemary Fitzgerald (SOAS). 4pm, Room 2.57, 2nd Floor, Simon Bldg.

NPCRDC: "Qualitative study to understand the reasons for poor uptake of Cardiac rehabilitation services in the South Asian population in East Lancashire". Umesh Chauhan (Manchester).

Thursday 21 April

Chemical Engineering and Analytical Science: "Waiting". Simon Black (AstraZeneca). 12pm, Room JC63/64, The Mill (refreshments served).

Italian Studies: Title to be announced. Prof Mair Parry (Bristol). 4pm, Room W3.13, Humanities Lime Grove.

Monday 25 April

Social Anthropology: "Irish DNA: geographies of relatedness in geneticised genealogy". Catherine Nash (Queen Mary College, University of London). 4.15pm, Room 4.7, Roscoe Bldg. (Refreshments in Room 5.1 at 4pm).

Tuesday 26 April

CCSR: "What's the latest research idea at CCSR? A lightning seminar. 4pm, 2nd Floor, Crawford House (entrance via Booth Street East).

CHSTM: Title to be announced. Bertrand Taithe (Manchester). 4pm, Room 2.57, 2nd Floor, Simon Bldg.

NPCRDC: "Developing practice-based commissioning in the NHS: lessons from the experience of independent Practitioner Associations in New Zealand." Judith Smith (Birmingham). 2pm, Seminar Room 2, 5th Floor, Williamson Bldg.

Wednesday 27 April

World Universities Network Bioinformatics Video Seminar: "The proteome and the metabolome". Prof Janet Thornton (European Bioinformatics Institute). 5-6pm (London time), Video Suite, Ground Floor, Kilburn Bldg. To book a place email: dee.gilmore-stewart@manchester.ac.uk

Thursday 28 April

World Universities Network Green Chemistry Video Seminar: "Selective extractions from biomass using green chemical techniques". 5-6pm (London time), Video Suite, Ground Floor, Kilburn Bldg. To book a place email: dee.gilmore-stewart@manchester.ac.uk

The Politics of Religion in French History

School of Arts History and Cultures
"The Politics of Religion in French History"
A celebratory lecture by Prof Joseph Bergin, LittD, FBA Wednesday 9 March, 5.30pm, Bragg Lecture Theatre, Martin Harris Building, Coupland St (followed by a wine reception). All welcome

Manchester University School of Law Legal Advice Centre

The Legal Advice Centre is currently taking appointments for the beginning of October onwards. The Centre operates during term-time and provides free, legal advice in strictest confidence to both students, staff and members of the public. Clients are advised by law students supervised by local lawyers and professionally qualified teaching staff.

Precinct Centre, Oxford Road. Opening times: Mon - Fri 10am - 2pm

Tel: 0161 275 7977. Fax: 0161 275 7976. Email: free.legal@manchester.ac.uk

Sherman Lectures 2005

"Rethinking the Jewish World for the 21st Century". Speaker: Prof Barry A Kosmin 5.15pm, Humanities Lime Grove Lecture Theatre.

Mon 7 March
Lecture 1: "Zachor (Remember): From Antisemitism to Judeophobia".

Tuesday 8 March
Lecture 2: "Kehilla (Community): Jewish Identity and Continuity".

Wednesday 9 March
Lecture 3: Kibbutz Galuyot (Return of the Exiles): Israel as a Multicultural Society".

Thursday 10 March
Lecture 4: Masoret (Tradition, Chinuch (Education), Tarbut (Culture): The Jewish Cultural Renaissance".

These lectures will be preceded by the Community Sherman Lecture on Sunday 6 March on "Triumph, tragedy and transformation: the Jewish experience 1905-2005", 8pm, Mamlock House (ring 0161 720 8721 for confirmation).

Classifieds

ACCOMMODATION TO LET

Withington. Short term solution. 1 rm + box rm to let for 2 mnths from Sept. Rent neg. 0161-434 6139.

Bramhall/Cheadle Hulme. F/F 2 bed Bungalow, GCH, newly dec throughout. New Combi boiler, microwave, auto washer etc. Very comfortable & cosy. Small pleasant gdn f & r. Parking for 2/3 cars. Extremely sought after loc. Close to bus/train to Stockport/M/cr. Prof staff only. 0161-485 3112.

Victoria Park. Spac f/f luxury 2 bed apart. Walking distance to Univ. Open plan liv rm, laminate flrs throughout. French windows onto grounds, parking, w/dryer, d/washer ch. £650pcm. 0161-256 1173.

Didsbury Village. Comfortable 2 bed Victorian Cottage in quiet cul-de-sac for rent for 6 mnths initially, poss longer. Suit visiting academic couple. F/F & mod with gch, dble glazed & a mod alarm. Close to shops & transport. No pets & non-smokers only. £695pm + bills & dep. (27)54003 or 07717 171 779.

Spac 2 bed f/f s/c 1st flr flat in quiet safe residential area close to public transport. Suit staff or pg. £525pcm inc water rates. 0161-431 4897 or email: voirrey@ntlworld.com

Fallowfield. Dble rm in beautiful 3 storey townhse. New kit, f/freezer, w/machine. Hse recently dec, 2 bathrms, 2 mins walk from bars & cafes. Laminate flooring & new carpet throughout. £70pw. 07718 786 787.

Withington. Lrge dble bedrm to let in big airy 2 bed flat sharing with friendly 28yr male acad. D/G, f/f, gch, lng, quiet loc, gd public transport. £260pcm + bills. 07855 841 818.

West Didsbury. Nice hse with 3 bedrms, study & cellars. F/F with alarm, d/washer, w/machine etc. Close to shops, restaurants, bars & transport. No pets & non-smokers only. Would suit family, couple or 3 sharing. £795pcm + bills. 07931 556 115.

Sports City. Fab 2 bedrm f/f apart. 1 en-suite, secure parking, overlooking City of Manchester Stadium. Close to all amenities & 10 mins from city centre. Avail beginning of March. Would consider renting on weekly or monthly basis. £625pcm. 07748 966 896 or email: den.al@virgin.net

Stretford. F/F 2 bed semi close to Chester Rd, Metro & Arndale. 2 reception rms, kit, bathrm, w/c, 2 beds & usable attic space. GCH, d/g, mixer shower, all mod cons, alarm, gdn f & side, 1 car driveway. Avail end of April, poss sooner if reqd. £550pm + all bills. 07957 360 491.

Hulme 2 dble bedrms avail in prof hse share. 10 mins walk from campus. £260pcm inc of bills. 07932 631 110 or email: rajinder.dudrah@manchester.ac.uk

HOLIDAY ACCOMMODATION

Puerto del Carmen, Lanzarote. Large stylish apart. Sleeps up to 5. Both dble bedrms en-suite. Balcony overlooks beach & sea. From £245pw. Special prices for families. www.casapalmeras.co.uk

Languedoc-Roussillon. French village hse to let in spectacular loc. Walks, mountains, rivers, wine in abundance. 30 mins from coast, sleeps 4-6. 07985 168 099 or email from www.geocities.com/roquebrun_let

Tuscany holiday cottage to let. Superb setting near mountains. Lrge gdn, air conditioning. Florence, Siena, Arezzo easily accessible. Ideal for walking, sight-seeing, museums, restaurants, wine tasting, swimming & much more. 0208 699 8883. Details and photos on website: http://freespace.virgin.net/gp.ck/ Email: gp.ck@virgin.net

Andalucia-Gaucin. Beautiful white village, uniquely designed villa, built as 3 apart & 2 cottages with central courtyard & pool. Sleeps 2-13. Breathtaking views to Gib & N Africa. 07801 341 856 or www.thespanishvilla.com

Georgian Country house on Shropshire/Welsh border. About 1 hr from Manchester. Private gdns, lovely trees. Sleeps 16 in 8 bedrms, 6 bths. Luxury. Ideal for family gatherings. Email: george.dowswell@man.ac.uk

Great comfortable farmhouse holiday in S Brittany. Spac, attractive, comfortable, peaceful. Sleeps up to 8. Visit www.tyjaouen.com or phone +33 2 98 59 48 83 or +33 2 98 59 45 88.

Nr Traquair - Scottish borders. 5 star cottage offering quality & comfort for 2 in beautiful quiet rural surroundings. The Bothy at Orchard Walls is an

ideal venue for walking, fishing, golfing or complete relaxation. 01896 831 227 for a brochure or availability. www.orchardwalls.co.uk

Italy-Venice. Charming apart, f/f, 3 bedrms, 2 bathrms, can sleep 5. £650pw. Email: tagariello@libero.it

Luxury Villa in Orlando Florida. 4 bed, 3 bath with 24ft pool & spa, overlooking lake. Close to Disney, shops, restaurants and local attractions. Very spac, beautifully furn, 4-poster bed, fully equipped games rm, accommodates up to 8 people + cot. From £400pw. 0161-439 0408 or email: kate@mickeysorlandovilla.co.uk

CARS FOR SALE

Ford Escort 1.8td LX metallic blue, sunroof, e/windows, r/cassette, alloy wheels, rear spoiler. MOT & TAX, in gd cond. £625 ono. 0161-370 1613 after 5:30pm or 07835 026 298.

Ford Fiesta 1.1 hatchback. Silver, F Reg, 1989, low miles, MOT till March, 4 mnths TAX, very reliable. New clutch/fanbelt & alternator fitted. Will pass MOT no probs. £250. 07834 883 255 or email ikaleem@picr.manchester.ac.uk

Daewoo Lanos 1.4. Emerald Green. 1 owner, Y Reg 31/2 yrs old. 24,400 miles. MOT to Aug 05. FSH. C/locking, alarm. CD player & radio Sony. Exc cond. £2,500 ono. 07814 067 551.

Rover 214 Si, 1990. Mid blue, 1400cc. Had lots of TLC. Very reliable, gd cond both in & out for year. 100k miles, MOT to Nov 05. Tax to end of April 05. Servicing record avail. Phillips r/c player. Being replaced by a younger model. £300 for quick sale. 0161-432 1495.

MISC SALES

Conservatory suite, from Housing Units. 2 seater settee with 2 chairs & matching glass coffee table. Only 3 yrs old, lovely design & cond. £270. 0161-442 9763 (evgs).

2 Carpets. Axminster type approx sizes in metres. Crossley Florence classic blue Manchu pattern 2.6 x 3m. Floral pattern mostly red on beige, 3.8 x 3.6m. £25 & £15 or offers. Will sell separately. (27)55069 or email: stuart.thompson@manchester.ac.uk

Moulinex Multi-chef food processor. Hardly used £50. Berghaus Voyager 45, navy, purple, narrow style, used once £40. 0161-445 1647.

Folding safa/bed. Z-type £25. Carlton spin drier £15. Table, hardwood, folding dble leaf £25. Toshiba 1 cu ft microwave £10. Trinity freezer, small size, top opening £20. Performance power chipper/shredder, 1600W used once £35. Writing bureaux £10. 0161-432 1495 evngs/wends.

Magiglo open basket-type, coal effect gas fire £40 ono. Womans semi-dry diving suit fits 5ft 6in, med build £20. (27)55865 or 01706 353 665 or email: moss@maths.manchester.ac.uk

Left-handed golf clubs. Wilson blue ridge, full set of irons with No 3 & 5 metal woods, Suit for beginner. Inc Wilson white/red golf bag. £60. 0161-432 1495 evngs/wends.

Childrens single bed, Mothercare pine. 75cm x 190cm with mattress. Exc cond. 1yr old. £80. (27)52359.

Memory pen. 128mb, USB. Brand new & still in its unopened original packaging. A great way of storing & transferring your data suitable for students or lecturers. A bargain at £12.99. (27)55528 or email: craig.grindrod@manchester.ac.uk

TV/Video stand, free to a gd home. H-Frame style stand on castors, shelf for video/DVD, over 5ft in height. (27)58990 or email: Fiona.wilson@manchester.ac.uk

WANTED

Small second hand fridge & coffee table for small staff rm in Uni. (27)52671 or (27)52678

SERVICES

Ian Hancock, BDS, Dental Surgeon, 180 Oxford Road (nr Manchester Museum). Courtesy, quality, safety. Same day attention for genuine emergencies. 0161-273 8484.

Exp. Joiner. All types of carpentry, woodwork, joinery. Tiling & Plastering. Kitchen, bedroom & office fitting. New windows, doors, ceilings. Hardwood/laminate flooring. Skirting & dado rails, stairs & staircases. Plumbing & electrics. Bricklaying & masonry. Problems discussed. No call-out charge. Free estimates. 0161-610 8597 (answering service) or 07743 324 169.

House Improvements. From decoration to carpentry finishes. Wood floors refinished, plastering, doors, architraving, skirtings, shelving, storage/wardrobe units. Design & fix. Experienced tradesman. 0161-223 0125 ansafone & fax.

Painter/Decorator. Good quality painting & decorating, inside/outside work undertaken, tidy workman. 07840 266 473.

Polyester Graphics Ltd. Digital full colour + b/w copying. Lrge format poster printing, personalised t-shirts, mouse mats, polo shirts & sweat shirts. We also stock postage stamps & a selection of stationery. Small company offering a personal, quick & friendly service. Free & easy parking. 0161-443 1653 or email: polyestergraphic@btclick.com

Counselling/Psychotherapy with Chartered Psychologist, UKCP accredited NLP Psychotherapist and qualified Life Coach with 20 years' consultancy experience. Psychometric Assessment available. 0161-865 3193 or email: fokkina@onetel.com

For all your travel requirements. ABTA 90740. 0161-764 5651 or 0845 058 7328. Email: carol.warburton@travelcounsellors.com or www.travelcounsellors.com/carol.warburton

Psychotherapy/Counselling avail for individuals & couples experiencing emotional difficulties with: relationships, low self esteem, anxiety, loss, low feelings, childhood traumas sexuality. Member of the IFA/MIP. Chorlton & Levenshulme. 0161-224 1634.

Wedding Car Hire. Light silver blue Jaguar XJ6 avail for weddings, fully insured & dec inc fresh flowers. Prices start from £125. For further details 0161-688 0656 or email: andy@weddingservices4u.net

Therapeutic massage - reduce stress & tension & feel good with regular massage from an experienced practitioner. For more information/booking contact Josanne Cowell DTM 0161-224 1634.

Indexing. Do you have to provide an index for your book. A professional indexer will do a professional job. Arts, humanities & social science subjects. 01565 653 597 or email: wildings@btinternet.com

Colman Taylor Graphics Design. Designers of Corporate Literature. From a business card to a full graphics campaign. Suitable for research projects. Dissemination. Competitive prices. 01457 872 666 or fax 01457 877 516. Email: info@colmantaylor.co.uk www.colemantaylor.co.uk

Fully qualified electrician. 25yrs experience in all aspects of electrical installation & maintenance. Security systems for domestic & commercial premises. Free estimates. 0161-747 9443 or 07952 050 825.

Need an electrician? Richard Simpson, City & Guilds, 16th edition qualified electrician. Elecsa registered. Lighting, sockets & alarms, free estimates. 07792 236 698 or Email:rsd-electrical.co.uk

John Toland. Prof Glazier & window fitter. All window, glass & framework. Dble glazing, doors & patio doors. Porch & conservatories. Replacement of failed units (misted up glass). Fascias & soffits. Quick response, all work guaranteed. 01457 588 382 (answerphone) or 07963 620 887.

Relax & unwind body & mind. Aromatherapy, relexology, pamper days & no hands massage. Discounts avail until end of March. 07816 923 486.

Need an extra income or want to change career. Wonderful business opportunity. 0161-333 1131 for a free info pack.

Owens Home Refurbishments. Joinery, woodfloors, plastering, tiling, plumbing & dpc. No job too small. 07977 636 240.

Website Design, Hosting and Name Registration. Competitive hosting prices including a full range of the latest web server technology. PHP, MySQL, PERL, Frontpage all included with so much more! Full website name registration available at highly affordable prices. Full website design service for small and medium sized business, or just for individuals that want to add spice to any web presentation! www.zdfx.co.uk Email support@zdfx.co.uk

MANCHESTER
1824

The University of Manchester

Bring the world to Manchester

We've got the **right** location.

When you are organising a **academic conference**, talk to us about the superb **conference facilities** available at the University of Manchester. Your contacts, plus our experience and facilities, make a powerful formula for success.

Our **ConferCare** service can organise every detail, from delegate registration to website updates and social activities, leaving you free to concentrate on the programme. So let's work together.



For more information, call Sarah Evans on:
0161 306 4108
or visit www.meeting.co.uk

The University of Manchester. A world-class destination

PRIVATE DAY NURSERY

CIARAS TOTS

Building little lives with care

- ¥ Small family run nursery
- ¥ Mature qualified, experienced & knowledgeable staff
- ¥ Caring & friendly atmosphere
- ¥ Secure, nurturing environment
- ¥ Open from 7am to 6pm, Monday to Friday
- ¥ 3 months to pre-school
- ¥ Happy children
- ¥ Outdoor play area

Extra curricular activities on offer such as :

- ¥ Baby Yoga and massage
- ¥ Baby signing
- ¥ Physical Outdoor Development

88 Carmoor Road (off Hathersage Road/Upper Brook Street), Chorlton-on-Medlock, Manchester M13 0FB
For information, please telephone Sharon on 0161 248 5340 or visit our web site www.ciarastots.com

Burbidge Joinery & Construction

Quality UPVC Windows & Doors

All Windows & Conservatories are individually made to each customer's specified requirements. A family business with over 24 years' experience. Laminate and solid timber floors supplied & fitted.

For free advice or information contact: Paul Burbidge (City & Guilds qualified Joiner) 0161-494 5228

Binding Theses & Reports

- Quality materials
- Craftsmanship and competitive prices
- Latest technology to ensure perfect service

For further information please ring the Library Binding and Preservation Department

(27) 53733 Monday to Friday 0900-1600 or the Library Thesis Binding and Sales Point (27) 53749 outside these hours.

DELTA TRAVEL

TWO-NIGHT CITY BREAKS

Paris £143; Barcelona £140; Rome £149; Prague £135; Amsterdam £148

Prices include (1) Return flights from Manchester (including airport tax), and (2) Two nights' hotel accommodation, based on two people sharing. Subject to availability.

Delta Travel, University Precinct, Oxford Rd, Manchester M13 9RN
Tel: 0161 274 4444; Fax: 0161 274 3555; Web: www.deltatravel.co.uk

2DFX

Website Design, Hosting and Name Registration

Competitive hosting prices including a full range of the latest web server technology. PHP, MySQL, PERL, Frontpage all included with so much more! Full website name registration available at highly affordable prices.

Full website design service for small and medium sized business, or just for individuals that want to add spice to any web presentation!

www.2dfx.co.uk Email support@2dfx.co.uk

u-print.com

Printing for You on the North Campus

Full Colour and Black Only Digital Printing & Copying
Hardback & Softback Binding

International Fax Bureau Service
Design for Posters, Flyers, etc.
T-Shirt & Mouse Mat Printing

Barnes Wallis Building
The University of Manchester
Sackville Street
Manchester

Internal Telephone 63269
Email (0161) 306 3269
Web contact@u-print.com
www.u-print.com

Luther King House

"Cosy nights, attractive prices and friendly staff"

Set in 2 acres of private grounds just a little way from the Universities, this secluded and unique location offers superb value for money, relaxing accommodation. En-suite bedrooms from only £21.00 p.p. (twin) or £34 (single).

Delicious evening meals in our dining room. Residents' bar.

Class 1 disabled access and ETC ***
see www.lkh.co.uk or tel: 0161 224 6404

Just The Job

Dee Gilmore-Stewart

Worldwide Universities Network Co-ordinator

Davina Gilmore-Stewart – otherwise known as Dee – is a lady who certainly brings a wealth of experience to her role as Worldwide Universities Network (WUN) Co-ordinator. In the past she has taught English and History, home-schooled her own children and run both a playgroup and a puppet-making business!



She also worked at Cardiff University for ten years, first as Research Manager and journal Editorial Manager in the Department of City and Regional Planning and then as central Postgraduate Recruitment Manager, ultimately setting up and running the University's Postgraduate Centre. So managing a research partnership between 16 Universities across the globe - part of the University's internationalisation of the research agenda - should be just another entry on the CV for Dee.

After moving to Manchester in 2000 to get married she took up the post of Business Support Manager in the then Regional Affairs Office of the Victoria University, before taking responsibility for WUN-Manchester in 2004. Based in the Research Office, she deals with universities including Nanjing Zhejiang, Penn State, Washington-Seattle, UCSD, Utrecht, Oslo and Bergen, encouraging research partnerships between them and their associated partners.

Day to day, Dee's role focuses on responding to staff queries about other centres in the Network relevant to their research, arranging meetings and virtual research seminars between WUN academics and

providing mobility funds and administrative assistance. She also supports the development of eLearning programmes, and promotes the Network's Global Exchange Scheme to staff and postgraduate students with events like the Penn State Concert '100 years of Musical Theatre' on the 11 March (see page 8 for details).

"I really enjoy putting people in touch with each other and helping them to extend their research on globally significant issues, such as poverty and energy-use," says Dee. "I also love working with the exchange students, whose work frequently results in publications and enhances the potential for partnerships between research groups."

Her objective is to develop a portfolio of activities between the Network's Universities, from staff and student exchanges to joint papers and internationally-funded projects. Her prior experience has proved invaluable in this, whether she's networking, engaging in PR and marketing activity or supporting postgraduates' research strategies. "My ten years as a home educator certainly fine-tuned my listening skills and patience, and as a former puppet-maker I'm quite adept at pulling strings too!" she jokes.

WUN successes to date include establishing partnerships in bioinformatics, eLearning research, multilingualism, weathering and globalisation, and discussions are also underway in development studies, poverty and well-being, public engagement with science and nuclear energy. She is also proud to have set up and run Café Scientifique since March 2003 with former Regional Affairs colleague Lita Denny, a role which they have just sadly relinquished as their new roles develop.

Outside work, Dee is a lover of the great outdoors; "I garden, build ponds, plant trees, walk and generally mooch about!" she says. She is a trustee of the organisation Community Forests Northwest, which is concerned with the 'greening' of the Liverpool and Manchester areas (<http://www.redroseforest.co.uk>), but even with her love of the outdoor life isn't immune to the lure of a roaring fire and a good book.

For more information on the Worldwide Universities Network or to arrange a presentation, please contact Dee on dee.gilmore-stewart@manchester.ac.uk or 275 8261.

Next Issue is 25 April

News Contact

News and story ideas

Rachael McGraw (Mon-Weds)
Jo Nightingale (Weds pm - Fri)

Telephone 0161 275 2112
email uninews@man.ac.uk
Deadline 14 April

Events Contact

Events and listings information

Philippa Adshead
Telephone 0161 275 2922
email unievents@man.ac.uk
Deadline 14 April

Adverts Contact

Ads and distribution queries

Lorraine Harrop
Telephone 0161 275 2113
email uniads@man.ac.uk
Deadline 15 April