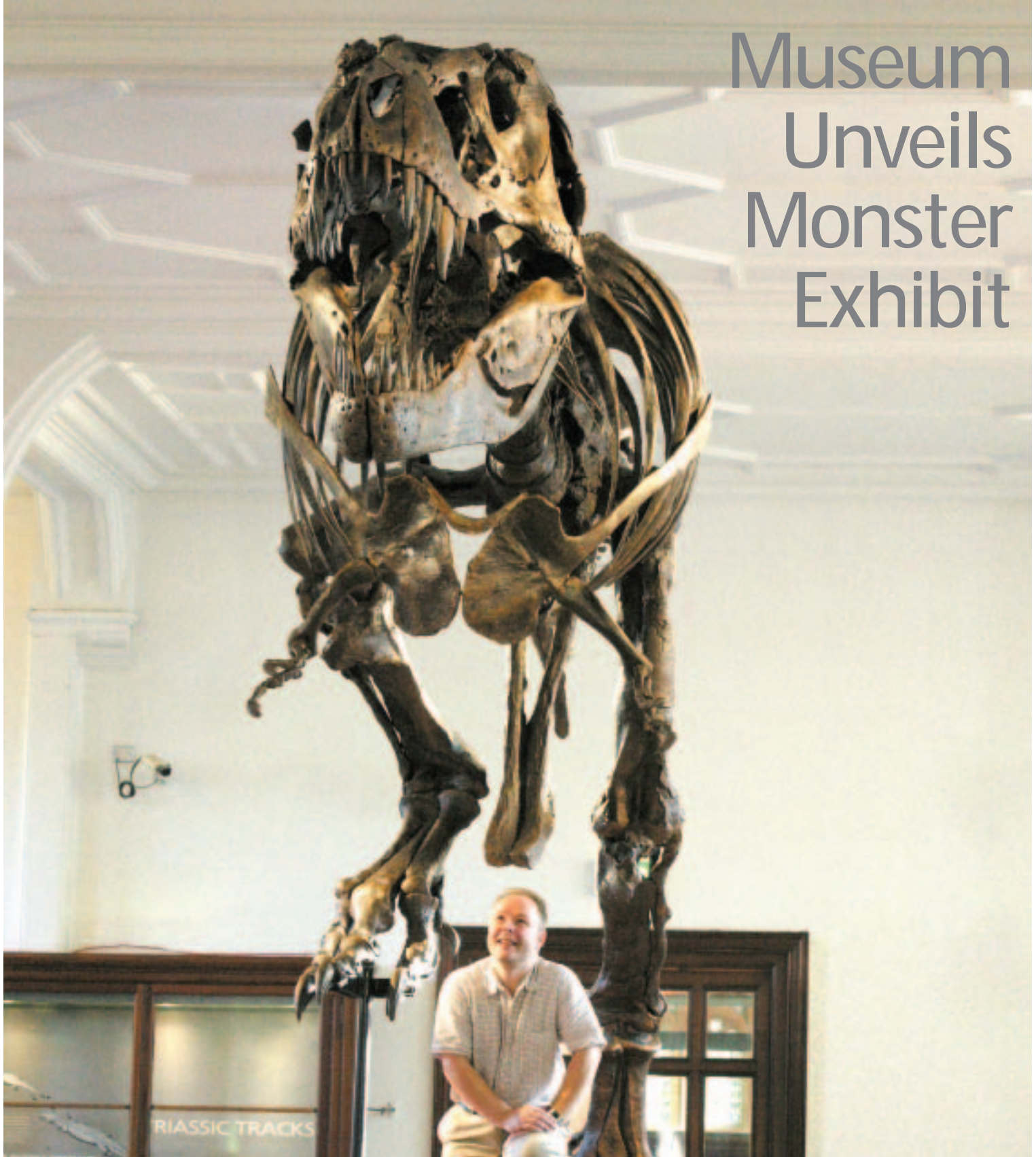


# UniLife

## Museum Unveils Monster Exhibit



# NewsDigest

## Contents

- 3 Monster Exhibit
- 4 News
- 6 Research
- 7 In the Community
- 8 Name Changes on Campus
- 10 Profile
- 12 People
- 14 What's On
- 16 Seminars
- 17 Looking Back/Noticeboard
- 18 Classified Ads
- 20 Just the Job

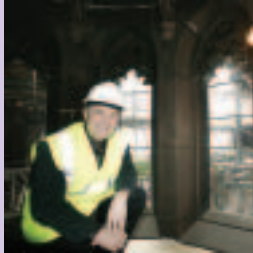
Front cover photo:  
Dr Phil Manning and T.rex at the Museum.  
Photo by Pauline Neild

### A summary of the key news in this issue of UniLife:



3

The Museum unveils its latest and largest exhibit, a cast of the second most complete Tyrannosaurus rex skeleton known to science. At 40 feet in length, the monster exhibit will be not only be a major visitor attraction, but also used for study and research.



5

Central Manchester Central MP Tony Lloyd paid a visit to the John Rylands Library on Deansgate on the 10th anniversary of the Heritage Lottery Fund which has awarded £8.2 million towards the redevelopment of the historic building.



7

Staff of the new Careers, Business and Community Division have been busy in launch activities to alumni and British Consulates overseas as well as to local communities in Manchester.



8

A number of buildings and locations have changed following the merger of the two universities. To ensure staff are up-to-date with these, we have re-created the campus map and highlighted where these are, along with their new names.



13

Professor Geoffrey Beattie, Head of the School of Psychological Sciences, has been elected President of the Psychology section of the British Association for the Advancement of Science. The BA aims to promote openness about science in society.



# Monster Exhibit



**The Manchester Museum unveiled its largest ever exhibit at a special preview on 3 November, a cast of the skeleton of the dinosaur *Tyrannosaurus rex*, the second most complete *T. rex* known to science.**

Dr Phil Manning, Curator of Palaeontology at the Museum, said: "Stan is already proving to be a major attraction at the Museum particularly for young visitors, but it's much more than that, we will use it for study and research purposes as well."

Researchers are hoping to unlock the secrets of Stan's fossil record and teach us more about this incredible creature and the links between dinosaurs and birds.

They have already learned that Stan survived a broken neck, almost certainly in a fight with another *T. rex* – a hole which is a perfect match for a *T. rex* tooth has been found in the bones at the back of Stan's skull.

Phil and his team had been working on the display for Stan in the Fossils (Palaeontology) Gallery since July but after careful preparation were able to erect the cast in just one day.

Stan is displayed as if in a flat run, which may be familiar to viewers of the BBC's *Walking with Dinosaurs* series - but this is the first time that a *T. rex* skeleton has been displayed in this position.

The exhibit was unveiled by President and Vice-Chancellor Professor Alan Gilbert at the preview which was also attended by a group of specially-invited schoolchildren from Saddleworth and covered extensively by the media.

Stan is now on permanent exhibition at the Manchester Museum.



Dr Phil Manning

At three tonnes and measuring 12.2 metres (40 feet) in length and 3.7 metres (12 feet) to the hip, "Stan" – named after its discoverer - dwarves the other large museum exhibits, such as the skeleton of the sperm whale skeleton (see page 17).

The original 65 million year old *T. rex* skeleton was discovered in 1987 by amateur

palaeontologist, Stan Sacrison, near Buffalo, South Dakota in the USA and excavated in 1992 by the Black Hills Institute of Geological Research. To date, 199 bones have been found – 70% of a complete skeleton. This is on permanent display at the Black Hills Museum of Natural History Exhibit in Hill City, South Dakota.

## News



# Chinese Law Visit

**A high-level delegation of Law academics from universities in China visited the School of Law on 28 October.**

The delegation comprised Professors Zeng Xianyi, Dean of the Law School of Renmin University; Wu Handong, President of Zhongnan University of Economics and Law; Zhu Yong, Vice President of China University of Political Science and Law; Wang Chenguang, Dean of the Law School of Tsinghua University; along with officials from the Ministry of Education and the Chinese Embassy in London.

The delegation was welcomed by Professor Andrew Sanders, Dean of the School, Professor Asif Qureshi, Director of External Relations, Dinah Crystal External Relations Officer, Law School; Professor Alistair Ulph, Vice-President and Executive Dean of the Faculty of Humanities;

Professor Paul Layzell, Vice-President for External Relations.

After a discussion on co-operative arrangements, the guests met Chinese students and toured the University including the Legal Advice Centre. This award-winning service set up by the School of Law with the support of law firms in Manchester, gives undergraduates the opportunity to work on real cases alongside solicitors while providing free legal advice to the public.

This was followed by lunch when the Chinese delegation also met members of the local Chinese community including Mr Michael Redfern QC (Northern Circuit) and Mr Frank Sinclair the Law Society President.

## Staff survey

This week (week beginning 15 November), the campus-wide staff survey, announced in the last issue of UniLife is being launched.

Staff who have access to a computer will receive an e-mail message once the survey is 'live' with a link to the web page. They can then complete the survey online or – if they prefer – complete a paper copy. Staff who do not have access to a computer will be given a paper copy.

The anonymous and confidential survey should take 30-60 minutes to complete but it will be time well-spent, with the results used to directly inform the University's operational planning. The deadline for responses is 3 December.

It is intended that the survey will be carried out every two years so that the President and his Senior Management Team use the feedback to influence how the University is run.

The results will be publicised in 2005.

The staff survey team would like to thank all the staff that have helped in the focus groups, pilot and the drafting of the questionnaire.

## Laurie Taylor Lecture

All staff are invited to attend a free lecture and drinks reception at the University organised by the Times Higher Education Supplement (Times Higher) on Thursday 25 November in the Whitworth Hall starting at 6pm.

Given by Times Higher columnist Professor Laurie Taylor, who writes the humorous back-page column as Vice-Chancellor Professor Lapping of the fictitious University of Poppleton, the lecture is the first of its kind to be organised by the publication.

Laurie Taylor also presents Thinking Allowed and Room for Improvement on BBC Radio 4. He was previously Professor of Sociology at the University of York and

is now a freelance writer, presents Thinking Allowed and Room for Improvement on Radio 4 and is an accomplished public speaker.

Earlier the same day, the Times Higher also require the participation of a number of staff in a focus group. This will be aimed at helping to shape the content of the Times Higher and to ensure it carries relevant coverage and reflects the interests of those working in the higher education sector.

Anyone who would like to attend the lecture or take part in the focus group should contact [lecture@thes.co.uk](mailto:lecture@thes.co.uk) with their details.- or call 020 7 782 3396..

## News

# MP Lends Library His Support

**Central Manchester MP Tony Lloyd paid a visit to the John Rylands Library on Deansgate recently on the tenth anniversary of the Heritage Lottery Fund which has contributed £8.2m to the redevelopment of the building.**

The Library, which is the Special Collections building of the John Rylands University Library, is currently undergoing refurbishment to carry out restoration works on the historic building and provide state-of-the-art visitor facilities.

The work has been funded by £8.2 million from the Heritage Lottery Fund and more than £3m from the European Regional Development Fund, with the 'Unlocking the Rylands' campaign aiming to find another £4 million.

During his visit to the site, Tony Lloyd met with Head of Special Collections, Dr Stella Butler, who accompanied him on the tour of the Library.

Tony Lloyd said, "I have visited John Rylands Library in the past and it is certainly true that it is one of Manchester's hidden treasures. It is appropriate that my visit coincides with the 10th Anniversary of the creation of the Heritage Lottery Fund, as this project is one of the many that have benefited from the fund over the past 10 years."

[www.ryliweb.man.ac.uk](http://www.ryliweb.man.ac.uk)

## Molyneux Scholarship

**The University's international and alumni relations activity has led to the establishment of a \$25,000 (c£16,000) scholarship for an Arizona State University (ASU) graduate to study for a Masters in any subject here at Manchester.**

The award has been funded by a donation from Mike and Shirley Molyneux to the North American Foundation for the University of Manchester (NAFUM), and is for study in any discipline in 2005/6. The University already has close links with ASU through its undergraduate exchange agreement and first made contact with Mike in 1997 through the Development and Alumni Relations Office (VUM).

The Molyneuxs who live in Phoenix, are originally from the North West of England - Mike was an engineering student at Manchester Metropolitan University. Now

retired, he was previously President of Cytec Engineered Materials.

Tanya Luff, Deputy Head of the International Office, said: "The fact that we are now the UK's largest university played a key role in creating the scholarship which will help to raise our profile in the US and significantly strengthen our existing undergraduate links with ASU.

"A key selling point for US students to study in the UK is that here a Masters only takes a year to complete - in the US it takes two."



From left: Dr Stella Butler, Head of Special Collections; Alison Firth, Library Development Officer; Tony Lloyd MP.



## Research



# Crossing the Cultural Divide

**A new Centre has been established at the University to bring together the wealth of expertise in cultural theory on campus from across several disciplines within the new Faculty of Humanities.**

The Cultural Theory Institute (CTI), is a cross-disciplinary networking initiative which co-ordinates research activities on the Cultural Theory theme. Members of the Institute are drawn from the Schools of Social Science; Arts, Histories and Cultures; Languages, Linguistics and Cultures; and Environment and Development.

There is currently a network of 50 affiliates to the CTI and the University can boast leading experts in this field. These include Professor of Cultural Theory, Terry Eagleton, Senior Lecturer in English Literature, Ken Hirschkop, and Amelia Jones, Pilkington Professor in Art History.

CTI Director Dr Lisa Adkins, a Reader in Sociology, said: "Across the former Faculties of Arts and Social Sciences, there was the recognition that many people

were working on cultural theory themes in different departments. The idea of this initiative is that bringing people together will produce more than the sum of its parts - for example generating stronger research grant applications. We want to draw on the fact that we have these individuals who are renowned internationally and enhance our profile.

"There is a lot of synergy between different departments and cross-disciplinary research fits in with the new University structure and the Manchester 2015 agenda. There is real potential for some exciting collaborations."

The CTI team, based at 178 Waterloo Place, comprises an Administrator and five Student Research Associates whose work includes organising a series of

postgraduate activities under the Cultural Theory theme including reading groups, a postgraduate seminar series and culture-related activities under the auspices of Kultur Café.

On 21-23 January 2005, the CTI will hold its inaugural conference 'Making Use of Culture' to instigate a rethinking of customary ways of imagining, interpreting, allocating and implementing culture. Five international plenary speakers will be showcased, and University President, Professor Alan Gilbert, and Vice-President and Executive Dean of the Faculty of Humanities will welcome delegates.

For further information, visit the website below or call 275 8997/8.

[www.cti.man.ac.uk/](http://www.cti.man.ac.uk/)



Actors Suzann Mclean and Joe Young

# War Work

**Around 50 people attended the launch of a major new piece of research looking at the relationship between performance and war at the University last week.**

'In Place of War' is a £386,000 project being undertaken by the Drama Department's Centre for Applied Theatre Research.

The research team, which is being led by James Thompson will look at examples of performance in war-torn areas, as well as studying performance projects by communities fleeing conflict, such as refugees and asylum seekers in the UK.

At the launch, the team gave an overview of the project which was followed by a performance of a play entitled 'I have before me a remarkable document given to me by a young lady from Rwanda', which tells the story of a Rwandan asylum seeker living in London.

The play has been inspired by real life experiences by Rwandan asylum seekers in

the UK and is being performed by the London-based theatre company Ice and Fire, which aims to present new writing about people caught up in wars and conflicts.

The Iraqi theatre director who attended the event Alan Amin runs World Theatre Company, based in Manchester, and is an Iraqi Kurd who fled Iraq after suffering persecution.

[www.inplaceofwar.net](http://www.inplaceofwar.net)

# From Consulates to Check-Outs



BCCD staff 'Make a Difference' at ASDA

## In the Community



**The Business, Careers & Community Division (BCCD) has been busy in launch activities to alumni and British Consulates overseas as well as to local communities in Manchester.**

From left: Alastair Newton, Deputy Consul General; Alumnus Robert W Maxwell (BA Econ Hons 1970); his wife Vanessa Maxwell; Jane Ratchford, Director, BCCD

Successful events were held at the British Consulates in Boston and New York to thank alumni and Consulate staff for their support of the former Victoria University of Manchester and UMIST and to launch the new University. The events were organised in collaboration with colleagues in the Alumni Office.

### Consulates

The vision for 2015 was well received. Alumnus Roland Challons-Brown welcomed the opportunity it provided for alumni 'to develop a more strategic engagement with the University'. Both Consulate staff and alumni were keen to work with the University in imaginative ways including:

- Consultancy and support to promote the University to US businesses;
- Numerous offers of mentoring to prospective and existing students;

- Enquiries on postgraduate study;
- Commitment to work in partnership with the University to support inward investment to Manchester and the North West.

There was also considerable interest in several of the University's research themes and its work with deprived communities in Manchester.

Jane Ratchford, Director of the BCCD, said: "A key aim was to develop a 'sales team' of influential advocates who would promote the 2015 strategic plan. I am confident that we left behind us alumni and Consulate staff able and willing to undertake this role on our behalf."

### Check-outs

To celebrate the national 'Make a Difference Day', BCCD staff volunteered their services as careers and business

advisers to the public at the ASDA Eastland store. Their message was that the University wanted to make a contribution to community, and was committed to being a university of the city, and for the city.

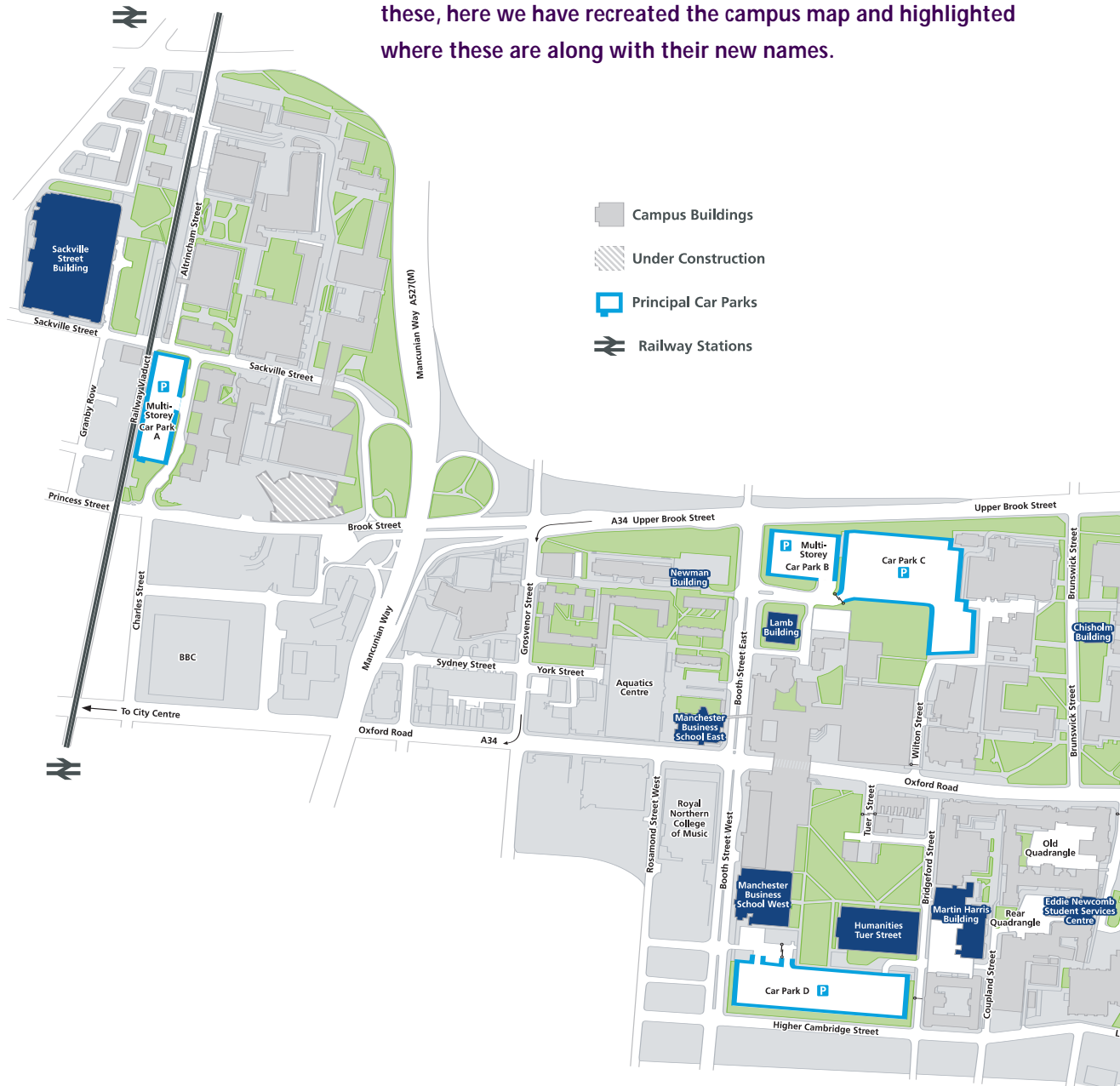
Fifteen BCCD staff, including the Director and Deputy Director, offered people of all ages and backgrounds, careers guidance, useful tips on applying to university and advice on business start-up. The venue, one of the largest superstores in the UK attracting 72,000 shoppers a week, is based in a deprived area of Manchester where progression rates into higher education currently stand at only 0.02%.

Andrea Rannard of the BCCD and event coordinator said: "University staff relished the opportunity to share their expertise with members of the local community and to try to make a difference to the lives of others."



# Name changes on campus

Several buildings and locations on campus have changed their names following the merger. To ensure staff are up-to-date with these, here we have recreated the campus map and highlighted where these are along with their new names.







Humanities Lime Grove



Sackville Street Building

In consultation with their respective Faculties, Faculty Managers have come up with new names. Only a few changes were proposed and adopted as a temporary measure, these are:

- Manchester Business School is now Manchester Business School West
- Manchester School of Management is Manchester Business School East
- The Arts Building is now Humanities Lime Grove
- The School of Architecture is now Humanities Tuer Street

Other buildings which have name changes are:

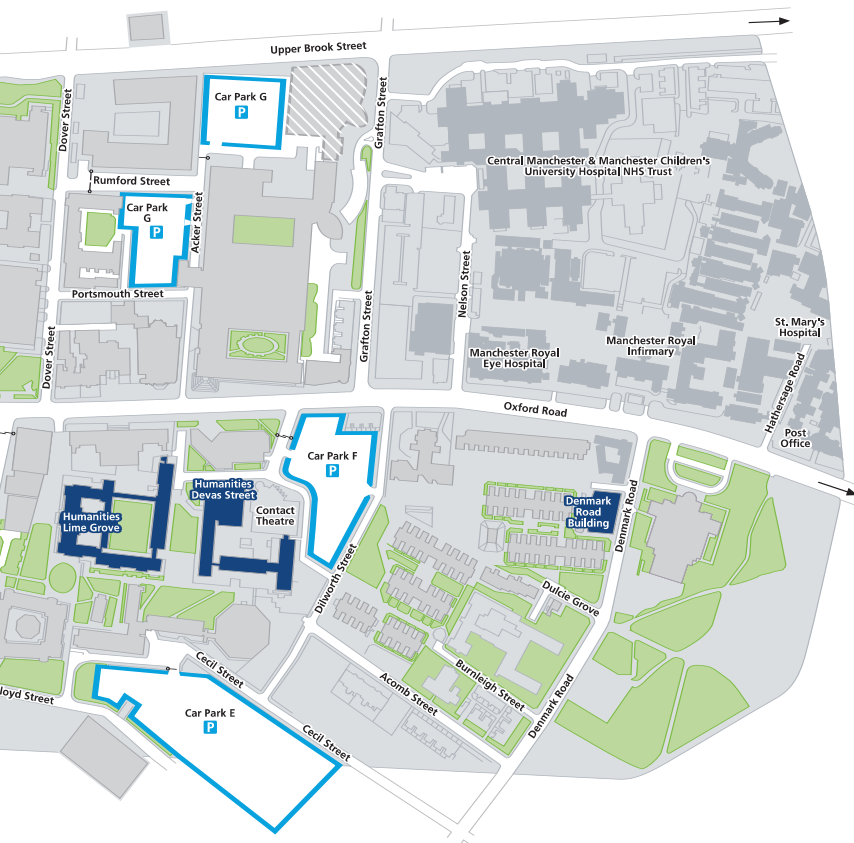
- Main Building (UMIST) is now Sackville Street Building
- The Music Building on Denmark Road is now the Denmark Road Building
- The John Owens Annexe is the Eddie Newcomb Student Services Centre
- Coupland II is The Martin Harris Building

There are three long-term temporary accommodation areas which are to be named:

- Portacabins adjacent to Crawford House are the Lamb Building
- Portacabins adjacent to the Materials Science Centre are the Newman Building
- Portacabins adjacent to the Zochonis Building are the Chisholm Building.

Staff should be aware that the campus car parks have now changed and are named A-G.

Staff are also asked to remember that the terms 'Sackville Street' or 'Oxford Road' ends of the campus should be referred to instead of 'North campus' and 'South campus,' to reflect the single University on one campus.

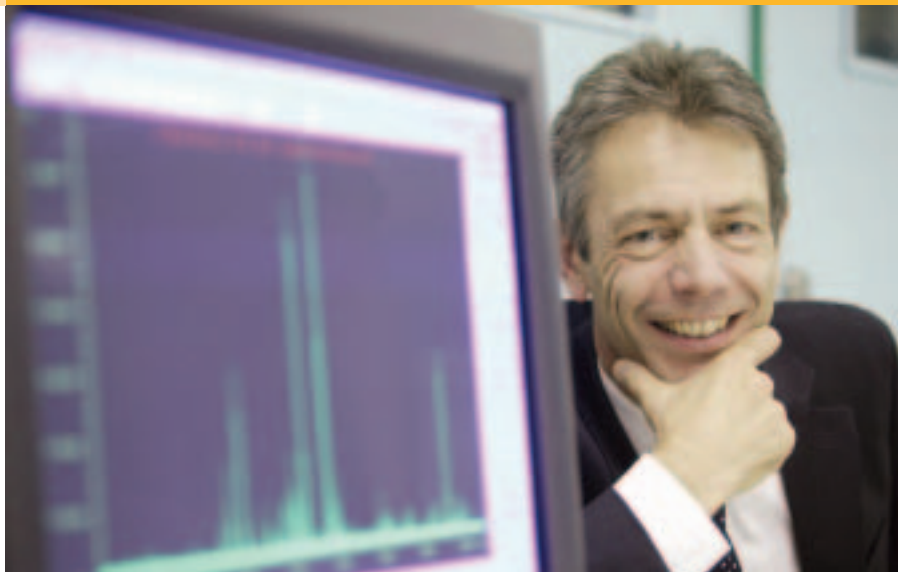


## Profile

“ ... I believe that research has to be collegial – we all benefit from bouncing ideas off one another ”

# Gaskell's Gateways

**Not the man in the Moon, but a man with a mission to Mars has played a pivotal role in opening one of the gateways on Professor Simon Gaskell's career path.**



Professor Colin Pillinger, the irrepressible architect of the attempt to land Beagle 2 on Mars, was a fellow researcher at Bristol and remains a friend. Nearly 30 years ago, he gave Simon some crucial advice when a key job opportunity came up in Cardiff. “It was the perfect job for me, but it came at the wrong time,” says Simon, who was then holding an MRC post-doc Fellowship in the Department of Chemistry at Glasgow. Colin advised him to apply anyway – and see if the appointment might be deferred for a year. Simon did so, the arrangement was agreed and, in 1977, he took up the job of Principal Research Officer and Head of the Mass Spectrometry Unit at the Tenovus Institute for Cancer Research at the University of Wales College of Medicine in Cardiff.

“I’m very grateful to Colin,” says Simon. “It changed my direction at a time when I had identified the exciting opportunities in applying my skills to the medical rather than the environmental

field.” It was the start of a nearly a decade of trailblazing work in Cardiff, particularly on steroid analysis in relation to breast and prostate cancer.

Today, nearly 30 years later, the research interests of his group, in this University's Michael Barber Centre for Mass Spectrometry, include a contribution to the Leukaemia Research Fund National Proteomics Facility, in collaboration with the Paterson Institute. So, the cancer-related work goes on. “Fundamental understanding of analytical chemical techniques enables us to contribute to the elucidation of problems of fundamental biological and clinical importance,” he says.

Much has happened, of course, between that beginning in Cardiff and his position now in Manchester, and many gateways have been negotiated on the way, but you can see the path. Now, he is taking on responsibilities as Associate Vice-President for Research – and, clearly, his track record

over the years of front-line research and of fostering collaboration within the University, as well as with institutions in other countries, especially the United States, enables him to lead by example.

His new responsibilities will complement the work of the Vice-President for Research, Professor Nancy Rothwell FRS, who also carries a big research commitment of her own.

“I strongly believe that individual academics need to take responsibility for covering the costs of their own research,” he says. “But I also believe that research has to be collegial – we all benefit from bouncing ideas off one another.”

His view is very much coloured by his experience, especially in the US, where he worked for several years, in Texas and in North Carolina, in the '80s and early '90s.

He had a sabbatical year from Cardiff to lead the Mass Spectrometry Group at the National Institute of Environmental



Health Sciences at Research Triangle Park, NC. And in 1987, he moved to the States as Professor of Experimental Medicine and Pharmacology at Baylor College of Medicine in Houston.

He worked on developing physical chemical techniques to solve medical problems, particularly aspects of cardiovascular disease. "It was very stimulating," he says. "But since Baylor was a private college, you had to compete in the marketplace - set up your stall, so to speak, and beat off your competitors. I had no problem with that, but it didn't exactly encourage collegiality in the way that we know it here."

Ever since then, he has held to his dual principles of individual responsibility, bolstered by collaboration. "The productivity of UK science is related to the collaborative approach," he says. "I suppose I have what amounts to an addiction to interdisciplinary work - departmental boundaries are irrelevant."

Even at the very beginning of his time in Manchester - he came in 1993 as Professor of Mass Spectrometry at UMIST - he experienced the sort of collegiality he champions today. He had a meeting with Rob Beynon, Professor of Preclinical Veterinary Medicine at Liverpool and formerly at UMIST. "It was wonderful," he says. "We just bounced ideas off each other all afternoon." He still collaborates with Rob and is a Visiting Professor in his department. And, reaching further back, he still does collaborative research with colleagues in the US.

His attachment to America goes back to school days. Before he went to Bristol to read Chemistry, he spent a year, courtesy of an English Speaking Union scholarship, at a private school in California - and the late '60s were a great time for a teenager to be there.

He grew his hair long, embraced the hippy culture, made a lot of friends, did the 99 days-for-\$99 unlimited travel deal on Greyhound, swapped his BOAC return ticket (as you could then) for a cruise home on the Queen Elizabeth.

Indirectly, it was that experience which shaped his future career. "I had such a good time, I badly wanted to go back and spend a summer vac there," he says. "A friend suggested I talk to the Professor of Geochemistry, Geoff Eglinton, who had collaborators in California. I did - and he set me up with a lab job in Berkeley."

When he came back, almost as a quid pro quo, but partly inspired by his summer experience, Simon opted to work with Prof Eglinton FRS, who was interested in what happens to steroids in lake sediments. (Biological processes represent the first stages in the development of oil). That's how he ended up doing a PhD in Geochemistry, leading to a thesis entitled "The environmental geochemistry of sterols." Another gateway.

He and his wife, Deirdre, an educational psychologist, met as undergraduates at Bristol. They enjoy all that Manchester has to offer culturally, having season tickets to the Royal Exchange and being frequent visitors to the Halle. They keep fit down at the gym. They have two children, Clare, 25, who is a lawyer, and 23-year-old Nick, who is training to be an architect.

In view of his "addiction" to collaboration, it is not surprising that Professor Gaskell enthusiastically embraced the Project Unity process, serving on the Dalton Group and the Board of Directors. No-one could be more positive than he about the benefits of the merger: "I'm very proud to have played a part in bringing it about - and to have a role in building still further the tremendous research profile we have."

## CV

### Name

Professor Simon Gaskell

### Position

Associate Vice President for Research  
The University of Manchester

### Education

B.Sc. (Hons); Chemistry;  
University of Bristol, 1971

Ph.D.; Chemistry;

University of Bristol, 1974

### Career History

1974-1977

Medical Research Council Post Doctoral  
Fellow, Department of Chemistry,  
University of Glasgow

1977-1986

Principal Research Officer and Head of  
Mass Spectrometry Unit, Tenovus  
Institute for Cancer Research, University  
of Wales College of Medicine, Cardiff

1984-1985 (Sabbatical)

Visiting Expert and Acting Group  
Leader, Mass Spectrometry Group,  
National Institute of Environmental  
Health Sciences, Research Triangle Park,  
North Carolina, USA

1987-1993

Professor of Experimental Medicine,  
Department of Medicine, Baylor College  
of Medicine, Houston, Texas, USA;  
Adjunct Professor of Pharmacology and  
Chemistry (1989-1993), University of  
Houston, Texas, USA

1993-

Professor of Mass Spectrometry, UMIST

1999-2002

Head of Department, Department of  
Chemistry, UMIST

1999- Visiting Professor, Department of  
Preclinical Veterinary Medicine,  
University of Liverpool

2003- 2004

Member, Board of Directors, Project  
Unity (UMIST and the University of  
Manchester)

2004-

Associate Vice President for Research  
(The University of Manchester)



## People



**Veronique Rizzuto from the Teaching and Learning Assessment Office has just returned from Ethiopia where she worked as a volunteer for 'Habitat for Humanity' helping to build simple houses for homeless families in Dese.**

# Building Hope

Veronique said: "Nothing quite prepares you for the images that Ethiopia presents to the visitor. There a family of ten is crowded in a house no larger than an average sized sitting room in the UK. The school had four classrooms for 450 children and no toilets."

Veronique has now committed herself to raising funds with some of the volunteers, to build more classrooms and

facilities for the Karagutu Elementary School in Dese.

Veronique thanks all those who donated money for the Habitat for Humanity building project in Dese. Your contributions helped to build 15 houses; 150 more are to be built over 3 years.

If you wish to make a donation for the school project, you can 'Buy a Brick' for £1.50. Email Veronique on [hardyv\\_36@hotmail.com](mailto:hardyv_36@hotmail.com)

<http://groups.msn.com/Ethiopia2004>

# Think Pink

Staff at the John Rylands University Library took part in 'Wear it Pink Day' on 29 October, a national day organised by Cancer Research UK in which organizations are invited to get their staff to dress up in pink clothing and pay £2 to Cancer Research.

Organised by Diana Leitch - Deputy University Librarian and Associate Director JRUL (Information Resources and Academic Support), the day along with a cake stall, raised £239.50.

Thomson Learning who were visiting the Library on the day were invited to join in the fundraising efforts.



<http://www.wearitpink.co.uk>

## People

# GE Foundation awards



From left: Charles Alexander, Victor Tsoi, Therese Buchmeier

**The GE Foundation and the Institute of International Education (IIE) recognised the first winners of the GE Foundation Scholarship at a public awards ceremony held in London recently. At the ceremony, Charles Alexander, the National Executive of GE in the UK, presented awards to 12 outstanding students from five universities, including Victor Tsoi from The University of Manchester.**

The GE Foundation, the philanthropic organization of the General Electric Company, invests in initiatives that improve educational opportunity and strengthen community organizations in GE communities around the world.

The award identifies low-income, first year students who have demonstrated academic excellence, community involvement and financial need, and

continues throughout their second and third years of study. "This scholarship identifies promising young scholars who have demonstrated their commitment to society and provides them with tools to develop their leadership potential.

Victor Tsoi, a Computer Science student at the University was among the winners, and was awarded £2,000 as part of the scholarship programme. Victor commented:

"I am very pleased to be given this award. I applied just thinking I would 'give it a go' and was surprised to be chosen. I will use the money to further my professional development whilst at University"

Victor will also be offered a mentorship opportunity within GE UK and will participate in community work in their home or university communities.

[www.iie.hu/ge\\_uk.html](http://www.iie.hu/ge_uk.html)

# Psychology President

**Professor Geoffrey Beattie, Head of the School of Psychological Sciences, has recently been elected to serve as President of the Psychology section of the British Association for the Advancement of Science (BA).**

The BA is the UK's nationwide, open membership organisation dedicated to connecting science with people, so that science and its applications become accessible to all. The BA aims to promote openness about science in society and to engage and inspire people directly with science and technology and their implications.

Professor Beattie was chosen as a result of his ability to communicate scientific

issues to the public, and will be responsible for putting together a programme of events for the BA's Festival of Science, which takes place in Norwich in September 2006.

He said: "I care passionately about the communication of science, and in particular psychology, to a general audience. Psychological science, in my view, is far too exciting to be kept locked behind doors in the ivory towers of a University."



Professor Geoffrey Beattie

[www.the-ba.net](http://www.the-ba.net)

# What's On



## The Whitworth Art Gallery

### DISPLAYS/COLLECTIONS

**William Morris "Ministering to the Swinish Luxury of the Rich"** to 23 December 2004  
An exhibition by David Mabb. Mabb recycles familiar images from the Gallery's holdings of William Morris material to produce a new installation.

**Ship Ahoy!** to February 2005  
This exhibition of watercolours, prints, wallpapers and textiles includes depictions of galleons, fishing smacks, trading vessels, warships and freshwater boats. The exhibition also features a Ship Ahoy! Reading area providing children's books with stories about ships, pirates and the deep blue sea.

**Walter Sickert 'Drawing is the thing'**  
October to 5 December 2004  
This extensive loan exhibition of Sickert's drawings offers an unrivalled insight into his techniques, themes and, most importantly, his reasons for the drawing.

### TOURS AND EVENTS

Every Saturday at 2pm there is either an Exhibition Tour or an Eyeopener Tour.

**Walter Sickert Curator's Tour** -  
Sat 30 Oct, 2pm, FREE

### CONCERTS

**Dibley String Quartet:** excerpts from quartets by Dvorak and Shostakovich,  
Sun 31 Oct, 3pm, FREE

**Whitworth Art Gallery**, Oxford Road, 0161 275 7450 [www.whitworth@man.ac.uk](http://www.whitworth@man.ac.uk)  
Opening hours Mon to Sat 10am - 5pm, Sun 2pm - 5 pm FREE Admission  
Gallery Café 0161 275 7497 The café sells a selection of drinks and light meals.  
Gallery Shop 0161 275 7498 The bookshop stocks a range of art and design books, cards and gifts.  
Collection Exhibitions Archive Now Online. The Whitworth's online 'Collections Catalogue' now allows you to browse and search selected exhibitions held at the Gallery over the past 10 years. Follow the link from [www.whitworth.man.ac.uk](http://www.whitworth.man.ac.uk)

## Gig Guide Manchester Academy 1, 2 & 3

Mon 15 Nov  
**Beverley Knight**  
**Modest Mouse**

Tues 16 Nov  
**The Concretes**

Weds 17 Nov  
**Walter Trout**

Thurs 18 Nov  
**Deus**

Fri 19 Nov  
**The Beta Band**  
**Josh Ritter**  
**Teen Spirit**  
Sat 20 Nov  
**The Vandals**  
**Camper Van Beethoven**

Sun 21 Nov  
**Academy Unsigned**  
Tues 23 Nov  
**Kristian Leontiou**

Weds 24 Nov  
**One Man and His Beard**  
**Natasha Bedingfield**  
Thurs 25 Nov  
**The Roots**  
**Therapy?**

Fri 26 Nov  
**Machine Head**  
**The (International)**  
**Noise Conspiracy**

Sat 27 Nov  
**Jill Scott**  
**Mark Lanegan**  
**Glenn Tilbrook & The Fluffers**

Sun 28 Nov  
**Willard Grant Conspiracy**

Mon 29 Nov  
**Alter Bridge**

Tues 30 Nov  
**Lamb of God**

**Students' Union** Oxford Road, Manchester, M13 9PL

Tickets from: Piccadilly Box Office, easy Internet Cafe, (c/c) 0871 2200260  
Online @ [www.manchesteracademy.net](http://www.manchesteracademy.net) Royal Court (Liverpool) 0151 709 4321 (c/c)  
Students' Union 0161 275 2930



## Contact Theatre

Written and directed by Nona Sheppard  
**CRAZY LADY**  
Featuring music composed and performed live by Nikki-Kate Hayes. Design by takis

Two old friends, Claudia and Jaz, estranged for twelve years, meet up again in a dark and mysterious gothic bar called the Crazy Lady to talk about times past. With each of them hiding and revealing the myriad of truths in their lives, they find themselves caught up in a bizarre tangle of memories, passion and madness, with completely unexpected consequences....

"Nothing is overstated but plenty is understood in this impressive piece."

The Stage  
BSL Performance Thursday 18 November  
Wed 10 Nov 2004 - Sat 20 Nov 2004, £9/£6

Forced Entertainment  
**BLOODY MESS**

Forced Entertainment's Bloody Mess defies categorisation, creating a startling and comical new logic from the collisions of disconnected characters, stories and performances. Influenced by popular culture, cinema, contemporary art and the occasional dash of heavy metal, Bloody Mess takes these elements and creates a whole that is intelligent, darkly comic and unexpectedly moving.

Marking their 20th birthday, Bloody Mess is Forced Entertainment at its best – uncompromising political Pop Art, ironic physically demanding camp trash, visual spectacle that tries to describe the modern world in all of its beauty, horror and complexity.  
**EVENT!**

**Post Show Discussion** - Tues 23 Nov  
Forced Entertainment will be answering your questions at this special event for **BLOODY MESS** ticket holders.

Tue 23 Nov 2004 - Wed 24 Nov 2004, £9/£6

**Contact Theatre**, Oxford Road, Manchester  
Tickets/Info: 0161 274 0600

For information on other events please visit our website [www.contact-theatre.org](http://www.contact-theatre.org)  
A limited number of tickets are available from just £4 on the day from the Ticket Office between 11am - 4pm daily.



# Jodrell Bank

The facilities at Jodrell Bank are going through a period of redevelopment. The Visitors Centre currently has a café, an exhibition space and a 3D theatre open, and visitors can still explore the various trails and the natural habitats of the Arboretum's 35 acres with its 2000 species of trees and shrubs and National Collections. In January 2004 Jodrell Bank completed a 180 degree observational pathway close to the base of the world famous Lovell radio telescope.

**Jodrell Bank Science Centre & Arboretum**  
Macclesfield, Cheshire  
01477 571339 [www.jb.man.ac.uk](http://www.jb.man.ac.uk)

# John Rylands Library

The John Rylands Library on Deansgate which is our Special Collections building, will be closed for a period of two years until mid-2006, for essential refurbishment and the construction of a new visitor and interpretative centre. However, access to all the Special Collections is still available through the main library on the Oxford Road end of the campus. A Special Collections Reading Room is open on Purple Floor 4, Monday to Friday 10am to 5.15pm and Saturday's 10am to 1pm. Readers may find it helpful to contact us in advance on 0161 275 3764. For further information visit our website.

**John Rylands University Library,**  
Oxford Road, Manchester, M13 9PP  
0161 275 3751  
[www.manchester.ac.uk/library](http://www.manchester.ac.uk/library)

# International Society

## THEATRE AND MUSIC

For details about the availability of tickets for various theatre and music performances, please visit our website.

## TRIPS

Sat 20 Nov	Day visit to Oxford
Sat 20 Nov	Day visit to Liverpool
Sun 21 Nov	Day visit to Skipton And Haworth
Fri 26 - Sun 28 Nov	Weekend trip to London (With Guided Tour)
Sat 27 Nov	Day visit to Christmas At Chatsworth House

**International Society,**  
(next to Krobar) 327 Oxford Road  
0161 275 4959  
[www.internationalsociety.org.uk](http://www.internationalsociety.org.uk)  
Monday - Friday 9:30am - 5pm

# Manchester Museum

Fridays (during term time), 11am -12 pm  
**Magic Carpet**  
Storytelling and story making for the under fives.

Wed 17 Nov, 1.30 - 3.30pm FREE

**What the Curator Found**  
Hidden Treasures from the Mediterranean Gallery (Dr. John Prag, Keeper of Archaeology at The Manchester Museum) - Find out what real treasures are to be found in our Mediterranean Archaeology collection. Pre-booked event.

Thurs 18 Nov, 6.30 - 7.30pm

**Communicating Vessels**  
Surrealism and Contemporary Art - One of a series of public conversations organised by the AHRB Research Centre for Studies of Surrealism, five contemporary artists will discuss - how their work intersects with Surrealism. For further information and to book tickets, please call Anna Davey on 0161 275 8788.

Sat 20 Nov, 1.30 - 2.30pm FREE

**Hidden Treasures**  
Join our curators of Ethnology and Zoology at the 'Buried Treasure' exhibition handling table, as they show some of the 'treasures' from the natural world. Drop-in event.

Sat 20 Nov, 2.30 - 4.00pm

**Story Scrolls**  
Every treasure tells a tale. Create stories about your own treasured objects or be inspired by those shown at the Museum.

Sun 21 Nov, 12.00 - 3.00pm

**Tusk Tales**  
Take a look at the Benin tusk on our Living Cultures gallery and recreate your own in this art and craft session.

Thurs 25 Nov, 6.30 - 8.30pm

**Alderley**  
A cross-disciplinary project connecting with the community (Clare Pye) - Part of the Centre for Continuing Education Winter Lecture Series. Gain an insight into behind the scenes research and a fresh outlook on the newly refurbished Museum. The series costs £22 per person. To book your place call 0161 275 3278/79.

Sat 27 Nov, FREE

**Hidden Treasures** - Join the Museum's Curator of Archery at the 'Buried Treasures' exhibition handling table and see some of the 'treasures' from our archery collection. Drop-in event.

Sat 27 Nov, 2.30pm, FREE

**The Grand Tour** - Join Graeme Pye, our very own 'Victorian gentleman' guide on this special tour of the Museum. Meet at reception.

Sun 28 Nov, 2.30pm, FREE

**The Grand Tour** - See above.

Sun 28 Nov, 1.30 - 4.00pm FREE

**Invoking Nataraj**  
An afternoon of music, song and dance in celebration of the patron God of the performing arts.

**Manchester Museum** Oxford Road,  
0161 275 2630, [www.museum.man.ac.uk](http://www.museum.man.ac.uk)  
Opening hours, Monday - Saturday 10am - 5pm,  
Sun 11am - 4pm. Free admission, booking is essential for all programmes

# Chaplaincies

**St Peter's House Chaplaincy**  
SUNDAY WORSHIP  
10am Group Work  
11.15am Morning Worship  
6.30pm Evening Worship (Term-time only)  
FOYER 10am-4pm. An area where students and staff can relax and meet friends. A tea/coffee machine is available.  
Precinct Centre 0161 275 2894  
[sph.reception@man.ac.uk](mailto:sph.reception@man.ac.uk)

# Music at Manchester

## SPECIAL CONCERTS & EVENTS

Fri 26 Nov, 7.30pm  
The Cosmo Rodewald Concert Hall  
**The Danel Quartet**  
Schubert "Quartettsatz"  
Webern Five Movements Op.5  
Webern Langsamer Satz  
Schubert Quartet in D minor D.810, 'Death and the Maiden'

Fri 19 Nov, 5.30pm  
The Cosmo Rodewald Concert Hall  
**Beat the Rush Hour Concert**  
Works include Andriessen's confrontational Worker's Union, Malone's performance-art piece Out of a Box and the UK premiere of Adam Swayne's privatisational and monopolistic Maggie, Maggie, Maggie! Sing, Sing, Sing!

## CHORAL AND ORCHESTRAL CONCERTS

Sat 13 Nov, 7.30pm  
Christ Church, West Didsbury,  
**Ad Solem**  
(The University of Manchester Chamber Choir)  
Marcus Farnsworth Conductor  
John Tavener Requiem for Father Malachy Lynch  
Britten Rejoice in the Lamb  
Fauré Requiem

Sun 14 Nov, 11am  
Church of the Holy Name, Oxford Road,  
**Ad Solem**  
Marcus Farnsworth Conductor  
A performance of Fauré Requiem  
As part of High Mass on  
Remembrance Sunday

Sat 20 Nov, 7.30pm  
The Cosmo Rodewald Concert Hall  
**The University of Manchester Symphony Orchestra**  
Clark Rundell Conductor  
Andrew Gourlay Trombone  
Sibelius Symphony No.7 in C  
Nielsen Suite from 'Aladdin'  
Kalevi Aho Symphony No.9 (Sinfonia Concertante No.2)

Sat 27 Nov, 7.30pm  
The Cosmo Rodewald Concert Hall  
**The University of Manchester Wind Orchestra**  
Phillip Robinson, Gareth Parry Conductors  
Laura Llewellyn Horn

## THE WALTER CARROLL LUNCHTIME CONCERTS AND RECITALS

1.10pm Cosmo Rodewald Concert Hall  
Thurs 18 Nov  
Florian Kitt Cello  
Rita Medjimorec Piano  
Arthur Honegger Sonata (1920)  
Franz Koglmann Days of Yore  
Stravinsky Suite Italienne

Thurs 25 Nov  
The Lindsays  
Haydn Quartet in E Op.54 No.3  
Barber Quartet Op.11

School of Music and Drama  
Bridgeford Street, 0161 275 8950/1  
[www.art.manchester.ac.uk/MUSIC](http://www.art.manchester.ac.uk/MUSIC)

**Avila House RC Chaplaincy**  
(next to the Holy Name Church)  
Mass Times  
Mon - Fri 1.05 pm (term-time only)  
Oxford Road 0161 275 6999/273 1456

Chaplains also available Monday - Friday  
Floor B, Room B25, Renold Building  
0161 200 2522

**Mosque:** Sackville Street Building  
**Prayer Room:** Renold Building B26

# Seminars

## Tuesday 16 November

**CHSTM:** "Electric Accidents in History: Medical Technology and the 'New Science' of Electropathology (1890-1950)". Hans Georg Hofer (Freiburg). 4pm, Room 3.29, 3rd Floor, Maths Tower.

**NPCRDC:** "Post Natal Depression and South Asian Woman - local women finding local solutions". Sue Hinder. 2pm, Seminar Room 2, 5th Floor, Williamson Bldg.

**CCSR:** "Are religious people authoritarians in socio-political attitudes?" Reza Afkhami (CCSR). 4pm, 2nd Floor, Crawford House.

**Worldwide Universities Network:** "Integrated Computational Biology: From the Molecule to the Cell". Ron Johnston (Bristol). 5pm, Kilburn Building Oxford Rd.

## Wednesday 17 November

**School of Chemistry:** "Unraveling the Structure of Molecular Wires". Dr Andrew Beeby (Durham). 2pm, Room G.53, Chemistry Bldg.

**School of Chemistry:** "Fragmentation of Tertiary Alkoxides". Dr Ian Watt (Manchester). 4pm, Room G.53, Chemistry Bldg.

**Manchester Centre for Nonlinear Dynamics:** "A Model for Bursting in Linearly Filtered Chaos". Dr Alan Fenwick (Qinetiq). 4pm, Blackett Lecture Theatre, Schuster Laboratory.

**Manchester Medical Society:** "The problem of giving evidence in cases of alleged Child Abuse". Prof Sir Roy Meadow (Leeds). 5.30pm, MANDEC

**School of Law - EUROPEAN MATRIX:** "The Principle of Solidarity in EU External Policy". Prof Marise Cremona (London). 2.15pm, Room 3.07, Williamson Bldg.

**NPCRDC:** "Fumbling Towards the Light - Multidisciplinary care of chronic illness in Australia". Nicholas Zwar. 2pm, Seminar Room 2, 5th Floor, Williamson Bldg.

**Tyndall Centre Seminar:** "UK energy demand and the announcement effects of the UK climate change levy (econometric), and provides evidence of path dependency in energy demand". Dr Terry Barker (Cambridge). 4pm, Room C16, Pariser Bldg.

**Cultural Theory Institute (CTI) "Works in Progress" Postgraduate Seminar:** "CTI Reading Group Activity: Bourdieu" Introduced by Dr. Lisa Adkins. 5pm, Cultural Theory Institute, 178 Waterloo Place.

## Thursday 18 November

**TRDN:** "Preparing for 25%: e-Learning, Partnership and Organisation" 12 -2pm (lunch provided), Committee Room A, Whitworth Corridor. (Booking essential: ring 275 2316 or email Veronique.rizzuto@manchester.ac.uk)

**German Studies, Research Seminar.** "Planes, Cranes and Modern Ideals? The Reich Aviation Ministry and Cultural Policy in the German Dictatorships". Dr Matthew Philpotts (Manchester). 4.15pm, Room WG.20, Humanities, Lime Grove.

**School of Pharmacy and Pharmaceutical Sciences:** "Erythromycin B - an old drug for a new millennium". Dr Jill Barber (Manchester). 4pm, L.Th.A, Coupland III Bldg.

**Imaging Science and Biomedical Engineering:** "The Staging of Oesophageal and Gastric Cancer". Dr C L Kay (Bradford Royal Infirmary). 5.15pm, Lecture Theatre 3, Stopford Bldg.

**Manchester Medical Society:** "Tuberculosis: Back to Basics". All day event, fee £20. To register or for further information contact: Silke Trier on 0161 276 4169 or email silke.trier@cmmc.nhs.uk

**Manchester Medical Society PUBLIC HEALTH FORUM:** Joint Symposium with the Public Health Grand Rounds of the Evidence for Population Health Unit, University of Manchester "Drug Misuse". Prof M Bellis (John Moores), Dr M Donmall (MHSS Trust), Sergeant D Gloster (GMP). 2pm, MANDEC.

**Manchester Medical Society:** "Practising Surgery - A Guide to Survival". Prof A K Maynard (York). 8pm, Chancellors Conference Centre.

**British Computer Society:** "Business Intelligence". Paul Taylor. 6.15pm, Renold Bldg.

**Music Seminar:** "Schubert: a truly great composer?" The Lindsay. 2.15pm, The Cosmo Rodewald Concert Hall, Martin Harris Bldg.

**Postgraduate Discussion Forum for Art History & Visual Studies:** "Incident at Gethsemane: The Arrest of Jesus in the Sources and in North European Art of the Fifteenth Century". Ken Henderson. 5.15pm in Room 1.70, Architecture and Planning Building.

## Tuesday 23 November

**School of Nursing, Midwifery and Social Work:** "A randomised controlled trial comparing telephone versus face-to-face therapist contact in the treatment of obsessive-compulsive disorder". Karina Lovell. 12.30, COPE Room, Coupland III Bldg.

**CHSTM:** "Mad about the Buoy: Trust and Method in the Brent Spar Controversy". Steve Yearley (York). 4pm, Room 3.29, 3rd Floor, Maths Tower.

**Manchester Medical Society - Section of Imaging Symposium:** "Durability of Digital Data". Dr D Leitch (JRUL), Dr N Strickland (Hammersmith Hospital, London), Mr H J Melzer (GE Healthcare Tech). 6pm (registration and coffee from 5.30pm), Health Sciences PG Centre, MRI.

**NPCRDC:** "A survey and audit of the first guides to local health services". Jenny Noble. 2pm, Seminar Room 2, 5th Floor, Williamson Bldg.

**CCSR:** "Religion in Europe: One theme, many variations?" David Voas (CCSR). 4pm, 2nd Floor, Crawford House.

**Worldwide Universities Network:** "Spaces of affect". Derek McCormack (Southampton). 5pm, Kilburn Building Oxford Rd.

## Wednesday 24 November

**Tyndall Centre Seminar:** "Aviation and Climate Change". Colin Beesley (Rolls-Royce). 4pm, Room C16, Pariser Bldg.

**School of Chemistry:** "Flexible Plastic Scaffolds for Metals; Synthesis and Application". Phil Dyer (Durham). 2pm, Room G.53, Chemistry Bldg.

**School of Chemistry:** "Synthetic approaches to Eleutherobin, Huperzine A, and various other biologically interesting molecules". Prof John Mann (Belfast). 4pm, Room G.53, Chemistry Bldg.

**Manchester Centre for Nonlinear Dynamics:** "Liquid Crystal Devices and Applications". Dr Gerry Lester (Exeter). 4pm, Blackett Lecture Theatre, Schuster Laboratory.

**Sociology Seminar:** Round Table Discussion "Historians and Queer Theory (Gender, Sexuality and Culture: New Exchanges). Lisa Duggan, Chris Waters, Matt Houlbrook, Matt Cook, Ann Carden-Coyne, Laura Doan. 4pm, Room 3.51, Williamson Bldg.

**Manchester Medical Society PSYCHIATRY:** Annual General Meeting and Symposium "Pervasive Development Disorders in Adult Life". 2pm (Buffet from 1.15pm), Affinity Healthcare, Cheadle Royal Hospital.

**School of Materials:** "Modification of Material Surfaces to Control Cellular Responses". Dr Rachel Williams (Liverpool). 2.15pm, Room D13, Manchester Materials Science Centre.

**Cultural Theory Institute (CTI) "Works in Progress" Postgraduate Seminar:** Bidisha Ray (Untitled presentation). 5pm Cultural Theory Institute, 178 Waterloo Place.

**Worldwide Universities Network:** "Integrated Computational Biology: From the Molecule to the Cell". Prof Andy McCammon (California). 5pm, Kilburn Building Oxford Rd.

## Thursday 25 November

**School of Pharmacy and Pharmaceutical Sciences:** "Clinical Pharmacy in the Pharmaceutical Industry?" Dr Terri Cameron (OSIP). 4pm, L.Th.A, Coupland III Bldg.

**Medieval Society:** "The Great Dying": A Symposium on the Medieval Plague" 6pm in Room G6, Architecture and Planning Building.

## Looking Back

# The Manchester Museum 1898



**As The Manchester Museum unveiled its newest and largest exhibit this month in the shape of T-rex (see page three), this photograph taken in 1898, shows the winching into place of the skeleton of a young sperm whale. This was then the largest exhibit at 36 feet in length and is still the centrepiece of the Gallery today.**

The whale was found stranded and dying on the Massachusetts coast near Provincetown in 1896 and was bought by the Museum from Ward's Natural Science Establishment in New York state with a donation of £50 whilst the Keeper of the Museum, Professor William Hoyle, was on holiday there. The bones were shipped to Manchester Docks and assembled in three weeks.

Alfred Waterhouse's purpose-built Natural History galleries built in 1888 had, over the years, been added to in a piece-meal manner. Some features including the suspension of the sperm whale in 1898 were an improvement, although the main floor of the gallery had become cluttered by the addition of cases of varying sizes.

A complete refurbishment, in both style and content was carried out in 1990-91, in keeping with the Bird Gallery which was completed in 1981. The most recent and extensive redevelopment of the museum was completed in 2003, funded by the Heritage Lottery Fund, the ERDF and the University. This created additional galleries to display more of the museum's six million artefacts.

The next big push for the Museum is the redevelopment of its Natural History galleries, which were little altered during the capital development project. This project offers an exciting opportunity to integrate issues of social responsibility through interdisciplinary research from across the University, looking at issues of local and global concern related to the environment.

## Noticeboard

### The Teaching and Research and Development Network

The Teaching and Research and Development Network (TRDN) is an interdisciplinary network that exists to promote good practice through dissemination of research on student learning. It is open to all staff involved in the teaching and learning process.

Information on TRDN events and activities are available at [www.intranet.man.ac.uk/rsd/ci/profess/trdn/index.html](http://www.intranet.man.ac.uk/rsd/ci/profess/trdn/index.html)

### Grand Total

The UMIST Auction held during the Day of Celebration on 8 September, raised a grand total of £906.13 for charity.

The proceeds will be split between Marie Curie Cancer Care and The Wood Street Mission.

Thanks go to everybody who took part, with special thanks to Jill Earnshaw and Steve Williamson for all their hard work.

### The University of Manchester Wine Club:

"Burgundy, the 'King of Wines'". 5.30pm, Senior Staff Common Room, Staff House, Sackville Street, £5-£9.

### Want to receive an extra £100?

We are looking for men and women to take part in research studies at the Neuroscience & Psychiatry Unit. Everyone is eligible to apply. We'll send you a simple health questionnaire to complete, which will help us allocate you to the most appropriate project. A researcher will then get in touch with you to tell you the details of their study, giving you the opportunity to ask questions about it before you commit to taking part.

If you are interested, please contact us at: 275 7432 or 275 7670  
[npuvols@fs1.scg.man.ac.uk](mailto:npuvols@fs1.scg.man.ac.uk)



# Classifieds

## HOUSES FOR SALE

**Reddish.** Modern 1 bedrm ground flr flat, with private driveway & lrg back gdn. GCH, dble glazed, alarm. Tastefully dec throughout comprising entrance hall leading to lrg din area. Attractive pine surround Living Flame gas fire, gd size kit, fitted units, gas hob, electric oven. Fitted wardrobes in bedrm. 10min drive to Univ. Viewing essential. £90,000. 0161-257 0856, 07762 774 972 or email: tanya.barlow@manchester.ac.uk

**3 bedrm semi-det.** Exc location, garage, front & back gdns. Central heating. Dble glazed. Lrg rm. Quick sale. £185, 950. 0161-256 4700 or 07944 656 295.

## ACCOMMODATION TO LET

**Withington.** Short term solution. 1rm + box rm to let for 2 mnths from Sept. Rent neg. 0161-434 6139.

**Bramhall/Cheadle Hulme.** F/F 2 bed Bungalow, GCH, newly dec throughout. New Combi boiler, microwave, auto washer etc. Very comfortable & cosy. Small pleasant gdn f & r. Parking for 2/3 cars. Extremely sought after loc. Close to bus/train to Stockport/M/cr. Prof staff only. 0161-485 3112.

**Didsbury Village.** Comfort 2 bed Victorian cottage in quiet cul-de-sac for rent for 6 mnths, initially poss longer. Avail immed. Suit visiting academic/couple. F/F & mod with gch, dble glazing & a modern alarm. Close to shops & transport. No pets & non-smokers only. £775pm + bills & dep. (27)54003 or 07717 171 779.

**Didsbury Village Centre.** 2 bed hse avail from Nov 04. F/F, nicely dec & exc loc for the village & main bus routes to the Univ & Manchester City centre. Suit couple 30+ non-smokers. £700pcm. 0161-445 5725.

**Chorlton.** 3 bedrm hse will be avail from Nov 04. 3 miles to Univ, 2 bathrm, fully central heating, fitted kit. £49pppw. 07887 775 556 after 3.30pm.

**Victoria Park.** Spac f/f luxury 2 bed apart. Walking distance to Univ. Open plan liv rm, laminate flrs throughtout. French windows onto grounds, parking, w/dryer, d/washer ch. £650pcm. 0161-256 1173.

**Glossop, Victoria St.** Spec 2 bed 1st flr flat. 1st let, new kit, new bathrm, neutral dec throughout, cream carpets. Galleried Inge, exc accommodation, must be viewed. 2 mins centre & train station direct to M/cr. Suit prof couple. Non-smoker prfd. £525pcm. 0161-480 8583.

**Padfield Platt St Glossop.** 3 bed stone terr property. Lrg attic conversion. New kit. Exposed beams, stone feature fireplace. Neutral dec. Furn. 10 mins walk station, 2 mins countryside Longendale trail. Non-smoker prfd. £525pcm. 0161-480 8583.

**Aspull, Nr Wigan.** Handy for M61 motorway. This brand new 2 bed top flr Immac apart to let part furn at £525pcm or for sale at £128,000. (27)56980 or 07782 377 011.

**Withington.** Secure 3rd flr flat within grassed grounds incl voicecom dr. 2 dble bedrms, Inge & garage. Newly refurb kit & bathrm. On mian bus routes to Univ/city centre. Prof/couple. £650pcm + bills. 0161-485 5033 or 01422 842 834.

## HOLIDAY ACCOMMODATION

**Puerto del Carmen, Lanzarote.** Spac, stylish apart. Sleeps 5 in comfort. Both dble bedrms ensuite. Sun terrace overlooks beach & sea. From £245pw. Special prices for families. www.casapalmeras.co.uk

**Languedoc-Roussillon.** French village hse to let in spectacular loc. Walks, mountains, rivers, wine in abundance. 30 mins from coast, sleeps 4-6. 07985 168 099 or email from www.geocities.com/roquebrun\_net

**Tuscany holiday cottage to let.** Superb setting near mountains. Lrg gdn, air conditioning. Florence, Siena, Arezzo easily accessible. Ideal for walking, sight-seeing, museums, restaurants, wine tasting, swimming & much more. 0208 699 8883. Details and photos on website: <http://freespace.virgin.net/gp.ck/> Email: [gp.ck@virgin.net](mailto:gp.ck@virgin.net)

**Luxury villa in Orlando, Florida.** 4 beds, 3 baths, with 24ft pool & spa, overlooking lake. Close to

Disney, shops, restaurants & local attractions. Very spac, beautiful furn, 4 poster bed, fully equip, games rm, accommodates up to 8 people + cot. From £400pw. 0161-439 0408 or email: [kate@mickeysorlandovilla.co.uk](mailto:kate@mickeysorlandovilla.co.uk)

**Andalucia-Gaucin.** Beautiful white village, uniquely designed villa, built as 3 apart & 2 cottages with central courtyard & pool. Sleeps 2-13. Breathtaking views to Gib & N Africa. 07801 341 856 or [www.thespanishvilla.com](http://www.thespanishvilla.com)

**For sale 2 wks' timeshare** at Gold Crown resort 'Sunset Harbour' Tenerife. Wks 16 & 17 (end of April). 1 bedrm spac apart with lrg balcony, sleeps 4. Sold in perpetuity £4000 ono. (27)54035.

**For sale 3rd flr det rustic hse.** 30 mins north of Lucca in Tuscany. Brand new fully fitted kit/din rm. 2 lnges, 4 bedrms (1 en-suite), bathrm/wc, laundry rm, sun terrace. New central heating system. £130,000. Photos can be emailed or posts. 01457 876 871 or email: [soggybaba@virgin.net](mailto:soggybaba@virgin.net)

**Georgian Country house** on Shropshire/Welsh border. About 1 hr from Manchester. Private gdns, lovely trees. Sleeps 16 in 8 bedrms, 6 bths. Luxury. Ideal for family & gatherings. Email: [george.dowswell@man.ac.uk](mailto:george.dowswell@man.ac.uk)

## CARS/MOTORCYCLE FOR SALE

**VW Polo 1995 N Reg.** 1300CL, only 34k miles. Taxed & MOT, FSH, electric windows, central locking, exc cond. £2,250. 0161-442 9763 after 6pm or 07791 169 119.

**Rover 214 Si 16v K Reg 1993.** Blue hatchback, 3 dr. Tax & MOT till May 05. £120. (27)50481 or email: [stev@hep.man.ac.uk](mailto:stev@hep.man.ac.uk)

**Honda Civic 1.5 Lsi.** Auto, 3 dr hatchback. M Reg, 57k miles. FSH. Very gd cond. 6 mnths road tax. MOT Jan. Sale due to overseas location. £1,200. 07817 908 180.

**Toyota Corolla GLI 1.3 L Reg.** 92k miles. Red 4 dr saloon. 10 mnths MOT. Full Toyota service history. PAS, R/C. Tax till end Feb 05. Gd cond. £1,050. 0161-200 34 83 or 07796 466 777 or email: [martyn.duffy@mbs.ac.uk](mailto:martyn.duffy@mbs.ac.uk)

**Toyota Corolla 1.4 GS 2001.** Y REG, 23k miles. 5 dr, silver. 1st owner. Exc cond. SH. alarm, air con. Bargain for urgent sale. £5,700ono. 0161-614 9869.

**Toyota Corolla Sportif.** 3 dr hatchback R Ref, red. 2 lady owners. 65k miles, very well looked after. Immac cond. £2,800 ono. (27)56980 or 07782 377 011.

**Toyota Corolla 1.3 M Reg.** 1 owner, 1 yr road Tax, MOT till Oct 05. New clutch, new battery, gd runner. £750. (27)5210 or 0161-773 5635.

## MISCELLANEOUS SALES

**Quality Hi-Fi.** NAD 522 CD player, NAD 712 amp/turner. Tannoy M2 speakers, Apollo speaker stand. Genuine reason for sale. Exc cond. £250 the lot, will sell separately. Email: [llyr.cameron@manchester.ac.uk](mailto:llyr.cameron@manchester.ac.uk)

**Lean-to concrete panel garage.** 24ft long by standard width. Exc cond. Cost £1,600 when new. Must be seen, bargain. Will accept any reasonable offer. Buyer to remove. (27)54094.

**Looking for a brand new sofa** in time for Xmas? Lrg 3 seater in natural/honey colour, Never been used surplus to requirement. Viewing avail on campus. £450. 64049 or email: [a.gregory-2@manchester.ac.uk](mailto:a.gregory-2@manchester.ac.uk)

**Fridge/freezer.** Gd working cond. 4 star freezer compartment. 50cm wide x 70cm deep x 125cm high. £40. 0161-445 9878.

**Britax "Eclipse" forward facing car seat.** Grey check. Gd as new in exc cond. Suitable for babies & toddlers from approx 9 mnths to 4 years. Adjustable seat positions. £40. (27)52102.

**3 seater + 2 seaters dark green leather sofas.** Gd cond £20. Chinese carved wooden coffee table, glass top with 6 stools. Gd cond. £200. 0161-614 9869.

**3 position wooden cot & breathable mattress,** gd cond. £20. Winnie the Pooh bouncy chair with baby headpiece, hardly used. £9. Bath bay (white). £2. Baby growbag (sleeping bag, pink gingham, up to 6mnths), unused. £10. Email: [Averil.Gould@manchester.ac.uk](mailto:Averil.Gould@manchester.ac.uk)

## WANTED

**Car sharing.** Travelling everyday between Liverpool Uni. Needs someone to share the driving & the petrol. (27)50728, 07917 068 408 or email: [erika.setzu@manchester.ac.uk](mailto:erika.setzu@manchester.ac.uk)

**Motorhome.** Small, low top or rising top. Low mileage, Gd cond. 0161-428 8055.

## SERVICES

**Ian Hancock,** BDS, Dental Surgeon, 180 Oxford Road (nr Manchester Museum). Courtesy, quality, safety. Same day attention for genuine emergencies. 0161-273 8484.

**Qualified/Exp. Joiner.** All types of carpentry, woodwork, joinery. Tiling & plastering. Kitchen, bedroom & office fitting. New windows, doors, ceilings. Hardwood/laminate flooring. Skirting & dado rails, stairs & staircases. Plumbing & electrics. Bricklaying & masonry. Problems discussed. No call-out charge. Free estimates. 0161-865 9647 (answering service) or 07743 324 169

**Typesetting,** document formatting & other documentation services provided for work on theses, reports, specifications, CV's etc. No job too large or too small. Professional services, reasonable rates. 0161-231 4648.

**Specialist advisers to academics:** Colin Coates & Partners offer tax & accounting services inc Professorial salary review & retirement covering the Universities Superannuation Scheme. 01934 844 133, email: [info@ccptax.com](mailto:info@ccptax.com) or website: [www.ccptax.com](http://www.ccptax.com)

**House Improvements.** From decoration to carpentry finishes. Wood floors refinished, plastering, doors, architraving, skirtings, shelving, storage/wardrobe units. Design & fix. Experienced tradesman. 0161-223 0125 ansaphone & fax.

**Painter/Decorator.** Good quality painting & decorating, inside/outside work undertaken, tidy workman. 07840 266 473.

**Polyester Graphics Ltd.** Digital full colour + b/w copying, lrg format poster printing, personalised printer t-shirts, mouse mats, polo shirts & sweat shirts. We also stock postage stamps & a selection of stationery. Small company offering a personal, quick & friendly service. Free & easy parking. 0161-443 1653 or email: [polystergraphics@beclck.com](mailto:polystergraphics@beclck.com)

**Counselling/Psychotherapy with Chartered Psychologist,** UKPC accredited NLP Psychotherapist and qualified Life Coach with 20 years' consultancy experience. Psychometric Assessment available. 0161-865 3193 or email: [fokkina@onetel.com](mailto:fokkina@onetel.com)

**Fully qualified electrician,** 25 years' experience in all aspects of electrical installation & maintenance. Security systems for domestic & commercial premises. Free estimates. 0161-747 9443 or 07952 050 825.

**Website Creation.** From design to creating the website to getting the site online, all services associated with websites avail. 6 years' experience in the web industry. 0161-226 1935 or email: [caroline.doidge@bbengland.com](mailto:caroline.doidge@bbengland.com)

**Attention Services Provided.** Transcription of research, interviews, etc. All subjects undertaken at competitive rates. D C Secretarial Services on 01254 385 483 or 07903 318 055 or email: [diane@hotelhouse.freeserve.co.uk](mailto:diane@hotelhouse.freeserve.co.uk)

**Tutor for English & presentation.** Need help with use of English or presentation. Planning your dissertation, thesis or paper? I provide a professional checking service on word-processed scripts for a range of academic subjects, delivered to your PC, quickly, efficiently & at a reasonable price. 0161-612 9969 or reply by email to [whiejbroek@ntlworld.com](mailto:whiejbroek@ntlworld.com) £10 per 1000 words subject to quotation.

**For all your travel requirements.** ABTA 90740. 0161-764 5651 or 0845 058 7328. Email: [carol.warburton@travelcounsellors.com](mailto:carol.warburton@travelcounsellors.com) or [www.travelcounsellors.com/carol.warburton](http://www.travelcounsellors.com/carol.warburton)

**Photographer,** Functions, PR, Events. 0161-490 7559 or 07808 540 117.

**MANCHESTER**  
1824

The University of Manchester

**FREE PARKING**

**Special Academic Hotel Rate**  
**£49.95 B&B**

**Chancellors**  
Hotel & Conference Centre

All rooms are en-suite, and have TV, direct dial phone and internet access.

For reservations, please ring  
**0161 907 7414**  
Quoting "Academic Specials"

For further details, contact  
Chancellors Hotel & Conference Centre  
Chancellors Way, Moseley Road  
Fallowfield, Manchester M14 6NN  
Email: [chancellors@man.ac.uk](mailto:chancellors@man.ac.uk)  
[www.chancellorshotel.co.uk](http://www.chancellorshotel.co.uk)

Terms and conditions: The quoted rate applies only to bookings of no more than four per night and is subject to change without notice.



**MANCHESTER**  
1824

The University of Manchester

**An impressive venue for any occasion**

We've got the **right** location.

When you are organising a conference, training session, banquet or party, our facilities and experience will make a major difference.

For civil weddings, receptions, sporting events and even hotel accommodation, you need look no further.

For more information, call Sarah Evans on:  
**0161 306 4108**  
or visit [www.meeting.co.uk](http://www.meeting.co.uk)



**Burbidge Joinery & Construction**

**Quality UPVC Windows & Doors**

All Windows & Conservatories are individually made to each customer's specified requirements. A family business with over 24 years' experience. Laminate and solid timber floors supplied & fitted.

For free advice or information contact: Paul Burbidge (City & Guilds qualified Joiner) 0161-494 5228

**DELTA TRAVEL**

Serving The University of Manchester for 30 years  
**0161 274 3060**

Flights worldwide, UK and overseas rail, hotel reservations, car hire, package holidays, weekend breaks, and more...

University Precinct, Oxford Rd, Manchester M13 9RN  
Tel: 0161 274 3060 email: [btsales@deltatravel.co.uk](mailto:btsales@deltatravel.co.uk)  
Fax: 0161 274 3555 Web: [www.deltatravel.co.uk](http://www.deltatravel.co.uk)

**Binding Theses & Reports**

- Quality materials
- Craftsmanship and competitive prices
- Latest technology to ensure perfect service

For further information please ring the Library Binding and Preservation Department  
(27) 53733 Monday to Friday 0900-1600 or the  
Library Thesis Binding and Sales Point (27) 53749 outside these hours.

**u-print.com**

**Printing for You on the North Campus**

Full Colour and Black Only Digital Printing & Copying  
Hardback & Softback Binding

International Fax Bureau Service  
Design for Posters, Flyers, etc.  
T-Shirt & Mouse Mat Printing

Barnes Wallis Building  
The University of Manchester  
Sackville Street  
Manchester

Internal Telephone 63269  
Email (0161) 306 3269  
Web contact@u-print.com  
[www.u-print.com](http://www.u-print.com)

**Luther King House**

"Cosy nights, attractive prices and friendly staff"

Set in 2 acres of private grounds just a little way from the Universities, this secluded and unique location offers superb value for money, relaxing accommodation. En-suite bedrooms from only £21.00 p.p. (twin) or £34 (single).

Delicious evening meals in our dining room. Residents' bar.

Class 1 disabled access and ETC \*\*\*  
see [www.lkh.co.uk](http://www.lkh.co.uk) or tel: 0161 224 6404

## Just The Job

# Anna Malone

## Trainee Disability Adviser

**If you love to surf then there's arguably only one place in Britain to be – the South West coast, which is why every weekend Trainee Disability Adviser Anna Malone grabs her surfboard and heads for North Devon.**



Anna took up the sport just over a year ago and, much like her new job, she's still getting to grips with it.

"I love being by the sea, and I travel down to Devon most weekends," she says.

Anna started working in the Disability Support Office, which provides advice and support to disabled students, in February after spending a year as an Administrative Secretary in the Department of Psychology. It was there she realised how much she enjoyed working with students.

"I love dealing with students and I was finding that more and more in that role, I was dealing with students who had disabilities or needed support during exam times, and I found it really rewarding. Then this job came up, I applied, and I got it," she says.

At the moment Anna is still learning the ropes. Along with the other Disability Advisers, Anna deals with student enquiries and meets with students to identify their support needs. She also assists students

with applications to their funding bodies for the Disabled Students Allowance.

"Students may require adapted materials or equipment such as dictaphones to record lectures, or screen readers for their computers, which can be expensive. What we are able to do is assess their needs, and to help them apply for LEA grants," she says.

In addition to helping with the day to day running of the office Anna's trainee programme involves her producing a portfolio of reflective writing about her experiences, networking with other Disability Advisers in the HE sector and producing a project on 'issues facing disabled students in higher education'.

There are currently over 2,200 disabled students registered at the University. These include students with Specific Learning Difficulties (such as dyslexia), mental health difficulties, visual impairments, hearing impairments, medical conditions and mobility difficulties.

"You cannot make assumptions from the nature of a student's disability about

their support needs. Two students with the same disability can be affected in completely different ways," says Anna.

Students are welcome to drop-in to the Disability Support Office at any time, although Anna would recommend that an appointment is made wherever possible.

Looking to the future, Anna is hoping to complete her training and become a fully-fledged Disability Adviser early in 2005, and on the beach front, she's got her mind set on somewhere much more exotic than Devon.

"I love being by the sea and hope to go to get the chance to travel to somewhere a little more exotic than Devon in the near future. Sri Lanka or New Zealand are both places I would like to visit."

The DSO, located in room LG27 on the Lower Ground Floor of the John Owens Building, is open from 9am-4.30pm (Mon-Thurs) and 9am-12pm (Friday). For more information about what they do please visit the following web address.

[www.manchester.ac.uk/disability](http://www.manchester.ac.uk/disability)

Next Issue is 29 November - this will be the last issue before 24 January 2005

## News Contact

### News and story ideas

Lisa McCarthy

Telephone 0161 275 2112

Email [uninews@man.ac.uk](mailto:uninews@man.ac.uk)

Deadline 19 November

## Events Contact

### Events and listings information

Philippa Adshead

Telephone 0161 275 2922

Email [unievents@man.ac.uk](mailto:unievents@man.ac.uk)

Deadline 19 November

## Adverts Contact

### Ads and distribution queries

Lorraine Harrop

Telephone 0161 275 2113

Email [uniads@man.ac.uk](mailto:uniads@man.ac.uk)

Deadline 19 November