

UniLife

1st November 2004

Volume 2 Issue 4

Historic Day as University is granted Royal Charter



NewsDigest

Contents

- 3 Royal Appointment
- 4 News
- 7 Research
- 8 Profile
- 10 People
- 12 Inauguration of
The University of Manchester
- 15 President's Presentation
- 16 Campus Developments
- 18 What's On
- 20 Seminars
- 21 Noticeboard
- 22 Classified Ads
- 24 Just the Job

HM The Queen presents Royal Charter to Co-Chancellor Anna Ford.
Photo by Howard Barlow

A summary of the key news in this issue of UniLife:



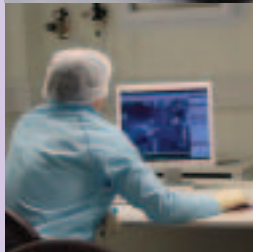
3

The University of Manchester was officially launched on 22 October when HM The Queen visited the campus to grant it's Royal Charter which was presented to Co-Chancellor Anna Ford. This is the first Royal Charter to be granted to a University this century.



5

Palaeontologist Dr Phil Manning explains how dinosaurs used their feathers to help them move with the aid of one of the world's fastest production cars for a new BBC series.



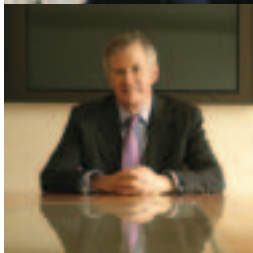
7

Scientists at the University have discovered the world's first single atom-thick fabric, which reveals the existence of a new class of materials and may eventually lead to computers made from a single molecule.



8

Profile of Steve George, General Secretary of The University of Manchester Students' Union, now the largest students' union, with a student body of more than 36,000.



15

President and Vice-Chancellor Professor Alan Gilbert gave a Foundation Day presentation to staff in the Whitworth Hall on 22 October following the Queen's visit. He said the ambitious plans in the Manchester 2015 Agenda were of "national and international significance" as well as being crucial for the North-West.

Royal Appointment



Photo by Howard Barlow

Even a typically wet Manchester day couldn't dampen the spirits as The University of Manchester welcomed Her Majesty The Queen last week.

HRH visited the University on Friday 22 October to bestow a Royal Charter on the new institution created by the merger of the Victoria University of Manchester and UMIST. The University of Manchester is the first university this century to receive a Royal Charter.

The Charter was handed over to Co-Chancellor Anna Ford in an Inauguration Ceremony held in the Whitworth Hall. The ceremony was witnessed by around 500 invited guests from the University and the wider Manchester community.

In the ceremony, the University's President and Vice-Chancellor Professor Alan Gilbert also read the Foundation Declaration and honoured the four founders of the new University – Professor John Garside, Professor Sir Martin Harris, Professor Tom Hinchcliffe and Dr Rodger Pannone.

Following the ceremony, the Queen took the opportunity to meet with a group of students representing the University's four Faculties, before attending a drinks reception and lunch.

After lunch she signed the University's Visitor's Book and received a posy, before undertaking a walkabout in the Old Quadrangle where she met students and staff of the University. (pictured)

In the afternoon President and Vice-Chancellor Professor Alan Gilbert gave a Foundation Day Presentation to staff followed by a reception (see page 15).

For a full report of the Queen's visit, see pages 12-14.

News



The Manchester Museum was recently shortlisted from hundreds of applicants for two national awards from the Royal Institute of British Architects (RIBA).

Museum Shortlisted

Although it didn't win, it was in good company in its two Special Awards categories: The Crown Estate Conservation Award and the RIBA Inclusive Design Award. The first was won by The King's Library at the British Museum and the second by the City of Manchester stadium.

THE RIBA Special Awards are chosen from RIBA Award Winners and are judged by panels including specialist judges who visit the shortlisted buildings.

Museum Director Tristram Besterman, attended the awards dinner in London on 16 October with architect Ian Simpson, along with key political, arts and architectural figures.

The multi-million pound redevelopment of the museum, which was completed last year, now provides improved visitor facilities and access including a café and new galleries to display more of the Museum's fascinating collections.

Tristram said: "Whilst I regret not being able to brandish a prize victoriously in this occasion, the inclusion of The Manchester Museum for two awards at so prestigious an event, reflects well on the University, and underlines the importance of commissioning the highest quality of design as we build the new campus."

www.museum.man.ac.uk



Peter Sanderson, UMIP Chairman

UMIP, (The University of Manchester Intellectual Property Ltd), the University's wholly owned Intellectual Property commercialisation company formed on 1 October, has got off to a flying start by realising a lump sum from the sale of shares arising from the re-structuring of one of its spin-out companies, UMITEK.

UMIP Scores Early Goal

UMITEK is a successful consulting and product-based company operating in the field of energy management and devices, corrosion and protection services and software and with a sales turnover of £8m p.a.

The deal, worth a substantial amount of cash to the University, allows UMITEK to move to its next business plan phase which is set for entrepreneurial growth and increased drive on its existing business and more opportunities to acquire new businesses and inventions. The University will continue to hold a significant number of shares in UMITEK.

Peter Sanderson, UMIP Chairman, says that the opportunity to sell some shares and at the same time launch the company and its management into a new era by scaling down UMIP's own involvement in UMITEK, makes perfect sense in the university spin-out process; "It allows us to reinvest in earlier stage companies, where UMIP's expertise lies" said Peter. In addition, UMITEK provides another route to market for the University's researchers to pursue, if they have inventions or research and consultancy interests that match UMITEK's expertise, for example in the oil and gas and energy sectors.

www.umitek.com

News

'Noble' Prize for Phil

Curator of Palaeontology at the Manchester Museum, Dr Phil Manning, had the enviable task of driving around the city in a Noble M400 car last month as part of the filming for a new BBC series on dinosaurs.



But what does one of the world's fastest production cars with a top speed of 200 mph have to do with dinosaurs?

Experts know that some dinosaurs had feathers and one of the programmes looks at how they would have used them. It is thought that they provided insulation and also helped them move around providing streamlining, drag and also enabling them to steer - like ailerons on an aircraft.

Phil said: "It wasn't just an excuse to get a nice car for a few days, we thought it would be an accessible and very visual way of explaining how dinosaurs would have used their feathers. The car has a huge rear spoiler which creates a downward force, helping to keep it firmly on the road at high speeds. The concept of a predator as fast, agile and streamlined is just like a car."

The programme scheduled for broadcast next summer, is a new series which builds on the highly successful "Walking with Dinosaurs". It is to be presented by Bill Oddie and includes experts like Phil Manning. Made four years ago, the impressive computer generated images used in that production have since been surpassed. This new programme will use the latest technology and cutting edge palaeontological research to investigate what we know already about dinosaurs.

School of Chemistry Opens

The University of Manchester's School of Chemistry was officially launched on 15 October by former member of University staff and eminent scientist Professor, the Lord Lewis of Newnham.



When combined, the new School will be one of the largest in Europe, with more than 600 undergraduates and more than 60 academic staff. Work will shortly begin on an extension costing over £13 million that will provide new state-of-the-art teaching laboratories and allow both of the former departments to co-locate on a single site from 2006.

Head of School, Professor Paul O'Brien said: "The formation of the new School will bring great change. We are aiming to integrate both operations on one site in an extended and refurbished building,

with the addition of a new teaching wing, at a cost of £13m.

"We are also making significant investment in new posts, intending to become one of the very best schools of Chemistry in Europe, as well as one of the largest. Staff from the School will also make significant contributions to research in two new University research centres, the Manchester Interdisciplinary Biocentre and the Photon Science Institute."

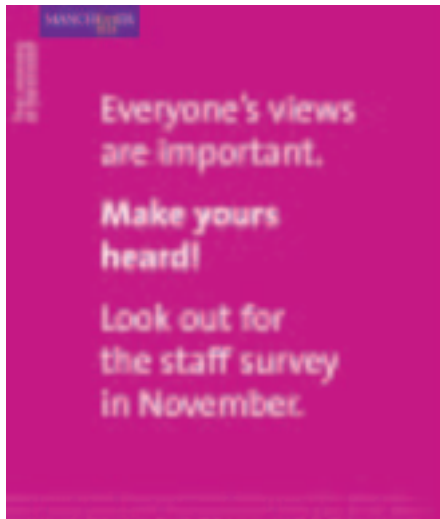
In its first year, the School will admit over 210 new first degree students, more than any other Chemistry School in the UK.

Professor O'Brien said: "We look forward with confidence to the challenge of building the new School and of adding to our distinguished record of achievement."

Professor Lord Lewis of Newnham, Warden Emeritus of Robinson College, Cambridge, is an eminent Professor of Inorganic Chemistry and a major contributor to the development of national and international science policy. He was Professor of Inorganic Chemistry at the Victoria University of Manchester in the late 1960's and early 1970's.

From left: Professors John Perkins (Faculty Dean), Lord Lewis of Newnham and Professor Paul O'Brien

News



What do you think?

The University's 9,000 staff have the opportunity to have their say in a campus-wide survey which is being launched later this month.

The results of this anonymous and confidential survey will be used to directly inform the University's operational planning, with the results publicised in 2005.

Questions will cover key areas such as job satisfaction, training and development, communications and effective management and administration. It is intended that the survey will be carried out every two years so that the President and his Senior Management Team can

listen to staff and use the feedback to influence how the University is run.

Those staff who have computer access will receive an e-mail message when the survey is 'live' with a link to the web page. They can then complete the survey online or – if they prefer – request a paper copy. Staff who do not have computer access will be given a paper copy, but they also have the option to complete the survey online if they wish.

Travel to Work

More than 200 staff and students attended the 'Travel to Work' events held in the Renold Building and the Visitors Centre recently.

Feedback from the events was so great that plans are now underway for a new steering group focusing on how to improve public transport for staff and facilities for people who cycle to work.

Ian Goodwin, Higher Education Precinct Travel Co-ordinator, from Central Manchester and Manchester Children's University Hospitals NHS Trust, who organised the events, said: "The events they were well worth it, gave staff an opportunity to see what options they had regarding travelling to work and to raise any problems or difficulties they may have been encountering."

"There was a lot of feedback about public transport and cycle facilities, I aim to

tackle these two points constructively by forming two steering groups.

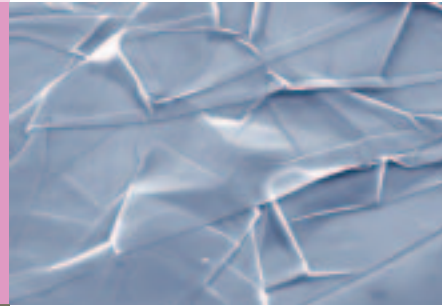
On the days, staff were offered public transport information by representatives from GMPTE, First Northwestern and the Metrolink and were also given the opportunity to register their details on a new online car share scheme called 2scompany (www.2scompany.org.uk)

The Travel to Work initiative was organised by the Higher Education Precinct Travel Group, of which The University of Manchester, The Manchester Metropolitan University and the Central Manchester and Manchester Children's University Hospitals NHS Trust are members.



Research

Nanofabric is world first



Researchers at The University of Manchester and Chernogolovka, Russia have discovered the world's first single-atom-thick fabric, which reveals the existence of a new class of materials and may lead to computers made from a single molecule.



The team led by Professor Andre Geim at The University of Manchester, has succeeded in extracting individual planes of carbon atoms from graphite crystals, which has resulted in the production of the thinnest possible fabric - graphene. The resulting atomic sheet is stable, highly flexible and strong and remarkably conductive. The nanofabric belongs to the family of fullerene molecules, which were discovered during the last two decades, but is the first two-dimensional fullerene.

In the quest to make the computer chip more powerful and fast, engineers strive to produce smaller transistors, shortening the paths electrons have to travel to

switch the devices on and off. Ultimately, scientists envisage transistors made from a single molecule, and this work brings that vision ever nearer.

In terms of applications, the sort of quality demonstrated by graphene can only be compared with that demonstrated by some nanotubes. Professor Geim commented: "As carbon nanotubes are basically made from rolled-up narrow stripes of graphene, any of the thousands of applications currently considered for nanotubes, renowned for their unique properties, can also apply to graphene itself."

Although the researchers are currently dealing with patches of graphene that are about ten microns across, Professor Geim commented: "Computer engineers will need graphene wafers a few inches in size, before considering graphene as "the next big thing". However, all the omens are good, as there are no fundamental limitations on the lateral size of carbon nanofabric." Dr Novoselov added: "Only ten years ago carbon nanotubes were less than a micron long. Now, scientists can make nanotubes several centimetres long, and similar progress can reasonably be expected for carbon nanofabric too".

Weather and War



Dr Vladimir Jankovic, a lecturer in the Centre for the History of Science, Technology and Medicine at the University has recently completed filming for five documentaries to be screened later this year on the Discovery Channel.

The series uses location filming, lab experiments in climate chamber and wartime weather conditions to document how armies have won or lost wars through their special relationships with

the weather. Military powers have historically understood the importance of weather conditions in helping them to overcome enemies, and Vladimir, a military meteorologist, battled all elements in his quest to survive the worst weather imaginable.

Vladimir braved the most extreme weather on earth: from wading through mud craters in lashing storms to being blinded by the searing desert Khamsan wind and being

battered by a Caribbean cyclone in order to complete his filming. He said: "My time spent chatting with the local military and weather guides made the filming a truly extraordinary physical and mental experience - not least in that it involved trying out extreme emergency methods against dehydration, such as the consumption of distilled urine which the British Long Range Desert Group used in the Lybian desert in WW2."

Profile

“ It’s very exciting to be a student here – and even more exciting to hold this office

”

Genuine George

A gruelling election campaign. A larger-than-usual turnout. A recount. The outcome – a narrow victory for George. Sounds familiar? But this George is Steve George - and his Presidency is of the United Students. To be exact, his position is General Secretary of The University of Manchester Students Union (UMSU). We stopped using the traditional title of President here many years ago, at a time when student leaders wanted to be more aligned with the trade unions.



So, now, he is enjoying his sabbatical year in office as the first student leader of the new merged University: the figurehead of a 36,000-strong student body, the biggest in the NUS. He’s 21, 6ft 4, athletic, amicable, ambitious - and has a genuine concern for student affairs and for what he calls “genuine participation”. The latter view is why he was so pleased that a lot of students, related to previous years, participated in the election – more than twice as many as before. “I was elected with a record number of votes, which is very encouraging, even though we did have a recount,” he says.

He describes the six “gruelling” weeks of the final election campaign for him and his hard-working team as “the hardest thing I’ve ever done”. For the last two weeks he put in 20-hour days. He was also doing Finals (English Literature and American Studies) – and still managed to get a 2:1. He won the election by 85 votes out of 3,800 cast.

Steve was interested in union politics from the start – “I always wanted to hold office,” he says. Now he’s got there, he couldn’t be happier. “I worked hard, but

this is a great job,” he says. “I do feel very privileged to have it, especially this year, which is monumental for the University and the students. It is very exciting to witness the changes at close quarters. I think the merger was absolutely the right way to go. It gives us all great opportunities. It’s very exciting to be a student here – and even more exciting to hold this office.”

Of course, one impact of the unification is that there are two campuses to look after, two centres to maintain. He is genuinely concerned that all students should be looked after, which is why, for one thing, that he was so keen to get the free linking bus service going. And he and the Executive divide their time between the Oxford Road building and the partner office.

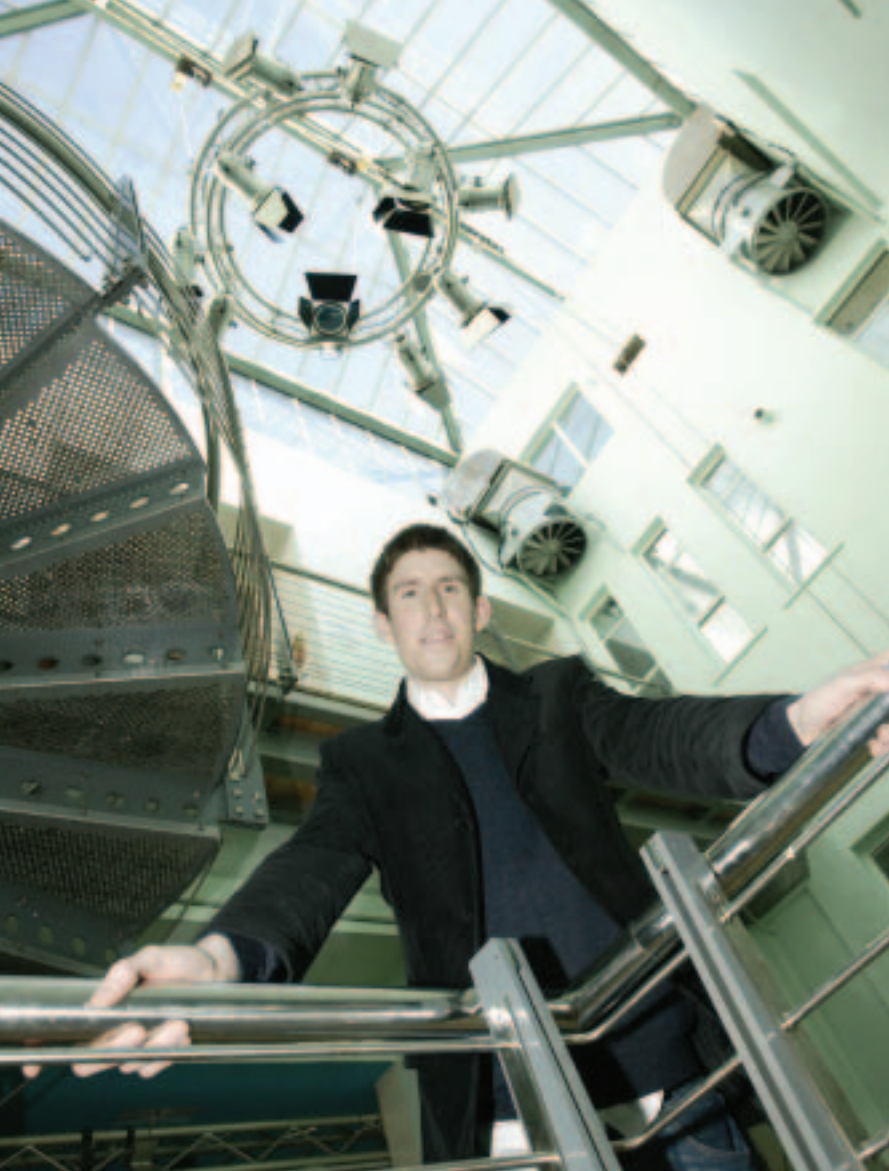
“It’s a bit like riding two horses, but it’s manageable – and important,” he says. The job is, of course, many-faceted, ranging over the administration of a business with a turnover of £6 million a year, being the first point of contact between the University and the student body (“relations between the two are very good”), representing Manchester

nationally; playing his part in organising protests when appropriate; involving himself in all the issues exciting student (and public) interest, not to say agitation.

And there are some Big Issues. “There has been a sea change in student politics in the last couple of years,” he says. “We have a much more politically active union again now, triggered by such issues as the anti-war movement and top-up fees. We took hundreds to London to join in the big protest march against the war in Iraq – and we helped to mount the biggest protest outside London, here in Manchester.”

Other Big Issues on campus embrace fair trade, the Israel-Palestine conflict, abortion, student finances – and the rise of the BNP here, which he takes very seriously. Such issues take up a lot of effort. On the question of fair trade, for example, the Union shop has undergone a complete ethical consumer audit to make sure that they carry nothing produced by non-environmental methods or by ethically unacceptable working practices.

Then there is the vital business of student advice and welfare. “The welfare



team have never been so busy, especially in the area of student debt," he says. Also, he points out, students today are wiser to their rights as consumers than they have ever been.

Of course, the Union is also traditionally a fun place, a hive of social activity, especially with Academy being a major venue for bands. "Booking bands is no longer a job for a sabbatical officer," says Steve. "We have a full-time events manager, supported by a team." Mind you, even before the Academy was built, the Union was always a significant calling point for leading bands and performers. In Steve's office, there are printed posters showing the great musicians of the past who have appeared there – and what they were paid. Going back to the '60s, there was Slade (£60 fee), the Merseybeats (£320), Pink Floyd (£450), the Jimi Hendrix Experience (£500) and even, in 1967, Stevie Wonder (£600).

The music scene is close to Steve George's heart. "I love music of all kinds," he says. "I've been in more bands with silly names than I care to remember." He's a drummer of some repute, and his girlfriend,

Rachael, is a cellist. Their interest spans everything from Cuban blues to classical.

The musical interest, like the political, really took off when he went to Swindon College in his native Wiltshire. It was there, too, where he had his interest in Manchester aroused. He had two teachers in particular who influenced him there – John Hollis, a Manchester graduate who taught English and extolled the virtues of the Victoria University, and Bill Cullen, who taught politics. "They both inspired me," he says.

In 1999, his political interests were boosted when he was selected, as a Euro Scholar, to represent the UK at the European Youth Parliament in Strasbourg, where he got to meet the EC President and several MEPs. That clearly gave him a taste for a possible political career.

So far, so good then. He has reached the height of his ambition – so far. And, for now, he is looking no further ahead than doing a thorough job in what he acknowledges to be a privileged, if demanding, position.

CV

Name
Stephen George

Position
General Secretary of The University of Manchester Students' Union

Education
2004-2005
General Secretary of The University of Manchester Students Union 2004-5

2001-2004
The Victoria University of Manchester

BA (Hons) English Literature and American Studies 2:1

1999-2001
Swindon College, Wiltshire

1999 Euro Scholar

Selected to represent the United Kingdom at the European Youth Parliament in Strasbourg, France

Other achievements

- Head of Student Unions 'Environment and Ethics campaign', established to facilitate and promote awareness of both local and global environmental issues.
- Journalist for Student Direct.
- Active member of 'Community action Manchester' non-profit organization aimed at providing help and community support. Activities have included restoring local buildings such as community centres, schools and childcare facilities.

People



Excellence in Research Admin

Colin Cooper, Head of Research Operations, has been awarded the Hartford – Nicholson award by the Society of Research Administrators International, which recognises his work within the Society. Colin is co-chair of the international committee and is the first ever recipient of the award who is not working in a North American university or Research Institute.

Commenting on his recognition, Colin said: "It is nice to receive

acknowledgement of our activity in research administration both at the national and international level. It is vitally important in the new merged University that we maintain this level of service in research administration; we have some very challenging targets for growth in the research area as well as new mandatory requirements due to changes in the Dual Support system and the onset of electronic submission."

Chance, Random, Risk

The Museum café was turned into a casino for the latest talk in the successful series provided by Café Scientifique, an initiative which aims to bring science to the public.



Entitled 'Chance, Random, Risk', the interactive discussion was about the meaning and use of genetic information using a gambling analogy. Staff and members of the public were invited to play their cards right in the 'Casino of Life, Choice and Destiny'.

Players could place their chips on certain 'risks', they did this as their younger, more reckless selves, their present selves and their future selves. The aim was to have as many chips left at the end as possible.

The gambling analogy served to illustrate two important points: that we are given a pre-determined set of genes and that these interact with the environment, but that some of us have genes which mean we get away with certain things such as lung cancer, for example, even if we smoke.

They also played a version of rummy with specially designed playing cards which had been marked with pre-determined risks.

The talk was given by Bill Ollier, Professor of Immunogenetics at the

University and Director of the Centre for Integrated Genomic Medical Research (CIGMR) whose research focuses on investigating the genetic basis of common complex disorders.

Presenting the event were writer Mandy Precious who scripted a short play on whether prior knowledge of our genetic predisposition is useful and artist Elaine Bennet who designed the cards. The event was held in conjunction with the Centre for Continuing Education with support from the Wellcome Impact Trust.



People

Jennie and Rebecca

Jennie's Fundraiser

PhD student Jennie Frain recently raised £200 with a fundraising dinner in her Department for Dr Kershaw's Hospital in Royton.

Her grandmother died in August following cancer, Jennie said: "She was very supportive of me throughout the first two years of my PhD and I wanted to raise some money for the hospice which looked after her in the last three weeks of her life."

Staff and fellow students from the Division of Laboratory and Regenerative Medicine took part and Jennie's sister Rebecca contributed to the success, as people came to say 'hello' as well as eat!



Laurie Taylor Lecture

All staff are invited to attend a free lecture and drinks reception at the University organised by the Times Higher Education Supplement (Times Higher) on Thursday 25 November in the Whitworth Hall.

Given by Times Higher columnist Professor Laurie Taylor, who writes the humorous back-page column as Vice-Chancellor Professor Lapping of the fictitious University of Poppleton, the lecture entitled 'Thrusting Forward: The Laurie Taylor Guide to Maximum Performance' is the first of its kind to be organised by the publication.

Laurie Taylor also presents Thinking Allowed and Room for Improvement on BBC Radio 4. He began his broadcasting career as a regular contributor on Robert Robinson's Stop the Week. He was educated at St Mary's College, Liverpool, the Rose Bruford College of Drama in Kent and Birkbeck College, University of London where he obtained his BA. He then went on to do an MA at Leicester University.

Laurie's career began with a stint as a librarian, after which he became a professional actor, then an English teacher before joining the Sociology Department of the University of York where he went on to become Professor of Sociology. He is

a consultant, writes for newspapers and magazines, contributes to television programmes and is an accomplished public speaker.

Earlier the same day, the Times Higher also require the participation of a number of staff in a focus group. This will be aimed at helping to shape the content of the newspaper and to ensure it carries relevant coverage, reflecting the interests of those working in the higher education sector.

The focus groups were successfully trialled in Manchester last year and went on to be used at other universities leading to some key changes in the Times Higher.

Anyone who would like to attend the lecture or take part in the focus group should contact lecture@thes.co.uk with their details - or call 020 7 782 3396.

Staff may take part in both if they wish, places will be issued on a first come first served basis.





Friday 22 October was a historic day for The University of Manchester as the Queen visited the campus to bestow the Royal Charter on the new institution.

Inauguration of The University of Ma



A few minutes ahead of schedule, Her Majesty arrived outside the archway on Oxford Road at around 11.20am, where she was met by the Lord-Lieutenant who presented her to the Lord Mayor of Manchester, Councillor Tom O'Callaghan, and the Lady Mayoress Terrie Ross; the Chief Executive of Manchester City Council, Sir Howard Bernstein and the Secretary of State for Education and Skills, Charles Clarke.

The Queen was then introduced to the President and Vice-Chancellor of the University, Professor Alan Gilbert, who escorted her into the Whitworth Building where she was presented to the University's Co-Chancellors Anna Ford and Sir Terry Leahy; Pro-Chancellors Admiral Sir John Kerr and Norman Askew and the Registrar and Secretary Dugald Mackie.

The Queen then took her place in the ceremonial procession which made its way into the Whitworth Hall to the strains of Purcell and Handel, played by the University's organist James Garratt.

Co-Chancellor Anna Ford opened the inauguration ceremony by welcoming the Queen. She talked of the Royal Family's strong association with the University over the years, touching on the fact that

it was Queen Victoria who granted the University's first Charter in 1880.

She also spoke of the purpose of the ceremony and said: "Today we honour those people who pioneered this bold and imaginative merger and helped make it a success. And we look to our future. A future that will involve a major investment in our staff, and in facilities to open up new areas of opportunity in the fields of research and learning."

Professor Alan Gilbert then gave a speech in which he said the University was 'doubly blessed' in being a genuinely new, innovative and creative institution, but was able to draw on a rich legacy from its predecessor institutions.

Said Professor Gilbert: "This gives the new University a once in an institutional lifetime opportunity to change the landscape of English higher education by creating in Manchester one of the finest universities in the world."

He also explained that from this day forward, 22 October would be celebrated as the Foundation Day of The University of Manchester and invited the four founders of the University onto the platform.

The founders of the University are Professor John Garside, Vice-Chancellor of UMIST (2000-2004); Professor Sir Martin Harris, Vice-Chancellor of The Victoria University of Manchester (1992-2004); Professor Tom Hinchliffe, Pro-Chancellor and Chairman of Council, UMIST (2001-2004) and Dr Rodger Pannone, Chairman of Council, The Victoria University of Manchester (2000-2004).

Professor Alan Gilbert then read the Foundation Declaration which outlines the University's aims and purpose, and honours John Owens and Benjamin Heywood, the founders of The Victoria University of Manchester and the Manchester Mechanics Institute, as well as the 22 Nobel Laureates who have been associated with the University.

In response, Co-Chancellor Sir Terry Leahy addressed the congregation, paying tribute to the many people, institutions and organisations which played a powerful and positive role in the creation of The University of Manchester - including HEFCE, the North West Development Agency, the Office of Science and Technology, the Department for Education and Skills and Manchester City Council.

Manchester



Photos by Howard Barlow



His speech was followed by the Secretary of State for Education and Skills, Charles Clarke MP who said that it was a historic day not just for Manchester and the North West, but for the whole of the United Kingdom. He paid tribute to the 'energy, expertise, imagination and hard work' which everyone had put in to creating what he called 'this great new university'.

He added that the University has set itself an ambitious and difficult challenge in aiming to become one of the world's leading universities, but said: "It is a challenge which, because of the history

of The Victoria University of Manchester and UMIST, I believe it can assert with confidence. What Manchester does today, the world does tomorrow."

Her Majesty then made a short address in which she recalled her many visits to the University over the past 50 years. She said: "The creation of the new University represents a bold and imaginative response to the challenges facing higher education. In creating this new institution, you are building on a rich academic heritage and a fine tradition of excellence in both teaching and research.

By combining the talents of two highly rated institutions, I feel sure that you will be able to take advantage of a more powerful academic position, not only in the United Kingdom, but across the world."

Her Majesty then handed over the Royal Charter to Co-Chancellor Anna Ford who said: "We aim to strive to make Manchester one of the best and most fruitful universities in the world. If the energy, enthusiasm and sheer dogged hard work shown over the past two years in bringing these two institutions together are anything to go by, I think it will succeed."



After the formality of the ceremony, the Queen took the opportunity to meet a group of students from each of the University's four Faculties to talk to them about their studies.

She met Tim Holland and Kathryn Rothwell (pictured below) from the School of Medicine; postgraduates Alessandro Conticini and Karen Moore from the Institute for Development Policy and Management; Seema Chakravarthi and Catherine Jessop who are postgraduates in the Faculty of Life Sciences and Paul Carr and Megan Argo who are second year postgraduate students from the School of Physics and Astronomy and based at Jodrell Bank.

Life Sciences postgraduate Seema Chakravarthi said: "It was quite a nice experience actually – to see her in person. We were explaining to her the work that we do on protein folding in the cell and basically how diseases like Cystic Fibrosis and Alzheimer's come about, which she was very interested in."

Her Majesty then joined staff and guests for a drinks reception and lunch in a marquee which had been erected in the Old Quadrangle especially for the occasion.

After lunch, the Queen returned to the Whitworth Building, where she signed the University's Visitor's Book before being presented with a posy of yellow roses by 14-year-old Ileaka Peeks (pictured above) who is a Year 10 student at Whalley Range High School Business and Enterprise College.

Ileaka has attended a range of Targeted Access Scheme (TAS) activities organised at her school by the University. TAS aims to raise awareness of higher education amongst young people between the ages of 13 and 18 who have the potential to succeed at university.

Her Majesty then braved the elements to meet staff and students who had crowded into the Old Quadrangle. Sheltering under a see-through umbrella, the Queen shook hands with and chatted to several people.



One of those she spoke to was James Hern, a 22-year-old Civil Engineering undergraduate, who said: "She asked me what I was planning to do and when I said I was very interested in sewerage, she said: 'That's very useful.'"

Dr Shirley Chiu, Head of Administration in the School of Physics and Astronomy, also had the pleasure of speaking with the Queen. She had first met the Queen when she was a young girl living in Hong Kong and said: "I'm very happy and excited to see

her for a second time and have the chance to look at her from only a few feet away."

With a final wave to the crowds, Her Majesty returned to her car and was driven through the gates of the Old Quadrangle to be met by a large cheering crowd gathered on the steps of the Refectory. And so drew to an end a historic day in the life of The University of Manchester.

To view the Inauguration Ceremony visit the website below.



President's Foundation Day Presentation



How The University of Manchester will become one of the top institutions in the world was the subject of Professor Alan Gilbert's Foundation Day Address to staff.

The President and Vice-Chancellor told the hundreds gathered in the Whitworth Hall on 22 October, that the next few years would be crucial if Manchester was to achieve its ambition of joining the first-rank of universities.

He said the ambitious plans in the Manchester 2015 Agenda were of "national and international significance" as well as being crucial for the North West.

"There must surely be at least one great university outside the 'Golden Triangle' (of Oxford, Cambridge and London) if Britain is to redress the dangerous dependence of its economy on a single dominant region in the South-East," Professor Gilbert said

"A great University of Manchester will have to engage in new and imaginative ways with its wider society, internationally as well as regionally and nationally. It must accept the importance of national aspirations to widen access to higher learning – and act accordingly. As a major creator of knowledge and expertise, it will need to be in advance of current best

practice in managing intellectual property, and contributing to wealth creation. Internationally, it must join other privileged First-World institutions in addressing grave problems associated with global educational deprivation."

He said that The University of Manchester would be subjected to intense scrutiny in the months and years ahead and warned that a "business-as-usual" approach should not be contemplated.

"Our very existence represents a commitment to the kind of 'step change' improvement that will lead to sustained, world-class excellence in scholarship, research, teaching and learning. We simply cannot afford to settle for modest aspirations or mediocre achievements."

He said the transition from a "very good" university to a "great" one would not be easy but can and has been done. It would require the University to fulfil five preconditions, the first of which was "effective planning".

Such plans would not constrain the freedom of academics but rather "focus

creativity and facilitate academic excellence" while allowing progress to be measured against the specific objectives of the 2015 Agenda.

The second prerequisite for success was to have the right people. The University of Manchester, he said, was home to a "number of outstanding people" but some appointments would have to be made at the level of supreme virtuosity for which Nobel Prizes are won.

"Perhaps the most important single benefit that will accrue from making a series of iconic appointments to Manchester is the positive impact such illustrious colleagues will have on the likelihood of outstanding younger scholars securing similar recognition without leaving Manchester."

The third imperative was "brutal realism", where transparency and honesty would instil confidence in staff and enable them to attempt what may have seemed impossible. "Accurate, honest 'gap analysis' must be undertaken in relation to all our scholarly activities; we need to know (where we) fall short of our comparator institutions," he said.

'Executing' the 2015 Agenda – the fourth prerequisite – would demand an immense, sustained and focused effort over a long period but this would be helped by the creation of a powerful collegial community. This final imperative would help achieve the self-discipline required to lift institutional performance. "The good news is that we are already close to having such a community in the new University. The collegial commitment expressed in support for Project Unity over the past two years has been remarkable."

Professor Gilbert ended his Address by paying tribute to colleagues across both predecessor institutions: "Let me applaud the courage of the whole University community in accepting so daunting a challenge, and acknowledge the wisdom and tenacity that have brought our great enterprise to the successful beginning that we have celebrated today."

The full presentation can be viewed on the website below.

Campus Developments

Diana Hampson,
Director of
Estates



Since the master plan for the campus was unveiled earlier this year for consultation among staff, students and other interested groups, significant progress has now been made on the first phase of the redevelopment of the campus.

As reported in UniLife last February, the cost of addressing the needs of the new University was estimated at £248m over a ten-year period. Funding for this from Project Unity and a further £50m has been secured or is planned for other non-Unity developments and, together with other schemes already under construction, the campus has a capital programme of more than £330m.

Director of Estates, Diana Hampson said: "This is a huge ten-year project which will deliver the facilities and environment vital to helping the

University achieve its strategic goal of becoming one of the world's leading universities by 2015.

"Following extensive consultation and careful consideration of what the University's needs will be, we are now underway with key aspects of the masterplan and design teams are working hard to translate the first phase into reality. New and improved teaching, research and leisure facilities, support services and landscaping all form part of the plan which will benefit students, staff and visitors to the campus.



"Obviously this a time of dramatic change for the campus community but we aim to keep all groups informed of progress and key decisions as we go along."

Areas of significant progress over the past few months are highlighted below:

Infrastructure

Environmental/Landscape Improvements to Open Spaces

Further detailed design work has been carried out on the 'Public Realm' works which, in effect, will act as the glue which holds the campus together.

The main area for landscape improvements will be around and between the major projects. The specifications of these will vary around the campus and will reflect the required quality of the new University.

Whilst there will be an impact on some of the existing green spaces, it is intended that there will be a major improvement in the quality of the 'Public Realm' environment and no reduction in the overall area of the open spaces on campus.

Shuttle Bus

A fleet of three minibuses is now in operation linking the Sackville Street and Oxford road end of the main campus.

Mancunian Way

The pedestrian route running under the Mancunian Way to Upper Brook Street will have an improvement in terms of lighting, CCTV, pedestrian paving, and to general landscaping. This work will be substantially complete before Christmas 2004.

Improved Infrastructure

Existing services including electricity, water, gas, sewers are in the process of being diverted in preparation for the commencement on site of the major building projects

Multi Storey Car Park

The re-provision of the car parking spaces displaced by the proposed building projects will take place on the existing North West surface car park adjacent to Cambridge Street/Booth Street West.

Student Centre/Lecture and Seminar Building (SCAN Building)

The project will commence on site with the demolition of the Maths tower on Oxford Road. The demolition will be a lengthy process of between nine and 12 months as the tower will be demolished in a safe manner which will entail removing all loose items in the building, isolating the services, slowly 'nibbling' away at the fabric of the building and carefully removing the debris from the campus in preparation for the construction of the

new building which will be completed towards the end of 2007.

AMPPS Building (Astronomy, Mathematic, Physics and Photon Science)

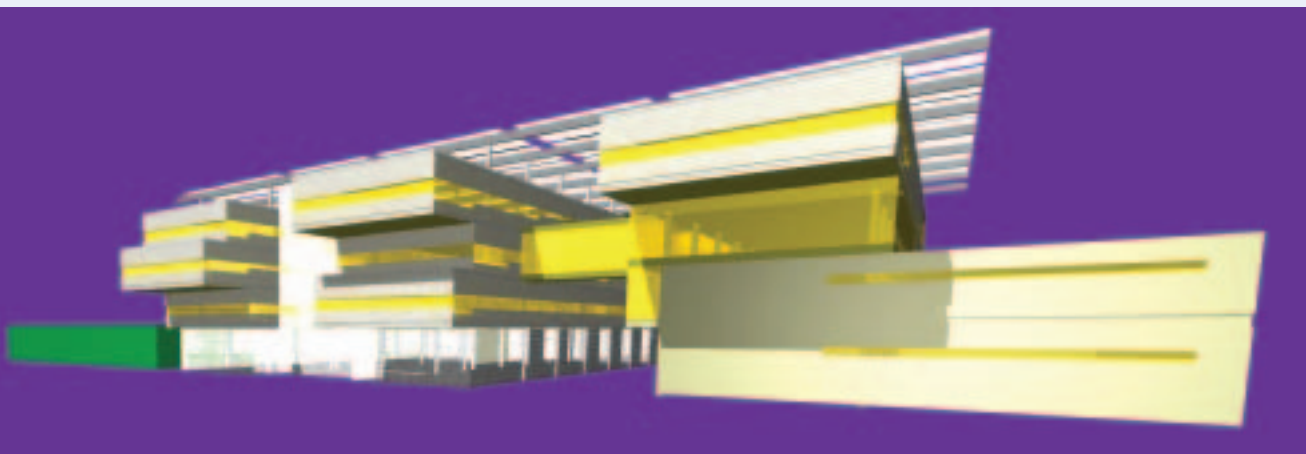
The design for the new building which will be located along Upper Brook Street and to the rear of the Schuster Building, is progressing well. A start on site is expected to be made in the summer of 2005 with completion targeted for August 2007.

Chemistry

Good progress has been made on the design of the proposed extension to the existing Chemistry building. This will be constructed on the Upper Brook Street elevation of the existing building and should be completed by summer 2006. The scheme will also include significant refurbishment to the existing Chemistry building on Brunswick Street

School of Social Sciences/School of Environment and Development

A new building to co-locate the two Schools will be located between the existing Architecture and Planning Building and Waterloo Terrace. The design is progressing well with completion of the building expected in Spring 2007. Although there will be some immediate loss of green space, the planned 'Public Realm' works will re-provide high quality landscaped areas in the vicinity of the new building.



What's On



The Whitworth Art Gallery

DISPLAYS/COLLECTIONS

William Morris "Ministering to the Swinish Luxury of the Rich" to 23 December 2004
An exhibition by David Mabb. Mabb recycles familiar images from the Gallery's holdings of William Morris material to produce a new installation.

Ship Ahoy! to February 2005
This exhibition of watercolours, prints, wallpapers and textiles includes depictions of galleons, fishing smacks, trading vessels, warships and freshwater boats. The exhibition also features a Ship Ahoy! Reading area providing children's books with stories about ships, pirates and the deep blue sea.

Walter Sickert 'Drawing is the thing'
October to 5 December 2004
This extensive loan exhibition of Sickert's drawings offers an unrivalled insight into his techniques, themes and, most importantly, his reasons for the drawing.

TOURS AND EVENTS

Every Saturday at 2pm there is either an Exhibition Tour or an Eyeopener Tour.

Walter Sickert Curator's Tour -
Sat 30 Oct, 2pm, FREE

CONCERTS

Dibley String Quartet: excerpts from quartets by Dvorak and Shostakovich,
Sun 31 Oct, 3pm, FREE

Whitworth Art Gallery, Oxford Road, 0161 275 7450 www.whitworth@man.ac.uk
Opening hours Mon to Sat 10am - 5pm, Sun 2pm - 5 pm FREE Admission
Gallery Café 0161 275 7497 The café sells a selection of drinks and light meals.
Gallery Shop 0161 275 7498 The bookshop stocks a range of art and design books, cards and gifts.
Collection Exhibitions Archive Now Online. The Whitworth's online 'Collections Catalogue' now allows you to browse and search selected exhibitions held at the Gallery over the past 10 years. Follow the link from www.whitworth.man.ac.uk

Gig Guide Manchester Academy 1, 2 & 3

Tues 26 Oct
Brothers with Different Mothers
Soulwax
Weds 27 Oct
Dizzee Rascal
Neal Casal
Thurs 28 Oct
Kane
Mad Caddies
Fri 29 Oct
Hoobastank
Living Colour

Sat 30 Oct
Ian McNabb
Hope of the States
Sun 31 Oct
Uriah Heep
Po Girl
Mon 1 Nov
The Black Keys
Tues 2 Nov
Eighties Matchbox B-Line Disaster
Wed 3 Nov
Ani Di Franco

Thurs 4 Nov
The Polyphonic Spree
Nick Harper
Fri 5 Nov
Jay Shawn
Sat 6 Nov
Complete Stone Roses
Hanson
Sun 7 Nov
Wednesday 13
Weds 10 Nov
Kevin 'Bloody' Wilson

John Butler Trio
Fri 12 Nov
Proud Mary
Sat 13 Nov
Amy Winehouse
The Other Smiths
Sun 14 Nov
Hundred Reasons
Mon 15 Nov
Beverly Knight
Radio 4

Students' Union Oxford Road, Manchester, M13 9PL
Tickets from: Piccadilly Box Office, easy Internet Cafe, (c/c) 0871 2200260
Online @ www.manchesteracademy.net Royal Court (Liverpool) 0151 709 4321 (c/c)
Students' Union 0161 275 2930

Contact Theatre

Contemporary Music Network Tour produced by Amino
STREETMUSIC ARABE

This ground-breaking event celebrates a particular sharing of traditions, new forms, and contemporary influences between east and west. From the abrasive beauty of Nass El Ghiwane's poetic, militant lyrics, vibrant rhythms and melodic trance, via the sublime cultural soundclash of DJ/Rupture's three-turntable mix, and Nettle's reinvention of abstract electronic music through traditional Arabic song structures, to Clotaire K's transposing of rap's urban agenda from the streets of New York to the streets of Beirut, Streetmusic is the downloaded soundtrack of everyday lived experience raised to exciting new heights.
Sat 23 Oct 2004, £9/£6

Unlimited Theatre
ZERO DEGREES AND DRIFTING
Set on the eroding cliff edge of a remote English coastal town Zero Degrees and Drifting is about love, refuge and the benefits of having a toy monkey as your only friend. It's the story of a young couple in a lighthouse measuring weather and conserving fish, a pirate DJ on a boat broadcasting missing person adverts 24/7 and a broken, bruised, beautiful stranger washed up on a beach.
Tue 26 Oct 2004 - Wed 27 Oct 2004, £9/£6

Apples & Snakes in association with Contact and Battersea Arts Centre
SOMETHING DARK
Lemn Sissay is one of the most exciting, electrifying and original voices in Britain. A unique performer, he fuses sharp humour with devastating outsider insight. There is great light in Something Dark. It is a journey of the soul and a triumph of the heart. Lemn Sissay spent the first seventeen years of his life in care and his entire adult life searching for his family. The search revealed the secrets and lies of an incredible past. Like all incredible stories, it's one that he must tell and one that you must hear.
Fri 29 Oct 2004 - Sat 30 Oct 2004, £9/£6

Contact Theatre, Oxford Road, Manchester
Tickets/Info: 0161 274 0600
For information on other events please visit our website www.contact-theatre.org
A limited number of tickets are available from just £4 on the day from the Ticket Office between 11am - 4pm daily.

Jodrell Bank

The facilities at Jodrell Bank are going through a period of redevelopment. The Visitors Centre currently has a café, an exhibition space and a 3D theatre open, and visitors can still explore the various trails and the natural habitats of the Arboretum's 35 acres with its 2000 species of trees and shrubs and National Collections. In January 2004 Jodrell Bank completed a 180 degree observational pathway close to the base of the world famous Lovell radio telescope.

Jodrell Bank Science Centre & Arboretum
Macclesfield, Cheshire
01477 571339 www.jb.man.ac.uk

John Rylands Library

The John Rylands Library on Deansgate which is our Special Collections building, will be closed for a period of two years until mid 2006, for essential refurbishment and the construction of a new visitor and interpretative centre. However, access to all the Special Collections is still available through the main library on the Oxford Road end of the campus. A Special Collections Reading Room is open on Purple Floor 4, Monday to Friday 10am to 5.15pm and Saturdays 10am to 1pm. Readers may find it helpful to contact us in advance on 0161 275 3764. For further information visit our website shown below.

John Rylands University Library,
Oxford Road, Manchester, M13 9PP
0161 275 3751
www.manchester.ac.uk/library

International Society

THEATRE AND MUSIC

For details about the availability of tickets for various theatre and music performances, please visit our website.

TRIPS

Sat 30 Oct
Day visit to Alton Towers Theme Park

Sat 30 Oct
Day visit to Chester

6-7 Nov
Overnight trip to Bath (with visit to Stonehenge)

Sat 6 Nov
Day visit to Keswick, North Lake District

Sun 7 Nov
Day visit to Tatton Park's Xmas Shopping Fair

Sat 13 Nov

Day visit to York

Sun 14 Nov
Day visit to Kendal and Windermere, South Lake District

International Society,
(next to Krobar) 327 Oxford Road
0161 275 4959
www.internationalsociety.org.uk
Monday - Friday 9:30am - 5pm

Manchester Museum

Fridays (during term-time), 11am -12 pm
Magic Carpet
Storytelling and story making for the under fives.

Thursday 28 October
1.30 - 3.30pm (Family Drop-in Event)
Picturing Plants
Find out more about the work done by the Botany Department and create your own bookmark or card.

Thursday 28 October,
12.30 - 1.30pm FREE
Going Wild in Siberia
Find out about the wildlife of Siberia in this talk for families, showing the work of the Museum's curators of zoology and entomology (insects).

7.00pm - 9.00am
Museum Sleep-over: In My Backyard
Find out all about the wildlife on your doorstep and create your very own mini-garden to take away. For more information and to book a place call 0161 275 2630.

Friday 29 October, 12.30 - 1.30pm FREE
Botany Uncovered
Join us for a special behind-the-scenes tour of the Botany Department. Booking essential, as numbers are limited.

Fri 29 October, 1.30-3.30pm FREE
Wildlife in Manchester
Get up close and personal with the Museum's collection of British birds and mammals in this handling session for all the family.

Saturday 30 October, 1.30 - 3.30pm
Natural Habitats
Find out what sort of homes our local wildlife live in and create your own mini-habitat to take away with you.

Saturday 6 November, 1.30-2.30pm FREE
Hidden Treasures
View our new exhibition, 'Buried Treasure' and discover some of the treasures from our Ancient Egyptian collection.

Sunday 7 November
12pm -3pm (Family drop-in event)
Egyptian Treasures
Recreate some of the treasures found in the tombs of the pharaohs in this art and craft session.

Saturday 13 November, 1.30-2.30pm FREE
Hidden Treasure
View our exhibition, 'Buried Treasure' and find out more about some of the treasures from our mineralogy and coin collections.

Manchester Museum Oxford Road,
0161 275 2630, www.museum.man.ac.uk
Opening hours, Monday - Saturday 10am - 5pm,
Sun 11am - 4pm. Free admission, booking is essential for all programmes

Chaplaincies

St Peter's House Chaplaincy
SUNDAY WORSHIP
10am Group Work
11.15am Morning Worship
6.30pm Evening Worship (Term-time only)
FOYER 10am-4pm. An area where students and staff can relax and meet friends. A tea/coffee machine is available.
Precinct Centre 0161 275 2894
sph.reception@man.ac.uk

Music at Manchester

SPECIAL CONCERTS & EVENTS

Friday 29 Oct, 7.30pm
The Cosmo Rodewald Concert Hall
The Endellion String Quartet
Haydn Quartet in F Op.77 No.2
Robin Holloway Quartet Op.97
Webern Five Moments Op.5
Mendelssohn Quartet in F minor Op.80

Friday 5 Nov, 5.30pm
The Cosmo Rodewald Concert Hall
Beat The Rush Hour - The University of Manchester New Music Ensemble
Nina Whiteman Twango Fandango, Entrails
Rebecca Anderson From Mrs Tiresias, Songs for Soprano and Tenor
Lowri Jones Bound Free, Songs for Baritone and Chamber Ensemble

Fri 12 Nov, 7.30pm
The Cosmo Rodewald Concert Hall
The Lindsays
Mozart Quartet in D minor K.421
Brahms Piano Quintet in F minor Op.34
Schubert Piano Quintet in A D.667 'The Trout'

CHORAL AND ORCHESTRAL CONCERTS

Sat 13 Nov, 7.30pm
Christ Church, West Didsbury
University of Manchester Music Society AD SOLEM
Marcus Farnsworth Conductor
John Tavener Requiem for Father Malachy Lynch
Britten Rejoice the Lamb
Fauré Requiem

Sun 14 Nov, 11am
Church of the Holy Name, Oxford Road
University of Manchester Music Society AD SOLEM
Marcus Farnsworth Conductor
Fauré Requiem

THE WALTER CARROLL LUNCHTIME CONCERTS AND RECITALS
Cosmo Rodewald Concert Hall

Thurs 28 Oct, 1.10pm
Celebratory Concert to mark the 90th Birthday of Wilfred Mellers
Lesley-Jane Rogers Soprano
John Turner Recorder
Peter Lawson Piano
Programme to include pieces by Britten, Rubbra, Copland, Mellers, Joubert, Ned Rorem and Philip Grange.

Thurs 4 Nov, 1.10am
Duo Trobairitz
Faye Newton Soprano
Hazel Brooks Vielle
A programme of songs of unrequited love from 12th and 13th centuries in the time of Eleanor of Aquitaine

Music and Drama, Martin Harris Bldg
0161 275 8950/1
<http://www.arts.manchester.ac.uk/subjectareas/music/concertsevents/>

Avila House RC Chaplaincy (next to the Holy Name Church)
Mass Times
Mon - Fri 1.05 pm (term-time only)
Oxford Road 0161 275 6999/273 1456

Chaplains also available Monday - Friday
Floor B, Room B25, Renold Building
0161 200 2522

Mosque: Sackville Street Building
Prayer Room: Renold Building B26



Seminars

Tuesday 2 November

CHSTM: "Science and the citizen: dialogue and science communication in World War II". Tim Boon (Science Museum, London). 4pm, Room 3.29, 3rd Floor, Maths Tower.

CCSR: "Evaluating the potential for an administrative records census". Dean Judson (US Bureau of the Census). 4pm, 2nd Floor Crawford House (entrance via Booth St East). All welcome.

TRDN: Maximising the use of student representation". 12pm-2pm (lunch provided), Committee Room A, Whitworth Corridor (Booking essential: ring 275 2316 or email veronique.rizzuto@manchester.ac.uk)

Wednesday 3 November

Manchester Centre for Nonlinear Dynamics: "Generic model simulations of microstructured materials". Dr Doug Cleaver (Sheffield Hallam). 4pm, Blackett Lecture Theatre, Schuster Laboratory.

School of Materials: "Exciton dynamics in supramolecular semiconductor nanostructures". Dr Carlos Silva (Cambridge). 2.15pm, Room D13, Manchester Materials Science Centre.

Transport Seminar: "The town planner's viewpoint". Martin Arthur. 5.30pm, Cordingley Lecture Theatre, Humanities Tuer/Bridgeford Street (formerly Architecture and Planning Bldg).

School of Materials: "Exciton dynamics in supramolecular semiconductor nanostructures". Dr Carlos Silva (Cambridge). 2.15pm, Room D13, Materials Science Centre. All welcome.

Thursday 4 November

Pharmacy and Pharmaceutical Sciences: "Electron microscopy – dinosaur technology or a technique with significant uses in the modern scientific and medical worlds?" Dr Alan Curry (MRI). 4pm, LTA, Coupland 3 Bldg.

Imaging Science and Biomedical Engineering: "Diabetic foot radiology". Dr R W Whitehouse (Manchester). 5.15pm, LT3, Stopford Bldg.

Centre for Jewish Studies: "The history of Christian-Jewish relations". Sean Gannon. 7.30pm, Hale United Reform Church, Cecil Road, Hale.

Tuesday 9 November

CHSTM: "The story of Dr Malaria": some contradictions in international health in the 1950's". Sunil Amrith (Cambridge). 4pm, Room 3.29, 3rd Floor Maths Tower.

School of Chemistry: "Bridging transition metal ions with designer heterocyclic ligands". Prof Sally Brooker (Univ of Otago, New Zealand). 4pm, Room G.51, Chemistry Bldg.

School of Nursing, Midwifery and Social Work: "Exploring the ongoing needs of patients with a cancer diagnosis". Jane Griffiths. 12.30pm, COPE Room, Coupland III Bldg.

NPCRDC: "The expert patient: the policy and practice of self-management training for people with chronic health conditions". Lucy Blenkhorn. 2pm, Seminar Room 2, 5th Floor, Williamson Bldg.

CCSR: "Modelling the gender pay gap in Britain". Wendy Olsen. 4pm, 2nd Floor Crawford House (entrance from Booth St East). All welcome.

TRDN: "Phrasebank: a University-wide online writing resource". John Morley (Language Centre). 12pm-2pm (lunch provided), Committee Room A, Whitworth Corridor. (Booking essential: ring 275 2316 or email veronique.rizzuto@manchester.ac.uk)

Wednesday 10 November

School of Chemistry: "Dynamic combinatorial chemistry: new opportunities for molecular recognition and catalysis". Prof Jeremy Sanders (Cambridge). 4pm, Room G.53, Chemistry Bldg.

Sociology Seminar: "Biographies of technicity: personal computing and social power". Graeme Kirkpatrick. 4.30pm, Room 4.9, Roscoe Bldg. **Imaging Science and Biomedical Engineering - Ian Young Lecture:** "Imaging Salford's bowels". Dr H C Burnett (Salford). 5.15pm, Wigan Postgraduate Medical Institute.

Manchester Medical Society ODONTOLOGY AGM: "Tooth development and tissue engineering". Speakers: Prof P Sharpe (Guy's), Prof C Dean (UCL), Prof A J Smith (Birmingham). 2pm, MANDEC.

Manchester Medical Society PATHOLOGY: "Inherited metabolic disease: a review and new approaches to treatment". Dr J E Wraith (Manchester). 5.30pm, LT2, Stopford Bldg.

Manchester Medical Society MEDICINE: "Loves and hates of the medical take". 2pm, Undergraduate Lecture Theatre, Hope Hospital.

Thursday 11 November

School of Pharmacy and Pharmaceutical Sciences: "Modelling prefrontal cortex deficits in schizophrenia: from behaviour to gene expression". Prof Judith Pratt (Strathclyde). 4pm, LTA, Coupland III Bldg.

Manchester Medical Society ANAESTHESIA Morning Symposium: "Regional anaesthesia". Speakers: Dr H Hack (Manchester), Prof J A W Wildsmith (Dundee), Dr H B J Fischer (Worcester), Dr A Vohra (Manchester) and Dr P Alston (Edinburgh). 8.45am, Education Centre, Royal Bolton Hospital

Noticeboard



Want to receive an extra £100?

We are looking for men and women to take part in research studies at the Neuroscience & Psychiatry Unit. Everyone is eligible to apply. We'll send you a simple health questionnaire to complete, which will help us allocate you to the most appropriate project. A researcher will then get in touch with you to tell you the details of their study, giving you the opportunity to ask questions about it before you commit to taking part.

If you are interested, please contact us at: 275 7432 or 275 7670
npuvols@fs1.scg.man.ac.uk

Student Support and Guidance

Do you have special interest in student support and guidance? This continuing professional development programme is led by a team of staff from The University of Manchester with expertise in the area of student support.

Seminars will start on 5 November 2004. For further details visit www.intranet.manchester.ac.uk/rsd/ci/profess/ssg/index.htm.

To book a place, e-mail the Training and Development Unit: courses.tdu@manchester.ac.uk

Manchester University School of Law Legal Advice Centre

The Legal Advice Centre is currently taking appointments. The Centre operates during term-time and provides free, legal advice in strictest confidence to both students, staff and members of the public. Clients are advised by law students supervised by local lawyers and professionally qualified teaching staff

Precinct Centre, Oxford Road. Opening times: Mon - Fri 10am - 2pm

Tel: 0161 275 7977. Fax: 0161 275 7976. Email: free.legal@manchester.ac.uk

Network Opportunity

The Worldwide Universities Network (WUN) Global Exchange programme is now taking applications for its next round of staff and student exchanges in the US & EU. The programme is open to graduate students, academic and academic-related staff in The University of Manchester and offers funded short term research at several overseas universities.

Through the programme you can establish links with researchers in your field; strengthen your career profile; discover new research environments; benefit from world-class facilities & resources; share ideas and techniques; expand and complement your area of research; work with senior research faculty.

Applications are especially welcome in these key areas: Informatics, Bio-medical Informatics, Stem Cells and Tissue Engineering, Nano-Technology, Advanced Materials, Mobile Devices and Wireless Communications, Green Chemistry, Earth Systems, Globalisation and Geography of the new economy, Public Policy and Management Humanities, Nursing, Humanities & Medieval Studies.

The closing date for applications is 30 November 2004.

For more information and an application forms, please consult the website.

Completed forms should go to: Dee Gilmore-Stewart in the Research Office, Tel. 2758261, E-mail Dee.Gilmore-Stewart@manchester.ac.uk

[Http://www.wun.ac.uk](http://www.wun.ac.uk)

MANCHESTER
1824

The University of Manchester

Bring the world to Manchester

We've got the **right** location.

When you are organising an academic conference, talk to us about the superb **conference facilities** available at the University of Manchester. Your contacts, plus our experience and facilities, make a powerful formula for success.

Our **ConferCare** service can organise every detail, from delegate registration to website updates and social activities, leaving you free to concentrate on the programme. So let's work together.

For more information, call Sarah Evans on:
0161 306 4108
or visit www.meeting.co.uk

The University of Manchester. A world-class destination

Classifieds

HOUSE FOR SALE

Reddish. Modern 1 bedrm ground flr flat, with private driveway & lrg back gdn. GCH, dble glazed, alarm. Tastefully dec throughout comprising entrance hall leading to lrg din area. Attractive pine surround living. Flame gas fire, gd size kit, fitted units, gas hob, electric oven. Fitted wardrobes in bedrm. 10min drive to Univ. Viewing essential. £90,000. 0161-257 0856, 07762 774 972 or email: tanya.barlow@manchester.ac.uk

ACCOMMODATION TO LET

Withington. Short term solution. 1 rm + box rm to let for 2 mnths from Sept. Rent neg. 0161-434 6139.

Chorlton. Lrg rm avail in quiet family hse. Close to Metro & bus routes, ideal for Univ. £15pn inc breakfast or neg rate for more than 3 nights. 0161-864 1246 or email: johnvalmcclean@onetel.com

Bramhall/Cheadle Hulme. F/F 2 bed Bungalow, GCH, newly dec throughout. New Combi boiler, microwave, auto washer etc. Very comfortable & cosy. Small pleasant gdn f & r. Parking for 2/3 cars. Extremely sought after loc. Close to bus/train to Stockport/M/cr. Prof staff only. 0161-485 3112.

Didsbury Village. Comfort 2 bed Victorian cottage in quiet cul-de-sac for rent for 6 mnths, initially poss longer. Avail immed. Suit visiting academic/couple. F/F & mod with gch, dble glazing & a modern alarm. Close to shops & transport. No pets & non-smokers only. £775pm + bills & dep. (27)54003 or 07717 171 779.

Didsbury Village Centre. 2 bed hse avail from Nov 04. F/F, nicely dec & exc loc for the village & main bus routes to the Univ & Manchester City centre. Suit couple 30+ non-smokers. £700pcm. 0161-445 5725.

Chorlton. 3 bedrm hse will be avail from Nov 04. 3 miles to Univ, 2 bathrm, fully central heating, fitted kit. £49ppw. 07887 775 556 after 3.30pm.

Victoria Park. Spac f/f luxury 2 bed apart. Walking distance to Univ. Open plan liv rm, laminate flrs throughout. French windows onto grounds, parking, w/dryer, d/washer ch. £650pcm. 0161-256 1173.

Didsbury. 1 bed flat inc allocated parking. Close to village & all amenities & Wilmslow Rd bus route. £495pcm. 07749 674 261.

HOLIDAY ACCOMMODATION

Florida avail from Oct 2004. Air cond 3 bedrm, 2 bathrm fully equip brand new villa close to Disney, Sea world, Universal Studios. Clubhse, swimming pool, kiddie pool, tennis court & playground area. Short drive from Orlando airport, close to shops, restaurants & motorway system. £350pw. 0161-494 2879 or 07760 453 738. Flights, car hire, theme park tickets can also be arranged.

Puerto del Carmen, Lanzarote. Spac, stylish apart. Sleeps 5 in comfort. Both dble bedrms en-suite. Sun terrace overlooks beach & sea. From £245pw. Special prices for families. www.casapalmeras.co.uk

Languedoc-Roussillon. French village hse to let in spectacular loc. Walks, mountains, rivers, wine in abundance. 30 mins from coast, sleeps 4-6. 07985 168 099 or email from www.geocities.com/roquebrun_let

Tuscany holiday cottage to let. Superb setting near mountains. Lrg gdn, air conditioning. Florence, Siena, Arezzo easily accessible. Ideal for walking, sight-seeing, museums, restaurants, wine tasting, swimming & much more. 0208 699 8883. Details and photos on website: <http://freespace.virgin.net/gp.ck/> Email: gp.ck@virgin.net

Luxury villa in Orlando, Florida. 4 beds, 3 baths, with 24ft pool & spa, overlooking lake. Close to Disney, shops, restaurants & local attractions. Very spac, beautiful furn, 4 poster bed, fully equip, games rm, accommodates up to 8 people + cot. From £400pw. 0161-439 0408 or email: kate@mickeysorlandovilla.co.uk

Andalucia-Gaucin. Beautiful white village, uniquely designed villa, built as 3 apart & 2 cottages with central courtyard & pool. Sleeps 2-13. Breathtaking views to Gib & N Africa. 07801 341 856 or www.thespanishvilla.com

For sale 2 wks' timeshare at Gold Crown resort 'Sunset Harbour' Tenerife. Wks 16 & 17 (end of April). 1 bedrm spac apart with lrg balcony, sleeps 4. Sold inperpetuity £4000 ono. (27)54035.

CARS/MOTORCYCLE FOR SALE

Citroen Saxo 1.1 Eastcoast. Blue T Reg. 50k miles. 6 mnths MOT. Sunroof, cd player, fsh, 1 lady owner from new, lovely cond. £1,650 ono. (27)52863 or 07879 001 073.

VW Polo 1995 N Reg. 130OCL, only 34k miles. Taxed & MOT, FSH, electric windows, central locking, ex cond. £2,250. 0161-442 9763 after 6pm or 07791 169 119.

MISCELLANEOUS SALES

Regency style din suite, dark wood. Extensible. 4 chairs & 2 carvers. Green stripes, with matching corner unit. Both in very gd condition. Will sell separate. £120. 0161-337 8729 or 07817 495 283.

Underwater/amphibious camera (35mm rated). Motor marine 35mmMX10 with YS40 strobe. 20mm wide-angle & close-up macro lenses. Fish-frame quick sight, spare O rings, lube, films, leash. £75. (27)55488 or email: gedwards@manchester.ac.uk

Grape coloured i-MAC (old style). 10GB hard disc, 400MHz PowerPCG3, 128MBRAM. Orig keyboard & mouse & OSX version 10.2.8. Runs like a dream. £150 ono. Heaton footbath (Scholl Pedispa plus), unwanted gift, used twice only £20 ono. Email: mqbsszsa@fs1.scg.man.ac.uk

Sony Ericsson P800. Superb PDA/tri-ban mobile, boxed as new. Unlocked to all networks. Synchronisation with USB, travel charger, stereo portable handsfree. Memory stick adapter, 2 software CDs, extra stylus etc. £125. Email: msdssh2@manchester.ac.uk

Parker Knoll 3-seater settee & 2 reclining chairs in raspberry Dalton. Reclining mechanism for 1 chair requires some repair. £200 ono. Buyer collects. (27)58649 or 01457 832 072 or email: diana.knight@manchester.ac.uk

WANTED

Car sharing. Travelling everyday between Liverpool & Manchester Uni. Needs someone to share the driving & the petrol. (27)50728, 07917 068 408 or email: erika.setzu@manchester.ac.uk

SERVICES

Ian Hancock, BDS, Dental Surgeon, 180 Oxford Road (nr Manchester Museum). Courtesy, quality, safety. Same day attention for genuine emergencies. 0161-273 8484.

Qualified/Exp. Joiner. All types of carpentry, woodwork, joinery. Tiling & plastering. Kitchen, bedroom & office fitting. New windows, doors, ceilings. Hardwood/laminate flooring. Skirting & dado rails, stairs & staircases. Plumbing & electrics. Bricklaying & masonry. Problems discussed. No call-out charge. Free estimates. 0161-865 9647 (answering service) or 07743 324 169

Worried about your English? Language and presentation help with dissertations, theses, essays, projects etc. Humanities subjects. Reasonable rates. 0161-225 4540.

Typesetting, document formatting & other documentation services provided for work on theses, reports, specifications, CV's etc. No job too large or too small. Professional services, reasonable rates. 0161-231 4648.

Specialist advisers to academics: Colin Coates & Partners offer tax & accounting services inc Professorial salary review & retirement covering the Universities Superannuation Scheme. 01934 844 133, email: info@ccptax.com or website: www.ccptax.com

House Improvements. From decoration to carpentry finishes. Wood floors refinished, plastering, doors, architraving, skirtings, shelving, storage/wardrobe units. Design & fix. Experienced tradesman. 0161-223 0125 ansaphone & fax.

Painter/Decorator. Good quality painting & decorating, inside/outside work undertaken, tidy workman. 07840 266 473.

Polyester Graphics Ltd. Digital full colour + b/w copying, lrg format poster printing, personalised printer t-shirts, mouse mats, polo shirts & sweat shirts. We also stock postage stamps & a selection of stationery. Small company offering a personal, quick & friendly service. Free & easy parking. 0161-443 1653 or email: polyestergraphics@becllick.com

Counselling/Psychotherapy with Chartered Psychologist, UKCP accredited NLP Psychotherapist and qualified Life Coach with 20 years' consultancy experience. Psychometric Assessment available. 0161-865 3193 or email: fokkina@onetel.com

Fully qualified electrician, 25 years' experience in all aspects of electrical installation & maintenance. Security systems for domestic & commercial premises. Free estimates. 0161-747 9443 or 07952 050 825.

Website Creation. From design to creating the website to getting the site online, all services associated with websites avail. 6 years' experience in the web industry. 0161-226 1935 or email: caroline.doidge@bbengland.com

The University of Manchester
Manchester Conference Centre

MANCHESTER

Special Academic Hotel Rate
£49.95 room only

Days Hotel Manchester, as an integral part of Manchester Conference Centre offers this special academic rate subject to availability.

All rooms are en-suite, and have TV, direct dial phone and internet access.

University departmental codes are accepted

For reservations, please ring
0161 955 8062 (or 68062 Internal)
Quoting "Academic Specials"

For further details, contact
Manchester Conference Centre
Sackville Street, Manchester M1 3BB
Email: daysinn@manchester.ac.uk
www.meeting.co.uk/dayshotel

Days Hotel **AA**

Terms and conditions: This quoted rate applies only to bookings of six or more, that four per night and is subject to change without notice.



TYPING SERVICES

Stephanie Jackson	275 6494	Pat Dooley	778 4055
Ms V Jeff	275 4603	Dawn Calmanson	428 2639
Angela	275 6166	Dot Clare	226 9521
Lisa Samberg	275 6315	Jayne Smith-Saville	275 2206
Jo Bolton	905 1959	Lynn Ward	275 6321
Margaret Martin	275 4589	Margarita Cook	275 5041
Andrea	434 8823	Lori Simpson	275 6630
Lisa McClair	275 5993		

 **Luther King House**

"Cosy nights, attractive prices and friendly staff"
Set in 2 acres of private grounds just a little way from the Universities, this secluded and unique location offers superb value for money, relaxing accommodation. En-suite bedrooms from only £21.00 p.p. (twin) or £34 (single).
Delicious evening meals in our dining room. Residents' bar.

Class 1 disabled access and ETC ***
see www.lkh.co.uk or tel: 0161 224 6404

Burbidge Joinery & Construction

Quality UPVC Windows & Doors

All Windows & Conservatories are individually made to each customer's specified requirements. A family business with over 24 years' experience. Laminate and solid timber floors supplied & fitted.

For free advice or information contact: Paul Burbidge (City & Guilds qualified Joiner) 0161-494 5228



Serving The University of Manchester for 30 years
0161 274 3060

Flights worldwide, UK and overseas rail, hotel reservations, car hire, package holidays, weekend breaks, and more...

University Precinct, Oxford Rd, Manchester M13 9RN
Tel: 0161 274 3060 email: btsales@deltatravel.co.uk
Fax: 0161 274 3555 Web: www.deltatravel.co.uk

Binding Theses & Reports

- Quality materials
- Craftsmanship and competitive prices
- Latest technology to ensure perfect service

For further information please ring the Library Binding and Preservation Department
(27) 53733 Monday to Friday 0900-1600 or the
Library Thesis Binding and Sales Point (27) 53749 outside these hours.

uprint.com

Printing for You on the North Campus

**Full colour and black only
Digital Printing & Copying**

Hardback & Softback Binding

International Fax Bureau Service

Design for Posters, Flyers, etc.

T-Shirt & Mouse Mat Printing

Barnes Walls Building
University of Manchester
North Campus
Sackville Street, Manchester

Internal Telephone 63269
Email contact@u-print.com
Web www.u-print.com

Just The Job

Anna Lomas

Marketing and Events Manager, BCCD.

When Marketing and Events Manager Anna Lomas isn't working for the Business, Careers and Community Division (BCCD), you'll find her practicing her pirouettes or sharpening up her shim sham shimmy.



Sitting in a swivel chair on the fourth floor of Crawford House dressed in a smart black suit, you would never have guessed that Anna was a ballerina or a tap dancer, but in her spare time, she is in fact both.

From the age of six Anna attended the Northern Ballet School, performed for the English National Ballet, and left aged 18 to study English at The University of Nottingham. After her degree, like many graduates, she admits she wasn't sure what to do, but in 1999 she landed the job which would see her swiftly rise up the ranks of what was then the joint UMIST and University of Manchester Careers Service.

"Like a lot of English graduates I left with no idea of what I wanted to do, but knew that I liked the university environment," she says.

"I was hired as an admin assistant, and did that for about a year, and then every time

an opportunity came up to further my career I applied for it. Eventually I was given the opportunity to work in our Employer Liaison Office which is now part of the BCCD's Marketing and Events team."

Anna's role was created out of a demand to better promote the University to business and the community. It is her job to organise events for companies looking to recruit quality graduates, as well as events within the local community.

Anna manages SPICE – Student & Graduate Placements in Creative Enterprises. This NWDA-funded project helps students find work in creative industries and helps small businesses in Manchester recruit graduate talent. She is also responsible for the annual Creative City event, held in conjunction with the BBC and Granada, which is targeted at students looking to secure jobs in the media, performing arts and other creative fields.

Most recently, she also helped to organise an event to launch the new University to alumni and consulate staff at the British Consulate in New York.

"We were asked to go to New York by the alumni office. Our aim was promote the 2015 agenda to alumni and to set the foundations of a new alumni chapter in New York. It was a really successful event, a chance to hear what alumni think of the new University, and to visit an amazing city," she says.

"It is this kind of variety which makes it a really exciting and varied job."

Anna sees engaging the local community as one of the biggest challenges ahead of her: "I think the community can sometimes see the University as a bit of a threat, and I think it is a case of trying to show them how we can interact, how we are there for them and what we can offer," she says.

Next Issue is 15 November

News Contact

News and story ideas
Lisa McCarthy

Telephone 0161 275 2112
Email uninews@man.ac.uk
Deadline 5 November

Events Contact

Events and listings information
Philippa Adshead

Telephone 0161 275 2922
Email unievents@man.ac.uk
Deadline 5 November

Adverts Contact

Ads and distribution queries
Lorraine Harrop, Susan Howard

Telephone 0161 275 2113
Email uniads@man.ac.uk
Deadline 5 November