

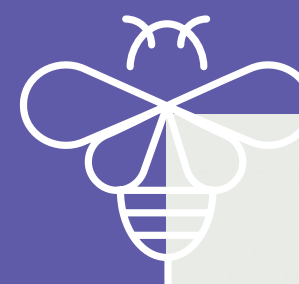
Accommodation exhibition	9.15am–3.45pm Alan Turing Building foyer (46)	Speak with staff from our accommodation, food in halls and ResLife teams about living in one of our halls of residence. They'll be able to talk you through the options available as well as the application process. Manchester Student Homes will also be able to chat to you about options after first year.
Accommodation presentation	9.30am–10am 10.30am–11am 11.30am–12noon 2pm–2.30pm 3pm–3.30pm Theatre B, University Place (37)	Learn about our accommodation and how to apply for a place.
Accommodation tours	10am – 3pm Meeting point at the Whitworth Building, Council Chamber entrance (51)	Please allow approximately 1.5 hours to complete the walking tour. All halls will close at 4pm prompt, so the latest advised time to leave campus is 3pm. Pick up your self guided walking tour route map from the meeting point. The route will allow you to view a selection of accommodation on our Victoria Park site.
Campus tours	9.15am–12noon 1pm–3.30pm Alan Gilbert Square, located behind the Alan Gilbert Learning Commons Building (63)	Departing at regular intervals, these 20-minute student-led tours will take you around the main areas on campus. Alternatively you can take a self-guided tour available via the open day app.
Go Abroad presentation	10.30am–11.30am 1pm–2pm Rutherford Lecture Theatre, Schuster Building (54)	This introductory session covers the opportunities to go abroad as part of your degree. Please note that this session is for students who are not studying a language course.
University Language Centre - LEAP (Language Experience for all Programmes) talk	12.15pm–12.45pm Room G20, Mansfield Cooper Building (65)	Find out more about the University-wide language programme for students who would like to learn a language alongside their degree.
Library and Learning Commons self-guided tour	9.30am–4pm Main Library (55) And 9.30am–4pm Alan Gilbert Learning Commons (63)	Two of the University's library sites will be open for you to visit throughout the day. Members of the Library Team will be available at both locations to answer any questions you may have.
Open day exhibition	9.15am–3.45pm Whitworth Hall (50)	Drop by to find out more about the student experience at Manchester. The exhibition includes information on University services including Disability Advisory and Support Service, student wellbeing, sport, volunteering, University College for Interdisciplinary Learning, Ethical Grand Challenges, Library, Go Abroad, IT support, the University Language Centre, student finance, careers, peer support and widening participation.
Sport presentation	10.45am–11.30am Theatre A, Simon Building (59) Or 12.30pm–1.15pm Theatre B, Simon Building (59)	This introductory talk highlights the diverse range of opportunities available through UoM Sport during your degree programme. From introductory level activity through to sports scholarships, UoM Sport provides a variety of options aimed at every level. Discover how you can enhance your academic experience and enrich your university journey.
Students' Union tour	10am–3.30pm Students' Union (68)	Departing at regular intervals, members of the Students' Union Exec Team will show you around our fantastic facilities. It's also a great place to grab a bite to eat at the 532 Bar and Kitchen.
The Manchester student experience presentation	9.15am–9.45am 10am–10.30am Nancy Rothwell Building, Theatre A (24) Or 12.45pm–1.15pm 2.45pm–3.15pm Theatre A, Roscoe Building (53)	This session provides a flavour of what it's like to live and study in Manchester and some of the key features of the University and city. In particular, find out about the extra and co-curricular activities on offer to help students learn more about the ethical, social and environmental issues facing the world today.



Download 'Visit UoM' for details of all subject sessions throughout the day



MANCHESTER OPEN DAY WELCOME TO MANCHESTER



Building key

- 63

Alan Gilbert Learning Commons
- 46

Alan Turing Building
- 29

Alliance Manchester Business School
- 36

Arthur Lewis Building
- 26

Booth Street East Building
- 61

Chemistry Building
- 31

Crawford House
- 24

Nancy Rothwell Building
- 93

George Kenyon Building
- 35

Humanities Bridgeford Street
- 89

James Chadwick Building
- 92

Jean McFarlane Building
- 39

Kilburn Building
- 55

Main Library
- 44

Manchester Museum
- 65

Mansfield Cooper Building
- 42

Martin Harris Centre for Music and Drama
- 71

Michael Smith Building
- 53

Roscoe Building
- 67

Samuel Alexander Building
- 54

Schuster Building
- 59

Simon Building
- 79

Stopford Building
- 68

Students' Union
- 22

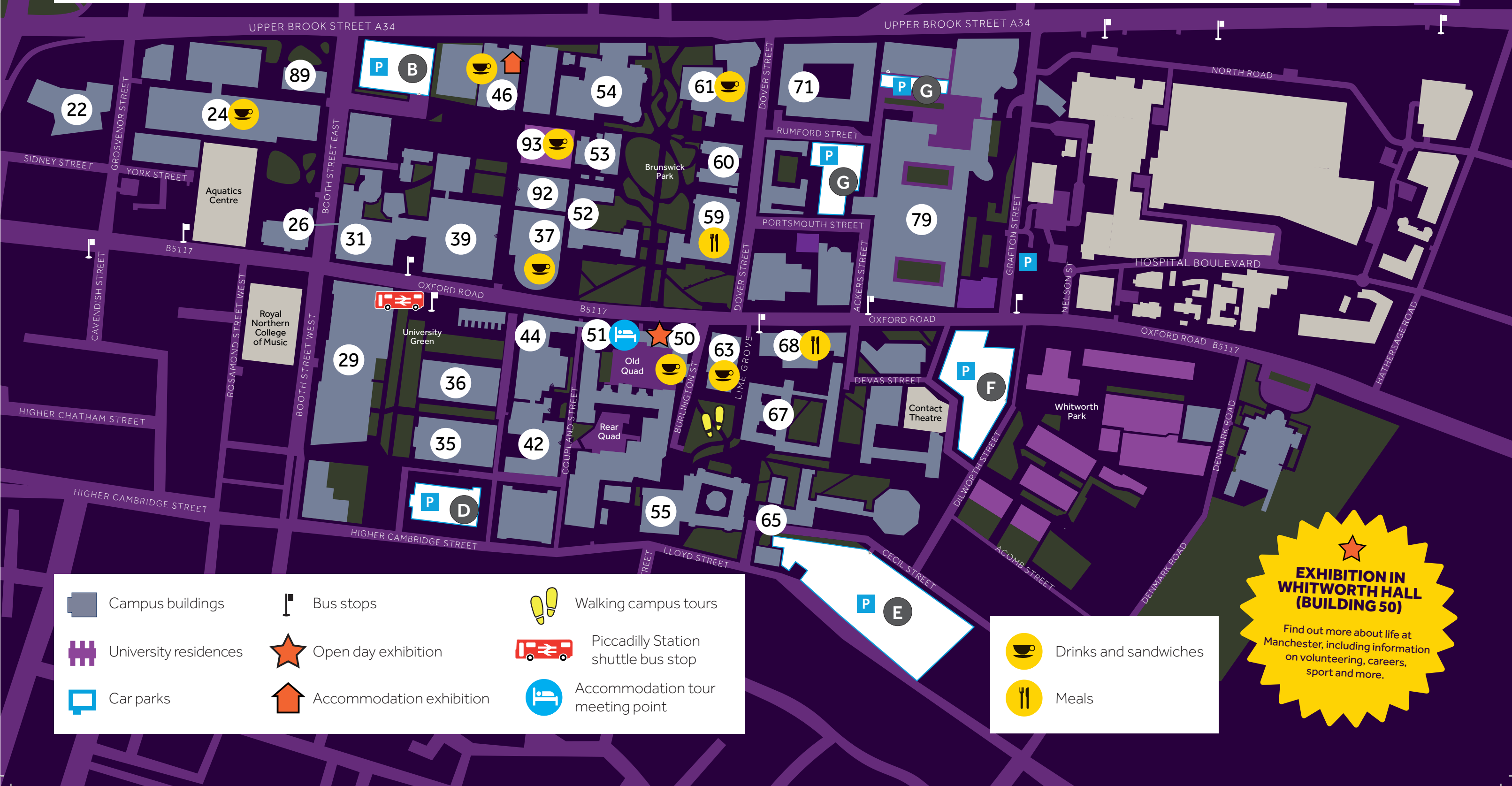
Sugden Sports Centre
- 37

University Place
- 50

Whitworth Hall
- 52

Williamson Building
- 60

Zochonis Building



- Campus buildings

University residences

Car parks

Bus stops

Open day exhibition

Accommodation exhibition

Walking campus tours

Piccadilly Station shuttle bus stop

Accommodation tour meeting point
- Drinks and sandwiches

Meals
- EXHIBITION IN WHITWORTH HALL (BUILDING 50)**

Find out more about life at Manchester, including information on volunteering, careers, sport and more.