

MANCHESTER
1824

The University of Manchester

Policy@Manchester

GM POLICY HUB

GM Policy Hub update August 2024



Manchester Measuring Inequalities Toolkit

July saw the launch of the Manchester Measuring Inequalities Toolkit, supported by Policy@Manchester.

Produced by academics at the University, in partnership with Manchester City Council, the toolkit forms part of the Making Manchester Fairer programme.

The methods presented in this open-access resource can be used to investigate inequalities in any setting.

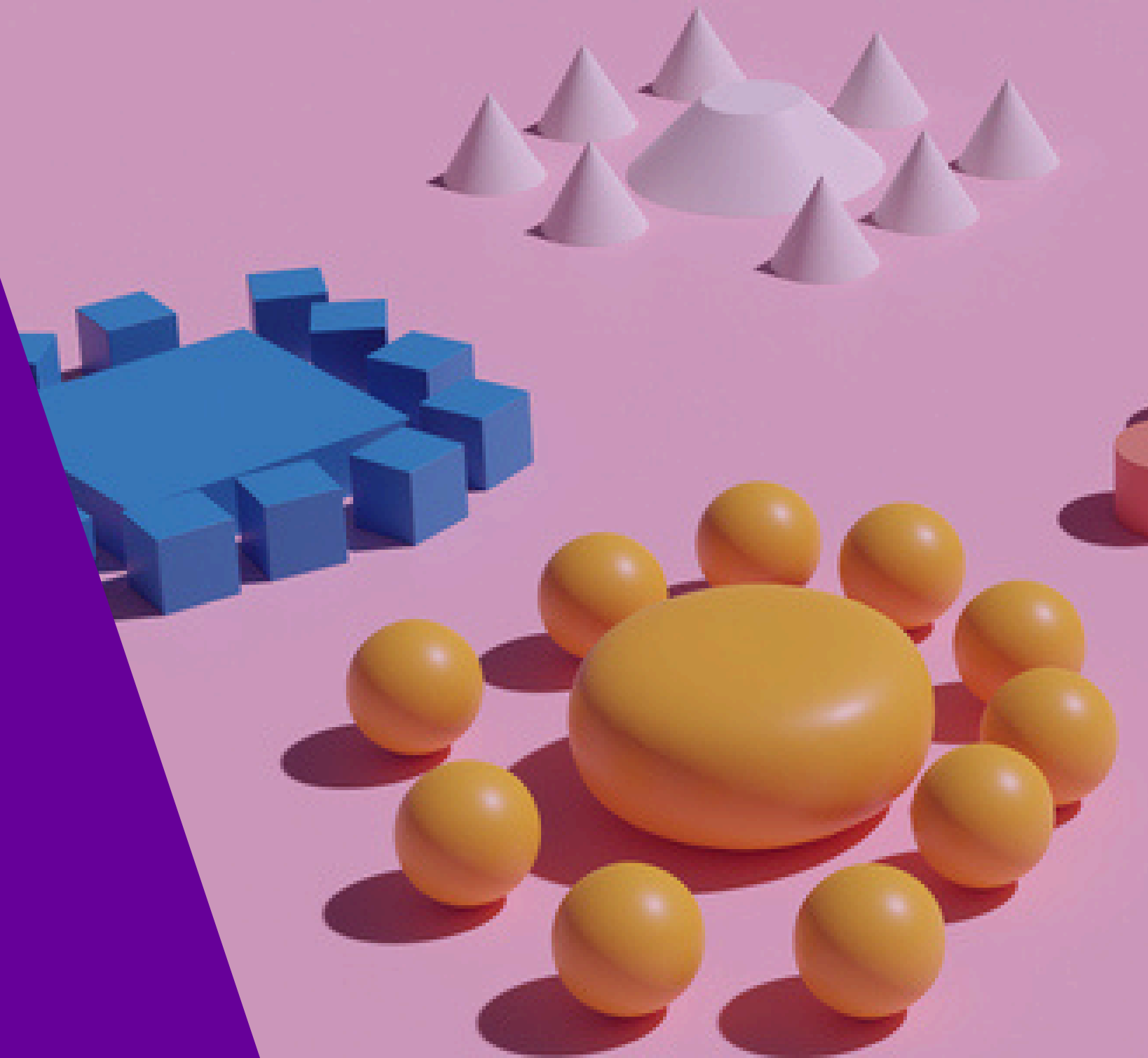
[Explore the toolkit here](#)

GM Policy Hub seminar series 2023-24

We have now concluded our 2023-24 GM Policy Hub seminar series and [recordings](#) are available for the following seminars:

- Women's safety in public spaces
- Community-centred approaches to active travel policy
- Uncertain Futures: economic inactivity and inequalities
- Artificial intelligence and future transport and mobility

[Sign up to our mailing list](#) to receive updates about next year's seminars.



GM Analysts Network

In May, we hosted the Greater Manchester (GM) Analysts Network, bringing together specialists from all ten of GM's local authorities.

Guests heard from a range of speakers leading cutting-edge data science projects across the region.

Professor David Topping introduced attendees to the NERC Digital Solutions Hub (DSH), which will bring together over 40 petabytes of the Natural Environment Research Council's data with socioeconomic, health, and other environmental data, making it easily accessible to policymakers, enabling more efficient and effective solutions to complex issues.

[Read more about the DSH in David Topping's article](#)



MANCHESTER
1824

The University of Manchester

Policy@Manchester

GM POLICY HUB

[Visit our website](#) | [Read our articles](#) | [Sign up to our newsletter](#) | [@UoMPolicy](#) |
[LinkedIn](#) | [Contact us](#)