

MANCHESTER
1824

The University of Manchester

Faculty of Biology,
Medicine and Health

POST- GRADUATE COURSES IN NURSING

COURSES DESIGNED FOR YOUR
PROFESSIONAL DEVELOPMENT



CONTENTS

INTRODUCTION	3.
WHY MANCHESTER?	4.
LIFE-CHANGING RESEARCH	5.
A SNAPSHOT OF RECENT DISCOVERIES	6.
STUDYING AT MANCHESTER	9.
MY EXPERIENCE	10.
A WORLD OF OPPORTUNITIES	12.
COURSES	13.
CONTACT US	14.

NURSING

At Manchester



Further your career with new skills and knowledge from our postgraduate courses.

Whether you're looking for a pre-registration or post-registration course, our postgraduate taught courses offer scope to specialise or learn about a new area of nursing or healthcare.

Our courses will enable you to enhance your practice by acquiring, developing and critically appraising new knowledge and skills.

WHY MANCHESTER?

World-renowned

We are a recognised international leader in education for nurses; Manchester is ranked 2nd in the UK and 6th in the world for nursing study.

QS World Rankings 2024

<h3>1st</h3> <p>The University of Manchester is ranked 1st in the UK and 2nd globally for social and environmental impact.</p> <p>THE University Impact Rankings 2024</p>	<h3>Top city</h3> <p>Manchester is ranked among the best UK cities to live in.</p> <p>2nd in The Economist's Global Liveability Index, 2024</p>
---	---

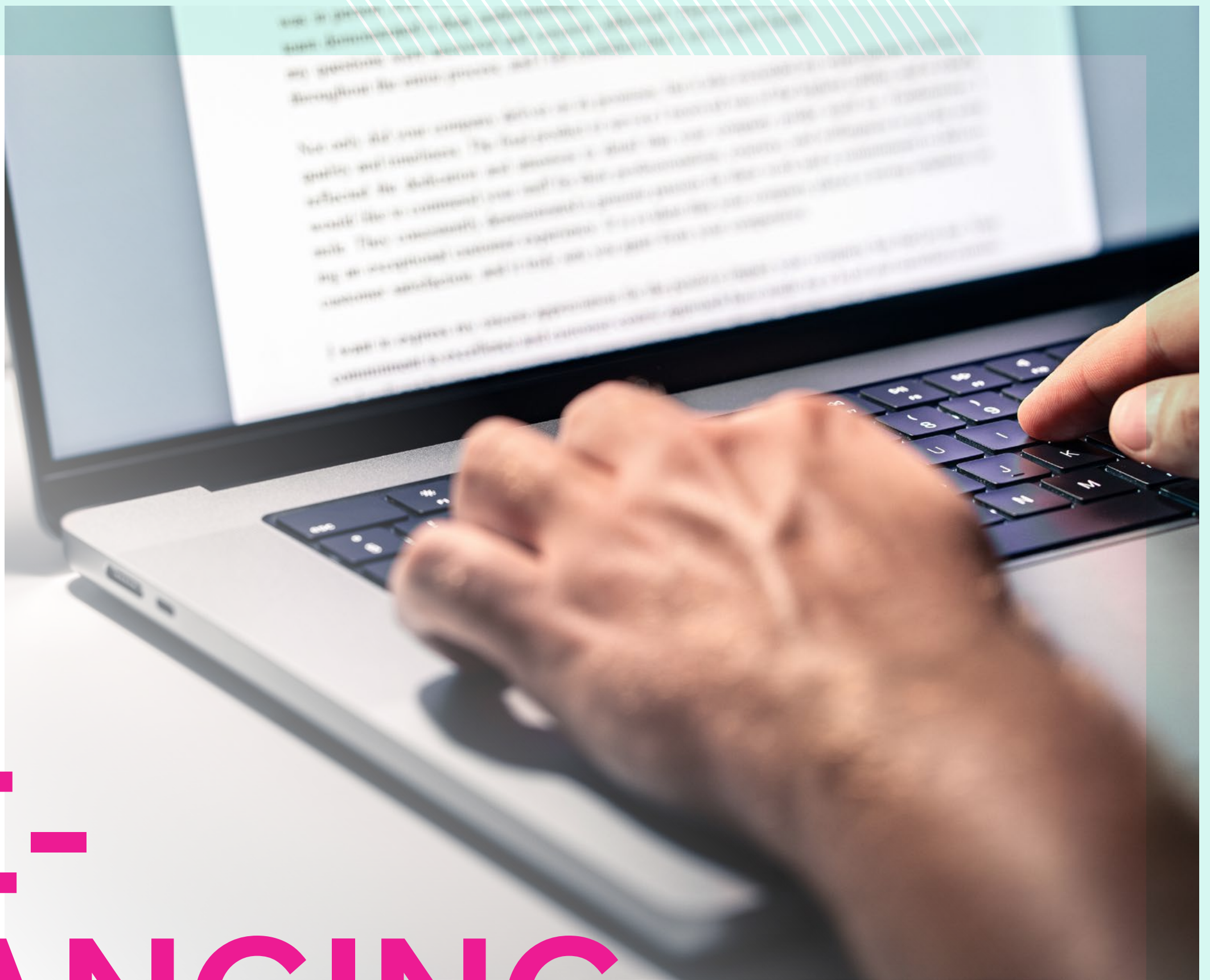
Personal development

Some of our postgraduate courses enable nurses and allied health professionals to specialise in a specific field or develop new skills within their existing roles. If you want to specialise in clinical nursing, mental health, paediatrics or oncology, our courses can equip you with the skills and knowledge you need to make your next career move.

<h3>We have history</h3> <p>The first nursing degree in England was established in Manchester by the former School of Nursing Studies. The first professor of nursing in England was also appointed here.</p>	<h3>2nd</h3> <p>We are the second most targeted university by the UK's top 100 recruiters.</p> <p>The Graduate Market 2024</p>
---	--

93%

of the University's research activity has been assessed as 'world-leading' or 'internationally excellent'. You'll benefit from studying in a research-intensive environment. Manchester was ranked in the top three universities for nursing and allied health professions research in the REF 2021, and researchers are among the teaching staff on our postgraduate courses.



LIFE- CHANGING RESEARCH

Our researchers contribute to society, and improve healthcare and education through innovative discoveries and new knowledge.

By choosing Manchester, you will be joining a university at the forefront of research discoveries, but what does that mean for you?

- > You'll study in an academic environment that helps brilliant thinkers turn inspiration into reality, encouraging enterprise, experimentation, and creative thinking.
- > You will learn on courses informed by the latest breakthroughs.
- > You will be taught by experts with first-hand knowledge of innovations and developments in their disciplines.
- > Learn from world-leading minds with close links to industry and a commitment to making a difference.

A SNAPSHOT OF RECENT DISCOVERIES

Postgraduate nursing courses at Manchester contribute to life-changing research, having a real impact on people's lives.



STAND- INDONESIA SUSTAINABLE TREATMENT OF ANXIETY AND DEPRESSION IN INDONESIA

Fourteen million people live with depression and anxiety in Indonesia, placing it in the top two countries for prevalence in the World Health Organisation's (WHO) South-East Asia region. This programme aims to improve individual and population health outcomes in Indonesia by boosting equitable access to sustainable, evidence-based treatments for depression and anxiety.

[DISCOVER MORE ►](#)



IMPROVING THE HEALTH OF OLDER PEOPLE

The University of Manchester is a partner in KOKU, a digital strength and balance programme to prevent physical decline and frailty. Trials found that high usability of KOKU improved outcomes in balance, health status and confidence after 6 weeks independent use.

[READ MORE ►](#)

YOUNG PEOPLE AND MENTAL HEALTH

A study led by University of Manchester researchers has found that young people seeing GPs for mental health problems have low ongoing contact. The results provide some insight into what happens next for these children and suggests that for most of the young people, the problems they experience will be transient, or that they may receive the support they need outside of medical settings.

[DISCOVER MORE ►](#)





DEVO MANC LED TO HEALTH IMPROVEMENTS

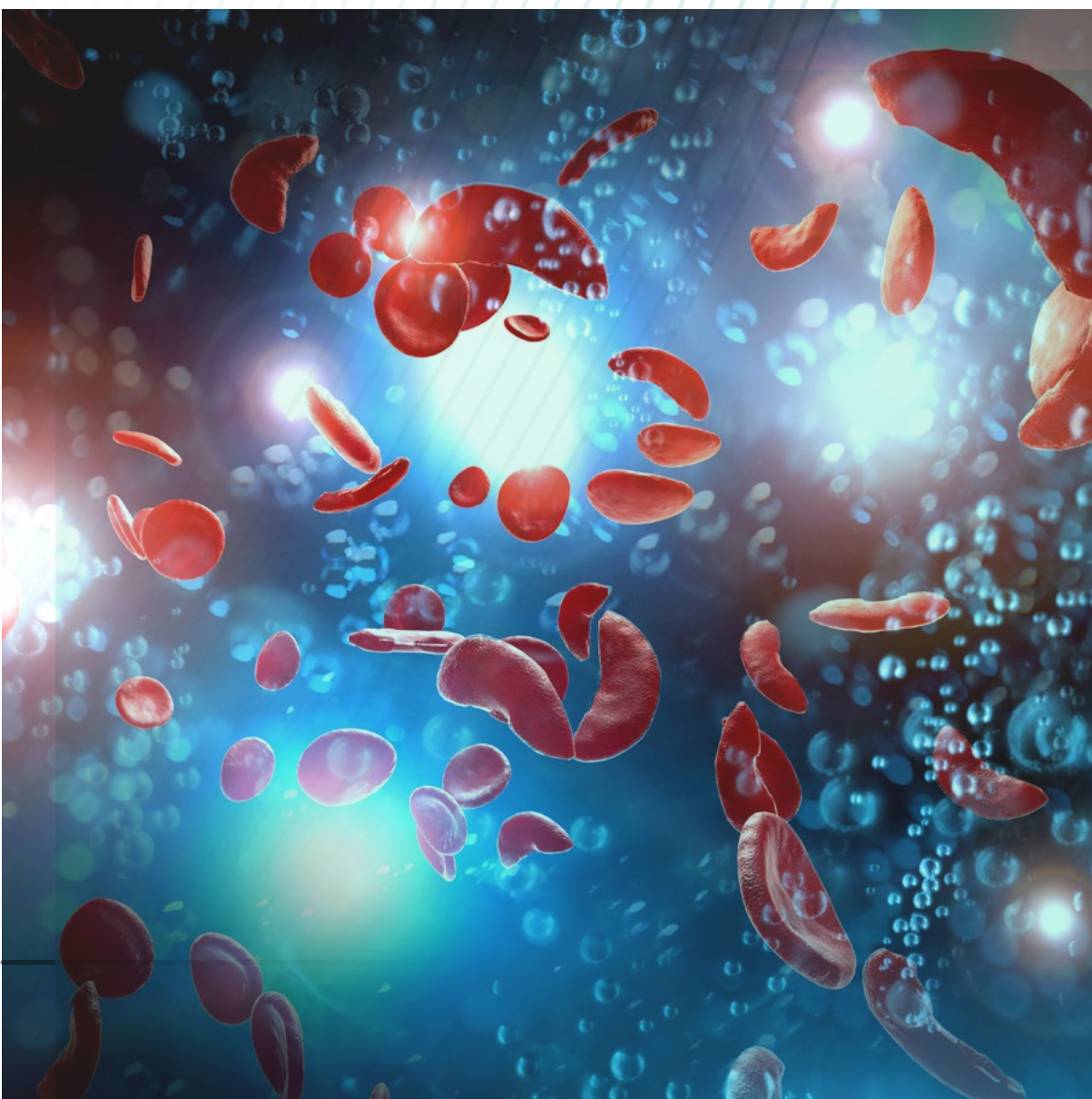
The devolution deals that granted Greater Manchester increased control over a range of public services enabled significant improvements to be made in many parts of the health system, a unique study led by University of Manchester researchers has shown.

[READ MORE ►](#)

CHILDREN AND YOUNG PEOPLE WITH SICKLE CELL DISEASE

This project aimed to reduce the impact of fatigue in children and young people (CYP) with sickle cell disease (SCD) by working together with those affected, their parents and healthcare professionals to guide the co-development of a fatigue self-management intervention.

[FIND OUT MORE ►](#)



EDITION: DEVELOPMENT AND EVALUATION OF A DE-ESCALATION TRAINING INTERVENTION

All National Health Service staff are trained in de-escalation (psychosocial techniques to manage distress without containment) to manage aggression and unsafe behaviour, but there is little to no evidence supporting the training's effectiveness. This study examined and evaluated feasibility, training and clinical safety outcomes.

[FIND OUT MORE ►](#)

WHAT IS IT LIKE STUDYING A POSTGRAD COURSE AT MANCHESTER?

"My third unit, Developing Practice and Managing Change, will impact positively on my future practice as a senior nurse. It delivered a wide range of ideas and practical suggestions to improve practice in what can be a very challenging area."

DAVID WRIGHT

MSc Specialist Practice
(Cancer) graduate.



"In Singapore, I was a full-time nurse doing shift work alongside pursuing my master's at The University of Manchester. Balancing both of these things was one of the toughest things I have ever done. Understanding my situation, Prof Gunn Grande and Dr Jane Griffiths rendered excellent support throughout. I did a phenomenology study as part of my master's study and Dr Jane would check on me via Skype to ensure that everything was going OK and I was getting the support I needed."

SHEENA RAMAZANU

BNurs and MClinRes graduate.

"The programme so far has really helped to increase my confidence in the classroom and lecture theatre. I have felt encouraged to try new approaches in my teaching, challenging my teaching practice and seeking feedback to facilitate my growth and development as an educator. This has been helped greatly by the very supportive and expert programme team who have been so supportive; their passion for teaching and learning has definitely had a positive impact on me."

KAREN HEGGS

Returned to the University as a lecturer.

READ MORE
POSTGRADUATE
BLOGS →

MY EXPERIENCE

Jia Zeng is a Chinese graduate of the MSc Advanced Leadership for Professional Practice course at Manchester. Here, Jia talks about the highlights of the course and life at Manchester.

"I wanted to further my education and experience by studying in another country, to broaden my horizons and gain a different perspective on education. I chose Manchester because it has high rankings in nursing, and I also hoped to expand my knowledge in leadership."





WHAT I GOT OUT OF THE COURSE

This programme enabled me to develop critical thinking skills and provided the knowledge and skills to enhance professional practice and prepare for leadership roles.

It is multifaceted and integrative, allowing me to view and approach care from a more holistic and developmental perspective.

Besides the mandatory courses on leadership and practice, the programme offers a wide variety of options, enhancing my understanding of different areas and guiding my choice of study direction.

ENJOYING MANCHESTER STUDENT LIFE

Studying in Manchester has been a fantastic experience. I love the city and The University of Manchester. The people are very friendly, and it's highly multicultural, with a deep respect for all perspectives.



"Cherish the time you spend studying here, then find what you are really interested in and enjoy the journey!"

The faculty is very professional, and I have learned a great deal here. The tutors are very supportive, and the lessons are delivered in various formats. Overall, studying in Manchester has been an enjoyable and enriching experience.



A WORLD OF OPPORTUNITIES

As a Manchester graduate, your skills will set you apart and prepare you for an exciting future.

Our courses help you develop expert knowledge and professional competencies so you can make a positive impact on care.

Our alumni work in a range of careers in the NHS and across other healthcare services such as Addaction, Six Degrees Social Enterprise, in education and hospitals around the world.

Roles include:

- > Specialist Nurse
- > Occupational Therapist
- > Dietician
- > Clinical Director
- > Research Ethics and Governance Officer
- > Senior Research Nurse
- > Speech and Language Therapist
- > Research Nurse
- > Radiographer
- > Consultant Paramedic
- > Health and Social Care Lead
- > Social Worker
- > Psychological Wellbeing Practitioner
- > Life Coach
- > High Intensity Cognitive Behavioural Therapist
- > Clinical Services Manager (IAPT)
- > Lecturer
- > Mindfulness Facilitator
- > Best Interest Assessor
- > Hospital Case Manager

COURSES

PROFESSIONAL DEVELOPMENT COURSES

- > [Advanced Leadership for Professional Practice](#) (Nursing)
- > [Specialist Practice](#) (Cancer) (MSc)

MENTAL HEALTH COURSES

- > [Approved Mental Health Professional Practice](#) (PGCert)
- > [Primary Mental Health Care](#) (PGCert)

PHARMACY COURSES

- > [Independent Prescribing](#) (short course)

RESEARCH-FOCUSED COURSES

- > [Clinical Research](#) (MClinRes)
- > [Health and Social Care](#) (MRes)

SPECIALIST AND ADVANCED CLINICAL PRACTICE COURSES

- > [Advanced Clinical Practice](#) (Paediatrics) (MSc)
- > [Transformative Oncology](#) (MSc/PGDip/PGCert)

OTHER COURSES

- > [Medical and Health Education](#) (PGCert)



We also offer a pre-registration course in [Adult Nursing \(MSc\)](#), for people who already have a degree in another subject, and would like to become a nurse.

PHD WITH INTEGRATED MASTER’S

If you’re planning to undertake a PhD after this master’s, our Integrated PhD programme will enable you to combine this postgraduate taught course with a related PhD project. [Learn more about the Integrated PhD programme](#)

CONTINUING PROFESSIONAL DEVELOPMENT

Our CPD course units and workshops draw on the expertise of some of the UK’s most respected academics, clinicians and health professionals. [Nursing CPD at Manchester](#)





CONTACT US

Nursing Admissions Team
The University of Manchester

+44 (0)161 529 4563
pgtaught.nursing@manchester.ac.uk

Connect with us:



DISCLAIMER

This prospectus was produced in July 2024. It has therefore been produced in advance of course starting dates. As such, for a number of reasons, course information, including, for example, details of course content, unit availability and/or published term dates, may be amended either prior to or after you apply for a place on a course.

All information relating to tuition fees and funding is correct at the time of publication. However, this may change for a number of reasons, including if there is a change to government policy.