



M
C
H
E

MANCHESTER CENTRE
FOR HEALTH ECONOMICS

NEWSLETTER

IN THIS ISSUE

- Breast CANcer Risk Assessment in Young women: BCAN-RAY
- The benefits, harms and costs of surveillance for liver cancer in people with cirrhosis
- NIHR Patient Safety Research Collaboration's Economics of Safety Group launch
- Student Spotlight: Garima Dalal

FROM THE CENTRE LEAD

WELCOME!

Welcome to the Spring 2024 edition of our MCHE Newsletter!

We're excited to share some of our most recent achievements and updates with you. There is a lot happening in our diagnosis and screening research themes. We continue our research in risk-stratified breast cancer screening with our latest CRUK-funded study, have a newly-funded PhD in lung cancer screening, and have just started new research in liver cancer surveillance, which links closely to other MCHE work in silent liver disease diagnosis.

The launch of the new NIHR Patient Safety Research Collaboration includes economics of safety work funded across three of the four themes, and this is highlighted in this issue. Our student spotlight highlights both MCHE's methodological expertise in discrete choice experiments, and our

commitment to work that addresses the crucial issue of inequality in health care uptake.

In addition, MCHE members continue to excel in obtaining personal awards from doctoral and postdoctoral fellowships to NIHR Senior Investigator.

We hope you enjoy reading about our work as much as we have enjoyed doing it.

Rachel



CONTACT US

Manchester Centre for Health Economics (MCHE)
Division of Population Health, Health Services Research and Primary Care
Faculty of Biology, Medicine and Health
4th floor, Jean McFarlane Building
The University of Manchester
Oxford Road
Manchester M13 9PL



research.bmh.manchester.ac.uk/healthconomics



@HealthEcon_MCR

Centre Lead

Prof Rachel Elliott
rachel.a.elliott@manchester.ac.uk

Administrator

Matthew Ward
matthew.ward@manchester.ac.uk



BREAST CANCER RISK ASSESSMENT IN YOUNG WOMEN: BCAN-RAY

For a number of years, researchers in MCHE have contributed to research on the potential use of breast cancer risk prediction in breast cancer screening. In a risk-stratified breast cancer screening programme, women would have their 10-year risk of breast cancer predicted using a combination of questionnaires, breast density measurements and genetic information. Women predicted to be at higher risk of cancer would receive more frequent cancer screening while those predicted to be at lower risk would receive fewer screens to reduce the risk of overdiagnosis.

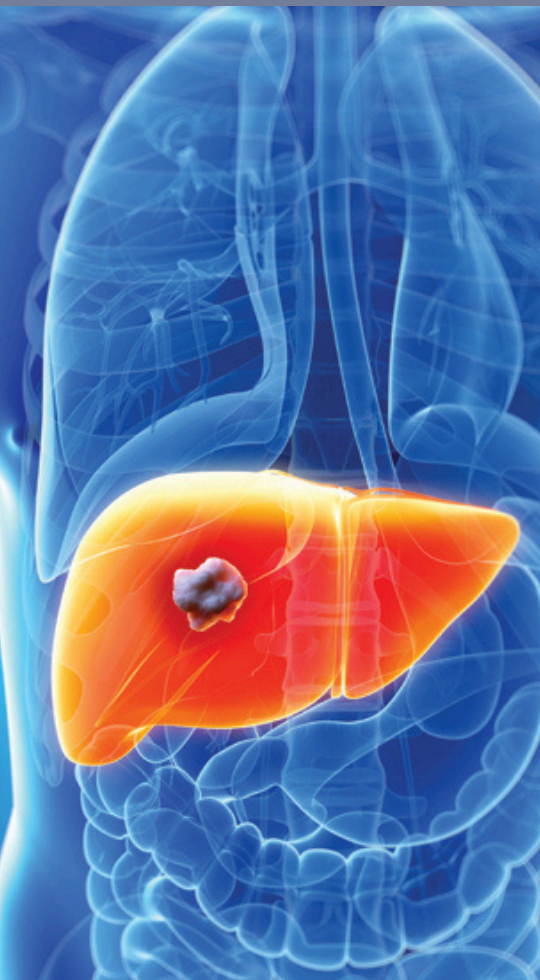
While risk-stratified breast cancer screening may help to catch more cancers than current practice of universal 3-yearly screening, nearly 20% of breast cancers occur in women who are too young to take part in the national screening programme. A new study named Breast CANcer Risk Assessment in Young women (BCAN-RAY), funded by Cancer Research UK, aims to explore the potential benefits

and acceptability of offering women the opportunity to have their risk of breast cancer predicted between the ages of 30 and 39.

One project work package, led by Dr Stuart Wright and Prof Katherine Payne, aims to use a discrete choice experiment to understand the preferences of young women for design features of the risk prediction strategy and to predict potential uptake for the service in the NHS. This work package will also specifically seek to understand the preferences of women from groups who are poorly served by the current screening programme. The results of this work, combined with in-depth qualitative interviews conducted in another work package, will help to inform the design of a potential risk-prediction strategy which meets the needs of different groups of young women in the NHS.



THE BENEFITS, HARMS AND COSTS OF SURVEILLANCE FOR LIVER CANCER IN PEOPLE WITH CIRRHOSIS



Gabriel Rogers (Senior Research Fellow) has been awarded funding from the NIHR to undertake an evidence synthesis looking at the benefits, harms and costs of surveillance for liver cancer in people with cirrhosis.

Back in 2007, Gabriel was a junior researcher on an NIHR-funded evidence synthesis looking at the same topic. Now, along with several co-authors from that original research and some new collaborators, we are revisiting the question.

The liver disease environment has changed beyond recognition over the past 15 years. There are many more cases, with a greater proportion in people who are overweight. We now have medicines that control viral liver disease and more treatment options for people who get liver cancer. Blood tests and liver scans to check for tumours have improved.

Over the same period, we have also learned a lot about how shared decision-making can best empower patients to manage their healthcare in

ways that are consistent with their values and goals. Despite all these changes, UK liver centres still do surveillance for cancer almost as they did 15 years ago.

The new project will involve systematic literature reviews, a health economic model and the development of a patient decision aid. We are collaborating with statisticians at the University of Bristol who are leading experts in synthesis of diagnostic test accuracy data. We will work with people with liver disease to produce outputs that can help patients to weigh up the benefits and harms of undergoing regular tests.

This project links well with other MCHE work: ID-LIVER focuses on identifying people with silent liver disease; this project is about one of the potential benefits of timely diagnosis – enhanced follow-up that will maximise the chances that any liver cancer that develops is spotted in its early and treatable stage.

NIHR PATIENT SAFETY RESEARCH COLLABORATION'S ECONOMICS OF SAFETY GROUP LAUNCH

In January 2024, the NIHR Patient Safety Research Collaboration's (PSRC) Economics of Safety Group Launch Event marked a significant milestone, providing researchers, providers, policy makers, patients and public participants with a collaborative platform.

Prof Rachel Elliott and Prof Chris Bojke, among other distinguished speakers, set the stage for thought-provoking discussions on methodological considerations, collaboration opportunities, sustainability in health economics and patient safety research. The event showcased a vision of cohesive collaboration among PSRC centres, laying a strong foundation for future knowledge sharing and advancements in patient safety through the economics of safety.

In April, the Economics of Safety Group commenced a seminar series with an insightful online session via Zoom led by Prof Rachel Elliott. The seminar highlighted the critical topic of estimating the impact on patient safety through the digital transfer of patients' prescription information in the English NHS. Engaging discussions ensued, emphasizing the need for further research and collaboration to enhance patient safety. This inaugural session underscored a collective commitment to advancing healthcare economics and patient safety.

The successful launch event and seminar series have set the stage for ongoing collaboration, research, advancements in patient safety and health economics. These initiatives have not only fostered knowledge sharing and idea exchange but have also paved the way for meaningful contributions to the future of patient safety and healthcare efficiency.

For more information, please visit: <https://www.psrc-gm.nihr.ac.uk/2024/01/31/safety-net-launches-the-nihr-psrc-economics-of-safety-network/>

<https://www.psrc-gm.nihr.ac.uk/>

NIHR | Greater Manchester Patient Safety Research Collaboration



STUDENT SPOTLIGHT: GARIMA DALAL



Garima started her NIHR Doctoral Research Fellowship at the University of Manchester in 2023. She is jointly supervised by Prof Katherine Payne, Dr Stuart Wright and Prof Phil Crosbie. Prior to starting her PhD, Garima worked as a Research Associate in MCHE on a number of projects involving discrete choice experiments (DCEs), economic evaluation, eye-tracking and patient decision aids. She has a masters degree in Health Economics and Decision Modelling from the University of Sheffield.

The main focus of Garima's fellowship is understanding the impact of accounting for uptake on the cost-effectiveness of

targeted lung screening. Cancer screening programmes often experience low participation rates from minority ethnic groups and those living in deprived areas. For the recently recommended targeted lung screening programme to be successful, it's important to ensure uptake from all eligible members of the target population, including those from a minority ethnic background and those living in deprived areas.

Garima's fellowship will use a DCE to quantify preferences for a national targeted lung screening programme and to predict uptake while investigating the use of internal validity checks in DCEs. She will also use eye-tracking to understand how participants complete DCEs. Predicted uptake rates for different subgroups of the eligible population will then be used in an existing decision-analytic model of lung screening to understand their impact on cost-effectiveness.

MCHE SEMINARS

Dr Janet Bouttell
Research Fellow
University of Glasgow
25 September 2023

Dr Edward Webb
Research Fellow
University of Leeds
23 October 2023

Dr Xiaoxiao Ling
Researcher in Health Economics
University of Oxford
27 November 2023

Dr Mark Harrison
Associate Professor
University of British Columbia
4 December 2023

Prof Heather Brown
Professor of Health Inequalities
Lancaster University
29 April 2024

Dr Tom Callender
Senior Clinical Research Fellow
University College London
10 June 2024

RECENT MCHE PRESENTATIONS

Elliott RA, Paterson L, Camacho EM. The cost-effectiveness of preserving independence in people with dementia. Australian Health Economics Conference, Adelaide September 2023.

Taylor A, Elliott R, Roberts S et al. Evaluating the National rollout of a pharmacist-led information technology intervention (PINCER) in English general practice. 51st NAPCRG Annual Meeting. Oral presentation, 2023.

Elliott RA, Camacho E, Gavan SP, Keers R, Chuter A. Estimating the Economic Impact of Enabling the Digital Transfer of Patients' Prescription Information in the English National Health Service. ISPOR Europe 2023, Copenhagen, Denmark.

Gavan S, Elliott RA, Paterson L. Cost-Effectiveness Analysis of the NEON Intervention for People With Psychosis and Non-Psychosis Mental Health Problems. ISPOR Europe 2023, Copenhagen, Denmark.

Gavan SP, Paterson L, Rennick-Egglestone S et al. Mapping between the MANSA Quality of Life Instrument and EQ-5D-3L for Mental Health Problems. SMDM 2023 - 18th Biennial European Conference. Berlin, Germany.

Paterson L, Camacho E, and Elliott RA. The cost-effectiveness of preserving independence in people with dementia. Trinity College Dublin. November 2023.

Optimising medicines use: a health economics perspective. University of Queensland, Brisbane, Australia. 26 September 2023.

Elliott, R. Estimating the impact of enabling systems to share patients' medicines information digitally: the English example, FIP, Brisbane, Australia. 27 September 2023.

Heaps A, Gavan SP. Value of Information Analyses for Advanced Cell Therapies: A Systematic Review. 12-15 November. ISPOR Europe 2023, Copenhagen, Denmark.

Paterson L, Rennick-Egglestone S, Gavan SP, Slade M, Ng F, Llewellyn-Beardsley J, and Elliott RA. Development and delivery cost of digital health technologies for mental health: Application to the Narrative Experiences Online Intervention. Refocus on Recovery 2023, Nottingham, UK.

Gavan S, Elliott RA, Camacho E, Keers R. Estimating Undetected Medication Errors at Care Transitions: A Framework to Support Decision-Making. ISPOR Europe 2023, Copenhagen, Denmark.

IN OTHER NEWS...

Congratulations to Prof Katherine Payne who has been appointed as a NIHR Senior Investigator • Congratulations to Garima Dalal and Dr Stuart Wright who have been awarded doctoral and postdoctoral fellowships from the NIHR and Wellcome Trust, respectively • Congratulations to John McDermott who was awarded 2023 FMBH Postgraduate Research Student of the Year • Farewell to Prof Steve Birch and Prof Linda Davies who retired in 2023 • Farewell to Dr Liz Camacho who left MCHE in 2023 • Congratulations to Dr Stuart Wright who has won the Open Research Award and appointed Honorary Fellow of the Office for Open Research • Welcome to Doudou Zheng who has joined us as a PhD student • Welcome to Shabnam Thapa who has re-joined us as a Research Associate • Welcome to Amany Salem and Joe Hilton who have joined us as a Research Associate and Research Fellow, respectively • Welcome to Sasja Pedersen who has joined us from the University of Southern Denmark as a visiting PhD student.



RECENT MCHE PUBLICATIONS

Slade M, Rennick-Egglestone S, Elliott RA, et al. Effectiveness and cost-effectiveness of online recorded recovery narratives in improving quality of life for people with non-psychotic mental health problems: a pragmatic randomized controlled trial. *World Psychiatry*. 2024;23(1):101-112.

Carney R, El-Metaal H, Law H, et al. Motiv8: a study protocol for a cluster-randomised feasibility trial of a weight management intervention for adults with severe mental illness in secure forensic services. *Pilot Feasibility Stud*. 2024;10(1):48.

Camacho EM, Shields GE, Chew-Graham CA, et al. Generating EQ-5D-3L health utility scores from the Edinburgh Postnatal Depression Scale: a perinatal mapping study. *Eur J Health Econ*. 2024;25(2):319-332.

Grigoroglou C, Walshe K, Kontopantelis E, et al. Comparing the clinical practice and prescribing safety of locum and permanent doctors: observational study of primary care consultations in England. *BMC Med*. 2024;22(1):126.

Hodkinson A, Zghebi SS, Kontopantelis E, et al. Association of strong opioids and antibiotics prescribing with GP burnout: a retrospective cross-sectional study. *Br J Gen Pract*. 2023;73(733):e634-e643.

Bullement A, Stevenson MD, Baio G, Shields GE, Latimer NR. A Systematic Review of Methods to Incorporate External Evidence into Trial-Based Survival Extrapolations for Health Technology Assessment. *Med Decis Making*. 2023;43(5):610-620.

Thompson A, Youn JH, Guthrie B, Hainsworth R, Donnan P, Rogers G et al. Quantifying the impact of taking medicines for primary prevention: a time-trade off study to elicit direct treatment disutility in the UK. *BMJ Open*. 2023 Sept 21;13(9):e063800.

Elliott RA, Rogers G, Evans ML, et al. Estimating the cost-effectiveness of intermittently scanned continuous glucose monitoring in adults with type 1 diabetes in England. *Diabet Med*. 2024;41(3):e15232.

Shields GE, Rowlandson A, Dalal G, et al. Cost-effectiveness of home-based cardiac rehabilitation: a systematic review. *Heart*. 2023;109(12):913-920.

Whittaker W, Goodwin M, Bashir S, et al. Economic evaluation of a water fluoridation scheme in Cumbria, UK. *Community Dent Oral Epidemiol*. Published online March 25, 2024.

Bashir S, Whittaker W, Meads C. What Are the Economic Arguments for Mandating LGBT+ Health Training for Healthcare Providers? An Economic Evaluation of the Impacts of LGBT+ Health Training on Cervical Screening. *Behav Sci (Basel)*. 2024;14(3):260.

Camacho EM, Gavan S, Keers RN, Chuter A, Elliott RA. Estimating the impact on patient safety of enabling the digital transfer of patients' prescription information in the English NHS. *BMJ Qual Saf*. Published online March 26, 2024.

Gavan SP, Wright SJ, Thistlethwaite F, Payne K. Capturing the Impact of Constraints on the Cost-Effectiveness of Cell and Gene Therapies: A Systematic Review. *Pharmacoeconomics*. 2023;41(6):675-692.

Hainsworth R, Thompson AJ, Guthrie B, Payne K, Rogers G. International Systematic Review of Utility Values Associated with Cardiovascular Disease and Reflections on Selecting Evidence for a UK Decision-Analytic Model. *Medical decision making*. 2024 Feb 1;44(2):217-234.

Wright S, Vass C, Ulph F, Payne K. Understanding the impact of different modes of information provision on preferences for a Newborn Bloodspot Screening Programme in the UK. *Medical Decision Making Policy & Practice*. 2024 Mar 4.