

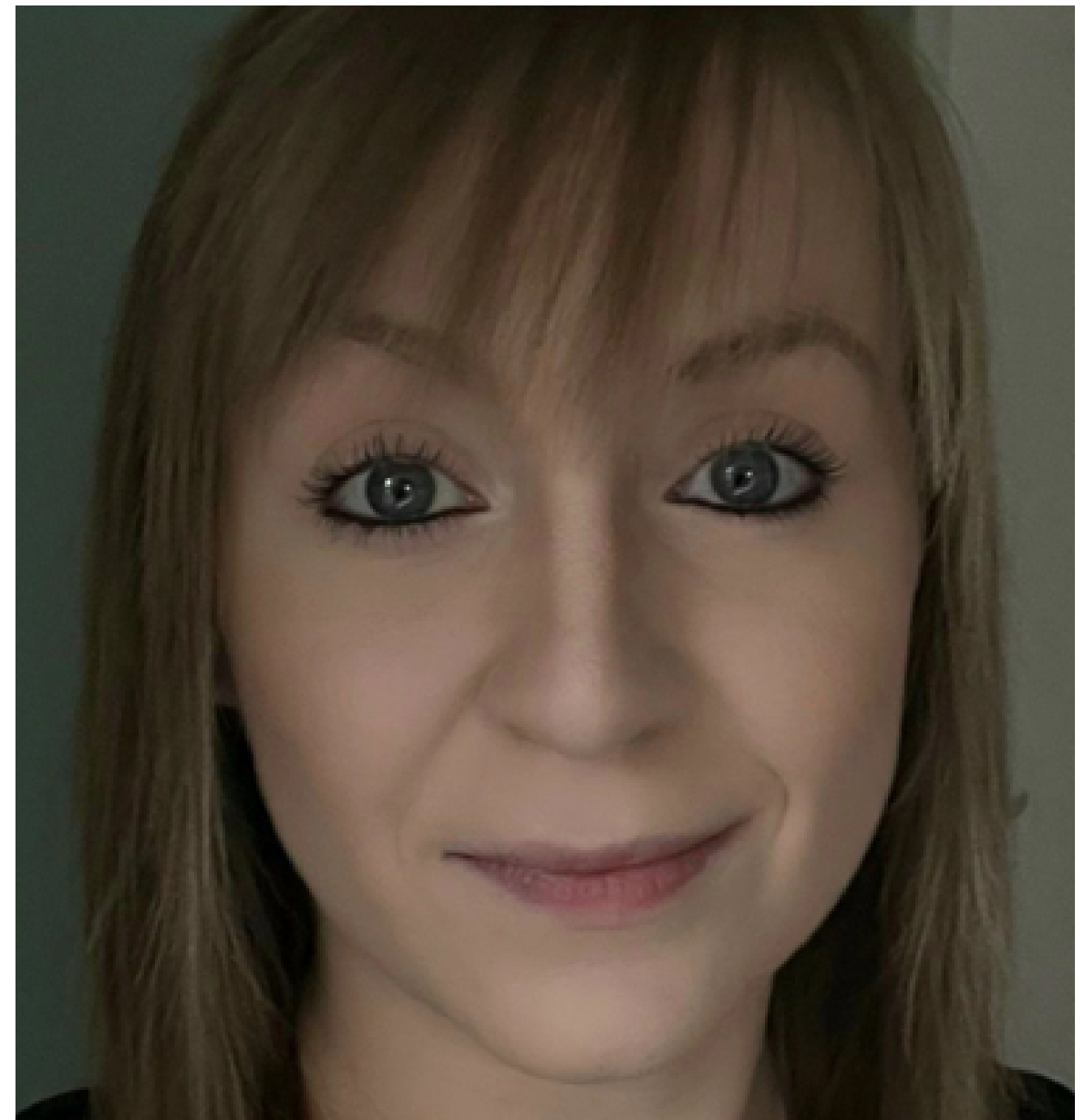
Division of Psychology and Mental Health

RESEARCH SEMINAR

WEDNESDAY 17TH

APRIL

12:00 - 13:00



An investigation of patients admitted to Medium Secure Psychiatric Care over a 30-year period:
Examining admission characteristics, re-conviction, readmission and mortality outcomes

Dr Jodie Westhead

Research Associate, National Confidential Inquiry into Suicide & Safety in Mental Health (NCISH) & NIHR Greater Manchester Patient Safety Research Collaboration (PSRC)

Centre for Mental Health and Safety, University of Manchester

****ONLINE EVENT****

ZOOM: REGISTER THROUGH TICKET TAILOR FOR LINK

REGISTER FREE VIA TICKET TAILOR:

<https://buytickets.at/universityofmanchester>

[2/1221157](https://buytickets.at/universityofmanchester)

FOR ACCESS TO THE ZOOM LINK