

# Celebrating our research with internal audiences

**Helen Pearce, Interim Internal Communications Manager**

**Mikaela Sitford, Internal Communications and Engagement Officer**

# Who are we?



**Helen Pearce**  
Interim Internal  
Communications Manager



**Mikaela Sitford**  
Internal Communications  
Officer (Research)



**Niki Harratt**  
Communications and  
Engagement Officer (RLP)



**Vicky Short**  
Change Communications  
Officer (RLP)



**Rachel Hobson**  
Internal Communications  
Manager (FSE)



**Danielle Moss**  
Internal Communications  
Manager (FSE)



**Ben Cawley**  
Communications and  
Content Manager (Hums)



**Katherine Lucarz**  
Internal Communications and  
Engagement Manager (BMH)



The University of Manchester

# Quiz

## What are the total number of StaffNet pages?


## How many stories have we shared in the last four months?

The screenshot shows the StaffNet website header with the University of Manchester logo and 'StaffNet' title. A search bar is in the top right. Below the header is a navigation menu with links for 'Working here', 'News', 'Departments', 'Resources', 'Community', and 'A-Z'. The main content area is divided into three columns: 'Featured news', 'News', and 'Announcements'. The 'Featured news' section highlights a story about Manchester being announced as a UNESCO City of Lifelong Learning, with a 'Joined in 2024' badge. The 'News' section lists several articles, including one about an open meeting with the Professional Services Leadership Team. The 'Announcements' section includes updates on recycling, network connectivity, and campus solutions.

This section shows a grid of content from the StaffNet website. On the left, there is a 'Wellbeing and support' section featuring an 'Employee Assistance Programme' with a 'FIND OUT MORE' button. Below this are two news items: 'Starting Well in 2024' and 'More than 80 staff attend active travel breakfast'. In the middle, there is an 'Our people' section with four news items: 'Swap Shop raises funds to support our students', 'Nirvana and Magha Puja Day', 'Vasant Panchami', and 'Observing Lent'. On the right, there is a 'President's weekly update' section with a photo of a woman and a 'Viewpoint' section with a speech bubble icon.

# Quiz

## How many staff read eUpdate?



The University of Manchester


### eUpdate

Bringing you the week's highlights from StaffNet News.

### Headlines

#### Manchester announced as UNESCO City of Lifelong Learning

Manchester is one of 64 cities, from 35 countries, to join the UNESCO Global Network of Learning Cities, with the University acting as a key partner.



Member  
Global Network of  
Learning Cities

Joined in 2024

[Read more](#)

### News

#### International Women's Day

This March we celebrate International Women's Day 2024 with a month of thought-provoking talks and events.

[Get involved](#)

### Dates for your diary

#### Coming up

Tuesday, 20 February - [Health Inequalities Employment and Productivity networking event](#)

Wednesday, 21 February - [UNE 2024](#)

Friday, 23 February - [Climate C](#)

Wednesday, 28 February - [Soci and Civic Engagement sessions](#)

Wednesday, 28 February - [Refl Humanities](#)

### Announcements

#### University response to UKRI announcement to increase PGR stipend

Our University is to increase investment in Postgraduate Researchers by raising the minimum stipend (the annual salary) for 2024/25.

[Find out more](#)

#### Staff benefits update

Boost your wellbeing this year with

[Find out more](#)

#### Open Research Fellow

The Office for Open Research is in

Fellows.

[Read more](#)

### Our People

#### Swap Shop raises funds to support our students

The Careers Information and Advice Team held a New Year Swap Shop with all proceeds going towards the Cost of Living Support Fund.

[Read more](#)

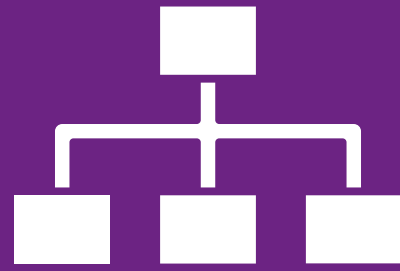
### Wellbeing

#### 'Starting Well in 2024'... Started Well

Our 'Starting Well in 2024' campaign in January offered colleagues the opportunity to engage with a range wellbeing activities.

[Find out more](#)

# Importance of Internal Communications



**Organisational  
purpose**



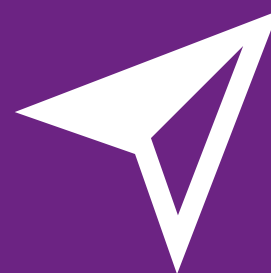
**Culture**



**Trusted source  
of truth**



**Connecting  
with people**



**Navigate change  
and crisis**



**Brand and  
reputation**

# Our research specific approach

**Research and Impact @ Manchester**

Information and support for our research community.



The University of Manchester

---

**A message from Colette**

Dear colleagues,

Welcome to the first Research and Impact @ Manchester of the academic year.

We have had a great start with the confirmation that the UK is re-joining the EU's £85 billion science research programme, Horizon Europe. This agreement will be a major boost for our community and the work we do as a research powerhouse that is first in Europe and second in the world for social and environmental impact in the THE Impact Rankings. I would urge all researchers to get ready to apply for Horizon schemes and projects.



We have a busy and productive year ahead, which also encompasses our bicentenary – thank you all for your hard work and commitment.

Kind regards,  
Professor Colette Fagan,  
Vice-President for Research

**Culture and environment**

<b>EU Horizon scheme – a major opportunity</b>	<b>Research Excellence Framework 2028</b>	<b>Improve your research impact</b>
The UK will officially associate to Horizon Euro January 2024 o protocol is sign more details on relevant project	The UK's higher education	Our University is providing new training to help research

**Postgraduate news**

<b>Your Voice heard loud and clear</b>	<b>Research Excellence Framework 2028</b>	<b>Congratulations to our showcase and excellence award winners</b>
The results are in for our PGR Voice Survey, which asked for feedback on a range of topics including overall experience, research environment, supervision, resources, training, and development	The UK's higher education funding bodies announced initial decisions on the next Research Excellence Framework (REF) which will	More than 120 PGRs took part in our Postgraduate Summer Research Showcase and MDC

**Transformation**

<b>Research Lifecycle Programme</b>	<b>Pure research information system</b>	<b>Planning for a Secure Research Environment</b>
The Research Lifecycle Programme (RLP) has been running for almost four years and is designed to transform our research IT environment. Here we celebrate its successes.	New module roll-out - find out what improvements are being made to provide an accurate, searchable interface for a wide range of stakeholders.	RLP is leading a consultation exercise to inform the development of a Secure Research Environment (SRE) at our University and will be talking to key stakeholders.

**Research security**

<b>Research Lifecycle Programme</b>	<b>Support for researchers in a changing world</b>	<b>Trusted Research - new government guidance films</b>
The Research Lifecycle Programme (RLP) has been running for almost four years and is designed to transform our research IT environment. Here we celebrate its successes.	Nalin Thakkar and Dave Polya discuss our changing world and how our research community	Watch five short videos explaining Trusted Research in general and in terms of

**Our people**

<b>First reliable test for dementia in people with hearing loss</b>	<b>Cost of living crisis and older ethnic minority people</b>	<b>Dalton Nuclear Institute win top Academy award</b>
Manchester scientists lead international study that has developed first fully validated and reliable cognitive test for people with hearing problems and is now available for use.	Policymakers, researchers, and community organisations are urged to consider culturally appropriate service models to tackle deeper inequalities in University-led report.	Congratulations to the team, who have won the Royal Academy of Engineering's 2023 Bhattacharyya Award in recognition of its "stellar" academia-industry collaboration with the nuclear decommissioning sector.

# How we can support you



**Keep you  
informed**



**Celebrate  
your success**



**Advice and  
guidance**

MANCHESTER  
1824

The University of Manchester

# Questions