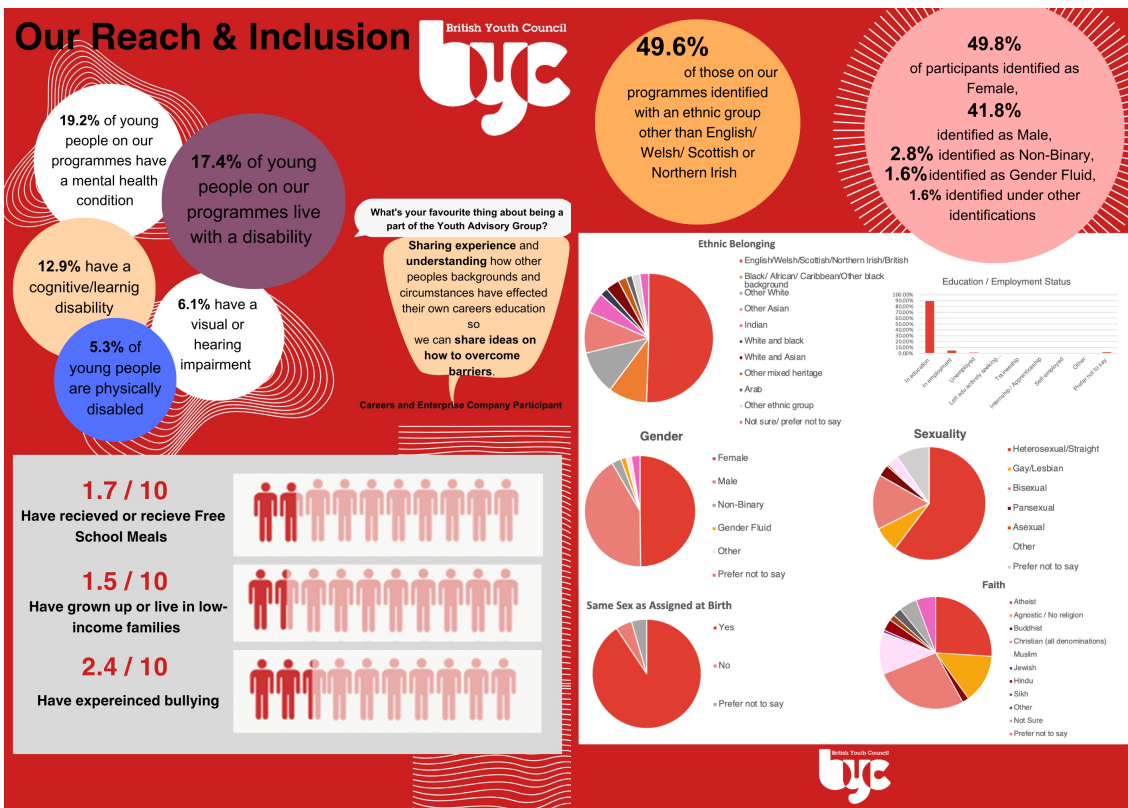


Annual Report - British Youth Council

# Reach, Inclusion and Impact Report

Elisa Kocadag | Sociology



Reach and Inclusion Findings

## Findings

Overall, this research found the reach and inclusion of the BYC over the past year, as well as the impact programmes had on young people. Some of the key results this found include...

### Reach and Inclusion –

- Ethnicity: 49.6% of participants on programmes identified as an ethnic group other than English/ Welsh/ Scottish or Northern Irish.
- Disability and Mental health: 17.4% of young people across programmes live with a disability. 19.2% of young people have a mental health condition.
- Gender: 48.9% identified as Female. 41.8% identified as Male. 2.8% as identified Non-binary and 1.6% as gender fluid.

### Impact of the British Youth Council -

- By the end of programmes: 82.7% of participants felt they were able to amplify the voices of other young people when talking to those in power. 75.5% felt they could engage well with decision makers.

## Overview of the Data Fellowship

For my data fellowship programme, I worked with the British Youth Council, a charity which focuses on giving a voice to young people in spheres of social life where their contributions are often overlooked. Throughout the eight weeks I spent with them I had different roles, regarding the data field of work. The main project I worked on was on a part of their annual report, where I went through their database, to pull out key trends from the past year. Other roles included, creating a feedback survey, inputting data into their system from handwritten responses, and analysing feedback data from the NHS youth forum programme for an end of project report.

## Data Analysis

In specific regard to the annual project I worked on, the data was collected through the online database and survey collection website, *Typeform*. This data came from feedback surveys of all programmes held within the past year, providing a general sense of the work the British Youth Council conducted and its impacts. Transferring this data to Excel, this is where I analysed the data. As different programmes collected their feedback in different forms (e.g. different categories for ethnicity), there was a large need to reorganise and recode much of the data. Then using Excel as a data analysis tool, I found key percentages figures under certain categories, to find, 'our reach and inclusion' and 'the impact of the BYC'. I also used this to create better visualisation, by producing bar charts and pie charts, then making this more presentable in a report format.

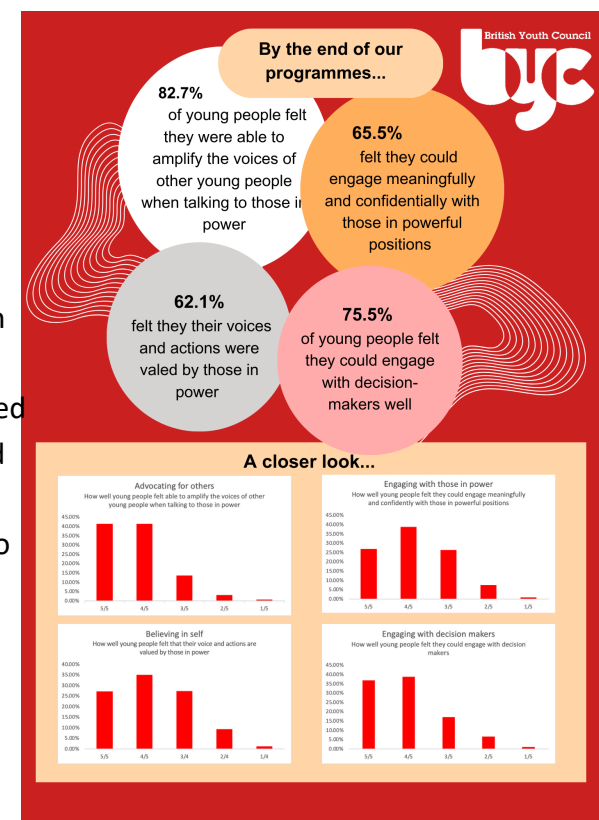
## Key Skills Learnt

### Research and Analytical Skills –

- Learnt how to better approach data, including how to organise and recode variables on a large dataset and selecting relevant information.
- Developed my technical skills on using Excel as a data analysis tool.
- Analysing and filtering information / Drawing conclusions – selecting which information was suitable, reflecting on these and presenting them in a visual format.

### Professional Skills –

- Learnt the environment of corporate workplaces, navigating this new space.
- Time management with completing given tasks.
- Working and collaborating with team- members.
- Communication skills, developed through frequent meetings and contributions. Further developed from reaching out to others on the team and organising meetings.



Impact of the British Youth Council Findings