

MANCHESTER
1824

The University of Manchester

Faculty of Biology,
Medicine and Health

POST- GRADUATE MEDICINE

OVER 145 YEARS
DELIVERING OUTSTANDING
MEDICAL EDUCATION.



CONTENTS

INTRODUCTION 3.

WHY MANCHESTER? 4.

LIFE CHANGING RESEARCH 5.

STUDYING AT MANCHESTER 8.

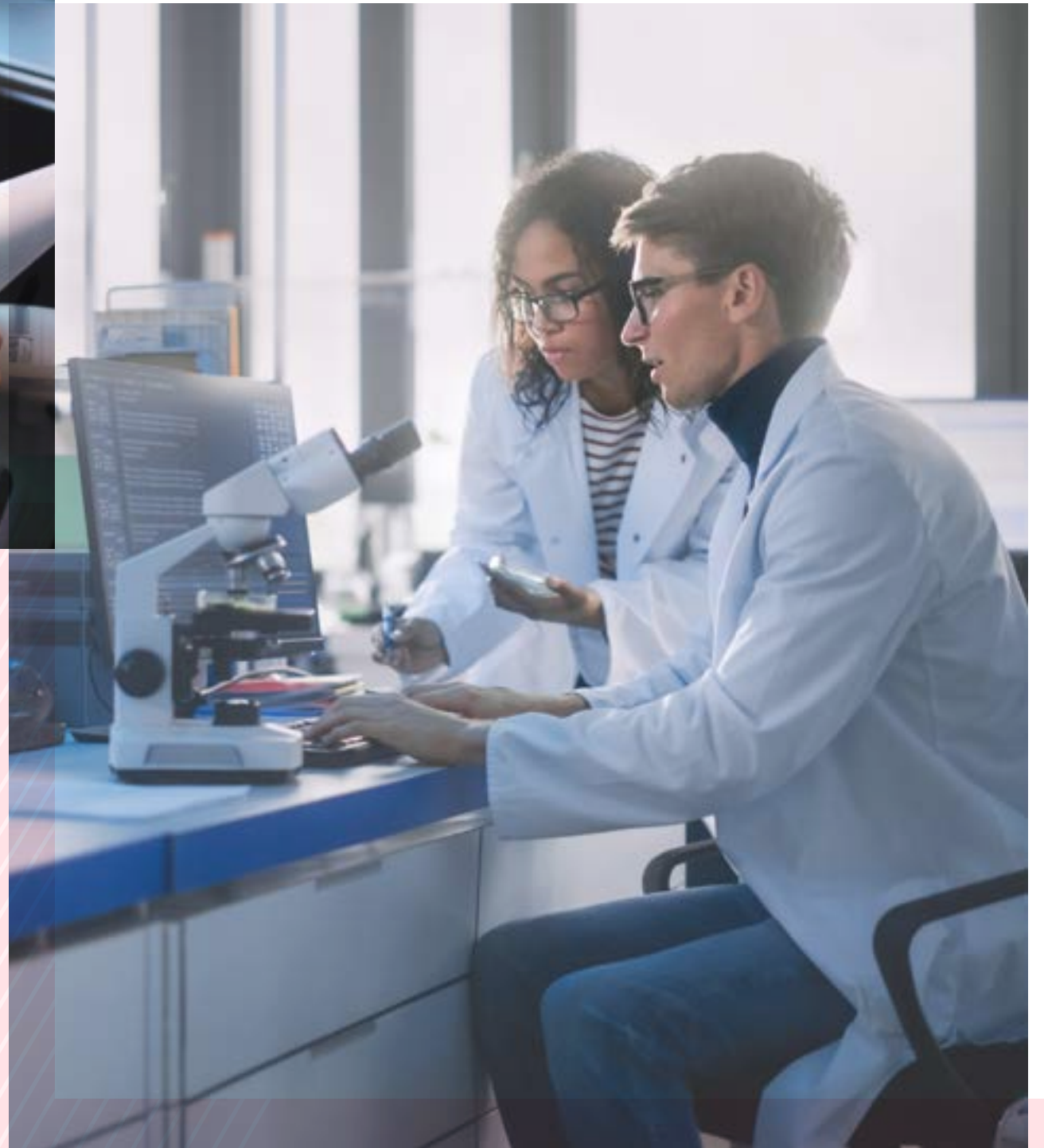
FACILITIES AND RESOURCES 9.

A WORLD OF OPPORTUNITIES 10.

COURSES 11.

CONTACT US 12.

MEDICINE



At Manchester

If you're considering undertaking a postgraduate course, either on-campus or through online and blended learning, you'll find the perfect environment at The University of Manchester.

Our postgraduate courses draw upon our world-leading research and our strong links to global industry.

Whether you're looking to gain specialist skills with a master's or embark on a career in research, you'll quickly develop your capabilities and gain exposure to experiences that will set you apart.

WHY MANCHESTER?

Become a specialist

Specialist courses cover occupational, aesthetic and musculoskeletal medicine, paediatric anaesthesia, and medical education. You'll learn from educators based in local hospitals and specialist NHS services.

1st

The University of Manchester is 1st in the UK and 2nd globally for social and environmental impact.

THE University Impact Rankings 2025

Top city

Manchester is the highest ranking UK city to live in.

The Economist's Global Liveability Index, 2025

25 Nobel Prize winners

Join a community of global innovators and pioneers whose achievements have helped shape the modern world – a university where 25 Nobel Prize winners have worked or studied.

Top researchers

Manchester is home to both one of the largest medical schools in the UK and top researchers working at the forefront of the medical field.

1st

We are the most targeted university by the UK's top 100 recruiters.

The Graduate Market 2026

Courses for professionals

We offer postgraduate taught courses covering a wide range of disciplines for students from both medical and non-medical backgrounds.

LIFE- CHANGING RESEARCH



Our researchers contribute to society and improve healthcare and education through innovative discoveries and new knowledge.

By choosing Manchester, you will join a university at the forefront of research discoveries, but what does that mean for you?

- > You'll study in an academic environment that helps brilliant thinkers turn inspiration into reality, encouraging enterprise, experimentation, and creative thinking.
- > Courses are informed by the latest breakthroughs.
- > Learn from world-leading minds with close links to industry and a commitment to making a difference.



BOOSTING THE EFFECTIVENESS OF BREAST CANCER TREATMENT

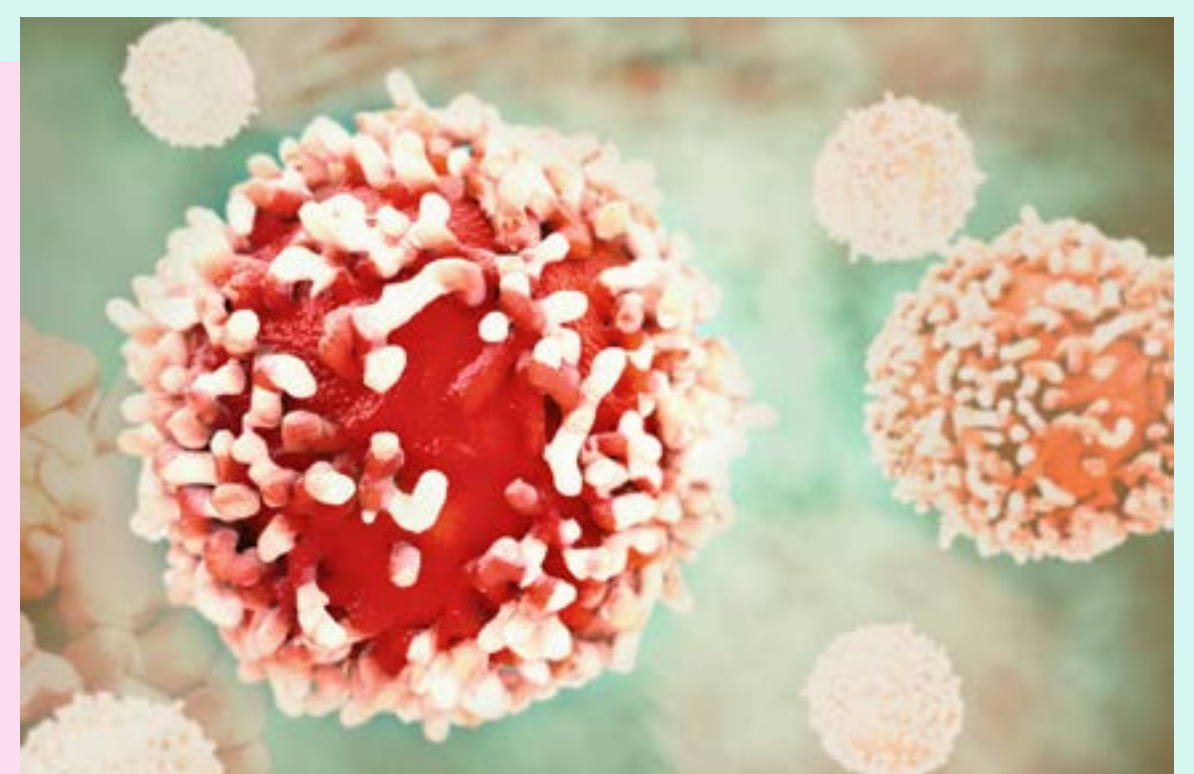
Scientists at The University of Manchester discovered that targeting the less common RAC1B protein variant could be a potential way of improving treatment for breast cancer.

“Developing cancer stem cell treatments to target tumours at their root has been a research aim for more than 20 years, but until now has proven elusive.

For the first time, our research has shown that without RAC1B, breast cancer stem cells can't form tumours and become more vulnerable to chemotherapy, making the treatment even more effective. Positively, RAC1B isn't needed for healthy cells, so targeting RAC1B with new cancer treatments is unlikely to have severe side effects.

“We hope that further research will help translate these findings into targeted therapies for breast cancer patients.”

DR AHMET UCAR, BREAST CANCER NOW RESEARCH FELLOW AT THE UNIVERSITY OF MANCHESTER.



MEDICAL RESEARCH

As a faculty in the largest single-site university in the UK, our size and scale enable our research to cover a diverse set of disciplines.

The School of Medical Sciences has six research divisions, all focusing on a different specialism.

Explore our research:

- > [Division of Cancer Sciences](#)
- > [Division of Cardiovascular Sciences](#)
- > [Division of Dentistry](#)
- > [Division of Developmental Biology and Medicine](#)
- > [Division of Diabetes, Endocrinology and Gastroenterology](#)
- > [Division of Medical Education](#)



ADVANCES IN CARDIOVASCULAR SCIENCES

Researchers have developed and validated three new methods to avoid the need for inpatient investigation of chest pain, a common reason for emergency hospital admission. These methods have been used by more than 30,000 patients, and have led to reduced hospital admissions and savings of approximately £2,000 per patient.

The research has supported the rollout of high-sensitivity cardiac troponin testing in England, Wales and the United States.

[READ MORE HERE](#)

PREVENTING STILLBIRTH AND IMPROVING THE QUALITY OF CARE

Based upon University of Manchester research, the Saving Babies Lives Care Bundle, a quality improvement programme to identify and manage risk factors for stillbirth, has been implemented nationally.

Implementation reduced stillbirth by 20% in all 19 NHS Trust early adopter units, saving 161 stillbirths in these units. In 2019/20, implementation of the care bundle was incorporated into the standard NHS contract.

Studies describing women's experiences after stillbirth and in pregnancies after loss have underpinned regional, national and international guidelines for the care of women who experience a stillbirth. Public awareness campaigns based upon our research including #sleeponside and #movementsmatter have reached over 2.5 million women in the UK and internationally.

[READ MORE HERE](#)



WHAT IS IT LIKE STUDYING A POSTGRAD MEDICINE COURSE AT MANCHESTER?



SHREEYA SHARMA
MSc Tissue Engineering
for Regenerative Medicine

"The unit on Laboratory Skills was the most fascinating one for me as we got to work in the fancy, high-tech labs at the University. This short unit focused on developing our expertise in essential laboratory techniques like histological staining, immunofluorescence, immunohistochemistry, and PCR, which are required to be mastered by students to function independently in laboratories."

"The thing that makes the course stand out for me is the wide breadth of professionals on the course. There are physicians who specialise in everything from cancer to haematology alongside nurses who dedicate themselves to caring for children. You can learn so much from each person and their area of expertise and there are specially designed workshops to do just that."

MEKONNEN GIRMA
MSc Genomic Medicine

**READ MORE
FROM OUR
POSTGRAD
MEDICINE
STUDENTS**





FACILITIES AND RESOURCES

As we're the UK's biggest medical school and cover a large geographical area, our students have access to a wide range of excellent learning and training facilities.

We also have partnerships with leading university teaching hospitals, which may have facilities including clinical skills laboratories, seminar rooms with teleconferencing, and networking facilities.

We encourage interaction between our master's and PhD students and you may also be invited to attend a range of seminars with external speakers.

The Stopford building has a medical library and various social spaces, including a postgraduate hub available only to postgraduate students. You will also have access to facilities across the wider [University campus](#).



A WORLD OF OPPORTUNITIES

Roles and recruiters

As a Manchester graduate, your skills will set you apart and prepare you for an exciting future in the medical sector. Here's just a small taste of some of the roles our alumni carry out:

- > Doctor in the NHS
- > Clinical Trials Clerk at the Christie Hospital
- > Oncologist in the NHS
- > Lab Analyst at LGC
- > PhD Researcher at Rutgers University, New Jersey
- > Research Technician at The University of Manchester
- > Genetic Technologist in the NHS
- > Medical Writer at Nucleus Global
- > Technical Sales & Business Development Specialist at Elucigene Diagnostics
- > Trainee Nuclear Medicine Technologist in the NHS
- > Radiopharmacy Production Technologist at Cardiff University
- > Assistant Professor of Virology at King Saud University
- > Senior Medical Lab Scientist at Rivers State Ministry of Health
- > Assistant Teacher at Central University of Ecuador
- > Scientist (Next Generation Sequencing) at QIAGEN
- > Industrial Hygienist at BT Chemicals
- > Occupational Physician and Health Team Leader at BP
- > Surgical Registrar in the NHS
- > Physician Associate in the NHS

COURSES

We offer master's courses that are designed to help you prepare for PhD study and a career in medical research, giving you a head start if you want to become a research scientist.

HEALTHCARE SCIENCE COURSES

- > [Clinical Biochemistry \(MSc\)](#)
- > [Clinical Immunology \(MSc\)](#)
- > [Medical and Molecular Virology \(MSc\)](#)
- > [Medical Microbiology \(MSc\)](#)
- > [Medical Physics in Cancer Radiation Therapy \(MSc\)](#)
- > [Molecular Pathology of Cancer \(MSc\)](#)

SPECIALIST COURSES

- > [Neuroimaging for Clinical & Cognitive Neuroscience \(MSc\)](#)
- > [Occupational Hygiene MSc](#)
- > [Occupational Medicine \(MSc\)](#)
- > [Physician Associate Studies \(MSc\)](#)
- > [Skin Ageing and Aesthetic Medicine \(MSc - blended learning\)](#)
- > [Master of Public Health \(MPH\) \[online\]](#)
- > [Master of Public Health \(MPH\) \[on campus\]](#)
- > [Transformative Oncology \(MSc/PGDip/PGCert\)](#)



MEDICAL RESEARCH COURSES

- > [Cancer Research and Molecular Biomedicine \(MSc\)](#)
- > [Cardiovascular Health and Disease \(Research\) \(MSc\)](#)
- > [Genomic Medicine \(MSc\)](#)
- > [Oncology research \(MSc\)](#)
- > [Precision Medicine \(MSc\)](#)
- > [Public Health \(MRes\)](#)
- > [Reproduction and Pregnancy \(Research\) \(MSc\)](#)
- > [Tissue Engineering for Regenerative Medicine \(MSc\)](#)

DATA AND COMMUNICATION COURSES

- > [Applied AI for Medical Imaging \(MSc\)](#)
- > [Health Data Science \(MSc\)](#)
- > [Health Informatics \(MSc\)](#)
- > [History of Science, Technology and Medicine \(MA\) \[jointly awarded by UCL and Manchester\]](#)
- > [Medical and Health Education \(PGCert\)](#)
- > [Science and Health Communication \(MSc\)](#)

PHD WITH INTEGRATED MASTER'S

If you're planning to undertake a PhD after this master's, our Integrated PhD programme will enable you to combine this postgraduate taught course with a related PhD project. [Learn more about the Integrated PhD programme.](#)

CONTINUING PROFESSIONAL DEVELOPMENT

CPD course units and workshops draw on the expertise of some of the UK's most respected academics, clinicians and health professionals. [Medicine CPD at Manchester.](#)



CONTACT US

Medicine Admissions Team
The University of Manchester

+44 (0)161 529 4577

pgtaught.medicine@manchester.ac.uk

Connect with us:



DISCLAIMER

This prospectus was produced in August 2022 for the purpose of the 2023 intake. It has therefore been produced in advance of course starting dates. As such, for a number of reasons, course information, including, for example, details of course content, unit availability and/or published term dates, may be amended either prior to or after you apply for a place on a course.

All information relating to tuition fees and funding is correct at the time of publication. However, this may change for a number of reasons, including if there is a change to government policy.