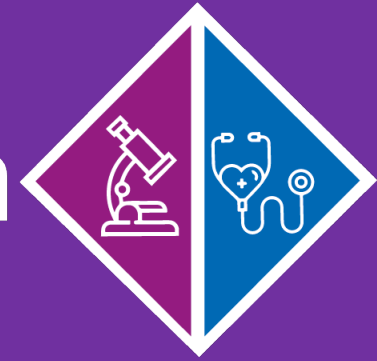


# Translational Research

## Manchester 2023



### Session One

Translational Research Funding & Generating Impact from Translational Research

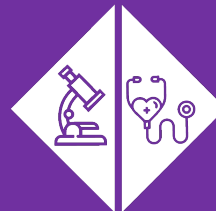
**Chair:**  
Dr Laura Breen



Scan for full  
programme



@Translation\_Mcr



#TranslationMCR23

MANCHESTER  
1824

The University of Manchester



# Translational Research

► Manchester 2023



| SESSION 1     | TRANSLATIONAL RESEARCH FUNDING<br>& GENERATING IMPACT FROM TRANSLATIONAL RESEARCH<br>Chair: Laura Breen, Research Development & Impact Manager |
|---------------|--|
| 10:45 - 10:50 | <b><i>All you need to know about Research Impact (in 5 minutes)</i></b><br>Emma Hatton, Impact Officer   |
| 10:50 - 11:00 | <b><i>Upstream, downstream and everything in between</i></b><br>Prof Jo Dumville, Professor of Applied Health Research                         |
| 11:00 - 11:10 | <b><i>Pathways to Translational Funding</i></b><br>Dr Sam Butterworth, Senior Lecturer of Medicinal Chemistry                                  |
| 11:10 - 11:15 | Questions & Answers  |

# All you need to know about Research Impact... (in 5 minutes)

Emma Hatton, Research Impact Officer FBMH



1. What is research impact?



# Research Impact is

the **change** that has resulted from your research,  
in the world (outside of academia)

Research Impact = **benefit**

Common categories of impact are:



**Health and  
wellbeing**

**Policy**

**Commercial/  
economic**

**Environment**

**Awareness  
and  
understanding**

**Attitudes and  
behaviours**

2. What isn't research impact?



# Not to be confused with

- Academic impacts   
e.g. publications/outputs/invited keynotes and  
research funding
- Pathways to Impact   
i.e. activities that *may* lead to research impact  
but are not impact in their own right  
e.g. public engagement events  
patents  
media coverage



3. Why is research impact important?



It's important:

- Social responsibility
- Personal recognition
- Career progression
- Enjoyable, rewarding
- Learn new skills
- Funders expect it
- University reputation
- Brings in funding, including from REF

4. What support is there for research impact?



# FBMH's Research Impact Officers are:



**Deborah Bentley**

Biological Sciences



**Emma Hatton**

Medical Sciences



**Denise Davidson**

Health Sciences

# We can signpost you to wider support:

Business engagement services

Knowledge Exchange team



Policy@Manchester



Cultural institutions

the **Whitworth**



**VOCAL**

**Translation**Manchester



5. How else can the Research Impact team help?



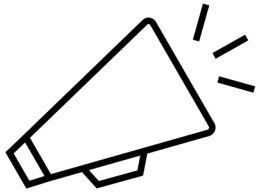
# We can help you to:

- Develop an impact strategy
- Embed impact planning into funding proposals
- Monitor, measure and evidence your research impact (do this as you go)
- Communicate your impact (first steps-Pure)
- Complete narrative CVs

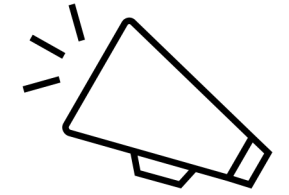
[FBMH impact pages](#)

[Grant Repository](#)

Talk to us!



# Five module Research Impact training suite launched



- 1. Introduction to research impact*
- 2. Planning for impact and incorporating impact within grant applications*
- 3. Communicating your research to a variety of audiences*
- 4. Working with stakeholders to achieve research impact*
- 5. Evidencing research impact*

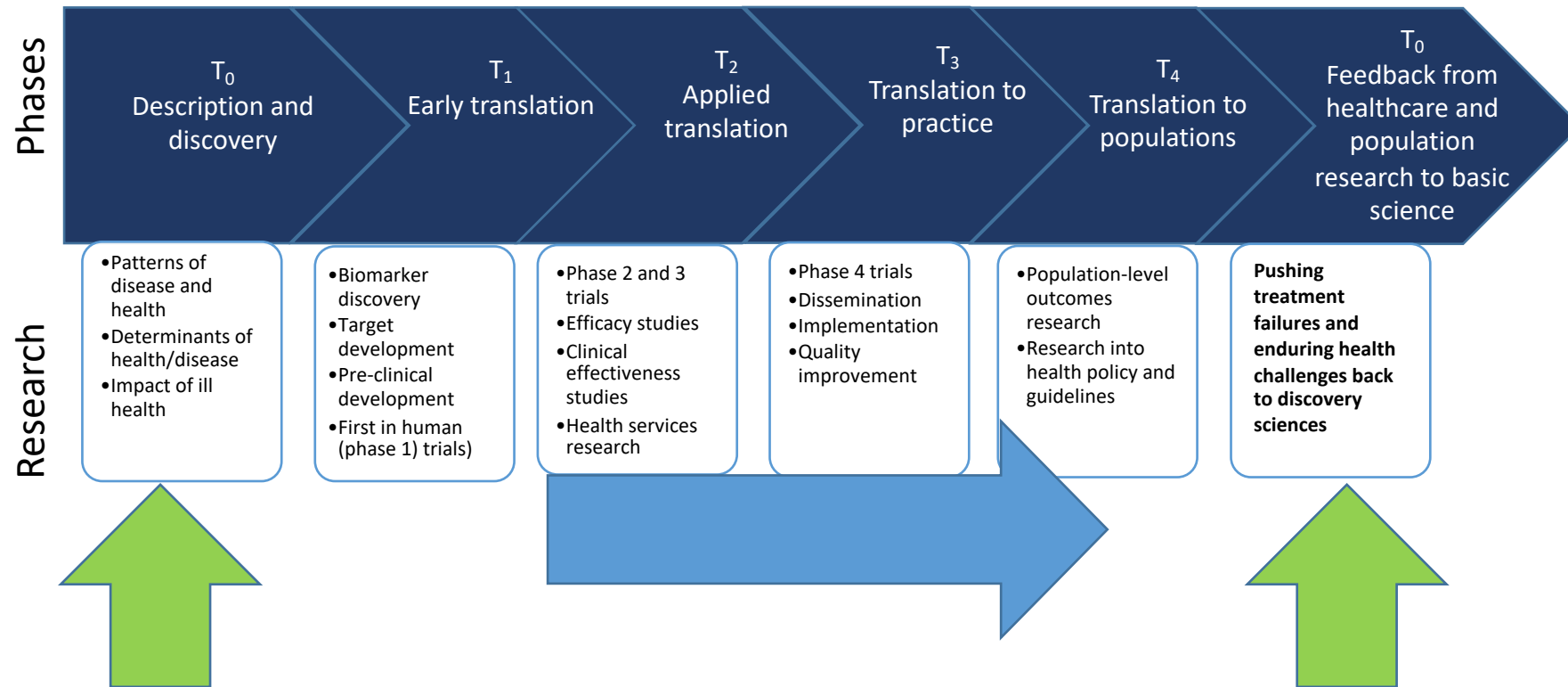
**Book now** for module 1 'Introduction to research impact'  
(RESIMP001) 16<sup>th</sup> October 2023 11am-1pm





# Upstream, downstream and everywhere in between

Jo Dumville  
School of Health Sciences  
Professor of Applied Health  
Research



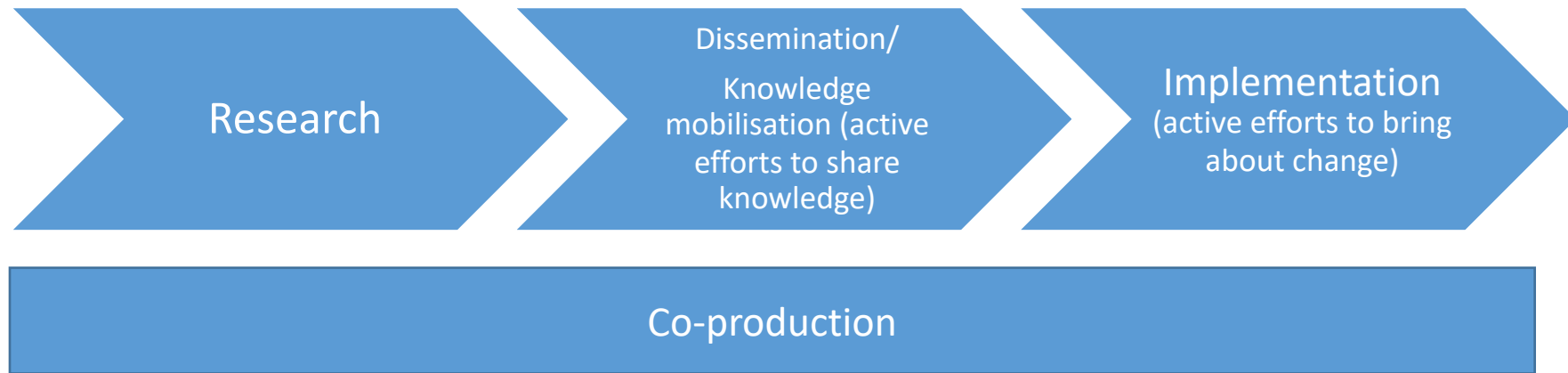


- How common are different conditions?
- What is the impact of different conditions on individuals, health care systems and society?
- What are priority areas for research in health and care from the perspectives of multiple stakeholders
- If things do not work as intended, why not?



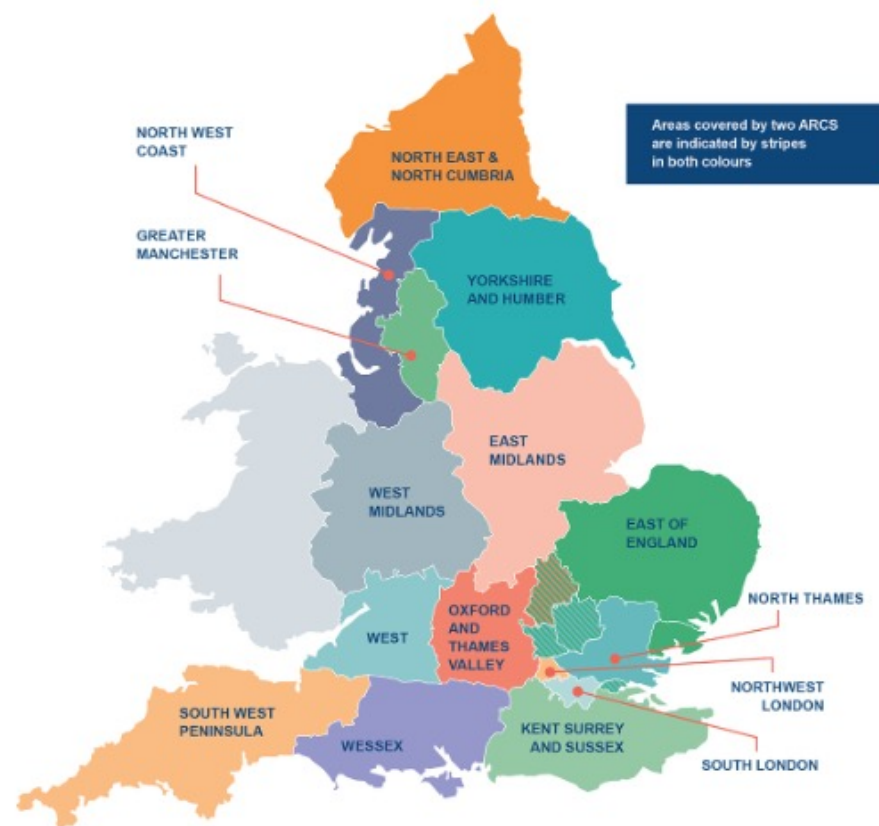
- Does [***innovation X***] cause [***Health or care outcome Y***] to (*including in real world use*)?
- What is known about undesirable effects?
- Do innovations offer value for money?
- How wide are health inequalities e.g., in risks to health and wellbeing and access to care and how can we reduce these?
- **What are the most effective ways of implementing new practices?**

# From research to impact



## NIHR Applied research collaborations

✓





Economic sustainability



Digital health



Healthy ageing



Organising care



Mental health

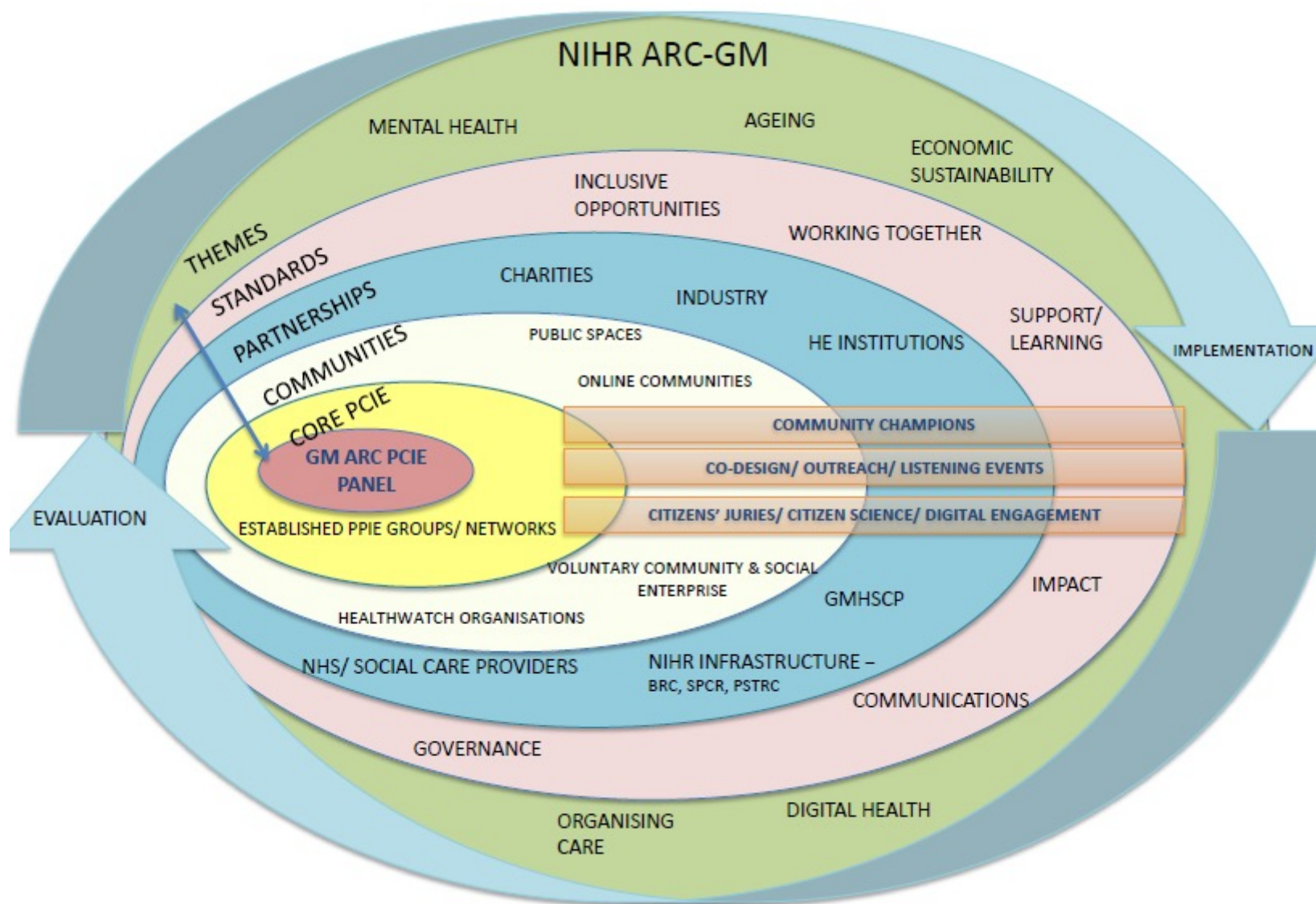


Implementation  
science



Evaluation





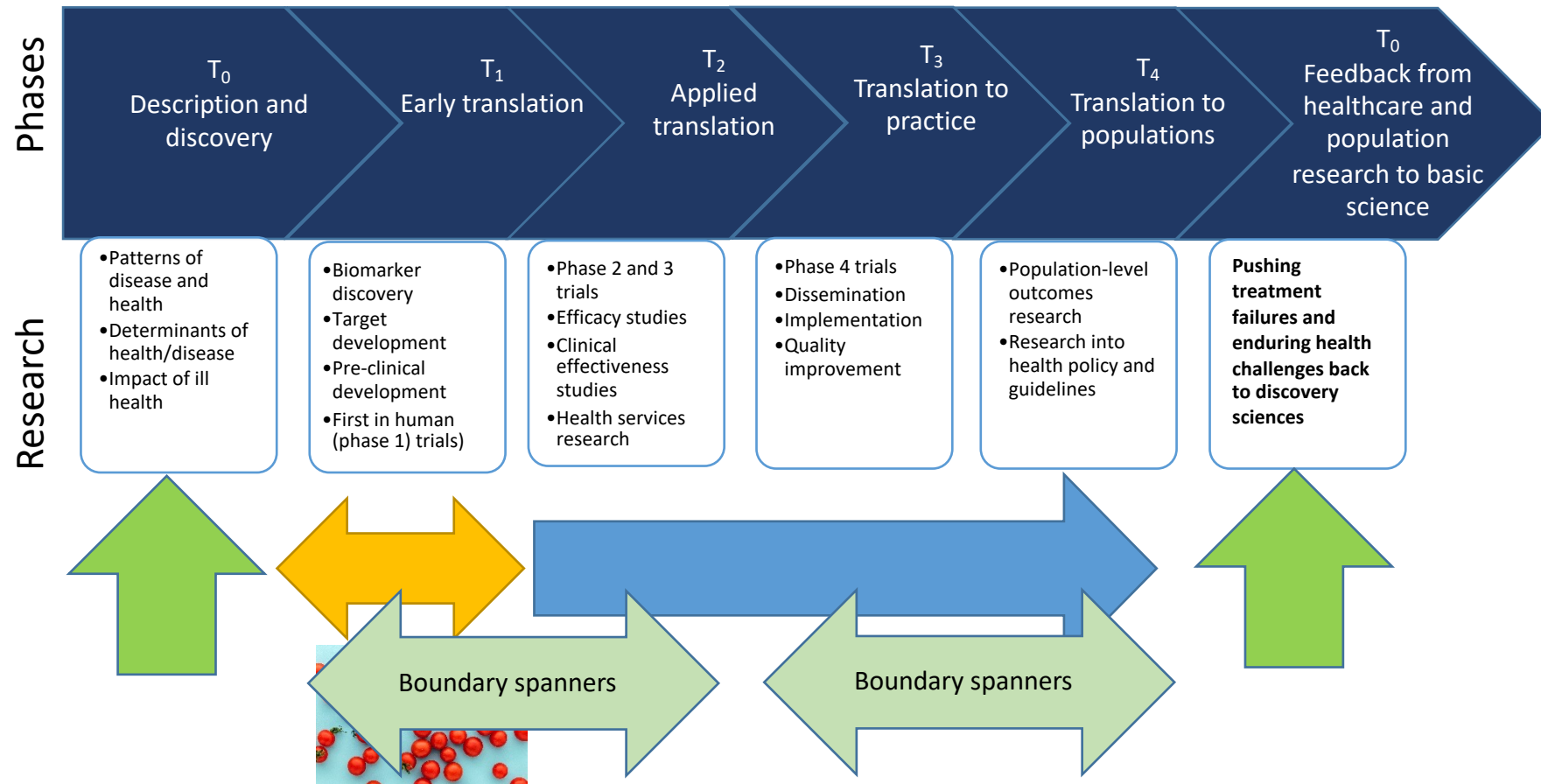
# examples from ARC-GM



- Findings from Citizens' Juries on data sharing in a pandemic were extensively cited in the 'Better, Broader, Safer: Using Health Data for Research and Analysis' commissioned by DHSC to sit alongside and inform the NHS Data Strategy.
- Findings from co-produced research are being implemented into practice; exemplars include the FaLls EXercise (FLEXI) Implementation study.
- Range of responsive research undertaken during the COVID-19 pandemic to provide relevant and actionable research to support decision making.

<https://arc-gm.nihr.ac.uk/media/Resources/ARC/The%20story%20so%20far/ARC-GM%20The%20story%20so%20far%20-%20FINAL.pdf>





# Thank you

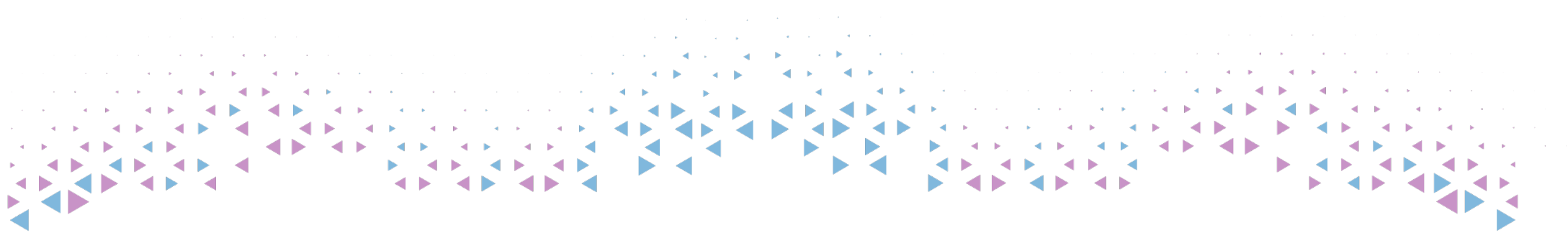
<https://arc-gm.nihr.ac.uk/>

**The Emergence of Translational Epidemiology: From Scientific Discovery to Population Health Impact.** Khoury MJ, Gwinn, Ioannidis JPA. American Journal of Epidemiology. DOI: 10.1093/aje/kwq211

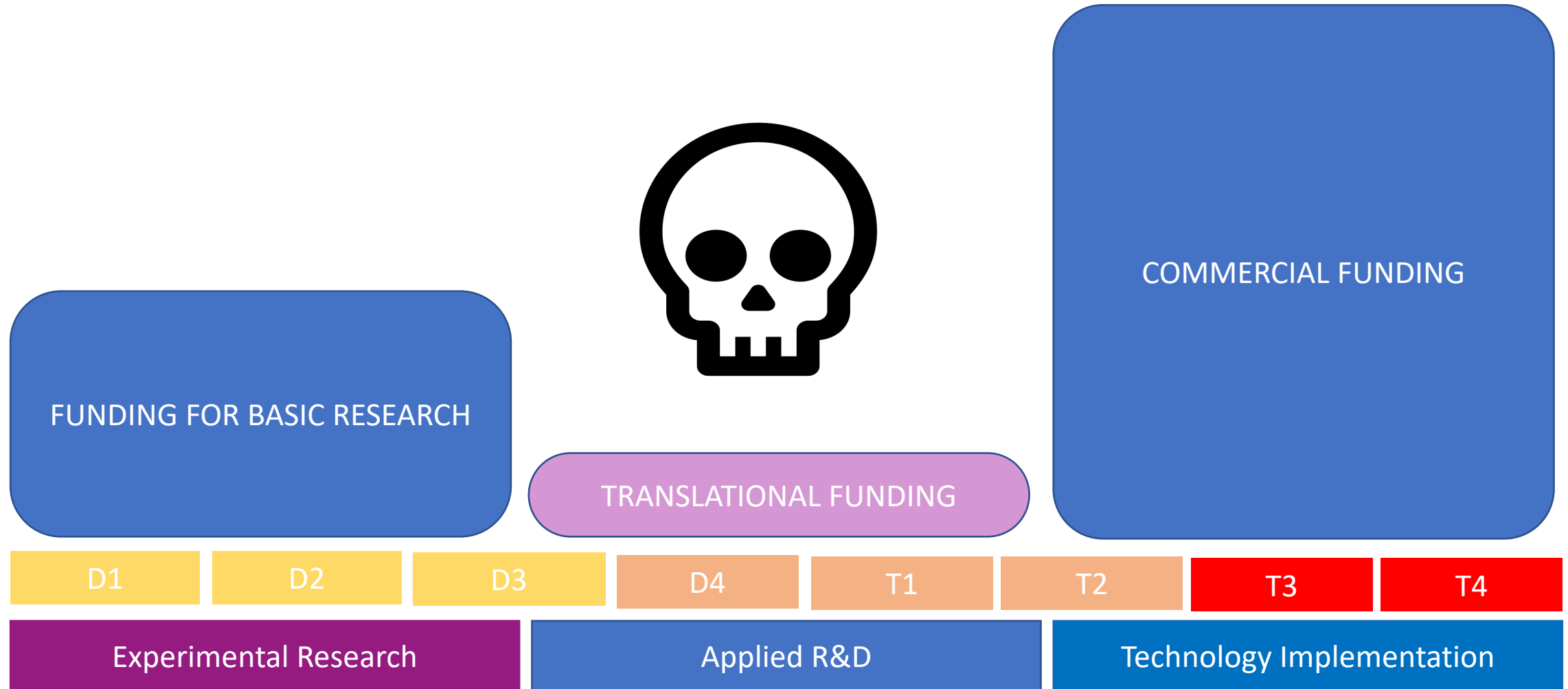


# Pathways to Translational Funding

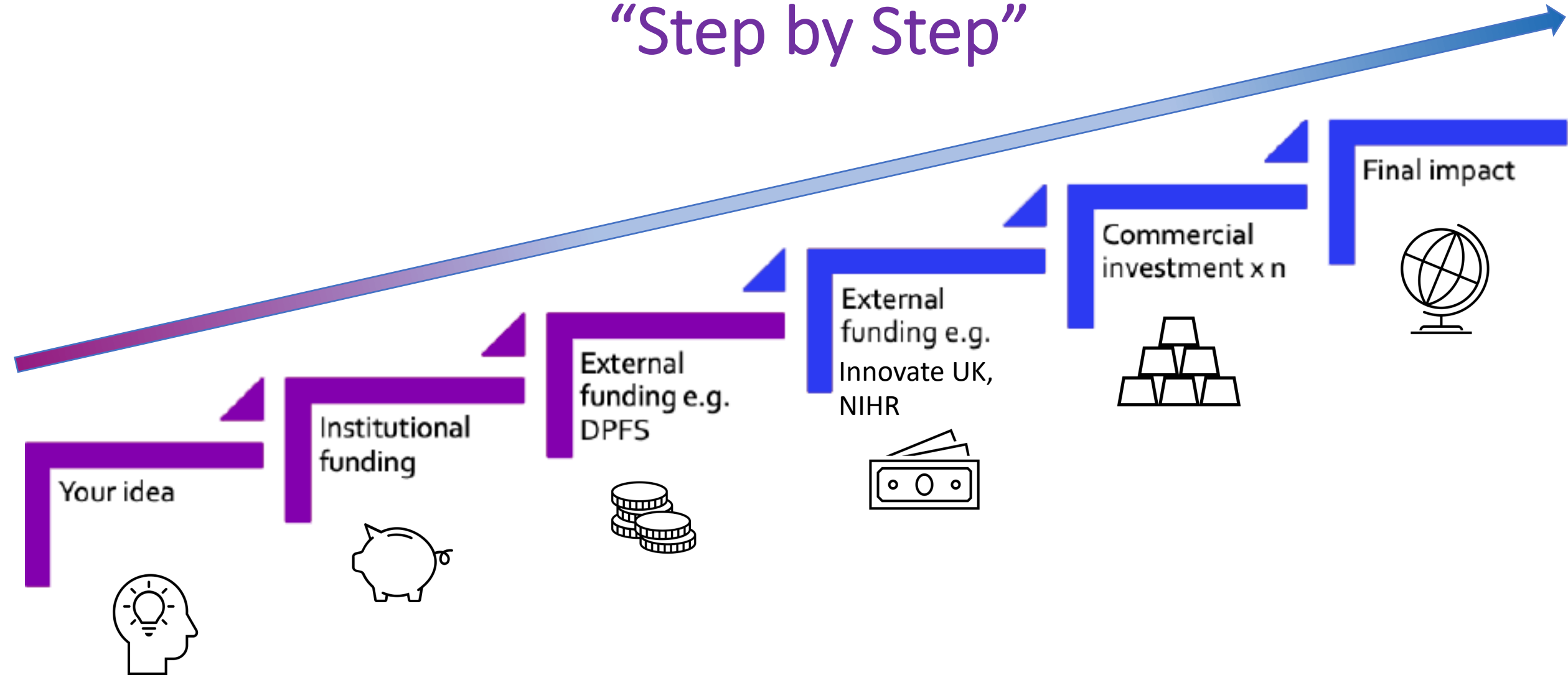
Dr Sam Butterworth  
Senior Lecturer of Medicinal Chemistry



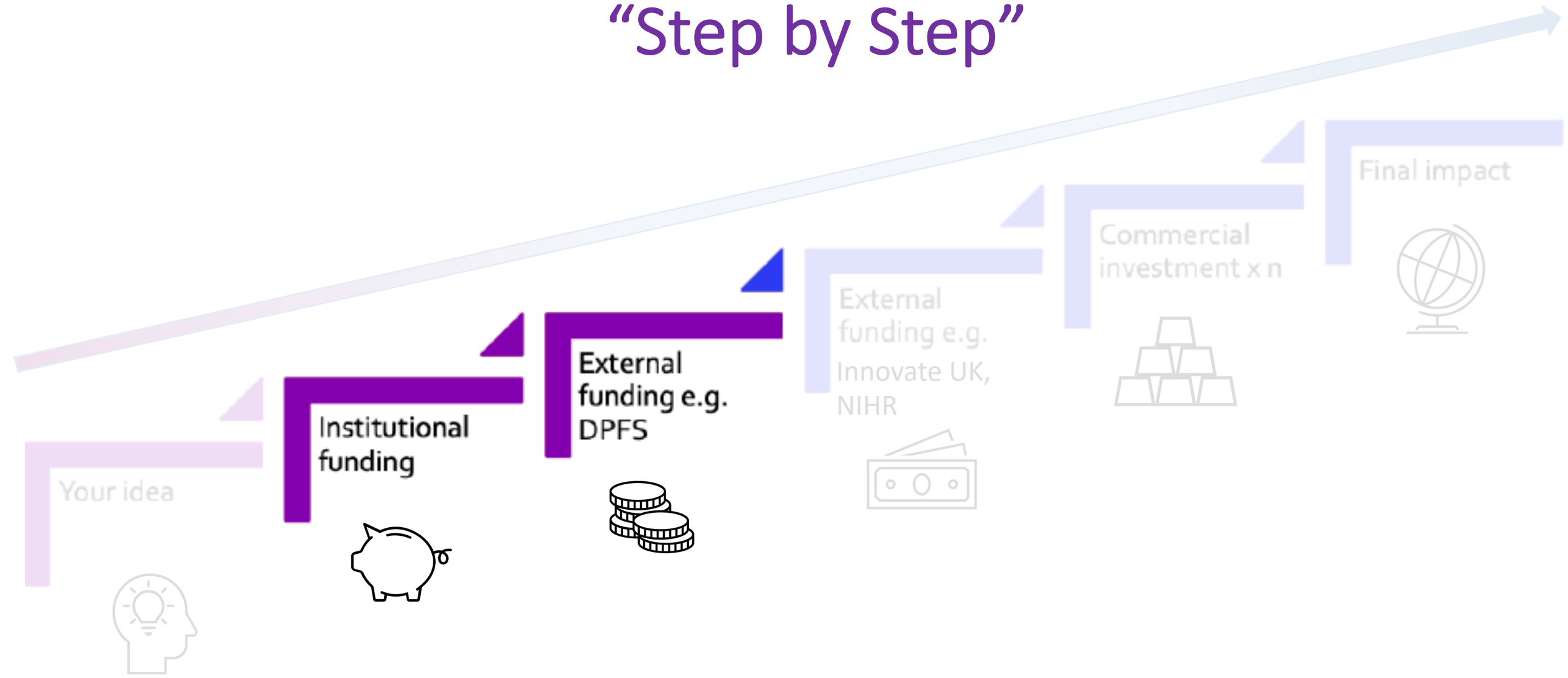
# Translational Funding “Valley of Death”



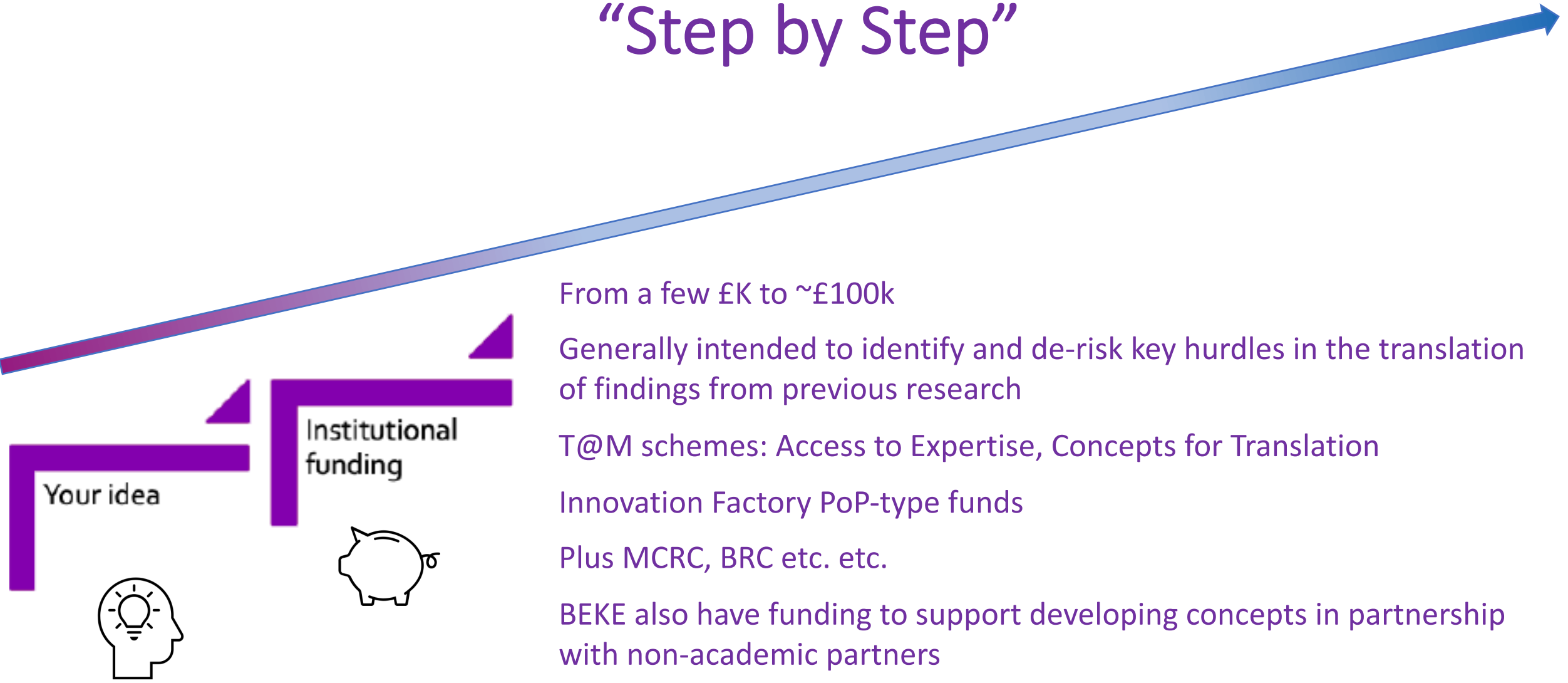
# Funding Translational Research “Step by Step”



# Funding Translational Research “Step by Step”

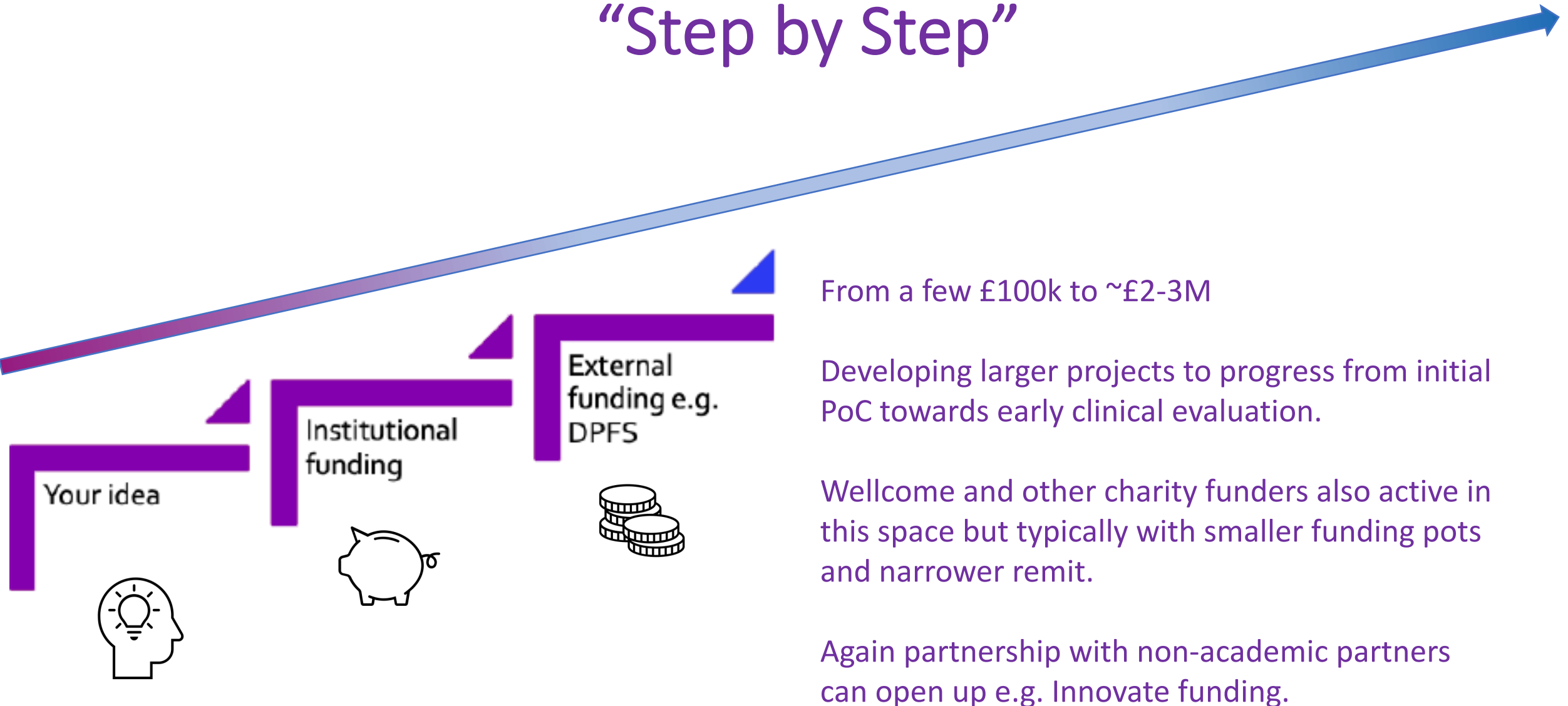


# Funding Translational Research “Step by Step”



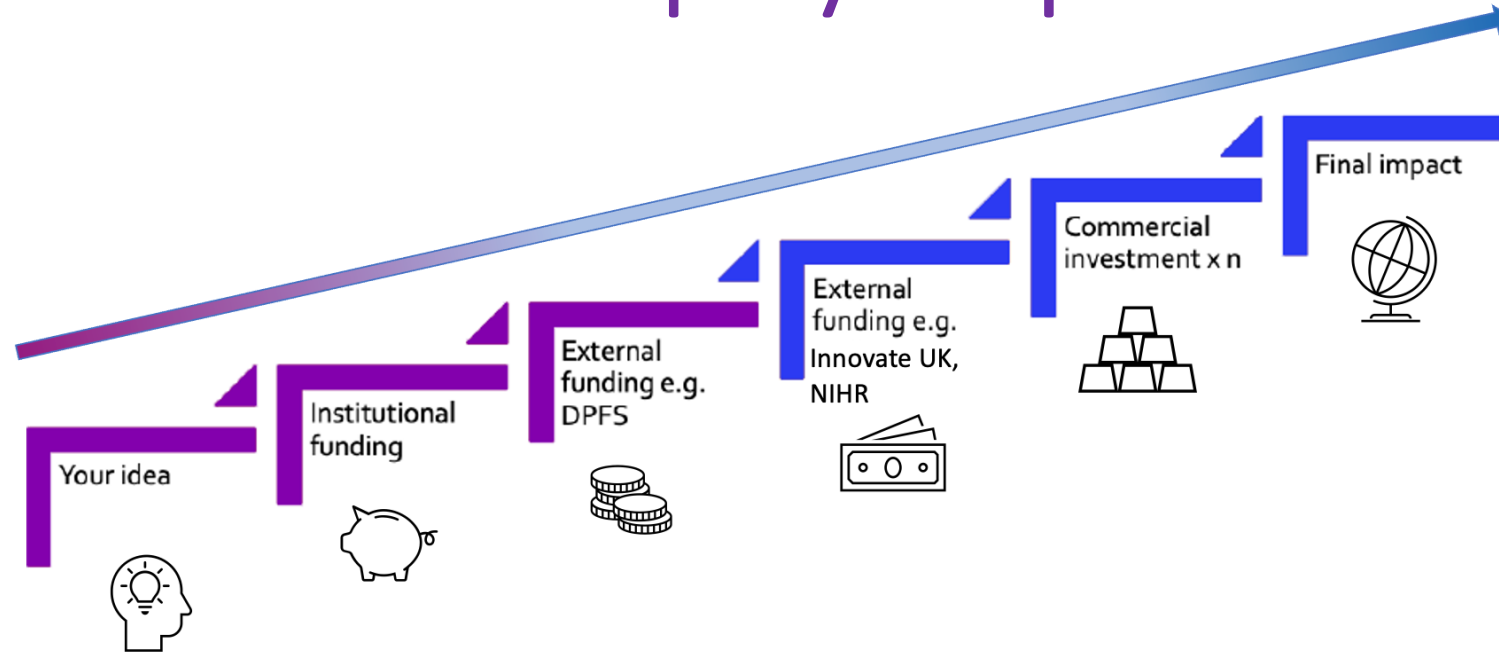
**Already need to be thinking about unmet need, competition etc.**

# Funding Translational Research “Step by Step”





# Funding Translational Research “Step by Step”

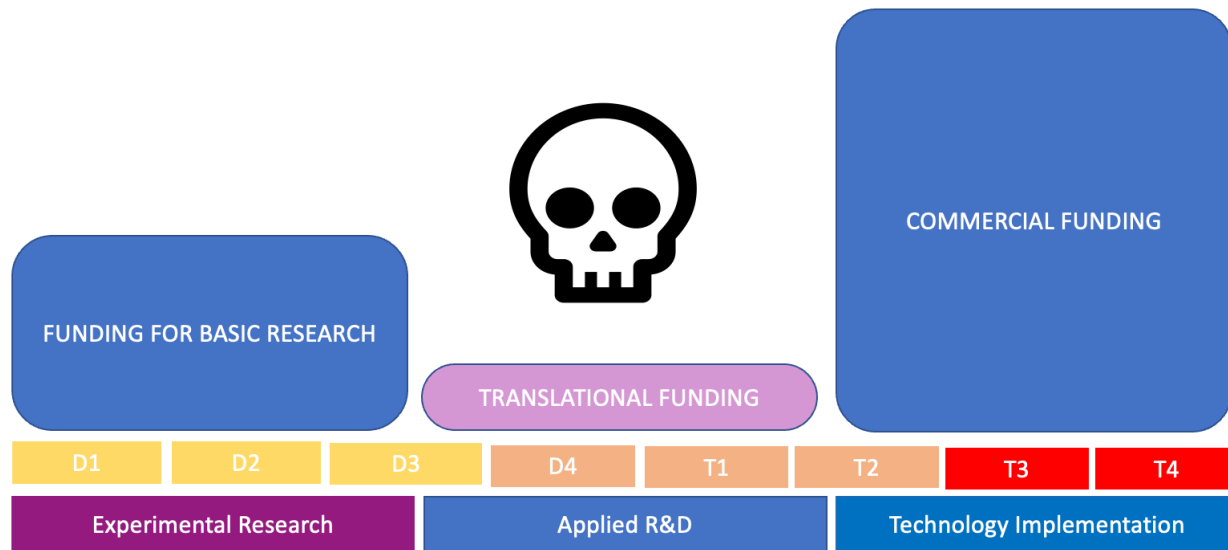


The ‘translational pipeline’ will look the same for every project, however making progress typically comes down to identifying the key risks in projects and addressing these.

This requires addressing both language barriers and a change in thinking between basic and translational research.

The expertise needed to progress may not be available in academia.

# Translational Funding “Valley of Death”



Part of the challenge in crossing the valley of death is actually knowing what is required;

Often expect to see truly comparative data vs competition or established approaches (standard of care)

Is there a credible team to deliver the project – one of the drivers of VC preference for platforms vs single projects

Certain research areas popular with funders at certain times

Funders like ‘disruptive technologies’ but market projections are often based on current state