

MANCHESTER  
1824

The University of Manchester

POSTGRADUATE  
CERTIFICATE IN  
EDUCATION



## Where are they now?

Many of our graduates choose to remain in Manchester working in local schools whilst others travel further afield including to international destinations.



### BECKY WILLIAMS

Becky studied her Biosciences degree and PhD at Manchester. Inspired by sharing her research with schools and the public, she returned to the University for her PGCE. She is now Head of General Science at The Kings School in Macclesfield.

*"My enthusiasm for science was essential in achieving a promotion early in my career to Head of General Science and I love the new challenges of having this extra responsibility. However, it is the pastoral side of teaching that I enjoy the most; helping students navigate the ups and downs of life is difficult, but so rewarding."*

Read Becky's story:  
[uom.link/pgce-becky24](https://uom.link/pgce-becky24)



### KURTIS JOHNSON

Kurtis completed a PGCE in Secondary Science (Biology) in 2022. Prior to the PGCE at Manchester Curtis was finishing off a master's degree in Biochemistry and working as a support worker to children and adults with learning disabilities. Curtis is now teaching GCSE Biology to all of Year 10 and most of Year 11. Alongside this, he is a Year 10 tutor and project lead for three Year 12 project (EPQ) groups.

*"From my experience, Manchester's PGCE champions diversity and inclusion, and made me feel comfortable enough to be my authentic self, and use my lived experiences to my advantage."*

Read Kurtis's story:  
[uom.link/pgce-kurtis24](https://uom.link/pgce-kurtis24)



### ABIGAIL LANGTON

Abigail chose to become a teacher after finding her passion for working with children as a nanny. Looking for a career that would enable her to do this she studied PGCE Primary, graduating in 2019. She is now a primary teacher at Varna Community School where she teaches a Year 4 class and has the role of modern foreign languages lead.

*"It's the hardest job that I've ever done but I like to think that I am managing. I am now a much more organised person and more confident in making decisions and trusting my own 'teacher judgement'."*

Read Abigail's story  
[uom.link/pgce-abigail24](https://uom.link/pgce-abigail24)



### GAVIN WARKE

Gavin completed a PGCE in Modern Foreign Languages (Spanish) in 2015. He worked at an inner-city school in Manchester before changing school for promotion to Head of Department. He moved to Abu Dhabi then Dubai and is now Head of Languages at Amity International School with overall responsibility for the performance and development of the MFL curriculum.

*"I feel the holistic approach taken at Manchester for their PGCE students builds them to be outstanding student teachers, gaining the skills to go on and become outstanding graduate teachers."*

Read Gavin's story:  
[uom.link/pgce-gavin24](https://uom.link/pgce-gavin24)

## SOCIAL



[facebook.com/uomhums](https://facebook.com/uomhums)



[twitter.com/uomhums](https://twitter.com/uomhums)



[instagram.com/uomhums](https://instagram.com/uomhums)

## AMBASSADORS

Chat with our student ambassadors and ask any questions you have by scanning the QR code below or using this link:

[uom.link/pgce-chat](https://uom.link/pgce-chat)



## STUDENT BLOGS

The best way to find out about what studying with us is like. Scan the QR code below or use link:

[uom.link/pgce-blog](https://uom.link/pgce-blog)



# Contents

WELCOME TO MANCHESTER	04-05
FOLLOW IN THEIR FOOTSTEPS	06-07
TEACHER TRAINING AT MANCHESTER	08-09
YOUR FUTURE	10-11
PGCE PRIMARY	12-13
PGCE SECONDARY	14-15
BUSINESS AND ECONOMICS	16
MATHEMATICS	17
ENGLISH	18
GEOGRAPHY	19
HISTORY	20
MODERN LANGUAGES	22
SCIENCES	23
SCHOOL DIRECT	24-25
HOW TO APPLY	26-27
PLAN YOUR FINANCES	28
ACCOMMODATION	29
LET'S TALK	30-31

Here at Manchester, we're proud to do things differently. At our university, ideas become actions – and those actions change lives.

We're a truly international institution, welcoming thousands of people from across the world to join our community. We enjoy a global reputation for pioneering research

and innovation, which connects us with people and organisations worldwide.

Choose Manchester and you'll experience an education and environment that will set you on a path to become a global citizen and make your mark on the world.



#### **Top university**

6th in UK, 9th in Europe,  
28th best university  
in the world

(QS World University Rankings 2023)



#### **Most targeted**

The most targeted  
UK university by top  
graduate employers

(Higher Fliers Report 2022)



#### **Impact**

One of the world's leading  
institutions for action on  
sustainable development

(Times Higher Education University  
Impact Rankings 2022)



#### **Global**

Over 40,000 students  
from over 170 countries



#### **Research power**

5th in the UK for  
research power

(Research Excellence  
Framework 2021)

# Welcome to

# Manchester



# Follow in their footsteps

Join a community of global innovators and pioneers whose achievements have helped shape the modern world – a place where 25 Nobel Prize winners have worked or studied.

You'll study in an academic environment that helps brilliant thinkers turn inspiration into reality, encouraging enterprise, experimentation and creative thinking.



Andre Geim and Kostya Novoselov are awarded the Nobel Prize in Physics for their isolation of graphene's potentially world-changing properties.

## HERE ARE A FEW HIGHLIGHTS FROM OUR HISTORY

**1904**

**Catherine Chisholm** becomes the first woman to graduate in Medicine from Manchester Medical School. She helped set up the Manchester Hospital for Babies.

**1906**

**Christabel Pankhurst**, who would become a leading figure in the suffragette movement, becomes the first woman to graduate from the university in Law.

**1915**

**William Bragg**, while still a research student, becomes the youngest ever winner of the Nobel Prize in Physics.

**1917**

**Ernest Rutherford** becomes the first person to create an artificial nuclear reaction in a laboratory, ushering in a new era of nuclear research.

**1945**

**Ellen Wilkinson** becomes Britain's first female Minister of Education. Born in Manchester, Ellen won a scholarship to study at the university and entered politics after graduating.

**1948**

**Freddie Williams** and **Tom Kilburn** successfully run a program on 'The Baby', the world's first digital stored-program computer.

**1948**

**Alan Turing**, one of the WWII codebreakers, completes pioneering work in machine intelligence at Manchester, paving the way for artificial intelligence.

**1957**

**Bernard Lovell** completes the Lovell Telescope, the world's largest steerable radio telescope at the time, at Jodrell Bank.

**1974**

**Jean McFarlane\*** is appointed as the first Professor of Nursing in the UK by the university and goes on to establish the country's first nursing degree.

**1979**

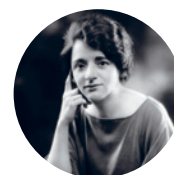
**Arthur Lewis**, Britain's first black professor, becomes the first black winner of a Nobel Prize in Economic Sciences.\*\*

**1993**

**Michael Smith**, a Manchester PhD graduate, receives the Nobel Prize in Chemistry for his work on DNA engineering.

**2010**

Manchester alumna **Dame Sally Davis** is appointed as the UK's first female Chief Medical Officer.



\*Permission to use reproduction material from the Royal College of Nursing \*\*Permission courtesy of Keystone/ Stringer/ Getty





# Teacher Education at Manchester

A PGCE at The University of Manchester is highly regarded, and not only in the UK. During the course, you will undertake high-quality school-based training in our committed school partnerships, combined with expert academic teaching in a collegial context at the university. Our teacher education curriculum is underpinned by the most up-to-date research on education, some of it being undertaken here in the prestigious Manchester Institute of Education.

We're committed to the education and training of teachers who are passionate about environmental and social justice and supporting them to enact this commitment in their teaching. This means, for example, that we work from anti-racist principles in our recruitment, in our partnerships with schools and colleges, in our teaching and in listening to our trainees, and that we aim to help trainee teachers become agents of positive change in education.



## **Bright future**

A PGCE from The University of Manchester will set you up for a bright future in teaching. Watch our video: [uom.link/pgce-animation](https://uom.link/pgce-animation)



## **Top ten**

Train at one of the top ten Education departments in the UK.

(QS World University Rankings by Subject 2023)



## **Ofsted outstanding**

Our PGCE programmes are rated as 'Outstanding' across the board by Ofsted.

(Ofsted Report 2018)



## **School Direct**

Opt for the School Direct route for Primary and a range of Secondary PGCE options. See page 25 for further details



## **200+ partners**

Benefit from our great connections with over 200 schools and colleges for your school-based training. Watch this video to find out more how you can benefit from our partners: [uom.link/pgce-partners](https://uom.link/pgce-partners)



# Your future

A PGCE will give you the training you need to teach the subject you love, and when you complete your course, you'll be recommended for qualified teaching status (QTS), which means you can teach in any state-maintained or special school across England and Wales.

We'll give you the support you need to prepare for a successful career in education through clear direction and advice when applying for teaching posts, and you'll also have access to the University's award-winning Careers Service.

## AT MANCHESTER YOU CAN

- **Make connections:** connect with inspirational alumni, academics, employers – and fellow postgraduates.
- **Become part of our community:** get involved in volunteering initiatives or communicate your passion for your subject via our public engagement programmes.
- **Shape your own future:** access support and training to help you gain the skills, knowledge and attributes that will stay with you for the rest of your life.

Find out more: [uom.link/pgp-careers24](https://uom.link/pgp-careers24)

## CAREER PROGRESSION

As a qualified teacher, you will undertake continuous professional development (CPD) throughout your career to maintain the latest subject knowledge and teaching techniques, and, if you wish, to help you progress into leadership and management positions. If you decide you would like to extend your studies and complete a master's in the future, our PGCE qualification can count for 60 of the 180 credits required for a master's.

Explore education master's courses: [uom.link/education-pg-masters24](https://uom.link/education-pg-masters24)



### **In demand**

Manchester PGCE graduates are sought out by schools and colleges across the region.  
[uom.link/pgce-careers](https://uom.link/pgce-careers)



### **Continuing professional development**

Manchester offers more than ten education-based master's courses to help you develop your career.



### **Attractive salary**

£28,000 a year is the minimum starting salary for early career teachers in England and Wales.

(Get Into Teaching 2023)





## PGCE Primary

Our PGCE primary curriculum incorporates the Department for Education's core content framework, training you to teach children across the 5-11 age range in all primary stage National Curriculum subjects.

Our course is a blend of university-based sessions and practical training in partner schools. On completion you will receive a postgraduate qualification and recommendation for qualified teacher status (QTS), enabling you to apply for primary teaching jobs.

At Manchester, you will:

- Spend a significant amount of time in schools developing practical teaching skills.
- Observe and teach classes under the guidance of an experienced primary teacher
- Get support from a mentor in lesson planning and marking and assessment skills.

Your university-based sessions will cover education theories, ideas and concepts, and will enhance your awareness of current educational issues, and your training in schools will teach you the application of these, along with key practical skills.

You will spend a significant amount of time studying the core subjects of English, mathematics and science, as well as religious education, physical education, history, geography, art, music, and design and technology.



Scan to watch our video or use this link:  
[uom.link/pgce-primary-video24](https://uom.link/pgce-primary-video24)



A School Direct option is available for this course – see page 25 for more details

## COURSE DESIGN

PGCE courses start in September and are ten months in duration which includes both school-based and university-based learning. You will spend more than 50% of your time on placement:

- eight weeks in the autumn term in either Key Stage 1 or Key Stage 2;
- eleven weeks in the summer term in either Key Stage 1 or Key Stage 2;
- two-week inclusion placement in either key stage;
- two-week placement in the Early Years Foundation Stage (EYFS);
- one-day placement in Key Stage 3.

When on placement, you will observe and teach classes under the guidance of an experienced primary teacher. You will also have a mentor to help you plan lessons, deal with assessment, and improve your teaching skills. Your remaining time will be spent at the University, for example in lectures and seminars. You will get time off from attending university and school placements over Christmas and Easter, but you should expect to spend some time in self-directed study during these breaks.



Scan to discover PGCE Primary or use this link:  
[uom.link/pgce-primary24](https://uom.link/pgce-primary24)

## ACADEMIC SPOTLIGHT

### Liz Birchinal

After extensive senior leadership experience at a large Manchester primary school, Liz joined the University in 2011 to train primary school teachers. She became co-programme director in 2015, alongside Dr Rebecca Phillips. Together they led the team through an Ofsted Inspection in 2018 where Manchester's Primary PGCE was rated 'outstanding' in all areas. Prior to that Liz has over 20 years' experience in teaching, both in the secondary and primary sector, graded outstanding on two occasions by Ofsted.

*"We train teachers in Greater Manchester with its high socio and economic deprivation with all the associated challenges that this brings. The reason why I get up every morning is so that we can recruit the best trainee teachers, so that they can be the best teachers."*

## STUDENT SPOTLIGHT

### MADHU'S PGCE

Madhu Jena was working in banking when she realised a career change would bring her greater job satisfaction.

### On my course

The course seemed to have the right balance between classroom sessions at the University and placements. The on-campus sessions not only provided us with fundamental background knowledge but also gave us an opportunity to make friends and learn from each other's experience. The placements, meanwhile, were very useful to put our learning into practice.

### On balancing the PGCE and my caring commitments

The University was extremely supportive of the fact that I have two children of my own in primary school. They took personal interest to ensure that I was always placed in schools close to home. This made a huge difference.

Read more about Madhu's experience:  
[uom.link/pgce-madhu](https://uom.link/pgce-madhu)







## PGCE Secondary

Our PGCE Secondary course will train you to become a professional, inclusive and reflective secondary school teacher, specialising in a particular subject. It will prepare you to teach the National Curriculum, GCSE and A-level. On completion of the course, you will receive a postgraduate qualification and recommendation for qualified teacher status (QTS) enabling you to apply for secondary teaching roles across the UK and beyond.

At Manchester, you will:

- Spend approximately two-thirds of your time in schools and colleges developing your practical teaching skills.
- Observe and teach classes under the guidance of an experienced teacher.
- Get support from a mentor in lesson planning and marking and assessment skills.

University-based sessions will enable you to reflect on teaching methods, which you can apply and develop during your sessions in schools and colleges. We will help you to transform your subject knowledge into teaching skills and to use educational theory to transform your practice. You will be given the opportunity to develop your own teaching style, to set personal targets, to demonstrate initiative and to evaluate your work in planning, teaching and assessing.



Scan to watch our video or use this link:  
[uom.link/pgce-secondary-video24](https://uom.link/pgce-secondary-video24)



A School Direct option is available for this course – See page 25 for further details

### COURSE DESIGN

PGCE courses start in September and are ten months in duration which includes both school-based and university-based learning. On our Secondary PGCE, around two-thirds of your time will be spent in secondary schools, academies and colleges on placements.

Your remaining time will be spent at the University, for example in lectures and seminars.

You will get time off from attending university and school placements over Christmas and Easter, but you should expect to spend some time in self-directed study during these breaks.



Scan to discover PGCE Secondary or use this link:  
[uom.link/pgce-secondary24](https://uom.link/pgce-secondary24)

### STUDENT SPOTLIGHT

#### ALED'S PGCE

Aled has chosen a PGCE Secondary Economics and Business Education at Manchester due to the University's reputation for employability and teaching standards. One of his highlights has been the ability to focus on areas of teaching he has been really passionate about, such as focusing on equality and diversity in the classroom and how an LGBTQ+ inclusive curriculum can be delivered.



*"I never really believed I would find a career where I would genuinely feel happy to walk into work in the morning. Through the PGCE I have been able to find a career that I truly love."*

Read more about Aled's experience: [uom.link/aleds-pgce](https://uom.link/aleds-pgce)

### ACADEMIC SPOTLIGHT

You'll be learning from experienced education professionals with a passion for making a difference in education and wider society.



#### Siân Morgan

Siân chose Manchester for both her first degree and PGCE and, after teaching in the local area, she returned to the University to train teachers. She's passionate

about reflecting the values of our city and University by running activities that help embed inclusivity and sustainability into the curriculum.

*"Each year we have an Inclusion and Inspiration Conference, where trainees from secondary and primary PGCEs join together for a fantastic event, with two keynote lectures and a wide variety of highly relevant and informative workshops focused on inclusion."*

Read more about Siân:  
[uom.link/pgce-sianmorgan](https://uom.link/pgce-sianmorgan)



#### Tom Donnai

Tom spent 13 years teaching in Oldham, as a teacher of History, Head of Department, Professional Mentor and Assistant Head. He joined the University in 2017

and helped to set up the PGCE History course. He has a particular interest in inclusive curricula in History teaching.

*"We work with leading experts in the field of History education such as Dr Jeff Evans, one of the leading voices in LGBTQ+ History in the UK."*

Read more about Tom: [uom.link/pgce-tomdonnai](https://uom.link/pgce-tomdonnai)



# Business and Economics

## PGCE SECONDARY BUSINESS EDUCATION

## PGCE SECONDARY ECONOMICS AND BUSINESS EDUCATION

Encourage students across the 14-19 age range to succeed by giving them the knowledge they need for a career in the business sector and the confidence to undertake a range of practical, analytical and administrative skills necessary to advance in any modern profession. You will benefit from opportunities to teach broader business curriculum areas in schools, such as computing and IT, accounting and key vocational business qualifications.

The PGCE Economics and Business course also prepares you to teach A level Economics.



### STUDENT QUOTE

*"You complete two contrasting placements on your PGCE. One of my placements was within a comprehensive school and the other was at a college. The two placements allowed me to see how different institutions work and allowed me to teach different specifications across different year groups. Throughout my placements, my university mentor was available to support me with any queries I had, and we had regular check-in calls to discuss my progress."*

Aymie Brown, PGCE Secondary Business Education Student



### ALUMNI STORY

A PGCE has always been Yaseen's aspired academic outcome. By training and guiding young students who are just like he once was, he is hoping to contribute back what society and the educational environment has provided for him.

*"Manchester is a vibrant and energetic place to study. The multicultural city is filled with affordable and exciting places to enjoy your leisure time in. Not only that, the people of Manchester are kind and friendly which just makes you feel much more comfortable to enjoy your PGCE."*

Read more Yaseen's story: [uom.link/pgce-yaseenchoudhury](https://uom.link/pgce-yaseenchoudhury)



# Mathematics

## PGCE SECONDARY MATHEMATICS

## PGCE SECONDARY MATHEMATICS WITH ECONOMICS

Teaching mathematics across the 11-16 or 11-18 age range is perhaps one of the most important and rewarding careers in today's society. You'll bring the subject to life through creative and innovative approaches to teaching, giving students equal opportunities to succeed, inspiring them to use their mathematics knowledge in further study and encouraging them to aim high.

The PGCE Mathematics with Economics course also prepares you to teach A level Economics.



### ALUMNI STORY

Ben Douglas, a graduate of PGCE Secondary Mathematics: won a social responsibility award for his work running weekly online Maths tutorials with asylum seekers, refugees and migrant workers.

*"We had a community of adults raring to go, wanting to learn and willing to try any Mathematics we could throw at them. It was joyful and refreshing and I would recommend it to any trainee teacher."*

Read Ben's story: [uom.link/pgce-bendouglas](https://uom.link/pgce-bendouglas)



### STUDENT QUOTE

*"I have enjoyed hearing from guest speakers as part of the course - previous alumni, experienced teachers and charity representatives - as this has equipped me with advice from those in schools or working with young people on a daily basis."*

Molly Reeve, PGCE Secondary Mathematics student

Read more about Molly's experience: [uom.link/pgce-mollyreeve](https://uom.link/pgce-mollyreeve)



Scan to discover all PGCE Secondary courses or use this link: [uom.link/pgce-secondary24](https://uom.link/pgce-secondary24)



# English

## PGCE SECONDARY ENGLISH

PGCE Secondary English at Manchester is an excellent introduction to teaching English across the 11-16 or 11-18 age range, with glowing trainee evaluations and recognised as outstanding by Ofsted. Being taught by experienced teachers and tutors, who have themselves spent many years in a variety of school settings, you will understand and learn how to apply subject knowledge, curriculum, pedagogy and assessment to make sure that all pupils you teach learn to love the subject.



### STUDENT QUOTE

*"If you have a passion for teaching or inspiring younger generations then this is a well-supported course to be on. The course tutors will help build those skills that you may already possess, and you always have someone you can turn to if you need help. The positive experiences I gained from the course and the city will stay with me for years to come."*

Jaanai King, PGCE Secondary English student

Read more about Jaanai's experience: [uom.link/pgce-janaaiking](https://uom.link/pgce-janaaiking)



### ALUMNI STORY

Rachael completed her PGCE Secondary English in 2006 and now works as Head of Department at a local school, as well as Associate Tutor on the English PGCE at Manchester.

*"I knew that the University had an excellent reputation; this is why I wanted to train there. The rigour and academic requirements of the PGCE, combined with the exceptional teaching, prepared me thoroughly for the many demands of my career to date."*

Read Rachael's story: [uom.link/pgce-rachaelturnbatu](https://uom.link/pgce-rachaelturnbatu)



# Geography

## PGCE SECONDARY GEOGRAPHY

Teach students across the 11-16 or 11-18 age range about the ever-changing world they live in and how natural processes and external forces now, and in the past, are affecting the future of the Earth and its inhabitants. Through this broad, interesting and practical subject, you will support your students to make sense of the wonders and complexities surrounding us, helping them to develop a diverse set of skills, applicable to many careers from conservation to policy.



### STUDENT QUOTE

Following an undergraduate degree in BSc Geography, James joined the University for his PGCE Secondary in Geography.

*"One of my highlights has been making an impact on placement for both students and members of staff throughout the school by making the effort to become an integral part of the team and being respected by other members of staff."*

James Adshead, PGCE Secondary Geography student

Read more about James' experience: [uom.link/pgce-jamesadshead](https://uom.link/pgce-jamesadshead)



### ALUMNI STORY

PGCE Secondary Geography alum Adam is teaching the international GCSE at a boarding school in London, while inspiring the next generations through impactful climate change initiatives.

Read Adam's story: [uom.link/pgce-adamparker](https://uom.link/pgce-adamparker)



Scan to discover all PGCE Secondary courses or use this link: [uom.link/pgce-secondary24](https://uom.link/pgce-secondary24)



# History

## PGCE SECONDARY HISTORY

Contextualise current events for students across the 11-16 or 11-18 age range through the study and understanding of what's happened in the past and bring your love of history alive through engaging storytelling and attention to detail. Our experienced university tutors and mentors will help you to transform your subject knowledge into teaching skills and educational theory into practice. As well as sparking your students' passion for history, you'll be arming them with key analytical skills for future success, whatever they choose to do.



### STUDENT QUOTE

*"My subject mentors were great - they were super supportive and helped me develop my teaching in so many ways. My university tutor was incredible - always there at the end of the phone when I needed him and basically a rock throughout."*

Kai Smith, PGCE Secondary History student

Read more about Kai's experience: [uom.link/pgce-kaismith](https://uom.link/pgce-kaismith)



### ALUMNI STORY

Emma is originally from Australia and graduated from her PGCE Secondary History in 2021. She is soon to complete her first year of teaching.

*"My key takeaway has been about how much of teaching (and life!) is about collaboration. The cooperation amongst my PGCE cohort led to a lot of fantastic ideas that never would have happened otherwise."*

Read Emma's story: [uom.link/pgce-emmahollis](https://uom.link/pgce-emmahollis)



Scan to discover all PGCE Secondary courses or use this link: [uom.link/pgce-secondary24](https://uom.link/pgce-secondary24)



# Modern Languages

PGCE SECONDARY FRENCH

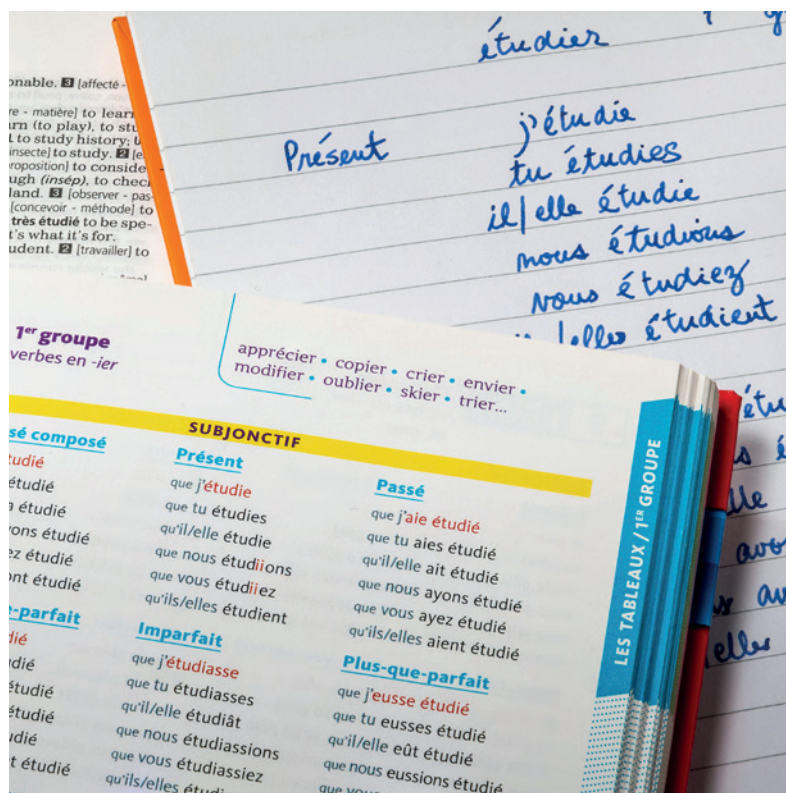
PGCE SECONDARY GERMAN

PGCE SECONDARY SPANISH

Show your students the world through language. Teaching modern languages across the 11-16 or 11-18 age range is an exciting opportunity to inspire students to travel and see beyond boundaries through study of cultures and traditions alongside key linguistic skills. You'll develop your expertise through creative, motivating and engaging language lessons, and they will benefit through the development of an increasingly sought-after skill in today's globalised world.



Scan to watch graduate Tony's experience or use this link: [uom.link/pgce-tonyfitzpatrick](https://uom.link/pgce-tonyfitzpatrick)



## STUDENT STORY

Naomi's year abroad working as a language assistant in Spain has confirmed her passion of working with young people, which is why she wants to pass on this enjoyment through teaching.

*"The tutors are super dedicated to teaching us all that they know; they all come with their own experiences, stories, and advice. Our tutors share this with us to help us develop as teachers ourselves. They are always there if you need anything and have answers and advice for whatever you need."*

Naomi Rittey, PGCE Secondary Modern Languages student

Read more about Naomi's experience: [uom.link/pgce-naomirittey](https://uom.link/pgce-naomirittey)



# Sciences

PGCE SECONDARY BIOLOGY

PGCE SECONDARY CHEMISTRY

PGCE SECONDARY ENGINEERS TEACH PHYSICS

PGCE SECONDARY PHYSICS

PGCE SECONDARY PHYSICS WITH MATHEMATICS

Inspire students across the 11-16 or 11-18 age range by teaching science. The fundamental subjects of biology, chemistry and physics, and underpin everything that goes on in our bodies and minds, the world around us, and how we interact with it.

Through fun and engaging experimentation and demonstration, you can share your passion and show your students the importance of scientific theory and processes, preparing them to take on their world through successful careers in science, conservation, technology and beyond.

During your PGCE, you will learn from experienced teachers and PGCE tutors, as well as visitors from exam boards and the Royal Society of Biology, Royal Society of Chemistry and Institute of Physics. You'll also benefit from sessions run with the University's science departments, Manchester Museum and the Science and Industry Museum.



## STUDENT QUOTE

*"My placements have helped me to develop my teaching skills, especially the observations with other teachers. You pick up so many key ideas that you can apply in your own lessons."*

Will Jones, PGCE Secondary Physics with Mathematics student

Read more about Will's experience: [uom.link/pgce-willjones](https://uom.link/pgce-willjones)



Scan to discover all PGCE Secondary courses or use this link: [uom.link/pgce-secondary24](https://uom.link/pgce-secondary24)



# School Direct

The University of Manchester works with local schools to offer the School Direct route into teaching across PGCE Primary and various PGCE Secondary options.

## SCHOOL DIRECT ROUTE

The School Direct route means that lead schools recruit and select their own trainees, who will go on to complete their teaching placements and some of their training in their partnership schools.

We offer the following PGCE School Direct options:

- Primary School Direct
- Secondary Biology School Direct
- Secondary Business Education School Direct
- Secondary Chemistry School Direct
- Secondary English School Direct
- Secondary French School Direct
- Secondary Geography School Direct
- Secondary German School Direct
- Secondary History School Direct
- Secondary Mathematics School Direct
- Secondary Physics School Direct
- Secondary Spanish School Direct

## PRIMARY SCHOOL DIRECT

If you choose the primary School Direct route, you will cover the taught course content through both a university-based and school-based training course. Some of your taught course will be planned, organised and led by your chosen School Direct alliance.

## SECONDARY SCHOOL DIRECT

The secondary School Direct option largely follows the same course structure as the general PGCE course.

Whichever option you choose, you'll benefit from extended periods of school experience, resulting in up to 25 weeks of classroom experience (based on secondary placements).

### STUDENT STORY

*"I've really enjoyed the many opportunities to spend time in school, not just during my placements but also before these began. By spending time in a number of different schools, looking at a range of subjects and aspects of teaching, I gained great experience to help me when I started in my placement school."*

Tim Charlton,  
PGCE Primary School  
Direct student

Read more about Tim's experience:  
[uom.link/pgce-timcharlton](https://uom.link/pgce-timcharlton)



Scan to discover School  
Direct or use this link:  
[uom.link/pgce-  
school-direct24](https://uom.link/pgce-school-direct24)



# How to apply

Apply for your PGCE through the government website:  
[uom.link/pgce-apply](https://uom.link/pgce-apply)

Applications or CVs sent directly to the University will not be considered.

## WHEN TO APPLY

Applications for PGCE courses starting in September 2024 open in October 2023. We recommend that you submit your application as soon as possible.

## INTERVIEW

Your application will be assessed by our admissions team and if successful, you will be invited to an interview. All universities interview candidates for PGCE courses.

## WHAT TO EXPECT

- The interview process takes place online, and will last around an hour.
- You will receive a link to an introductory talk, and some preparatory materials.
- You will have a personal interview with one of our tutors.
- If you're applying for a primary PGCE, you will deliver a short presentation, details of which will be given when you are invited for interview.
- If you're applying for a secondary PGCE, you will be asked to present your ideas for a short teaching episode, and to complete a subject knowledge assessment.
- As part of your admissions process, you will be required to undergo identity and qualifications checks in person, which will include provision of photographic ID, proof of address and original copies of your academic qualifications.



## ENTRY REQUIREMENTS PGCE PRIMARY

- Bachelor's degree (minimum 2:2 or international equivalent).
- Two A-levels in non-vocational subjects (minimum grade C).
- GCSEs in English Language, Mathematics and Science, plus at least three other non-vocational subjects (minimum grade C).

## ENTRY REQUIREMENTS PGCE SECONDARY

Entry requirements vary dependant on the programme of study, however as a guide we require a minimum of:

- A Bachelor's degree with a 2:2 classification or above in a related subject.
- Each PGCE Secondary programme requires specific GCSE and A-level grades in certain subjects.



Scan to discover our full entry requirements or use this link: [uom.link/pgce24](https://uom.link/pgce24)

10

### Key dates

Applications for PGCE courses starting in September 2024 open in October 2023.



# Plan your finances

## DEPARTMENT FOR EDUCATION FUNDING

The Department for Education provides a range of funding for teacher training including tax-free scholarships, tuition fee loans and maintenance loans, as well as extra support for parents and carers.

Find out what you are eligible for:  
[getintoteaching.education.gov.uk](https://getintoteaching.education.gov.uk)



For more information on fees and funding, please visit our website: [uom.link/pgce-funding24](https://uom.link/pgce-funding24)

## ESTIMATED LIVING COSTS 2023 / 24

Accommodation (self-catered)	£7,800
Meals (excluding meals out)	£2,600
Clothes (including warm clothing and footwear)	£570
Local Transport (excludes travelling home/ visiting friends)	£600
Other (e.g. mobile phone bill, socialising, laundry, photocopying and printing)	£2,900
<b>Total</b>	<b>£14,470</b>

These costs are based on 52 weeks and intended as a guide only



# Accommodation

The University of Manchester has more university-owned accommodation than virtually any other university in the country with more than 8,000 places available, none further than 3 miles from the University campus.

A number of residences are reserved exclusively for postgraduates; in others, undergraduate and postgraduate students are grouped together.

Our halls of residence are self-contained communities where you can make friends and feel at home. Some have their own common rooms, study areas and bars, and all offer social activities for you to enjoy. Whether you choose a modern or a more traditional hall, you'll benefit from excellent security and onsite support from the ResLife team.

Our ResLife advisors are on hand in every hall, providing the help you need to settle into your new community, and they will continue to look out for your wellbeing throughout your time living with us.

If you are based outside the EU, we guarantee you a place in university-managed accommodation if you come to Manchester unaccompanied and apply by 31 August in the year of entry.

For the latest information on our accommodation offering, including costs, visit the Accommodation Office website.

Find out more: [uom.link/pgce-accommodation24](https://uom.link/pgce-accommodation24)





# Let's talk



## CONTACT US

Email: [pgce@manchester.ac.uk](mailto:pgce@manchester.ac.uk)

School of Environment,  
Education and Development  
The University of Manchester  
Ellen Wilkinson Building,  
Oxford Road  
Manchester, M13 9PL

## MEET US

We regularly host PGCE  
Primary and Secondary  
information sessions which  
may be on-campus or online.  
You can find the latest  
information on events on our  
course profiles by scanning  
the QR code below or using  
this link: [uom.link/pgce24](https://uom.link/pgce24)



## TRAIN TO TEACH ROADSHOWS

We attend the Department  
for Education's Train to Teach  
roadshows in Manchester  
and the surrounding region.

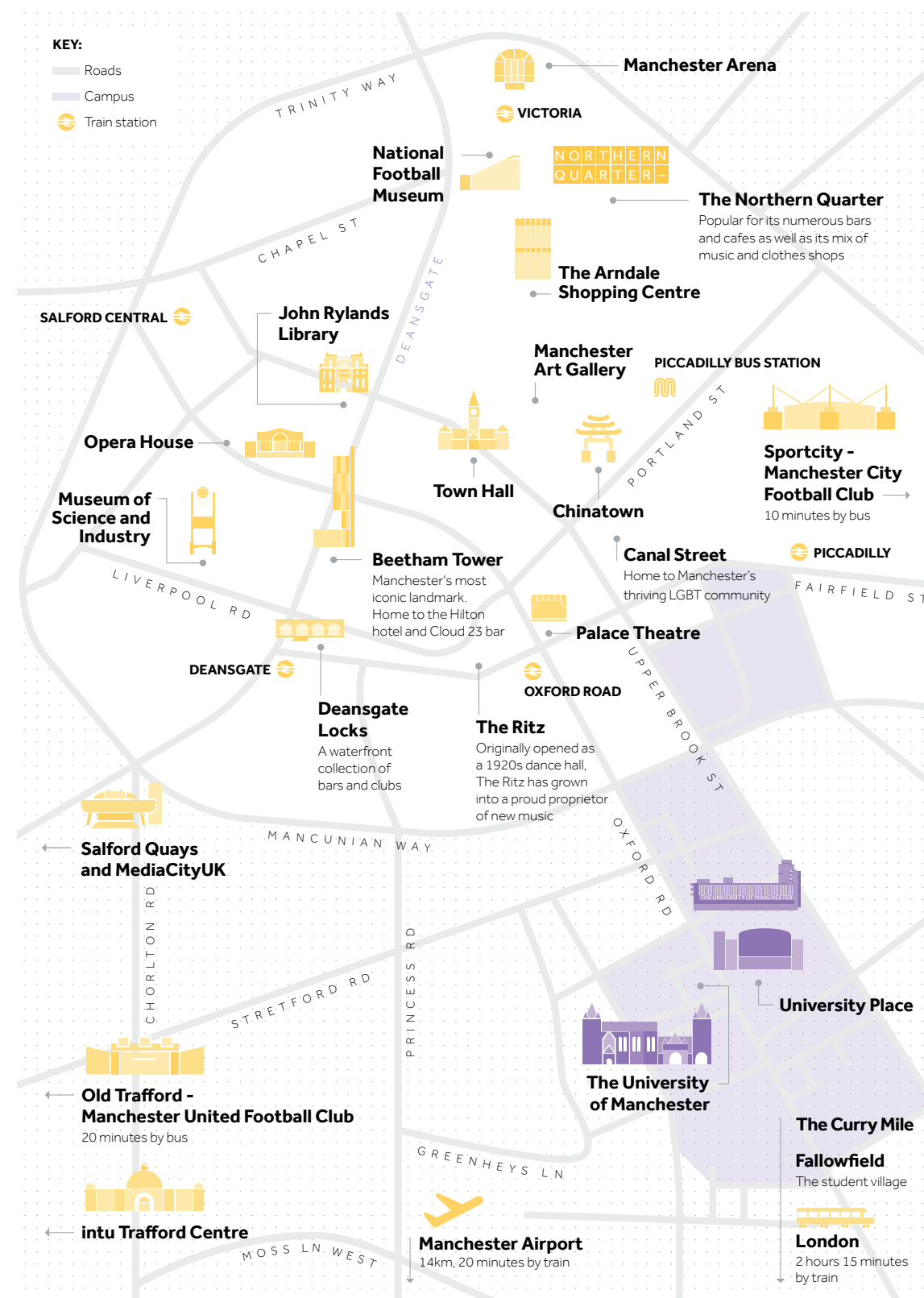
Check online for upcoming events:  
[traintoteach.education.gov.uk](https://traintoteach.education.gov.uk)

## DISCLAIMER

This prospectus was produced  
in 2023 for the purposes of the  
2024 intake. It has therefore  
been produced in advance of  
course starting dates. As such,  
for a number of reasons, course  
information, including, for example,  
details of course content, module  
availability and/or published term  
dates, may be amended either prior  
to or after you apply for a place on a  
course. These reasons may include,  
but are not limited to:

- the need to make, for operational and/or academic reasons, reasonable changes to the content and teaching offered in relation to any course;
- the withdrawal of courses due to cohort numbers being insufficient;
- a course not receiving the relevant accreditation required;
- interruption or loss of key services due to circumstances beyond our control, including fire, flood or other operational issues.

Prospective students are therefore reminded that they are responsible for ensuring, prior to applying to study at The University of Manchester, that they review up-to-date information by searching for the relevant course here. All information relating to tuition fees and funding is correct at the time of publication. However, this may change for a number of reasons, including changes to government policy.





## **GET IN TOUCH**

Tel: +44 (0) 161 543 4710

(available for calls from Monday to  
Friday 9.30am-1pm GMT)

Email: [pgce@manchester.ac.uk](mailto:pgce@manchester.ac.uk)

School of Environment, Education and Development  
The University of Manchester  
Ellen Wilkinson Building,  
Oxford Road  
Manchester, M13 9PL



Scan to discover PGCE at  
Manchester or use this link:  
[uom.link/pgce24](https://uom.link/pgce24)