

MANCHESTER
1824

The University of Manchester

SCHOOL OF ENVIRONMENT,
EDUCATION AND DEVELOPMENT

POSTGRADUATE COURSES



Where are they now?

Teaching and research at the School of Environment, Education and Development covers a wide range of disciplines, meaning our graduates embark on careers both locally and globally to address the grand challenges of this century.



BERNARDO WONG

Bernardo, originally from Hong Kong, graduated from MA Digital Technologies, Communication and Education in 2022, following a career as research and project assistant. Driven by his passion for eLearning and digital learning, Bernardo now works as Graduate Digital Learning Developer.

"I made numerous connections with experts in the digital learning field. We can always share and learn from each other, which I think is very important because this field is always changing. We need to keep driving ourselves to learn to produce the best digital learning content."



CLAIRE FOUWEATHER BROWN

Claire is a Chartered Environmentalist with over 18 years' experience in the fields of sustainability and environment. Following her graduation in Landscape Planning and Management, Claire has now returned to The University of Manchester as a PhD Researcher, focusing on Heating and Cooling demand in Housing in a Changing Climate.

"As part of my course, we got to experience a lot of external field trips, which really gave me a good overview of the different aspects you can get involved with in your career."



SIRLY CASTRO TUIRÁN

Sirly, an international student from Colombia, graduated from Global Urban Development and Planning at Manchester in 2019. Sirly now works as a Consultant at the Inter-American Development Bank back home in Colombia, helping to improve lives in Latin America and the Caribbean.

"The course offered an interdisciplinary approach and research tools with focus on global south urban development issues, making it a unique programme. It expanded my view on analysing particular contexts to design strategies adapted to them and working with communities in all the process."

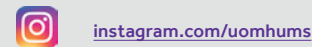


PATRICK MOONEY

Patrick studied BA Economics from 2013 to 2016 and MSc Real Estate Asset Management from 2016 to 2017. Following his graduation from Manchester, he initially worked as a Chartered Surveyor at CBRE and then moved on to a Senior Surveyor role at Cushman & Wakefield, overseeing UK Logistics and industrial advisory.

"The course gave me a good grounding to enter the real estate industry. Completing my master's enabled me to sit my Royal Institution of Chartered Surveyors (RICS) Assessment of Professional Competence to become qualified as a chartered surveyor."

SOCIAL



AMBASSADORS

Got a question for one of our students? Chat to our ambassadors online:

uom.link/seed-pg



STUDENT BLOGS

The best way to find out about what studying with the School of Environment, Education and Development is like is to read our student blogs:

uom.link/seed-pg-blog



Contents

WELCOME TO MANCHESTER	04-05
FOLLOW IN THEIR FOOTSTEPS	06-07
ABOUT THE SCHOOL	08-09
MANCHESTER INSTITUTE OF EDUCATION	10-19
GLOBAL DEVELOPMENT INSTITUTE	20-35
GEOGRAPHY	36-45
PLANNING & ENVIRONMENTAL MANAGEMENT	46-59
FLEXIBLE ONLINE LEARNING AT MANCHESTER	60-61
HOW TO APPLY	62-63
YOUR FUTURE	64-65
ACCESS OUR SUPPORT	66-67
PLAN YOUR FINANCES	68
ACCOMMODATION	69
LET'S TALK	70-71

Here at Manchester, we're proud to do things differently. At our university, ideas become actions – and those actions change lives.

We're a truly international institution, welcoming thousands of people from across the world to join our community. We enjoy a global reputation for pioneering research

and innovation, which connects us with people and organisations worldwide.

Choose Manchester and you'll experience an education and environment that will set you on a path to become a global citizen and make your mark on the world.



Top university

6th in the UK, 9th in Europe and 28th best university in the world

(QS World Rankings 2023)



Most targeted

The most targeted UK university by top graduate employers

(Higher Fliers Report 2023)



Impact

One of the world's leading institutions for action on sustainable development

(Times Higher Education University Impact Rankings 2023)



Global

Over 45,000 students from over 170 countries



Research power

5th in the UK for research power

(Research Excellence Framework 2021)

Welcome to

Manchester

Follow in their footsteps

Join a community of global innovators and pioneers whose achievements have helped shape the modern world – a place where 25 Nobel Prize winners have worked or studied.

You'll study in an academic environment that helps brilliant thinkers turn inspiration into reality, encouraging enterprise, experimentation and creative thinking.



Andre Geim and Kostya Novoselov are awarded the Nobel Prize in Physics for their isolation of graphene's potentially world-changing properties.

HERE ARE A FEW HIGHLIGHTS FROM OUR HISTORY

1904

Catherine Chisholm becomes the first woman to graduate in Medicine from Manchester Medical School. She helped set up the Manchester Hospital for Babies.

1906

Christabel Pankhurst, who would become a leading figure in the suffragette movement, becomes the first woman to graduate from the university in Law.

1915

William Bragg, while still a research student, becomes the youngest ever winner of the Nobel Prize in Physics.

1917

Ernest Rutherford becomes the first person to create an artificial nuclear reaction in a laboratory, ushering in a new era of nuclear research.

1945

Ellen Wilkinson becomes Britain's first female Minister of Education. Born in Manchester, Ellen won a scholarship to study at the university and entered politics after graduating.

1948

Freddie Williams and **Tom Kilburn** successfully run a program on 'The Baby', the world's first digital stored-program computer.

1948

Alan Turing, one of the WWII codebreakers, completes pioneering work in machine intelligence at Manchester, paving the way for artificial intelligence.

1957

Bernard Lovell completes the Lovell Telescope, the world's largest steerable radio telescope at the time, at Jodrell Bank.

1974

Jean McFarlane* is appointed as the first Professor of Nursing in the UK by the university and goes on to establish the country's first nursing degree.

1979

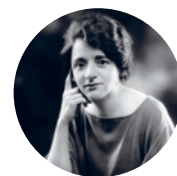
Arthur Lewis, Britain's first black professor, becomes the first black winner of a Nobel Prize in Economic Sciences.**

1993

Michael Smith, a Manchester PhD graduate, receives the Nobel Prize in Chemistry for his work on DNA engineering.

2010

Manchester alumna **Dame Sally Davis** is appointed as the UK's first female Chief Medical Officer.



*Permission to use reproduction material from the Royal College of Nursing **Permission courtesy of Keystone/ Stringer/ Getty



Over 2,000
postgraduate students
from 85 countries



93% of research activity has
been rated 'world leading' or
'internationally excellent'

(Research Excellence Framework 2021)



We train around 250 teachers
per year to make a difference
in schools locally and
internationally

About the School

We offer outstanding courses in Architecture, Education, Geography, Global Development, Planning, Environmental Management and Real Estate. During your time with us, you'll be taught by world renowned experts who will be asking you to join them in influencing the grand challenges of this century, such as climate change, nature recovery, poverty eradication, securing social justice, and sustainable urbanism.

To prepare for the real-world challenges and opportunities you will face after graduation, we will encourage you to put your skills and expertise into practice by applying interactive learning approaches in our classroom, workshop, laboratory and fieldwork teaching.

Join a community looking to make an impact in everything they do, working collaboratively to tackle issues big or small. We strive together to actively address inequalities and promote diversity and inclusion. During your time with us, you will be empowered to use your skills, expertise and findings to join us in making a difference. Join us and equip yourself with the skills to mobilise the lasting positive changes you want to see in the world.



Scholarships available



Gain a global perspective
with international field trips



Our research influenced the
city of Manchester's
commitment to becoming
zero carbon by 2038*

*As part of The Tyndall Centre for Climate Change Research, a network of universities.



Fervent socialist, suffragist and Britain's first female minister of education, Ellen Wilkinson was a trailblazer for equality and social justice.

Born to a working-class family in Manchester in 1891, Wilkinson won scholarships for every stage of her education, including a place to study history at the University. After graduating she entered the political arena with elected positions on Manchester's council and as the MP for Middlesbrough (1924) and Jarrow (1934).

She fought passionately for social change on behalf of those who needed it the most, introducing free school meals for children whose families couldn't afford them and leading the Jarrow Crusade, a 300-mile march of unemployed shipwrights and steelworkers to petition the British government for help.

Wilkinson was known then, and now, as 'Red Ellen' and 'the fiery particle'.

MANCHESTER INSTITUTE OF EDUCATION

Welcome to the Manchester Institute of Education (MIE), where you will study as part of an international community of peers from a range of backgrounds and experience, all motivated by the opportunity to make a difference to people's lives and to the global society of the future.

You'll benefit from practical opportunities through our close partnerships with educational institutions, and enhance your knowledge of broader contextual issues in education through

working side-by-side with inspirational researchers committed to social justice.

Whether you want to further your current career in education, you're looking to shift focus professionally, or you simply wish to delve deeper into the study of educational issues, a postgraduate degree from Manchester will equip you with exceptional skills and knowledge, and provide you with the advice and support you need to take the next steps towards a successful future.



WHY MANCHESTER?



Top ten

Ranked 8th in the UK for Education

(QS World University Rankings by Subject 2023)



Research excellence

Research in the Manchester Institute of Education is 9th in the UK*

(*Research Excellence Framework 2021, overall result ranked by Grade Point Average)



Proud heritage

We've been experts in Education for over 100 years



Make a difference

We're supporting schools to improve pupil wellbeing through initiatives like our #BeeWell project



Officially recognised

Our MEd Psychology of Education is accredited by the British Psychological Society



Scan to discover Education at Manchester or use the link uom.link/education-pg

GRADUATE DESTINATIONS

During their time at the MIE, our students form broad educational knowledge and professional experience in educational environments. MIE graduates go on to shape education policy and practice through positions in NGOs and in the public and private sector.

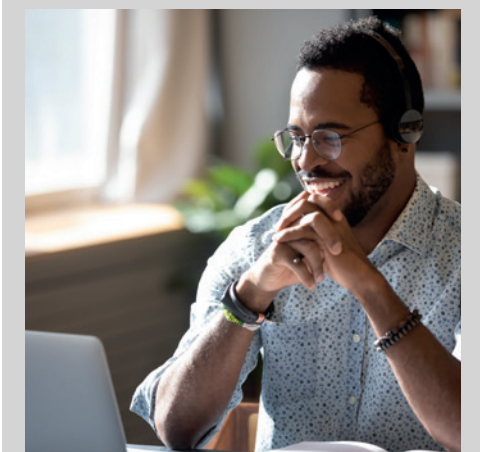
POTENTIAL CAREERS INCLUDE:

- Teaching
- Lecturing
- Research
- Teacher education
- Educational administration
- Leadership
- Consultancy
- Publishing
- Testing
- Assessment

Where will your degree take you?



Find out more about MIE graduates' careers: uom.link/education-pg-careers





STUDENT SPOTLIGHT

SAULE'S MANCHESTER

Saule studied BA German and English Language at Manchester and decided to stay on for an MA in Educational Leadership.

She chose to study Educational Leadership as it complemented her undergraduate language degree and proved valuable in a society with so many educational debates and unresolved issues. For Saule, the highlight of her course was being taught by brilliant and inspiring staff who were open for discussion at any time.



ACADEMIC SPOTLIGHT

MEET THE ACADEMICS

With the Manchester Institute of Education being home to a breadth of specialist expertise, you'll be learning from experts in education with a passion for making a difference in young people's lives.

DR OLA DEMKOWITZ

Lecturer in Psychology of Education

Ola is a Manchester graduate turned lecturer and researcher who undertakes research with young people to understand mental health difficulties and which factors can promote good mental health.

She was motivated by her early career working with children and her own personal life experiences to embark on a research career and focus on adolescent mental health.

Her recent work on understanding the experience of teenagers during lockdown and the pandemic has provided resources and support for young people, practitioners and policy makers.

"When I arrived at MIE it was the first time I'd really connected with people doing research. They talked about it with such passion, and there was real clarity in how the work taking place in the department (and the University) could translate into meaningful social change in the world."

Read more about Ola and her research: uom.link/education-pg-ola



DR CARL EMERY

Lecturer in Education

Carl grew up in Manchester inspired by the creativity and energy of the University. His early career in teaching and local government raised many questions which he sought to answer by returning to the University where he completed his PhD and continued his research career investigating the intersection between poverty, mental health and education.

He now trains social justice poverty researchers to better understand local poverty, banish myths and stereotypes and bring this knowledge back to the schools.

"Things like asking what they did in the holidays can make some children feel really uncomfortable, so it's about asking different questions that enable children to talk about their experiences - we want to give them a space to tell their stories. My research and teaching are driven by a desire to empower and enable disadvantaged communities to shape, reimagine and deliver impactful and equity-driven education at the local level."

Read more about Carl and his research: uom.link/education-pg-carl

Digital Technologies, Communication and Education MA

ON-CAMPUS: 12 MONTHS (FULL-TIME); 24 MONTHS (PART-TIME)

DISTANCE LEARNING: 2 OR 3 YEARS

MA Digital Technologies, Communication and Education is an award-winning programme that explores how learning and collaboration are being transformed by digital media. This MA is designed to help teachers, lecturers, administrators, managers, e-learning designers, trainers and anyone else with an interest in education to develop their digital skills, collaborate effectively and understand the changing environment in which we all live and work. This MA is designed to help teachers, lecturers, administrators, managers, e-learning designers, trainers and anyone else with an interest in education to understand the impact of digital technologies and media.



Scan to discover MA Digital Technologies, Communication and Education or use the link: uom.link/education-pg-dtce

ALUMNI STORY

Miaomiao Lyu became passionate about the combination of digital technology and education during her undergraduate degree in Media and Communications. DTCE enabled her to learn all about the digital environment, benefitting her employment and entrepreneurship.



Read Miaomiao's story: uom.link/education-pg-miaomiao

STUDENT QUOTE

"The course has given us enough resources to reflect on our judgments as teachers, learners, course designers and educational technologists on the use of technology in different contexts of education and make the optimum use of it where necessary. The course has broadened my professional horizon as a communication strategist towards catering to the designing of particular courses for contextual educational settings."

Mithila Hore
MA Digital Technologies, Communication and Education student

Read more about Mithila's experience: uom.link/education-pg-mithila

Educational Leadership MA

12 MONTHS (FULL-TIME)

MA Educational Leadership is the ideal programme if you are - or aspire to be - an educational leader, school-based practitioner or educational policymaker.

You will be taught by internationally renowned academics in the fields of leadership, management, and school improvement, as well as senior educational experts such as headteachers and policymakers. This range of voices - and creative pedagogies - will equip you with the knowledge, skills, insights and capabilities to become an inspirational and impactful leader within Education, in any context.



Scan to discover MA Educational Leadership or use the link: uom.link/education-pg-ed-leadership



Are you a working professional looking for a part-time course to fit around your work? Have a look at our online and blended courses and find the master's that fits you. For more information, see page 60

ALUMNI STORY

Daniel Monaghan graduated from MA Educational Leadership in 2013 and has had a varied and exciting career since. He's gone from teaching in inner-city schools to senior leadership development roles at high profile organisations like Teach First and The Hut Group.



He now runs his own leadership development business, alongside training as a forester, with the aim of working as a forest school teacher, inspiring children through providing them access to nature.

Read Daniel's story: uom.link/education-pg-daniel

STUDENT QUOTE

"What I enjoy most about my degree is the fact that all of my classmates have two or three years relevant working experience. We have opportunities to communicate and discuss educational theories together, and so it's a good opportunity for me to find out about education in other countries and learn from peers and their experiences. My time at Manchester has fostered my capability for learning. I can understand not only what I want and need to learn, but also how to learn. This learning experience gives me confidence in starting my future career."

Duan Sun
MA Educational Leadership student

Read more about Duan's experience: uom.link/education-pg-duan

Education for a Sustainable Environment MA

12 MONTHS (FULL-TIME)

Study on an innovative course to help address local and global environmental and sustainability challenges in and through education.

The MA Education for a Sustainable Environment provides you with knowledge, insights and competencies to become effective and creative practitioners, policy makers, researchers and communicators in the field of sustainability education. Benefit from a creative blended pedagogy to encourage sustainability and flexibility.

Students on the MA Education for a Sustainable Environment take the following four core units:

- An Introduction to Sustainability Education
- Community and Policy in Sustainability Education
- Approaches to Sustainability Education
- Planning and Piloting Research in Sustainability Education.

Students will further take three elective units in other areas of Education, and one elective unit from another discipline within the School.



Scan to discover more about this course or use this link: uom.link/education-pg-edse



DUAL TEACHING

The MA programme is taught using a blended model that allows each student to decide whether they will study online or onsite.



Watch our programme directors discuss this master's: uom.link/education-pg-edse-video



Find out more about dual teaching: uom.link/education-pg-dual-teaching

ACADEMIC SPOTLIGHT

Dr Juup Stelma, Senior Lecturer in TESOL and Co-Programme Director of MA Education for a Sustainable Environment



"I am originally from Norway, but with a Dutch family background. Besides Norway, I have worked/studied/lived in the United States and South Korea. I have been in the United Kingdom since 1998. I did an MA TESOL and a PhD Education at the University of Leeds, and I joined The University of Manchester in 2005."

International Education MA

12 MONTHS (FULL-TIME)

COURSE LIST

- International Education MA
- International Education (Equity, Diversity and Inclusion) MA
- International Education (Curriculum and Pedagogy) MA
- International Education (Higher Education) MA
- International Education (TESOL) MA

Our master's courses in International Education will provide you with the opportunity to engage in structured study of, and reflection upon, critical understandings of educational theories and concepts and to develop international mindset and skills across a range of educational and community-based contexts.

These courses have been designed for teachers and other education professionals working in a range of national and international settings and are ideal if you're looking to develop your career by securing new posts or promotion.

Our four unique specialist pathways each offer tailored modules and expert dissertation supervision.



Scan to discover the courses or use the link: uom.link/education-pg-courses



ALUMNISTORY

Nuoxin graduated with MA in International Education in 2022 and now works as an ASES Event Administrator at The University of Manchester, organising and implementing recruiter events, careers fairs, and careers projects.

"The MA International Education course has laid a solid theoretical foundation for me in international education and higher education, which is of great help to me as an intern and later an event administrator at The University of Manchester. In addition to courses, our project also provides many opportunities for self-improvement. For example, being a student representative has improved my practical ability in higher education."

STUDENT QUOTE

"Being a MA International Education student is an eye-opening and worthwhile experience for me. I gain diverse perspectives from staff and classmates and feel confident to make a meaningful contribution to the world of education."

Warsita Noer Ardiyanti

Psychology of Education MEd

12 MONTHS (FULL-TIME)

24 MONTHS (PART-TIME)

The MEd Psychology of Education, accredited by the British Psychological Society, has a long-standing reputation for excellence.

The course covers core areas of psychology specifically in relation to education.

Students will develop critical skills in the evaluation and analysis of current research, theory and practice across education and psychology.

The MEd can ignite or progress your career pathway within educational psychology, helping you to target goals such as the Professional doctorate in Educational Psychology, a research career, as well as supporting careers in schools or other educational organisations.



Scan to watch a video from students studying Educational Psychology at Manchester or use the link: uom.link/education-pg-med-video



Scan to discover this course or use the link: uom.link/education-pg-med



Study a course accredited by the British Psychological Society (BPS), making you eligible for Chartered Membership of BPS.

STUDENT QUOTE

"My academic experience here in Manchester has been fantastic. The University provides us with a range of useful learning resources and I've found the course content very interesting. I particularly enjoy the way we're taught here that encourages students to contribute to group discussions and learn from each other."

Siu Kwan Lee, Hong Kong, MEd Psychology of Education student

ALUMNI STORY

Farhana Choudhury studied both her undergraduate degree and her MEd Psychology of Education at The University of Manchester, winning a Junior Nobel Prize for Education along the way.



TESOL MA

12 MONTHS (FULL-TIME)

24 MONTHS (PART-TIME)

MA TESOL is particularly directed at teachers with experience of teaching English to speakers of other languages, allowing them to reflect on that experience and to develop their professional thinking and expertise. It offers pathways in:

- Educational Technology
- Intercultural Education
- Materials and Course Design
- Teacher Education

for those wishing to specialise in these areas.

The course enables TESOL practitioners, who come from different parts of the world, to further their careers with regard to obtaining positions of seniority, undertaking new areas of professional activity or contributing to the professional development of other teachers.



Scan to discover MA TESOL or use the link: uom.link/education-pg-tesol

STUDENT QUOTE

"I chose MA TESOL at Manchester because it is tailored for experienced teachers, having come from teaching IELTS in a training institute. I wanted to explore new directions and during the year became interested in English for Academic Purposes (EAP), for which I even got a teaching job at the University now! The programme provided me with a lot of mentoring both as a student and towards my new career opportunity. The tutors are very professional and take into account our actual needs and I learned a lot through interaction with them and with my peers."

Angi Chen
MA TESOL student





GLOBAL DEVELOPMENT INSTITUTE

The Global Development Institute (GDI) addresses global inequalities through world-class, interdisciplinary research, in order to promote a socially-just world in which all people, including future generations, can enjoy a decent life.

Our varied research is split into seven groups: digital development, migration, refugees and asylum, global urban futures, growth and distribution, politics, governance and management, global production networks, trade and labour and, resources, environment and development.

Made up of over 60 academics and almost 700 postgraduate students overall, the GDI is one of the largest providers of development studies research and postgraduate education in Europe.

Find out how we're changing things for the better: uom.link/gdi-pg



WHY GDI?

Research excellence

First in the UK for research environment and second overall

(Research Excellence Framework 2021)



Real-world impact

Ranked second in the world for our impact on the Sustainable Development Goals

(THE Impact Rankings 2023)



Multicultural environment

Join a multicultural community of students from over 45 countries



Alumni network

Join our alumni network of more than 10,000 graduates across the world that help drive forward sustainable development and social justice for all



History

The GDI is a culmination of an impressive history of development studies at Manchester which has spanned more than 60 years



Find out more about our history: uom.link/gdi-pg-history

GRADUATE DESTINATIONS

The GDI will equip you with the skills for specialist positions in development-related NGOs, third-sector organisations, government and policy-influencing positions, as well as public and private organisations, including careers in:

- Policy development
- Project management
- Management and human capital development
- Programme development
- Development consultation
- Development finance and advising
- Research

TOP EMPLOYERS INCLUDE:

- African Union
- Oxfam
- Inter-American Development Bank
- Care
- Mercy Corps
- The British Council
- The World Bank
- The Foreign, Commonwealth and Development Office
- United Nations
- USAID

Where will your degree take you?



Find out more about our GDI graduates: uom.link/gdi-pg-careers



STUDENT SPOTLIGHT

KWAME'S MANCHESTER

Kwame came to study at the Global Development Institute, taking a year out of his career in his home country Ghana. The GDI appealed to him because of its course offerings being able provide him with the answers to the puzzles that he wanted to solve. Kwame was awarded one of our GDI Merit Awards, and during his year at the University secured the role of General Secretary at the Students' Union - the first international student to do so in the history of the Union.

Learn more about Kwame's experience: uom.link/gdi-pg-kwame

ACADEMIC SPOTLIGHT

MEET THE ACADEMICS

The Global Development Institute has a variety of outstanding academic experts who are driven by the desire to advance social justice by conducting world-class, interdisciplinary research that achieves real impact.



PROF UMA KOTHARI

Professor of Migration and Postcolonial Studies

Uma Kothari is Professor of Migration and Postcolonial Studies at the Global Development Institute. For Uma, Manchester is an inspiring place to work and the perfect place for her research given its colonial and postcolonial history.

"I am enthralled poring over documents in libraries and archives, and realise that in the end it's all about people and their stories."

Find out more about Uma: uom.link/gdi-pg-uma



PROF BINA AGARWAL

Professor of Development Economics and Environment

Well known for her pioneering work on gender inequality in property and land, as well as on environmental issues, Bina is Professor of Development Economics and Environment at Manchester, having joined the GDI in 2012.

"The GDI is creatively interdisciplinary, with both economists and other social scientists, runs master's on a diversity of topics on which I had worked, and brings together a nice mix of teaching and research."

Find out more about Bina: uom.link/gdi-pg-bina



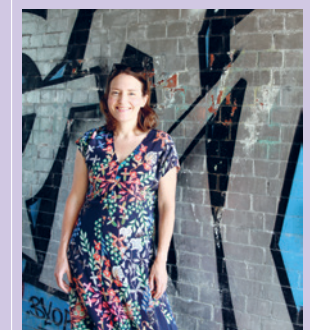
DR NICOLA BANKS

Senior Lecturer in Global Urbanism and Urban Development

Meet Nicola, Senior Lecturer in Global Urbanism and Urban Development in GDI. What attracted her to the GDI is its world-leading research and inspirational people, together with Manchester's commitment to social responsibility and impact.

"The biggest attraction to join Manchester was its people. It is an inspiring place to work; I am always learning thanks to my colleagues, my students, and my research partners."

Find out more about Nicola: uom.link/gdi-pg-nicola



PROF RICHARD HEEKS

Professor of Digital Development

With cutting-edge research across six books and over 150 other papers and reports, Richard is one of the most pre-eminent and highly cited academics in the emerging sub-discipline of digital development/ICT4D.

"I recognised very early on that digital development was a good choice of research domain. Not only – sadly – are development challenges always going to be with us, but the constant innovation and increasing role of digital systems means there are always new topics emerging."

Find out more about Richard: uom.link/gdi-pg-richard

Development Economics and Policy MSc

12 MONTHS (FULL-TIME)

24 MONTHS (PART-TIME)

MSc Development Economics and Policy provides training in contemporary economic theory, applied economics and quantitative methods relevant to developing and transitional economies.

Run jointly by the Global Development Institute and the Department of Economics within the School of Social Sciences, it is especially appropriate if you're seeking to practice as a development economist in government, the private sector, a multilateral organisation or an NGO.



Scan to discover this course online or use the link: uom.link/gdi-pg-dev-economics



Watch how Manchester is leading the world in addressing global inequalities: uom.link/gdi-pg-inequality

ALUMNI STORY

Development and Economics graduate Yoko now works as the Regional Operational Information Management Officer for the UN World Food Programme in Cairo, Egypt.

"I was always interested in Rural Development and Economics, and The University of Manchester had a strong master's course in this area."

Read Yoko's story: uom.link/gdi-pg-yoko

STUDENT QUOTE

"The course provides a well-balanced mix of economics and public policy units, which I felt was essential for economists working in development. Additionally, as it is delivered by one of the best development institutes in the world, being a part of the course provides me with the opportunity to learn from leading researchers in the field."

Richard Sean Lobo, India
MSc Development Economics and Policy student

Find out more about Richard: uom.link/gdi-pg-lobo



Development Finance MSc

12 MONTHS (FULL-TIME)

24 MONTHS (PART-TIME)

This master's will provide you with a thorough understanding of specific aspects of development finance, equipping you with the necessary skills to make a meaningful contribution to policy formulation and implementation.

The course provides skills in identifying, investigating and justifying possible solutions to problems arising out of the theory and practice of economic development, including the competency in developing a reasoned argument, critically considering data sources and defending different approaches.



Scan to discover this course online or use the link: uom.link/gdi-pg-dev-finance



ALUMNI STORY

Development Finance graduate Shahryar from Iran now works as Chief Advisor in Strategic Planning to the CEO in the Social Insurance Fund for Farmers, Rural Residents, and Nomads (SIFRN), making significant impact in poverty alleviation and achieving inclusive social protection.

"Having a master's degree in Development Finance from The University of Manchester and the GDI has been a career booster. The critical thinking, theoretical knowledge, and practical skills obtained at GDI have made me a good investment for employers in the field of development."

Read Shahryar's story: uom.link/gdi-pg-shahryar

International Development: Public Policy and Management MSc

12 MONTHS (FULL-TIME)

24 MONTHS (PART-TIME)

This master's provides interdisciplinary training that enables economists, policymakers, managers, and researchers to be fully conversant with current issues of public policy and management in an international development setting.

Originally conceived for those already working in the public sector, it has evolved into a highly multidisciplinary course that is appropriate to modern professionals from a wide variety of backgrounds, who have an interest in critically reviewing, understanding and designing cutting-edge public policy.



Scan to discover this course online or use the link: uom.link/gdi-pg-public-policy

ALUMNI STORY

After a decade of work in community and grassroots organisations in Africa, America, Europe and Australia, Katie recognised the need to elevate her theoretical knowledge. She spent two years researching to determine the university that would best equip her with both a solid theoretical base and the space to reflect on development practices around the globe.

"I learned more about myself, different cultures and my field than I could have in any other country simply because of the breath of the student body and the excellence standards of The University of Manchester."

Read Katie's story: uom.link/gdi-pg-katie



Human Resource Development (International Development) MSc

12 MONTHS (FULL-TIME)

24 MONTHS (PART-TIME)

MSc Human Resource Development (International Development) will enable you to critically understand the role of human resource development in supporting economic and social advancement, through the improvement of public services and the education of individuals, organisations and communities.

It aims to develop your critical appreciation of globalisation processes, policy initiatives and development management plans to support skills development, competitiveness and human capabilities.



Scan to discover this course online or use the link: uom.link/gdi-pg-hrd



ALUMNI STORY

Graduate Maria came to study Human Resource Development (International Development) at Manchester, as she was particularly interested in the mix of HR related and educational topics covered in the course.

"More than helping me because of the degree itself, it helped me with the knowledge I gained. It helped me realise how we should act for staff development."

Read Maria's story: uom.link/gdi-pg-maria

STUDENT QUOTE

"I am particularly enjoying the fact that lecturers encourage group discussions - I had to work on a group project for one of my modules and it has been amazing! I was able to meet people from different countries with different backgrounds, so we could learn a lot from each other."

Federica Russo, Italy
MSc Human Resource Development (International Development) student

Find more about Federica: uom.link/gdi-pg-federica

Human Resource Management (International Development) MSc

12 MONTHS (FULL-TIME)

24 MONTHS (PART-TIME)

This MSc is a practical yet critical introduction to the philosophy, values, policies and practices of human resource management in the context of Low- or Middle-Income Countries. It is an ideal choice if you are interested in human resources at organisations in transitional and developing countries, for example as a HR practitioner/manager. The course shall help to develop a range of skills and understanding associated with human resource management in public, private and non-profit organisations.



Scan to discover
this course online
or use the link:
uom.link/gdi-pg-hrm

ALUMNI STORY

Norfarizal bin Othman is currently heading up the Public Service Department in Brunei Darussalam, which involves planning, managing and developing human resource in the public sector towards achieving competent human resource. Norfarizal is now leading his organisation towards the improvement of the performance, productivity and the quality of leadership in the Civil Service.

Read Norfarizal's story: uom.link/gdi-pg-norfarizal

STUDENT QUOTE

"I became interested in human resource while I was pursuing my undergraduate degree and wanted to learn more about the field. One of my highlights of this course was when, for one of my modules, I decided to conduct interviews of millennials about their work experience – I learned a lot from them."



Grishma Kumari, India
MSc Human Resource Management
(International Development) student

Find out more about Grishma: uom.link/gdi-pg-grishma



Global Development MSc

12 MONTHS (FULL-TIME)

24 MONTHS (PART-TIME)



Our Global Development courses follow an umbrella structure that house a range of more specialised master's courses, each of which explores a key dimension of global development under four broad thematic headings:

- Global political economy
- Governance and management
- Poverty and inequality
- The environment

There is no better place to study Global Development than the GDI: as one of the top institutions for our impact on the Sustainable Development Goals (THE Impact Rankings 2023), we are proud to bring cutting-edge insights from our research into all our postgraduate teaching and tackle global inequalities.



Watch how Manchester is leading the world in addressing global inequalities: uom.link/gdi-pg-inequality

Global Development MSc

This master's offers a coherent and interdisciplinary grounding in the core aspects of global development theory, policy and practice.

Global Development: Development Management MSc

This course analyses the management, planning and policy-making aspects of the development process.

Global Development: Environment and Climate Change MSc

Gain critical insights into the key strategies to promote climate change adaptation, mitigation and sustainable development in the context of low- and middle-income countries.

Global Development: Globalisation, Trade and Industry MSc

This master's analyses industrial development strategies and international trade policies and their implications for developmental processes.

Global Development: Migration, Mobility and Displacement MSc

This MSc offers a coherent, interdisciplinary and applied approach that analyses the interaction between migration and development.

Global Development: Politics, Governance and Development Policy MSc

This course examines the obstacles to, and pathways towards, more legitimate, democratic and pro-poor forms of governance at global, national and local levels.

Global Development: Poverty and Inequality MSc

This master's provides critical insights into different perspectives on how poverty, inequality and development can be understood, measured and explained.



Scan to discover our Global Development courses online or use the link: uom.link/gdi-masters



ALUMNI STORY

After her studies at the GDI, alumna Rita Robert Otu returned to Nigeria in 2009 and was inspired to start the Peas Food project, teaching green skills to young women.

"Emancipating women farmers from abject poverty and giving them confidence has always been my passion. As a Nigerian, I have a responsibility to grow women's voices in agriculture. When a woman is empowered, it trickles down to the roots!"

Read Rita's story: uom.link/gdi-pg-rita



STUDENT QUOTE

"The highlight of my course so far has been discovering a particular field that I had no idea about, and it's wonderful how I am considering pursuing a doctorate in that field now. The most challenging part has been that it's a bit new to me. The fact that I had to write a critical review early on was a bit overwhelming, but I learnt to adapt. I now feel like 'I can definitely do this'."

Faith Adiorho, Nigeria
MSc Global Development student

Find out more about Faith: uom.link/gdi-pg-faith

Digital Development MSc

12 MONTHS (FULL-TIME)

24 MONTHS (PART-TIME)

MSc Digital Development will train you to become a digital development champion with the necessary technical and contextual skills to lead digital development and Information and Communications Technology for Development (ICT4D) programmes and projects to completion.

In recent years there has been - and continues to be - a massive expansion in the number of digital development projects in developing and transitional economies. With a skills shortage resulting in a high project failure rate, this course satisfies the pressing need for digital development champions.



Scan to discover this course online or use the link: uom.link/gdi-pg-digital-development

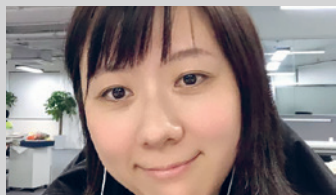


Watch a video from our recent Development Informatics field trip to Cape Town: uom.link/gdi-pg-fieltrip

ALUMNI STORY

International alumna Min Wu chose to study Digital Development at the GDI because of the quality of teaching and the reputation amongst employers.

Read Min's story: uom.link/gdi-min-wu



STUDENT QUOTE

"To expand my career in the field of international development and business in developing countries, I was looking for a postgraduate programme. In this field, Professor Richard Heeks at The University of Manchester is one of the most famous professors in the world. That's why I chose this programme."

Tomoya Ichikawa, Japan
MSc Digital Development student

Find out more about Tomoya here: uom.link/gdi-pg-tomoya



Management and Implementation of Development Projects MSc

12 MONTHS (FULL-TIME)

24 MONTHS (PART-TIME)

This master's is taught by the GDI, Alliance Manchester Business School and the School of Mechanical, Aerospace and Civil Engineering. It combines the strength of the disciplinary excellence of each, exploring international development management focused on both infrastructure capacity and social and economic development.

Studying this master's, you will be provided with the analytical skills necessary to propose, plan, implement, manage and evaluate development projects.



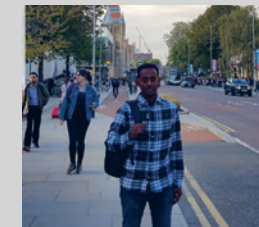
Scan to discover this course online or use the link: uom.link/gdi-pg-dev-projects

ALUMNI STORY

Dawud is now employed as Senior Programme Development Manager, supporting his home country Ethiopia through social and political transformations.

"Lectures are supported by project works, group assignments and international trips. Such activities helped me gain deeper understanding of the project management field."

Read Dawud's story: uom.link/gdi-pg-dawud



STUDENT QUOTE

"I decided to study this course as its career opportunities are in line with my career plan, and living in such an inclusive and energetic city is absolutely amazing."

Shiyu Deng, China
MSc Management and Implementation of Developing Projects student

Find out more about Shiyu here: uom.link/gdi-pg-shiyu



Management and Information Systems: Change and Development MSc

ON-CAMPUS: 12 MONTHS (FULL-TIME); 24 MONTHS (PART-TIME)

DISTANCE LEARNING: 18-60 MONTHS (FLEXIBLE; OPTIONAL SEMESTER ON-CAMPUS)

COURSE LIST:

- Management and Information Systems: Change and Development MSc
- Management and Information Systems: Change and Development (Distance Learning) MSc

This MSc trains 'hybrid managers' capable of understanding the job of management in its organisational setting, as well as the role, management and jargon of information, information systems and information technology.



Explore these courses online: uom.link/gdi-masters



Are you a working professional looking for a part-time course to fit around your work? For more information on our online and blended courses, please see page 60.

ALUMNI STORY

Avinash came from a hybrid manager background focusing on both technical as well as managerial responsibilities before deciding to study this MSc.

Read Avinash's story: uom.link/gdi-pg-avinash



STUDENT QUOTE

"Coming from a technical background, I've always been more interested in the non-technical managerial profiled roles. This course in Management and Information Systems will boost up my profile with an all-around qualification giving me an edge and helping achieve my planned goals."

Monica Manjoosha, India MSc Management and Information Systems: Change and Development student

Find out more about Monica: uom.link/gdi-pg-monica



Organisational Change and Development MSc

12 MONTHS (FULL-TIME)

24 MONTHS (PART-TIME)

This MSc aims to develop graduates who can contribute to organisational change and development initiatives or activities in developing and transitional economies. It will equip you with the skills to contribute positively to organisationally based initiatives through effective diagnosis, planning, management and implementation of organisational change and development interventions.



Scan to discover this course online or use the link: uom.link/gdi-pg-org-change



ALUMNI STORY

Having chosen the GDI due to its reputation, Irene graduated from Organisational Change and Development MSc in 2009 and is now employed as Workplace Inclusion Strategist.

"I was able to develop strategic thinking skills which I did not realise until I had to utilise them. Manchester opens you to a global perspective which gives you an edge in the world. It is the best decision any person could make!"

Read Irene's story: uom.link/gdi-pg-irene



STUDENT QUOTE

"I became interested in how organisational changes can be best achieved and conducted because of many organisations moving from office to remote work due to the pandemic. Being able to discuss the topic of organisational change with others as interested in it and getting to share our experience has been the highlight of my course so far."

Julia Gerda Sokk, Estonia MSc Organisational Change and Development student

Find out more about Julia: uom.link/gdi-pg-julia



GEOGRAPHY

Manchester is home to one of the UK's most dynamic groups of geographical researchers. We're committed to making significant contributions to some of the most important intellectual and practical issues facing society and the environment, and we bring all this passion and knowledge to our teaching.

Our impressive heritage paired with a contemporary outlook creates the perfect environment to take the next steps in your academic career. You'll be inspired by experienced academics and benefit from strong links with industry.

Our wide range of course units and the flexible nature of our programmes mean you'll graduate with a diverse knowledge base, transferable skills and honed specialisms.

Home to world-class academics and the prestigious Manchester Urban Institute, you will benefit from research-led teaching and our inter-disciplinary links and opportunities.



Scan to discover Geography at Manchester or use the link: uom.link/geog-pg



WHY MANCHESTER?



Top 10

Study at one of the top 10 universities for Geography in the UK

(QS World University Rankings by Subject 2023)



Real-world impact

Study at one of the world's leading institutions for sustainable development

(THE University Impact Rankings 2023)



Proud heritage

Be part of our proud heritage – Geography has been taught here for more than 125 years



Facilities

We are one of Europe's best-equipped universities for Geography, with numerous laboratories, including the main teaching laboratory, microscopy laboratory, and sediments and project laboratories



Explore our facilities: uom.link/geog-pg-facilities

GRADUATE DESTINATIONS

Geography graduates have particularly great employment prospects and go on to shape environmental policy through positions in the public and private sectors, including careers in:

- Data analysis
- Consultancy
- Planning
- Community engagement
- Environmental/ ecological management
- Surveying

TOP EMPLOYERS INCLUDE:

- DEFRA
- Department of Land and Surveys
- The Environment Agency
- Natural England
- The Environment Partnership
- The Organic Soil Association
- The UK Atomic Energy Authority
- United Nations
- UNEP
- Yorkshire Water

Where will your degree take you?



Find out more: uom.link/geog-pg-careers





STUDENT SPOTLIGHT

SAM'S MANCHESTER

Sam decided to stay at the University after his undergraduate degree from the Department of Geography, choosing to complete a master's in Environmental Monitoring, Modelling and Reconstruction. He chose Manchester due to its strong international reputation as well as the quality of support and learning available to him.

Sam particularly enjoyed the sense of community and camaraderie from his cohort and the strong relationships with professors, making his experience at Manchester invaluable.

Learn more about Sam's experience here: uom.link/geog-pg-sam

ACADEMIC SPOTLIGHT

MEET THE ACADEMICS

At our Geography department, you'll be learning from experts in their fields with a passion to make significant contributions to the global challenges facing society and our environment today.



PROF KEVIN WARD

Professor of Human Geography

Kevin is a Professor of Human Geography at Manchester and Director of the Manchester Urban Institute. As a geographer with interests in the financing and governance of cities, he describes Manchester as the right vintage for his work.

"What comes with the status of being a good professor includes supporting early career people ... I think we should be doing more as professors."

Find out more about Kevin: uom.link/geog-pg-kevin



DR POLYANNA BISPO

Lecturer in Physical Geography

Growing up in Brazil and seeing the Amazon being destroyed first-hand, Polyanna went into research to help prevent this. She now works as Lecturer for Physical Geography as well as lead for Equality, Diversity and Inclusion at the Department of Geography.

"Our department is a very interdisciplinary environment and recognised worldwide for the quality of research and teaching. It's a vibrant environment and all the colleagues are very supportive and friendly."

Find out more about Polyanna: uom.link/geog-pg-polyanna



DR JOE BLAKEY

Lecturer in Human Geography

Joe is an environmental and political geographer and Lecturer in Human Geography at Manchester.

As a Mancunian through and through, Joe's research challenges the assertion that the UK's carbon footprint is stabilising.

"There are lots of different ways of cutting the cake of global carbon emissions. The problem is, we typically count our carbon footprints in just one way."

Find out more about Joe: uom.link/geog-pg-joe

Climate Change: Science, Society and Solutions MSc

12 MONTHS (FULL-TIME)

24 MONTHS (PART-TIME)

Our climate is changing. How we mitigate climate change and adapt to live in a changing climate are fundamental questions for society. Delivered from the unique vantage point of the world's first industrialised city, the MSc Climate Change: Science, Society and Solutions has been designed to equip you with the knowledge and skills you will need to help respond to the challenges of human-induced climate change.

This interdisciplinary programme is led by the Department of Geography, with contributions from around the University, including the Tyndall Centre for Climate Change Research. It will develop your understanding of the options for tackling climate change, the societal and political contexts in which they reside, and the scientific background to the problem itself.

The programme is ideal for those who want to pursue a career in: local, national or international climate policy; businesses and industries focussed on climate change innovations or corporate social responsibility (CSR); non-governmental organisations (NGOs) campaigning or lobbying for action on climate change issues; or in academia with a focus on climate change research. You will have the freedom to specialise according to your interests and ambitions through drawing upon an array of elective units.



Scan to discover MSc Climate Change or use the link: uom.link/geog-pg-cc

ACADEMIC SPOTLIGHT

Dr Rob Bellamy is Lecturer in Climate and Society and Programme Director for MSc in Climate Change: Science, Society and Solutions.

Rob's research focuses on the social science of climate, nature, and technology, exploring how climate change and responses to it are perceived, evaluated, and governed. Rob is currently Co-Investigator and Lead on Responsible Innovation for the UK's national Carbon Dioxide Removal Research Hub.

"I'm thrilled to be leading this exciting programme that aims to empower students with an applied and critical understanding of the options for tackling one of the biggest challenges of our time."

Learn more about Rob here: uom.link/geog-pg-rob



Environmental Governance MSc

12 MONTHS (FULL-TIME)

24 MONTHS (PART-TIME)

This MSc addresses the key environmental challenges of our time, exploring the connections between environmental governance and policies, and the production, distribution and consumption of resources. It will develop your ability to apply sophisticated, critical and interdisciplinary sustainability and environmental theories at multiple scales and in different geographical contexts.

The course is ideal for pursuing a career in environmental regulation and management, those wishing to conduct further research on these topics, and environmental professionals wishing to deepen their knowledge.



Scan to discover MSc Environmental Governance or use the link: uom.link/geog-pg-env-gov



Our Environmental Governance graduates are highly employable in what is an expanding sector. Find out more about where our alumni are now. Watch video: uom.link/geog-pg-alumni

ALUMNI STORY

Maasai tribe member Valentin Olyang'Iri from Tanzania is working to protect the habitat that he calls home.

"I was so impressed by the talent and commitment among the University's staff. I had the opportunity to learn from world-class lecturers with different academic and ideological points of view."

Read Valentin's story: uom.link/geog-pg-valentin

STUDENT QUOTE

"I did an internal placement at the University in conjunction with the WWF, working with a lecturer to develop a report. I think it has boosted my employability as it is a clear example of my research skills in practice for a client and is publicly available for potential employers to access. Also, it has developed my capacity as a co-author which is useful for employment."

Hannah Charles
MSc Environmental Governance student

Environmental Monitoring, Modelling and Reconstruction MSc

12 MONTHS (FULL-TIME)

Concerns over the human impact on the environment have stimulated demand from governments and industry for the monitoring, analysis and modelling of natural processes in environmental systems. This MSc focuses on analysing and understanding past, present, and future dynamic environments.

Through this programme, you will gain a variety of field, lab, data analysis and interpretation skills, providing you with the knowledge and skills for a career in environmental consultancy or management, or for further research in the environmental sciences.



Scan to discover MSc Environmental Monitoring, Modelling and Reconstruction or use the link: uom.link/geog-pg-emmr

24 MONTHS (PART-TIME)

Urban Studies MSc

12 MONTHS (FULL-TIME)

As the proportion of the world's population living in urban areas continues to grow, so do the challenges to secure an inclusive, just and sustainable set of futures.

These challenges ask questions of traditional academic disciplines, such as anthropology, architecture, business studies, economics, geography, history, planning, political science and sociology. None are able to solve these challenges on their own. Instead, drawing upon concepts and methods from across these disciplines, the MSc in Urban Studies provides a sophisticated analysis and understanding of urbanisation.



Scan to discover MSc Urban Studies or use the link: uom.link/geog-pg-urban-studies

ALUMNI STORY

Kathryn Hooley studied BSc Geography, followed by MSc Environmental Monitoring, Modelling and Reconstruction at Manchester. She graduated with her master's in 2018 and is now a Graduate Consultant in Flood Risk and Hydrology at Arcadis, a global consultancy firm.

"I was particularly drawn to the University because the geography course was really flexible, allowing me to pick the course units that I wanted to study. My courses developed my transferrable skills, like report writing or analytical skills, as well as technical knowledge, especially around rivers, catchment hydrology, flooding and climate change."

Learn more about Kathryn: uom.link/geog-pg-kathryn



This interdisciplinary programme brings together a diverse set of analytic tools, research methods, and theories to better understand how cities are confronting these challenges.

The compulsory course units are Critical Issues in Urban Studies, Researching the City, Policy and Politics in Action in Greater Manchester and Global Urban Futures. In addition to these compulsory units, you will choose complementary optional course units from a range of disciplines.

ACADEMIC SPOTLIGHT

Dr Caitlin Henry, Co-Programme Director for MSc Urban Studies.

Caitlin is an urban and feminist geographer with interests in feminist political economy and health geography. Her research focuses on how crises – economic, social, political, and health – impact workers, cities, welfare states, and social life. Her current research focuses on two areas: the many impacts of health care restructuring in western welfare states and the geographies of end of life care work in US and UK cities.



Geographical Information Science MSc

12 MONTHS (FULL-TIME)

24 MONTHS (PART-TIME)

Geographical information technologies are increasingly used in everyday life, such as Google Earth and geosocial networking. This MSc, therefore, focuses on the multidisciplinary science concerned with the development and application of geographical information science technologies.

This course will enable you to develop fundamental skills and in-depth knowledge of key application areas. What's more, we offer research-led teaching and a range of extra-curricular activities designed to deepen and enhance your learning experience.



Scan to discover this course or use the link: uom.link/geog-pg-gis



Our Geographical Information Science students have particularly great employment prospects. Find out more about where our alumni are now. Watch video: uom.link/geog-pg-alumni



ALUMNI STORY

Shreya Mukherjee, GIS alumni from India, currently works with a team of Specialised Professional Geographers and GIS Technicians, helping government and authorities with major nationwide infrastructure developmental projects.

Read Shreya's story: uom.link/geog-pg-shreya

STUDENT QUOTE

"I've enjoyed learning new GIS skills - I only had very basic skills before I started but now, I'm much more confident."

Beth Jones
MSc Geographic Information Science student



Green Infrastructure MSc

12 MONTHS (FULL-TIME)

This innovative MSc aligns expertise from Geography with that from Landscape and Environmental Planning, being the first of its kind to bring together the theory, practice and evaluation of Green Infrastructure. Being taught by nationally and internationally recognised experts in Green Infrastructure, this course provides the foundations to understand why we need Green Infrastructure, alongside an understanding of how we transition from design to implementation.

What's more, Manchester, and the North West of England, offers an excellent real-world 'laboratory' to test alternative approaches to Green Infrastructure, making the University the perfect place to study this master's.



Scan to discover Green Infrastructure MSc or use the link: uom.link/geog-pg-green-infrastructure



Watch what our current students think about this master's: uom.link/geog-pg-gi-video

STUDENT QUOTE

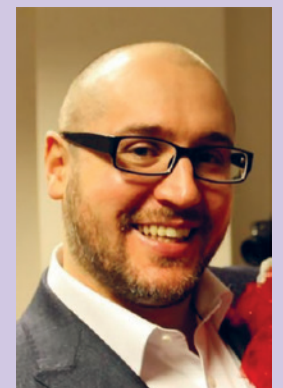
"It has been great to meet like-minded people on the course. I particularly enjoyed doing a spatial ecology module, which involved learning to code using R which was a skill that was completely new to me."

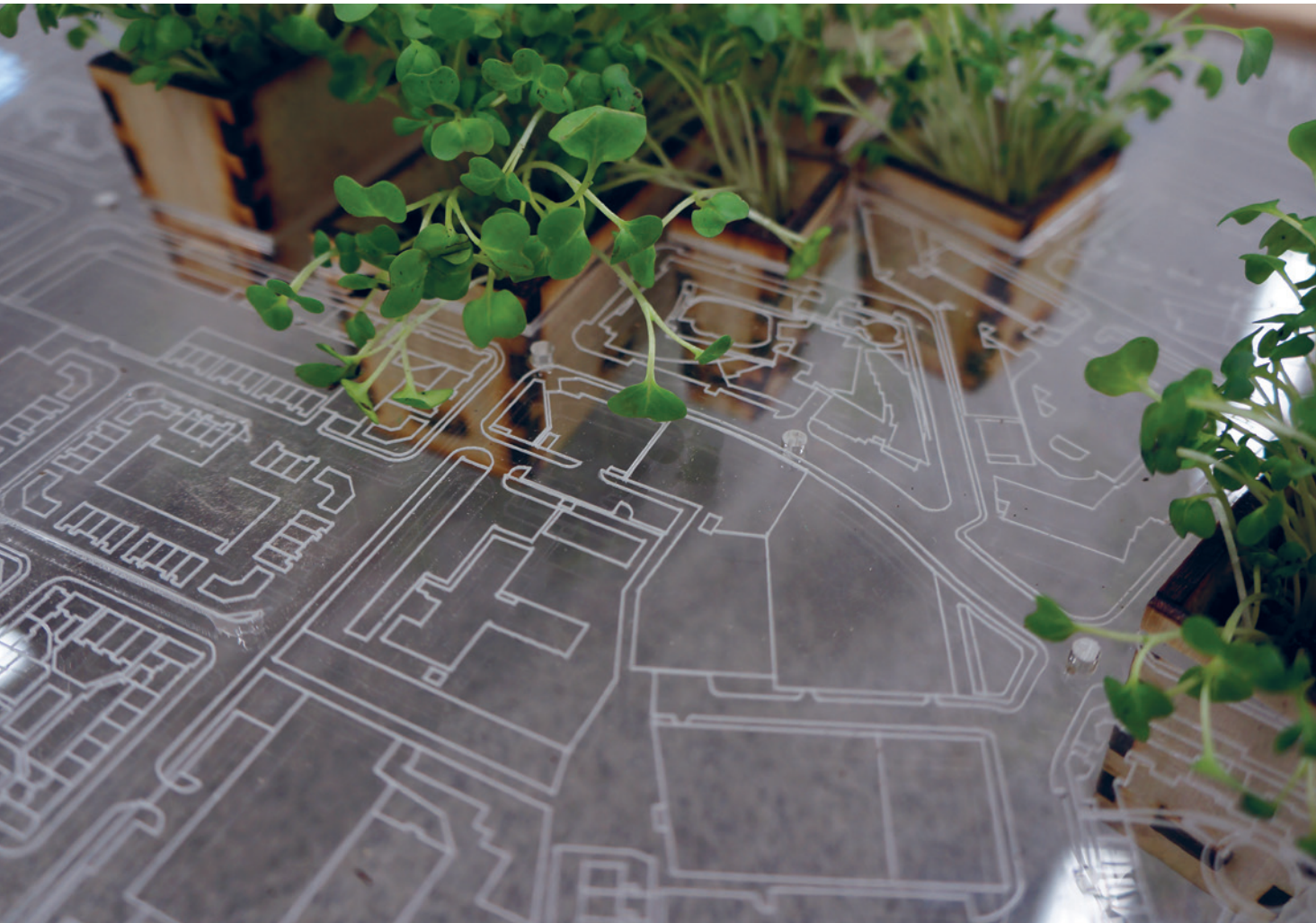
Hannah Ward,
MSc Green Infrastructure student

ACADEMIC SPOTLIGHT

James Rothwell, Professor of Physical Geography at Manchester and Programme Director for MSc Green Infrastructure.

"This exciting MSc brings together a blend of green infrastructure theory, policy and real-world practice. Students will engage with varied types of learning, including exposure to real-life case studies of green infrastructure through dedicated fieldwork."





PLANNING AND ENVIRONMENTAL MANAGEMENT

Join one of the biggest departments covering planning, environmental management and real estate in the UK and take the next steps to a successful future.

You'll learn from inspiring academics, develop your practical skills using modern facilities and equipment, and work with an interdisciplinary community of like-minded peers, motivated to create change and make a difference to the world we live in.

Be part of a friendly academic community where close staff-student relationships mean we work together as a team, and benefit from each other's knowledge and experience.



Join us in our drive to shape the world of tomorrow: uom.link/pem-pg



WHY MANCHESTER?



Officially recognised

Courses accredited by the Institute of Environmental Management and Assessment, the Royal Town Planning Institute and the Royal Institution of Chartered Surveyors



Student body

Be part of one of the largest planning and real estate departments in the UK



Top 10

Join the UK university ranked 9th for Town and Country Planning and Landscape Design

(Complete University Guide UK Subject Rankings 2023)



Research excellence

Ranked 5th for research excellence

(Research Excellence Framework 2021)



Proud Heritage

Be part of our proud heritage – planning has been taught here for more than 70 years



Facilities

Our students have access to several support facilities, such as the urban design studio and the Manchester Urban Design Lab (MUD-Lab) and the modelmaking workshop.



Explore our facilities: uom.link/pem-pg-facilities

GRADUATE DESTINATIONS

Our Planning and Environmental Management courses will equip you with the skills for successful careers in areas such as:

- Environmental management and consultancy
- Urban planning and design
- Urban and regional development policy
- Real estate development
- Central and local governments
- Energy and water
- Non-governmental organisations
- Research

TOP EMPLOYERS INCLUDE:

- AECOM
- Arup
- BP
- EDF Energy
- Jacobs
- The Environment Agency
- Turley
- Rolls-Royce
- Cushman & Wakefield
- Deloitte
- Savills
- Transport for London

Where will your degree take you?



Find out more: uom.link/pem-pg-careers





STUDENT SPOTLIGHT

TOM'S MANCHESTER

Tom, from Uganda, chose to study at Manchester as he believes in the importance for a nation to strive to attain a better income status to develop sustainably. With key readings on environmental management having been authored by Manchester academics, Tom saw the University as a perfect place to start.

Tom describes Manchester as "home away from home" and felt truly settled in with the help of events and activities run at the University.

Learn more about Tom's experience: uom.link/pem-pg-tom



ACADEMIC SPOTLIGHT

MEET THE ACADEMICS

Our Planning and Environmental Management department consists of a strong expert team, driven to impact upon urban development, sustainable environments and property markets.



PROF ANUPAM NANDA

Professor of Urban Economics and Real Estate

As Professor of Urban Economics and Real Estate and Deputy Head of our Planning and Environmental Management Department here at Manchester, Anupam has been with the University since 2019 and is a true expert in his field.

"As an economist, I look for imperfections and inefficiencies in the market to analyse and understand how those shape our lives, and the property market is a great laboratory to test various economic theories."

Find out more about Anupam: uom.link/pem-pg-anupam



PROF CECILIA WONG

Professor of Spatial Planning

Cecilia is Professor of Spatial Planning at Manchester and the Director of the Spatial Policy and Analysis Lab within the Manchester Urban Institute. Having joined the University in 1993, one of her favourite things about her work is training the next generations of planners.

"Manchester, which I call a 'can-do' city, is an ideal laboratory for anyone who is interested in learning about spatial planning and urban development, and our Department provides a vibrant and welcoming place for students."

Find out more about Cecilia: uom.link/pem-pg-cecilia



DR IAN MELL

Reader in Environmental and Landscape Planning

Ian, Reader in Environmental and Landscape Planning, has been at the forefront of researching Green Infrastructure. Having worked across a broad spectrum of jobs before joining the University, Ian is keen on embedding employability and professional responsibility across the department.

"I, and colleagues, take pride in training graduates who will be aware of their role in the workplace and the privileged position they have in shaping the future of our cities."

Find out more about Ian: uom.link/pem-pg-ian

Data Science (Urban Analytics) MSc

12 MONTHS (FULL-TIME)

With the global demand for data scientist talent ever-growing, this innovative, transdisciplinary MSc in Data Science is an opportunity for graduates from a broad range of disciplines to develop data science skills applied to urban problems. Run jointly with the School of Social Sciences, the Alliance Manchester Business School, the School of Engineering and the School of Natural Sciences, we aim to help you develop into an agile, skilled data scientist, adept at working in a variety of settings and be able to meet the challenges of interdisciplinary teamwork.



FIND OUT MORE AND APPLY

Applications for this course are handled by our postgraduate taught admissions team in the School of Social Sciences.

Email: pg-soss@manchester.ac.uk
Apply online: uom.link/seed-pg-apply



Scan to discover MSc Data Science or use the link:
uom.link/pem-pg-data-science

ACADEMIC SPOTLIGHT

Nuno Pinto is the MSc Data Science Urban Analytics pathway lead. Nuno's research focuses on the use of quantitative methods and data to support planning, transport and development processes. This research is part of the curricula in courses such as Applied Spatial Analysis and Decision Support Systems in Planning.

The pathway brings together competences and skills on using data with planning theories and methods for dealing with urban related problems, which can be found in the Smart Cities policy agenda and the Urban Analytics approach to urban planning and management.

STUDENT QUOTE

"As an architecture student, the MSc Data Science (Urban Analytics) programme offered me a great chance to extend my background in the quantitative approach towards urban studies, as well as strengthen my prospects in the extensive data related job market. The core modules are exceptionally practical and readily applicable to academic research and business problems at work."

Yiqing Dai,
MSc Data Science (Urban Analytics) student

Environmental Impact Assessment and Management MSc

12 MONTHS (FULL-TIME)

24 MONTHS (PART-TIME)

This MSc will prepare you for professional practice in environmental assessment at both project and strategic levels. You will gain a thorough grounding in environmental assessment procedures and practice, and an introduction to the rapidly growing environmental management field.

This course is accredited by the Institute of Environmental Management and Assessment (IEMA), the Royal Institution of Chartered Surveyors (RICS) and the Royal Town Planning Institute (RTPI).



Scan to discover MSc Environmental Impact Assessment and Management or use the link:
uom.link/pem-pg-eiam

ALUMNI STORY

Dan Johnston, Environmental Impact Assessment and Management graduate from 2006, was promoted immediately after graduating from the course, taking on greater responsibility for larger-scale EIA projects.

Learn more about Dan:
uom.link/pem-pg-dan

STUDENT QUOTE

"I always wanted to develop a career in the environmental sector so that I could contribute towards the growing challenges of climate change and environmental degradation. The University has been at the forefront to the implementation of the Sustainable Development Goals and has recently been ranked first in the THE Impact Rankings. Therefore, I preferred Manchester over any institution to study this course."

Muhammad Hashim Latif Malik, Pakistan
MSc Environmental Impact Assessment and Management student



Find out more about Hashim here: uom.link/pem-pg-hashim

Global Urban Development and Planning MSc

12 MONTHS (FULL-TIME)

24 MONTHS (PART-TIME)

This MSc will improve your understanding of global urban development issues, particularly relating to cities of the Global South. It will also suit development professionals seeking to acquire new expertise in dealing with urban issues, and social development specialists working in the voluntary, private or public sector. This course is accredited by the Royal Town Planning Institute (RTPI), meaning that students wishing to obtain a full RTPI accreditation can do so by taking a specific combination of relevant core and optional course units.



Scan to discover MSc Global Urban Development and Planning or use the link: uom.link/pem-pg-gudp



Be inspired by MSc Global Urban Development and Planning alumni Andrew Amara, from Uganda, and his amazing work since graduating in 2013. Watch video: uom.link/pem-pg-andrew

ALUMNI STORY

Alumna Keisha Maloney from Toronto, Canada, shares her inspiration to study this course and how it aided her career development.

"I chose this course in particular because of the interdepartmental and interdisciplinary aspect. Being able to learn the basics of urban planning for the first time, while in the constructs of international development allowed me to challenge my perception of planning beyond "the West."



Read Keisha's story: uom.link/pem-pg-keisha

Planning MSc

12 MONTHS (FULL-TIME)

24 MONTHS (PART-TIME)

This MSc will provide you with the range of skills necessary for a career in urban or environmental planning and development, either in the public or private sector. It will provide you with the core knowledge, competencies and skills required to become a chartered planning and development professional and a member of the Royal Town Planning Institute and/or the Royal Institution of Chartered Surveyors.

The course will provide you with core professional knowledge and skills in planning procedures, theory and ethics, urban development and spatial analysis. You will also gain experience of planning and development processes through project work, providing a practical grounding for your future career.



Scan to discover MSc Planning or use the link: uom.link/pem-pg-planning



Hear from our Planning graduates and find out how the course has helped their career development. Watch video: uom.link/pem-pg-alumni

ALUMNI STORY

We caught up with Planning alum David Rudlin who graduated in Planning from Manchester in 1984 and is Urban Design Director of BDP, a leading planning and design consultancy.

"Planning is a fantastic, generalist degree. It tells you about everything – from how traffic works, to how sewage works, to how towns are planned. And university was the thing that shaped me."



Learn more about David's career since graduating here: uom.link/pem-pg-david

Real Estate Asset Management MSc

12 MONTHS (FULL-TIME)

24 MONTHS (PART-TIME)

This master's will enable you to pursue a successful career in real estate asset and investment management. Accredited by the RICS, it provides a solid grounding in real estate theory and practice from the perspectives of investor, developer, occupier and global society. This course is designed to be highly relevant to future employment in the real estate field, with a strong focus on developing commercial awareness and understanding of global issues.

What's more, optional course units allow you to develop deeper knowledge of real estate in areas of particular interest to you, and a residential field trip to London is an integral part of the course, allowing you to put your learnings into practice.



Scan to discover MSc Real Estate Asset Management or use the link: uom.link/pem-pg-ream

ALUMNI STORY

MSc Real Estate Asset Management graduate, Patrick Mooney, talks about why he chose this course at Manchester and how it supported his career path.

"The University of Manchester is one of the only Russell Group Universities to offer a real estate master's course. As most of the big real estate companies have offices in Manchester, I felt I could gain good work experience whilst studying. Completing my master's enabled me to sit my Royal Institution of Chartered Surveyors (RICS) Assessment of Professional Competence to become qualified as a chartered surveyor."

Read Patrick's story: uom.link/pem-pg-patrick



Real Estate Development MSc

12 MONTHS (FULL-TIME)

24 MONTHS (PART-TIME)

This course will develop your commercial awareness while building a technical real estate knowledge base and gaining a global perspective on the challenges facing the real estate profession. Accredited by the RICS, this MSc will allow you to gain the necessary understanding to pursue a successful career in real estate development, in the UK or internationally.



Scan to discover MSc Real Estate Development or use the link: uom.link/pem-pg-red



Are you a working professional looking for a part-time course to fit around your work? Have a look at our online and blended courses and find the master's that fits you. For more information, see page 60

ALUMNI STORY

Thomas Rae graduated from the University in 2019 and has since then been working as Graduate Surveyor for Cushman & Wakefield.

"After graduating, I managed to secure some work experience in New York City, prior to starting my graduate role in London."

The skills I developed whilst at Manchester have provided a great foundation of knowledge and understanding to build on.

I think the dual accredited aspect of the course provides a holistic view of the industry and informs students of the variety of disciplines available to specialise in."



STUDENT QUOTE

"I was able to enhance my work experience by undertaking a professional placement module which tied my postgraduate course with my professional skills. I am confident that the new skills learned throughout my postgraduate course will help shape my future career."

Roisin Carey, Ireland
MSc Real Estate Development student

Find out more about Roisin here: uom.link/pem-pg-roisin

Urban Design and International Planning MSc

12 MONTHS (FULL-TIME)

24 MONTHS (PART-TIME)

This MSc provides a specialist understanding of the relationship between urban design and planning by focusing on issues that are of international significance.

Fully accredited by the Royal Town Planning Institute (RTPI), it will provide you with the core knowledge and competencies needed to become a chartered planner and specialise in urban design and international planning.

By allowing you to tailor the course to your professional interests by choosing from numerous optional course units, this MSc will provide you with the practical skills to deliver comprehensive urban design proposals across multiple scales and within differing international contexts.



Scan to discover MSc Urban Design and International Planning or use the link: uom.link/pem-pg-udip

ALUMNI STORY

Jo Gregory, MSc Urban Design and International Planning graduate, talks about her experience studying the course part-time and how it benefitted her career development.



"My highlight of the course has been growing in skill and confidence in an area of work and study that I really enjoy. The design-based modules which took place in the studio were my favourite as I got to put into practice what I had learnt in lectures."

Read Jo's story: uom.link/pem-pg-jo



MUD-LAB

MSc Urban Design and International Planning students have full access to the Manchester Urban Design Lab (MUD-Lab), including its wide range of physical and digital resources.



Learn more about the MUD-Lab: uom.link/pem-pg-mud-lab

Urban Regeneration and Development MSc

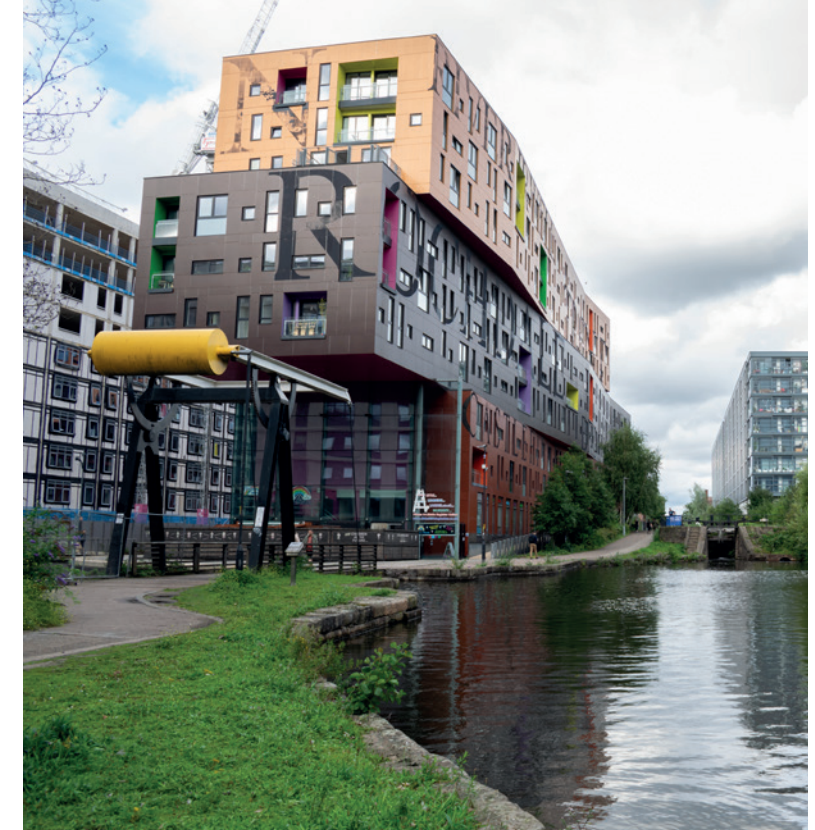
12 MONTHS (FULL-TIME)

24 MONTHS (PART-TIME)

This course allows students to develop core knowledge and skills related to the regeneration and development of cities. You will gain experience of how to identify urban development opportunities and challenges, and devise appropriate regeneration solutions.

You will receive a thorough grounding for a career in urban development, regeneration or planning, developing professional skills through project work. You will have the flexibility to develop a specialism by choosing from a range of optional course units, including fieldwork opportunities in the UK and abroad.

Students completing the relevant modules can go on to qualify after graduation as chartered members of one or both of the professional bodies which accredit the programme, the Royal Town Planning Institute and the Royal Institution of Chartered Surveyors.



Scan to discover MSc Urban Regeneration and Development or use the link: uom.link/pem-pg-urd

ALUMNI STORY

At Manchester, we're proud to be home to a variety of talented graduates, such as Robyn Skerratt, who was named Royal Town Planning Institute (RTPI) Young Planner of the Year for 2020.



Robyn, who graduated from Planning in 2010, currently works for the Foreign, Commonwealth and Development Office and, among other achievements across numerous planning roles, oversaw the delivery of the UK's first Voluntary National Review of progress towards the Sustainable Development Goals, presented to the United Nations in July 2019.

Find out more about Robyn and her exciting achievements: uom.link/pem-pg-robyn

Master's courses in Research Methods

12 MONTHS (FULL-TIME)

24 MONTHS (PART-TIME)

COURSE LIST:

- Research Methods with Planning and Environmental Management MSc
- Research Methods with Human Geography MSc
- Research Methods with International Development MSc
- Research Methods with Education MSc



These research-intensive master's courses are designed for those who wish to continue to PhD and/or are considering embarking on a career in research. They have a strong focus on developing research skills combined with further study in your chosen subject area. These courses are designed to comply with the

research training requirements for two ESRC scholarships as administered by the North West Social Science Doctoral Training Partnership (NWSSDTP) and are ideal if you want to apply for an ESRC scholarship through the NWSSDTP or a School of Environment, Education and Development scholarship.

FIND OUT MORE AND APPLY

Applications for these courses are handled by our postgraduate taught admissions team.

Email: seed.admissions@manchester.ac.uk

Apply online: uom.link/seed-pg-apply

ACADEMIC SPOTLIGHT

Pauline Prevett, academic lead for the Research Methods master's courses, has undertaken educational research in areas including inclusive education and understanding student decision-making, and has a keen interest in developing research methodologies and supporting students into research careers.

"You will study with current doctoral students in some of the sessions and so this degree helps provide a bridge into our doctoral community in the School. It is a great programme to choose if you are hoping to progress to a PhD or if you are wanting to embark on a career as a researcher."

Read more about Pauline's research and views on the master's course: uom.link/seed-pg-pauline

ALUMNI STORY

Clare Cummings completed her MSc in Research Methods with International Development in 2019. She is currently undertaking a PhD at Manchester's Global Development Institute. Her research focuses on public sector reform in Nigeria.

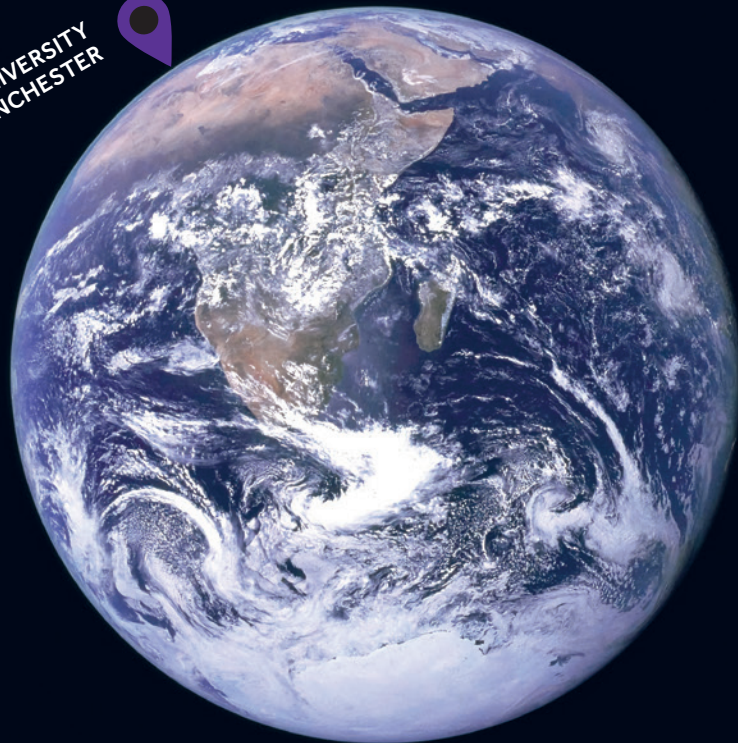
"It was a useful year in which I had the time to explore concepts and topics that I wouldn't have had time to learn about if I had begun my PhD straight away. I appreciated how flexible the University was in allowing me to access modules from different departments."

Read more about Clare's experience uom.link/seed-pg-clare



Study with us wherever you are

THE UNIVERSITY
OF MANCHESTER



Add prestige to your CV through our range of postgraduate and professional development courses which are delivered through 100% online learning. We offer the opportunity for students to transform their careers and develop the skills, knowledge and experience that will make employers sit up and listen. Our courses draw upon world-leading research and outstanding teaching from renowned academics. By studying with us, you will be provided with strong links to global industries and offered networking opportunities with other industry professionals across the globe.

Our online and blended learning allows flexible access to a leading university education wherever you are in the world. Throughout your studies, you'll have the chance to collaborate and network with like-minded professionals and tailor your studies around your lifestyle and commitments.

When you study with us you really are joining a thriving online community. There's a wide range of support, interactive resources and services which are available to ensure you have all the tools needed to succeed. Join The University of Manchester and become part of one of the top 2% universities in the world (QS World Rankings 2023).

MSC REAL ESTATE – ONLINE

Duration – part-time
over 2 years

SEPTEMBER INTAKE

This fast-track conversion course is accredited by the Royal Institution of Chartered Surveyors (RICS) and will enable you to develop the skills, knowledge and confidence needed to address contemporary challenges in the real estate sector whilst also examining legal and regulatory frameworks and property markets in a global context.

Watch the course video:
uom.link/seed-pg-re-blended

MASTER OF LEADERSHIP FOR DEVELOPMENT – ONLINE. A JOINT PARTNERSHIP DEGREE WITH THE UNIVERSITY OF MELBOURNE

Duration – part-time
over 2 years

SEPTEMBER INTAKE

Learn to lead with confidence and tackle contemporary development challenges, working in partnership to find sustainable solutions. This fully-online master's, delivered jointly with the University of Melbourne, focuses on the practical skills, global connections and collaborative outlook needed to make a real difference in the development world.

Watch the course video:
uom.link/seed-pg-lfd-blended

MA EDUCATIONAL LEADERSHIP IN PRACTICE - ONLINE

Duration - part-time
over 2 years

SEPTEMBER INTAKE

Education is constantly under pressure to conform to external requirements, especially with standardisation and teach-to-test sweeping the globe, steering policy and pressurising educational leaders. This course will build your intellectual and practical confidence in all interactions and allow you to take a critical and theoretical approach, using practice-based learning to enable you to create change in the workplace from day one.

Watch the course video:
uom.link/seed-pg-el-blended

STUDENT QUOTE

"This course is great, not only because it is taught online, but also provides a strong stepping stone for my career. In addition, it allows me to work around my current work schedule whilst providing one of the best RICS accredited degrees in the country."

Elizabeth Opeagbe
Investment Analyst
British Land

STUDENT QUOTE

"It is hard to only mention one thing as I am very excited about everything. Not only does it provide the theoretical background about the world's development challenges, but it is also future-focused and deliberate about making leaders that will serve in various fields of the sector."

Seopedi Baitsile
Founder, The Upcycle Project,
Gaborone, Botswana

STUDENT QUOTE

"The course offered me the opportunity to really reflect on my leadership practice, and work with some high-class, model class individuals within MIE. This has allowed me to progress, not only my academic abilities, but also my professional abilities as well."

Martin Lipton
Deputy Head Teacher
Phorms Campus Berlin Süd

Get in touch: studyonline@manchester.ac.uk

Apply: uom.link/seed-pg-blended-courses

How to apply

WHEN SHOULD I APPLY?

Applications for September 2024 entry are processed from October 2023 onwards.

You can apply before you complete your undergraduate studies – make sure you include your latest transcripts with your supporting documents.

We recommend that you apply as early as possible.



Specific entry requirements for all master's courses can be found on the course profile: uom.link/seed-pg-courses

STAGED ADMISSIONS

Please refer to the individual course webpage for details on Staged Admissions deadlines.

ENGLISH LANGUAGE REQUIREMENTS

If English is not your first language, you need to take an English language test to demonstrate your level of ability.



Find out more about our international and English language entry requirements here: uom.link/seed-pg-international



THE APPLICATION PROCESS STEP BY STEP

1

Visit your course here:

uom.link/seed-pg-courses

2

Check the latest fees and admissions information, including English language requirements

3

Complete and submit the online application form with any supporting documents

4

The final decision will be made by the Admissions Office, who will contact you directly

CAREERS

Your future

Manchester graduates are the most targeted by top UK employers (High Fliers 2023). Our award-winning Careers Service, exceptional alumni networks, volunteering opportunities and other industry-leading tools and services are here to help you launch your career beyond Manchester.

SUPPORT AND RESOURCES

- **Postgraduate career workshops:** learn about the range of careers available to you and how to find one that matches your skills and experience.
- **Professional careers consultants:** tailored, one-to-one support.
- **Career networks:** we have one of the largest alumni networks in the UK with thousands of professionals ready to answer your questions.
- **Online career resources for postgraduates:** we offer career planning advice and a dedicated website for master's students on academic careers.

INTERNATIONAL CAREERS COUNSELLING

We provide specialist resources, advice and events for international students to help with career planning and making the most of your time while studying at Manchester.

Get dedicated support with achieving your goals whether these are overseas or in the UK, where post-study work options include the Graduate Route and Start-up visas.

OPPORTUNITIES

- **Meet employers:** our close contacts and collaborations with companies and employers mean we have strong relationships with a wide variety of organisations. More than 600 recruiters engage with students each year through on-campus and online events.
- **Make connections:** connect with alumni, academics, employers and fellow postgraduates from all over the world. Whether it's networking with NGOs or meeting hundreds of other researchers at our annual PhD careers event, you'll be encouraged to stretch yourself and fulfil your potential.
- **Become part of our community:** get involved in volunteering initiatives or communicate your passion for your research via our public engagement programmes.
- **Shape your future:** access support and training to help you gain the skills, knowledge and attributes that will stay with you for the rest of your life.



Find out more:
uom.link/pg-careers

Access our support

We want you to enjoy Manchester postgraduate life to the fullest. That's why we offer you experienced, specialist support services to boost your academic and personal development.

If you're worried about any issues relating to your studies, money, health or wellbeing, you can get in touch with:

- Support staff in your academic School;
- ResLife teams who live in halls – your first port of call in university-managed accommodation;
- Students' Union independent professional advisers; trained university counsellors;
- Nightline – an anonymous telephone helpline run by students.

Find out more: uom.link/studentsupport

DISABILITY SUPPORT

If you have additional needs arising from a medical condition, physical or sensory disability, specific learning disability such as dyslexia, or mental health difficulty that affects your studies, we can support you. You can register with our Disability Advisory and Support Service as soon as you receive an offer, meaning we can support you in the lead-up to joining us and ensure everything you need is in place when you arrive.

Get in touch with our Disability Advisory and Support Service: www.dass.manchester.ac.uk

PERSONAL SAFETY

We have security services, systems and practical safety advice to help keep you and your property safe. You'll benefit from:

- CCTV and 24/7 security services across campus and university accommodation;
- Practical safety advice and support from university staff and Greater Manchester Police.

Find out more: uom.link/security



IMMIGRATION AND VISA ADVICE

Our Student Immigration Team provide information and advice for prospective and current Manchester students.

Email: visa@manchester.ac.uk

Find out more: uom.link/studentimmigration

CHILDCARE

Studying while caring for children can be a challenge. It's good to know that you've got local support.

- We have two nurseries for children aged between six months and five years – get in touch early to join a waiting list.
- Get involved with our Student Parents and Carers networks run by the Students' Union, who can also offer advice and support.

RELIGIOUS SUPPORT

If you want to find out about local faith organisations, explore issues of faith or discuss a problem with a member of your faith, you will find a diverse community of contacts available, including:

- A Chaplaincy Centre on campus for students of all faith or none;
- Muslim prayer facilities and multi-faith quiet areas;
- Jewish, Christian, Catholic, Muslim, Sikh and Hindu chaplains, plus faith advisers from many other faith communities;
- Student societies for most major religions at our Students' Union.

EQUALITY, DIVERSITY AND INCLUSION

You should enjoy a positive learning environment that is free from any discrimination, bullying, harassment or victimisation, where you'll be treated with respect and dignity irrespective of your age, disability, ethnicity, gender identity, marital status, nationality, religion or sexual orientation.



Watch a short film celebrating equality, diversity and inclusion at Manchester: uom.link/webelongfilm

Plan your finances



Cost of living

22% lower cost of living compared to London
(Numbeo)

COURSE FEES

Check the course profiles online to find out the latest fees.

Find out more: uom.link/masters-pgp

FUNDING AND SCHOLARSHIPS

Visit our funding database for the most up-to-date information on scholarships and bursaries available.

Find out more: uom.link/pg-funding

ESTIMATED LIVING COSTS 2024 / 25

Accommodation (self-catered)	£7,800
Meals (excluding meals out)	£2,600
Clothes (including warm clothing and footwear)	£570
Local Transport (excludes travelling home/ visiting friends)	£600
Other (e.g. mobile phone bill, socialising, laundry, photocopying and printing)	£2,900
Total	£14,470

These costs are based on 52 weeks and intended as a guide only



Accommodation

The University of Manchester has more university-owned accommodation than virtually any other university in the country with more than 8,000 places available, none further than 3 miles from the University campus.

A number of residences are reserved exclusively for postgraduates; in others, undergraduate and postgraduate students are grouped together.

Our halls of residence are self-contained communities where you can make friends and feel at home. Some have their own common rooms, study areas and bars, and all offer social activities for you to enjoy. Whether you choose a modern or a more traditional hall, you'll benefit from excellent security and onsite support from the ResLife team.

Our ResLife advisers are on hand in every hall, providing the help you need to settle into your new community, and they will

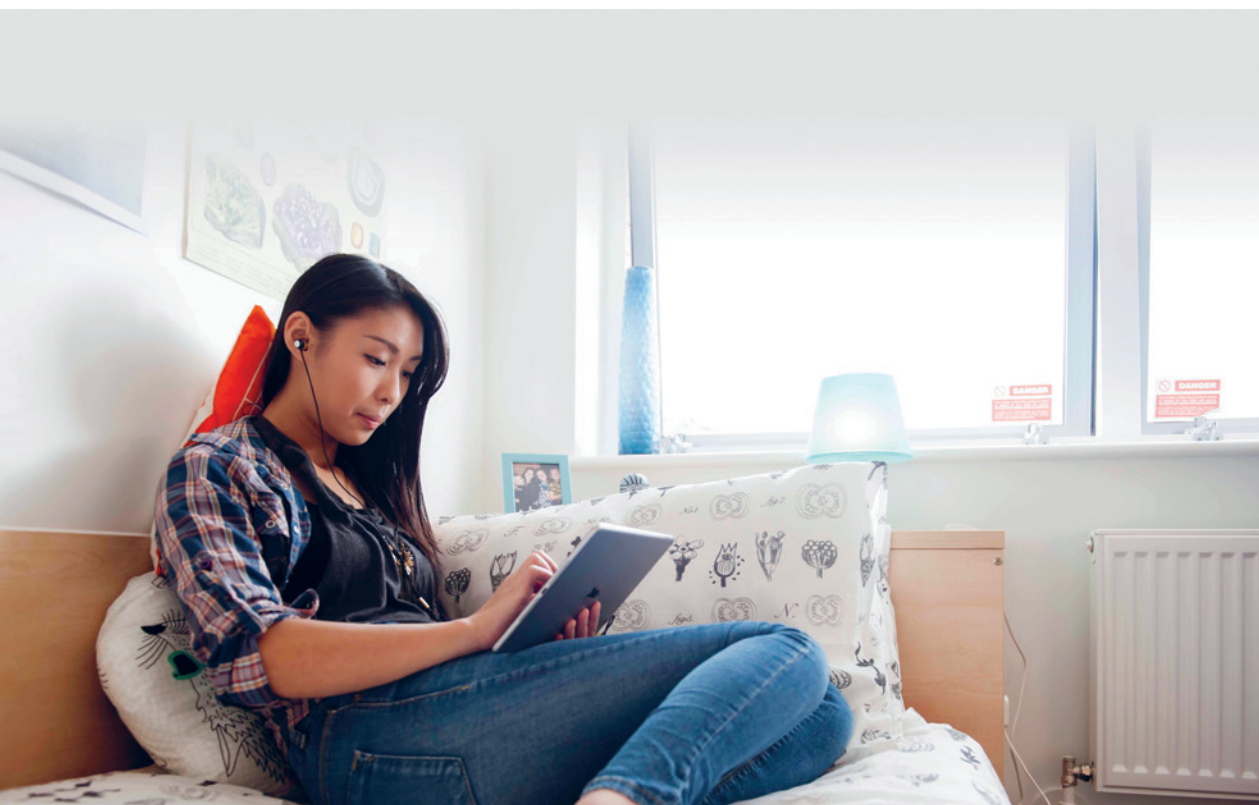
continue to look out for your wellbeing throughout your time living with us.

If you are based outside the EU, we guarantee you a place in university-managed accommodation if you come to Manchester unaccompanied and apply by 31 August in the year of entry.

For the latest information on our accommodation offering, including costs, visit the Accommodation Office website.



Find out more: uom.link/pg-accommodation



Let's talk

CONTACT US

Tel: +44 (0) 161 275 2814

(available for calls from Monday to Friday 10am-4pm GMT, excluding bank holidays)

Emails: seed.admissions@manchester.ac.uk

Admissions Office
School of Environment,
Education and Development
The University of Manchester
Ellen Wilkinson Building
Oxford Road
Manchester, M13 9PL
United Kingdom



Check our course listings for upcoming events:
uom.link/seed-pg-courses

DISCLAIMER

This brochure was produced in May 2023 for the 2024 intake. It has therefore been produced in advance of course starting dates. For this reason, course information, including course content, may be amended prior to your applying for a place on a course of study. There are a number of reasons why changes to course information and/or published term dates may need to be made prior to your applying for a place on a course.

These may include but are not limited to:

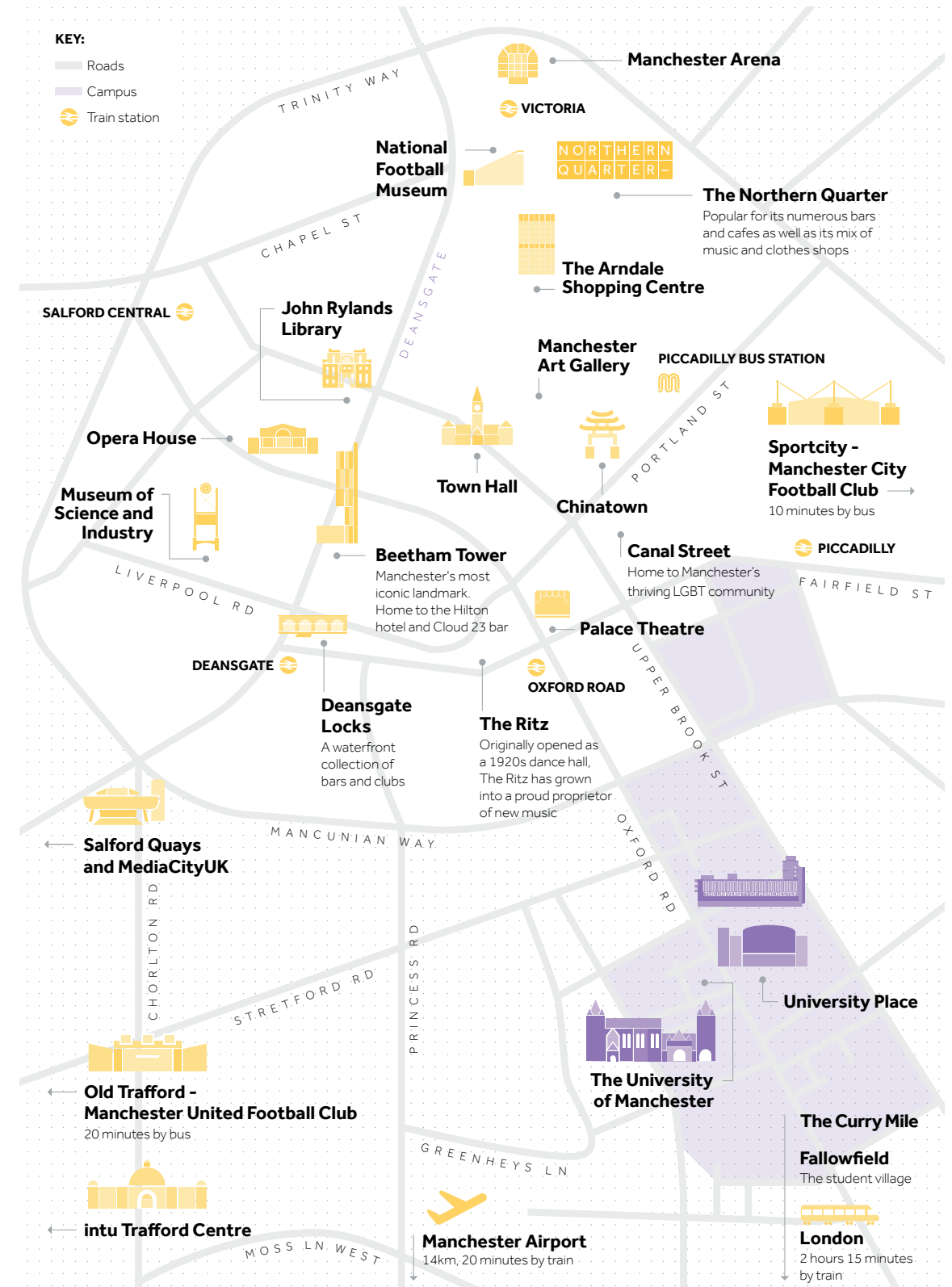
- the need to make reasonable changes to the content and teaching offered in relation to any course for operational

- and/or academic reasons;
- the withdrawal of courses due to insufficient numbers;
- a course not receiving the required accreditation;
- and/or interruption or loss of key services due to circumstances beyond our control, including fire, flood or other operational issues.

Prospective students are therefore reminded that they are responsible for ensuring, prior to applying to study at The University of Manchester, that they review up-to-date information by searching for the relevant course.

FIELDWORK DISCLAIMER

The School of Environment, Education and Development aim to run advertised fieldwork in the upcoming Academic Year and we very much hope that students will be able to enjoy the fieldwork experience in the usual way. The ability of fieldwork to proceed, and whether any changes to proposed fieldwork might be necessary, will remain subject to COVID-19 restrictions and based on the U.K. government guidelines. We will therefore assess on a regular basis the viability of any travel and fieldwork and communicate any decisions to our students at the earliest possible opportunity.



GET IN TOUCH



For up to date phone numbers and email addresses,
including admissions contacts, please visit our website:
uom.link/seed-pg-contact

School of Environment, Education and Development
Arthur Lewis Building
The University of Manchester
Oxford Road
Manchester
M13 9PL
United Kingdom

RC000797