

MANCHESTER
1824

The University of Manchester

SCHOOL OF ARTS,
LANGUAGES AND CULTURES

POSTGRADUATE COURSES



Where are they now?

Study arts, languages and cultures at Manchester and you will develop skills that will be vital in your future career across all our degree courses, whichever subject you choose. Our graduates go on to a diverse range of careers in creative industries and in the worlds of academia, finance, marketing, policy-making and more.



MAURA BYRNE

After graduating from the MA in Translation and Interpreting Studies, Maura returned to Spain to teach English at the British Council while she worked to establish herself as a translator. She spent two months as an English translation intern at the English Translation Service at the United Nations, New York. Maura says the knowledge that she acquired on the MA was a great help to her when it came to translating documents on a wide range of UN issues.

Read more about Maura's career so far here:
uom.link/pg-alumni-maura



HANQI LIAO

Hanqi recently started a role for the Department of Assessment and Emergency Management, at the National Disaster Reduction Centre of China. Her work involves conducting assessments in disaster loss, risk, reduction/relief, and carrying out disaster emergency response fieldwork. Hanqi says "it's fascinating to achieve my daily work goal in reducing the risk that disaster brings to alleviate peoples' suffering".

Read more about Hanqi's career so far here:
uom.link/pg-alumni-hanqi



REBECCA BAILEY

Rebecca is an Exhibitions Assistant for a fine art logistics company. Whilst studying for her MA Religions and Theology, she worked in various capacities at the Whitworth Art Gallery, Manchester Museum, John Rylands Library and the Ahmed Iqbal Ullah Education Trust (in Manchester Central Library). Rebecca says that these "experiences and qualifications helped me gain an immediate Curatorial and Collections internship at the Ben Uri Gallery in North London before I went into my current role".

Read more about Rebecca's career so far here:
uom.link/pg-alumni-rebecca



TOM COULT

Tom, a MusM Composition (Instrumental and Vocal) Graduate, is now working as a Composer for Faber Music. Tom says his studies at The University of Manchester were absolutely crucial to his development as a composer – receiving inspiring and meticulous tuition on his pieces, was part of a rewarding community of composers, and benefitted from the University's emphasis on giving performance opportunities for composers.

Read more about Tom's career so far here:
uom.link/pg-music-tom

SOCIAL



[@uomhums](https://www.facebook.com/uomhums)



[@uomhums](https://twitter.com/uomhums)



[@uomhums](https://www.instagram.com/uomhums)

AMBASSADORS

Got a question for one of our students? Chat to our ambassadors online:

uom.link/salc-pg

STUDENT BLOGS

The best way to find out about what studying at Manchester is like is to read our student blogs

Contents

WELCOME TO MANCHESTER	04-05
FOLLOW IN THEIR FOOTSTEPS	06-07
ABOUT THE SCHOOL	08-09
COURSE INFORMATION	10-75
HOW TO APPLY	76-77
YOUR FUTURE	78-79
ACCESS OUR SUPPORT	80-81
PLAN YOUR FINANCES	82
ACCOMMODATION	83
LET'S TALK	84-85

Here at Manchester, we're proud to do things differently. At our university, ideas become actions – and those actions change lives.

We're a truly international institution, welcoming thousands of people from across the world to join our community. We enjoy a global reputation for pioneering research

and innovation, which connects us with people and organisations worldwide.

Choose Manchester and you'll experience an education and environment that will set you on a path to become a global citizen and make your mark on the world.



Top university

6th in the UK, 9th in Europe and 28th best university in the world
(QS World Rankings 2023)



Most targeted

The most targeted UK university by top graduate employers
(Higher Fliers Report 2023)



Impact

One of the world's leading institutions for action on sustainable development
(Times Higher Education University Impact Rankings 2023)



Global

Over 45,000 students from over 170 countries



Research power

5th in the UK for research power
(Research Excellence Framework 2021)

Welcome to

Manchester

Follow in their footsteps

Join a community of global innovators and pioneers whose achievements have helped shape the modern world – a place where 25 Nobel Prize winners have worked or studied.

You'll study in an academic environment that helps brilliant thinkers turn inspiration into reality, encouraging enterprise, experimentation and creative thinking.



Andre Geim and Kostya Novoselov are awarded the Nobel Prize in Physics for their isolation of graphene's potentially world-changing properties.

HERE ARE A FEW HIGHLIGHTS FROM OUR HISTORY

1904

Catherine Chisholm becomes the first woman to graduate in Medicine from Manchester Medical School. She helped set up the Manchester Hospital for Babies.

1906

Christabel Pankhurst, who would become a leading figure in the suffragette movement, becomes the first woman to graduate from the university in Law.

1915

William Bragg, while still a research student, becomes the youngest ever winner of the Nobel Prize in Physics.

1917

Ernest Rutherford becomes the first person to create an artificial nuclear reaction in a laboratory, ushering in a new era of nuclear research.

1945

Ellen Wilkinson becomes Britain's first female Minister of Education. Born in Manchester, Ellen won a scholarship to study at the university and entered politics after graduating.

1948

Freddie Williams and **Tom Kilburn** successfully run a program on 'The Baby', the world's first digital stored-program computer.

1948

Alan Turing, one of the WWII codebreakers, completes pioneering work in machine intelligence at Manchester, paving the way for artificial intelligence.

1957

Bernard Lovell completes the Lovell Telescope, the world's largest steerable radio telescope at the time, at Jodrell Bank.

1974

Jean McFarlane* is appointed as the first Professor of Nursing in the UK by the university and goes on to establish the country's first nursing degree.

1979

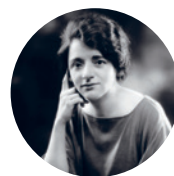
Arthur Lewis, Britain's first black professor, becomes the first black winner of a Nobel Prize in Economic Sciences.**

1993

Michael Smith, a Manchester PhD graduate, receives the Nobel Prize in Chemistry for his work on DNA engineering.

2010

Manchester alumna **Dame Sally Davis** is appointed as the UK's first female Chief Medical Officer.



*Permission to use reproduction material from the Royal College of Nursing **Permission courtesy of Keystone/ Stringer/ Getty

About the School

The School of Arts, Languages and Cultures is one of the largest groupings of students, teachers and researchers in the arts and languages anywhere in the world.

Here, you can meet people from all over the world, have your intellectual curiosity sparked, take creative risks and understand more about the subjects you're passionate about.

We attract research and academic talent from across the globe and give students a high-quality educational experience through dedicated teaching and access to a huge range of resources.

The School has 17 different disciplinary areas, plus teaching in nearly 20 languages, and is internationally-recognised in the fields of human cultures, beliefs, institutions and languages.

Our research stories

Hear from our researchers and lecturers as they dive into key topics in their areas of expertise – from Dr Nini's analysis of Jack the Ripper letters using forensic linguistics, to Dr Mazza's insights into decolonising Manchester's papyri collection.

[Click here or use this link: uom.link/salcstories](https://uom.link/salcstories)



OUR GRADUATE SCHOOL

Master's students in the School of Arts, Languages and Cultures automatically become part of our Graduate School, a large but tight-knit community. You'll get to know other postgraduates from the full breadth of subjects, hear different perspectives, debate common interests and foster relationships and collaborations.

As well as the purpose-built Graduate School common area, you'll have access to dedicated study areas for master's and research students, meeting and seminar rooms, and a conference space. You can take part in exclusive events, including summer schools, talks, public lectures and film screenings, enriching your student experience and building a broader portfolio of skills and knowledge, something that employers increasingly look for.

We'll support you to start, develop or change your career through numerous training and development opportunities, application and networking advice, guides on how to get the most from your master's year and information on progression to PhD study.

HOW YOU CAN BENEFIT FROM THE GRADUATE SCHOOL:

- Explore career options and opportunities with our Careers Information Team, whatever stage you're at.
- Access over 150 employers and build your professional networks at our Graduate Fair.
- Learn how best to do and start research with arts methods, a series of workshops, conferences and events exploring research in the arts.
- Learn how best to conduct research with arts methods via a series of workshops, conferences and events exploring research in the arts.
- Get insights on how to write the best PhD application and research proposal by speaking to a dedicated advisor who has gone through the process themselves.
- Increase your chances of getting published in our academic writing workshops.

The University is also proud to be home to some of Manchester's key cultural assets, giving you exclusive, behind-the-scenes access to a wealth of experiences that can enrich your degree. Benefit from the nearby John Rylands Library, The Whitworth Art Gallery, the Martin Harris Centre for Music and Drama and the Manchester Museum.

Art Gallery and Museum Studies MA

12 MONTHS (FULL-TIME)

24 MONTHS (PART-TIME)



Our MA Art Gallery and Museum Studies course is ideal if you're considering a career in this sector and want to gain practical experience through placements during your studies, or if you're a professional and want to further develop your practice.

As part of the prestigious Institute for Cultural Practices at Manchester, you'll examine relevant issues related to museum theory and practice, visit high-profile museums, galleries and cultural organisations, and discuss ideas and issues with top professionals and academics in the field. You'll take advantage of our excellent links to access a range of valuable work placements at notable cultural institutions, including:

- Manchester Museum
- The Whitworth
- Tate Liverpool
- Science and Industry Museum
- Manchester International Festival
- Imperial War Museum North
- Manchester Art Gallery

You'll also have opportunities to design and participate in live projects with cultural and heritage organisations in Manchester and go on field-trips across the UK and internationally.

COMPULSORY UNITS:

- Museum Studies
- Managing collections and exhibitions

OPTIONAL UNITS:

- Creative Learning
- Curating Art
- Decolonise the Museum
- Heritage, Museums and Conflict
- Business Strategies for the Arts
- Intangible Cultural Heritage
- Film Cultures Research, Industries, Practice
- Creative Producing

These are example course units based on 2023/24 options and are subject to change each year.

Find out more on our website
www.manchester.ac.uk/study/masters/courses/

WHY MANCHESTER?



Explore emerging critical approaches and shifts in museum practice and theory.



Undertake a work placement in a museum, gallery or related cultural organisation in or around Manchester.



Extend your practice-based experience through live projects with cultural organisations.



Work closely with the University's award-winning museums: the Manchester Museum and The Whitworth.

WHERE WILL YOUR DEGREE TAKE YOU?

This course offers an important entry-level qualification for anyone seeking to pursue a career in museums or galleries. It is also a valuable resource for continuing professional development for mid-career professionals.

These skills in research design and planning are transferable to jobs in the museum sector, as well as being a vital first step to PhD research.

Job destinations vary according to the interests, ambitions and skills of each individual, but most of our students are successful in obtaining professional posts in collections, exhibitions, education, interpretation, communication, or some aspect of museum/arts management soon after completing the MA.



DISCOVER ART GALLERY AND MUSEUM STUDIES
 Scan to discover more about the course
 or use this link: uom.link/agms-24

ALUMNI STORY

"The practical skills I gained during my placement, specifically grant writing, directly translated to the start of my career in development at the British Museum. The knowledge and support I received throughout my MA made me excited for a career within museums and gave me the skills I needed to succeed."

Victoria Stopar
 Grants Officer, The British Museum
 MA Art Gallery and Museum Studies

Find out more about our MA Art Gallery and Museum Studies graduates on our alumni profiles:
uom.link/pgalum-agms



STUDENT QUOTE

"The mix of academic study and vocational training appealed to me, as did the University's affiliation with the Whitworth Art Gallery and Manchester Museum. I was pleased to find that the course met my needs very well and the support and encouragement I received from the academic staff helped my progress throughout my time on the MA."

Liz Driver - MA Art Gallery and Museum Studies Graduate, now working as an Assistant Research Analyst for Morris Hargreaves McIntyre

Arts Management, Policy and Practice MA

12 MONTHS (FULL-TIME)

24 MONTHS (PART-TIME)



Our interdisciplinary MA Arts Management, Policy and Practice course covers a wide range of expertise associated with running arts organisations and coordinating arts and cultural programmes and events, as well as the strategic development of art forms, cultural leadership practices and local cultural management. You'll draw on broad literatures and sources, covering areas from the creative arts, drama, music, art history, critical theory and cultural economics, to business studies, organisational studies and critical cultural policy studies.

You'll also develop your knowledge and understanding of the history, theory and practice of arts management to gain an insight into the range of professional opportunities in the creative and cultural sector. You will explore cultural policy in international and historical contexts, and critically engage with the philosophical, political, social and economic imperatives informing contemporary practice.

This course consists of taught units and a dissertation, and brings together theory and practice in diverse areas including:

- Production and programming
- Policy-making
- Strategic management and leadership
- Finance and resource development
- Marketing
- Audience development
- Engagement and Participation
- Education
- Research
- Evaluation

These are example course units based on 2023/24 options and are subject to change each year.

Find out more on our website:
www.manchester.ac.uk/study/masters/courses/

WHY MANCHESTER?



Explore emerging critical approaches and shifts in cross-art form arts management practice and theory.



Undertake a work placement in an arts, culture or heritage organisation or related cultural organisation.



Develop a career in the museum sector.

WHERE WILL YOUR DEGREE TAKE YOU?

As well as going into further research, our postgraduates pursue successful careers as managers, administrators, policy-makers or practitioners in various branches of the arts, cultural and creative industries.

Opportunities exist in:

- the public, private, and voluntary sectors
- cultural venues, theatres, opera houses, concert halls, arts centres, museums and galleries
- the media, communications, PR and marketing
- orchestras, theatre companies and dance companies
- the Arts Council, British Council, local authorities, tourist boards and various funding bodies



DISCOVER ARTS MANAGEMENT, POLICY AND PRACTICE
 Scan to discover more about the course or use this link: uom.link/ampp-24

ALUMNI STORY

"During the MA Arts Management, Policy, and Practice course I was able to gain broader knowledge and significant practical experience, particularly during my work placement at non-profit In Place of War (IPOW). My experience in Manchester allowed me to understand and explore the creative fabric of a city. I gained invaluable practical skills, great friends, and am now able to work toward spreading arts in my community in a meaningful way."

Alison DiDonato
 Development Associate
 Arts Council of Princeton
 MA Arts Management, Policy and Practice

Find out more about our MA Arts Management, Culture and Practice graduates on our alumni profiles here:
uom.link/pg-agms-alumni



STUDENT QUOTE

"My placement at Company Chameleon encompassed every aspect of experience that I wanted to gain from taking the placement module. It allowed me to gain practical experience of a touring dance company, alongside the development of my administration and marketing skills."

Bethan Ellis
 MA Arts Management, Policy and Practice



Classics and Ancient History MA

12 MONTHS (FULL-TIME)

Our Classics and Ancient History MA is flexible and wide-ranging, enabling advanced study of ancient languages, literature, history, archaeology, and culture. The course content reflects the broad, multidisciplinary nature of the subject, and of our specialisms here in Manchester, including Latin and Greek, the history of Greek and Roman antiquity, and Greek and Roman literature, philosophy, and culture. We offer a specialist route through the MA - the City of Rome pathway - which involves taking a residential course unit at The British School at Rome.

COMPULSORY UNIT:

- The Study of the Ancient World (Introducing you to the key research questions and methods involved in advanced study of the discipline and giving you the opportunity to develop and present your own research project).

OPTIONAL UNITS

- Climate and Environment in the Ancient World
- Genre in Ancient Philosophy
- Hellenistic Poetry
- Heritage Museums and Conflict
- Latin Letters
- Urbanism in Ancient Egypt

These are example course units based on 2023/24 options and are subject to change each year.

Find out more on our website:
www.manchester.ac.uk/study/masters/courses/

As a combined Department of Classics, Ancient History, Archaeology and Egyptology, we also now offer course units and individual classes on the archaeology of ritual, on heritage theory and the ethics of museum practice, and on the history and art of Ancient Egypt. You may take one approved unit from another subject area (for example, History or Archaeology), or a Directed Reading course by negotiation with a tutor and with the Postgraduate Programme Director.

24 MONTHS (PART-TIME)

WHY MANCHESTER?



Join a department with a long and distinguished history and an excellent record in both teaching and research, supported by excellent resources.



Enjoy opportunities to begin or continue your study of Ancient Greek or Latin.



Access the exclusive holdings of the John Rylands Library, home to one of the most important collections of papyri in the world, including fragments of works by ancient authors such as Homer and Hippocrates.

WHERE WILL YOUR DEGREE TAKE YOU?

This non-vocational master's degree teaches and develops a wealth of transferable skills and enables students to keep a very wide range of career options open.

Recent MA graduates have gone on to a wide variety of careers in education and business, as well as to vocational MAs (such as Gallery and Museum Studies), and PhDs in Classics or Ancient History.



DISCOVER CLASSICS AND ANCIENT HISTORY
 Scan to discover more about the course or use this link: uom.link/clah-24



Ranking

Ranked in the top 30 universities in the world
 (QS World Rankings 2023).



Ranking

The University of Manchester is ranked in the top 10 for History programmes in the UK
 (QS World Rankings 2023).

ALUMNI STORY

Sam Holt
 Audio/Visual Transcriber
 MA Classics and Ancient History

"Studying Classics has given me great research and analytical skills as well as helping to improve my written English, which has helped me immensely in my current role as a transcriber, and will continue to be beneficial as I pursue a career in archivism and go on to further study. The most surprising aspect of my postgraduate studies that has helped me since graduating is the improvement of my communicational skills and the ability to articulate my ideas in coherent and concise terms, which has helped me in my professional and personal life."



STUDENT QUOTE

"The faculty and especially the professors in the CAHAE department are exceptionally helpful and engaging. The courses are difficult but also extremely rewarding and interesting. There is a variety of courses to choose from and I was able to focus on what specifically interested me."

Martha Gallagher
 MA Classics and Ancient History



Computational and Corpus Linguistics MA



12 MONTHS (FULL-TIME)

24 MONTHS (PART-TIME)

The programme offers a comprehensive training in computational linguistics - the study of the processing of human languages by machines – and corpus linguistics - the scientific study of human languages via databases of texts.

Students will learn the theoretical and practical foundations of computer natural language processing, gaining hands-on experience of building and analysing systems for the computer understanding and generation of text. They will acquire skills in linguistic analysis and learn to use corpus data to develop and test hypotheses in diverse areas of linguistics. Along the way they will acquire constitutive techniques in computer programming, statistics, and research design.

Alongside the core components of the course, they will have the opportunity to broaden their understanding by taking modules in other subfields of linguistics. Finally, they will apply these new skills in an independent research project. This might focus on developing, analysing or enhancing a natural language processing method or on using their new skills to address a theoretical linguistic question.

The course will particularly suit those with undergraduate degrees in Linguistics (or related disciplines) who want to develop quantitative and computational skills, and those with some quantitative skills who are seeking training in linguistics and computation.'

WHY MANCHESTER?



A lively community of researchers using computer natural language processing and opportunity to attend relevant research seminars across the campus.



Acquire quantitative skills for the analysis of linguistic data.



Department staff with knowledge of a diverse range of languages and experience in working with students who want to pursue a project on their own language.



Access to the University's High Performance Computing facilities and to corpora of modern and historical languages.

WHERE WILL YOUR DEGREE TAKE YOU?

Natural language processing skills are in high demand among employers and this course develops these skills from a unique linguistically-informed perspective. The skills gained during this course would help prepare you for data science and natural language engineering positions in the many sectors that make use of NLP and/or the analysis of language data. The focus on cutting edge skills in a fast moving field will also prepare you for jobs that do not yet exist.

*subject to approval

ACADEMIC SPOTLIGHT



Dr Colin Bannard
Senior Lecturer in Linguistics

Dr. Colin Bannard is the programme director for the MSc in Computational and Corpus Linguistics. He specialises in computational linguistics and psycholinguistics, studying how children become competent users of language in the first 2 to 3 years of life, and how this process can be replicated by machines. Much of his current work is focused on generative language models (of which GPT is a widely known example), on understanding and interpreting their behaviour, and how they can be used as models of human language production. He has also recently been applying computational linguistics in the detection of early signs of Parkinson's disease.

Learn more: uom.link/linguistics-colin



DISCOVER COMPUTATIONAL
AND CORPUS LINGUISTICS
Scan to discover more about the course
or use this link: uom.link/ccl-24

Creative and Cultural Industries MA

12 MONTHS (FULL-TIME)

24 MONTHS (PART-TIME)



The Creative and Cultural Industries MA will deliver comprehensive knowledge and understanding of key global theoretical perspectives and policy approaches, sector-based practices, issues and debates, tools and insights into evidence and decision-making for strategy and enterprise at individual, organisational and governmental levels.

The programme will facilitate graduates to analyse scenarios, make decisions, practice entrepreneurship and policymaking, and intervene actively both in academic and professional contexts.

Students will also be able to undertake a substantial industry placement, co-supervised by their host organisation and with an academic tutor. Students will be able to further develop and apply skills, knowledge and understanding in relation to sectoral areas such as Fashion, Publishing, Music, the Performing and Visual Arts, and to take relevant free choice options available from the existing courses available in the Institute of Cultural Practice, the School of Arts, Languages and Cultures and across the Faculty of Humanities.

WHY MANCHESTER?



Benefit from our wide range of placement partners across the cultural industries.



Have the opportunity to design and participate in live projects with cultural organisations.



Study in Manchester, a cultural powerhouse and thriving creative hub.



Work closely with the University's award-winning museums: the Manchester Museum and The Whitworth.



DISCOVER CREATIVE AND CULTURAL INDUSTRIES
Scan to discover more about the course or use this link: uom.link/ccl-24



CREATIVE AND CULTURAL INDUSTRIES VIDEO
Scan to watch our course video or use this link: uom.link/ccl-video-24

This course consists of taught units and a dissertation. Taught units cover topics including:

- Global CCIs: Policy, Evidence and Development
- Business Strategies for the Arts & CCIs
- Creative Labour: Work, Culture and Creative Economies
- Creative Geographies: CCIs & their Relations to Place
- Curating Art
- Industry Placement
- Creative Producing
- Producing Digital Projects
- Culture & Property

ACADEMIC SPOTLIGHT



Dr Leandro Valiati

Dr Leandro Valiati is the co-director of the Creative and Cultural Industries programme at The University of Manchester. He started his career in Brazil as a professor and policy advisor in Creative Industries and Economy of Culture, creating and leading the most representative policy-oriented academic centre on Creative and Cultural Industries in Latin America. In recent past years, he has been working in leading academic positions in research and teaching in several countries, such as France (Paris 13, Sorbonne University), Spain (the University of Valencia and International University of Catalunya) and the UK (QMUL – Network Centre; British Academy Fellow). He is currently part of the Advisory Board and International Council of the Policy and Evidence Centre for Creative Industries, NESTA/ARHC.

These are example course units based on 2023/24 options and are subject to change each year.

WHERE WILL YOUR DEGREE TAKE YOU?

Students will acquire the skills and training across a spectrum of roles and functions across the breadth of Creative and Cultural Industries, such as policymaking, individual entrepreneurship, academic research and industry-related jobs as well as specialist knowledge leading to careers in the individual subsectors.

Creative Writing MA

12 MONTHS (FULL-TIME)

24 MONTHS (PART-TIME)



Study on our competitive Creative Writing master's course and you'll be part of the prestigious Centre for New Writing, where we bring together world-famous writers to teach people how to produce novels, non-fiction, short stories, poems, plays and screenplays.

It's a selective degree programme, where talented writers and critics can meet to exchange ideas and opinions.

You'll benefit from seminars with Jeanette Winterson, workshops in fiction, non-fiction and poetry writing led by published, award-winning writers, and intensive, one-to-one instruction

You'll also have access to Literature Live which brings the best contemporary prose writers and poets to Manchester, skills-related sessions delivered by professionals in the publishing industry, mentorship from our Burgess Fellows, and regular visits from literary agents and editors, including leading literary agency PFD, which sponsors an annual prize for best student work.

There are no mandatory units as part of this course. Students are required to choose a combination of workshops and seminars based on their individual focus in poetry, fiction and creative non-fiction.

Workshops and seminars cover topics to support your writing and contextual knowledge, such as:

- Contemporary Fiction
- Workshop in Fiction
- Reading Poems
- Creative Non-Fiction Workshop

These are example course units based on 2023/24 options and are subject to change each year.

Find out more on our website:
www.manchester.ac.uk/study/masters/courses/



CREATIVE WRITING VIDEO
Scan to watch our course video or use this link: uom.link/cwvideo-24

WHY MANCHESTER?



Become part of a network of alumni including Sophie Hannah, Susan Barker, Chris Killen, Rebecca Perry, Jess Moor and Joey Connolly.



Learn from novelists and essayists Jeanette Winterson CBE, Ellah Wakatama, OBE, Ian McGuire, Beth Underdown, and poets John McAuliffe, Frances Leviston, and Michael Schmidt OBE.



Discover Manchester, a UNESCO City of Literature, through our partners such as Manchester Literature Festival, The Manchester Review, Carcanet and the International Anthony Burgess Foundation.



You will get the opportunity to have a piece of fiction, non-fiction or poetry published in The Manchester Anthology when you graduate.

WHERE WILL YOUR DEGREE TAKE YOU?

Some students pursue their literary careers and go on to become published writers, while others follow their passion through publishing, journalism and careers in the arts sector.

Other graduates undertake PhD study or follow careers in law, librarianship and teaching. Our alumni include Rebecca Perry, Sophie Hannah, Chris Killen, Alys Conran, Emma Jane Unsworth, Beth Underdown, Alex Allison, Jenn Ashworth, Evan Jones, and Marli Roode.

Upon successful completion of their course, many postgraduates go on or return to jobs as teachers or librarians, continue their research, or go on to academic jobs. Career paths are extremely varied, and other fields include law, publishing and retail.



DISCOVER ENGLISH LITERATURE AND CREATIVE WRITING
Scan to discover more about the course or use this link: uom.link/creativewriting-24

Ranking



The University of Manchester is ranked in the top 10 for English Language and Literature programmes in the UK (QS World Rankings 2023)

STUDENT QUOTE

"Since I finished the MA, I finished a book, I got an agent and I had the book published. My relationship with the staff at the Centre for New Writing was a big part of how much I enjoyed the course and how successful I was to go on to be. Those who continue to work and really take as much from the course as they can, are in such a good position to achieve the success that they're after."

Marli Roode
MA Creative Writing

ALUMNI STORY

"The course really cemented my love of English Literature and made me want to take this knowledge further and pass it on to others. The amazing tutors and teachers within the English department were also a source of inspiration. It really helped deepen and extend my knowledge of my subject area. I also took part in various spoken-word nights around the city of Manchester, which really helped to give me more confidence with public speaking, which has become a vital part of my job."



Lily Beck
MA Creative Writing
Deputy Head of Department (English and Humanities), Independent Secondary School

Digital Media, Culture and Society MA

12 MONTHS (FULL-TIME)

24 MONTHS (PART-TIME)



The MA in Digital Media, Culture, and Society offers advanced interdisciplinary study in the critique and use of digital media and technology with a particular focus on their cultural and societal implications.

Throughout the course you will learn to critically engage with the cultural and societal

impacts of digital media and technology; evaluate digitally mediated forms of intellectual pursuit, artistic expression and civic engagement; and conduct independent research on and with digital technology and media.

This MA course consists of taught units and a dissertation. Unit options include:

- Digital Methods
- Data in Culture and Society
- The Digital Self: Living in Networked Times
- Social Media, Platforms and Apps
- Artificial Intelligence, Algorithms and Society
- Spatial History: Mapping the Past
- Producing Digital Projects

Find out more on our website:
www.manchester.ac.uk/study/masters/courses/

WHY MANCHESTER?



Our teaching takes place in the Digital Humanities Lab, a dedicated, state-of-the-art teaching and research space with large screens, flexible seating, and high-performance laptops.



You will be taught by an interdisciplinary team based at the Centre for Digital Humanities, which brings together staff, students, and external partners promoting cutting-edge research at the intersection of the humanities and technology.



Now positioned as the engine room for the Northern Powerhouse, the city is benefiting from massive investment in its technological and cultural infrastructure such as MediaCityUK, the award-winning Whitworth, the Sharp Project and HOME.



Students may benefit from at least 20 days industry experience on a relevant project or programme, subject to availability, with a relevant business or organisation.

WHERE WILL YOUR DEGREE TAKE YOU?

The MA prepares students for careers in the growing digital technology, cultural and creative sectors, including marketing, data analytics, journalism and publishing, digital media and communications, design, visual arts, fashion, think tanks, NGOs, education, project management, consulting, and policy.

Students can also progress and further develop their skills and interests in PhD study. You will benefit from a wide range of CV-building opportunities on the course, and your supervisor provides you with personal and career development support.

ACADEMIC SPOTLIGHT



Dr Łukasz Szulc

Dr Szulc is the programme director on the MA Digital Media, Culture and Society programme. He specializes in critical and cultural studies of digital media at the intersection of gender, sexuality and transnationalism. Łukasz published books and articles on digital identity, dating apps and global culture, and he is currently working on the mainstreaming of gender diversity through digital media and queer migrants' use of digital technologies.

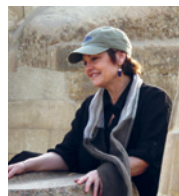
Learn more: uom.link/dmcs-lukasz-sulc



DISCOVER DIGITAL MEDIA,
CULTURE AND SOCIETY
Scan to discover more about the course
or use this link: uom.link/dmcs-24

Egyptology MA

24 MONTHS (PART-TIME, ONLINE)



STUDENT QUOTE

"I would unabashedly have to say the highlight of my MA experience has been getting to bask in the star-power of contemporary giants in the Egyptology field,

getting an up-close-and-personal interactive experience with my award-winning professors and lecturers who I formerly had access to only through BBC and National Geographic specials and glossy magazine articles. Thanks to close contact afforded by the programme, I now get personal emails discussing research matters from a truly impressive gamut of world-renowned scholars!"

Jerikay Gayle
MA Egyptology

This innovative course looks at specific aspects of ancient Egyptian society and culture and allows you to study the development of the field of Egyptology itself. You'll have the opportunity to learn applicable skills, such as how to organise museum exhibits, how to apply successfully for research funding and how to publish articles and books at various levels, enabling you to prepare for a career in Egyptology and the heritage sector, or for doctoral study.

The course is delivered entirely online through weekly recorded lectures and interactive discussion boards, which foster a sense of community and encourage discussion between the course tutors and students.

MODULES TYPICALLY INCLUDE: YEAR 1

- Academic Skills and Research Design in Egyptian Archaeology Part 1
- Social Studies of Ancient Egypt
- Academic Skills and Design in Egyptian Archaeology Part 2
- Art and Artists in Ancient Egypt
- Urbanism in Ancient Egypt

YEAR 2

- Ancient Egyptian Religion and Funerary Beliefs
- Identity and the Individual in Ancient Egypt
- The Amarna Period
- Fast-track Middle Egyptian

The second semester of Year 2 is dedicated to researching and writing the final 15,000-word dissertation.

These are example course units based on 2023/24 options and are subject to change each year.

Find out more on our website:
www.manchester.ac.uk/study/masters/courses/

You would not be required to physically attend the Manchester campus at any point during your studies, allowing you to adapt your study to existing job or personal commitments. We use innovative technologies to ensure that your distance learning experience closely mirrors the experience of our on-site students.

WHY MANCHESTER?



Study on the first online Egyptology master's course in the world.



Advance your understanding of ancient Egyptian society and culture.



Study when it suits you through our online part-time course.



Tailor the course to your own interests through a choice of optional units.



Prepare for a career in the heritage sector or for postgraduate research.

WHERE WILL YOUR DEGREE TAKE YOU?

This non-vocational master's degree develops a wealth of transferable skills, and will enable you to explore a number of career opportunities.

The course is designed to prepare you for a career in Egyptology and the heritage sector, or for doctoral study.



DISCOVER EGYPTOLOGY

Scan to discover more about the course or use this link: uom.link/egyptology-24



EGYPTOLOGY VIDEO

Scan to watch our course video or use this link: uom.link/egyptology-video-24

ACADEMIC SPOTLIGHT



Prof Joyce Tyldesley

Prof Tyldesley is a teaching-focused Egyptologist who teaches almost entirely online in the Department of Classics, Ancient History, Archaeology and Egyptology (CAHAE)

and the programme co-director of the MA Egyptology course. Joyce studied the archaeology of the Eastern Mediterranean at Liverpool University, then obtained a D.Phil in prehistoric archaeology from Oxford University. Her research interests include the development of distance-learning (on-line) Egyptology, Egyptian historiography, and the role of women in ancient Egypt.

Learn more: uom.link/prof-joyce-24



Dr Nicky Nielsen

Dr Nielsen is the programme co-director on the MA Egyptology programme. Nicky was awarded an AHRC Block Grant to undertake PhD research at the University

of Liverpool investigating subsistence strategies and craft production at the Ramesside fortress site of Zawiyet Umm el-Rakham. He has excavated in Europe, Turkey and Egypt, and is currently the field director of the Tell Nabasha Survey Project, which conducts archaeological investigations of the ancient city of Imet located in the north-eastern Nile Delta.

Learn more here: uom.link/dr-nielsen-24

English Literature and American Studies MA

12 MONTHS (FULL-TIME)

24 MONTHS (PART-TIME)



Our MA English and American Studies prepares you for further research in the discipline while also broadening and deepening your critical engagement with British and American literature and culture.

The structure of the course is flexible, which means you can choose to combine your interests in English and American culture, or focus more exclusively on one or the other.

Our department provides a vibrant research culture, close links to the Centre for New Writing, involvement in the Manchester Literature Festival and access to the world-class John Rylands Library.

While this course offers you a range of units that are chronologically or geographically

specific, all are informed by recent theoretical and historical developments that allow you to think about categories like literature, culture and history in nuanced and fresh ways.

This MA consists of taught course units and a dissertation. Course units cover:

- Space, Place and Text
- Historicism and the Archive
- American Studies: Theory, Methods, Practice
- Shakespeare: Theory and the Archive
- Revolutionary Poetics 1789-1850
- Radical Subcultures

These are example course units based on 2023/24 options and are subject to change each year.

Find out more on our website:
www.manchester.ac.uk/study/masters/courses/

WHY MANCHESTER?



Broaden and deepen your critical engagement with British and American literature and culture.



Access the exclusive Special Collections of the John Rylands Library, which holds Shakespeare's First Folio and the original archives of Elizabeth Gaskell and Ted Hughes.



Explore a wide range of cultural assets in Manchester, a UNESCO City of Literature.



Attend literary events throughout the year thanks to our Literature Live reading series - which attracts speakers such as Martin Amis, Seamus Heaney, Hilary Mantel and Audrey Niffenegger - and Manchester Literature Festival.

WHERE WILL YOUR DEGREE TAKE YOU?

Upon successful completion of their course, many English postgraduates go on or return to jobs as teachers or librarians, continue their research, or go on to academic jobs.

Career paths are extremely varied, and other English postgraduates go on or return to careers in law, publishing and retailing, as well as into many other fields.



DISCOVER ENGLISH LITERATURE
AND AMERICAN STUDIES
Scan to discover more about the course or
use this link: uom.link/englitamerican-24

STUDENT QUOTE

"In every seminar I'm challenged to think in ways that I've not thought for several years. The theoretical and critical aspects of the course have not only rejuvenated my passion for critical and cultural theory, but also for reading in general."

Sarah Bolger
MA English Literature and American Studies

ALUMNI STORY

"In my current job I work to several strict deadlines at one time, which I think I gained a lot of practice at during my degrees. I also use my research skills on a daily basis, and I attribute these to researching sources and information for essays. I write monthly reports for my programme, analyse qualitative data and create informed summaries – all of which are skills that I honed during my degrees! Additionally, I think I use my critical thinking skills in work and out of work."

Libby Turner
MA English Literature and American Studies
Peer Advisor and Placements
Coordinator at St Giles Trust



Film Studies MA

12 MONTHS (FULL-TIME)

24 MONTHS (PART-TIME)



Our MA Film Studies course has been designed to provide considerable opportunities to study film theory, history and culture, as well as aspects of socially engaged practice. If you want to enhance your artistic or professional career, or if you're planning to progress to doctoral study, this course is for you. It's also suitable if you're relatively new to the subject area and want to establish a solid foundation. It provides an excellent springboard for careers in film, screen media and the creative industries, as well as educational, social and community professions. Our academics cover film, screen and media studies from form and theory to historical and cultural approaches, and from national cinemas to the politics of identity, gender and sexuality, and film music, as well as film practice.

This MA consists of taught units and a dissertation. Taught units cover topics including:

- Film Theories, Debates and Approaches
- Film Cultures: Research, Industries and Practice
- Docufiction Filmmaking
- Social Lives of Cinema
- Adapting Fantastic Texts to Screen
- Screen Acting and Stardom
- From Documentary to Mockumentary

These are example course units based on 2023/24 options and are subject to change each year.

Find out more on our website:
www.manchester.ac.uk/study/masters/courses/

WHY MANCHESTER?



Gain a solid foundation in theoretical and critical film studies.



Have the opportunity to study areas of film theory, history and culture, as well as aspects of socially engaged practice.



Learn from teaching and research-active staff who work in close collaboration with cultural partners including HOME, Granada Centre for Visual Anthropology and North West Film Archive.



Ranking

2nd in the UK for Drama and Cinematics

(Sunday Times Good University Guide 2023).



DISCOVER FILM STUDIES

Scan to discover more about the course or use this link: uom.link/ma-film-24



STUDENT QUOTE

"The practical options on the fantasy adaptation and directed practice modules gave me the chance to take my scriptwriting and film production skills to the next level."

The inspirational lectures and expert tutorials opened my eyes to ground-breaking film works, theoretical knowledge and approaches to creative work which has transformed my practice."

Marianne Knowles
MA Film Studies 2019

WHERE WILL YOUR DEGREE TAKE YOU?

By teaching and developing a considerable range of transferable skills, this course opens doors to a wide range of career options. Previous MA students have gone on to take up PhD study, with many then progressing to academic and teaching careers in further and higher education institutions. Other graduates have gone on to work for the BBC, independent television production companies and as festival organisers, as well as in film education and other areas of the film and screen media industry.



ACADEMIC SPOTLIGHT

Dr MaoHui Deng

Dr MaoHui Deng is a Lecturer in Film Studies and the programme director. He is an elected member of the Executive

Committee of the British Association of Film, Television and Screen Studies. His research is interested in the interdisciplinary conversations between cinema, ageing, and dementia.

Gender, Sexuality and Culture MA

12 MONTHS (FULL-TIME)



Our innovative and highly interdisciplinary MA Gender, Sexuality and Culture is designed specifically for students interested in investigating gender and sexuality within culture.

Our approach is unique within the UK, bringing together scholars who offer options in a range of academic disciplines, including English and American studies, art history and visual cultures, politics, history, modern languages, religions and theology, history of medicine, sociology, social anthropology, as well as others.

In close consultation with the course directors, you'll opt for a range of MA units drawn from offerings across the humanities and social sciences. You will also be able to take up training in research methods.

This approach allows you greater flexibility and the opportunity to pursue research in new areas.

This MA consists of taught units and a dissertation. Taught units cover topics including:

- Modernism and its Margins
- Queer Cinema and Beyond
- Before 'Sexuality': Bodies, Desires and Discourses, 1660-1900
- Religion and Gender Theory
- Sociology of Consumption
- Protest and Progress: Understanding Movements for Social and Political Change
- Contemporary Fiction
- Trans Theory
- The AIDS Crisis: American Cultural Representation

These are example course units based on 2023/24 options and are subject to change each year.

Find out more on our website: www.manchester.ac.uk/study/masters/courses/

WHY MANCHESTER?



Join the UK's first dedicated research facility focusing exclusively on the relationships between sexuality, culture and history.



Discover new approaches to gender studies and sexuality studies as theoretical, social, cultural, political and historical fields of investigation.



Challenge current understandings of gender and sexuality by interrogating cultural identities, such as queer, heterosexual, homosexual, gay, straight, bisexual and transgender.



Examine cultural production and cultural theory in relation to other power systems, such as race, ethnicity and class.

WHERE WILL YOUR DEGREE TAKE YOU?

Whether you're currently employed, are looking for inspiring new career opportunities by furthering your knowledge, are passionate about research, or simply wish to explore a subject you adore in much greater detail, our MA will help you to develop a wealth of transferable skills.

Our graduates have gone on to take up a diverse range of careers in both the public and private sectors.



DISCOVER GENDER SEXUALITY AND CULTURE
Scan to discover more about the course
or use this link: uom.link/gender-24



GENDER, SEXUALITY AND CULTURE VIDEO
Scan to watch our course video or
use this link: uom.link/gendervideo-24

ALUMNI STORY

Emily now works as a Marketing, Communications and PR Officer where she creates all marketing, internal communications and PR materials for Barnsley College, a Further Education college based in South Yorkshire. She also works as a Freelance Journalist and Community Researcher in her spare time and over the past year, has written several articles for publications, including Tribune, The Morning Star and The Erotic Review.

Emily Ingram – MA Gender, Sexuality and Culture Graduate
Marketing, Communications and PR Officer, and Freelance Journalist and Community Researcher

Read more about her career so far here: uom.link/GSCblog



STUDENT QUOTE

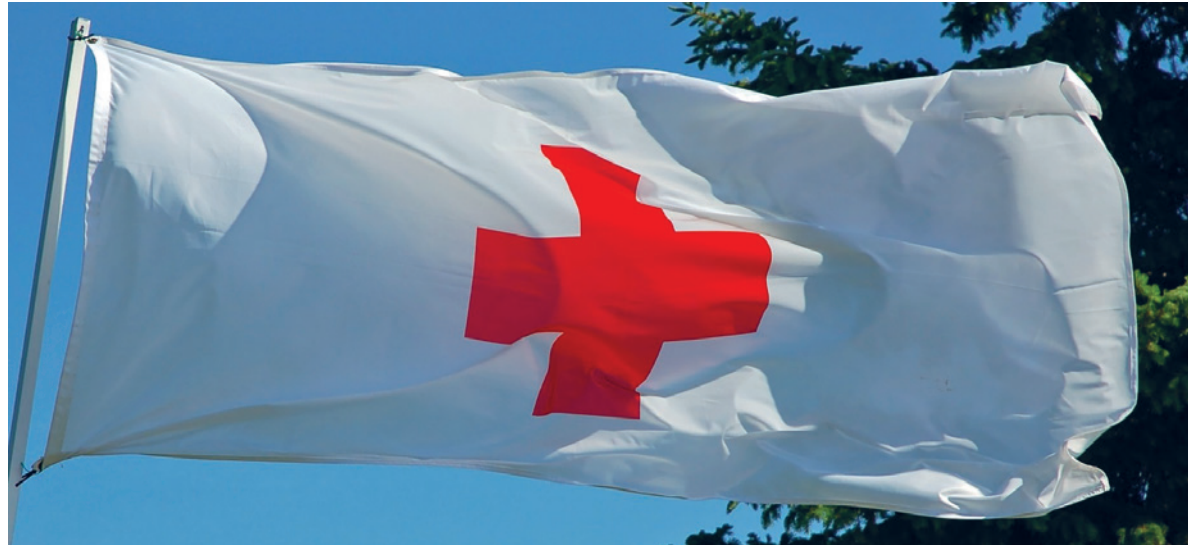
"The MA in Gender, Sexuality and Culture is unique in the UK, and Manchester offers a great variety of study resources."

Furthermore, the city's cultural offering compliments my course extremely well."

Anne Engels
MA Gender, Sexuality and Culture

Global Health MSc

(PART-TIME) MSC 3 YEARS, PGDIP 2 YEARS, PGCERT 12 MONTHS



Our part-time online MSc Global Health course has been developed in collaboration with the International Federation of the Red Cross and Red Crescent Societies (IFRC).

Aimed at both those new to the humanitarian and global health sectors, and professionals who want to update their skills, our course offers a practical means of studying whilst still working, and an inclusive approach which mirrors the reality of delivering interventions in a humanitarian and global health context.

You will explore issues related to the worldwide improvement of health, the reduction of disparities, and protection against global threats that disregard national borders.

The course is unique in bringing together the study of emergency medicine, disaster management, community health, anthropology and the sociology of health and illness in an online format.

You will have access to leading multidisciplinary academics and practitioners. For example, we have a close working relationship with

the charity UK-Med, which aims to improve the training and accountability of medical teams to sudden onset disasters and complex emergencies as well as delivering an operational field response and supporting the development of health system capacity.

This MSc consists of taught units in years one and two, with a dissertation in year three. You can choose to exit the course after year one to receive a PGCert or year two to receive a PGDip. Taught units cover topics including:

- Community Approaches to Health
- Ethics, Human Rights and Health
- Health Systems and Markets
- Risk, Vulnerability and Resilience
- Diseases and Trauma in Developing Countries
- Management and Leadership in Health & Humanitarianism
- Disaster Preparedness
- Research Methods in Global Health

These are example course units based on 2023/24 options and are subject to change each year.

Find out more on our website:
www.manchester.ac.uk/study/masters/courses/

WHY MANCHESTER?



Study the worldwide improvement of health, reduction of disparities and protection against global threats.



Cover topics such as emergency medicine, disaster management, community health, anthropology, and sociology of health and illness.



Study when it suits you through part-time online learning.



Benefit from insights from the International Federation of the Red Cross and Red Crescent Societies (IFRC) and Médecines sans Frontières (MSF).



Choose to start studying in January or September.

WHERE WILL YOUR DEGREE TAKE YOU?

This course is aimed at both those new to the humanitarian sector and those already in the field.

Those working in or aspiring to engage in the field of Global Health will be able to harness their new knowledge and perspectives help to develop the health agenda and engage with senior roles in government and non-governmental (NGO) organisations.

You will be able to use your experience to move into careers within the civil service, international and national NGOs, national health services, academic institutions and more.



DISCOVER GLOBAL HEALTH
Scan to discover more about the course or use this link: uom.link/globalhealth-24

ACADEMIC SPOTLIGHT



Dr Darren Walter is the online programme director and is Clinical Senior Lecturer in Emergency Global Health at the Humanitarian

Conflict and Response Institute (HCRI) at The University of Manchester. Darren is also a consultant in Emergency Medicine at Wythenshawe Hospital. Coming from a healthcare background, Darren describes how the multidisciplinary nature of HCRI allows him to advance out of his medical comfort zone. Darren reflects that his colleagues allow him to connect with a much wider spread of disciplines: "They're an integral part of HCRI and they are all equal parts of the wider mission."

ALUMNI STORY



"As I was based in the Philippines at the time for work, it made it possible for me to gain a degree from a UK university, while living and working on the other side of the world. I also enjoyed the virtual classroom experience, where I was able to interact with people in similar jobs like my own. This was a truly enriching experience and something my first degree certainly did not offer at the time. The course being online also meant you are in complete control of when and where you study, write and work. This made the course extremely flexible and well-suited for people with busy schedules, and/or full-time jobs."

Suzanne Damman
MSc Global Health Deputy Regional Director Asia at Centre for Humanitarian Dialogue

Heritage Studies MA / PG Dip

12 MONTHS (FULL-TIME)

PG DIP 9 MONTHS (FULL-TIME)

24 MONTHS (PART-TIME)

18 MONTHS (PART-TIME)



Our MA Heritage Studies master's course is ideal if you want to develop your knowledge and practical skills to pursue or develop a career in heritage policy, management, conservation, learning, engagement and enterprise.

Heritage Studies examines the theory and practice of heritage making, management and use in local, national and international contexts. It includes both the practical aspects of conservation and management and a study of social, political and economic dynamics in cultural, archaeological, built and natural heritage.

You'll be able to gain intensive work experience and take critical reflective practice within a range of heritage organisations across the region and further afield through our long-standing placement scheme.

Benefit from the expertise of the Institute for Cultural Practices and other specialists in archaeology, art history and history, and access

the University's cultural heritage assets, such as Manchester Museum, the John Rylands Library and Jodrell Bank Discovery Centre.

This MA consists of taught units and a dissertation, with options for a work placement and professional practice project. Taught units cover topics including:

- Digital heritage
- Curating and engagement
- Decolonising museums and heritage
- Heritage and sustainable development
- Intangible cultural heritage and natural heritage
- Creative learning
- Heritage and learning
- Strategic planning and management of heritage projects and enterprises.

These are example course units based on 2023/24 options and are subject to change each year.

Find out more on our website:
www.manchester.ac.uk/study/masters/courses/

WHY MANCHESTER?



Develop your skills in and knowledge of heritage policy, management, conservation, learning, engagement and enterprise.



Gain workplace experience through a placement at a heritage site or organisation in the north-west of England.



Have the opportunity to design and take part in live projects with heritage organisations in Manchester.



Benefit from access to key University assets such as the Manchester Museum, John Rylands Library and Jodrell Bank Discovery Centre.

WHERE WILL YOUR DEGREE TAKE YOU?

Progression opportunities include work in heritage policy and management roles for national and international organisations, such as the Heritage Lottery, Historic England, the National Trust, and UNESCO.

Other roles within museums and heritage organisations include fundraising and development, research and consultancy, visitor service management, community learning and engagement, collections management and site management.



DISCOVER HERITAGE STUDIES
Scan to discover more about the course or use this link: uom.link/ma-heritage



HERITAGE STUDIES VIDEO Scan to watch our course video or use this link: uom.link/heritage-video-24

STAFF SPOTLIGHT

Dr Jenna Ashton Lecturer in Heritage Studies



Dr Jenna Ashton is an experienced curator and producer, working in the areas of heritage, arts, participation, public space, ecologies and story-telling. She is passionate about embedding inclusive practices and co-production methods in the arts and heritage sectors. Jenna is also the Founder and Creative Director of Digital Women's Archive North – a Manchester-based feminist arts and heritage organisation addressing social inequalities through creative archiving and documentation.

Learn more: uom.link/drashton

ALUMNI STORY

"The support from academic staff has been amazing. The programme's very open to your personalisation and staff have been keen to help me write about the case studies that are close to me. I've had some incredible opportunities this year. This course has been a fantastic chance to develop my academic and professional skills at the same time, making use of the ways in which the two intertwine."

Sophie Small
Heritage Studies MA - Museum Assistant
at Salford Museum and Art Gallery

Find out more about our MA Heritage Studies graduates on our alumni profiles:
uom.link/heritagealumni

History MA

12 MONTHS (FULL-TIME)

24 MONTHS (PART-TIME)



Our MA History master's course enables you to tailor your postgraduate studies to suit your interests.

Your focus could be chronological (medieval, early modern or modern), geographical (European, transnational, global) or methodological (cultural or economic and social history).

Alternatively, you can create a wide-ranging course for yourself by choosing units from a variety of areas, including thematic course units that transcend orthodox boundaries to facilitate intellectual breadth and imagination.

We have over 40 members of staff with world-class expertise in medieval, early modern and modern history, stretching across national and international boundaries,

with strong representation in economic, social and cultural approaches to history.

This course consists of taught units and a dissertation. Taught units cover topics including:

- The History of Capital
- Race, Migration & Humanitarianism
- War, Culture and Conflict
- Introduction to Documentary filmmaking in the Arts & Humanities
- History Beyond the Nation State: Debates & Dialogues in Modern History

These are example course units based on 2023/24 options and are subject to change each year.

Find out more on our website:
www.manchester.ac.uk/study/masters/courses/

WHY MANCHESTER?



Benefit from access to extensive and excellent material research resources.



Study in Manchester, a living history book – from Peterloo and the anti-slavery movement, to Roman forts and medieval monuments.



The University of Manchester and John Rylands Libraries offer immense holdings of printed primary medieval sources and extensive holdings for early modernists.



Other collections include other papers of prominent scientists and academics, and collections in military, diplomatic, and colonial history.

WHERE WILL YOUR DEGREE TAKE YOU?

The high standard of arts research training, both formal and practical, opens doors to many kinds of modern public and private sector graduate careers requiring research skills, formulation of projects and policy documents as well as a range of other careers. Our course also offers outstanding doctoral research preparation training through the core units and skills training programme.



DISCOVER HISTORY
 Scan to discover more about the course
 or use this link: uom.link/history-24

STUDENT QUOTE

"The History MA programme really expanded my intellectual and methodological approaches – the programme really focuses on how historians have researched and written about the past and this experience really guided my own focus for my dissertation."



Audrey Berdahl-Baldwin,
 USA Marshall Scholar, MA History

Watch Audrey describe her experience with the History MA programme and studying at The University of Manchester:
uom.link/pg-history

"The course at Manchester really enabled me to explore and expand my interests. Indeed, it simultaneously enabled me to develop a lot of new understanding and knowledge of history, whilst also expanding my pre-existing interests as well."

Jack Mitchell MA History



Ranking

The University of Manchester is ranked in the top 10 for History programmes in UK
 (QS World Rankings 2023)



Ranking

We are ranked in the top 5 research departments in the UK for History
 (REF 2021)

Humanitarianism and Conflict Response MA

12 MONTHS (FULL-TIME)

24 MONTHS (PART-TIME)



This multidisciplinary course focuses on response to crises originating from both conflict zones and natural disasters. Bringing together the study of medicine, humanities and social sciences, the course gives you an inclusive approach that mirrors the reality of aid operations and informs the reflexive processes of both analytical and applied disciplines.

You'll study at the Humanitarian and Conflict Response Institute (HCRI) at The University of Manchester, which is widely recognised as a leading international research institute focusing on the study of humanitarianism, conflict response and peacebuilding. Our work is driven by a desire to inform and support policy and decision makers, to optimise joint working between partner organisations, and to foster increased understanding and debate within the field. You'll benefit from being able to draw on an exceptionally wide

breadth of disciplinary traditions and research expertise at the Institute and beyond.

This course consists of taught units and a dissertation. Taught units cover topics including:

- Reconstruction and Development
- Conflict Analysis
- Humanitarian Diplomacy
- Global Health and Food Insecurity
- Vital Mobilities: Delivering Healthcare in a Changing Climate
- Systemic Approaches to Disaster Management
- Ethics, Human Rights and Health
- Climate Change, Disasters and Responses
- Young People in Conflict and Displacement

These are example course units based on 2023/24 options and are subject to change each year.

Find out more on our website:
www.manchester.ac.uk/study/masters/courses/

WHY MANCHESTER?



Learn from some of the most renowned names in the field of humanitarian research.



Take part in an optional research trip to Uganda, where you will understand more about careers in humanitarian work and add significant experience to your CV.



Receive a thorough grounding in both the practical and theoretical aspects of humanitarian issues.



Engage first-hand with the people, projects and organisations that shape humanitarian, global health, disaster management, conflict response and intervention issues around the world.

WHERE WILL YOUR DEGREE TAKE YOU?

Students at the Humanitarian and Conflict Response Institute come from a broad range of backgrounds, with varying levels of experience.

The skills gained on the course have helped to prepare graduates for national and international careers in: development, migrant protection, humanitarian consultancy, health protection, security consultancy, and medicine.

- Organisations our graduates have gone on to work in include: International Committee of the Red Cross (ICRC), Human Appeal, United Nations High Commissioner for Refugees (UNHCR), Voluntary Services Overseas and the British Heart Foundation
- National Resource Governance Institute
- Civil Service, including the Foreign, Commonwealth and Development Office.



DISCOVER HUMANITARIANISM
AND CONFLICT RESPONSE
Scan to discover more about the course or
use this link: uom.link/humanitarianism-24

STUDENT QUOTE



"I have enjoyed getting to know a wide range of people from across the globe, the people I have met on this course have already become friends for life, HCRI is like a family. I have also enjoyed learning about a new field of interest and how this is impacting the world. I have learnt a lot since joining HCRI, one of the most interesting being the speaker's series where they get experts from the field to come and give talks to the students. These have been very insightful as you get to hear first-hand experiences for those currently employed in this sector. These talks, as well as lectures, have highlighted the challenges that can come with this type of career but that it can also be very rewarding."

Lucy Hiley
MA Humanitarianism and Conflict Response

ALUMNI STORY

"I enjoyed most that HCRI adopts an interdisciplinary approach. Coming from an undergraduate degree in English and History, I appreciated the reflective focus that the Institute adopts, in its study of the history of humanitarianism but also across the disciplines of global health, mental health and psychosocial support, humanitarian protection and anthropology – just to name a few of its diverse offerings. I have since been interim trust manager for a charitable trust and have recently taken up post at the Catholic development agency (CAFOD) as the Campaigns Officer. My work this year will be focused on the UK's hosting of the G7 and COP26 and implementing CAFOD's 'Reclaim our common home' campaign"

Anna Fraine
MA Humanitarianism and Conflict Response
Campaigns Officer at CAFOD

Humanitarian Practice MSc

MSC/PGDIP/PGCERT

UP TO 60 MONTHS (PART-TIME)



HUMANITARIAN PRACTICE VIDEO
Scan to watch our course video or use this link:
uom.link/humanitarianvideo-24

STUDENT QUOTE

"The programme has widened my view and deepened my insight."

Critical Approaches to the Management of Humanitarian Operations made me think about philosophy as a humanitarian and a future leader in this field. Through discussion, group work, and reflective essay writing, I have learnt many issues to consider in humanitarian operations."

Sehyeon Kim / Programme Co-ordinator,
Korea International Cooperation Agency



Our blended learning MSc in Humanitarian Practice is part of the Leadership Education Academic Partnership (LEAP) programme. A flexible course designed by humanitarians, for humanitarians, it allows professionals to study alongside working in the field.

The programme is delivered jointly by the Humanitarian Conflict Response Institute (HCRI) at The University of Manchester and the Liverpool School of Tropical Medicine (LSTM) in partnership with Médecins Sans Frontières (MSF). The course brings together the disciplines of epidemiology, history, politics, anthropology, development studies, international relations, public health, management and humanitarian medicine, as well as the expertise of academics and leading practitioners.

Crossing traditional subject boundaries, it will enable you to reflect critically on issues arising from your own work, the wider humanitarian agenda and develop the skill set needed for contemporary humanitarian practitioners. The course is blended, meaning there is a two-week intensive teaching period each semester either online or in Manchester or Liverpool for the core modules. There are also options to undertake a mix of both on-line and on-campus courses to build your academic credit.

As a student of HCRI and LSTM, you will benefit from a comprehensive and interdisciplinary approach to teaching and research, as well as individual tutoring and supervision from academics from a wide range of disciplines. This course consists of taught units and a dissertation. Taught units cover topics including but not limited to:

- History of Humanitarian Aid
- Critical Approaches to Evidence
- Research Into Practice
- Critical Approaches to Management of Humanitarian Operations

WHY MANCHESTER?



Choose from multiple awards; PGCert, PGDip and MSc.



Benefit from our partnership with Médecins Sans Frontières and Liverpool School of Tropical Medicine.



Learn in both an on-line format, with a mix of asynchronous and synchronous learning, and with the option of studying on-campus if wished.



Critically reflect on your humanitarian work and gain the relevant academic background to inform decisions made in practice.



Strengthen your leadership skills, helping you to grow into a management or coordination position within a humanitarian organisation.

These are example course units based on 2023/24 options and are subject to change each year.

Find out more on our website:
www.manchester.ac.uk/study/masters/courses/

WHERE WILL YOUR DEGREE TAKE YOU?

This course is aimed at those already working in the humanitarian sector.

Students will be able to harness the knowledge gained from their course to progress within their field of expertise, reaching senior leadership roles within humanitarian organisations.



DISCOVER HUMANITARIAN PRACTICE
Scan to discover more about the course or use this link: uom.link/humanitarianpractice-24

ACADEMIC SPOTLIGHT



Dr Darren Walter Global Health

Dr Darren Walter is the online programme director and is Clinical Senior Lecturer in Emergency Global Health at the Humanitarian Conflict and Response Institute (HCRI) at The University of Manchester. Darren is also a consultant in Emergency Medicine at Wythenshawe Hospital.

Coming from a healthcare background, Darren describes how the multidisciplinary nature of HCRI allows him to advance out of his medical comfort zone. Darren reflects that his colleagues allow him to connect with a much wider spread of disciplines: "They're an integral part of HCRI and they are all equal parts of the wider mission."

Learn more: uom.link/darren

STUDENT QUOTE

"The course has given me a new mindset for humanitarian work. It has shown me that in the world of humanitarianism, one is not limited to a single approach."

The Critical Approaches to Evidence module has been very beneficial to me. It has given me a second set of critical eyes to look for better analysis and conclusions. This module has taught me how to approach situations with an open mind. In effect, it has taught me that not every piece of writing, or evidence, should be accepted as the status quo."

Ira Johnson / Liaison Officer with
MSF Belgium in Sierra Leone

Intercultural Communication MA

12 MONTHS (FULL-TIME)

24 MONTHS (PART-TIME)



This course brings together a wide range of expertise to explore the cultural complexities and diversity of our current times from a variety of conceptual, disciplinary and professional perspectives.

Course units cover subjects such as:

- Migration
- Memory
- Media

- Translation
- Language Contact
- English as a Global Language
- Communicative Interaction
- Intercultural Relations
- Intercultural Competence

These are example course units based on 2023/24 options and are subject to change each year.

Find out more on our website:
www.manchester.ac.uk/study/masters/courses/

WHY MANCHESTER?



Study in a vibrant multicultural and multilingual city, where you can put what you learn into practice.



Learn about cutting-edge critical approaches in intercultural communication research.



Develop knowledge of intercultural communication training.



Take course units in foreign languages.

WHERE WILL YOUR DEGREE TAKE YOU?

This course will enhance your opportunities to gain employment in fields where intercultural competence is valued, for example, many multinational companies and organisations, international projects and NGOs, and multicultural and immigrant communities.

Some graduates also pursue careers in academia. Graduates have found employment at UN agencies, internationally-minded cultural organisations, translation agencies in the UK and abroad, and universities in the UK and around the world.



DISCOVER INTERCULTURAL COMMUNICATION
Scan to discover more about the course or use this link: uom.link/intercultural-24



INTERCULTURAL COMMUNICATION VIDEO
Scan to watch our course video or use this link: uom.link/interculturalvideo-24

ACADEMIC SPOTLIGHT



Dr Anastasia Stavridou
Lecturer in Intercultural Communication

Dr Anastasia Stavridou is a Lecturer

in Intercultural Communication. Her research interests lie in the fields of Sociolinguistics, Discourse Analysis and Intercultural Communication more broadly, and in leadership - followership, sports communication and identity construction more specifically.

Read more: uom.link/anastasia

ALUMNI STORY

Cæcilie now works as a Study Abroad Coordinator for a private company and as an Admissions Officer assessing foreign exams for applicants to the University of Copenhagen.

Read more about her career: uom.link/caecilie



Cæcilie Pippet Riinbæk - MA Intercultural Communication Graduate

International Disaster Management MSc

12 MONTHS (FULL-TIME)

24 MONTHS (PART-TIME)



Our MSc International Disaster Management course enable you to develop the knowledge needed to respond to and help prevent disasters. When disasters strike they require a quick response, and create burdens for rescue and humanitarian workers.

There is a demand not only for preparing and equipping workers prior to disaster, but also building knowledge to prevent disasters from occurring. A community that has both capacity to prevent disasters and a ready-to-respond team can reduce mortality and social, cultural, and economic losses.

Our master's course is consistent with the Sendai Framework for Disaster Risk Reduction (SFDRR) 2015-2030, which emphasises disaster education. This course is designed to equip you with advanced knowledge, and to

continue your personal development in disaster risk management and humanitarianism.

You will learn to conduct theoretical and applied analyses, as well as evaluation to support disaster management and humanitarian action in a global context. This course can be completed in-person or online. The in-person stream can be done in one year (full-time) or two years (part-time). The online stream consists of taught courses in years one and two, with a dissertation in year three. Course offerings include:

- Gender, Race and Security
- Disaster Politics
- Disaster Management
- Anthropology of Violence and Reconstruction
- The Politics of International Intervention, Conflict and Peace
- Young People in Conflicts and Displacement

WHY MANCHESTER?



Develop knowledge and critical thinking skills to help prepare for a career in disaster management.



Learn from an interdisciplinary team, drawing on ideas and methods in geography, history, politics, development studies, the arts and medicine.



Benefit from opportunities with the people, projects and organisations that shape humanitarian, global health, disaster management, conflict response and intervention issues around the world.



Study in-person to experience Manchester or via distance learning

These are example course units based on 2023/24 options and are subject to change each year.

Find out more on our website:
www.manchester.ac.uk/study/masters/courses/

WHERE WILL YOUR DEGREE TAKE YOU?

This course can open up a wide range of career options, such as roles in the civil service within various government ministries, including disaster management offices, foreign offices, and international development offices.

You could also work at international institutions such as:

- UN Inter-Agency Standing Committee
- International Strategy for Disaster Risk Reduction
- World Bank
- World Health Organisation

ACADEMIC SPOTLIGHT



Dr Stephanie Sodero Lecturer in Climate Change and Health

Dr Stephanie Sodero researches vital mobilities move from the point of donation/manufacture to the point of care, and how such geographically

dispersed supply chains can be made more resilient in a changing climate.

She is also part of an HCRI, UK-Med, and Save the Children-UK initiative, funded by the UK Disasters Emergency Committee, examining how the aid system needs to prepare for the climate emergency.

Dr. Sodero published her first book (McGill-Queen's University Press, 2022) titled 'Under the Weather: Reimagining Mobility in the Climate Crisis.'

- International Federation of Red Cross
- Peacebuilding Commission
- Department of Peacekeeping Operations
- Regional bodies such as the European Union, African Union, Organization of American States.

Other career paths could open up within local and international NGOs working on peacebuilding initiatives, or in academia, research institutes and think-tanks.



DISCOVER INTERNATIONAL
DISASTER MANAGEMENT
Scan to discover more about the course
or use this link: uom.link/msc-hcri-24

International Disaster Management and Humanitarian Response MSc

MSC/PGDIP/PGCERT

UP TO 60 MONTHS (PART-TIME)



Our MSc distance-learning course will enable you to develop the skills and knowledge needed to help prevent and respond to international disasters.

When disasters do strike, they require a rapid and often global response, creating challenges for rescue and humanitarian workers. There is a need to build resilience and develop knowledge and skills to prevent or mitigate the scale of disasters and also a demand to prepare and equip responders in advance of the disaster event to deliver the most effective and efficient response.

Our course is consistent with the Sendai Framework for Disaster Risk Reduction 2015–2030, which emphasises disaster education. This course has been designed to equip you with the advanced knowledge, and to continue your personal development in both disaster risk management and humanitarian response.

You will learn to conduct theoretical and practical analyses, as well as evaluate a crisis response to support disaster management and humanitarian action in a global health context. This course offers flexible fully online and asynchronous study to enable part-time students to obtain a Master's degree without residency or boundary restrictions.

You will learn to conduct theoretical and practical analyses, as well as evaluation to support disaster management and humanitarian action in global health contexts. This course offers flexible online study that enables part-time students to obtain a Master's degree without residency and boundary restrictions.

This course consists of taught units that cover topics including:

- Risk, Vulnerability and Resilience
- Emergency Humanitarian Assistance

- Disaster Preparedness
- Community Approaches to Health
- Rethinking Recovery
- Mental Health and Psychosocial Support in Humanitarian Crises
- Humanitarian and Conflict Response: Inquiries
- Research Methods

These are example course units based on 2023/24 options and are subject to change each year.

Find out more on our website:
www.manchester.ac.uk/study/masters/courses/

WHERE WILL YOUR DEGREE TAKE YOU?

This course can open up a wide range of career options, such as roles in the civil service within various government ministries, including disaster management offices, foreign offices, and international development offices.

You could also work at international institutions such as:

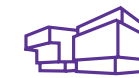
WHY MANCHESTER?



Develop the skills and knowledge required to prevent or mitigate but also respond quickly to disasters that do occur.



Study via distance learning without leaving home or interrupting your career.



Benefit from the expertise of the Humanitarian and Conflict Response Institute, including a decade of online teaching.



Take advantage of PGCert, PGDip and MSc study pathways.



Choose to start studying in January or September.

- UN Inter-Agency Standing Committee
- International Strategy for Disaster Risk Reduction
- World Bank
- World Health Organisation
- International Federation of Red Cross
- Peacebuilding Commission
- Department of Peacekeeping Operations
- Regional bodies such as the European Union, African Union, Organization of American States.

Other career paths could open up within local and international NGOs working on peacebuilding initiatives, or in academia, research institutes and think-tanks.



DISCOVER INTERNATIONAL DISASTER MANAGEMENT AND HUMANITARIAN RESPONSE
 Scan to discover more about the course or use this link: uom.link/idm-hr-24

Library and Archive Studies MA

12 MONTHS (FULL-TIME)

24 MONTHS (PART-TIME)



WHY MANCHESTER?



The University of Manchester Library is at the heart of the UK's largest university, welcoming over three million students, researchers and visitors per year.



Enjoy exclusive access to world-class collections of the John Rylands Library.



Benefit from access to extensive and excellent material research resources.



Placement opportunities with library, archive and industry partners provide assessed practical work experience.



LIBRARY AND ARCHIVE STUDIES VIDEO
Scan to watch our course video or use this link: uom.link/libraryvideo-24



DISCOVER LIBRARY AND ARCHIVE STUDIES
Scan to discover more about the course or use this link: uom.link/ma-las-24

The MA in Library and Archive Studies focuses on contemporary practices in collection-led librarianship and archival studies. It provides unique curriculum-based access to world leading special collections and comparative cultural institutions alongside a strong professional practice element in collaboration with The University of Manchester Library staff. This is a major multi-site research library with National Research Library status. It includes the stunning John Rylands Research Institute and Library

with its world-leading collections of archives and rare books and cutting-edge digital practices.

Students on the MA in Library and Archive Studies will have the opportunity to engage with a wealth of academic specialisms closely linked to Library and Archive Studies, in addition to benefitting from broad-ranging core courses centred on working with special collections. In addition, students will be offered a choice of optional courses in a variety of specialist topics

linked to digital practices, archives management, rare books curation, conservation, exhibition design and the social and inter-community impact of research libraries, as well as units linked to a variety of research specialisms such as in book history and palaeography.

This course consists of taught units and a dissertation. Taught units cover topics including:

- Strategic Library Management
- Libraries in Society
- Digital Infrastructures
- Developing Effective Services
- Engagement and Advocacy
- Special Collections Laboratory

These are example course units based on 2023/24 options and are subject to change each year.

Linguistics MA

12 MONTHS (FULL-TIME)

24 MONTHS (PART-TIME)



This course is a flexible programme that aims to explore the breadth and the depth of contemporary linguistics. It builds on the widest range of teaching and research expertise covering all aspects of theoretical and descriptive linguistics, including:

- Discourse and conversation analysis
- Data engineering and analytics
- Language typology and documentation
- Phonetics and phonology
- Syntax and morphology
- Semantics and pragmatics
- Sociolinguistics
- Psycholinguistics

Our academic staff also work on various practical applications of linguistics, e.g. Language Policy and Planning, Language in the Community, Forensic Linguistics, and Language Learning.

To discuss your pathway into and through the programme, reach out to the PGT Programme Director, Dr Vera Hohaus.

Find out more on our website:
www.manchester.ac.uk/study/masters/courses/

STUDENT QUOTE

"The University of Manchester is a place where I felt respected and cared for as a student and individual."

I have not only gained a degree, but also grown so much as a person in the short time I spent here! I found my passion during my time in Manchester, through my friends and professors."

Madhura Muralidharan - MA Linguistics

WHY MANCHESTER?



Gain a thorough grounding in the full breadth and depth of linguistic theory, in an environment that is home to world-leading research.



Access innovative resources, including psycholinguistics and phonetics laboratories with facilities for eye tracking, signal analysis, speech synthesis, laryngography and electropalatography.



Build the necessary intellectual skills to plan and carry out independent and innovative research.



Acquire quantitative skills for the analysis of linguistic data.

WHERE WILL YOUR DEGREE TAKE YOU?

Studying linguistics will equip you with a range of sought-after transferable skills, including written and oral communication skills, computer skills, skills of quantitative and statistical analysis, intercultural awareness, and research methods. This course will also develop skills that will be useful in undertaking postgraduate research.

Career destinations for our graduates include language teaching, language policy, speech and language therapy, data engineering and analytics, publishing, and marketing and communications.



LINGUISTICS VIDEO

Scan to watch our course video or use this link: uom.link/linguistics-video-24



DISCOVER LINGUISTICS

Scan to discover more about the course or use this link uom.link/linguistics-24

ACADEMIC SPOTLIGHT



Dr Vera Hohaus Lecturer in Linguistics and Director of the Psycholinguistics Laboratory

Dr Vera Hohaus is a Lecturer in Linguistics and the current PGT Programme Director. Her research investigates how meaning emerges from the interaction of syntactic structure, lexical information, composition principles and context. She is particularly interested in how far this interaction is subject to crosslinguistic variation, and in the repercussions of this variation for first language acquisition and processing.

Learn more: <https://verahohaus.com/>



Professor Delia Bentley Professor of Romance Linguistics

Professor Delia Bentley is a Professor of Romance Linguistics. Her principal research interest is in the interface of syntax with discourse and lexical meaning, which she explores on evidence from the microvariation attested synchronically in the grammars of the lesser-known Romance languages.

Learn more: uom.link/linguistics-delia

ALUMNI STORY



Alex now works as an Insight and Innovation Executive, which entails

using linguistic and psychological data to understand audience behaviour and motivations in a digital and societal setting.

Read his blog: uom.link/linguistics-alex

Medieval and Early Modern Studies MA

12 MONTHS (FULL-TIME)

24 MONTHS (PART-TIME)



This is an interdisciplinary course designed to equip you with the critical skills and tools necessary for research in the history, literatures and art of the Middle Ages and Early Modern periods. Working closely with the collections of the John Rylands Library makes our course particularly suitable if you're considering a future in heritage management, library, archive, or museum work, art business, or education.

Research in this area has a long and distinguished history at The University of Manchester and we have a lively culture, thanks to the support of the Centre for Medieval and Early Modern Studies (CEMS), which holds regular talks, seminars and conferences, in addition to taught courses. You'll be able to draw on the expertise of scholars engaged in research at the John Rylands Research Institute. The John Rylands Library houses exceptional medieval and early-modern treasures and offers many exciting research and study opportunities.

Two pathways are available for students who wish to extend their knowledge in a particular chronological direction: Medieval, and Early Modern.

This course consists of taught units and a dissertation. Taught units cover topics including:

- From Papyrus to Print: The History of the Book
- Reading the Middle Ages and Renaissance: Palaeography, Codicology, and Sources
- Perspectives on Medieval and Renaissance Studies
- Shakespeare: Theory and the Archive
- Old English: Writing the Unreadable Past
- Wonders, Miracles & Supernatural Landscapes in Medieval & Early Modern Europe

These are example course units based on 2023/24 options and are subject to change each year.

Find out more on our website: uom.link/pg-medieval

WHY MANCHESTER?



Benefit from access to extensive and excellent material research resources.



Study in Manchester, a living history book – from Peterloo and the anti-slavery movement, to Roman forts and medieval monuments.



The University of Manchester and John Rylands Libraries offer immense holdings of printed primary medieval sources and extensive holdings for early modernists.



Other collections include other papers of prominent scientists and academics, and collections in military, diplomatic, and colonial history.



Manchester's resources in medieval and early modern studies also include Chetham's Library, the oldest public library in the English-speaking world.

WHERE WILL YOUR DEGREE TAKE YOU?

This course is designed to equip you with the critical skills and tools necessary for research in the history, literatures, and art of the Middle Ages and Early Modern periods.

Having the opportunity to work in close contact with the collections of the John Rylands Library makes our course particularly suitable if you are considering a future in heritage management, library, archive, or museum work, art business, or education.

In addition to these professional career paths, other students go on to study for a PhD, with the degree proving an excellent basis for an academic career.



DISCOVER MEDIEVAL AND EARLY MODERN STUDIES
Scan to discover more about the course or use this link: uom.link/mems-24



Ranking

The University of Manchester is ranked in the top 10 for History and English Language and Literature programmes in the UK (QS World Rankings 2023)

ALUMNI STORY

Kit now works as a Trainee Reporter for Stoke-on-Trent Live and as a Freelance Shift Reporter for The Daily Star and The Daily Mirror.

Read more about his career since leaving the University here: uom.link/pg-salc-kit



Kit Roberts
MA Medieval and Early Modern Studies Graduate

STUDENT QUOTE

"The highlight of the course is getting to work closely with manuscripts from the John Rylands Library. Everything was virtual in 2020-2021, but even then, the John Rylands had a fantastic digital set-up that meant we still got to see manuscripts in real-time, with a librarian handling them for us."



Catrin Haberfield
Medieval and Early Modern Studies MA



MEDIEVAL AND EARLY MODERN STUDIES VIDEO
Scan to watch our course video or use this link: uom.link/mems-video-24

Modern and Contemporary Literature MA

12 MONTHS (FULL-TIME)

24 MONTHS (PART-TIME)



Our MA Modern and Contemporary Literature master's course offers an opportunity to become part of an exciting, intellectual group of researchers working in 20th and 21st century literature, culture and theory.

You'll undertake an intensive and challenging investigation of the literatures in this period, as well as units that introduce you to leading research in the broad field of modern and contemporary writing.

We focus theoretically on the relationships between texts and the various contexts in which they're produced and in which they circulate.

Through detailed engagements with the minutiae of aesthetic form, we consider the connections between aesthetic and political practice, with particular focus on representations and constructions of sexuality, class, gender and race.

This course consists of taught units and a dissertation. Taught units cover topics including:

- Postcolonial Literatures, Genre and Theories
- Modernisms
- Gender, Sexuality and Culture
- Reading the Contemporary
- Queer Cinema and Beyond

WHY MANCHESTER?



Study post-1900 literature in all its geographical, formal and thematic complexity and diversity.



Explore a variety of critical and theoretical approaches to modern and contemporary writing.



Become part of a community of active researchers working in the fields of contemporary writing, creative writing, modernism studies and postcolonial studies.



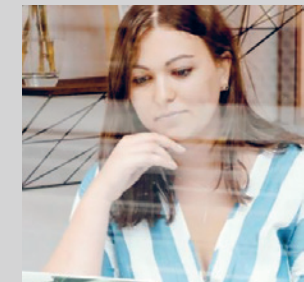
Discover the literary heritage and cultural assets of Manchester, a UNESCO City of Literature.

ALUMNI STORY

Ellie Dickinson
MA Modern and Contemporary Literature
Graduate Influencer and Marketing Executive

Ellie now works as an Influencer Marketing Executive for a PR agency specialising in influencer marketing for a variety of campaigns including: TikTok, Instagram and YouTube. She works on a variety of clients including Dulux, Tequila Rose and Fray Bentos.

Read more about her career so far here:
uom.link/pg-salc-ellie



WHERE WILL YOUR DEGREE TAKE YOU?

On completion of this course, many of our postgraduates continue their research to develop careers in academia.

However, career paths overall are extremely varied and skills are transferable.

The high standard of arts research training, both formal and practical, opens doors to many kinds of public and private sector graduate careers requiring research skills and the formulation of projects and policy documents.

You may also choose one or two units from another MA course, subject to the approval of the Programme Director.

These are example course units based on 2023/24 options and are subject to change each year.

Find out more on our website:
www.manchester.ac.uk/study/masters/courses/



DISCOVER MODERN AND CONTEMPORARY LITERATURE
Scan to discover more about the course or use this link: uom.link/modlit-24

Modern Languages and Cultures MA

12 MONTHS (FULL-TIME)

24 MONTHS (PART-TIME)



This course will prepare you for further research in constituent disciplines, but it's also relevant if you wish to broaden and deepen your critical engagement with a wide range of languages and cultures.

The structure of the MA is flexible, meaning that you can choose to combine your interests in different languages or cultures, or focus more exclusively on one particular area.

Taught units cover topics including:

- Arabic and Middle Eastern Studies
- Chinese
- French Studies
- German Studies
- Italian Studies
- Japanese Studies
- Russian and East European Studies
- Spanish, Portuguese and Latin American Studies

These are example course units based on 2023/24 options and are subject to change each year.

Find out more on our website:
www.manchester.ac.uk/study/masters/courses/

ALUMNI STORY

Joseph Sykes – MA Modern Languages Graduate now working as a Subtitler and Language-Learning Materials Author.

Joseph's career involves subtitling TV dramas, documentaries, films, and commercial material from French and German into English for various clients.

How has your degree helped you in your career?
"I use my French and German every day, so I directly apply the skills that I gained at Manchester to my work every day."

What did you most enjoy about your time at Manchester?
"I enjoyed the intimate nature of the languages department, and how everyone got on well there."

Why would you recommend the University as a good place to study?
"The facilities are excellent. There are societies for just about everything. It's a great city to live in."

WHY MANCHESTER?



Broaden and deepen your critical engagement with modern languages, cultures and their contexts.



Access a wealth of cutting-edge critical thinking.



Become an independent researcher, critical and creative thinker, and persuasive writer.



Benefit from the cultural diversity of Manchester – western Europe's most multilingual city.

WHERE WILL YOUR DEGREE TAKE YOU?

Our alumni have gone on to pursue successful careers in the arts and cultural sectors, and beyond, in professions including marketing, journalism, publishing, business politics, finance, and education.

The MA provides a thorough training in the expertise needed for further research, and many graduates have gone on to postgraduate research degrees and careers within academia.

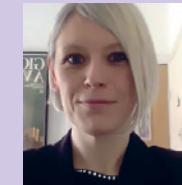


DISCOVER MODERN LANGUAGES
 Scan to discover more about the course or use this link uom.link/ma-languages-24



MODERN LANGUAGES VIDEO
 Scan to watch our course video or use this link: uom.link/video-languages-24

ACADEMIC SPOTLIGHT



Professor Erica Baffelli Senior Lecturer in Japanese Studies

Dr Erica Baffelli is a Senior Lecturer in Japanese Studies. Before arriving at Manchester, between

2005-2007, she was a visiting researcher at Hosei University (Tokyo) and post-doctoral research fellow of the Japan Society for the Promotion of Science. Her specialisms include: Japanese Religions, New Religious Movements, Religion and Media, Religion and Violence, and Contemporary Japan.

Read more: uom.link/erica



Dr Ignacio Aguiló Senior Lecturer in Latin American Cultural Studies

He is also the Co-Director of the University's Centre for Latin American and Caribbean Studies.

His specialisms include: Race in Contemporary Latin American Culture, Popular Culture and Kitsch, Visual Culture, Popular Music, Decolonial/Post-Development Theory, and Digital Anthropology.

Read more: uom.link/ignacio



Dr Barbara Lebrun Senior Lecturer in Contemporary French Politics and Culture

She is also the editor of Chanson et Performance (L'Harmattan, 2012),

a French-language collection focusing on gender performance in French and francophone popular music. Her specialisms include: French Culture, Popular Culture, Popular Music, and Chanson.

Read more: uom.link/barbara

Music MusM

12 MONTHS (FULL-TIME)

24 MONTHS (PART-TIME)



Underpinned by highly regarded traditions of academic research, composition and performance, Music at The University of Manchester offers a cutting-edge academic programme led by world-leading researchers, together with opportunities for practical music-making.

FACILITIES

The Martin Harris Centre offers students an exceptional home equipped with state-of-the-art facilities.

Alongside teaching rooms and practice rooms, the building houses the Cosmo Rodewald Concert Hall (capacity 350, with a stage large enough to accommodate a full symphony orchestra), the John Thaw Studio Theatre, the Lenagan

Library and a postgraduate suite consisting of a common room and computer room.

The brand-new practice building houses 13 Amadeus M-Pods, including a large ground-floor practice pod for ensemble or band use. Each pod is fully self-contained, featuring adjustable climate control and professional sound proofing. The pods are each equipped with a brand-new Yamaha upright and are available 24/7 throughout the year.

The Henry Watson Library is located in Manchester's Central Library and is renowned for its Handel and Vivaldi manuscripts. Students also have use of the library of the nearby Royal Northern College of Music.

WHY MANCHESTER?



Enjoy a strong focus on theory, debates in ethno/musicology, and world music studies.



Develop advanced research skills and presentational techniques suitable for doctoral study or applied work.



Study in a city that is home to more professional music-making than any UK city outside of London, with three professional orchestras and internationally recognised institutions such as the BBC and Opera North.



Ranking

Study at a Top 5 UK University for Music
(Complete University Guide 2024)



DISCOVER MUSIC

Scan to discover more about our MA Music courses or use this link uom.link/musmcourses-24

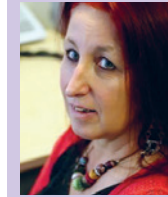
STUDENT SPOTLIGHT

Marion Smith, a student of MusM Music (Ethnomusicology) shares with us some insights into her time at Manchester.

Read her blog post: uom.link/musicmarion-24

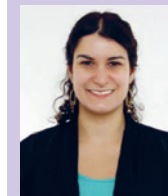


ACADEMIC SPOTLIGHT



Prof Caroline Bithell – Professor of Ethnomusicology

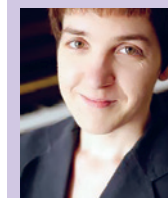
Prof Caroline Bithell teaches a range of course units in Ethnomusicology. With an academic background in music, social anthropology and languages, she holds degrees from the universities of Oxford and Wales. Caroline is best known in the ethnomusicology world and beyond for her publications on the traditional musics of Corsica and Georgia (Caucasus), music revivals, and the natural voice and community choirs.



Dr Chloë Alaghband-Zadeh – Lecturer in Ethnomusicology

Dr Chloë Alaghband-Zadeh is an ethnomusicologist, specialising in music in contemporary South Asia and the South Asian diaspora. Her research

explores the intersections between musical sound, ways of listening and structures of power. Before coming to Manchester, she held a three-year Research Fellowship at Emmanuel College, Cambridge.



Prof Rebecca Herissone – Professor of Musicology

Prof Rebecca Herissone is a Professor of Musicology. She was made a Fellow of The British Academy in 2019, one of the highest

distinctions in the humanities. Her specialisms include: Purcell and seventeenth-century English music; Creativity in Early Modern Music; Early Modern Manuscript and Print Cultures; Ontological Issues Relating to Baroque Music; Baroque Performance Practice; and English Music Theory 1580-1730.

Read more about our Music team: uom.link/musicstaff-24

Music (Ethnomusicology) MusM

12 MONTHS (FULL-TIME)

24 MONTHS (PART-TIME)



This course offers a stimulating master's-level foundation in ethnomusicology. With a strong focus on theory, methodology and current debates in the discipline, together with appropriate research techniques and presentation styles, it offers excellent preparation for doctoral study, and also for applied work.

Together, the taught units encompass a wide range of topics and approaches, including:

- Gender and Ethnicity
- Music and Conflict
- Music Revivals and Performance Culture
- Postcolonial Theory and the Politics of Ethnography

These are example course units based on 2023/24 options and are subject to change each year.

Find out more on our website:
www.manchester.ac.uk/study/masters/courses/

WHERE WILL YOUR DEGREE TAKE YOU?

Our graduates have pursued successful careers in musical and non-musical fields. Some continue to further study via a PhD before securing an academic position. Some go on to teach in schools or further education, both in the UK and overseas.

Other areas of work for which advanced musical training has been directly relevant include: arts management and the culture industries, producing, music publishing, music, journalism, librarianship, music therapy, and performance. Careers outside of music have included: accountancy, law, social work, and human resources.

Some graduates have gone on to work for companies that include The Old Vic, NHS, Orchestras Live, and BBC.

STUDENT QUOTE

"The highlight of my course has been working on the original research/dissertation component of the course, in which you focus on a topic of your choosing. For my dissertation, I've carried out ethnographic interviews with indie world music record labels, gaining perspectives on their work and its ethical implications. This has been very interesting and rewarding, tying into the themes and issues covered in the taught modules."

Arthur Dickinson –
MusM Music
(Ethnomusicology) Student

Music (Musicology) MusM

12 MONTHS (FULL-TIME)

24 MONTHS (PART-TIME)



This course offers an engaging and rigorous master's level in musicology. With a strong focus on theory, methodology and current debates in the discipline, together with appropriate research techniques and presentational styles, it offers excellent preparation for doctoral study and also for a wide range of careers.

The taught units encompass a wide range of topics and approaches, including:

- Music Criticism
- Musicology as Cultural History
- Music and Politics
- Source Studies and Performance Practice
- Postcolonial Theory and Ecomusicology
- Gender and Queer Theory
- Popular Music Studies

These are example topics and approaches based on 2023/24 options and are subject to change each year.

Find out more on our website:
www.manchester.ac.uk/study/masters/courses/

WHERE WILL YOUR DEGREE TAKE YOU?

Our graduates have pursued successful careers in musical and non-musical fields. Some continue to further study via a PhD before securing an academic position. Some go on to teach in schools or further education, both in the UK and overseas.

Other areas of work for which advanced musical training has been directly relevant include: arts management and the culture industries, producing, music publishing, music, journalism, librarianship, music therapy, and performance. Careers outside of music have included: accountancy, law, social work, and human resources.

Some graduates have gone on to work for companies that include The Old Vic, NHS, Orchestras Live, and BBC.

Read our graduates' profiles:
uom.link/musmgraduates-24

STUDENT QUOTE

"The course here at Manchester manages to achieve a perfect balance between establishing holistic foundations and encouraging personal specialisation...The coursework assignments present challenging, open-ended questions that really encourage original thinking."

MusM Music
(Musicology) Student

STUDENT QUOTE

"I would describe my student experience so far as new discoveries every day. As an international student, I had a great experience at The University of Manchester. Every teacher is very responsible and I am very grateful to the teachers who helped me grow."

Yunqi Zhao – MusM Music
(Musicology) Student



Music Composition MusM

12 MONTHS (FULL-TIME)

24 MONTHS (PART-TIME)



Underpinned by highly-regarded traditions of performance, composition and academic research, Music at The University of Manchester combines specialist education in practical music-making with an academic programme led by world-leading researchers.

FACILITIES

You will have access to a wide range of study facilities and cultural organisations in Manchester.

The £2.25M state-of-the-art Electroacoustic studios, home of NOVARS Research Centre, support a broad range of activities in the fields of interactive media technologies for digital screening and electroacoustic composition including game-audio, live electronics, VR/AR/XR and real-time cinematography. The studios incorporate the newest generation of Apple computers, PCs for advanced Artificial Intelligence training and video-gaming, a complete Dante/Focusrite audio network system for studio connectivity, 58-speaker system including Genelec, PMC and ATC monitoring (up to 37-channel studios), and licensed software including Pro Tools HD, Max, GRM Tools, Waves, TouchDesigner, Kaleidoscope, Reaper, newest Oculus Quest, Unreal Engine 5, Unity3D and Genesis for Physical modelling. It is also home for one of the world's largest Hordijk analogue synthesizers, fully integrated with NOVARS digital studio. Location and performance work is also supported by a new 64-channel diffusion system. The Martin Harris Centre offers students an exceptional home quipped with state-of-the-art facilities.

Alongside teaching rooms and practice rooms, the building houses the Cosmo Rodewald Concert Hall, the John Thaw Studio Theatre, The Lenagan Library, and a postgraduate suite consisting of a common room and computer room.

The Henry Watson Library is located in Manchester's Central Library and is renowned for its Handel and Vivaldi manuscripts, and the library of the nearby Royal Northern College of Music.

STUDENT SPOTLIGHT

Windja (Vinytha) Perinpanatha, a student of the MusM in Composition (Instrumental and Vocal Music) shares with us some insights into her time at Manchester.

Read her blog post:
uom.link/muswindja-24



WHY MANCHESTER?



Numerous opportunities to have your music workshopped and/or performed by professional musicians, including Psappha, Quatuor Danel, Distractfold, Trio Atem, Vonnegut Collective, and many more. Additional opportunities for collaboration due to outstanding level of performance from undergraduate instrumentalists and vocalists.



Learn in state-of-the-art facilities, including our dedicated electroacoustic studio complex.



Postgraduate students at the NOVARS Research Centre play an active role in the planning, organisation and execution of performance events such as the Sines & Squares Festival, MANTIS Festival, and other projects such as LocativeAudio.



Study in a city that is home to more professional music-making than any UK city outside of London.



Ranking

Study at a Top 5 UK University for Music
 (Sunday Times Good University Guide 2023)

STUDENT SPOTLIGHT

Renaldo Ramai, a student of the MusM in Composition shares with us some insights into his time at Manchester.

Read his blog post:
uom.link/musrenaldo-24



ACADEMIC SPOTLIGHT



Prof Ricardo Climent
 Professor of Interactive Music Composition

Prof Ricardo Climent is a Professor of

Interactive Music Composition, where he started NOVARS in 2007 and has served as a director since then. He has created and promoted research synergies across areas of Interactive Media, Live Game-Audio, Analogue Synthesizers, Audification (Sonification) and Machine Learning for Music.



Dr Richard Whalley
 Senior Lecturer in Musical Composition

Dr Richard Whalley is a Senior Lecturer in

Musical Composition at The University of Manchester. His compositions are noted for their combination of timbral and textural exploration, their varied approach to line and for their formal innovation. Many are inspired by extra-musical sources, including the physicality of paintings and sculptures, the evocation of time and memory in literature, and increasingly in finding musical analogies for geological processes, and for the shapes found in nature.

Read more about our Music team:
uom.link/musicstaff-24

Composition (Electroacoustic Music and Interactive Media) MusM

12 MONTHS (FULL-TIME)

24 MONTHS (PART-TIME)

This course provides an in-depth knowledge of cutting-edge compositional techniques, methodologies and associated aesthetics in creative work that intersects with technology and other artistic or scientific forms. It serves as excellent preparation for a career as a composer working with technology and audio-media, and provides all the training necessary for embarking on and envisioning novel strands for a PhD.

Together, the taught units encompass a wide range of topics and approaches, including:

- Fixed Media and Interactive Music
- Aesthetics and Analysis of Organised Sound
- Interactive Tools and Engines
- Contemporary Music Studies
- Advanced Orchestration
- Historical or Contemporary Performance



These are example course units based on 2023/24 options and are subject to change each year.

Find out more on our website:
www.manchester.ac.uk/study/masters/courses/

WHERE WILL YOUR DEGREE TAKE YOU?

Our graduates have pursued successful careers in music, media and in the creative industries but also started successful entrepreneurial journeys. This programme is known for its high conversion rate to PhD studies before securing an academic position. Some go on to teach in schools

or further education, both in the UK and overseas.

Other popular career routes include composing for film (e.g. for a leading Netflix series), sound designer for a word-leading video game studio in Japan, professional studio engineer, geolocate media spin-outs, music publishing, music journalism, and performance. Careers beyond music included jobs in computer programming, theatre, museums, accountancy, law, social work, and human resources.

ALUMNI STORY

Sarah Kierle – MusM Composition (Electroacoustic Music and Interactive Media) Graduate

Sarah now works as a PhD Researcher/Freelance Composer/ECHOES Project Assistant. As a Freelance

Composer, she has been commissioned by arts charities and exhibitions to create electroacoustic works and sound installations. As a Project Assistant at ECHOES, she facilitates the creation of geolocate audio apps and experiences.



Read her blog post: uom.link/mussarah-24

Composition (Instrumental and Vocal Music) MusM

12 MONTHS (FULL-TIME)

24 MONTHS (PART-TIME)

This course offers intensive training for composers and provides excellent preparation for doctoral work or a career in the professional world. With a strong focus on practical music-making and supported by an outstanding programme of workshops and performances by professional musicians, it offers an invaluable opportunity for composers to hone their skills and develop their personal voice.

Together, the taught units encompass a wide range of topics and approaches, including:

- Contemporary Music Studies
- Advanced Orchestration

- Aesthetics and Analysis of Organised Sound
- Interactive Tools and Engines
- Historical or Contemporary Performance

These are example course units based on 2023/24 options and are subject to change each year.

Find out more on our website:
www.manchester.ac.uk/study/masters/courses/

WHERE WILL YOUR DEGREE TAKE YOU?

Our graduates have pursued successful careers in musical and non-musical fields. Some continue to further study via a PhD before securing an academic position. Some go on to teach in schools

or further education, both in the UK and overseas.

Other graduates have gone on to work in fields which advances compositional training has been directly relevant such as: music producing, music composition, audio production, recording studios, entrepreneurship, the creative industries, music publishing, music journalism, and performance.

Careers outside of music have included computer programming, theatre, accountancy, law, social work, and human resources.

Read our graduates' profiles:
uom.link/musmgraduates-24

STUDENT QUOTE

"The highlight of my Master's course was being able to meet and learn from outstanding composers on a regular basis. Weekly supervisions with my Professor were incredibly insightful and constructive. His feedback, and comments from other lecturers, encouraged me to explore new musical styles and experiment with intriguing compositional techniques."

Murrough Connolly - MusM Composition (Instrumental and Vocal Music Student)

ALUMNI STORY

"I'm a composer of notated music – I've written pieces for BBC Symphony Orchestra, Mahler Chamber Orchestra, Britten Sinfonia and the Philharmonia, and am currently working on commissions for BBC Philharmonic Orchestra and London Sinfonietta. My studies at The University of Manchester were absolutely crucial to my development as a composer – I received inspiring and meticulous tuition on my pieces, was part of a rewarding community of composers, and benefitted from the University's admirable emphasis on giving performance opportunities for composers."



Tom Coult, MusM Composition Graduate, now working as a Composer at Faber Music

Music (Performance) MusM

12 MONTHS (FULL-TIME)

24 MONTHS (PART-TIME)



MusM (Performance Studies) will prepare you for a portfolio career in music performance in the rapidly diversifying post-pandemic music making scene. You will develop an advanced understanding of the interpretation of music and technical expertise, whether through analysis, historical research, cultural critique, artistic research or performance.

You will develop as multifaceted musicians with pedagogical and professional skills, and have the opportunity to engage in community music performance practices as socially conscious artists.

You will be able to choose units that best match your special interests and aspirations. Taught units cover topics including:

- Advanced Music Studies: Research Skills in the Digital Age
- Performance Portfolio
- Contemporary Music Studies
- Advanced Orchestration
- Business Strategies for the Arts
- Popular Music and Identity

These are example course units based on 2023/24 options and are subject to change each year.



DISCOVER MUSM PERFORMANCE
Scan to discover more about the pathway or use this link:
uom.link/musmperformance-24

Find out more on our website:
www.manchester.ac.uk/study/masters/courses/

WHERE WILL YOUR DEGREE TAKE YOU?

Our graduates have pursued successful careers in musical and non-musical fields. Some continue to further study via PhD before securing an academic position. Some go on to teach in schools or further education, both in the UK and overseas.

Other areas of work for which advanced musical training has been directly relevant include arts management and the culture industries, producing, music publishing, music, journalism, librarianship, music therapy and performance. Careers outside of music have included accountancy, law, social work and human resources.

Some graduates have gone on to work for companies that include The Old Vic, NHS, Orchestras Live, and the BBC.

The University has its own dedicated Careers Service that you would have full access to as a student and for two years after you graduate.

MUSIC IN MANCHESTER

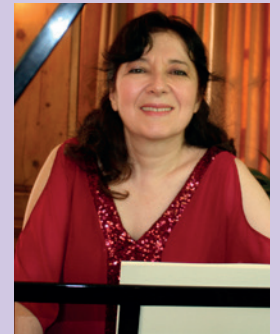
Manchester is home to the world-famous Hallé and BBC Philharmonic orchestras, which both perform at the purpose-built concert venue Bridgewater Hall. You can also see major international artists at Manchester Arena and other stadia or see independent and upcoming musicians at venues such as Band on the Wall.



Study in a city that is home to more professional music-making than any UK city outside of London, with three professional orchestras and internationally recognised institutions such as the BBC and Opera North.

ACADEMIC SPOTLIGHT

Professor Mine Doğantan-Dack,
Director of MusM
Performance Studies



"I am delighted to introduce our new, cutting-edge Master's course in Music Performance Studies, designed with the specific aim of preparing music performance students for portfolio careers. You will be part of a thriving artistic and academic community and learn from performers and scholars recognised internationally for their excellence in their fields of expertise. You will acquire the skills to carve out flexible career paths in music performance and to combine, in personally meaningful ways, the roles of educator, artist, researcher, entrepreneur, cultural and community leader, humanist and public scholar. Our MusM in Music Performance Studies is the right programme for you if you are passionate about music performance and wish to develop advanced skills and knowledge in this most rewarding arts discipline."

Mine Doğantan-Dack is a musicologist and a concert pianist. She studied at the Juilliard School and holds a PhD from Columbia University. Her books include *Mathis Lussy: A Pioneer in Studies of Expressive Performance* (2002), the edited volumes *Recorded Music: Philosophical and Critical Reflections* (2008) and *Artistic Practice as Research in Music* (2015), and a volume titled *Music and Sonic Art: Theories and Practices* (2018).

Playwriting MA

12 MONTHS (FULL-TIME)



Our MA Playwriting course is an intensive one-year programme designed to provide a genuine gateway into a writing career in the theatre and performance industries.

Over the course of the year, you will work with leading industry practitioners to develop your playwriting, pitching and dramaturgical skills.

By the end of the course, you will have developed at least one full-length stage play, a collection of one-act dramas, a full-length festival play and at least one play that adapts elements of a classic text to engage with a contemporary context.

You will have access to individual career guidance and training in how to navigate entry-level writing work in the theatre and performance industries. The course features regular speakers

from the industry, including returning alumni who have established successful careers as writers, dramaturgs and producers.

In Semester 1, you will study the basics of playwriting as a craft, with a focus on form and structure. This will include engaging with plays in textual form and in live performance, and the study of plot/story, character, genre, scene development, monologue and dialogue, dramatic action, beginnings, endings, features of staging and audience relationship.

In the second semester, we turn to industry-oriented study, focusing on developing new pieces for festival contexts, and on the skills and resiliencies needed to sustain a living in playwriting.

WHY MANCHESTER?



Work with active leading playwrights Anders Lustgarten, Chloe Moss and Tim Price, as well as attending seminars with Jeanette Winterson.



Develop skills in writing for performance across a diverse range of contexts, genres and themes.



Benefit from the dynamic theatre scene in Manchester and our partnerships with major institutions Royal Exchange, Contact and HOME.



The Martin Harris Centre for Music and Drama boasts state-of-the-art equipment and facilities, including the John Thaw Studio Theatre, and the specialist subject collections of the Lenagan Library.



The Centre for New Writing has a strong track record of creative writing, and we have one of the leading Drama departments in the UK.

There will be an industry day based at our studio theatre on campus, with talks from directors, agents, dramaturgs, publishers, literary officers and writers.

This is a hands-on course, involving four taught units and a dissertation. Taught units, assessed by plays and reflective pieces, include:

- Playwriting and form
- Playwriting and structure
- The Festival Play
- The Working Playwright

These are example course units based on 2023/24 options and are subject to change each year.

Find out more on our website:
www.manchester.ac.uk/study/masters/courses/

ACADEMIC SPOTLIGHT



Chloë Moss

Chloë Moss is an accomplished playwright and screenwriter. Her celebrated play

This Wide Night 2008/2009 (Clean Break, Soho) won the prestigious Susan Smith Blackburn prize and was subsequently produced off Broadway, starring Edie Falco. Chloë has written numerous other shows including The Gatekeeper 2012 (Royal Exchange Theatre), Fatal Light 2010/2011 (Soho Theatre) and Christmas is Miles Away 2005/2006 (Bush theatre and off Broadway).

Learn more: uom.link/chloemoss-24



DISCOVER PLAYWRITING
Scan to discover more about the course or use this link: uom.link/maplaywriting-24

WHERE WILL YOUR DEGREE TAKE YOU?

We will prepare you for a successful career in playwriting and writing for performance, and you'll have access to individual career guidance and training to help you secure work. The industry focus of the programme ensures that you will be equipped with the practical knowledge to manage your career as a writer, and the ability to pitch your own initiatives, as well as work both as an individual writer and collaboratively with others. Additional possible career paths include work as literary officers and agents, and within publishing, art journalism, dramaturgy and producing

You can read more about the alumni throughout our Drama department here: uom.link/drama-alumni-24

Religions and Theology MA

12 MONTHS (FULL-TIME)

Our MA Religions and Theology course is aimed at both specialists who want to deepen their knowledge and skills, and graduates of other disciplines who want to switch to postgraduate-level study of this subject. You'll explore religion and theology in their historical, contemporary and political contexts, uncovering how they continue to influence the world in which we live today, and determining your own study pathway throughout.

This course is designed to enable you to either take units covering a broad range of religious, theological and philosophical traditions, or concentrate your study in an area that interests you.

This includes:

- Christian Theology and Politics
- Ethnic Minorities and Religious Identities
- Bible and Early Jewish Texts
- Relations Between Jews, Christians and Muslims
- New Testament in Graeco-Roman Context
- Philosophy of Moral Decision-Making

24 MONTHS (PART-TIME)



These are example course units based on 2023/24 options and are subject to change each year.

Find out more on our website:
www.manchester.ac.uk/study/masters/courses/



STUDENT QUOTE

"I wanted to expand my knowledge of historical and Jewish Studies subjects whilst developing my research and

essay skills. The MA proved to be an ideal choice. It encourages people from a wide age range and differing social/professional backgrounds to engage together in a stimulating and rewarding environment."

Rob Kanter, MA Religions and Theology Graduate

ALUMNI STORY

Caitlin Gaslawski
MA Religions and Theology Graduate
Philanthropy and Alumni Engagement Officer

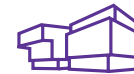
Caitlin is a fully qualified Careers Leader and Guidance Counsellor who has moved to working in Philanthropy and Alumni Engagement at an alpine boarding school in Switzerland, in the mountains, where she relocated to in August. Her primary role is devoted to creating a community of alumni who give back with their time, through mentoring students and coming back to school, and financially to support the school and future scholarship students.

Read more about her career so far: uom.link/religionscaitlin-24

WHY MANCHESTER?



Take advantage of specialist teaching in ancient and modern languages.



Enjoy exclusive access to world-class resources for research, including the archives of the John Rylands Library.



Study at a Top 10 UK University for Religions and Theology.
(Guardian University Guide 2023)



Benefit from having the vibrant multi-faith city of Manchester on your doorstep.

WHERE WILL YOUR DEGREE TAKE YOU?

We aim to give our students research skills, whether for academic work or for another career, as many professions today require investigative skills.

Many in museums, libraries and other archives require the textual and historical research skills that our courses teach. For some, our course acts as a gateway for leading academic or professional careers in the media, public service or the voluntary sector. For others who are already professionals in school RE teaching, religious ministry or other areas, our course brings a new level of expertise and confidence to their work.



DISCOVER RELIGIONS AND THEOLOGY
Scan to discover more about the course or use this link: uom.link/religions-24



RELIGIONS AND THEOLOGY VIDEO
Scan to watch our course video or use this link: uom.link/religionsvideo-24

ACADEMIC SPOTLIGHT



Dr Michael Hoelzl – MA Program Director

Dr Michael Hoelzl is a senior lecturer in Political Philosophy and Religion and the MA Program Director for Religions and Theology.

His research interests include social ethics, political theology, philosophy of law with an emphasis on Schmittian studies, theories of secularisation and the new visibility of religion.

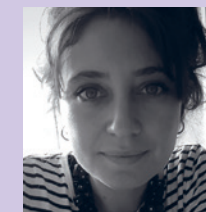
Learn more: uom.link/michaelhoelzl-24



Prof Daniel Langton

Prof Daniel Langton is the Head of the Department of Religions and Theology, Co-director of the Centre for Jewish Studies (CJS), and a co-editor of the journal Melilah. In relation to teaching, he was a recipient of The University of Manchester's Teaching Excellence Prize in 2006 and a nominee for the Student Union's Humanities Best Lecturer award in 2017.

Learn more: uom.link/daniellangton-24



Dr Holly Morse

Dr Holly Morse is the co-founder of the Bible, Gender and Church Research Centre, with Dr Kirsi Cobb of Cliff College. Her ongoing research interests include the

Hebrew Bible, gender, visual arts, female biblical interpretation, and hermeneutics. I have written on biblical literature, gender, trauma, abuse and the visual arts (see publications page for more information).

Learn more: uom.link/hollymorse-24

Screenwriting MA

12 MONTHS (FULL-TIME)



The only course of its kind offered by an elite Russell Group university, MA Screenwriting is a small, highly selective course. This intensive one-year MA will develop the writer's voice, embed professional practice and enhance graduate employability across UK and global film and television industries. MA Screenwriting is industry and vocationally focused throughout, developing creative, entrepreneurial, collaborative and professional skills. It is taught by professional screenwriters and experienced educators Tim Price and Jonathan Hourigan. The course also includes either an internship at a production company or a professional mentor during the second semester.

By the end of the course, you'll have developed a feature film screenplay, a pilot TV episode, reader's reports, adapted scenes, and two short films. You'll analyse screenplays, produce script reports and study story design, visual story-telling and character development in both feature films and long-running television series. You'll acquire and develop the tools to analyse, initiate, develop and market screenplays to a professional standard.

Course units include:

- Industry and Feature film
- Story and the Journey of Change
- The Calling Card Script and Television
- Genre and Theme

These are example course units based on 2023/24 options and are subject to change each year

Find out more on our website:
www.manchester.ac.uk/study/masters/courses/



DISCOVER SCREENWRITING
 Scan to discover more about the course or use this link: uom.link/screenwriting-24

WHY MANCHESTER?



Study on an intensive year-long course with a combination of workshops, seminars and one-to-one teaching.



Gain hands-on experience and networking opportunities with an internship at a production company or with a professional screenwriting mentor.



Work with industry experts to develop your screenwriting and hone the skills you need to succeed in film and television production.

WHERE WILL YOUR DEGREE TAKE YOU?

This course is designed to prepare graduates to work in the UK and global film and television industries.

Some will work as professional screenwriters, while others may take up related roles in development or production.

You can read profiles of some of our recent graduates to find out where they ended up working after completing the course - including two graduates who now work on Hollyoaks - on our student spotlights page.



SCREENWRITING VIDEO
 Scan to watch our course video or use this link: uom.link/screenwritingvideo-24

ACADEMIC SPOTLIGHT

Jonathan Hourigan, Programme Director MA Screenwriting

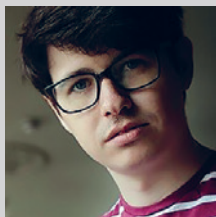


Jonathan Hourigan is a screenwriter, script consultant and educator. He joined the Centre for New Writing in September 2022 as Programme Director for MA Screenwriting, after four years as Course Leader for MA Screenwriting and Head of Screenwriting at London Film School.

Jonathan is a graduate of the National Film and Television School. He worked as assistant to Robert Bresson on the latter's Cannes prize-winning final film, L'ARGENT and is co-chair of the conference, NOTES ON BRESSON. Recent writing credits include BRING THEM DOWN and AT THE DOOR OF THE HOUSE WHO WILL COME KNOCKING. He plays Head of Script in Joanna Hogg's critically acclaimed SOUVENIR I and II.

ALUMNI STORY

David Rattigan
 MA Screenwriting
 Signed to Curtis Brown



"For the longest time I've wanted to pursue a career in writing, but before discovering the MA, I wasn't exactly sure how to go about it. I feel I know a remarkable amount now about the business, how it operates and where I will hopefully fit into it."

Read more about David's career so far here:
uom.link/screenwritingdavid-24

ALUMNI STORY

Katie Lythgow
 MA Screenwriting
 Writer at Hollyoaks



"If you want a career in TV/film and don't know where to start, I would recommend the MA for the insight it gives into the industry. It's not a typical academic course - it's very vocational and is focused on preparing you for a job."

Read more about Katie's career so far here:
uom.link/screenwritingkatie-24

Translation and Interpreting Studies MA

12 MONTHS (FULL-TIME)

24 MONTHS (PART-TIME)



This course is ideal if you are considering a career in language services. It aims to equip you with the knowledge and skills you'll need to work in translation or in other professions that require expertise in intercultural communication.

We provide specialised translation tuition for any language combination with English. Practical training is also provided in translation technologies, including subtitling tools, translation memory, terminology management, and machine translation.

Taught units cover topics including:

- Commercial Translation
- Audio-visual Translation
- Literary Translation
- Translation Project Management
- Technical Translation
- Translating for International Organisations
- Dialogue Interpreting for Business and Public Services

These are example course units based on 2023/24 options and are subject to change each year.

ALUMNI STORY

Guo Yu
MA Translation and Interpreting Studies

Graduate now working in Game Localisation Management, shares with us some insights into her time at Manchester and how it has helped her career so far.

Read her blog post:
uom.link/translation-quo



ALUMNI STORY

Dot Roberts
MA Translation and Interpreting Studies

Graduate now working as a Translator and Subtitler, shares with us some insights into her time at Manchester and how it has helped her career so far.

Read her blog post:
uom.link/pg-salc-dot



WHY MANCHESTER?



Gain confidence in using the latest technologies, including machine translation, subtitling, translation memory and terminology management software.



Prepare for a career in the language services sector or for doctoral study.



Explore key theoretical concepts and apply them in the study and analysis of translation and interpreting.

WHERE WILL YOUR DEGREE TAKE YOU?

Many of our graduates begin careers in translation and interpreting, whilst others have pursued roles in subtitling, marketing, film production and distribution, publishing, media, and international business. Some graduates also pursue careers in academia.

Graduates have found employment at UN agencies, Translators without Borders, The British Council, The Hut Group, Capita Translation and Interpreting, universities in the UK and around the world, and other translation agencies.



DISCOVER TRANSLATION AND INTERPRETING STUDIES
Scan to discover more about the course or use this link uom.link/translation-24

ACADEMIC SPOTLIGHT

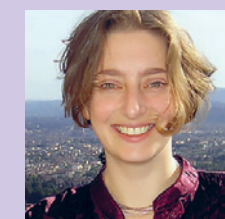
Dr Maeve Olohan – Senior Lecturer in Translation Studies



Dr Maeve Olohan is a Senior Lecturer and Co-Director of the Centre for Translation and Intercultural Studies, a leading research centre. Her specialisms include: Sociology of Translation, Translation Technologies; Scientific Translation, Corpus-Based Translation Studies, and Translation History.

Learn more: uom.link/maeve-olohan

Dr Anna Strowe – Lecturer in Translation and Interpreting Studies



Dr Anna Strowe is a Lecturer in Translation and Interpreting Studies. She is interested in the intersections between book history and translation. Her specialisms include: Translation Theory, Power and Translation, Book History, and Literary Translation.

Learn more: uom.link/anna-strowe



TRANSLATION AND INTERPRETING STUDIES VIDEO
Scan to watch our course video or use this link: uom.link/translation-video-24

How to apply



HOW TO APPLY

Read all about our application process for Master's degrees here:
uom.link/apply-pg

WHEN SHOULD I APPLY?

Applications for September 2024 entry are processed from October 2023 onwards. You can apply before you complete your undergraduate studies – make sure you include your latest transcripts with your supporting documents. We recommend that you apply as early as possible.

Specific entry requirements for all master's courses can be found on the course profile:
uom.link/pgp-pgt-courses

STAGED ADMISSIONS

The courses below are high demand and we operate a staged admissions process with selection deadlines throughout the year:

- MA Creative and Cultural Industries
- MA Digital Media, Culture and Society
- MSc Humanitarianism and Conflict Response
- MSc International Disaster Management
- MA Intercultural Communications
- MA Translation and Interpreting Studies

ENGLISH LANGUAGE REQUIREMENTS

If English is not your first language, you need to take an English language test to demonstrate your level of ability.



THE APPLICATION PROCESS STEP BY STEP

1

Visit your course profile

uom.link/salcmasters

2

Check the latest fees and admissions information, including English language requirements

3

Complete and submit the online application form with any supporting documents

4

The final decision will be made by the Admissions Office, who will contact you directly

CAREERS

Your future

Manchester graduates are the most targeted by top UK employers (High Fliers 2023). Our award-winning Careers Service, exceptional alumni networks, volunteering opportunities and other industry-leading tools and services are here to help you launch your career beyond Manchester.

SUPPORT AND RESOURCES

- **Postgraduate career workshops:** learn about the range of careers available to you and how to find one that matches your skills and experience.
- **Professional careers consultants:** tailored, one-to-one support.
- **Career networks:** we have one of the largest alumni networks in the UK with thousands of professionals ready to answer your questions.
- **Online career resources for postgraduates:** we offer career planning advice and a dedicated website for master's students on academic careers.

INTERNATIONAL CAREERS COUNSELLING

We provide specialist resources, advice and events for international students to help with career planning and making the most of your time while studying at Manchester.

Get dedicated support with achieving your goals whether these are overseas or in the UK, where post-study work options include the Graduate Route and Start-up visas.

OPPORTUNITIES

- **Meet employers:** our close contacts and collaborations with companies and employers mean we have strong relationships with a wide variety of organisations. More than 600 recruiters engage with students each year through on-campus and online events.
- **Make connections:** connect with alumni, academics, employers and fellow postgraduates from all over the world. Whether it's networking with NGOs or meeting hundreds of other researchers at our annual PhD careers event, you'll be encouraged to stretch yourself and fulfil your potential.
- **Become part of our community:** get involved in volunteering initiatives or communicate your passion for your research via our public engagement programmes.
- **Shape your future:** access support and training to help you gain the skills, knowledge and attributes that will stay with you for the rest of your life.



Find out more:
uom.link/pg-careers

Access our support

We want you to enjoy Manchester postgraduate life to the fullest. That's why we offer you experienced, specialist support services to boost your academic and personal development.

If you're worried about any issues relating to your studies, money, health or wellbeing, you can get in touch with:

- Support staff in your academic School;
- ResLife teams who live in halls – your first port of call in university-managed accommodation;
- Students' Union independent professional advisers; trained university counsellors;
- Nightline – an anonymous telephone helpline run by students.

Find out more: uom.link/studentsupport

DISABILITY SUPPORT

If you have additional needs arising from a medical condition, physical or sensory disability, specific learning disability such as dyslexia, or mental health difficulty that affects your studies, we can support you. You can register with our Disability Advisory and Support Service as soon as you receive an offer, meaning we can support you in the lead-up to joining us and ensure everything you need is in place when you arrive.

Get in touch with our Disability Advisory and Support Service:
www.dass.manchester.ac.uk

PERSONAL SAFETY

We have security services, systems and practical safety advice to help keep you and your property safe. You'll benefit from:

- CCTV and 24/7 security services across campus and university accommodation;
- Practical safety advice and support from university staff and Greater Manchester Police.

Find out more: uom.link/security



IMMIGRATION AND VISA ADVICE

Our Student Immigration Team provide information and advice for prospective and current Manchester students.

Email: visa@manchester.ac.uk

Find out more: uom.link/studentimmigration

CHILDCARE

Studying while caring for children can be a challenge. It's good to know that you've got local support.

- We have two nurseries for children aged between six months and five years – get in touch early to join a waiting list.
- Get involved with our Student Parents and Carers networks run by the Students' Union, who can also offer advice and support.

RELIGIOUS SUPPORT

If you want to find out about local faith organisations, explore issues of faith or discuss a problem with a member of your faith, you will find a diverse community of contacts available, including:

- A Chaplaincy Centre on campus for students of all faith or none;
- Muslim prayer facilities and multi-faith quiet areas;
- Jewish, Christian, Catholic, Muslim, Sikh and Hindu chaplains, plus faith advisers from many other faith communities;
- Student societies for most major religions at our Students' Union.

EQUALITY, DIVERSITY AND INCLUSION

You should enjoy a positive learning environment that is free from any discrimination, bullying, harassment or victimisation, where you'll be treated with respect and dignity irrespective of your age, disability, ethnicity, gender identity, marital status, nationality, religion or sexual orientation.



Watch a short film celebrating equality, diversity and inclusion at Manchester:
uom.link/webelongfilm

Plan your finances



Cost of living

22% lower cost of living
compared to London
(Numbeo)

COURSE FEES

Check the course profiles online
to find out the latest fees.

Find out more: uom.link/masters-pgp

FUNDING AND SCHOLARSHIPS

Visit our funding database for the
most up-to-date information on
scholarships and bursaries available.

Find out more: uom.link/pg-funding

ESTIMATED LIVING COSTS 2024 / 25

Accommodation (self-catered)	£7,800
Meals (excluding meals out)	£2,600
Clothes (including warm clothing and footwear)	£570
Local Transport (excludes travelling home/ visiting friends)	£600
Other (e.g. mobile phone bill, socialising, laundry, photocopying and printing)	£2,900
Total	£14,470

These costs are based on 52 weeks and intended as a guide only



Accommodation

The University of Manchester has more university-owned accommodation than virtually any other university in the country with more than 8,000 places available, none further than 3 miles from the University campus.

A number of residences are reserved exclusively for postgraduates; in others, undergraduate and postgraduate students are grouped together.

Our halls of residence are self-contained communities where you can make friends and feel at home. Some have their own common rooms, study areas and bars, and all offer social activities for you to enjoy. Whether you choose a modern or a more traditional hall, you'll benefit from excellent security and onsite support from the ResLife team.

Our ResLife advisers are on hand in every hall, providing the help you need to settle into your new community, and they will

continue to look out for your wellbeing throughout your time living with us.

If you are based outside the EU, we guarantee you a place in university-managed accommodation if you come to Manchester unaccompanied and apply by 31 August in the year of entry.

For the latest information on our accommodation offering, including costs, visit the Accommodation Office website.



Find out more: uom.link/pg-accommodation



Let's talk

CONTACT US

Tel: +44 (0) 161 543 4028
(available for calls from Monday to Friday 9.30am-1pm GMT)

Email:
MASALC@manchester.ac.uk

Find out more about studying a postgraduate degree in the School of Arts, Languages and Cultures:
<https://www.alc.manchester.ac.uk/study/masters/>

Recruitment and Admissions Office
School of Arts, Languages and Cultures
The University of Manchester
Oxford Road
Manchester, M13 9PL



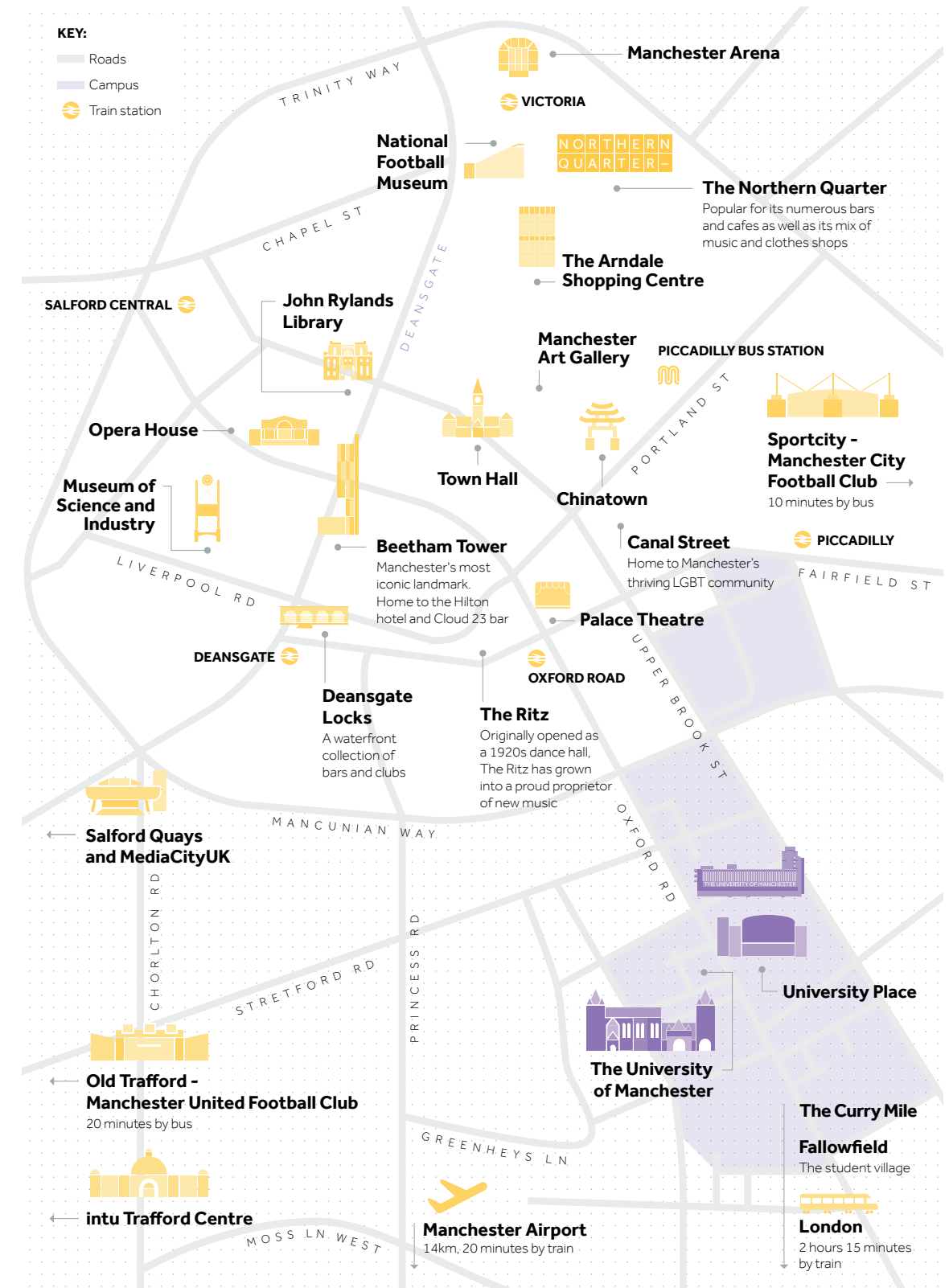
DISCLAIMER

This brochure was produced in July 2023 for the 2024 intake. It has therefore been produced in advance of course starting dates. For this reason, course information, including course content, may be amended prior to your applying for a place on a course of study. There are a number of reasons why changes to course information and/or published term dates may need to be made prior to your applying for

a place on a course. These may include but are not limited to: the need to make reasonable changes to the content and teaching offered in relation to any course for operational and/or academic reasons; the withdrawal of courses due to insufficient numbers; a course not receiving the required accreditation; and/or interruption or loss of key services due to circumstances beyond our

control, including fire, flood or other operational issues. Prospective students are therefore reminded that they are responsible for ensuring, prior to applying to study at The University of Manchester, that they review up-to date information by searching for the relevant course.

Click here:
www.manchester.ac.uk/study/masters/courses/



GET IN TOUCH

For up-to-date phone numbers and email addresses, including admissions contacts, please visit our website.

<https://www.alc.manchester.ac.uk/>

The University of Manchester
Oxford Road
Manchester
M13 9PL
United Kingdom

Telephone: +44 (0)161 306
1259 / +44 (0)161 275 0322

Email: MASALC@manchester.ac.uk

RC000797