

MANCHESTER
1824

The University of Manchester

Access and Student Success Impact Report

2021-22

> CONTEXT AND STRATEGY

> ACCESS: PRE 16

> ACCESS: POST 16

> SUPPORTING STUDENT SUCCESS

> RAISING ATTAINMENT THROUGH STRATEGIC PARTNERSHIPS



CONTEXT AND STRATEGY

ACCESS: PRE 16

ACCESS: POST 16

SUPPORTING STUDENT SUCCESS

RAISING ATTAINMENT THROUGH STRATEGIC PARTNERSHIPS

CONTEXT AND STRATEGY



800
schools participated in



2,115
Access and Student
Success activities
totalling over



4,584
contact hours¹



of our of schools and colleges reached
were 'high priority'², including the top
5 schools in Greater Manchester we
engaged with the most

¹ Excluding the Great Science Share for Schools (223,785).

² According to the Manchester Prioritisation Model, our inhouse targeting tool. Targetting is based upon percentage of students receiving free school meals and an institutions KS2 or KS4 performance.

The University of Manchester's Access and Student Success team, formerly the Widening Participation team, have a well-established reputation for widening access to higher education.

Now under our new name, we are continuing to promote equity of opportunity for all students, regardless of background, to access higher education and specifically Russell Group universities. However, it is clear is that we can do more to support the success of our students once they are at The University of Manchester.

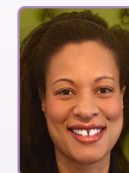
We are pleased to now be located alongside services with whom we are actively collaborating to develop targeted interventions to support the continuation, attainment, and progression of our underrepresented student groups at Manchester. The wider Access, Student Employability, Success & Development (ASESD) team, within the Division of Student and Academic Services, is our new home, and we look forward to forging new and fruitful working relationships with colleagues.

A new focus on the Student Success agenda is reflected in the direction set by the Office for Students (OfS). This new emphasis on the whole lifecycle approach to our work was reflected in the OfS' request for institutions to submit a variation to their existing Access and Participation Plans (APP). The APP runs for a 5-year cycle and sets out how higher education providers will improve equality of opportunity for underrepresented groups to access, succeed in and progress from higher education. In a variation to the final year of our current APP, we aim to address the following new priorities in 2023/24:

- working in partnership with schools and third sector organisations to raise pre 16 attainment,
- development of more diverse pathways into and through HE,
- ensuring access leads to participation on good quality courses with good graduate outcomes,
- a clear focus on the need to evaluate all of our access and success activity to provide evidence of impact.

This impact report represents a snapshot of some of the fantastic work that has taken place over the previous year, primarily in widening access but also featuring student success interventions that we will continue to nurture and develop. I want to thank colleagues across the institution for their continuing dedication to this vital area of work. I particularly want to express how proud I am to lead a team of such committed and passionate individuals and to extend my thanks to all of the Access and Student Success team for their hard work in the last year.

Sheree Palmer
Head of Access and Student Success



Student Success strategy

A new Student Success strategy at the University of Manchester is being developed in response to a clear process map, beginning with an audit of existing access and success activity, to evaluate impact effectively, embed best practice and address areas for improvement. Our Student Success Strategy will have direct links to strategic institutional objectives, including the Teaching Excellence Framework, working to deliver excellence in the student experience and excellent graduate outcomes. Our aim is that every student has the chance to reach their full potential. Success at the University of Manchester is about "getting on" not just getting in.

Data for our pre-University Access
and Student Success activities showed

79%

of the young people we worked with live
in high deprivation neighbourhoods (IMD)

55%

of the young people we
worked with live in areas
of low progression into
higher education (POLAR4)



ACCESS: PRE 16



Volunteers from the University of Manchester supporting St Mary's R.C. Primary School, Swinton

Over
317k

students took part in
GSSFS in 2022

4,341

students engaged from
25 schools
across Manchester

63%

of schools from
high socioeconomic
deprivation

Great Clean Air Challenge A SEERIH-Royal Society partnership programme for 5–11-year-olds

How does the air quality affect the world around us? was the big question that inspired primary pupils from across 25 Greater Manchester schools (63% from areas of high socioeconomic deprivation). 4,341 children were inspired by the story of 'Doffa's Reindeer' – a tale that tells of lichen depletion affecting natural ecosystems and food chains. The children used science enquiries to gather evidence to gauge the quality of their clean air around their school, collaborating with scientists from the University of Manchester, STEM Ambassadors, Greater Manchester Transport and volunteers. This culminated in children sharing their conclusions with new audiences as part of the Great Science Share for Schools, the award-winning campaign that invites 5–14-year-olds to share their own scientific questions and



All children now have a greater understanding of air pollution, where it comes from and how our Walk to School campaign fits in with this science. Shelley Kinman, Assistant Headteacher, St Mary's R.C. Primary School



investigations, to raise the profile of science in schools and communities and inspire young people into science and engineering. These schools are now taking Climate Action science to the next level. Eight children have successfully been awarded prestigious Royal Society Partnership Grants which will accelerate the opportunities children have to forward their enquiries and collaboration with scientists in our city.

Find out more about SEERIH

Find out more about GSSFS

Gateways

The Gateways programme targets talented local pupils from backgrounds currently underrepresented in higher education. The programme invites students to visit our campus every year from Year 7–11, to explore university life and the range of degree courses on offer. 48 schools from Greater Manchester are enrolled on the programme, and over 1000 pupils attend sessions annually.

Due to Covid restrictions, Gateways used a blended delivery model in 2021/22. This model provided all schools with access to virtual sessions for each year group, featuring presentations, workshops, and activities. We also created a bespoke Gateways website for pupils, parents/carers, and teachers, which has had over 680 users since launching.

In 2022/23, we have returned to delivering the Gateways programme on-campus but encompassing key advances that the pandemic created; including the use of student ambassador videos to represent the diversity of our student body and the use of the Gateways website to encourage learning outside of our events.



Gateways have done a great job at putting the sessions online. Partner School Teacher



Find out more about Gateways

94%

of schools supported
were highest priority WP
schools from Greater
Manchester

1,337

learners were
supported over
54 activities



Access All Areas

Access All Areas is a group of student-led volunteering projects and in total AAA supported 740 children in 2021/22, with students volunteering over 450 hours.

Manchester Outreach Dentists and Manchester Outreach Medics invited local pupils from high priority sixth forms and colleges to mock multi mini interview days, with 100% of survey respondents feeling more confident about future interviews after attending.

New projects also began, with Audio sparking interest in pursuing music, and Manchester Independent Students' Programme building a community of care experienced and estranged students at UoM.

Find out more about Access All Areas

Follow us on Instagram

Dentists in
Primary Schools
introduced Dentistry to

270
children

94%

of MOMs attendees
increased their
understanding of the
medicine application
process

Manchester
Outreach Medics
supported

252
Medicine
Applicants



ACCESS: POST 16

Manchester Access Programme

The Manchester Access Programme (MAP) is our flagship widening access scheme for local students from underrepresented backgrounds to prepare for university study through a variety of workshops and engaging activities. This year MAP was delivered in a hybrid model, with a mix of on-campus activity and online modules and webinars. Adopting hybrid delivery due to covid has afforded MAP greater flexibility for students and we are pleased to continue using this model in 2023.

* Progression to higher education or training, Academic Year 2020/21 – Explore education statistics – GOV.UK (explore-education-statistics.service.gov.uk).

Average MAP figure taken from 3 year HESA average of tracked students entering HE within 2 years.

“ I really enjoyed taking part in MAP. Not only did I gain many academic skills, but I also felt like I was really preparing for life during higher education. Using Blackboard and all the resources provided by The University of Manchester, I was able to confidently plan and write my academic assignment as well as learn lots about higher education. I learned how to reference, and I actually used these skills at college after completing MAP, which made me realise how valuable this experience was! **MAP Student** ”

452

Year 12 students completed the Manchester Access Programme in 21/22

123

Academic Staff/PhD students tutored MAP students through their academic assignment

83%

of MAP students progress to university, compared to **66% of students nationally***



Manchester Distance Access Scheme (MDAS)

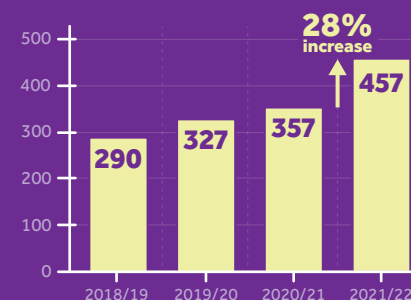
The Manchester Distance Access Scheme is The University of Manchester's national widening access programme. 457 students enrolled on to MDAS in 2022, which is a 28% increase on last year's sign-up (357). 290 students completed MDAS in 2022, with 212 students progressing to The University of Manchester for the current academic year.

MDAS returned to its original structure and length this year, after the programme had been condensed last year to fit around the change to UCAS timelines and A Level results day. This meant that students could benefit from full delivery of the Mini Degree Module, which takes around 20 hours for students to complete, in addition to the 5 hours for the Academic Skills Module.

“ I have encountered problems on my course that I was able to solve using knowledge from the MDAS Mini Degree Module, this was very helpful. **MDAS 2022 student** ”

“ I really enjoyed the Mini Module Degree because I actually found it useful to apply to my current university work, it really put me at an advantage compared to people who haven't done anything like this. **MDAS 2022 student** ”

Number of students enrolled on MDAS



Find out more about MAP



MAP students attending a University Life Conference

Find out more about MDAS



SUPPORTING STUDENT SUCCESS

Manchester 10/10

We have developed our Manchester 10/10 programme, designed to offer support to our Black students through a bespoke and targeted suite of activities and opportunities. Of the 2021/22 participants 91% reported that they felt a stronger sense of belonging at the University. Two Manchester 10/10 students won the prestigious Freshfields Stephen Lawrence Scholarship giving them access to bespoke support, mentoring and a £5000 bursary from a Magic Circle, top 5 law firm or high-profile commercial firms such as Goldman Sachs.

91%
of participants reported that they felt a stronger sense of belonging at the university

2
Manchester 10/10 students were awarded a Freshfields Stephen Lawrence Scholarship

“ I never would have thought I would have been given the opportunity to spend 3 days in a Magic Circle law firm in my first year. Thank you for all the support that [Manchester 10/10 has] given me.
Manchester 10/10 Student

”

Find out more about Manchester 10/10 

Careers Service support

Adapting post Covid

2022 saw the Careers Service named Highflyers Most Targeted University and 2nd in the Best Careers Service category on Student Crowd. Emerging from the Covid-19 crisis the Careers Service provided appointments and events online (and as restrictions lifted, on campus) to allow those who had graduated or were off campus to engage with us in the most flexible manner.

Continually adapting to student and graduate needs

We continue to deliver and evaluate a targeted careers support package consisting of work experience bursaries, Student Experience Internships, and targeted schemes for students from low-income backgrounds, BAME and disabled students.

In 2021/22 our partnership with social mobility charity, UpReach supported 111 students

8
of the students supported were either care experienced or estranged

76%
were from a low-income background

63%
of students secured a graduate role, work placement, internship or entered further study



Our schemes

Global graduates

28 students who receive The Manchester Bursary were sponsored to take part in the Global Graduates Programme.

Student Experience Internships

Summer 2022: 23 students in receipt of a bursary were placed.

Work experience bursary

21/22: 29 bursaries were allocated to students in receipt of means tested support.

Visit the Careers website 

High Fliers: The Graduate Market in 2022 

Student crowd: Best Universities for Careers Service 2022 

Manchester Master's Bursary (MMB)

We want to ensure our postgraduate student population is representative of the communities we serve and reflects the diversity of the population. The MMB, which has been available since 2017, is a bursary funded by our alumni community to support the progression of underrepresented groups into and during postgraduate study.

75 postgraduate students all meeting specific widening participation criteria were awarded the MMB in 2021/22; a £4000 cash bursary to support during their studies and to make best use of their time as a postgraduate student at Manchester. We have recently allocated MMB bursaries to 75 recipients starting postgraduate study in September 2022 too.

“ Without the Bursary, I don't think I would have been able to afford the course at all. Money is still a major issue and something that does cause me a lot of stress daily, but the bursary has majorly helped. It would be great if it could be offered to more people, as those from a working class/widening participation background and so much more unlikely to be able to undertake or succeed highly in a master's.
MMB recipient

Without the MMB I don't know how I would have paid for petrol to get me into Manchester for my lectures etc.
MMB recipient

”

Find out more about MMB 



RAISING ATTAINMENT THROUGH STRATEGIC PARTNERSHIPS

The University of Manchester has committed to improving equity of opportunity for young people across Greater Manchester through the Great Manchester higher education ecosystem, in collaboration with partners in the 3rd and public sector.

The Brilliant Club

The Brilliant Club has several programmes aimed at addressing the most common and prevalent barriers to university access and success:

- Parent Power,
- Join the Dots,
- The Scholars Programme,
- Make Your Mark.

The Scholars Programme aims to improve pupils' confidence in key areas for HE readiness. This work is targeted at students who are eligible for pupil premium, with no parental experience of HE and from the most deprived areas (IDACI).

25
PhD tutors delivered the Brilliant Tutoring Programme to 294 students



The Brilliant Club's four core programmes and their intended outcomes

In partnership with The Brilliant Club, The University of Manchester has supported 288 pupils to make academic progress of 5% or more through small group tutorials taught by PhD tutors from the university.

The Brilliant Club: Programmes Evaluation [\[Link\]](#)

Greater Manchester Higher

Greater Manchester Higher is a collaborative network of universities and colleges working towards widening access to HE. The partnership is part of the national Uni Connect programme.

In 2021/22, the University of Manchester delivered 57 events as part of Greater Manchester Higher, including three bespoke campus visits for care experienced young people, one residential summer school, and 31 virtual subject spotlight workshops presented by university PhD students. We were once again proud to co-lead with Manchester Metropolitan University Success4Life in 2022—an 8-week intensive project that develops the skills and confidence of a small cohort of looked after children from all over Greater Manchester.

Supporting the Supporters:
88%
told us they agreed/strongly agreed that they feel more confident discussing student finance with the young person they support

1,120
individual young people engaged

54
schools/colleges worked with

“My experience has been filled with valuable information that will assist me in making decisions about my future.”
Wise Up Summer School Student

Visit the GM Higher website [\[Link\]](#)

IntoUniversity



Academic Support students taking part in an activity at the Manchester North centre launch

In 2022, **IntoUniversity** Manchester North moved from their original site in Blackley to Harpurhey, where they have continued to strengthen their established school partnerships and embed into the local community.

IntoUniversity's programmes aim to raise attainment through the development of metacognition, oracy and support from multiple forms of intervention. External evaluation using the National Pupil Database found that students with a high dosage of Academic Support made the equivalent of 3 months' additional progress in Maths.

144
students attended Academic Support

1,182
students took part in FOCUS workshops with IntoUniversity Manchester North

Students who attend a high dosage of Academic Support made the equivalent of **3 months'** additional progress in Maths

Visit the IntoUniversity website [\[Link\]](#)

IntoUniversity: Impact Report 2022 [\[Link\]](#)

