



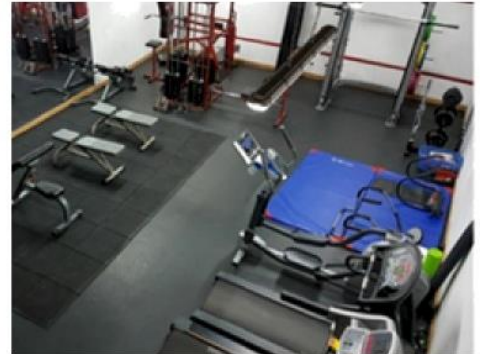
HULME HALL TRUST



HULME HALL AND BURKHARDT HOUSE TRUST FUND BURSARIES

**ALL STUDENTS WHO COMPLETE MAP ARE ELIGIBLE TO APPLY FOR A
FULLY FUNDED PLACE IN HULME HALL OR BURKHARDT HOUSE**

ABOUT HULME HALL AND BURKHARDT HOUSE



Hulme Hall and Burkhardt House have an active community led by the Hall Exec and the ResLife pastoral teams. A wide variety of events take place during the year including film nights, Karaoke, quizzes, formal dinners, live music and sports events. The hall also has an on-site gym, music practice spaces, bar, squash courts and study rooms.

Hulme Hall is one of the oldest halls of residence at The University of Manchester, celebrating its 150th anniversary in 2020. The hall has recently undergone renovation across student bedrooms and communal areas.

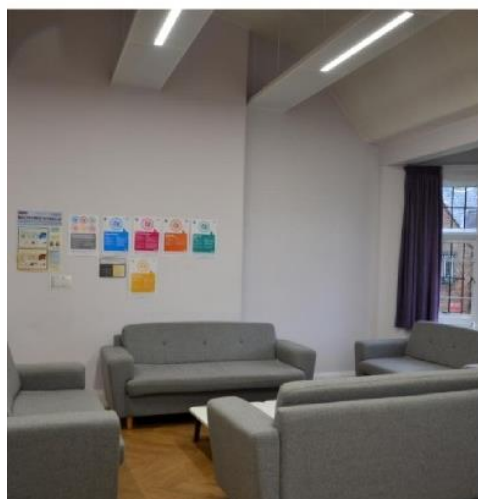
The Hulme Hall Trust fund offers accommodation bursaries to Manchester Access Programme students who choose to live at Hulme Hall and Burkhardt House in their first year. The bursary covers 100% of rent costs for either catered accommodation in Hulme Hall or ensuite self-catered accommodation in Burkhardt House.

YOUR ROOM AT HULME HALL AND BURKHARDT HOUSE

There are seven blocks within the Hulme Hall and Burkhardt House site.

In Birley, Christie, Greenwood, Houldsworth, Oaklands and Plymouth blocks student rooms are on corridors with communal kitchens, bathrooms and common rooms. Students living in these blocks are catered and eat breakfast and their evening meal in the dining hall – the cost of this is included within the Hulme Hall Trust bursaries.

In Burkhardt, student rooms are in self-catered flats of around eight people who share a kitchen. All rooms in Burkhardt have an ensuite bathroom.



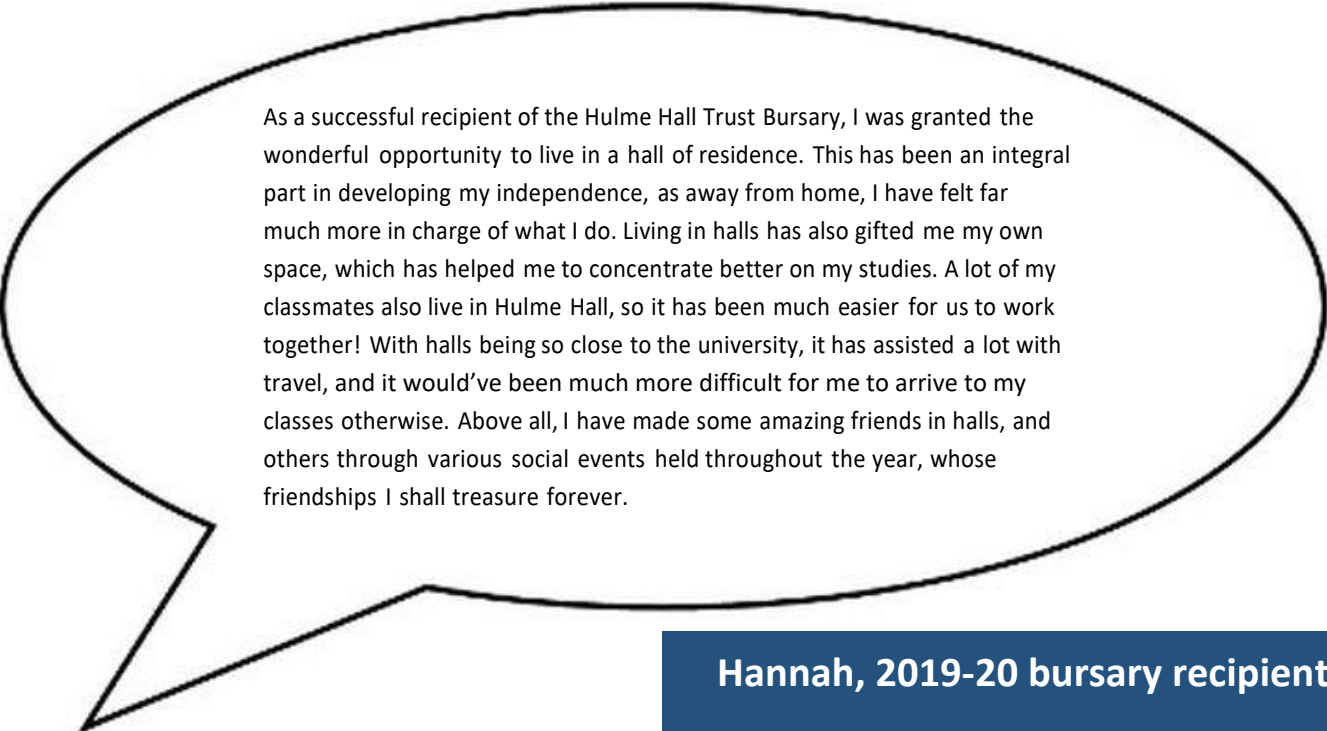
FULL BURSARIES FOR MAP STUDENTS

The Hulme Hall Trust Fund offers full accommodation bursaries to Manchester Access Programme students who choose to live at Hulme Hall and Burkhardt House for their first year at The University of Manchester. The bursary covers 100% of the cost of rent for an academic year, plus catering in Hulme Hall, giving students the opportunity to experience the full range of social, academic and sporting benefits of living in university accommodation.

Interested students should complete the application form, which will be emailed out to eligible students.

Applicants are advised to fill the survey as fully as possible, as applications are reviewed based on both financial need and the quality of the application.

Applications are reviewed by a panel of Trustees and Hulme Hall staff in June and July. If successful in the shortlisting process, applicants will be notified by the MAP team at the end of August that they will receive the bursary.



As a successful recipient of the Hulme Hall Trust Bursary, I was granted the wonderful opportunity to live in a hall of residence. This has been an integral part in developing my independence, as away from home, I have felt far much more in charge of what I do. Living in halls has also gifted me my own space, which has helped me to concentrate better on my studies. A lot of my classmates also live in Hulme Hall, so it has been much easier for us to work together! With halls being so close to the university, it has assisted a lot with travel, and it would've been much more difficult for me to arrive to my classes otherwise. Above all, I have made some amazing friends in halls, and others through various social events held throughout the year, whose friendships I shall treasure forever.

Hannah, 2019-20 bursary recipient

PARTIAL BURSARIES FOR RETURNING STUDENTS

Partial bursaries are available to students who apply to return to the hall for a second or third year. The bursary amount is deducted from your accommodation rent payments, to encourage and support residents who wish to return to hall and contribute to the Hulme and Burkhardt community.

Residents should complete the application form which will be circulated by the halls team in Semester 2. Students must have submitted their application to the Accommodation Office requesting to return to Hulme Hall and Burkhardt House before the deadline. Applications will be reviewed based on the quality of the application, evidence of the student's contribution to hall life and financial need; it is important that applicants complete the form as fully as possible and make the most of the word limit.

Applications for the bursary are reviewed by a panel of Trustees and Hulme Hall staff in April. Successful applicants will be notified in May, and the bursary award will be added to their accommodation account upon their return to hall in September. Bursary recipients will be asked to submit a report detailing how the bursary has helped them.



TRAVEL AWARDS FOR SUMMER ACTIVITIES

The award supported my trip of a lifetime, volunteering and sailing on board the Morning Star Tall Ship. I enjoyed so many wonderful and rewarding experiences, leading and working with young people.

**Sam, 2017-18
award recipient**

The travel award supported my trip to Sri Lanka in September 2018 to complete some voluntary work in a hospital. I learnt so much during my time there, and looking to the future, this experience has definitely opened my eyes to a global perspective on nursing.

**India, 2017-18
award recipient**

Each year the Hulme Hall Trust fund offers all residents the opportunity to apply for a travel award – a sum of £50 - £400 for vacation travel in relation to their academic work and educational development or to help support professional development or undertaking voluntary work. The travel can take place in the UK or overseas.

Residents should complete the application form which will be circulated by the halls team in Semester 2. Applications will be reviewed based on the quality of the application and financial need; it is important that applicants complete the form as fully as possible and provide comprehensive details of their travel plans and projected costs.

Applications for the bursary are reviewed by a panel of Trustees and Hulme Hall staff in May. It is a requirement that following the travel activity, successful applicants submit a short report about the highlights and learning points of their experience, including photos where appropriate.

END OF YEAR STUDENT AWARDS

At the end of the academic year, students are nominated by the JCR committee and Hulme Hall staff for a series of awards, also funded by the Hulme Hall Trust. These awards are presented at a formal dinner as part of end of year celebrations.

Hulme Hall Student Awards include:

Contribution to the Social Life of the Hall

Hulme Hall Arts Prize

Hulme Hall Prize (for outstanding contribution)

Life Membership of the Hall

Sportsman and Sportswoman of the Year

