

# PIFCO®



## INSTRUCTION MANUAL

---

### Oil Filled Radiator

Model number: PH0129-9T

## Components



# PIFCO<sup>®</sup>

## How can we help?

The PIFCO team is always interested in what you have to say, so why not get in touch?



**Call us**  
01909 544 570



**Email us**  
info@pifco.com



**Write to us**  
PIFCO Team, Sabichi Homewares Ltd,  
Priorswell Road, Worksop, SB0 2BY



**Website**  
www.pifco.com

# PIFCO<sup>®</sup>

## Safety instructions

When using an electrical appliance, basic safety precautions should always be followed, including the following:

- This appliance is not intended for use by people (including children) with reduced physical, sensory or mental capabilities, or lack of experience and knowledge, unless they are supervised or given instruction concerning the use of the appliance by a person responsible for their safety.
- Children should be supervised to ensure that they do not play with the appliance.
- Extreme caution is necessary when any heater is used by or near children or elderly people. Never leave the heater unattended while it is being used.
- Connect the appliance to a single phase AC supply equal to the voltage specified on the rating plate.
- In order to avoid overheating, do not cover the heater.
- Never leave the heater unattended while it is in use. Always turn the product to the "OFF" position and unplug it from the electrical outlet when not in use.
- The heater must not be located immediately below an electrical socket-outlet.
- Do not run the cord under carpeting or cover it with rugs, runners or the like. Arrange the cord away from traffic areas and where it will not be tripped over.
- Do not operate the heater with a damaged cord or plug, after the heater has malfunctioned or has been dropped or damaged.
- If the supply cord is damaged, it must be replaced by a qualified person to avoid a hazard.
- Avoid the use of an extension cord as this may cause the heater to overheat and cause a risk of fire.
- Use the heater in a well-ventilated area. Do not insert or allow objects to enter air intake or outlet openings.
- To prevent a possible fire, do not block air intake or outlet openings in any manner.
- Do not use on soft surfaces, such as a bed, where openings may become blocked. Use the heater on a flat, dry surface only.
- Do not place this heater near flammable materials, surfaces or substances, as there may be a risk of fire. Keep materials, surfaces or substances at least 1 metre from the front of the heater and keep them away from the sides and rear.
- Do not use the heater in any areas where petrol, paint or other flammable liquids are stored, e.g. garages or workshops as there are hot, arcing and sparking parts inside the heater.
- Do not use this heater near or in the immediate vicinity of a bath, shower or swimming pool. Never position the heater where it may fall into a bathtub or any other vessel containing water or liquid.
- This heater is hot when in use. To avoid burns and personal injury, do not let bare skin touch hot surfaces. Use handles when moving the product.
- Be sure that no other appliances are in use on the same electrical circuit as this heater, as an overload can occur.
- Regulations concerning the disposal of oil when scrapping the appliance have to be followed.
- The heater should not be used in a room in where the floor area is less than 5 square metres.
- The cord should not be placed near the hot surface of appliance.
- This heater is designed for indoor household use.
- Do not cover the heater as this may lead to a fire risk.

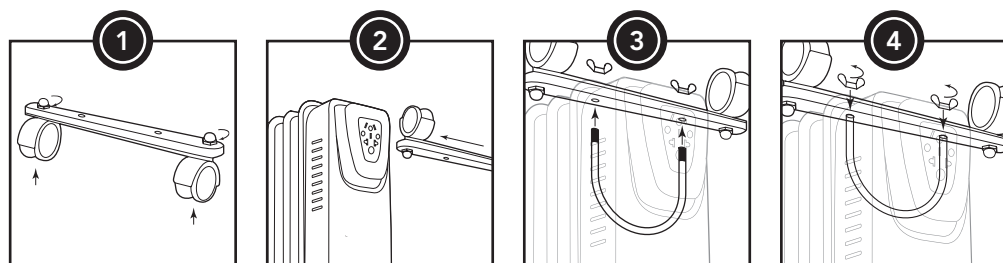
## What's in the box

- Radiator
- 4 x castors
- 2 x support bars
- Instruction manual

## Assembly instructions

The heater is packaged with the feet unattached. The feet must be attached before operating the heater.

**WARNING:** Do not operate without feet attached. Operate the heater in an upright position only (feet on the bottom, controls on the top). Any other position could create a hazardous situation.



- 1 Fit the Castors to the support bars using the dome nuts to create the foot.
- 2 Turn the radiator upside-down on a scratch-free and stable surface to prevent damage to the paint finish or the floor.
- 3 Fit the two feet to the radiator by placing the U bolts between the outermost fins on each side of the radiator.
- 4 Securely fasten the two feet to the radiator by screwing the two wing nuts to each U bolt. Do not over tighten, as this may cause damage to the radiator.

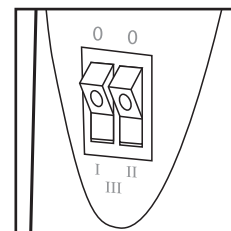
Once turned to the upright position, allow the oil to settle and wait for at least half an hour before using.

**PIFCO®**

## Instructions for use

**NOTE:** It is normal for the heater to emit some smell and fumes when it is turned on for the first time or has been turned on after a long period of non-use. This will disappear after the heater has been on for a short while.

- 1 Before using the radiator make sure that it is on a flat and stable surface.
- 2 Set all the radiator controls to "OFF" and the thermostat to the minimal position. Insert the plug to the power supply.
- 3 Set the power switch to the "ON" position.
- 4 Turn the thermostat control clockwise all the way round, until you hear a click. This sound indicates that the oil heater is activated and the indicator is ON. Continue turning the thermostat control clockwise to its highest setting.
- 5 When the indicator light turns ON the heater will activate. The indicator light turns ON and OFF repeatedly during use. This is normal and shows that the thermostat is keeping the radiator at your desired temperature.



**Switch I = Low Heat**

**Switch II = Medium Heat**

**Both Switches III = High Heat**

**PIFCO®**

## Timer

This model is also fitted with a 24hr timer which has been split into 96 segments around its dial, each segment is the equivalent to 15 minutes of time.

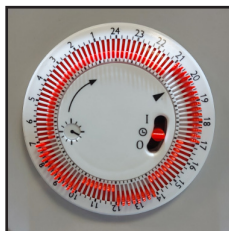
### TIMER OPERATION

The heater has 3 operational modes.

- 🕒 Timer mode - in this central position the timer will switch the heater on and off at times set by the user (see setting the timer below).
- I Continuous mode - this allows the heater to be turned on continuously bypassing the timer.
- O Off - in the position the timer continues to run but no power will be fed to the heater.

### SETTING THE TIMER

- 1 Set the heater to Timer mode (clock symbol).
- 2 Rotate the outer ring of the timer in a clockwise direction until the current time is lined up with the arrow, i.e. if the timer being set is 8pm, rotate the outer ring until the number 20 is in line with the arrow.
- 3 To set the timer schedule, pull the segments outwards toward the outer ring for ON and pull inwards for OFF.
- 4 When setting, the heater will operate each day during the times programmed.



**NOTE:** The heater must always be plugged into a power socket, the element switches must be in the ON position and the thermostat must be suitably set to ensure the heater will come on.

**NOTE:** When using timer mode, due consideration should be given to the fact that the heater may come on whilst unattended.

## Cleaning and maintenance

- Before cleaning always switch off the radiator and remove the plug from the electrical socket.
- Ensure that the unit is cool enough to work on.
- To remove the dust, wipe the appliance with a dry cloth.
- Never use abrasive powders or solvents.
- If the heater shows any signs of wear or damage disconnect immediately from the mains supply, DO NOT use it - have it checked by a suitably qualified person.

### WARNING:

Do not immerse any electrical part of the appliance in water such as motor units or plugs. Please see cleaning section for further instructions.

## Spares

Accessories and spare parts for your product can be found at [www.pifco.com](http://www.pifco.com)

## Model: PH0129-9T

Item	Symbol	Value	Unit	Item	Unit
Heat output				Type of heat input for electric storage, local space heaters only (select one)	
Nominal heat output	P <sub>nom</sub>	2.0	kW	Manual heat charge with integrated thermostat	No
Minimum heat output (indicative)	P <sub>min</sub>	0.8	kW	Manual heat charge control with room and/or outdoor temperature feedback	No
Maximum continuous heat output	P <sub>max, c</sub>	2.0	kW	Electronic heat charge control with room and/or outdoor temperature feedback	No
Auxiliary electricity consumption				Fan assisted heat output	No
At nominal heat output	e <sub>lmax</sub>	N/A	kW	Type of heat output/room temperature control (select one)	
At minimum heat output	e <sub>lmin</sub>	N/A	kW	Single stage heat output and no room temperature control	No
In standby mode	e <sub>lSB</sub>	0	kW	Two or more manual stages, no room temperature control	No
				With mechanic thermostat room temperature control	Yes
				With electronic room temperature control	No
				Electronic room temperature control plus day timer	No
				Electronic room temperature control plus week timer	No
				Other control options (multiple selections possible)	
				Room temperature control with presence detection	No
				Room temperature control with open window detection	No
				With distance control option	No
				With adaptive start control	No
				With working time limitation	Yes
				With black bulb sensor	No

Contact details: PIFCO, 5 Wadsworth Rd, Perivale, Middlesex, UB6 7JD

**PIFCO®**

## Technical details

**Model:** PH0129-9T

**Dimensions:** H54.5cm x W24cm x D41.5cm

**Power:** 800W / 1200W / 2000W

**Weight:** 7.35 KG

**Country of origin:** China

**UK CA CE** Sabichi Homewares Ltd  
5 Wadsworth Road, Perivale  
Middlesex, UB6 7JD



### WASTE ELECTRICAL RECYCLING:

This symbol indicates the product is classed as Electrical or Electronic Equipment and should not be disposed of with other household waste.

The Waste Electrical and Electronic (WEEE) Directive has been introduced across the EU:

- To recycle waste electrical products using the best available recovery and recycling techniques.
- To minimise the impact to on the environment
  - To treat any hazardous substances
  - To avoid increasing landfill

WEEE product should be disposed of by handing it over at a designated collection point. For more information about where to drop off your waste product for recycling please contact you local authority.

**PIFCO®**

# Warranty

This product is guaranteed for 1 year from the date of original purchase.  
If the product fails within this period due to faulty materials or workmanship,  
it will be repaired, replaced or refunded at our discretion.

Proof of purchase will be required.

## **This warranty applies only to:**

- Product installed and used in accordance with the instructions contained in this manual.
- Product used for domestic purposes only.
- Product purchased in the UK and Ireland.

## **This warranty does not cover:**

- Cosmetic damage.
- Normal wear and tear or consumable parts.
- Incorrect voltage supply or power surges.
- Customer misuse, modifications or adjustments.
- Products with unreadable or removed serial numbers.

PIFCO disclaims any liability for incidental or consequential loss or damages.  
In the event of a problem please contact our customer support team for assistance.

## **When contacting PIFCO please provide:**

- Product model number. Model can be found on the product rating label.
- Date of purchase.
- Complete description of the problem.

This information will help our team assist you more quickly.

Help Line: 01909 544 570

Opening Hours: Monday - Friday, 9am – 5pm

Email: [info@pifco.com](mailto:info@pifco.com)

**PIFCO<sup>®</sup>**

**[www.pifco.com](http://www.pifco.com)**