

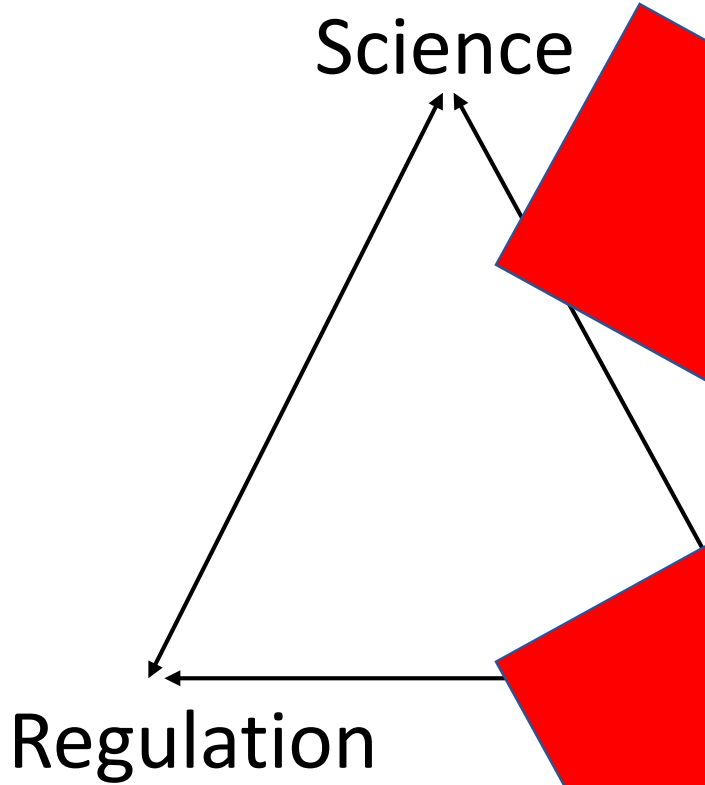
# HSE: How Science Supported Policy and Regulation During the Pandemic



John Rowe  
Acting Head of  
Operational  
Strategy, HSE

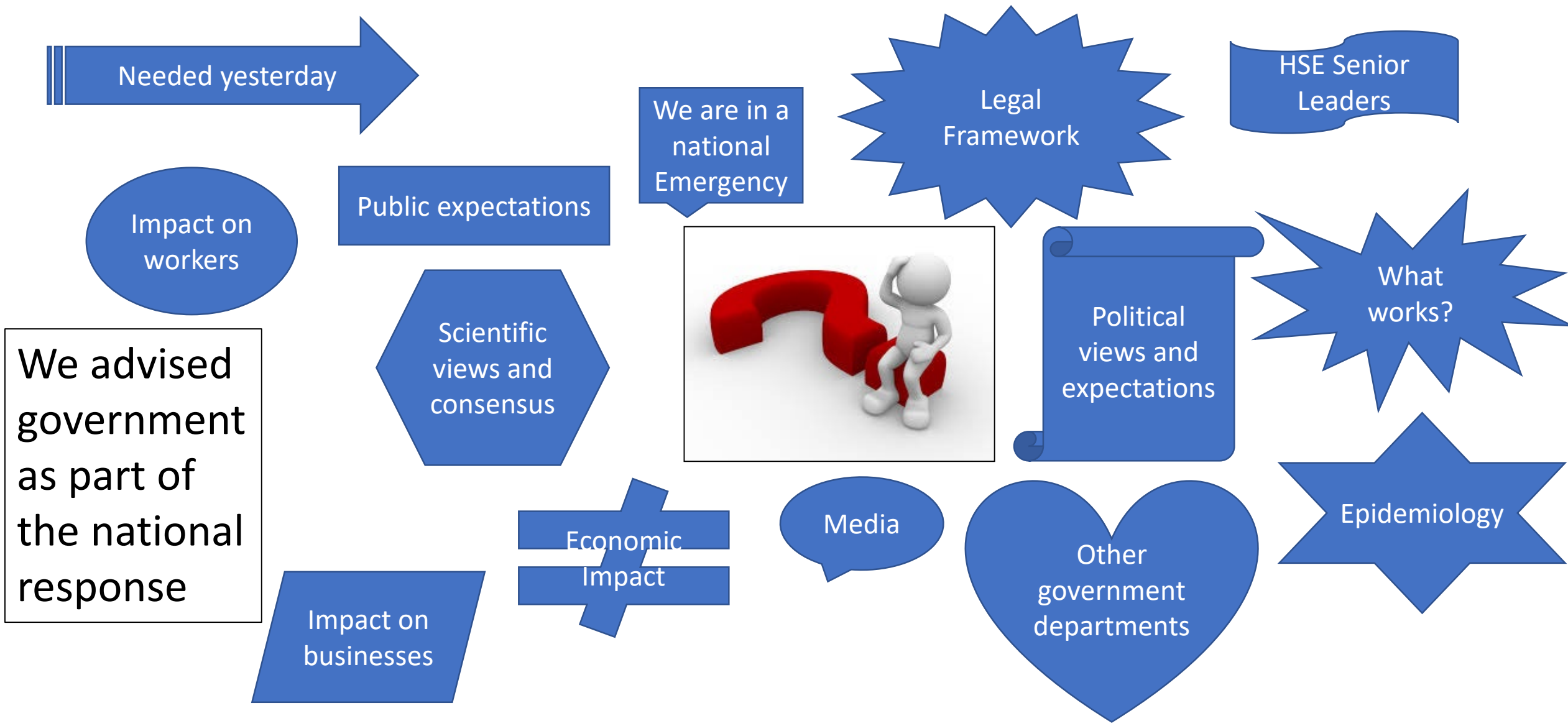


# What Influences HSE Policy Decisions



Established Methodology  
We are an Independent Regulator

# What Influenced HSE Policy & Regulatory Decisions



# What were the BIG questions

How transmitted in workplace?

**Risk**

What activities can continue?

Tolerability?

What can businesses do?  
*The hierarchy..*

As knowledge increased how do we get changed guidance out?

What is the workplace impact of testing and vaccination?

**Control**

What role does ventilation play and what does good look like?

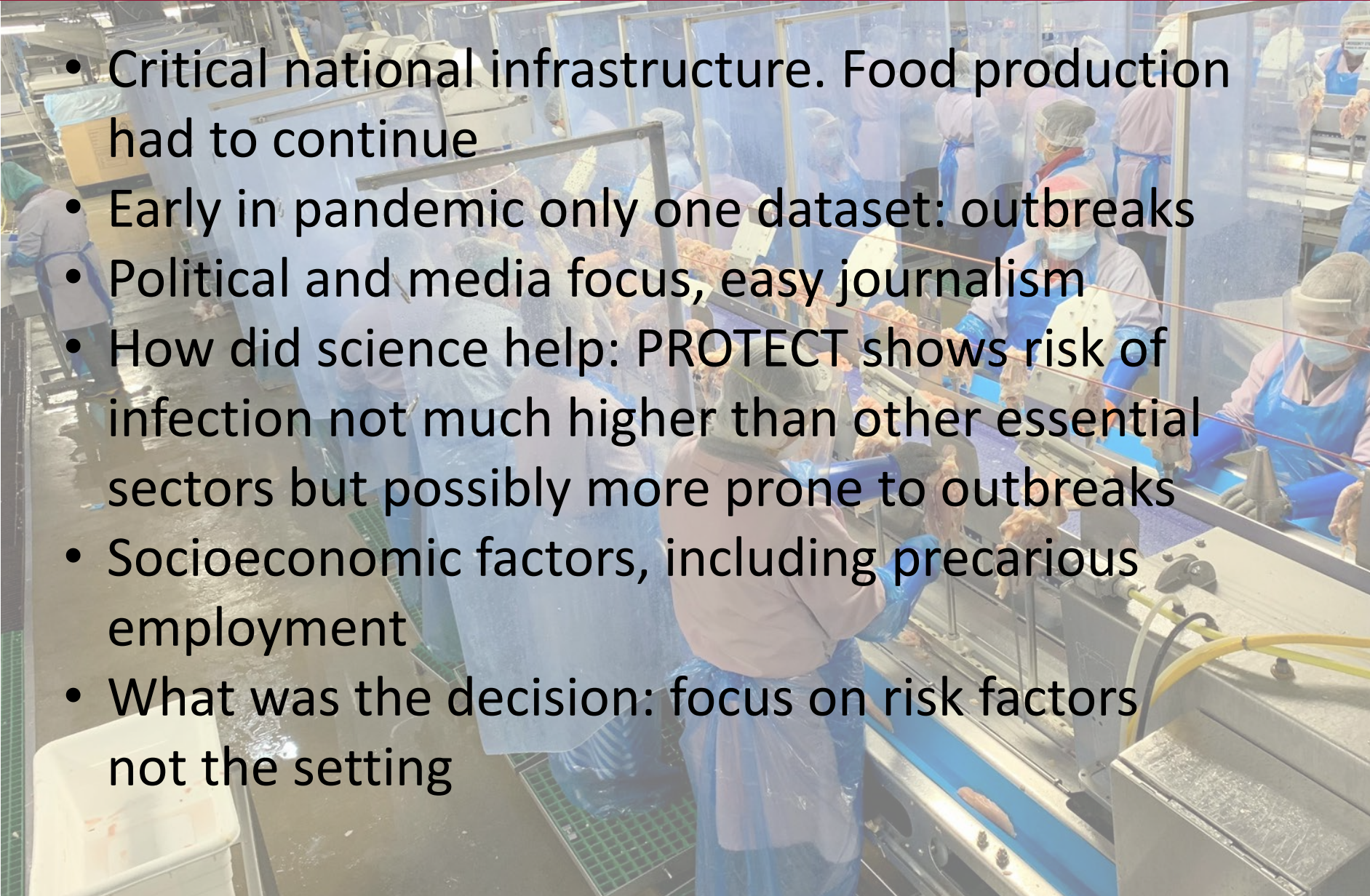
Is this PPE effective and safe?

Are workplaces doing enough?  
Role of regulators?



# Food Manufacture

- Critical national infrastructure. Food production had to continue
- Early in pandemic only one dataset: outbreaks
- Political and media focus, easy journalism
- How did science help: PROTECT shows risk of infection not much higher than other essential sectors but possibly more prone to outbreaks
- Socioeconomic factors, including precarious employment
- What was the decision: focus on risk factors not the setting





# Human Disinfection Systems

- Novel technology marketed to reduce risk by killing the virus on outer most surface
- High profile businesses purchased and used
- Promoted widely as a way to open up to the public
- How did science help: WHO and SAGE quickly concluded lack of evidence about efficacy
- What was the decision: firm position spraying not recommended under any circumstances



**Andrew Lloyd Webber calls for 'game-changing' chemical to be pumped into theatres, schools and restaurants to open up Britain again amid Covid-19 pandemic**



# Challenges

- How to make decisions based on insufficient knowledge
- Speed of scientific response necessary to influence policy
- What is 'enough' scientific consensus?
- A spectrum of views became polarised opinions
- Complexity of issue vs ability to influence
- What will we do differently?
- Hindsight