

National Confidential Inquiry into Suicide and Safety in Mental Health (NCISH)

27%
people

who died by **suicide** had contact with **mental health services** in the **12 months** before death

Our findings suggest...

Mental health care



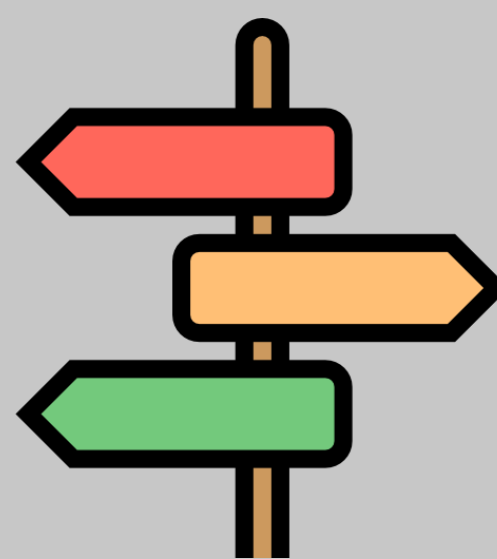
Your care should include asking about **anniversaries** and **dates** that are important to you

Young people



You might feel like you have a lot of problems. You should be encouraged to **use services** that will help you

Money, work or housing problems



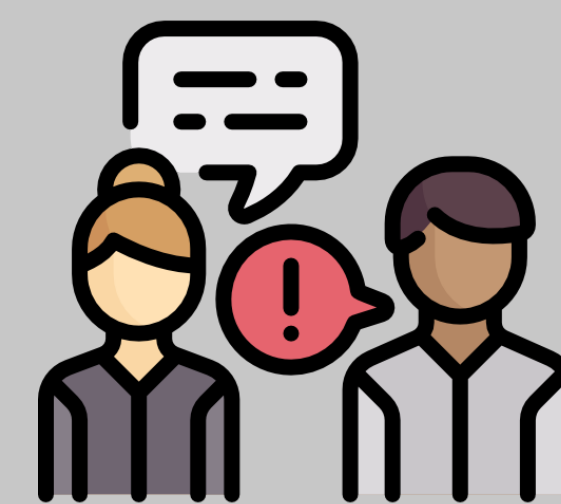
You should be **informed** about organisations that can **help** you with your problems (e.g. debt)

Physical illness



You might be asked about your **physical health** and what **medications** you have at home

Domestic violence



Talking about any violence or risk of violence against you is an **important part** of your **care**