

# ACQUISITIONS TEAM

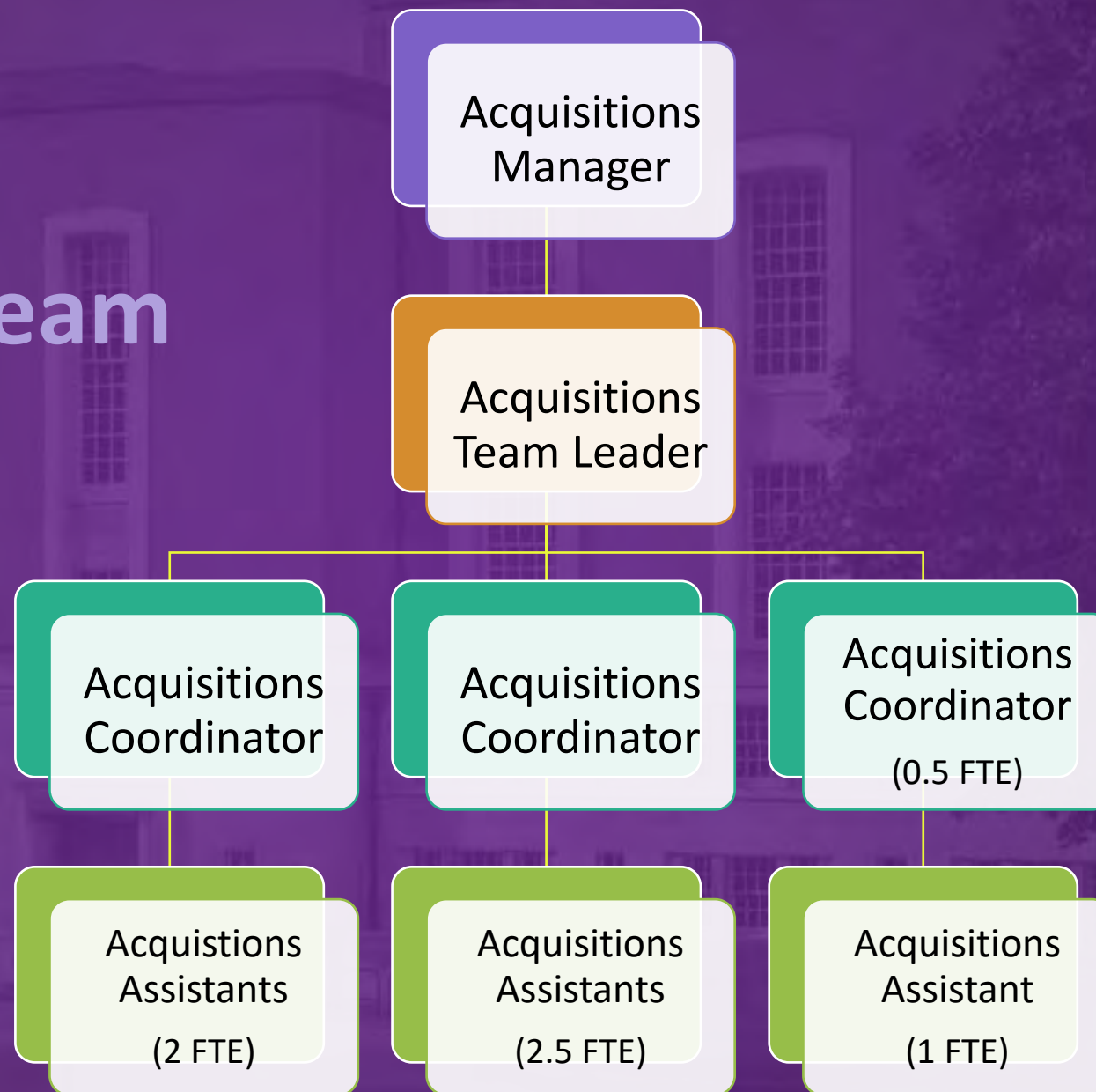
**Collection Strategies  
Directorate (CSD)**

## Meet our team

- Who we are
- What we do including Order a Book/Order an Article
- Team highlights from the past year
- Our priorities for 2022
- How to contact us



# Acquisitions Team Structure



# Meet the ACQUISITIONS Team



# What do we do?

We acquire academic content, either through purchase or loan, to support the Teaching, Learning & Research needs of the University

## Our customers include:

- Students including Distance Learners
- Academics
- Researchers
- John Rylands Research Institute and Library
- Other University Libraries
- Library staff





# How do we order material?

Mainly via 2 schemes:

- **Order a Book**
- **Order an Article**

Emailed **requests** for Special Collections material



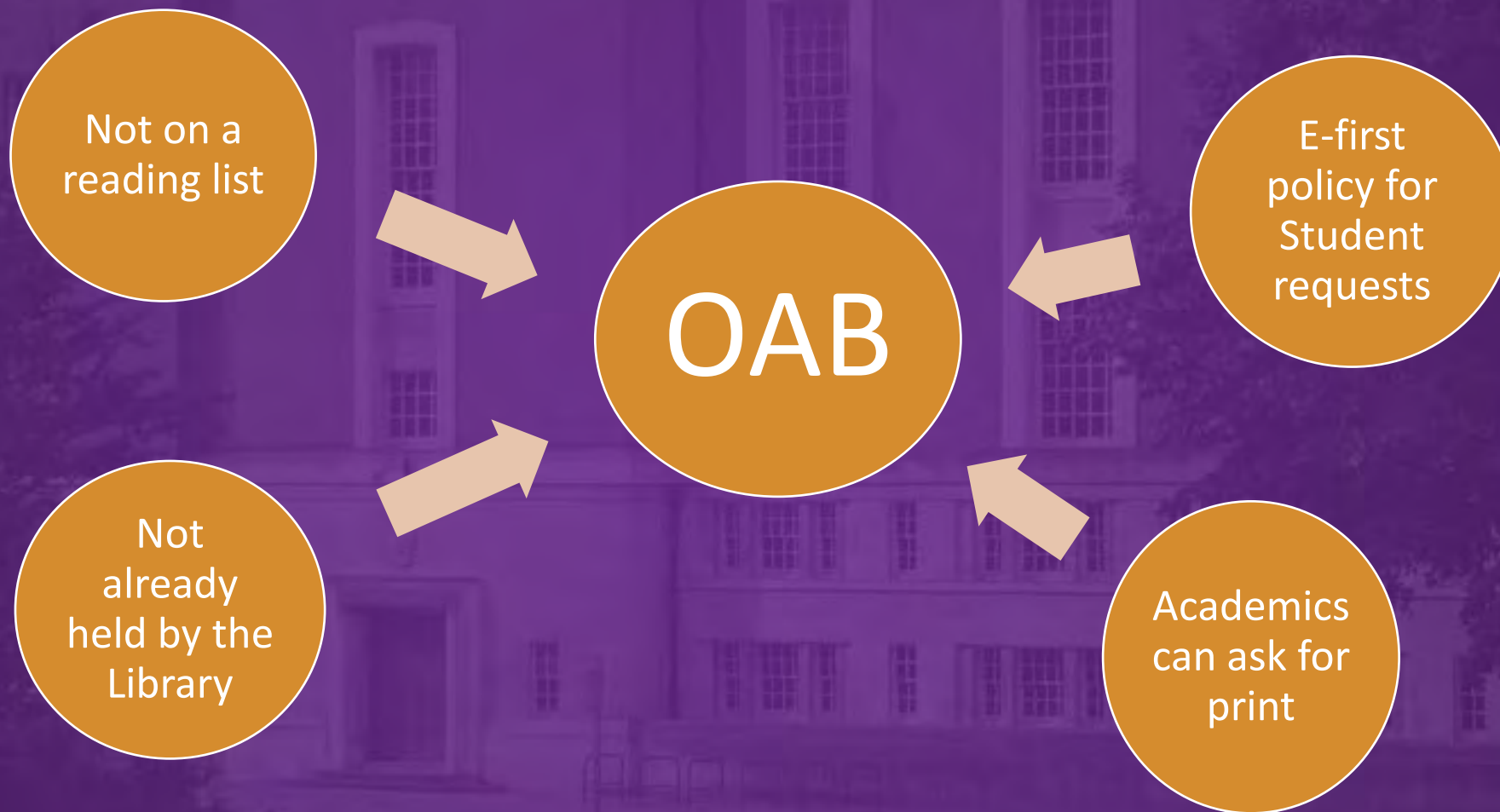
Order a Book and Order an Article forms can be found under 'Using the library' on the Library webpages:



# The Order a Book form

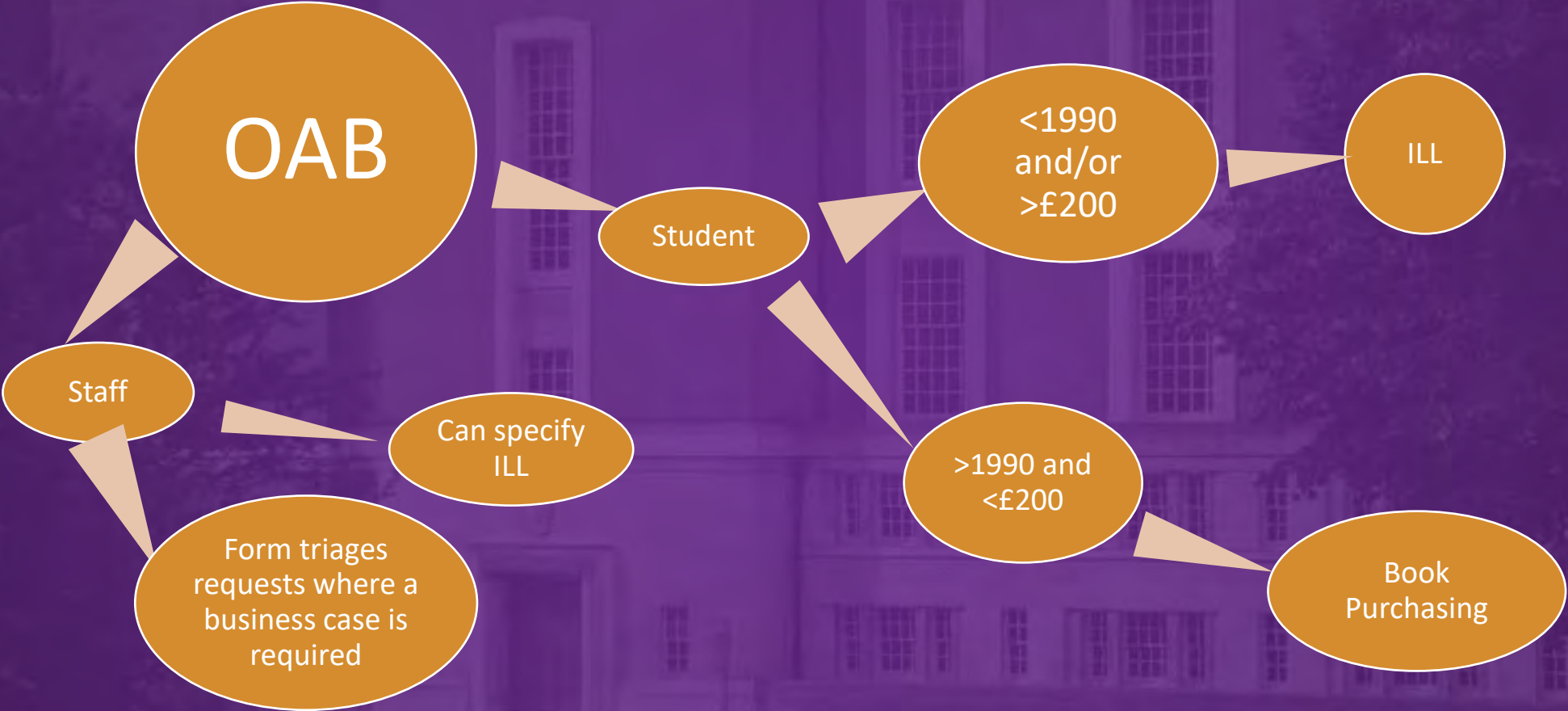


# The Order a Book scheme (OAB)





# The Order a Book form - Triage



# Order an Article



# RapidILL – digital supply of journal articles and book chapters

**Journal Request Notification**

Library Forms <notifications@fc  
To ● UML DSU-erequests Mon 15:58

Requester organisational unit: School of Arts, Languages and Cultures  
Requester division: School of Arts, Languages and Cultures  
Study discipline:

Bibliographic details:

ISSN: 0888-188X  
Author: Myron Taube  
Article Title: Moll Flanders and Fanny Hill: A Comparison  
Journal / Conference / Report title: Ball State University Forum  
Volume: 9  
Part / Issue number: 2  
Start page: 76  
End page: 80  
Year: 1968  
Reference:  
Additional information:

**1** **Odyssey**  
**Rapid #: -18759837** [odyssey.rapid.exlibrisgroup.com/ILL](https://odyssey.rapid.exlibrisgroup.com/ILL)

**ACTIONS**  
[Resend]  
[Move on]

Status	Rapid Code	Branch Name	Start Date
New	EUM	Main Library	03/07/2022 03:58 PM
Pending	CFS	Henry Madden Library	03/07/2022 04:07 PM
Batch Printed	CFS	Henry Madden Library	03/07/2022 04:10 PM
Filled (rolled back)	CFS	Henry Madden Library	03/07/2022 07:33 PM
Received via RapidX	CFS	Henry Madden Library	03/07/2022 07:40 PM
Sending via RapidX	CFS	Henry Madden Library	03/07/2022 07:40 PM
Filled via RapidX	CFS	Henry Madden Library	03/07/2022 07:41 PM

**CALL #:** LH1.B18 F6  
**LOCATION:** CFS :: Henry Madden Library :: CSUFRESNO1 p  
**RAPIDX DOCUMENT:** [View Document](#)  
**REQUEST TYPE:** Article CC:CCL  
**JOURNAL TITLE:** Forum  
**USER JOURNAL TITLE:** Ball State University Forum  
**CFS CATALOG TITLE:** Forum  
**ARTICLE TITLE:** Moll Flanders and Fanny Hill: A Comparison  
**ARTICLE AUTHOR:** Myron Taube  
**VOLUME:** 9  
**ISSUE:** 2  
**MONTH:**  
**YEAR:** 1968  
**PAGES:** 76-80  
**ISSN:** 0888-188X  
**OCLC #:** CFS OCLC #: 13511121  
**CROSS REFERENCE** 330748909230001631

# How do we Supply Material

Update on your order request

CU customerservices@manchester-uk.libanswers.com  
To Marta Knight 09:25

**The University of Manchester Library**  
15/03/2022

**Update on your order request**

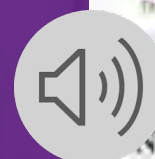
Dear Marta,

Title: Households and financialization in Europe : mapping variegated patterns in semi-peripheries / edited by Marek Mikuš and Petra Rodik., Abingdon, Oxon ; New York, NY ; Routledge, 2021, 9781003028857, ISBN

The resource you requested has now been received and is available in Library Search via the following link: [Click Here](#)

Sincerely  
Book Purchasing Team

**Main Library**



ILL request from University of Manchester Library

**MANCHESTER 1824**  
The University of Manchester

**The University of Manchester Library**  
15/03/2022

**Notification Item Letter**

Request reference: UKG496

Your Inter Library Loan request for a digital version of the following document has been completed:

Title: Pride and prejudice ... a facsimile / edited by

Please download the PDF document at the following link:

- [Click here](#) and sign in with your University of Manchester username and password.

This document is off-line available for download for 1 month and may be viewed a maximum number of 5 times.

Sincerely  
Inter Library Loans Department

If you have any queries please contact us at [ask.library@manchester.ac.uk](#)

**University of Manchester**



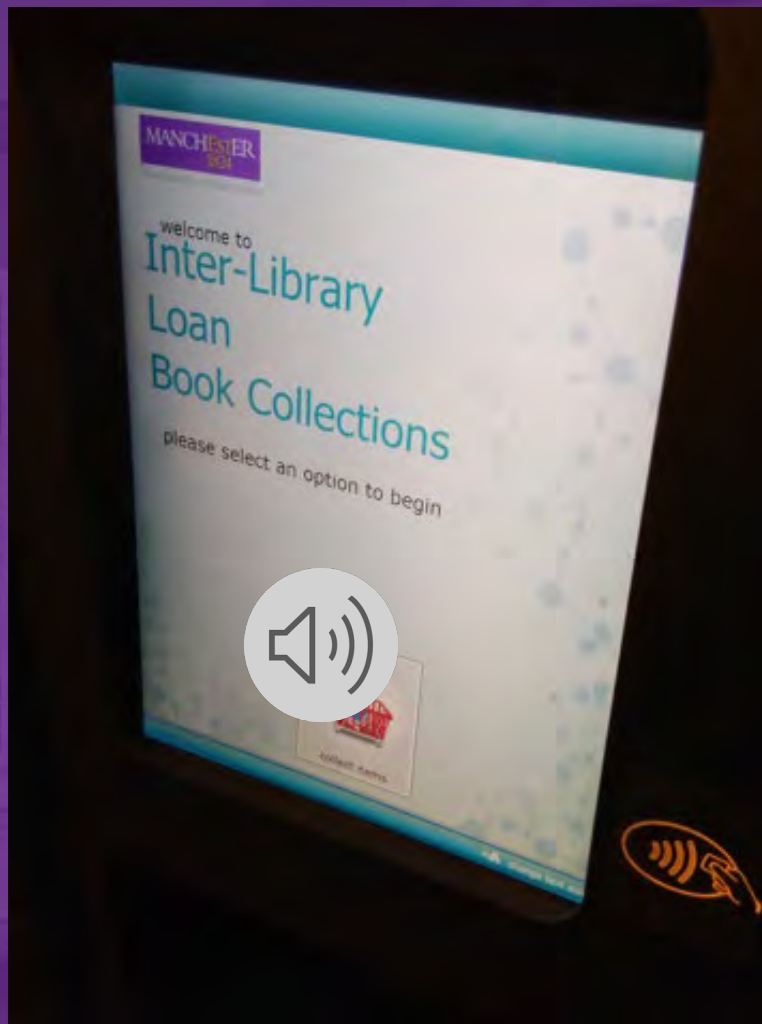
# Shelf-ready material






MANCHESTER  
1824

The University of Manchester



Physical material borrowed from other libraries  
for collection from ILL Smartlockers

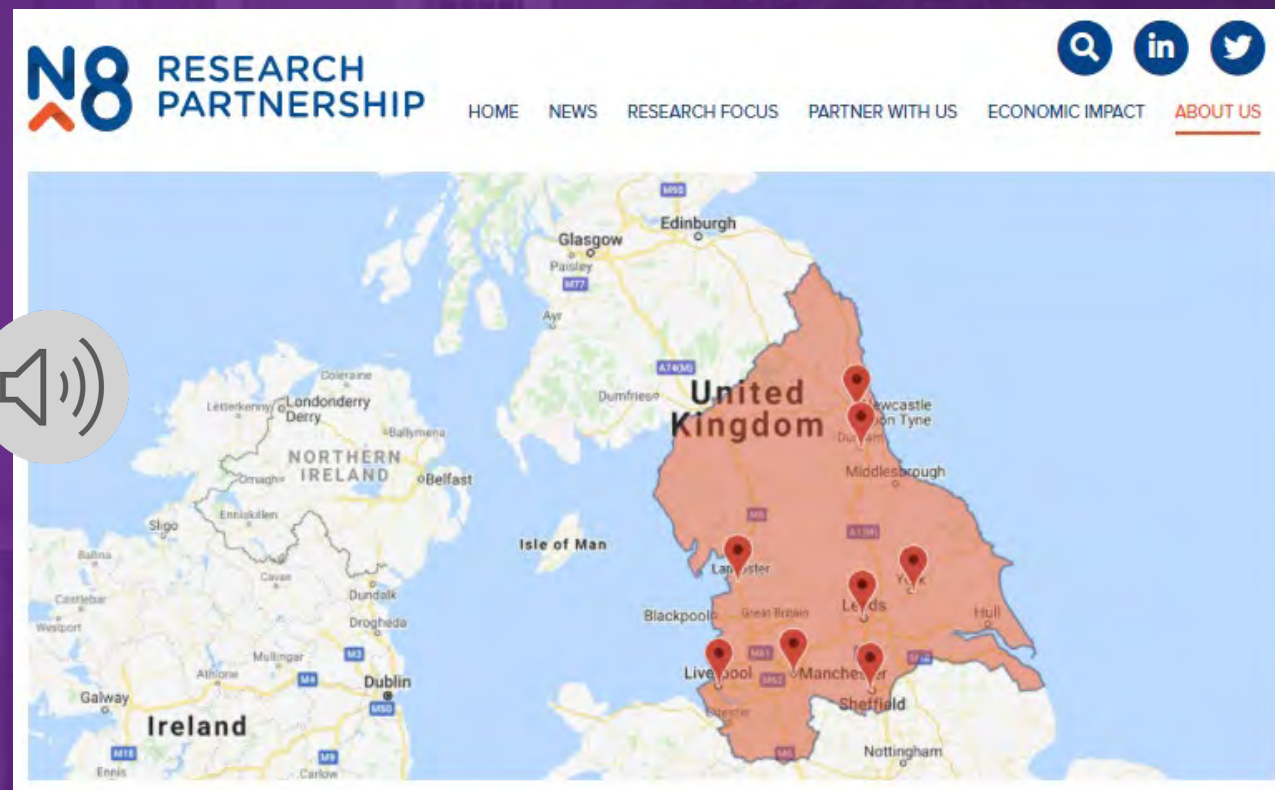
# Supporting our customers

- Seamless access to e-books
- Resolving issues as quickly as possible
- EBA schemes
- e-Book help pages and LibAnswers 
- Auditing e-book accessibility
- Monitoring requests for physical material
- Supplying material to other libraries

# Highlights from 2021

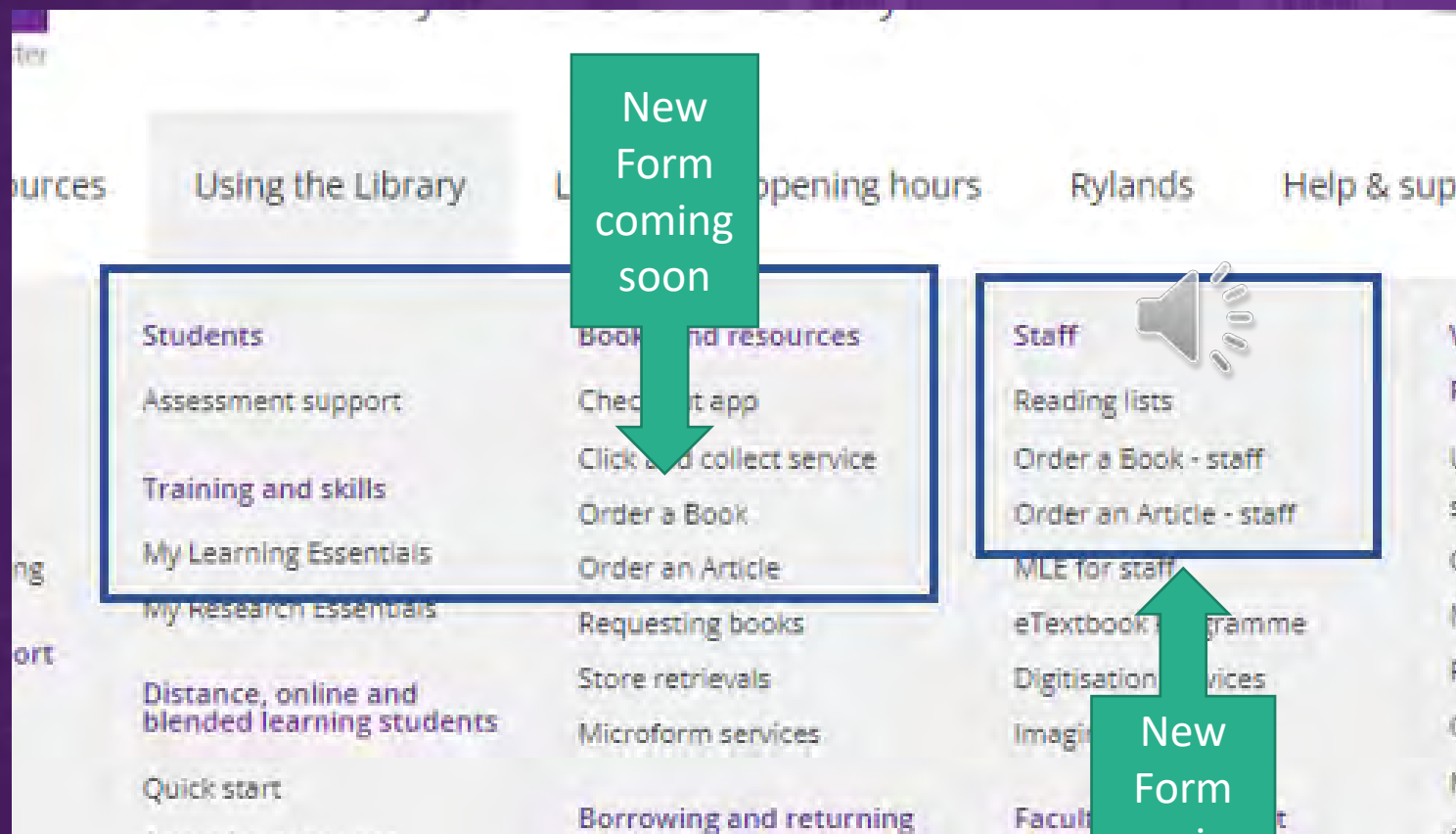
**REF 2021** Research  
Excellence  
Framework

PURE





# What's next?



# Where to find us

## Blue 1.1: Agile working

Please keep in touch:

[uml.acquisitions@manchester.ac.uk](mailto:uml.acquisitions@manchester.ac.uk)

[uml.mdock@manchester.ac.uk](mailto:uml.mdock@manchester.ac.uk)



ANY QUESTIONS?

