

Manchester Access Programme Student Charter

The MAP Student Charter is an important part of how we establish and maintain clear mutual expectations for the experience of all students on the Manchester Access Programme (MAP). It is a two-way commitment and sets out what the MAP team expects from you during your time on MAP and what you can expect from the MAP team at The University of Manchester.

1. Respecting and valuing each other

Together we will:	
<ul style="list-style-type: none"> • Recognise and value positive contributions from others. • Respect each other and treat each other fairly at all times, free from discrimination and harassment. 	
As a student on MAP I will:	As the MAP team at The University of Manchester we will:
<ul style="list-style-type: none"> • Strive to behave in a responsible manner as I realise that my behaviour impacts on the reputation of the programme. • Respect any guidelines given by the University relating to behaviour and conduct when taking part in MAP activities. • Behave and speak in a way that does not offend others e.g. bullying, using abusive language or gestures, sexist or racist behaviour, or any other harassment. • Be on time for all meetings and events (and agree in advance late arrival/early departure). • Be polite and respectful during MAP sessions by paying attention to the session leader. • Adhere to the Student Code of Conduct. 	<ul style="list-style-type: none"> • Ensure a safe and accessible environment for you, both online and on-campus. • Provide support to facilitate success on the programme. • Adhere to the Staff Code of Conduct.

2. Communicating and interacting with each other and with the University

Together we will:	
<ul style="list-style-type: none"> Communicate with openness, respect and honesty to create an open, safe and transparent environment for discussion. 	
As a student on MAP I will:	As the MAP team at The University of Manchester we will:
<ul style="list-style-type: none"> Inform the MAP team of any changes to my contact details or personal information. Communicate with the MAP team, my Academic Tutor and University staff in a professional and polite manner, whether in person, online or via email. Read the MAP newsletter on a regular basis, and respond in a timely manner to any MAP team communications. Check my emails and junk folder on a regular basis. Give feedback to the MAP team to help evaluate and improve the programme for both myself and future MAP students. Inform the MAP team (or my Academic Tutor where appropriate), when I am unable to attend a MAP session for a genuine reason. Adhere to the communications expectations set out in the pre-learning activities. 	<ul style="list-style-type: none"> Provide clear guidelines on what you will need to do to pass each of the compulsory modules of MAP. Provide you with information to help you plan your future studies. Provide you with full, accurate and accessible information about the University, its facilities and programmes. Demonstrate high professional standards when interacting with you. Listen to you and respond to any concerns in a timely manner. Use appropriate technology to teach, support and communicate with you, where available and when it enhances your MAP experience.

3. Our Learning experience and participation

Together we will:	
<ul style="list-style-type: none"> Mutually commit to hard work and a desire to achieve our best. 	
As a student on MAP I will:	As the MAP team at The University of Manchester we will:
<ul style="list-style-type: none"> Pass all compulsory modules of the Programme in order to receive the MAP benefits. The compulsory modules are: <ul style="list-style-type: none"> * Launch, Research and Referencing Skills, Academic Assignment, and University Life Conference; As required, complete all compulsory module tasks. Meet all deadlines for the Academic Assignment as set by MAP and my Academic Tutor. Make sure all work produced for projects or the assignment is my own. Where information is used from another source this will be referenced appropriately. Know that I am encouraged to declare any issues that will affect my participation on the Programme (such as illness or disability), so that I can be supported correctly. 	<ul style="list-style-type: none"> Support you during your time on the Programme through providing relevant and up to date information, advice and guidance. Provide a clear timetable of activities. Keep our modules up to date and use knowledge from around the University to inform their content.

4. Personal and academic development

Together we will:	
<ul style="list-style-type: none"> Actively engage with the Programme and learning opportunities. 	
As a student on MAP I will:	As the MAP team at The University of Manchester we will:
<ul style="list-style-type: none"> Make full use of the opportunities provided by the MAP team and the University. Perform to the best of my ability and fully engage with each task, to successfully complete each of the compulsory modules. Meet all deadlines set by the MAP team. Be pro-active and seek help or clarification if needed, taking advantage of opportunities to gather, reflect on and respond to feedback on my work. Engage as an independent learner and take responsibility for achieving my potential as a student on the Programme. 	<ul style="list-style-type: none"> Take into account the 2 A-Level grades or equivalent reduced offer for an undergraduate course at The University of Manchester providing you successfully complete the Manchester Access Programme e.g. if you successfully complete MAP an entry requirement of AAB could become BBB. Provide guidance on the degree course that best suits your ability, experience and qualifications. Application to a degree course will take account of: <ul style="list-style-type: none"> *Academic performance from school/college (prior and predicted achievement); *Your ability to meet other necessary requirements and skills asked by the course; *Successful completion of The Manchester Access Programme. Provide an email of support should you wish to apply to other universities. Ensure you have access to a range of optional opportunities.

5. MAP Strands

Please note:

- You will not be able to change MAP subject strands (e.g. you cannot change from the Dentistry Strand to the Medicine Strand or from the General Strand to the Medicine Strand).

Differential offers

- Successful applicants who complete the General Strand will be eligible for a differential offer of 2 A Level grades or equivalent towards entry for **any course** at The University of Manchester **apart from Medicine or Dentistry**.
- Successful applicants who complete the Medicine Strand will be eligible for a differential offer of 2 A Level grades or equivalent towards entry for **any course** at The University of Manchester **apart from Dentistry**.
- Successful applicants who complete the Dentistry Strand will be eligible for a differential offer of 2 A Level grades or equivalent towards entry for **any course** at The University of Manchester **apart from Medicine**.

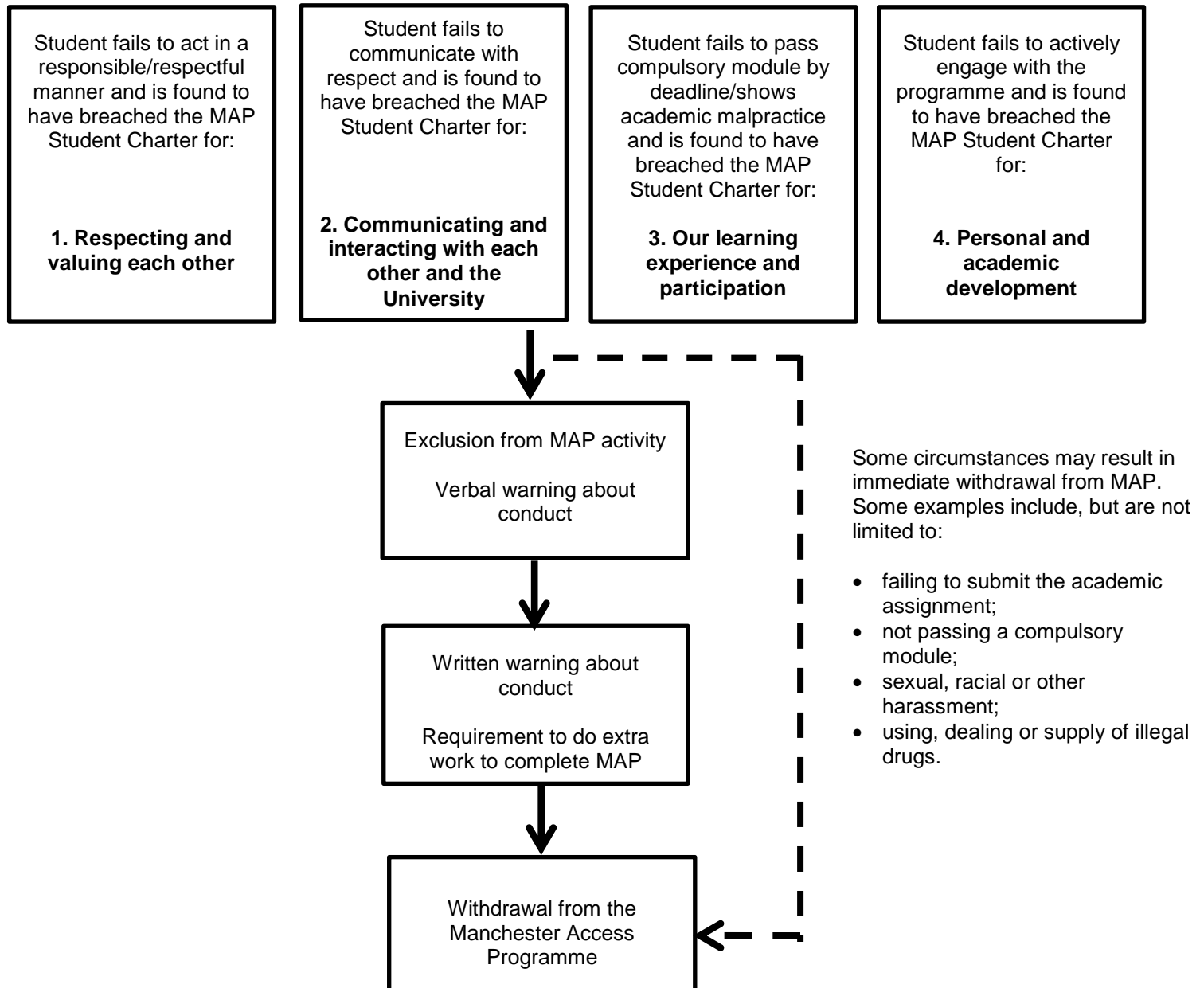
Strand ↓	Medicine lower offer	Dentistry lower offer	Lower offer for all other courses
General	No	No	Yes
Medicine	Yes	No	Yes
Dentistry	No	Yes	Yes

- If you complete the General Strand of MAP but later decide to apply for Medicine or Dentistry at Manchester, you can still do this but you would **not** qualify for the differential offer of 2 A-Level grades or equivalent towards entry for one of these courses.
- Foundation courses:** Any student, regardless of strand, can apply for a foundation course, but as foundation courses have very limited places and give special consideration to applicants there is no guarantee of a lower offer for a foundation course.
- How the reduced offer is applied will be at the discretion of the admissions tutor for the course you have applied to. For example certain subjects may have subject-specific requirements. You must check these via our [course finder](#) before applying.
- Contextual offers:** The MAP differential offer may also be combined with a contextual offer, resulting in a further reduction to a minimum of BBC. Further details can be found in our [Contextual Offer alongside Access Programmes](#) summary. You can find out more about contextual admissions and check your eligibility via www.manchester.ac.uk/study/undergraduate/contextual-admissions/admissions/

Manchester Access Programme Student Disciplinary Process

The MAP team and The University of Manchester expect MAP students to conduct themselves in a reasonable and proper manner at all times. These values are essential to the functioning of MAP and the MAP team will take appropriate action where a proven breach relating to student conduct has occurred.

Failure to do so may result in a warning about conduct or withdrawal from the MAP programme as outlined below:



Manchester Access Programme

Student Charter Agreement

By agreeing to this document you are agreeing to all of the terms and conditions set out in the Manchester Access Programme Student Charter:

1. Respecting and valuing each other
2. Communicating and interacting with each other and with the University
3. Our learning experience and participation
4. Personal and academic development

Signed: 

Date: February 2022

Dr Mandy Crow, Student Recruitment and Widening Participation Manager