



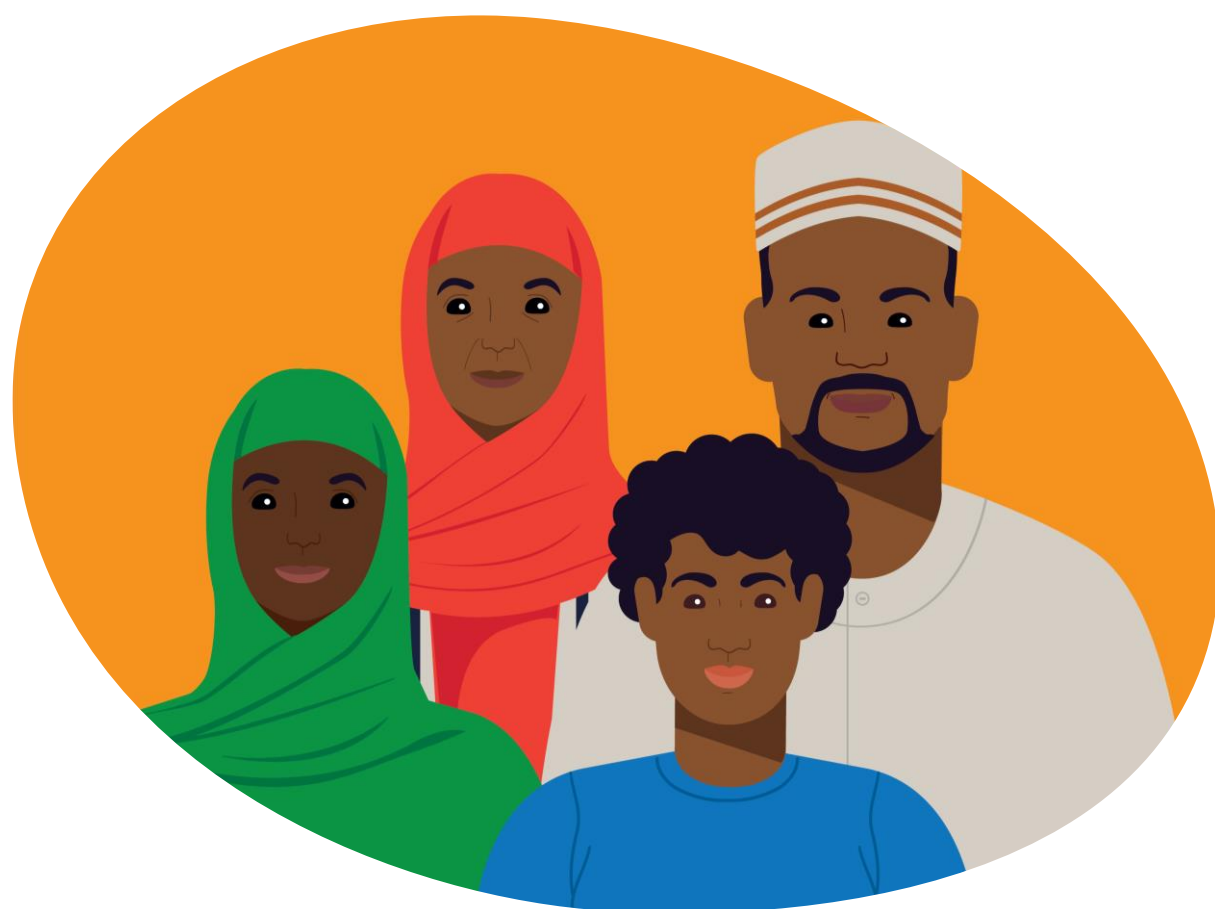
CaFi Culturally-adapted Family Intervention

African & Caribbean people with psychoses

Have you been diagnosed with schizophrenia and/or psychosis?

Are you a **service user** of Sub-Saharan African, Caribbean, Black British, or Mixed heritage?

We are looking for **volunteers** to help us test our new “**talking therapy**” called CaFi (Culturally-adapted Family Intervention) for a research study!



To find out more about our work, please contact a research staff member:

Trial Manager: Lauren Manderson, lauren.manderson@gmmh.nhs.uk