

## Audio-Visual System User Guide: Teaching Clusters

### Space Overview:

This teaching space has four available microphones, two handheld and two lapel. These will be housed in a charging dock in each cluster where they should be returned after use.



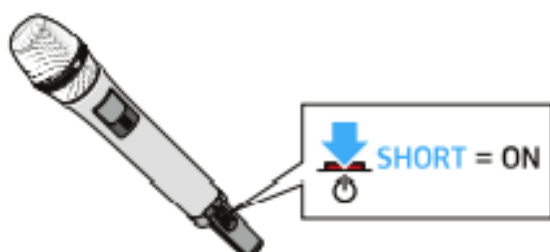
Charging dock

### Switching the handheld transmitter on and off

**i** After switch-on, the receivers and transmitters will take approx. 10 seconds to establish the radio links.

To switch the handheld transmitter on:

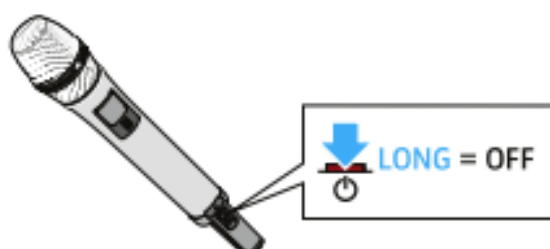
- ▶ Short-press the **ON/OFF** button in the direction of the transmitter body.



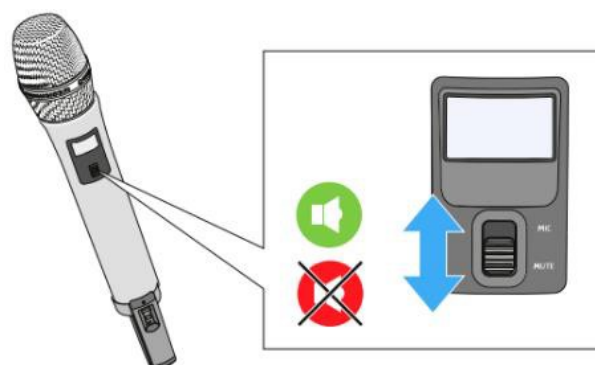
The home screen appears on the display panel (see „Displays on the display panel of the SL Handheld DW“). The status LED indicates the current status of the receiver (see „Meaning of the status LED on the handheld transmitter“). The radio link to the last paired receiver is established automatically as soon as the receiver is switched on.

To switch the handheld transmitter off:

- ▶ Press the **ON/OFF** button for approx. 3 seconds in the direction of the transmitter body.



Muting the handheld transmitter:

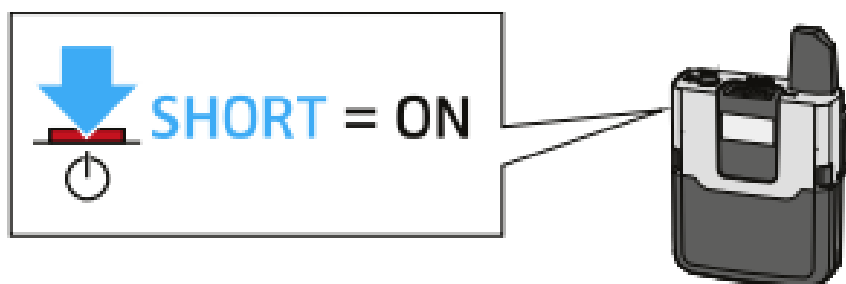


### Switching the bodypack transmitter on and off

**i** After switch-on, the receivers and transmitters will take approx. 10 seconds to establish the radio links.

To switch the handheld transmitter on:

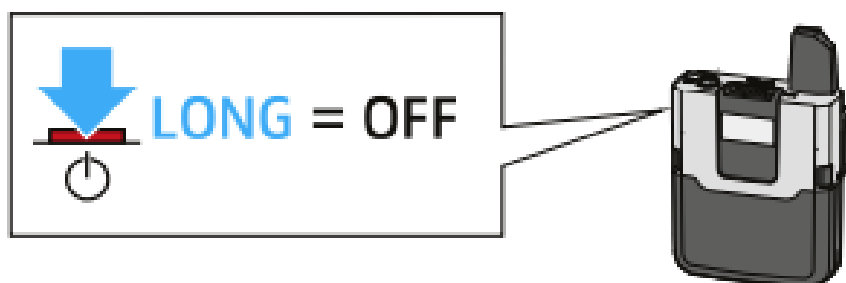
- Short-press the **ON/OFF** button.



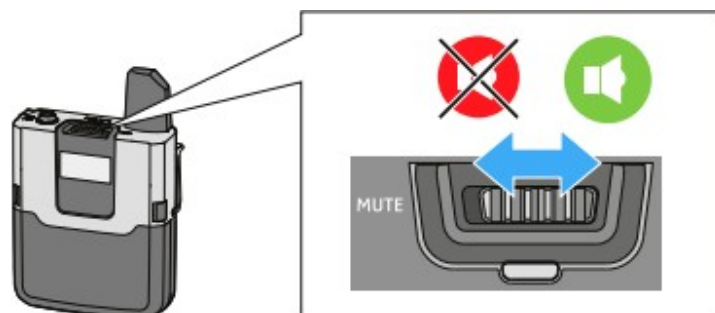
The home screen appears on the display panel (see „Displays on the display panel of the SL Bodypack DW“). The status LED indicates the current status of the receiver (see „Meaning of the status LED on the bodypack transmitter“). The radio link to the last paired receiver is established automatically as soon as the receiver is switched on.

To switch the handheld transmitter off:

- Press the **ON/OFF** button for approx. 3 seconds.



Muting the lapel transmitter:



### **Reporting faults and getting support:**

Should you experience a fault with this system, please report to the Media Services Helpdesk via internal extension 52521 or by contacting [mediaservices@manchester.ac.uk](mailto:mediaservices@manchester.ac.uk)