

Audio-Visual System User Guide: Engineering Building A, GA.056 Blended Lecture Theatre

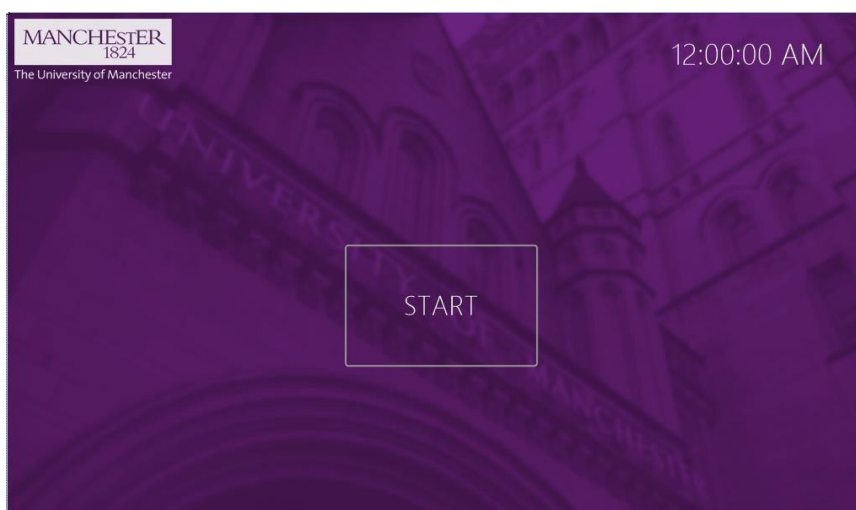
Theatre Overview:

This partitioned theatre has a main, central projector, audio system and control system. It is controlled via a touch panel which is positioned on the central pillar at the front of the space.

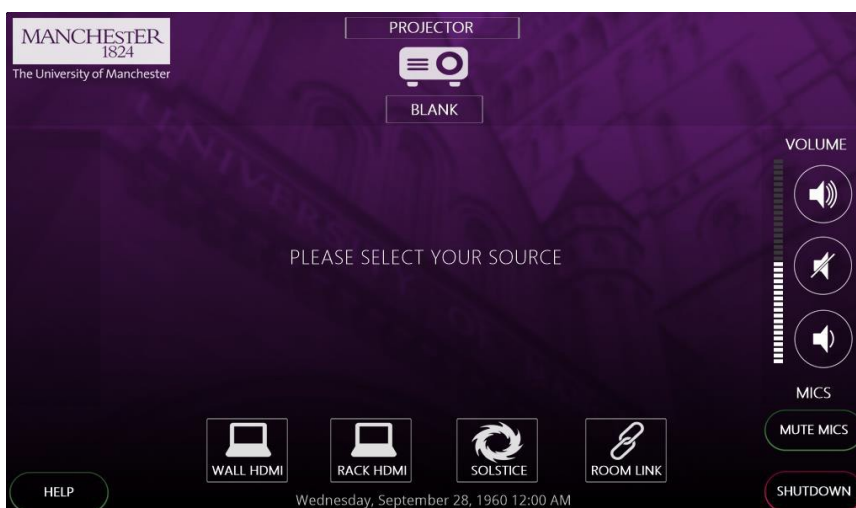
Control Touch-Panel

Positioned on the central pillar is a touch-panel interface which can be used to power the system on and off, select a source to display and control the system volume.

If the panel is blank then it is in standby, touch it once to wake it. When the system is powered down, you will be presented with this initial screen. Press the start button to power the system on.



You will be taken to the main control page. From this page you can select which source you would like to display, control volume and mute the microphones. There are four available sources, WALL HDMI, RACK HDMI, SOLSTICE and ROOM LINK. Pressing any of these will power up the projector displaying the selected source. The currently displayed source can be changed at any time in the same manner. *Note: When you power the projector on, a drop screen will lower from the ceiling above you. It can be heard and moves slowly but be aware.*



Sources:

Wall HDMI

A HDMI input plate is available on the pillar near the control panel. Connect your device with a HDMI cable and select this source to use.

RACK HDMI

This is intended for AV staff to use in live events where signals can be connected from an adjoining space.

Solstice

Mersive Solstice wireless collaboration and display system. On selecting this source, the screen will display the connection details and security code needed to do this. For more details on how to use the Solstice system visit: www.solstice.manchester.ac.uk

Room Link

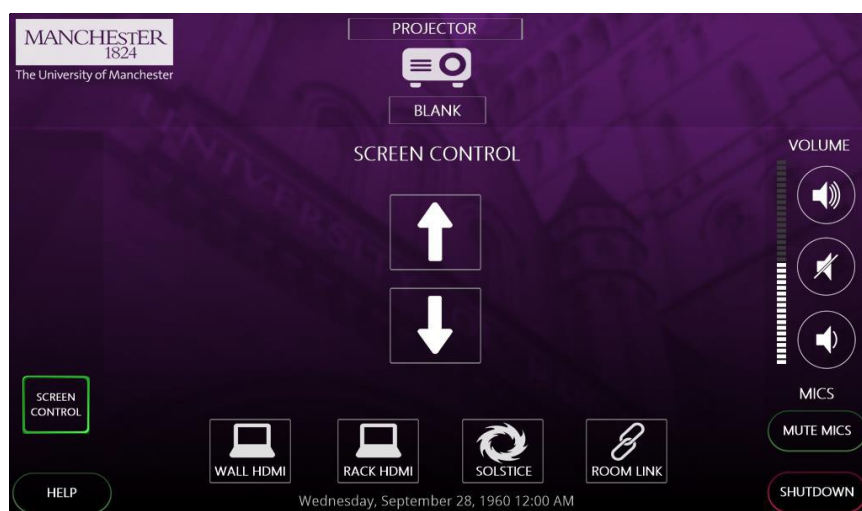
This system has the ability to display content from other teaching space for use in overflows and linking spaces together. This cannot be configured by the user however and must be requested from Media Services.

Volume Control:

To control the volume of your selected source, use the volume up, down and mute buttons to the right-hand side of the touch-panel. The microphones within the space can also be muted by pressing the MUTE MICS button.

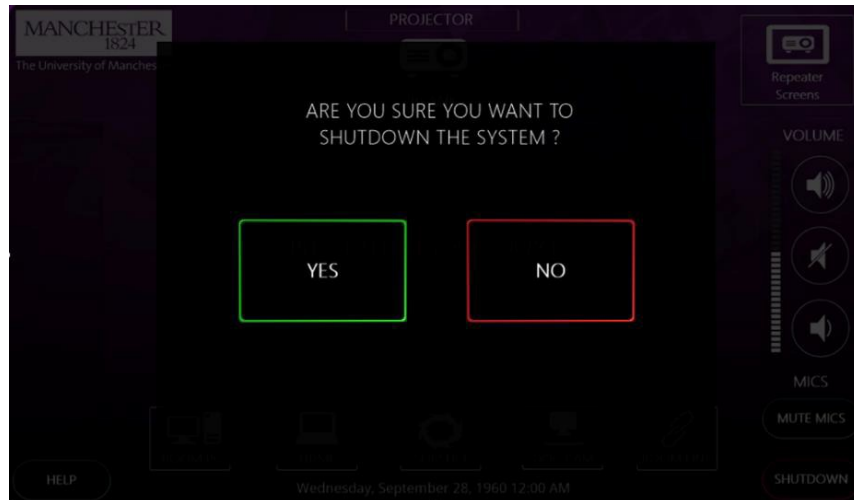
Projection Screen Control:

Selecting the SCREEN CONTROL button towards the bottom left of the user interface will display the following pop-up which allows the user to raise or lower the screen during a session. The projector should be blanked by selecting the BLANK button under the projector icon when doing this. When the system is fully turned on or off the screen will automatically lower and raise accordingly.



System Shutdown:

Once finished using the system, please remember to shut it down to conserve power usage and prolong the life of the AV equipment. To shut the system down, press the SHUTDOWN button at the bottom right corner of the touch-panel. You will then be presented with the following screen. Pressing the green YES button will power the system down and return it to the start screen. If you pressed SHUTDOWN in error and wish to continue working with the system, press the red NO button.



Voice Reinforcement:

The theatre includes two portable microphones, one lapel and one handheld. The microphones can be muted via the control system button if desired.

Instructions for operating the microphones are available on the following pages:

Portable Microphones:



Switching the handheld transmitter on and off

i After switch-on, the receivers and transmitters will take approx. 10 seconds to establish the radio links.

To switch the handheld transmitter on:

- ▶ Short-press the **ON/OFF** button in the direction of the transmitter body.



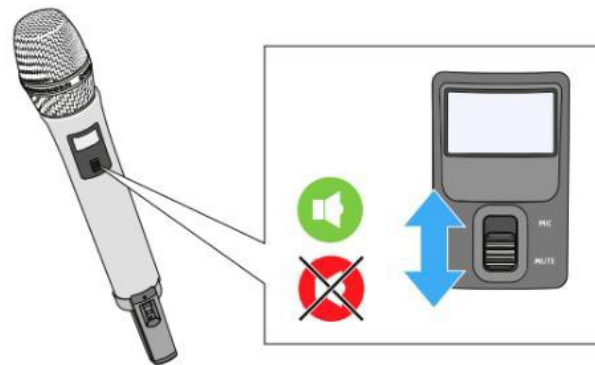
The home screen appears on the display panel (see „Displays on the display panel of the SL Handheld DW“). The status LED indicates the current status of the receiver (see „Meaning of the status LED on the handheld transmitter“). The radio link to the last paired receiver is established automatically as soon as the receiver is switched on.

To switch the handheld transmitter off:

- ▶ Press the **ON/OFF** button for approx. 3 seconds in the direction of the transmitter body.



Muting the handheld transmitter:

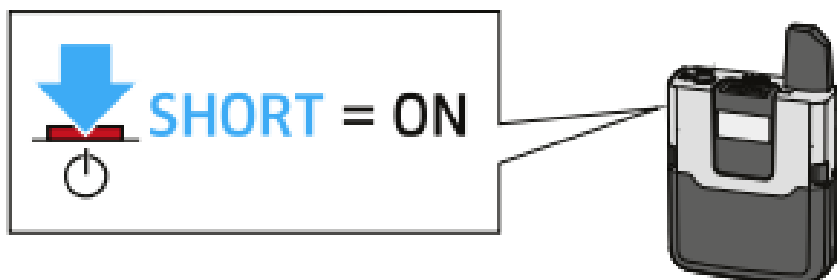


Switching the bodypack transmitter on and off

i After switch-on, the receivers and transmitters will take approx. 10 seconds to establish the radio links.

To switch the handheld transmitter on:

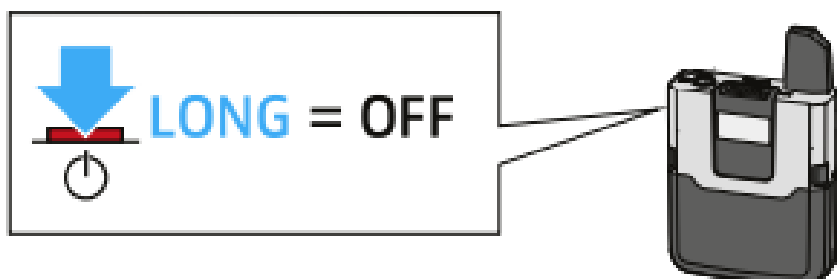
- Short-press the **ON/OFF** button.



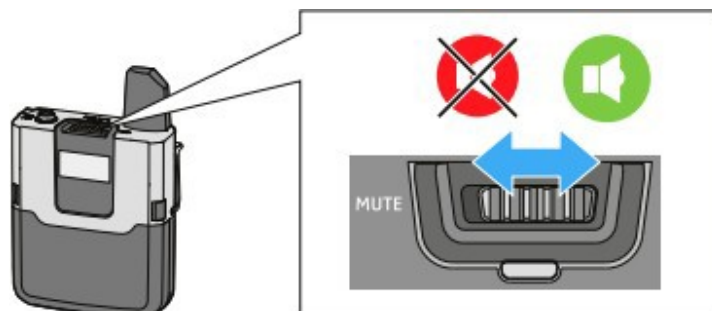
The home screen appears on the display panel (see „Displays on the display panel of the SL Bodypack DW“). The status LED indicates the current status of the receiver (see „Meaning of the status LED on the bodypack transmitter“). The radio link to the last paired receiver is established automatically as soon as the receiver is switched on.

To switch the handheld transmitter off:

- Press the **ON/OFF** button for approx. 3 seconds.



Muting the lapel transmitter:



Reporting faults and getting support:

Should you experience a fault with this system, please report to the Media Services Helpdesk via internal extension 52521 or by contacting mediaservices@manchester.ac.uk